

# Sun 14<sup>th</sup> August Exeter Show

## Exeter Racecourse EX6 7XS

### BBR 'On the Road' Entirely Unreserved Auction

Commission 15% on hammer, immediate payment taken, we bring items to you.



**E1. BLACK GLASS PLYMOUTH BEER** (well dark green!). 9.5ins tall, heavily embossed 'Imperial Pint' round shoulders. To front 'JR Wilson' pictorial man t.m. (9/10) £12.98

BBR is dispersing several collections - lots carry provenance initials:  
**NL = Norman Lewis**  
**KB = Kevin Boyle**  
**CM = Chris Mortimer**  
**GM = Garth Morrison**  
**MH = Michael Harris**  
**AB = Alan Blakeman**

**E5. DEVONPORT TEAPOT.** 5ins tall, multicoloured image to front of seafront view. Victoria Austin transferred to base. Couple lip flakes otherwise exc. (9/10) (GM) £2.36



**E2. BARNSTABLE & BIDEFORD** std, g.b., all tan. 'C.C. Dornet & Co' pictorial tree t.m. Rear in-manufacture 'blow' mark. Price Bristol p.m. **Plus** all with variant (2) (9/10) £11.80



**E6. REDRUTH BREWERY CO** std, all tan, g.b. Large pict. t.m. of bird carrying a basket with figure in it feeding a hungry moon! Price Bristol p.m. Exc/ A1 (10/10) £9.44

**E3. THE BLUE BOY** multicoloured pot lid. 4.7ins diam. Excellent colours & strike. Exc/ A1 condition. (10/10) £23.60



**E7. DEMIJOHN**, 13.75ins, mid green glass. Raised area to shoulder with a '5'. Crude base, pontilled. Some internal rear residue - should easily clean. (9/10) £3.54



**E4. WHITMARSH/ PLYMOUTH** 6oz aqua codd with white looking marble? Heavily embossed with key pict. t.m. to front 'Wm Barnard/ ...London' makers. Exc/ A1 (10/10) (GM) £17.70



**E8. POLLEY'S/ HOME BREWED GINGER BEER**, std, all white. Strong black transfer within 2 concentric circular borders 'Established/ 1860' to centre. Price Bristol p.m. Exc/ A1 (10/10) £5.90

Tried • Tested • Trusted  
[www.onlinebbr.com](http://www.onlinebbr.com)  
more sales...  
more often





**E9. T Denniford/ & Son/ Ltd/ Plymouth.** Clear glass acid etched soda siphon listing various places (3 in Australia?) where prize medals were awarded. Good. (9/10) (GM) £23.60

**E10. BLUE INKS TRIO.**

Tallest circular 2.8ins, large size boat (mid blue), standard boat (dark blue) - couple of lip flakes. (3) (8/10) (MH) £14.16



**E13. PAIR PLYMOUTH t.t., std, g.b's.** 1. 'Brachers/ Brewed/ Ginger Beer.' (2 base flakes) 2. Scranton House with a buckled belt. Price Bristol p.m. £20.06



**E14. GLOBE 10oz golden amber codd.** Very heavily embossed with familiar sunburst above 4 lines for maker (Redarken Bros...), to other side 'Groves & Whitnell' & 'Salford' vertically. Exc/ A1 - as good as they get (10/10) (AB) £9.44



**E15. EYEBATHS GROUP.** A mixed variety including glass, ceramic & rubber, freeborn & mounded. Various colours. 98) (9/10) (NL) £76.70



**E11. GLEN GARRY OLD HIGHLAND WHISKY**

stoneware handled jug, top tan, lower off white. Detailed black transfer depicting a corkscrew. 'John Hopkins/ London and Glasgow'. Port Dundas p.m. (9/10) £23.60



**E16. TRURO TEAL BLUE CODD** 6oz capacity, 4 large lugs to neck, marble in base. Boldly embossed 'WHO MALLET & CO/ TRURO'. Thin lip flake. Fantastic colour. (9/10) (GM) £43.66

**E12. HARDINGS DAIRY stoneware cream pot.** 3ins tall, t.t. Black transfer 'RICH CREAM/ BITTERNE PARK CREAMERY'. Very good. (9/10) £29.50



**ABSENTEE BIDS**

Should reach BBR no later than Thursday email/ tel to double check: [sales@onlinebbr.com](mailto:sales@onlinebbr.com)

**LATE ENTRIES TAKEN ON THE DAY  
catch AB EARLY - SAME DAY PAY OUT**



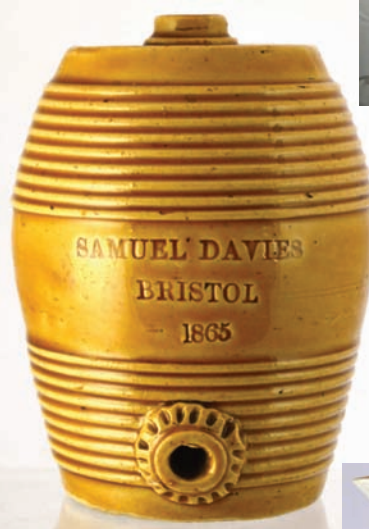


**E17. TORQUAY MINERAL WATER COMPANY g.b. duo.** One std all white, other ch. t.t. Both featuring the initials within carved banner & 'Health' within. (2) (9/10) £41.30

**E18. Pair of acid etched soda syphons 'COLLIERS/ STORES/ PLYMOUTH'** with coat of arms & 3 plumed logo. 2. Plymouth/ Breweries, nibbed type, with asymmetric design. (2) (7/10) (GM) £17.70



**E19. BRISTOL MINIATURE BARREL.** All tan, .ins tall, shiny glazed barrel, raised rings to top & lower, top & bottom spigot. Impede 'Samuel Davies/ Bristol/ 1865'. Exc. (9/10) £82.60



**E20. NEWTON ABBOTT CO-OPERATIVE SOCIETY/ EDUCATIONAL COMMITTEE milk (?) jug.** 6ins tall, white body, orangey-red transfer with buckled belt surround. 'Palissy' to base. Exc (9/10) (GM) £10.62



**CONDITION** Before bidding please ensure items meet your condition requirements - **INSPECT!** On sale day **ALL** items sold - **AS SEEN, NO RETURNS**



**E21. 'SK SKINNER/ EXETER', 10oz aqua narrow necked codd.** Entwined initials to centre. To rear 'Codd's Patent/ 4/ Makers/ rylands & Codd/ barnsley.' Very good. (9/10) £35.40



**E22. BOWER HINTON SUNDAY SCHOOL ceramic beaker.** All white glaze, 4.5ins tall, strong black transfer depicts buildings & records 'Centenary 1831-1931'. East of Taunton now Martock. Minor hairline to L rear. (8/10) (JR) £2.36

**E23. PAIR PLYMOUTH g.b's, std, t.t.** 1. W H Harris & Son/ Brewed/ Ginger Beer' - entwined initials t.m. 2. WG Erricker/ Home Brewed Ginger Beer' - horseshoe t.m. (2) (7/10) £11.80



**E24. PONTILLED decanter?** 6ins tall, aqua glass (full of seed bubbles), flared lip, base pontil. Quality engraved pictorial ship to one side, scroll decoration to other. (9/10) £5.90







**E25. DOULTON LAMBETH STONEWARE DISH.**  
2.3ins tall, multicoloured glazes - blue, dark & light green, brown etc. Various base marks, 'GS' signature etc. Very good - nay - fantastic. (10/10) (AB) £59.00

## FULL RESULTS

will be posted on  
BBR's website & FB  
page - Mon or Tues  
after, also on all  
forums, or simply  
email AB for the pdf:  
sales@onlinebbr.com



**E29. DEVONPORT g.b. trio** - all c.c., t.t. Three variants for the 'Devonport/ Mineral Water Co.' Price Bristol p.m. Good. (3) (9/10) (GM) £31.86



**E26. DEVONPORT cast iron plaque.** 7ins wide, rectangular with curved top. Two raised lines of lettering 'RW STEPHENS/ DEVONPORT'. Two fixing holes. Some corrosion but perfectly sound. (7/10) (GM) £11.80

**E30. JOHN HARE'S/ STONE GROUND/ SELF-RASING/ FLOUR/ HENLOW/ BED.'**  
Off white cotton sacks with 6 lines of red lettering. (20) (8/10) (NL) £9.44



**E31. 'THE KNOCK/ FURNITURE/ CREAM' blue transferred narrow neck pot.** 4.5ins tall, 6 lines of writing surrounded by decorative outer border. Buchan p.m. Rear lip flake. (8/10) (AB) £11.80



**E28. 'POISON/ NOT TO BE TAKEN' aqua bottle,** 10.5ins tall, Curved rectangular shape, embossed to narrow sides & ribs, wire bail type closure. Base embossed. Unusual. (9/10) (GM) £11.18



**E27. PRICES/ CELEBRATED/ COLD CREAM.** Portmerion style cylinder, 6.2ins tall. Off white body glaze with large black transfer to front set on a mid brown background. (8/10) (GM) £3.54



**E32. REDRUTH small, 7ins, aqua hamilton.** Embossed 'Stolen From/ West of England/ Redruth Brewery/ Company/ Aerated Waters'. Plumed t.m. above a shield design. Good. (8/10) (GM) £35.40



## CONDITION REPORTS

Absentee bidders can  
tel: 01226 745156 or email:  
sales@onlinebbr.com





**E33. LAUNCESTON teapot.** 5.3ins tall, castle to one side but more importantly the reverse depicts the named shop 'EDMAN SHUKER GROCER CHEMIST DRUGGIST... MARKET STREET' - fabulous shop front. **Gold** decoration around. Great. (9/10) (GM) £35.40



**E34. TINS TRIO.** Largest 3 x .ins. 1. Princess of Wales/ Landes Speciality. 2. Players/ Country/ Life/ Cigarettes 3. 'Nestor/ Gianacis/ Cigaretten/ Queen' - Very colourful. Various conditions (3) (7-8/10) £8.26



**E35. HOLLOWAY'S/ OINTMENT transferred pot.** Classic Victorian pot covered all round with a **black** transfer & seated Amazonian female & child (t.m.) Some wear (7/10) (AB) £5.90

**E36. MUMBY & Co Ltd/ PORTSMOUTH** amber glass acid etched soda syphon. Oval design with large coat of arms to centre. Couple of dings & lip stress cracks, overall clean. (7/10) (GM) £31.86



**E37. 'BISCOMBE PLYMOUTH SODA WATERS' earthenware ashtray,** 3.25ins diam, overall **creamy brown** glaze, incised lettering, striking 'dome' roughened. Very good. (9/10) (GM) £112.10



**E38. 'PLYMOUTH/ R W MILLER & CO',** half pint shouldered black glass beer. Heavily embossed to front surrounded by outer border. Base embossed 'P & R B' (Powell Ricketts Bristol) (8/10) (GM) £23.60



**E39. 'LISKEARD COUNTY COUNCIL/ LISKEARD INSTITUTION',** white ceramic urinal with handle. Every Cornish household should have one! (9/10) (GM) £14.16

## FUTURE BBR AUCTION ENTRIES

can be dropped @ the BBR stall at ANY UK Show.  
Please advise if their is any volume so  
we can accommodate for our return trip!

**LATE ENTRIES TAKEN FOR THIS SALE ON SHOW  
DAY - catch AB EARLY SAME DAY PAY OUT**





**E40. ST COLUMB 1822/ FARMERS ARMS giant bargeware teapot, 9.5ins tall. Shiny brown glaze with various coloured cartouches. Extremely early date & rare size. Spout portion in envelope. No lid (8/10) (JR) £31.86**



**E41. J H Ferguson/ Ginger/ Brewed/ Beer/ Plymouth, std, all white, strong & crisp blue transfer. Extremely fine/ exc/ A1 example. (9/10) £5.90**



**E42. BARNSTAPLE clear glass acid etched soda syphon, 'STARKEY KNIGHT & FORD, pictorial trade mark of galloping horse 'Unapproachable'. Very good. (9/10) (GM) £20.06**



**E43. DEVON g.b. trio. all std, all white. 1. Ilfracombe 'North Devon Mineral Water Co' 2. 'E Petter & Son/ Barnstaple, anchor t.m. 3. Philbrick/ Brewer/ Bideford, 2 Price Bristol p.m., 1 Powell Bristol (3) (8/10) (CM) £11.80**

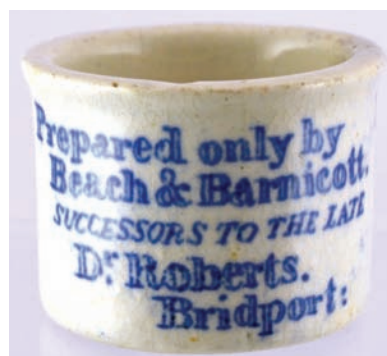


**E44. 'THE PROPERTY OF/ CALMIC Ltd'. All off white glaze on a rectangular body with black transfer to front, internal screw top, 2 air holes. Very good. (GM) £3.54**



**E45. SALTRAM & FALMOUTH bedwarmers. 1. SALTRAM all cream body, transfer both sides. Vulcanite screw stopper. 2. 'FROM/ BEST & COS/ GLASS & CHINA STORES/ FALMOUTH', t.t. Price Bristol p.m. Good (2) GM) £14.16**

**E46. POOR MANS FRIEND ointment pot, blue transfer both sides. (Price 1/1 1/2), to reverse 'Prepared only by/ Beech & Barnicott/ Successors to the late/ Dr Roberts/ Bridport'. Very good. (9/10) (AB) £10.62**



**E47. DARTMOUTH/ P A W CO', 10oz codd with 4 large retaining lugs to neck, marble to base, aqua glass. Overall minnor scuffs & internal haze. An early mineral water (7/10) (GM) £17.70**



## BBR Auctions

Tried • Tested • Trusted  
[www.onlinebbr.com](http://www.onlinebbr.com)  
 more sales...  
 more often





**E48. CRUISKEEN LAWN/ MITCHELL'S/ OLD/ IRISH WHISKY/ BELFAST'** ornately transferred stoneware crock, rear handle, t.t. 3 lines of cautionary transfer 'Murray & Co/ Glasgow' p.m. Very good. (9/10) £29.50

**E52. J KERSWELL/ ROYAL/ ST THOMAS/ EXETER upright aqua mineral,** 9ins tall, large tree t.m. Partial label to rear. 'KILNER BROS MAKERS CONISBORO'. Unusual bobbin shaped stopper with rubber washer. A really great, & rare, patent, made all the better with original label. (9/10) £236.00



**E53. MINIFIES/ WESTON SUPERMILK/ CREAM AND CREAM CHEESE/ FACTORY.** Ornately transferred all white cylinder, 4.75ins tall. 8 lines of writing. Repaired professionally. (7/10) £64.90

**E49. 'HARDINGS DAIRY/ RICH CREAM/ BITTERNE PARK CREAMERY'.** 3.7ins tall, off white body, red brown wide necked top. Some wear to R. (8/10) £31.86



**E50. 'H MATTHEWS/ MANUFACTURING/ CONFECTIONER/ Plymouth',** fruit preserve jar. Heavy aqua glass, 6.8ins tall, heavy rolled lip. Exc (9/10) (GM) £23.60

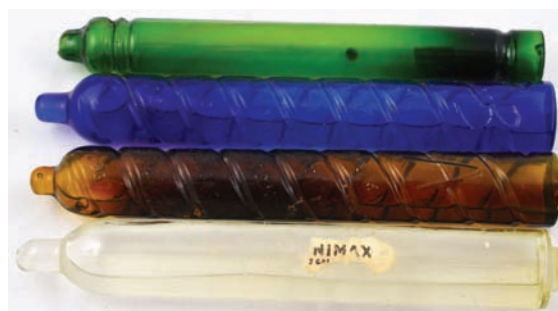
**E54. CORNISH MINERALS GROUP.** 1. Tywardreath 10oz codd. 2. J FEWINGS/ TAUNTON. 3. D VENNING & Son/ LISKEARD shouldered beer. 4. REDRUTH BREWERY 6oz codd. 5. W & E CARNE. TRURO cylinder. All aqua. (5) (8/10) (GM) £29.50



**E51. P. PROWSE/ DODBROOK g.b. duo, both std, all white.** One carries a heavy crude black transfer, other is horizontal oval bordered variant - greater/ really crisp detail! Some damage. (2) (7/10) £17.70



**E55. GROUP OF CYLINDER FIRE GRENADES.** Largest 8.5ins, 1. Green, unembossed - end off/ empty 2. MINIMAX amber embossed down body, 'A' to end 3.



Similar to 2 but cobalt, 'B' embossed to end 4. Clear glass partial label (4) (8/10) £29.50





**E56. WHITEWAYS/ DEVON CYDER,** large dispenser, metal handle, spigot one side. Good (8/10) £8.26

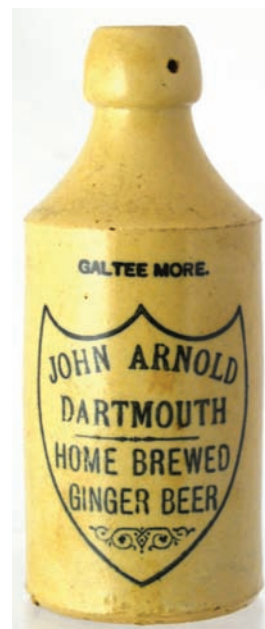
**E57. Black glass cylinder wine, c. 1870.** Crude heavy small size, 8.8.ins tall, good base pontil. Heavy shoulder seal - crown with 'C' beneath (crest of Baron Clinton, Devon). Damage to left of side - star crack (7/10) £67.26



**E58. JOHN ARNOLD/ DARTMOUTH/ HOME BREWED/ GINGER BEER.** St, all white - Galtee More above shield border transfer - patent hole to lip. Very good. (9/10) £23.60



**E59. G H SKINNER/ EXETER** large size dark aqua glass narrow necked hybrid. Scroll entwined letter 'S' t.m. to centre & 'S' near base. To rear in circle - Codd's/ Patent & Within' Barnett & Foster/ Sole/ Agent/ London/ S'. Excellent - nay SUPERB! (10/10) £389.40



**E60. MUMBY & CO Ltd/ PORTSMOUTH** vivid green glass, acid etched soda syphon with large detailed coat of arms 'to HM the King'. Curbed lines to body. Lovely colour. (9/10) £47.20

**EXTRA  
LOTS  
taken  
EARLY  
at the  
show**

**BBR AUCTIONS** presents the **the Bacco Collection**

**DATE CHANGE**  
Sat 1 & Sun 2 April 2017

**The collection**  
A magnificent & extensive single owner collection featuring many fine original shop cabinets & shop counters, large quantity showcards, enamel signs, mirrors, tins, pipes (every imaginable shape & size), enormous range of tobacco jars (Della Robbia, Staffordshire, Doulton, Horace Elliott Streatham Hill, treen etc), trade catalogues, & very much more (all tobacco related) - right down to an original tobacconists brass shop counter till (an absolute beauty).

**The catalogue**  
Full colour cat. illustrating every lot (£5 UK, overseas £11 Av), pdf (£3), plus on thesaleroom.com (2 weeks prior).

**Viewing**  
Full week prior, much already currently on display in BBR's new saleroom.

**Bidding**  
Live on saturday & live on internet, plus absentee & telephone bids

**BBR, Elsecar Heritage Centre, Nr Barnsley, S. Yorks., S74 8HJ**  
t: 01226 745156 e: sales@onlinebbr.com www.onlinebbr.com

**Autumn Extravaganza** **BBR AUCTIONS**

**S74 8HJ** Europe's **LARGEST** specialist quarterly event of its type

**Saturday 1 Oct** 500+ lot Unreserved Auction  
**Sunday 2 Oct** MAJOR cat'd Auc. & BIG Show

**120-150+ stalls from all over the UK**

**Entry access off M1**  
- Spillholder charter  
- NEW displays  
- Always fully booked  
- Antiques Centre  
- £50 FREE draw  
- 2 B&B houses  
- All under 1 roof  
- FREE Parking  
- All day catering

**the saleroom**  
live on: the saleroom

**Sat 1. 11. Unres'd Auction**  
Doors 9am-5pm. Unreserved lots - across every collecting field - suitable entries - deliver to Elsecar as soon as possible

**Sun 2. cat'd Auc. 11. plus the BIG Show**  
120-150+ stalls E.E. 8.30am-5.00pm Ord Adm'n 10am-2pm  
Auc starts 11am Pot lids, whisky jugs, tees, cures, Advertising, potons, g.b's, salt glaze, black glass. Every Sun lot cat illust'd.

**BBR, Elsecar Heritage Centre, Barnsley, S. Yorks, S74 8HJ**  
t: 01226 745156 email: sales@onlinebbr.com www.onlinebbr.com

**next 4 auc. cats £20 pdf £3**  
Paym't to BBR email

**Currently accepting single items to entire collections for Oct. & upcoming sales email: sales@onlinebbr.com**





# BBR Terms & Conditions of sale

## CONDITION

**ALL ITEMS SOLD AS SEEN** - buyers must satisfy themselves of condition - **STRICTLY NO RETURNS**

Many items are of an age/ nature precluding their being in pristine condition. Some catalogue descriptions may refer to damage/ & or restoration. Omission of such does not imply a lot is free from defects, nor does any reference to a particular defect imply the absence of others.

## IMPORTANT

No statement in this catalogue shall be deemed a warranty, representation or assumption of liability in respect of date, size, condition, quality, importance or provenance. The ultimate judge, and therefore onus, is with the buyer.

## BIDDING

The highest bidder is deemed the purchaser. Advances on each lot determined by the Auctioneer.

## BIDDING FOR SOMEONE ELSE?

If you intend to purchase items for another person it is essential you obtain a **SEPARATE bidding number AND PAYMENT DETAILS.**

## POSTAL BIDDING

Performed on behalf of absent buyers trying to buy items as cheaply as possible competing with other bids. No charge for this.

## POSTAL BID SHEETS

Tied bids - first to arrive secures - this can result in bidding the same price as someone else but **NOT**

securing. It is in your best interest to return forms soon as possible. **If you tel or fax bids through you MUST ALSO post off the bidding form, even though it may arrive after the sale.**

## EVERYTHING OFFERED NO RESERVE

## PAYMENT

Tel/ postal/ fax & floor bids are a strictly legally binding contract. Purchases must be paid for immediately.

## CREDIT CARD PAYMENTS

Not available on sale day as away from BBR office. Postall successes conducted upon return..

## POSTAGE

Postal purchasers **MUST** advise how they wish items sending. Full p & p costs borne by purchaser. Following a sale we pack, weigh, & invoice for total amount, inc. p & p.

## POSTAL BUYERS

Packing & weighing can take one working week to complete - **please remain patient.**

## BBR PACKING

**Generally our costs are much less than half competitors - such as Mailbox etc.** We try to keep costs low: packing time & materials used. We have extensive experience with all manner of shapes, sizes, & fragility, which may require special boxes! Very bulky or heavy items we suggest carriers rather than Parcel Force. If you have a preferential carrier **please advise when forwarding bids.**

## INSURANCE

BBR can insure goods in transit **IF REQUESTED.** **UK PO rates:** 75p up to £150 goods value, £1.35 up to £500 value. **NOT** done unless

specifically requested **at time of bidding.**

**The PO does not insure for pottery or glass - only consequential loss**

## OVERSEAS PURCHASERS

Insuring goods requires declaration of **FULL** value. You decide disadvantages/ advantages regarding customs - & advise - on bidding sheet.

**AGENTS** In all cases BBR act only as agents between Vendor & Purchaser.

**COMMISSION** 15% buyers premium on hammer plus VAT.

**PRICES REALISED:** Email: sales@onlinebbr.com, also downloadable off BBR website: www.onlinebbr.com, OR send a stamped addressed envelope.

**HELP US TO HELP YOU!** If you spot damage or condition differences we have not **PLEASE INFORM US!**

**before bidding by post, or at the sale, it is important to read, fully understand & accept BBR's Terms & Conditions**

**www.onlinebbr.com**

## BIDDING INCREMENTS

**UP TO £50** rising in bids of £2, £5, £7, £10 etc.

**After £50** bids rise in £5 steps. **After £100** bids rise by £10.

**After £200** bids rise by £20, £50, £70. **After £500** bids rise in £50 steps. **After £1,000** bids rise in £100 steps

**Toward conclusion rises at auctioneers discretion.**

**Want additional information about any lot?**

**The last thing we want is anyone to receive something not what they thought. We therefore ask you to tel. for a more specific condition report**

**Tel., leave lot numbers interested in, call back 5 mins later, when items will be by the phone for AB to describe.**