

Sun 11th Sept Chessington Show

Community College KT9 2JS

BBR 'On the Road' Entirely Unreserved Auction

Commission 15% on hammer, immediate payment taken, we bring items to you.

S1. HORNER'S/ DEVONSHIRE/ CLOTTED/ CREAM... Tall all white bodied cylinder with purple transfer to front (8 lines of writing) & rear (14 lines). Exc A1 condition £43.66



BBR is dispersing several collections - lots carry provenance initials:
NL = Norman Lewis
KB = Kevin Boyle
CM = Chris Mortimer
GM = Garth Morrison
MH = Michael Harris
AB = Alan Blakeman



S5. 'JOHN HARE'S/ STONE GROUND/ SELF-RAISING/ FLOUR/ HENLOW/ BEDS'. Rectangular cloth sacks, 11.5 x 7ins tall. red printed to front. Minor creases - generally very good. 94) (NL) £17.70

S6. J MILLS & SONS LTD/ OSSARY ROAD/ LONDON SE. impressed both sides of a t.t. flagon. Base spigot, metal handle. Doulton & Co p.m. Good. £7.08



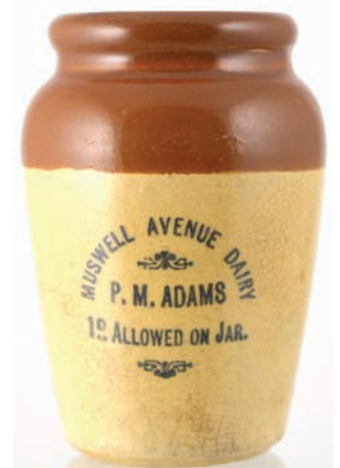
S2. PHILPOTT/ 1892/ RAMSGATE' 10oz aqua codd with extraordinary bulb neck featuring 4 indents to the top of the bulb. Rear embossed 'J W Dobsons/ Patent/ Barnsley'. Exc/ A1 £37.76



S3. PROBYN'S/ GINGER BEER, std, t.t, g.b. Excellent strong rubber stamp of shapely lady to centre, unicorn t.m. above. Bourne Denby p.m. Under edge base flake & rear hairline £7.08



S7. 'WHEELERS/ WYCOMBE'. 10.3ins tall, heavily embossed black glass beer with large spread winged swan pict. t.m. to centre with ornate outer border. Exc/ A1 £8.26

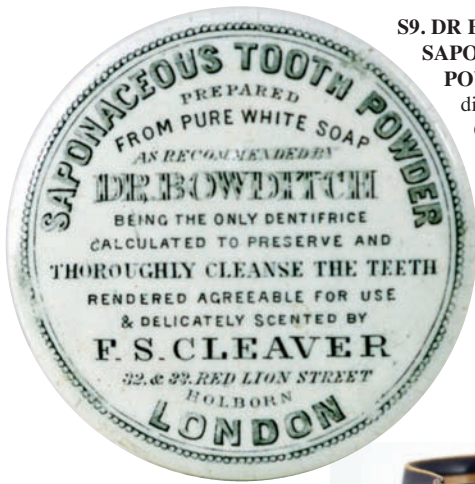


S4. J. MILLS BEEHIVE TOP DUO. A 6oz aqua codd, heavily embossed front & back, includes 'Rd 43102' both sides of neck pinch, plus a very dark brown/ black glass g.b. Both fairly good (2) (GM) £11.80



S8. 'MUSWELL AVENUE DAIRY/ P.M. ADAMS/ 10 ALLOWED ON JAR' black transfer on fat bodied t.t., cream pot. Some staining, no damage £100.30

Tried • Tested • Trusted
www.onlinebbr.com
more sales...
more often



S9. DR BOW DITCH/ SAPONACEOUS TOOTH POWDER pot lid, large 3.4ins diam, 14 transferred lines. Overall very good, near side hairline. £9.44

S13. Pair of early freeblown black glass cylinders, one wide bodied squat, 9.25ins tall, other 8.2ins (fabulous lip finish!). Both pontilled. Taller has some shoulder dullness otherwise both good (2) £37.76



S10. 'DEWARS/ WHISKY' stoneware water jug, 4ins tall, dark green top, lower tan salt glaze. Spigots all round plus sprigged lettering to front belly, 2 tiny lip flakes. Doulton mark imp'd to base. £10.62



S14. 'SPENDIFF BROS/ FAVERSHAM' black transferred 2 1/2 gall handled flagon, spigot to base. T.t. lrg black transfer with big central pict. t.m. Skey p.m. Very good. £47.20



S11. ALEXANDRA PALACE mineral water duo. Stumpy green seltzer type with internal screw stopper, plus tall aqua blob bottle. Both heavily embossed & featuring entwined initials t.m. Good (2) £118.00



S15. 'WIGTOWNSHIRE CREAMERY/ STRANRAER' off white, wide necked, cream pot. 4.5ins tall, really excellent detailed black transfer with large milkmaid pict. Very goo/ Exc £7.08



S16. SIX BOXED SETS OF GUINNESS PLAYING CARDS. 4in heavy card boxes, variously coloured/ decorated, 1 in green padded box, smallest box as 2 books. Good (6) £9.44

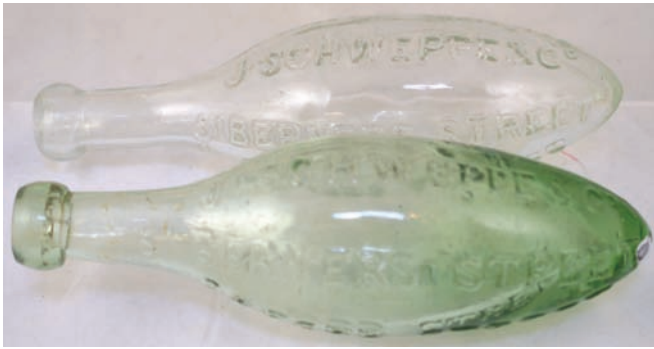
S12. CODDS/ PATENT/ 4/ LONDON/ SE aqua glass, early narrow neck codd. rare square edge based codd embossed to base 'Ardsley/ Nr Barnsley'. Small neck stress crack - does not detract. A very rare offering! £25.96



ABSENTEE BIDS

Should reach BBR no later than Thursday
email/ tel to double check:
sales@onlinebbr.com

**LATE ENTRIES TAKEN ON THE DAY
catch AB EARLY - SAME DAY PAY OUT**



S17. PAIR OF SCHWEPPE'S HAMILTONS. Two approx 9.4ins long. Point based hamiltons - 1 aqua, 1 clear glass (not old). Both embossed 'J Schweppes & Co/ Genuine Superior/ Aerated Waters. Good (2) (GM) £5.90

S18. 'LACTIC BACILLI/ MILK/ PREPARED BY/ THE/ EXPRESS DAIRY CO LTD'. Straight sided, off white, wide necked pot. Black transfer. Base imp'd 'Causton Makers & Co/ London' with regd no. An unusual offering. Minor wear, rusting £47.20



S19. 'THE CHELTENHAM MINERAL WATER CO' upright deep golden amber/ brown cylinder. 9.2ins tall, (top of stopper). Heavily embossed all over with pict t.m. to one side. Exc. Superb looker? (GM) £5.90



S21. CLAYTON'S/ PURE/ TABLE WATERS' 2 gall t.t. flagon, metal handle, base spigot. Imp'd to rear 'Clayton's/ London SW'. Good. £12.98



ABSENTEE BIDS
Absentee bids to be with
BBR no later than
Thursday prior or email:
sales@onlinebbr.com

S22. JOSIAH/ RUSSELL/ & CO small size vibrant green glass round ended cylinder, 7ins long. Three heavily embossed lines of writing. Fabulous colour & condition (GM) £61.36



S23. EPSOM clear glass bottle, 7.8ins tall. Very heavily embossed 'R & M' to shoulders, 'Randall/ Measures/ high Class/ ... Mineral Waters'. To rear 'Open/ with/ a coin'. Most unusual. very good (GM) £1.18



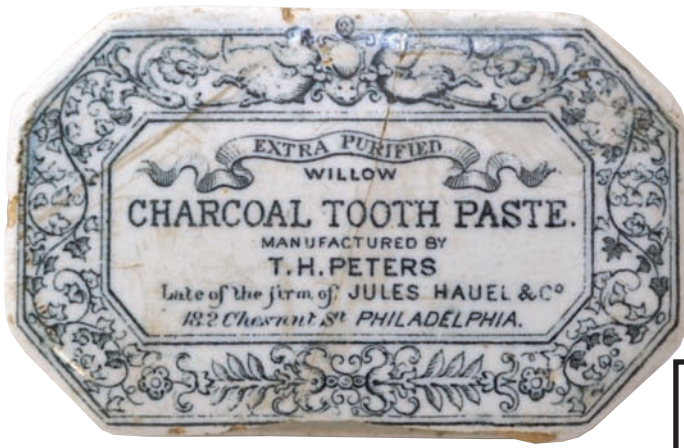
S20. 'R H CUMBERS & CO/ CHISWICK' upright aqua mineral. Embossed to rear 'Chapman's/ Patent/ birkenhead'. Ball intact. Minor wear - overall very good (GM) £5.90



S24. PAIR 'HAIG/ SCOTCH WHISKY' oval ashtrays. Largest 5.5ins long. Vivid red glaze with 4 black transfers all around. Transferred 'Carltonware' to base. Exc (2) £2.36



CONDITION Before bidding please ensure items meet your condition requirements - **INSPECT!** On sale day **ALL** items sold - **AS SEEN, NO RETURNS**



S25. JULES HAUEL & CO/ ... PHILADELPHIA' rectangular pot lid & base. Highly ornate transfer & outer border. Embossed all around the base 'TM peters & Co...' Damaged - worth restoring (AB) £5.90

FULL RESULTS
will be posted on
BBR's website & FB
page - Mon or Tues
after, also on all
forums, or simply
email AB for the pdf:
sales@onlinebbr.com

S29. FORTNUM & MASON LIMTD/ POTTED GAME' Large size pot lid, 4ins diam. Equally large, detailed, coat of arms to centre. rear underside long flake/ chip & a 'blow mark' to letter 'P' on Piccadilly £4.72



S27. 'COHENS/ 438 CALEDONIA ROAD LONDON' champagne necked aqua mineral. Large lion pictorial one side. To rear 'Manufacturers/ Alexandra and Austin London/ Cohens Patent'. Some sickness. Very rare (GM) £4.72

S26. OWEN J CARTER & CO/ Wine & Spirit Merchant/ CHATHAM'. 1 gallon flagon, t.t., imp'd to shoulder '1047'. Very good £1.18

S30. PAIR OF COLOURED PRATT LIDS 1. 'The Wolf And The Lamb' multicoloured pot lid - good strike & colours. Several chips underneath 2. The Late Prince Consort - cracked (neatly) in half (2) £4.72



S28. 'BATEY/ B & Co Ld' bright green curvilinear blod top ginger beer. To rear 'ALBION'. Base also embossed. Delightful vibrant colour. Very good (GM) £10.62

S31. TWO ORIGINAL BLACK & WHITE SHOP FRONT PHOTOS. One featuring a shop window for 'Wolsey' clothing (8 x 10ins), other features a shop window of shirts (4.3 x 6ins). By 'S Shrubbs/ Farnham'. Great - esp big one! £8.26





S32. MAIDSTONE & LONDON 1 gallon handled (damaged) t.t. flagon with bottom spigot. really great front **black** transfer, ornate 'I Sherwood, Foster & Stacey...Brewers...Spirit Merchants'. £11.80

S33. GUILDFORD 'CODDS PATENT/ 4/ MAKER/ DAN RYLANDS/ BARNESLEY'. "CASTLE BREWERY..." front 5 lines embossed across this good condition 10oz codd £1.18



S37. COLD CREAM POT LID. 2.75ins diam, large lettering to centre with very ornate border. Some rusting in the staining - will clean easy - otherwise good £3.54



CONDITION REPORTS

Absentee bidders can
tel: **01226 745156** or email:
sales@onlinebbr.com

S34. 'J MILLARD & CO/ 64 SEYMOUR ST/ MARBLE ARCH W' - front panel of a square base, 9ins tall rectangular square bodied bottle with faceted corners. very minor internal stain. Heavy blood lip. Good £8.26



S35. CARRICKS CUMBERLAND/ DAIRY CO LD/ PURE/ Thick Cream/ Fresh Daily/ Low Row/ Nr Carlisle'. Off white handled cream jug, 4ins tall. very well potted. Good £14.16



S38. 'CSSA' impressed to the shoulder 1 gall t.t. handled flagon. Lrg Doulton & Co/ Limited/ Lambeth' p.m. Sure someone will know where it is from? £9.44

FUTURE BBR AUCTION ENTRIES

can be dropped @ the BBR stall at ANY UK Show.
Please advise if there is any volume so
we can accommodate for our return trip!

LATE ENTRIES TAKEN FOR THIS SALE ON SHOW DAY - catch AB EARLY SAME DAY PAY OUT



S39. WEBBS/ LONDON
round bottomed
cylinder, 9.5ins
long, blob lip,
heavily
embossed.
Superb/ gorgeous
red brown glass.
(9.5/10) (GM)
£106.20



**S40. HILLS/ CHAPMAN & CO/
CAMBERWELL** small 7.3ins aqua glass
mineral with wired on metal closure with raised
lettering to cap 'Cohens/ London/ Patent'. Rarely
intact. very good (GM) £5.90



**S41. 'The Shepherd Boy' multicoloured pot
lid (KM 280).** Good strong strike & colours -
view of shepherd & trusty dog overseeing the
safety of his flock. Exc/ A1 £8.26



**S43. FENN FARNHAM 10oz aqua bulb style
codd** (odd indents above shoulders). to rear
base '4' & 'reliance Patent/ Sole Maker/ Dan
Rylands/ Barnsley'. Some cloudiness. Unlike
any other Reliance I've seen? (GM) £1.18



S44. LONDON SUPER AERATION
green top, std, g.b. Large transfer with
pictorial of lady & radiating lines. Lovatt
& Lovatt p.m. Minor flake, overall a
really good example £49.56

**S45. BUSHELL
WATKINS & SMITH
LTD/ WEESTERHAM/
KENT**, t.t., 2 gall flagon,
metal carrying handle. 4
imp'd lines - '1097' at top.
Very good. £17.70



**S42. BARRETT & CO Ltd/
LONDON** dark/ black
glass g.b. Pictorial patent t.m. to front, to
rear 8 further heavily embossed lines of
writing



7.4ins tall.
Some minor
(to clean?)
patches.
Superb!
(GM)
£14.16

**S46. 'WRIGHTS DAIRY/
CHURCH ST CHELSEA' 4.3ins
tall, cream bodied straight sided
cream pot**, wide top (for card
cover). Transferred with 5 lines
writing & entwined initials to
centre. Quite a scarce pot. Very
good £41.30



BBR Auctions

Tried • Tested • Trusted
www.onlinebbr.com
more sales...
more often

S47. 'TO HM THE QUEEN/ HOOPER & CO/ PALL MALL EAST/ LONDON' golden amber glass, early blob lip, seltzer. To rear, vertically 'ROYAL/ GERMAN/ SPA'. Minor wear, no damage. A rare little seltzer! £20.06



**EXTRA
LOTS
taken
EARLY
at the
show**

S50. KINGSTON BREWERY/ H.K.B. Co LD/ SURREY pint sized black glass beer, 10ins tall. Very heavily embossed with large central pict. t.m. of a 'K' & barrel plus 3 fishes. Fabulous! £61.36



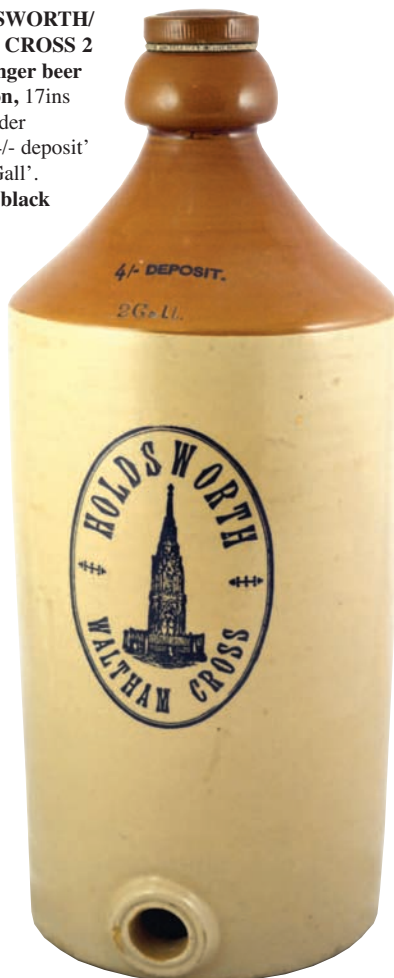
S49. CODDS PATENT/ LONDON early narrow necked aqua codd. 8.5ins tall. Embossed in 2 lines to one side. great shape and most unusual? Some haze (GM) £16.52



S48. TRUMANS handled bar top water jug. Straight sided with everted top rim, pouring lip & handle to rear. Multicoloured transfer of pub exterior with dray horses outside & pub sign 'The Sign of a good house'. Green transferred Doulton base p.m. A scarce & good quality jug £14.16



S51. HOLDSWORTH/ WALTHAM CROSS 2 gallon t.t. ginger beer shaped flagon, 17ins tall. To shoulder transferred '4/- deposit' & imp'd '2 Gall'. Large strong black oval transfer with big pictorial of a detailed church. Spigot to bottom. Bourne Denby p.m. & original int screw stopper. Exc/ A1 - a belter! £259.06



Autumn Extravaganza

BBR
ACTIONS

S74 8HJ Europe's **LARGEST** specialist quarterly event of its type

Elsecar Heritage Centre
S74 8HJ

120-150+ stalls from all over the UK

• Easy access off M1
• Disabled access
• M101 display
• Always fully stocked
• Antiques Centre
• C19-18th items
• 2 BBR Auctions
• All under 1 roof
• FREE Parking
• All day catering

the saleroom
live on

Saturday 1 Oct
500+ lot Unreserved Auction

Sunday 2 Oct
MAJOR cat'd Auc. & BIG Show

Sat 1. 11. Unres'd Auction
Doors 9am 500+ Unreserved lots - across every collecting field - suitable entries - deliver to Elsecar as soon as possible

Sun 2. cat'd Auc. 11. plus the BIG Show
120-150+ stalls E.E. 8.30am-5pm Ord Adm'n 10am-5pm
Auc starts 11am Pot lids, whisky jugs, inks, cures, Advertising, poisons, g.b's, salt glass, black glass. Every Sun lot cat illust'd.

BBR, Elsecar Heritage Centre, Barnsley, S. Yorks. S74 8HJ
tel: 01226 745156 email: sales@onlinebbr.com www.onlinebbr.com

next 4
Auc. sets £20
pdf £3
Payroll to
BBR email

