



**BBR's 2015 Spring  
Extravaganza w/e**

# **Antique Bottles, Pot Lids & Advertising**

**Sunday 26 April  
Major Show & Auction**

**Saturday 25 April  
500+ lot Unreserved Auction**



Ginger beers Tins Poisons Old cabinets Pub Jugs Salt Glaze Pot lids Minerals Pharmacy Inks  
Stoneware Black glass Whisky jugs Kitchenalia Early Doulton Cream pots Guinness Enamel signs



# Spring Extravaganza

**Saturday**

**25 April**

**Unreserved Auction**

**Sunday**

**26 April**

**Blg Show & Auction**



**SATURDAY Auction Blg 21** Doors open 9am **Sale 11am**

**SUNDAY Show & Auction Blg 21** EE 8.30am Auction viewing from 9am **Sale 11am**

Postal, tel. (book lines early!) & fax bidding facility. Low cost after sale p & p worldwide

**Buyers premium 15%, plus vat - only on premium**

**Sunday auction held beside BBR's WinterNational for which there is an admission charge**

**FREE PARKING**

**ACCOMMODATION:** see list to rear of catalogue, or email BBR

**Viewing stops approx. 10 mins. before sale start @ 10.50am. Sunday sale day bidders must register & obtain a bidding number. All lots sold 'as seen' on sale day. Bidders must view & inspect goods beforehand, & accept BBR's Terms & Conditions - see rear of cat. Payment & collection can take place throughout the sale.**

*Catalogue prepared by Frank Burgin, Clare Bell & Alan Blakeman*

**Collector provenance stickers** are included on lots from a number of major collections

**BBR is currently dispersing:** CM = Chris Mortimer KB = Kevin Boyle JR = John Rowe

NL = Norman Lewis IM = Ian McKenzie AB = Alan Blakeman DD = Dr Dudley Davidson

the Chris  
Mortimer  
collection



**John  
Rowe**  
collection



the Norman  
Lewis  
collection



the Michael Harris  
Collection



the Kevin  
Boyle  
collection



the Ian  
MacKenzie  
collection



the Alan  
Blakeman  
collection



the Dr Dudley  
Davidson  
collection

**BBR, Elsecar Heritage Centre, Nr Barnsley, S Yorks., S74 8HJ**

tel: **01226 745156** fax: **01226 361561** email: **sales@onlinebbr.com**

## Pratt lids

### 1. BEAR PIT (KM 6)

3.5ins diam, **multicoloured** pot lid produced by the Pratt Factory. Fancy border with brown wavy lines version. Flange restoration. Scarce large size lid. NR £60-80+.



2. BEAR PIT (KM 6). 3ins diam, **multicoloured** pot lid & base produced by the Pratt Factory with dome version. Overall good. NR £30-40+.



### 3. BEAR PIT (KM 6).

3ins diam, **multicoloured** pot lid produced by the Pratt Factory minus dome variant. Good strong print & colours. Good. NR £30-40+.



### 4. ALAS POOR BRUIN (KM 1).

3.25ins diam, **multicoloured** pot lid, produced by the Pratt Factory. Line & dot border with lantern version. Overall rust staining. Good. NR £50-60+.



### 5. BEARS ON ROCK (KM 10).

3ins diam, **multicoloured** pot lid & base made by T.J. & J. Mayer. Minor underside flange nibbles. Good strong colours. NR £30-40+.



### 6. BEARS AT SCHOOL (KM 9).

3ins diam, **multicoloured** pot lid & base, produced by the Pratt Factory. Some pink staining to lid & inside base (repair). NR £30-40+.



### 7. BEAR LION & COCK (KM 19).

3.25ins diam, **multicoloured** pot lid produced by the Pratt Factory. Line & dot border. Couple of insignificant bottom edge flakes. Good. NR £30-40+.



### 8. THE PARISH BEADLE (KM 322).

3ins diam, **multicoloured** pot lid, produced by the Pratt Factory. Chip under top edge (11 o'clock) & chips to flange. Good strong colour & print. NR £60-80+.



## Bears grease pot lids

### 9. BEARS GREASE POT LID. 2.75ins diam,

'GENUINE RUSSIAN BEARS GREASE LONDON/ FOR STRENGTHENING & PROMOTING THE GROWTH OF HAIR' standing chained & muzzled bear pictured. Large decorative border. Some flange restoration. NR £60-80+.



## SALE DAY FLOOR BIDDERS

- all items sold **AS SEEN**. Bidders must ensure lot/s meet personal condition standards.

**TERMS & CONDITIONS** are printed to catalogue rear. All bids accepted on the understanding these have been read & accepted





**10. BEARS GREASE POT LID.** 3ins diam, 'JAMES ATKINSON'S BEARS GREASE/ 24 OLD BOND STREET LONDON/ PRICE 5s'. Chained & muzzled bear pictured. Most of gold band intact. **Rare size.** Slight staining. NR £60-80+.



**11. VERITABLE MOELLE BOEUF POT LID & BASE.** 2.75ins diam, blue & white transfer. Bull pictured to lid & base. 'VERITABLE MOELLE ... 37 BOULEVARD DE STRASBOURG/ PARIS'. Lid hairline. Very good strong crisp transfer. NR £60-80+.



**Toothpaste pot lids**

**12. SANOLINE TOOTHPASTE POT LID.**

3.25ins diam, 'LORIMER & CO/ MANUFACTURING PERFUMERS LONDON & NEW YORK' 3 pretty girls pictured. Hairline & chip to flange. Fantastic & very rare pictorial. NR £60-80+. (NL)



**13. CROWN PERFUMERY CO TOOTHPASTE POT LID & BASE.**

With original paper label, 3ins diam, 'CHERRY TOOTHPASTE CROWN PERFUMERY CO/ LONDON' crown pict. t.m. Base label 'DUMMY'. Rare! Very good. NR £60-80+.



**14. LORIMER & CO TOOTHPASTE POT LID & BASE.**

4ins diam, 'ARECA NUT TOOTHPASTE/ LORIMER & CO .... LONDON & NEW YORK'. Mosque & palm trees pictured. An exceptionally, impressive large size lid. Minor staining. NR £80-120+. (NL)



**15. ARECA NUT TOOTHPASTE POT LID.**

3.25ins diam, 'ARECA NUT/ CHAUVIN ET CIE/ TOOTHPASTE PARIS ET LONDRES' men in boat & cherries pictured. Unusual large size - very strong black transfer. Bottom flange flake. NR £40-60+.



**16. BURGOYNE BURBIDGES TOOTHPASTE POT LID.**

3ins diam, 'BURGOYNE, BURBIDGES & COS/ CHERRY TOOTHPASTE' long haired girl pictured. Chip beneath top edge. Still one of the UK's rarest pictorials - fantastic. NR £100-200+. (NL)



**CONDITION - help us to help you!**

If you spot condition differences/ faults/ repairs we haven't please advise BBR staff. We always announce such amendments prior to a sale.

**BBR Auctions on Facebook**

Auc. results, News, Updates regularly added to BBR Auctions on FB - simply befriend us!





**17. NAPOLEON PRICE & COS TOOTHPASTE POT LID.** 3.5ins diam, **yellow & bronze** transfer. 'NAPOLEON PRICE & COS/ CHERRY TOOTHPASTE/ FOR BEAUTIFYING & PRESERVING THE TEETH

& GUMS/ 27 OLD BOND ST LONDON'. Portraits to centre. Beaded outer border. Some minor rust crazing generally very good. NR £60-80+.

**18. ROCHESTER TOOTH-PASTE RECT-ANGULAR POT LID.** 3.25 by 2ins, 'BARNABY'S/ CHERRY ARECA NUT/ TOOTHPASTE STAR HILL/ ROCHESTER'. Two pinhead size base nicks. NR £40-60+.



**19. THE CROWN PERFUMERY CO OVAL POT LID & BASE.** 4ins across, '... WHITE CHERRY/ TOOTHPASTE/ 177 NEW BOND ST LONDON'. Rare. Considerable restoration. NR £30-40+.



**20. HASTINGS TOOTHPASTE POT LID.** 2.5ins square, 'SHURZINE ANTISEPTIC TOOTHPASTE/ NEVE & CO 12 WELLINGTON PLACE/ HASTINGS'. Some rusting, overall very good. NR £30-40+.



**21. HOVENDEN TOOTHPASTE RECTANGULAR POT LID.** 3.25 by 2ins, 'THE/ HOVENDEN/ TOOTHPASTE PREPARED BY/ R. HOVENDEN & SONS/ LONDON'. Highly decorative outer border. Super sharp print. Very good. NR £30-40+.



**22. TOOTHPASTE POT LID.** 3ins diam, pictorial lid showing men in boat shooting ducks 'TOOTHPASTE' to banner across lid. Chips/ flakes to flange. Scarce large size. NR £40-60+.

**23. TREMEER'S TOOTHPASTE POT LID & BASE.** 2.75ins diam, **black** transfer on **red** background 'TREMEERS/ CHERRY/ TOOTHPASTE/ APPRECIATED BY ALL CLASSES'. Some recolouring to top & restoration. Great looker! NR £40-60+.



**24. RIMMELS TOOTHPASTE POT LID.** 3ins diam,

**multicoloured** pot lid produced by the Mayer Factory 'RIMMELS CHERRY TOOTHPASTE' bunch of cherries pictured. Traces of paper label to flange. Some fading to lettering & crazing. NR £40-60+.



## EITHER OR BIDS

Absentee bidders on a tight budget can use BBR's unique 'either' 'or' option. Bid £X on a lot £Y on another, if unsuccessful. We can even carry amounts over. **BUT** - make instructions simple & clear! If in doubt email AB.

## AFTER SALE PRICES REALISED

on: [www.sales@onlinebbr.com](mailto:www.sales@onlinebbr.com)  
or Facebook - BBR Auctions  
or email BBR for a pdf: [sales@onlinebbr.com](mailto:sales@onlinebbr.com)



**25. ROCHESTER TOOTHPASTE POT LID.** 3ins diam, 'WYATT'S ARECA NUT/ CHERRY/ TOOTHPASTE PREPARED BY/ C.F. WYATT/ 206 HIGH ST/ ROCHESTER'. Geometric

decorative outer border. Sharp

black print. Minor flange nibbles. NR £30-40+.

**26. HOCKINS TOOTHPASTE POT LID & BASE.** 2.75ins diam, 'HOCKIN'S/ CHERRY/ TOOTH/ PASTE' to scroll with cherries pictured. Strong black transfer. Pin head 'nick' to top. Good. NR £30-40+.



**27. BREIDENBACH & CO TOOTHPASTE POT LID & BASE.** 3ins diam, 'CARBOLIC/ TOOTH PASTE/ MADE BY BREIDENBACH & CO/ LONDON W.' Highly ornate design. Minor staining, overall good. NR £30-40+.



**Cold cream pot lids**

**28. COLD CREAM POT LID.** 3ins diam, landscape pictorial lid, with floral ornate surround 'COLD/ CREAM'. A truly stunning sharp heavy black transfer - best of these I've ever seen! Minor underside staining but overall very good. NR £30-40+.



**29. JOHN GOSNELL & CO COLD CREAM POT LID & BASE** (some damage). 2.5ins diam, '... PERFUMERS TO HER MAJESTY

QUEEN ALEXANDRA CHERRY BLOSSOM CREAM/ FOR SOFTENING & BEAUTIFYING/ THE SKIN'. Foliate decoration. Superb sharp print transfer. Good. NR £30-40+.



**30. FOLKESTONE COLD CREAM POT LID.** 3ins diam, 'GILES/ COLD/ CREAM/ FOLKESTONE'. Simple design, sharp black transfer. Exc/ A1. NR. £30-40+.



**31. HEREFORD COLD CREAM POT LID & BASE.** 3ins diam, 'OTTO OF ROSE/ COLD CREAM/ PREPARED BY/ CHAVE & JACKSON/ PHARMACEUTICAL CHEMISTS HEREFORD'.



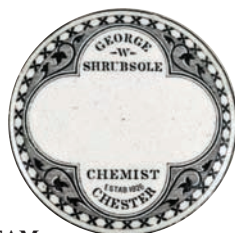
Ornate border & rose pictorial. Flange restoration. NR £30-40+.

**32. LEAMINGTON COLD CREAM POT LID.**

3.25ins diam, 'OTTO OF ROSE/ COLD CREAM/ PREPARED BY BARRETT/ FAMILY & DISPENSING CHEMIST/ LEAMINGTON'. Very large lid, really strong black print. Good. NR £30-40+.



**33. CHESTER POT LID & BASE.** 2.75ins diam, 'GEORGE/ W./ SHRUBSOLE/ CHEMIST/ ESTB 1826 CHESTER'. Blank centre area for label. Good. NR £20-30+.



**34. BRIGHTON COLD CREAM**

**POT LID.** 2.75ins diam, 'ROSE/ COLD/ CREAM/ FOR SOFTENING THE SKIN/ PREPARED BY/ SUSSEX CO-OPERATIVE DRUG CO LTD 135 QUEENS ROAD/ BRIGHTON/ & AT HOVE

EASTBOURNE/ HASTINGS ST LEONARDS/ TUNBRIDGE WELLS/ & WORTHING'. Asymmetric decorative swaithes. Very good. NR £30-40+.





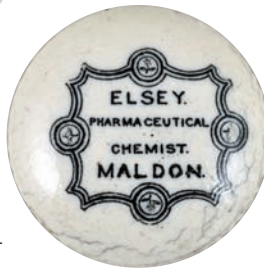


- 35. HASTINGS  
BUTTON LID.** 1.5ins  
diam, 'VINT  
CHEMIST/ WHITE  
ROCK/ HASTINGS'.  
Large crown pictured to  
centre. Good. NR £20-  
30+.

- 40. OATMEAL CREAM  
POT LID & BASE.** 2.75ins  
diam, 'OATMEAL/ CREAM/  
PREPARED ONLY BY  
JOHN SELLEY CHEMIST/  
142 EARLS COURT RD  
SOUTH KENSINGTON'.  
Good. NR £30-40+.



- 36. MALDON  
BUTTON LID.** 1.5ins  
diam, 'ELSEY  
PHARMACEUTICAL/  
CHEMIST/ MALDON'.  
Decorative border  
surround. Good. NR £20-  
30+.



- 41. YARMOUTH  
BLOATER PASTE  
POT LID & BASE.**  
4ins diam,  
'YARMOUTH  
BLOATER PASTE/  
PREPARED WITH  
SELECTED FISH'  
with 'THE YARMOUTH  
FISHING BOAT' pict. t.m.  
Flakes to flange & some  
discolouration - should clean. NR £40-60+.



- 37. DOUGLAS PERFUMER  
POT LID & BASE.** 3.25ins  
diam, 'DOUGLAS/  
PERFUMER/ 21 & 23/  
NEW BOND ST/  
LONDON'. Chip to  
flange. Hairlines & chips  
to the very large  
transferred base. NR £30-  
40+.



- 42. ANCHOVY PASTE  
POT LID & BASE.** 3.5ins  
diam, 'ANCHOVY  
PASTE/ FOR/  
TOAST BISCUITS/  
SANDWICHES/  
LONDON'. Very  
ornate coat of arms  
pict. t.m. Great  
looker! Good. NR  
£30-40+.



- 38. ENCANTDORA  
CREME POT LID &  
BASE.** 3.5ins diam,  
'UMABELLEZA  
ENCANTDORA CREME  
CHRYYSIS' with fancy hairstyle  
pictured. Transferred to side of lid &  
around base. Some discolouration,  
generally overall good. NR £40-60+.



- 43. RIMMELS  
CREAM OF  
ALMONDS POT  
LID & BASE.** 4ins  
diam, black print on  
olive background.  
'RIMMELS/  
SAPONACEOUS/  
CREAM OF ALMONDS  
E. RIMMEL PERFUMER/  
SOLE PROPRIETOR OF THE CELEBRATED/  
TOILET VINEGAR/ 96 STRAN & 24  
CORNHILL/ LONDON'. Chip & nibbles to  
flange & under top edge & to base. NR £30-40+.



- 39. NO NAME OINTMENT POT  
LID & BASE.** 3.5ins diam, 'NO  
NAME/ OINTMENT/  
WHITEHOUSE BEARWOOD/  
SMETHWICK/ PRICE 2s 9d'.  
House pict. t.m. Flange  
restoration & some surface  
scuffs. NR £30-40+.



**POSTAL BIDDERS** ... must satisfy  
themselves lot/ s meet their condition standards.  
For a more detailed inspection/ personal  
assessment please tel. BBR to speak with AB.

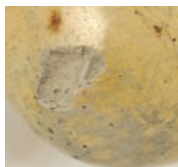




## Minerals & patents

### 44. ST IVES STONEWARE

**HAMILTON BOTTLE.** 8ins long, speckled tan salt glaze hamilton bottle imp'd 'G.M. HOPKINS/ ST IVES'. Some nice colour variations around the lip & interesting turning marks to middle section. Bottom edge 'nick' - possibly in manufacture when taken off the silica sand mound? Very good. NR £600-800+. (DN)



### 45. STONEWARE HAMILTON BOTTLE.

7ins long, mid brown (varying) salt glazed hamilton imp'd 'BATHGATE & CO CALCUTTA' to one side, 'J. BOURNE PATENTEE' (four lines of writing within an oval) p.m. to the other. Unusual elongated form. Very good. NR £500-600+. (DM)



**46. STONEWARE HAMILTON BOTTLE.** 6.5ins long, mid to fairly dark brown glazed hamilton bottle imp'd 'EX'. Very good. NR £250-300+. (DN)





#### 47. COBALT BLUE

**HAMILTON BOTTLE.** 9ins long, vivid cobalt blue glass, embossed 'GILPIN & CO/ 137 PILGRIM ST/ NEWCASTLE ON TYNE/ ESTABLISHED 1790'. Very good. NR £250-300+. (GM)



#### 51. GREEN EARLY DUMPY CODD BOTTLE.

7.25ins tall, emerald green dumpy codd bottle, slim neck. Square edge base. Bottom very boldly embossed 'OLDENBURG/ GLASHUTTE'. Fantastic colour. Very good. NR £250-300+. (MH)



#### 52. ROATH AMBER GLASS CODD BOTTLE.

7.25ins tall, golden amber glass standard codd bottle embossed 'WATSON & CO/ THE CARDIFF/ AERATED WATER WORKS/ ROATH' soda syphon pict. t.m. Slight scuffing to embossing near base. Delightful! NR £350-400+.



#### 48. SOYERS NECTAR HAMILTON TYPE

**BOTTLE.** 10.25ins long, aqua glass hamilton with bulb neck embossed 'SOYER'S/ NECTAR' to scrolls. Burst air bubble to base. Remains an exceptionally rare, early, mineral type. NR £250-300+. (GM)

#### 49. CODD/ HAMILTON HYBRID BOTTLE.

10ins long, aqua glass reliance patent codd/ hamilton embossed 'BIRMINGHAM SYPHON CO' with registered t.m. to front 'RELIANCE PATENT SOLE MAKER/ DAN RYLANDS/ BARNESLEY'. Very good - nay fantastic! NR £150-200+. (GM)



**50. HAMILTON STAND.** 4ins tall, silver plated hamilton stand. Very good. NR £30-40+.





**53. HULME  
AMBER GLASS  
CODD BOTTLE.** 9ins tall, **light  
golden amber**  
glass standard  
codd bottle  
embossed  
'GROVES &  
WHITNALL  
LTD HULME'  
with arm  
holding arrow  
pict. t.m.  
Cleaned but  
very good.  
NR £300-  
400+.

**55. AMBER GLASS CODD BOTTLE.** 8.75ins tall, **amber glass** codd bottle with ten sided base, embossed 'THE/ KEYSTONE STEAM BOTTLING COMPANY/ BIRMINGHAM' to front with warning lines to rear. Overall dullness/ scuffing - to clean or not to clean? NR £170-220+. (GM)



**56. INTERNAL  
SCREW CODD PATENT.** 9.25ins tall, aqua glass standard codd bottle with internal screw closure embossed 'WM BARNARD/ & SONS/ LONDON' near base. An exceptionally rare offering. Exc/ A1. NR £200-300+. (GM)



**54. SHIMMIN'S  
PATENT CODD  
BOTTLE.** 9ins tall, aqua glass Shimmins codd bottle, tapered base with spherical bulge chamber below the cross pinch. Boldly embossed 'SHIMMIN/ SUNDERLAND' & 'REGD' to rear. Very good. NR £400-500+. (GM)



**57. WEST BROMWICH  
GREEN CODD.** 8.75ins tall. **Mid olive green** glass. 'P A GREEN/ QUEEN/ STREET/ WEST BROMWICH'. A very good example of a midlands coloured codd, a tiny area of dullness does not detract. Good. NR £250-300+.







**58. NEWCASTLE BLUE CYLINDER BOTTLE.** 6.75ins tall, **vivid cobalt blue** glass flat bottomed cylinder embossed 'JAS McKIE & SONS/ ESTB 1835/ NEWCASTLE. Not polished. Very good. NR £150-200+. (GM)



**59. LIVERPOOL EARLY CODD BOTTLE.** 7.25ins tall, aqua glass slim neck codd bottle, flat base. Very heavily embossed 'G CORNETT/ LIVERPOOL' with lions head (?) pict. t.m. to front. 'CODDS/ PATENT/ 4/ BARNETT & FOSTER SOLE AGENT LONDON' to rear. A fantastic small sized pictorial early narrow neck with square bottom corners! Very good. NR £150-200+. (GM)

**60. AMBER LIP CODD BOTTLE.** 9.25ins tall, Dark aqua glass standard codd bottle with **red/ amber** lip. Embossed 'THIS BOTTLE IS/ THE PROPERTY OF R. WHITE/ CAMBERWELL/ NO DEPOSIT/ CHARGED' to front. 'RYLANDS PATENT/ SOLE MAKER/ RYLANDS BARNESLEY' etc. to rear. Very good. NR £60-80+. (GM)



**61. BLUE LIP CODD BOTTLE.** 8.75ins tall, aqua glass codd bottle with **blue** lip, embossed 'W.J. HOPPS LONG EATON' to front 'PATENT SAFE GROOVE/ 4/ SOLE MAKERS/ DAN RYLANDS LD/ BARNESLEY' to rear. Very good. NR £60-80+. (GM)



**62. ADAMS & BARRETT'S PATENT BOTTLE.** 8.75ins tall, aqua glass embossed 'ADAMS & BARRETT'S/ JERSEY PATENT' to one side 'LPOOL PATENT STOPPER MINERAL WATERS PROPERTY/ TRADE MARK' to the other. Complete with wooden stick stopper. Very good. NR £40-60+. (GM)



**63. STAINES SYKES MACVAY PATENT BOTTLE.** 6.75ins tall, aqua glass cylinder embossed 'TAYLOR & CO/ STAINES' with pict. t.m. to front 'SYKES MACVAY/ PATENT/ 1877/ CASTLEFORD' to rear. Great! Very good. NR £60-80+. (GM)

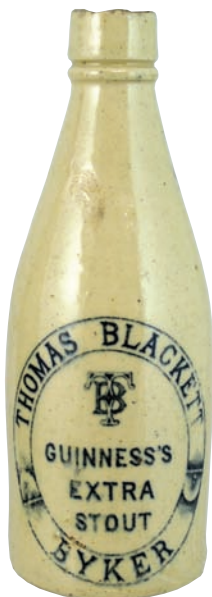




**64. ROCHESTER SODA SYPHON.** 12.5ins tall to top of chrome tap, **pink** glass acid etched 'DOVE PHILLIPS & PETT LTD/ MINERAL WATERS ROCHESTER'. Good. NR £30-40+. (GM)

#### Ginger beers & stouts

**65. GREENOCK GINGER BEER BOTTLE.** 8ins tall, ch. tan lip, blue transfer 'BREWED GINGER BEER/ LAWSON BROS/ NOSWALFA/ GREENOCK'. Lip nibbles. NR £40-60+. (IM)



**66. BYKER GUINNESS STOUT BOTTLE.** 7.75ins tall, ch. **all white, black** transfer 'THOMAS BLACKETT GUINNESS'S/ EXTRA/ STOUT/ BYKER'. Lip & base flakes/ chips. NR £80-100+. (KB)



**67. DALBEATTIE GINGER BEER BOTTLE.** St, **green** top 'BECKETTS/ SPECIAL/ STONE GINGER BEER/ DALBEATTIE'. Small base chip. NR £40-60+. (IM)



**68. BLYTH STOUT BOTTLE.** 8ins tall, ch. t.t. 'GENUINE EXTRA/ DUBLIN STOUT/ BOTTLED BY THOMAS LISLE/ WHOLESALE & RETAIL/ WINE AND SPIRIT/ MERCHANT/ BLYTH'. Buchan p.m. Good. NR £20-30+. (KB)



**69. GLASGOW STOUT BOTTLE.** 8.5ins tall, ch. **all white, black** transfer 'REIDS IMPERIAL STOUT J.H. DEWAR/ WINE MERCHANT/ GLASGOW'. Restored lip. NR £60-80+. (KB)



#### CONDITION - help us to help you!

If you spot condition differences/ faults/ repairs which we have not please advise BBR staff. As always we will announce such amendments prior to the sale.





**70. A.S. WATSON & CO GINGER BEER BOTTLE.** 6.75ins tall, st. t.t.  
'A.S. WATSON & CO LD HIGH CLASS/ BREWED/ GINGER BEER/ HONG KONG CHINA & MANILA'. Good. NR £20-30+. (KB)



**71. MILFORD HAVEN GINGER BEER BOTTLE.**  
7ins tall, st. all white  
'COOMB SPRING/ MINERAL WATER COMPANY LTD/ GWALIA/ MILFORD HAVEN'. Good. NR £30-40+.



**75. ABERDEEN GINGER BEER BOTTLE.** 7.75ins tall, ch. t.t. sepia transfer 'G. McINTOSH'S SUPERIOR/ GINGER BEER/ UNION WYND ABERDEEN'. Lip flakes. NR £30-40+. (IM)



**74. CHIPPING NORTON GINGER BEER BOTTLE.** 7ins tall, st. all white 'HITCHMAN & CO LIMITED CHIPPING NORTON' cornucopia pict. t.m. Classic UK pictorial. Good. NR £20-30+. (CM)

**72. NORTH EASTERN BREWERIES LTD**

**STOUT BOTTLE.** 8ins tall, ch. t.t.  
'THE GOLDEN MALT & HOP NOURISHING STOUT...  
SUNDERLAND/ BLACKHILL/ SPENNYMOOR MIDDLESBRO/ NEWCASTLE/ AND/ BRANCHES'. Buchan p.m. Good. NR £30-40+. (KB)



**73. ABERDEEN GINGER BEER BOTTLE.** 8.5ins tall, ch. tan lip 'FINEST/ GINGER BEER/ R & J SALMOND/ 37, 39, 41A GEORGE STREET/ ABERDEEN'. Good. NR £40-60+. (IM)



**77. HELMSLEY GINGER BEER BOTTLE.** 8ins tall, ch. t.t. black transfer 'W. ATKINSON & SONS/ CASTLE BOTTLING STORES/ CHURCH STREET/ HELMSLEY'. Castle pictorial. Buchan p.m. Good. NR £20-30+.



**76. FALKIRK GINGER BEER BOTTLE.** 8.5ins tall, ch. t.t.  
'AERATED WATER CO FALKIRK/ STAR SUPERIOR/ BREWED GINGER/ BEER'. Good. NR. £20-30+. (IM)

## EMAILS BIDS

to: [sales@onlinebbr.com](mailto:sales@onlinebbr.com) + full name, address & c. c. details, or fax: 01226361561. **YOU MUST ALSO POST BID SHEET - EVEN IF ARRIVING AFTER SALE**



## Kitchenalia

**78. MILK PAIL.** 10.5ins tall, 13.75ins diam, **white** glaze 'NEW MILK' in **gold** lettering with **coloured** floral decoration. Twin handles with **gold** highlights. Base with large **brown** transfer stamped 'DAIRY SUPPLY CO LIMITED MUSEUM ST LONDON'. (*Reputed to be from Camberwell Dairy*) with dairy thermometer in card tube. One handle repaired but never seen this design before. (2) £400-600+.



**79. STORAGE JARS.** Set of six ceramic storage jars. Tallest 7ins, **green** 'Cobblestone' design on **white** ground 'LOAF SUGAR', 'SUGAR', 'LENTILS', 'TAPIOCA' & 'BEANS'. Maling Newcastle on Tyne p.m. One jar with couple of chips to lid. (6) NR £50-



**80. STORAGE JARS.** 5 ceramic storage jars 'KLEEN KITCHEN WARE' **green** stripe on **white** ground, tallest 5ins. 'SULTANAS', 'RICE', 'BAKING POWDER', 'PEPPER' & 'BI SODA'. Kleen Kitchen Ware transferred to base. One with chip to lid. (5) NR £40-60+.

**81. SHIP & TURTLE TAVERN JAR.** 7.5ins tall, **brown** top, lower **off white** glaze 'C & E PAINTER PURVEYORS TO H.R.H./ THE PRINCE OF WALES' below rim. Raised coat of arms below 'THE DUKES OF/ EDINBURGH/ CONNAUGHT/ CAMBRIDGE & COURT OF/ BAVARIA' to sides 'SHIP & TURTLE TAVERN/ 130 LEADEN HALL STREET' near base. Very good. NR £40-60+. (DD)



**82. LONDON CLEANING FLUID BOTTLE.** 10.25ins tall, **off white** glaze, **black** transfer 'STOHWASSER & WINTER GLOIRE D' ECARLATE/ CLEANING FLUID FOR/ SCARLET HUNTING COATS/ AND/ MILITARY UNIFORMS/ 39 CONDUIT ST LONDON W'. Very good. NR £40-60+. (AB)





- 83. NURSERY SHAMPOO WASH BOTTLE.** 5.25ins tall, **off white** glaze, **black** transfer 'SHAMPOO WASH/ INDISPENSABLE FOR THE NURSERY' with directions below. Minor lip flakes. Imp'd Doulton p.m. Extremely rare. NR £30-40+. (GM)

- 84. CROSSE & BLACKWELL MEAT JUICE BOTTLE.** 4ins tall, **cobalt blue** glass shapely faceted



bottle embossed 'C & B' near base. Pontil base. Very good. NR £30-40+.



- 85. CROSSE & BLACKWELL MEAT JUICE BOTTLE.** 4ins tall, **dark aqua** glass, as previous lot (although this is much the rarer colour), no embossing near base. Pontil base. Very good. NR £30-40+.

- 86. ST IVEL CHEESE**

**STAND.** **White** matt glaze 6ins tall, 2 monk figures beside dish holding plaque with 'ST IVEL/ CHEESE' in raised lettering. Base of stand imp'd 'ST IVEL/ THIS DISH IS MADE IN THURINGIA FOR/ APLIN & BARRETT/ ... WESTERN COUNTIES CREAMERIES.../ YEOVIL SOMERSET'. Good. NR £30-40+. (GM)



## POSTAL BIDDERS ... must satisfy

**themselves** lot/ s meet their condition standards.

For a more detailed inspection/ personal assessment please tel. BBR to speak with AB.

- 87. SOAP DISH?** 12.5ins tall to top of lid, clear glass brandy glass shape with engraved lettering 'MARGERISON'. Pontil scar to circular base. Good. NR £30-40+.



- 88. SLIPPER BED PAN.** 16ins long, 6ins tall at rear. Highly ornate **blue & white** floral design, rear handle, transferred inside 'THE NEW SLIPPER BED PAN' with 6 lines of instructions below. S. Maw Son & Thompson London stamped underneath. Very good. NR £30-40+. (GM)



- 89. SLOPS BUCKET.** 9.75ins tall, **blue & white** willow pattern, ceramic bucket with cane handle. Good. NR £30-40+. (GM)



- 90. SHOP DISPLAY STAND.** 16ins diam, 3.75ins tall, **white** glaze, **black** transfer 'PARNALL & SONS ESTABLISHED 1820/ WEIGHING MACHINE GROCERS MILL & CANISTER/ MANUFACTURERS 21, 22 NARROW WINE ST/ BRISTOL', large scales of justice lady pict. t.m to centre. Some staining - should clean? Wedgwood imp'd base mark. NR £50-60+. (GM)



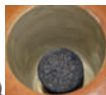




**91. WATER FILTER.** 13ins tall to top of lid, **off white** glaze, **black** transfer 'EMPIRE FILTER COMPANY/ TRIPOLI/ NATURAL

STONE FILTER'. Transferred directions to rear. Never seen on of these before? Good. NR £30-40+.

**92. WATER FILTER.** 18ins tall to top of domed lid, **off white** glaze. Large **black** pictorial transfer showing oasis scene, Arabs taking a drink of water. Chips to lid. NR £50-60+.



93.

**DOULTON ARTWARE FILTER.** 12.5ins tall to top of lid with inner section. All over raised decoration in **green, brown & blue** featuring cherubs etc 'DR BERNAYS PATENT DOULTON LAMBETH MANGANOUS CARBON FILTER' in raised lettering below rim. Bung hole near base. Doulton Lambeth imp'd mark & artists initials 'JB' to base. Very good. NR £200-250+. (AB)

**follow BBR Auctions on Facebook:**

Auction results/ News/ Updates regularly added to FB



*Three giant Virol variants*



**94. LARGE VIROL JAR.**

12ins tall, **off white** glaze, **black** transfer 'TRADE MARK/ VIROL/ A PREPARATION OF/ BONE-MARROW/ AN IDEAL FATFOOD/ FOR CHILDREN & INVALIDS'. Pictorial transferred image - hand holding dumb bells & around 'Quod Petish Hrc Est'. Some wheeled decoration. Very good. NR £30-40+. (GM)

**95. LARGE VIROL JAR.**

11.75ins tall, **off white** glaze, **black** transfer 'THE IDEAL VIROL FOOD/ (within the outer border surround at top) VIROL/ ... AN IDEAL FAT FOOD/ FOR CHILDREN/ & INVALIDS'. Strong **black** transfer. Very good. NR £30-40+. (GM)



**96. LARGE VIROL JAR.**

12ins tall, **off white** glaze **black** transfer 'VIROL/ A PREPARATION OF/ BONE-MARROW/ AN IDEAL FAT FOOD/ FOR CHILDREN/ & INVALIDS'. Glazed over in manufacture rear chip. Very good. NR £30-40+. (GM)



**Cream pots**



**97. SWISS COTTAGE DAIRY**

**CREAM POT.** 4ins tall, **blue** top, **white** glaze below, **black** transfer 'SWISS COTTAGE DAIRY/ J. BRANDON... FINCHLEY ROAD SOUTH HAMPSTEAD/ EST'D 1849' with 'DAIRY SUPPLY CO LTD LONDON' transferred to base. Handle & back restored. NR £60-80+.







**98. MANCHESTER CREAMERY CREAM JUG.** 3.75ins tall, white

glaze, black transfer 'MANCHESTER CREAMERY/ HAILWOODS/

PURE RICH CREAM/ BROUGHTON' to front, portraits of Queen Victoria both side. Very good. NR £80-120+.

**99. BROOKLAND DAIRY FARM CREAM POT.** 4ins tall, blue

top, white glaze below, black transfer

'BROOKLAND DAIRY FARM/ PURE FRESH CREAM/ STOKE NEWINGTON COMMON/ A.

STAPLETON & SONS'. Front neck flaws. Good. NR £80-120+.



**100. ILKLEY CREAMPOT.** 4ins tall,

off white glaze, black transfer 'RICH FRESH CREAM/ PROVINCIAL DAIRIES/ LIMITED/ ILKLEY'. Crisply struck cow & calf on rocks pictorial. Tiny shoulder flake. NR £30-40+.



**101. BROOKLANDS DAIRY CREAM POT.** 2.25ins, off

white glaze, black transfer

'BROOKLANDS DAIRY/ RICH CREAM/ PORTSMOUTH & SOUTHSEA'. Good. NR £40-60+.



**102. ST ANNES-ON-SEA CREAM POT.** 3ins tall, green top, lower

off white glaze, black transfer 'ST ANNES-ON-SEA DAIRY & CAFE/ PURE/ RICH CREAM H.P.'. Very good. NR £80-120+.



**103. BIRMINGHAM CREAM POT.** 3.75ins tall,

off white glaze, black transfer 'THE NORTH STAFFS DAIRY CO/ 100 BROAD ST/ BIRMINGHAM'. Unusually crisp/ strong black transfer. Very good. NR £40-60+.



## EMAILS BIDS

Email bids to: [sales@onlinebbr.com](mailto:sales@onlinebbr.com)  
add full name, address & credit card details,  
or fax: 01226361561. **YOU MUST ALSO POST BID SHEET - EVEN ARRIVING AFTER THE SALE**





**104. YORKSHIRE CREAM POT.** 3.75ins tall, **off white** glaze, very clear and well struck **blue** transfer 'PRESERVED CREAM/ FROM/ ESCRICK PARK DAIRY/ YORKSHIRE' crown with 'W' below to centre. Good. NR £60-80+.

**108. EXPRESS DAIRY CO CREAM POT.** 2.5ins tall, churn shape, **green** top, lower **off white** glaze, black transfer 'EXPRESS DAIRY CO LTD/ BY APPOINTMENT TO HIS MAJESTY/ THE KING'. Good. NR £30-40+.



**105. YORKSHIRE CREAM POT.** 6.25ins tall, **off white** glaze, **blue** transfer 'PRESERVED CREAM/ FROM/ ESCRICK PARK DAIRY/ YORKSHIRE' crown with 'W' below to centre. An exceptionally rare large size example. Good. NR £60-80+.



**109. MURGATROYDS CREAM POT.** 3.75ins tall, **off white** glaze, **black** transfer 'MURGATROYD'S BAILDON DAIRY FARM' cow pictured. Small rim hairline. Good. NR £30-40+.

**106. BUXTON DAIRY PAIR OF CREAM POTS.** 5.25ins tallest, **brown** glaze, **black** transfer 'BUXTON DAIRY/ DALE ROAD/ &/ SPRING GARDEN'. (2) Good. NR £40-60+.



**110. BIRMINGHAM CREAM POT.** 6.25ins tall, **brown** top, lower **off white** glaze, **black** transfer 'WATHES BROS/ DAIRYMEN/ 8 & 6 HOLLOWAY HEAD/ BIRMINGHAM'. Some nibbles to shoulders & rear base cracks but another exceedingly rare large size pot. NR £30-40+.



**107. HORNERS CYLINDRICAL CREAM POT.** 4.75ins tall, **white** glaze, **denim blue** coloured transfer, 'HORNERS DEVONSHIRE/ CREAM/ NO2/ ESTABLISHED 1846/ HORNERS CREAM



CHEESE CAN/ GENERALLY BE PROCURED WHERE/ THIS IS SOLD' to front. 12 lines of directions of use to rear. Very good. NR £60-80+.

**111. BRADFORD CREAM POT.** 4ins tall, **off white** glaze, rear handle, **black** transfer. 'THE CREME DE LA CREME/ SCOTTS/ SPECIAL/ CREAM BRADFORD'. Good. NR £30-40+.



## ABSENTEE BIDDING FORMS

Following a reneged bid BBR insists **ALL** Postal Bid sheets **MUST LIST FULL C.C. details** - or bids will **NOT BE ENTERED!**



## Pub jugs

**112. McNISH PUB JUG.** 6ins tall, white glaze body, brown/ sepia transfer 'DRINK/ MCNISH'S/ DOCTORS/ SPECIAL WHISKY/ THE MEDICAL WHISKY OF THE WORLD' both sides. Dunn Bennett & Co Manufacturers Burslem back stamp. Very good. NR £400-600+.

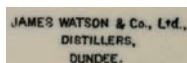


**113. WATSON'S PUB JUG.** 7ins tall, grey & white floral design body 'WATSON'S' to

front 'No 10' both sides. 'James Watson & Co Ltd Dundee' printed to base. A rarely seen 'classic'. Good. NR £150-200+.

(NL)

**114. WATSON'S PUB JUG.** 6.75ins tall, dark blue glaze base, blue & white above 'WATSON'S' to front 'BLUE BAND' both sides. 'James Watson & Co Ltd Distillers Dundee' printed to base. Even rarer than the last jug. Very good. NR £150-200+. (NL)



**115. PATTISONS PUB JUG.** 7.25ins tall, stoneware jug, dark blue top, lower off white glaze, black transfer 'PATTISONS/ LIMITED/ DISTILLERS LEITH/ ASK FOR PATTISON'S SCOTCH WHISKY'. Buchan p.m. Very good. NR £80-120+. (NL)



**116. OLD ORKNEY PUB JUG.** 4.5ins tall, white glaze, black transfer 'O.O. OLD ORKNEY REAL LIQUEUR/ SCOTCH WHISKY' both sides. J. Clifton Cottle London p.m. A particularly fine transfer on this scarce jug. Good. NR £60-80+.

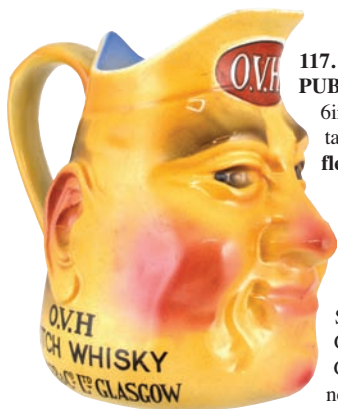


**TERMS & CONDITIONS** are printed to catalogue rear. All bids accepted on the understanding these have been read & accepted

## CONDITION help us to help you!

If you spot condition differences/ faults/ repairs we haven't please advise BBR staff. We always announce such amendments prior to a sale.





# 117. O.V.H. PUB JUG.

6ins tall, flesh



coloured face jug, black transfer 'O.V.H./ SCOTCH WHISKY WM GREER & CO LTD GLASGOW' both sides near base 'O.V.H.' to front at top white lettering on red.

'The Associated Potteries Co' p.m. Rarely seen with such complete/ intact colouring. Good. NR £60-80+.

# 120. STATE EXPRESS CIGARETTES PUB JUG. 4.75ins tall, red glaze, black & white transfer 'STATE EXPRESS/ 333/ CIGARETTES/ 20 FOR 1- PLAIN OR CORK/

ASK PLEASE FOR "THREE THREES". Thin green rim Reg'd no. 718308 transferred to base. Some slight glaze wear but a rare jug. NR £40-60+.



# 118. JOHN JAMESON PUB JUG. 4ins tall, yellow glaze, black transfer 'BY APPOINTMENT TO H.M. THE KING/ JOHN/ JAMESON/ WHISKY/ "JUST SAY JJ" both sides.

Causton London p.m. A striking stylish jug. Very good. NR £30-40+.



# 121. MANSFIELD ALES PUB JUG. 3.5ins tall, white glaze, black & red transfer

'MANSFIELD/ ALES "WORTH/ HUNTING/ FOR" huntsman pictured one side 'MANSFIELD BREWERY/ CO LTD/ GOLDEN DROP ALE/ BITTER BEER & MILD ALE' to the other. Slight flake to rim & top edge knock doesn't really detract from a great beer jug. NR £40-60+ (NL)



# 119. COATES & CO PUB JUG. 6.5ins tall, dark blue top, lower white glaze, black transfer

'COATES & COS/ ORIGINAL/ PLYMOUTH/ GIN' with monk pict. t.m. both sides.

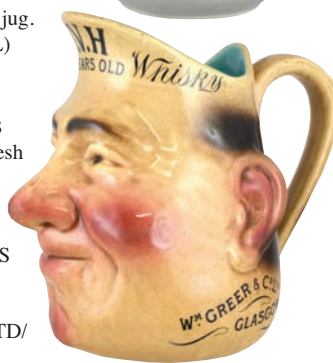
Green print Shelley p.m. Some glaze wear to handle. Great transfer both sides. NR £60-80+ (NL)



# 122. O.V.H. PUB JUG. 6ins tall, flesh coloured jug, black transfer

'GREERS O.V.H. 10 YEARS OLD WHISKY' below rim. 'WM GREER & CO LTD/ GLASGOW'

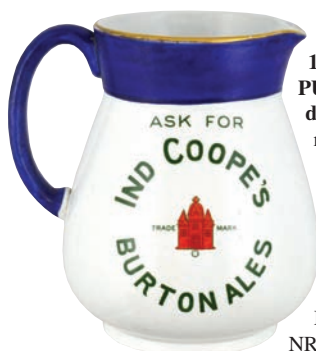
both sides near base. Sarreguemines imp'd base mark. About as good as they get! Very good. NR £60-80+.



## AFTER SALE PRICES REALISED

on: [www.sales@onlinebbr.com](mailto:sales@onlinebbr.com) or Facebook - BBR Auctions

or email BBR for a pdf: [sales@onlinebbr.com](mailto:sales@onlinebbr.com)



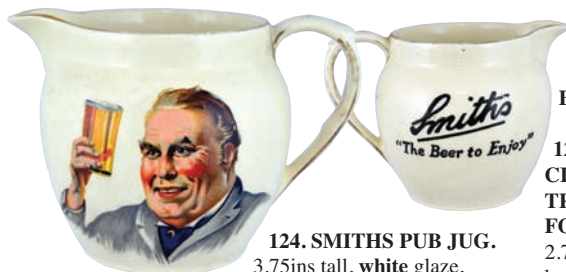
**123. IND COOPES PUB JUG.** 5.25ins tall, dark blue top (slightly matt) & handle, lower white glaze green & red transfer 'ASK FOR/ IND COOPES'/ BURTON ALES', red pict. Tower t.m. Mintons p.m. Good. NR £40-60+. (NL)



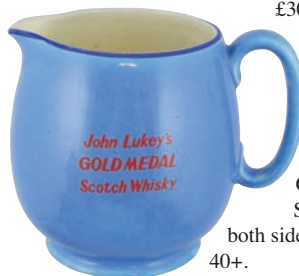
**127. SANDY MACDONALD PUB JUG.** 4.75ins tall, yellow glaze, red transfer 'SANDY MACDONALD/ (SANDY MAC)/ SPECIAL/ SCOTCH WHISKY' both sides. 'MACDONALD GREENLEES LTD/ ... LEITH SCOTLAND' to front. Wade Regicor p.m.

Quite possibly an early trial piece? Ex John Sneyd Collection. Very good. NR £30-40+.

#### Breweriana



**124. SMITHS PUB JUG.** 3.75ins tall, white glaze, multicoloured pict. transfer showing cheery red cheeked landlord holding up glass of beer one side, 'SMITH'S/ "THE BEER TO ENJOY"' to the other. Hairline to rear handle area. NR £30-40+. (NL)



**125. JOHN LUKEY'S PUB JUG.** 4.25ins tall, blue glaze, red transfer 'JOHN LUKEY'S/ GOLD MEDAL/ SCOTCH WHISKY' both sides. Very good. NR £30-40+.

**128. PUB NAMED CIRCULAR CERAMIC TRAY ON CIRCULAR FOOT.** 12ins diam, 2.75ins tall, chalet buildings, trees & figures 'NEPTUNE TAVERN' to rim with floral design to border. 'Geneve Opaque China' to base. Fabulous early & extremely rare breweriana piece. Very good. NR £60-80+.



**126. DANIEL CRAWFORDS PUB JUG.** White glaze, black transfer 'DANIEL/ CRAWFORD'S/ RED STAR/ SCOTCH WHISKY'. Carlton ware transferred p.m. to base. Very good. NR £30-40+.



**129. NEWTON ABBOT PUB NAMED TANKARD.** 4.25ins tall, blue & white willow pattern design 'DARTMOUTH/ INN/ NEWTON-ABBOT' in black lettering to front. Rim hairline S.T. P. co stamped to base. NR £40-60+.



#### SALE DAY FLOOR BIDDERS

- all items sold **AS SEEN**. Bidders must ensure lot/s meet personal condition standards.

**TERMS & CONDITIONS** are printed to catalogue rear. All bids accepted on the understanding these are read & accepted.



**130. IMPERIAL MEASURE JUG.** 6.25ins tall, **white** glaze, **black** transfer 'THE LORD LINE MEASURE'



twice below rim. 'QUART/

IMPERIAL MEASURE TO...

UNDERSIDE OF COLOURED LINE/ GOVT

STAMP'. 'VR' & crown in **red** to one side

'SANCTIONED/ BY THE/ STANDARDS

DEPARTMENT/ OF THE/ BOARD OF TRADE' to

the other side. Handle repair & some crazing.

Diamond reg. mark to base for 1881. NR £40-60+.



### 131. IMPERIAL

**MEASURE JUG.** 4.5ins tall,

**white** glaze, **black** transfer 'THE

LORD LINE MEASURE' twice below

rim. 'PINT/ IMPERIAL MEASURE/ TO THE

UNDER SIDE OF/ COLOURED LINE GOVT

STAMP' 'V93R/ 32' with crown in **red** to one side

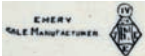
'SUBMITTED/ TO THE/ STANDARDS

DEPARTMENT OF THE/ BOARD OF TRADE' to

the other side. Emery Sole Manufacturer 1881 & reg

diamond to base. Possible restoration to pouring lip &

around base. NR £30-40+.



### 132. HALF PINT MEASURE

**TANKARD.** 3.75ins

tall, **white** glaze with

Mocha Ware style transfer **black on grey**.

Half pint with crown above below rim.

Patented 1882 J. Tams Longton Staffs &

lead insert to base. Some rivet repairs to rim

& handle. NR £30-40+.



### 133. BRADFORD TIN TRAY.

13.5ins square

'HEY'S GOLD

CUP/ ALE/

APPETIZING &

REFRESHING'

bottle & glass of

beer pictured.

'HEY'S/ GOLD

CUP ALE/

BREWED &

BOTTLED AT/ NORTHBROOK BREWERY/

BRADFORD' to label on bottle.

An ultra rare regional beer tray.

Very good. NR £30-40+.



### 134. COATES

**PLYMOUTH GIN**

**STONEWARE**

**MATCHSTRIKER.**

3.5ins tall, 5.75ins

diam at base, off

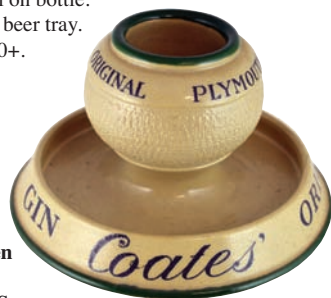
**white** glaze with **green**

rim to matchwell &

around base 'COATES

ORIGINAL PLYMOUTH GIN' in black lettering.

Hancock & Corfield p.m. Good. NR £30-40+. (GM)



### Whisky jugs

#### 135. THE GREYBEARD

**WHISKY JUG.** (Wg pg 117)

8.75ins tall, **tan** neck, lower

**off white** glaze, **black** transfer.

"THE GREYBEARD"/ OF/

THE ISLAY BLEND/

WHISKY' greyhound

pictorial registered t.m. with

'MACKIE & CO/

DISTILLERS/

GLASGOW &

ISLAY' Port

Dundas

Glasgow

imp'd p.m.

An

especially

rarer and

desirable

rarity. Very

good. NR

£500-600+.

(AB)



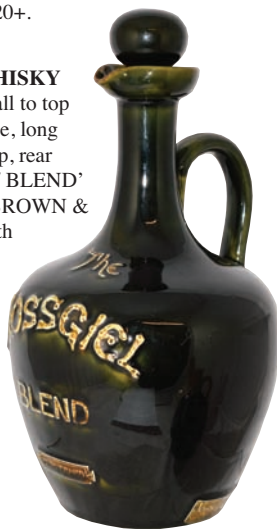




**136. MACKINLAY WHISKY JUG.** (WG pg 120)  
8.25ins tall, **tan** neck, rear handle.

Main body **mottled green** glaze with **tan** glaze medallion to front 'MACKINLAYS/ SCOTCH WHISKY' in raised lettering with raised thistles all over. Unusually dark blue in overall colouration. Royal Doulton imp'd p.m. to base. Very good. NR £80-120+.

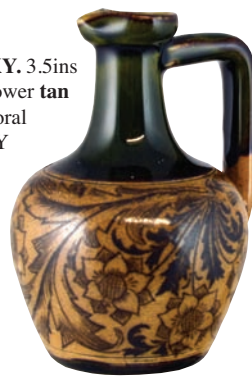
**137. THE MOSSGIEL WHISKY JUG.** (WG pg 31) 10.5ins tall to top of stopper. **Dark green** glaze, long neck with shaped pouring lip, rear handle. 'THE/ MOSSGIEL/ BLEND' in raised lettering. 'JOHN BROWN & CO' to rear Doulton Lambeth imp'd base mark. A minor flake to inner pouring lip. A long time since we offered one of these. NR. £200-250+. (GM)



**138. A. LOFFET WHISKY JUG.** 7ins tall, **brown** top, rear handle 'A. LOFFET & COS CHOICE OLD SCOTCH WHISKY/... 18 DUKE ST/ GROSVENOR SQ/ LONDON W'. Surrounded by ears of barley to front. 'A. LOFFET & CO/ BONDED STORES GLASGOW' to rear. Port Dundas p.m. A rarely seen jug. Unusually mint lip (*easily damaged*). Good. NR £80-120+.



**139. MINIATURE WHISKY.** 3.5ins tall, **dark green** glaze top, lower **tan** salt glaze with transferred floral design. 'MADE SPECIALLY FOR JAS SHOOLBRED & CO' & Doulton imp'd to base. Very good. NR £60-80+.



**140. JOHNNIE WALKER DECANTER.** 12.5ins tall to top of hat stopper. Coloured salt glaze figure of Johnnie

Walker wearing **red** jacket with **black** collar & **gold** buttons, cane in hand. Base **tan** salt glaze. Doulton Lambeth impressed mark. A previously unrecorded flask of some significance. Some damage to hat. NR £300-400+.



## POSTAL BIDDERS

... must satisfy themselves lot/ s meet their condition standards. For a more detailed inspection/ personal assessment please tel. BBR to speak with AB.

## follow BBR Auctions on Facebook

Auction results, News & Updates regularly added to FB - befriend us!



Advertising

**141. THOMAS WRAGG & CO SANITARY WARE TRADESMANS SAMPLES.** Brown glazed pipes, branches, sinks etc. Some impressed 'THOMAS WRAGG & CO SWADLINCOTE' & 'VEL-VERT'. A fine & varied spread. (15) Very good. £250-300+.

See also the 2 interesting examples in the Saturday auction.

**142. MATHER'S PATENT FLY PAPER PLATE.**

9ins diam, white glaze, black transfer 'MATHER'S PATENT/ FLY PAPER PLATE/ TO HOLD/ MATHER'S WASPS, ANTS, MOSQUITOES/ SOLD BY ALL CHEMISTS EVERYWHERE/ W. MATHER' address's below. Flies & wasps pictured to border. Base pictorially transferred with Mathers other products. Very good. £300-400+.



**143. NESTLE'S DISH.** 9 by 8.5ins, clear glass shell shape dish 'NESTLES/ SWISS MILK/ CHOCOLATE' recessed lettering underside. Extremely rare offering. Very good. NR £80-120+. (GM)



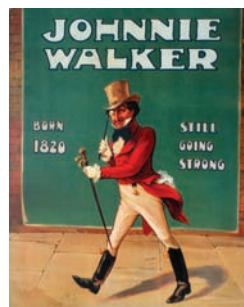
**144. JOHNNIE WALKER STAN UP CUT-OUT CARD FIGURAL ADVERT.**

30ins tall, 12.75ins wide at base. Multicoloured Johnnie Walker striding figure 'STILL GOING STRONG' to base. Good. NR £60-80+.



**145. JOHNNIE WALKER MULTICOLOURED SHOW CARD.**

22 by 18ins, 'JOHNNIE/ WALKER/ BORN 1820/ STILL GOING STRONG' with the familiar Johnnie Walker striding figure pictured. Good. NR £60-80+.



**SALE DAY FLOOR BIDDERS**

All items sold **AS SEEN**. Bidders must ensure lot/s meet personal condition standards.

**EITHER OR BIDS**

Absentee bidders on a tight budget BBR operates an 'either' 'or' option. Bid '£X' on one lot, '£Y' on another if unsuccessful. We can also carry amounts over. Make instructions simple & clear! If in doubt email AB: sales@onlinebbbr.com





**146. WORTHINGTON PUB MIRROR.** 36 by 24ins, wooden framed mirror 'WORTHINGTON/ IN BOTTLE' in **gold & black** lettering. Beer label facsimile above in **red, white & black**. Good. NR £80-100+.



**147. BASS PUB MIRROR.** 25 by 21ins, wooden framed (original) mirror 'BASS IN BOTTLE' on **white & black**

lettering with **red** triangle t.m. good. NR £80-100+.

**148. CHEMIST'S ENAMEL SIGN.** 36 by 24ins, 'ALFRED MORGAN M.P.S./ SHROPSHIRE ST/ CHEMIST/ FAMILY GROCER ALSO/ WINE AND SPIRIT MERCHANT' **white** lettering on **red**. Some outer edge chips & rust etc. NR £80-100+. (GM)



**149. SILKOLENE LUBRICANTS OIL CAN.** 14 by 14 by 9ins, 'SILKOLENE LUBRICANTS' & Concorde aeroplane pictured on **red**. Some normal wear & tear. NR £40-60+.



**150. SLINGSBY LADDERS.** Wooden library? ladder. 71.5ins long, 14ins wide 'SLINGSBY LADDERS' **gold** lettering on **red** with recessed plaque 'SLINGSBY LADDERS H.C. SLINGSBY BRADFORD GLASGOW & BELFAST' etc. Good. NR £30-40+.



**151. MICHELIN MAN.** 15.5ins tall, 22ins long. **White** rubberoid Michelin tyre man with 'MICHELIN' **black** lettering to **yellow** sash with original metal stand underneath. NR £40-60+.



**152. ROBIN CIGARETTES ENAMEL SIGN.** 60 by 12ins, 'SMOKE "ROBIN"/ THE POPULAR CIGARETTE' **red, yellow & blue** lettering on **dark blue** background. robin pictured to one side. Outer edge chips & rust etc. NR £150-200+. (AB)

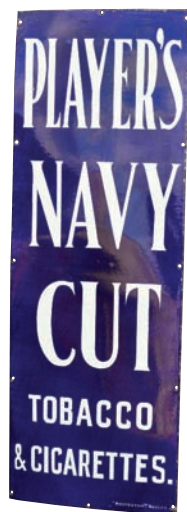






**153. SPRATT'S ENAMEL SIGN.** 30 by 20ins, SPRATT'S/ MEAT-FIBRINE/ DOG FOODS'. **Dark blue** lettering on

**white.** Outer edge chips & rust etc. NR £60-80+.



**154. PLAYERS ENAMEL SIGN.** 54 by 19ins, 'PLAYERS/ NAVY/ CUT/ TOBACCO/ & CIGARETTES' **white** lettering on **dark blue.** Outer edge rust, chips etc. NR £60-80+.



**155. SIMOND'S PUB MIRROR.** 30 by 18ins, wooden framed mirror 'SIMONDS/ READING/ PALE ALES/ AND STOUT/ HOME & EXPORT' **gold & black** recessed lettering with

**red** hop leaf t.m. Good. NR £80-100+. (JR)

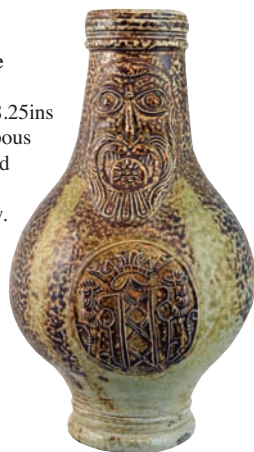
**156. CECIL ALDIN FRAMED MOTORING PRINT.** 22 by 15.75ins, **multicoloured** scene

showing lady & gent with bicycles, gent with motor cycle, couple in vintage car to rear outside village Inn 'CYCLES AND MOTOR CARS/ USE ONLY BRAMPTON CHAINS'

to poster on wall. Good. NR £60-80+.

**Salt glaze & early stoneware**

**157. BELLARMINE JUG.** 8.25ins tall, varying tiger glaze, bulbous bodied bellarmine jug, bearded face below neck, belly medallion, coat of arms below. Professional restoration - great looker. £250-300+.



**158. LARGE SALT GLAZE JUG.** 11ins to top of silver flip top lid. **Dark brown** upper, lower **tan** salt glaze lots of raised toppers, drinkers, smokers, trees, windmill, huntsman. Hounds & fox all around. Decorative strap handle to rear. Good. NR £120-150+. (DD)



**159. MORTLAKE LONDON SALT GLAZE JUG.** 8ins tall, handle to rear, **dark brown** upper section **tan** salt glaze below, raised punch party panel to front, figures either side. Huntsmen on horseback, hounds etc. all around, ribbed below rim. Hairline from base upwards & inside lip chip. NR £80-120+. (DD)





**160. KISHERE LONDON  
SALT GLAZE JUG.**

6.25ins tall, hallmarked silver rim,  
ribbed below. **Brown & tan** salt

glaze raised area to front with toper huntsman on horseback  
hounds, trees, stag etc. All around imp'd Kishere to base.  
C.1810 - 1843. Good. NR £80-100+. (DD)



**163. LONDON  
FLAGON.** 9.25ins  
tall, **brown** top, lower  
**tan** salt glaze, round  
shouldered flagon  
imp'd 'W. STEVENS/  
WINE & SPIRIT  
MERCHANT/ 78 &  
80 BISHOPSGATE  
WITHIN' with  
'FULHAM STONE  
POTTERY GLAZED INSIDE'  
imp'd below. Lip chips. NR £80-  
100+. (DD)



**161. LARGE FLAGON.**

12ins tall, **dark brown &  
cream** shiny glaze, handle  
to rear. Raised figures all  
around. Hairlines to lip. An  
extraordinary item.

*Probably William Knott  
Alncroft Burslem  
Potteries Staffordshire.*  
NR £80-120+. (DD)



**164. PUB NAMED SPIRIT BARREL.**

6.75ins tall,  
**tan** salt glaze imp'd  
'W.C. GEE & CO/  
BAKER & BASKET/  
WORSHIP ST' 'S  
GREEN' in raised  
lettering to lozenge at  
top. Very good. NR  
£150-180+. (DD)



**162. PUB NAMED  
FLAGON.**

10ins tall, **brown  
top** lower **tan** salt glaze  
round shouldered flagon  
imp'd 'W. BROCK/ WHITE  
HART INN BARNES'  
'KISHERE POTTERY  
MORTLAKE SURRY' imp'd  
below. Good. NR £120-150+.  
(DD)



**165. BOOK FLASK.** 5ins tall,  
**tan** salt glaze flask formed as a  
book, raised thistle within  
diamond to one side. Very good.  
NR £60-80+. (DD)



**166. BOOK FLASK.** 5.25ins tall,  
**tan** salt glaze flask in form of a book  
with raised & incised  
decoration both sides.  
Very good. NR £60-80+.  
(DD)







**167. PURSE FLASK.** 6.25ins tall, **tan** salt glaze flask in shape of a clasped purse, with raised detail. Very good. NR £60-80+. (DD)



**168. LONDON SPIRIT FLASK.** 8ins tall, **brown** top lower **tan** salt glaze flattened shape flask imp'd to shoulder 'BARKER & SON/ 49 BISHOPSGATE STREET WITHOUT' imp'd 'Fulham Stone Pottery' to base. Very good. NR £80-120+. (DD)



salt glaze flattened round shouldered flask imp'd to front 'GILLBANKS/ WINE & SPIRIT DEPOT/ SEYMOUR PLACE'. Lip chip. NR £80-100+. (DD)



**170. LORD NELSON JUG.** 10ins tall, hat **brown**, lower **off white** glaze formed as a bust of Lord Nelson, rear handle. Good. NR £50-60+. (GM)



**169. SPIRIT FLASK.** 8.5ins tall, varying **tan**

**171. SMALL SPIRIT BARREL.** 8ins tall, **dark brown** glaze. Raised coat of arms to front. Scroll above. reclining lions either side. Bung hole near base. Something quite different to the norm' barrels seen? Very good. NR £50-60+.



**172. SMALL SALT GLAZE COOKING VESSEL.** 3ins tall, **brown** salt glaze pot with handle to side, pouring lip to rim.

Fabulous and rare little utilitarian piece Very good. NR £20-30+.



**Reforms**

**173. PUB NAMED REFORM FLASK.** 9.75ins tall, **tan** salt glaze, half figural of Robert Peel holding scroll 'REFORM/ AND/ REPEAL' with 'LLANGE/ 1 HIGH ST/ SHADWELL' imp'd to rear. Very good. NR £250-350+. (DD)







**174. MR & MRS CAUDLE FLASK.**

7ins tall, top **brown**, lower **tan** salt glaze 'MR & MRS CAUDLE' featured to front 'MISS PRETYMAN' to rear. Base imp'd 'Doulton & Watts Lambeth Pottery London'. Good. NR £80-100+. (DD)



**175. FISH FLASK.** 14ins long, varying **tan** salt glaze flask in shape of a fish (probably a carp) scale & fin details, cork to mouth. A fabulous and rare large size fish flask in a most unusual colour. Chip to tail fin.

NR £150-200+. (DD)



**176. DOULTON PISTOL FLASK.** 10ins long, **tan** salt glaze

flask in shape of flintlock pistol with 'DOULTON & WATTS/ LAMBETH POTTERY LONDON' imp'd mark. Very good. NR £80-100+. (DD)



**177. STEPHEN GREEN PISTOL**

**FLASK.** 8.5ins long, **brown** salt glaze flask in shape of flintlock pistol imp'd 'STEPHEN GREEN IMPERIAL POTTERIES LAMBETH' to top. Repaired flintlock. NR £60-80+. (DD)



**178. DATED PISTOL FLASK.** 11.25ins long, **shiny brown & cream** glaze flask in shape of a flintlock pistol. Imp'd 'WILLIAM COWIE 1882' to top of barrel. Repaired flintlock. NR £60-80+. (DD)



*Following are five contemporary political flasks from a set modelled by Leslie Harradine, c. 1905.*

**179. ARTHUR BALFOUR POLITICIAN FLASK.**

7.25ins tall, **brown** top, lower **tan** salt glaze flask of Arthur Balfour (Con) with silver metal cap. Doulton Lambeth imp'd base mark. Very good. NR £100-120+. (DD)



**TERMS & CONDITIONS** are printed to catalogue rear. All bids accepted on the understanding these have been read & accepted



**180. JOHN BURNS POLITICIAN FLASK.** 7.25ins tall, **dark brown** top lower **tan** salt glaze, flask of John Burns (Lab) Doulton Lambeth imp'd base mark. John Burns transferred to rear. Very good. NR £100-120+. (DD)



**181. DAVID LLOYD GEORGE POLITICIAN FLASK.** 7.25ins tall, **brown** top, lower **tan** salt glaze flask of David Lloyd George (Lib) Doulton Lambeth imp'd base mark. Very good. NR £100-120+. (DD)



**182. RICHARD HALDANE POLITICIAN FLASK.** 7.25ins tall, **brown** top, lower **tan** salt glaze flask of Richard Haldane (Lib). Doulton Lambeth imp'd base mark. Very good. NR £100-120+.



**183. HERBERT ASQUITH POLITICIAN FLASK.** 7.25ins tall, **brown** top, lower **tan** salt glaze flask of Herbery Asquith (Lib). Doulton Lambeth imp'd base mark. Very good. NR £100-120+. (DD)



**184. SHREWSBURY SLAB SEAL PORTER.** 9.75ins tall, **grey/ green** glaze, pie crust slab seal reads, 'GUINNESS, SON & CO/ DOUBLE STOUT/ W.I. BARCLAY/ SHREWSBURY/ SOLE AGENT'. Very good. NR £150-250+. (DN)



**185. SLAB SEAL FLASK.** 5.5.ins tall, small lozenge shape flask, **grey/ green** glaze. Seal reads 'J.A. CHRISTIAN'. Very good. NR £150-200+. (DN)

**186. YORK SLAB SEAL FLASK.** 5.75ins tall, **grey/ green** glaze, ribbed sloping shouldered flask with shaped slab seal 'C SELLER/ 5 FOSS GATE/ YORK'. Very good. NR £200-300+. (DN)





Inks



# 187. TEAKETTLE INK.

2ins tall, **pale amber** glass tapering octagonal shape with upturned spout. Very good. NR £150-170+. (NL)



# 188. TEAKETTLE INK. 2.25ins

tall, **bright green** glass, waisted octagonal shape, upturned spout with brass fitting & lift up cap. Very good. NR £170-220+. (NL)



# 189. TEAKETTLE INK. 3ins tall,

six sided ceramic tea kettle ink, **burnt red** with **gold** decoration on **white**, featuring birds & floral design. Frog on top, complete with cap (adorned by an insect!). Very good. NR £250-300+. (AB)



# 190. TEAKETTLE

**INK. 2.75ins** tall, opaque **pale green** glass, ribbed pear shape with upturned spout. Very good. NR £120-150+. (MH)



# 191. TEAKETTLE INK.

3ins tall, opaque **pale green** glass, larger version as previous lot. Very good. NR £120-150+. (AB)



# 192. TEAKETTLE

**INK. 2.25ins** tall, **dark/deep aqua** glass tapering six sided shape with upturned spout with annealed lip. Plenty of seed bubbles. Very good. NR £120-150+. (NL)



# 193. TEAKETTLE

**INK. 2ins** tall, **cobalt blue** glass, tapering octagonal shape, upturned spout with sheared lip. An early example. Very good. NR £150-200+. (MH)



# 194. SALT GLAZE

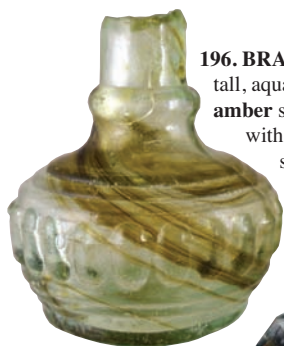
**INKWELL. 2ins** tall, 3ins diam. **Brown** top, lower **tan** varying salt glaze, with raised grapes & vines all around, central inkwell 3 quill holes to top. Good. NR £60-80+. (DD)



**195. TRUSCOT INK. 2.75ins** tall, aqua glass faceted base & shoulder, protruding ring to neck with sheared lip. Embossed 'TRUSCOT' to middle section. Slight dullness, lip chip to back. NR £30-40+.







**196. BRACELET INK.** 2.75ins tall, aqua glass with glorious **amber** swirls. Circular shape with protrusions all around, sheared lip. Neck fracture. NR £60-80+.



**197. BOAT SHAPE INK.** 2.25ins tall, very **dark green** glass with **red amber** hues. Sheared lip, 2 pen rests. Very good. NR £60-80+.



**198. WILLIAMS INK.** 3ins tall, large bell shape ink in **pale lilac** glass (*sun coloured?*) embossed in script lettering 'WILLIAMS' with sheared lip. Very good. NR £40-60+.



**199. CIRCULAR INK.** 2.25ins tall, aqua glass, early looking ink with rolled lip. Looks freeblown? Good. NR £30-40+.



**200. AMBER INK.** 2.5ins tall, **pale amber** glass square shape, 2 pen rests to top, neck with annealed lip. Very good. NR £30-40+.

**201. STOCKTON ON TEES INK.** 2.75ins tall, aqua glass square shape with round shoulders embossed 'J.F. SMITH/ & CO/ BLACK INK/ STOCKTON/ ON TEES' with sheared lip. Very good. NR £40-60+.



**202. WOLVERHAMPTON INK BOTTLE.** 2ins tall, aqua glass square ink, sheared lip embossed 'MORRIS/ &/ GRIFFIN/ XLCR/ W'HMP'. Very good. NR £20-30+.



**203. STEPHENS INK CERAMIC DOOR FINGER PLATE.** 7.5ins long, 2.5ins wide, white glaze 'STEPHENS' white lettering on **blue & black** inks splash. Very rare. Slight staining, surface marks etc. NR £80-100+.

### Figurals

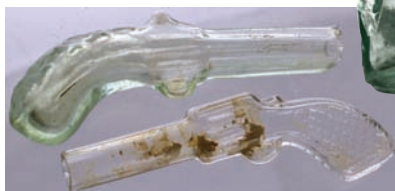
**204. PIPE FIGURAL.** 4.75ins long, clear glass figural in shape of a tobacco pipe. Never seen one of these before? Very good. NR £20-30+.



**205. POLICEMAN FIGURAL.** 4ins tall, aqua glass figural in form of a policeman. Excellent modelling. Very good. NR £20-30+.



**206. PAIR OF PISTOL FIGURALS.** One 4.25ins long in aqua glass (*not seen this before?*) plus well detailed clear glass example 4ins long. Unusually detailed butt? (2) Good. NR £20-30+.



**Black  
glass**



**207. SHAFT & GLOBE WINE BOTTLE.**  
8.25ins tall,  
**dark olive**

green glass,  
c.1660-1670

bulbous body with long tapering neck. Applied string ring & base pontil. Label stuck on bottle reads '1956 34/33 King Street/ glass wine bottle, c.1665' possibly where it was found? Some restoration to neck, lip area etc. NR £300-400+.

**208. SEALED ONION WINE BOTTLE.** 6ins tall, **dark olive green** glass, applied string rim, pontilled base.

Indistinct applied seal with amorial coat of arms surmounted by Viscounts Coronet c.1690. All over surface patination. Some restoration. NR £300-400+.



**209. ONION WINE BOTTLE.** 6.75ins tall, **dark olive green** glass, c.1690-1700. Sea washed?

With encrustations etc. With some contents. NR £150-200+.



**210. DATED SEALED WINE BOTTLE.**

8.75ins tall, **dark olive green** glass, squat cylinder. Applied collar lip, seal reads 'CHAS/ GUY/ 1774' (see *Burton Vol 1 Pg 754 & 783*). In superb condition. Very good. NR £300-400+.



**211. DATED SEALED WINE BOTTLE.** 10ins tall, **dark olive green** glass, squat cylinder.

Applied collar lip, base pontil. Seal reads 'TD 1786'. (See *Burton Vol 2 Pg 786*). Very good. NR £300-400+.



**212. DATED SEALED WINE BOTTLE.**

10ins tall, **dark olive green** glass, dumpy cylinder, applied collar lip. Seal reads 'I.E. 1771'. A most unusual wide bodied large size squat cylinder. Very good. NR £300-400+.





**213. SEALED WINE BOTTLE.** 12ins tall, dark olive glass, large squat cylinder

applied collar lip. Seal reads 'J MASON' (see *Burton Vol 3 Pg 1198*). Very good. NR £270-320+.



**214. SEALED CYLINDER WINE BOTTLE.** 11.25ins tall, dark olive green glass, applied collar lip with remnants of wax. Graphite pontil. Base seal reads 'OX. R. LEN'. Very good. NR £80-120+.



**215. SEALED CYLINDER WINE BOTTLE.** 10ins tall, dark olive green glass, applied collar lip. Base pontil, seal reads 'HADD MASON LODGE'. Very good. NR £80-120+.



**216. SEALED CYLINDER WINE BOTTLE.** 11ins tall, dark olive green glass, applied collar lip, 3 piece mould. Low body seal reads 'CHRISTOPHER & CO PALL MALL LONDON'. (See *Burton Vol 3 Pg 1076*). Very good. NR £80-120+.



**217. SEALED CYLINDER WINE BOTTLE.** 9.75ins tall, dark olive green glass, flared lip. Applied seal with coat of arms.

Very good. NR £60-80+.



**218. GERMAN BITTERS? BOTTLE.**

7ins tall, dark olive green glass, rectangular shape with sloping shoulders with horizontal & vertical indentations. Embossed to sides 'ALBERT ECKHERT EDELRAUTE'. An early crude & rare item. Very good. NR £40-60+.

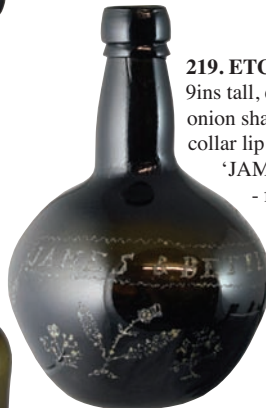


**220. NAILSEA (?) FLASK.** 6.75ins tall, dark olive green glass with white enamelled flecks. Flattened pear shape with applied handle, neck with flared lip. Pontil base. Suoer crude. Very good. NR £80-120+.



**219. ETCHED WINE BOTTLE.**

9ins tall, dark olive green glass onion shape, neck with applied collar lip, base pontil. Etched 'JAMES & BETTEY SMITH' - figure of man, spade in hand, dog by his side, to rear. Very good. NR £60-80+.



**221. SNUFF JAR/ BOTTLE.** 4.75ins tall, mid olive green glass rectangular shape with wide neck & bevelled corners. Pontil scar to base. Very good. NR £40-60+.





## Pharmacy



### 222. LARGE DISPLAY SHOP

**ROUND.** 14ins tall to top of stopper. **Very deep, dark purple** glass, rolled lip, ground base pontil. 'SP: VINI.R.' **black** lettering on **gold** painted label. A truly fabulously coloured item. Very good. NR £80-120+.



### 223. SHOP DISPLAY

**ROUND.** 12.75ins tall to top of tin cap, **deep purple** glass. rolled lip, pontil base 'POTAS" TART.' **black** lettering on **gold** painted label. Another fabulous coloured item. Very good. NR £60-80+.

### 224. PAIR OF CERAMIC SHOP

**ROUNDS.** Tallest 9.5ins tall to top of domed lid. **Pink & white** glass, **black & gold** painted label 'UNG. GALLAE'. Inner lining jar (usually absent). Plus smaller unlabelled example. Both with base flakes still scarce. (2) NR £40-60+.



### 225. 4 SHOP ROUNDS.

Tallest 10ins to top of stopper 'POT BICARB'. All **Cobalt blue** glass, 2 with ground pontils. All labelled, 2 painted, 1 recessed under glass, 1 printed label. (4) Good. NR £40-60+.



### 226. 3 SHOP ROUNDS.

Tallest 10.75ins tall to top of stopper. **Opaque blue** glass with painted labels, **black** lettering on **gold**. Pontil bases. Delightful & rare colouring. (3) One damaged. NR £80-120+.

### 227. GROUP OF SHOP ROUNDS.

Tallest 9.5ins tall to top of stopper. **Green** glass, 2 with knob stoppers, others chisel type. All recessed labels under glass - 5 most unusually bearing 'Poison'. Red, black & gold, one cracked otherwise all very good. (8) NR £80-120+.



### follow BBR Auctions on Facebook

Auction results, News & Updates  
regularly added to FB - befriend us!



### Eyebaths

**228. FREEBLOWN EYEBATH.** 2.5ins tall, **apple green** glass. Very rare double reservoir type, on circular foot. Very good. NR £80-120+.

**229. LARGE FREEBLOWN EYEBATH.** 3ins tall, **cobalt blue** glass, pedestal type, large bowl with turned in rim. On a ground pontil base. Very good. NR £30-40+.

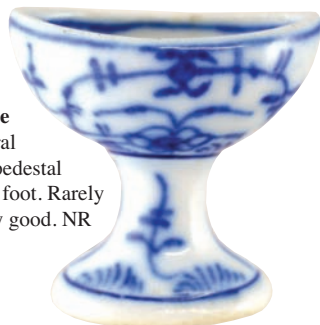


**230. PAIR OF CERAMIC EYEBATHS.** White glazed unstemmed types. One 1.5ins tall, **green** transfer 'SECURITE' the other 1.25ins tall, transferred 'COLUVAL/ LABORATOIRE/ PHYGIENE/ LA GARRENE'. (2) Very good. NR £30-40+.



**231. LARGE FREEBLOWN EYEBATH.** 3ins tall, **deep dark green** glass, pedestal type, large 'chunky' bowl with ground rim. On circular foot with pontil scar. Very good. NR £30-40+.

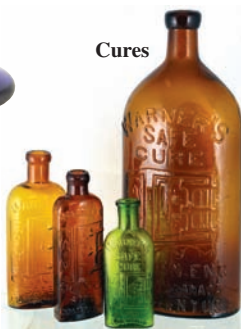
**232. CERAMIC EYEBATH.** 2ins tall, **blue & white** floral decoration. pedestal type on oval foot. Rarely offered. Very good. NR £80-120+.



**233. TRIO OF EYEBATHS.** Blue, green & clear glass. Pedestal types, bases embossed 'PAT AUG 14 1917 JOHN BULL TRADE MARK REG US PATENT OFF'. (3) Very good. NR £30-40+.



### Cures



**234. MINIATURE WARNERS SAFE CURE BOTTLE.** 4.5ins tall, **mid green** glass embossed 'WARNERS/ "SAFE"/ CURE LONDON' with the familiar Safe motif t.m. Some light traces of dullness otherwise very good. NR £700-800+. (NL)







**235. WARNERS SAFE COMPOUND BOTTLE.** 5.25ins tall, **deep amber** glass, embossed 'WARNERS/ "SAFE" COMPOUND' with the familiar Safe motif t.m. Flattened sides version. Very good. NR £120-150+. (KB)



**236. WARNERS SAFE COMPOUND BOTTLE.** 5.75ins tall, **golden amber** glass, embossed 'WARNERS/ "SAFE" COMPOUND' with the familiar Safe motif t.m. Some lovely large bubbles in the glass. Very good. NR £120-150+. (KB)



**237. WARNERS 3 CITIES SAFE CURE BOTTLE.** 11ins tall, **deep amber** glass embossed 'WARNERS/ SAFE CURE/ LONDON, ENG/ TORONTO CANADA/ ROCHESTER NY U.S.A.' with the familiar Safe motif t.m. Very good. NR £300-400+. (KB)

### ABSENTEE BIDDING FORMS

Following a renaged bid BBR insists **ALL** Postal Bid sheets **MUST LIST FULL C.C. details** - or bids **NOT ENTERED!**



**238. HANDYSIDES DRINK PREPARATION BOTTLE.** 10.5ins tall, **golden amber** glass square section, neck with double collar lip, embossed vertically 'DRINK

PREPARATION PREPARED BY/ G HANDYSIDE'. Some absolutely fabulous colour swirls in the body. Very good. NR £150-200+. (AB)



**239. HANDYSIDES CONSUMPTION CURE BOTTLE.** 7.5ins tall, **light amber** glass sauce bottle shape

embossed vertically 'HANDYSIDE'S/ CONSUMPTION CURE'. Rarely seen light colour. Very good. NR £60-80+. (AB)



**240. HANDYSIDES CONSUMPTION CURE BOTTLE.** 7.5ins tall, **dark green** glass sauce bottle shape. Embossed vertically 'HANDYSIDE'S/ CONSUMPTION CURE'. Very good. NR £60-80+. (AB)



**241. HANDYSIDES BLOOD FOOD BOTTLE.** 10ins tall, dark olive green glass, flattened rectangular shape with round shoulders embossed 'BLOOD FOOD PREPARED BY/ G. HANDYSIDE'. Very good. NR £30-40+. (AB)

**242. HANDYSIDES BLOOD FOOD BOTTLE.** 7.25ins tall, bright green glass, flattened rectangular shape, round shoulders embossed 'BLOOD FOOD

PREPARED/ BY/ G. HANDYSIDE'. Very rare colour - plus an unusual tall lip. Tiny nick flake to lip rear. Very good. NR £60-80+. (AB)



**243. HANDYSIDES BLOOD FOOD BOTTLE.** 6.5ins tall, dark olive green glass, flattened rectangular shape with round shoulders, embossed 'BLOOD FOOD/ PREPARED BY/ HANDYSIDE'. Very good. NR £30-40+ (AB)



**244. HANDYSIDES DIGESTIVE SYRUP BOTTLE.** 6.5ins tall, bright green glass, rectangular shape with bevelled corners embossed 'EASILY DIGESTED/ SYRUP PREPARED BY/ G. HANDYSIDE'. (Note misspelling of 'easily!'). Minor scratch to front panel. Very good. NR £80-100+ (AB)



**245. SAMPLE TUSSAND COUGH CURE BOTTLE.** 2.25ins tall, aqua glass rectangular sample bottle embossed 'TUSSAND/ CURES/ COUGHS' to one side 'SAMPLE/ C. HOOD & CO/ LOWELL MASS' to the other. Very good. NR £20-30+.



**246. HANDYSIDES RHEUMATIC CURE BOTTLE.** 5.25ins tall, clear glass cylinder. Embossed 'HANDYSIDES/ RHEUMATIC CURE' & 'HANDYSIDES CORN SALVE/ PREPARED BY/ G. HANDYSIDE'. Small clear glass cylinder 3ins tall. (2) Good. NR £20-30+.

**247. PLANTATION BITTERS BOTTLE.** 10.25ins tall, deep amber glass, log cabin shape with stepped roof. Embossed 'DRAKES/ 1860/ PLANTATION/ X BITTERS' to front. 'PATENTED/ 1862' to rear. Very good. NR £30-40+.



**248. ROSES LIME JUICE BOTTLE.** 12ins tall, dark brown glass, cylindrical bottle, double collar lip with embossed fruit & vines, leaves etc. Embossed 'L. ROSE & CO' with space for label below. Very good. NR £30-40+. (GM)





## Poisons



### 249. POISON CHEMIST

**ROUND.** (DP pg 96)  
9.75ins tall to top of chisel stopper, **cobalt blue** glass with horizontal ribs 'TINCT./ VERATRI/ VIRIDIS' in **white** enamelled lettering 'POISON' near base in **red**. An impressive large size. Very good. NR £80-120+.



### 250. POISON CHEMIST ROUND (DP pg 96)

5.5ins tall to top of chisel stopper, wide neck version. Cobalt blue glass with horizontal ribs 'PULV./ IPECAC. CO' in **white** enamelled lettering. 'POISON' in **red** near base. Side of lip (R) chip. NR £60-80+.



### 251. CYLINDRICAL

**POISON BOTTLE.** 8.25ins tall, **green** glass cylinder with vertical ribs embossed 'NOT TO BE TAKEN' vertically to front 'POISON' near base at rear. Scarce large size. Very good. NR £30-40+.



### 252. ETON STAR POISON

**BOTTLE.** (DP pg 58) 3.5ins tall, **amber** glass star section with flatback, embossed 'POISON' & 'NOT TO BE TAKEN' vertically between horizontal ribs. Very good. NR £150-200+. (NL)



### 253. CYLINDER POISON BOTTLE.

7ins tall, **cobalt blue** glass, tall slim cylindrical bottle with 7 lines of vertical dots. Beautiful & unusual **blue**. Very good. NR £30-40+.



### 254. POISON

**BOTTLE.** 5ins tall, aqua glass flat backed hexagonal with sheared lip embossed 'NOT TO BE TAKEN' vertically, ribs either side. Very good. NR £30-40+. (NL)



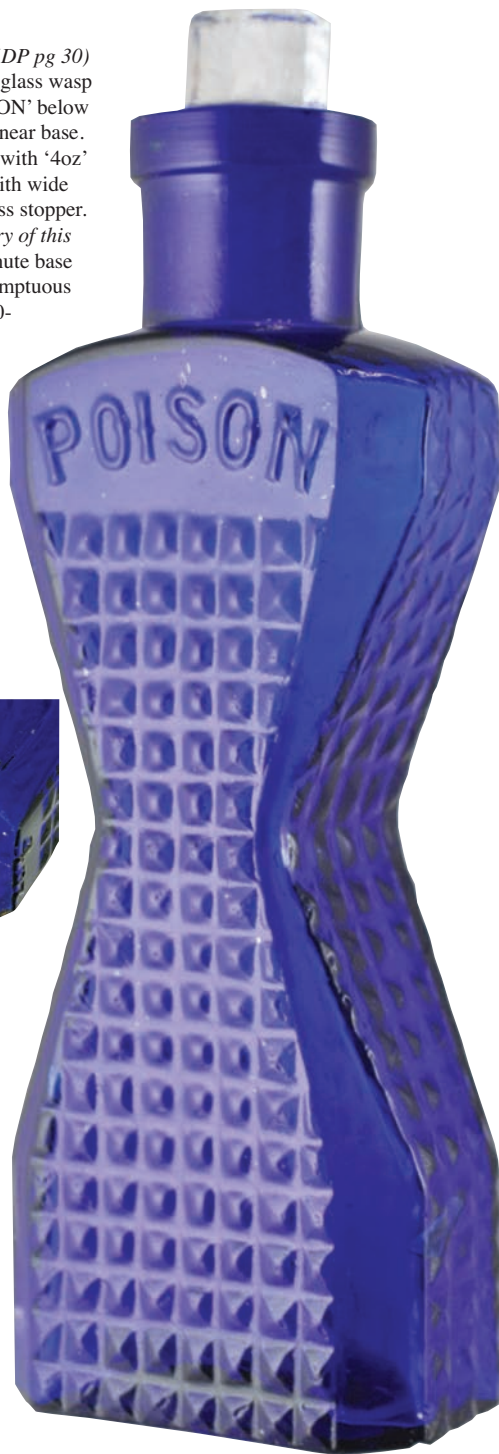
### 255. LABELLED POISON

**BOTTLE.** 3.5ins tall to top of stopper, cut-off hexagonal in **green** glass embossed 'NOT TO BE TAKEN' paper label 'POISON/ SANDRINGHAM/ NO 1 EYE DROPS' with contents. Base embossed '1/2 oz'. Good. NR £20-30+. (NL)



**256. ECLIPSE WASP WAIST POISON BOTTLE.** (DP pg 30)  
 6.25ins tall to top of clear glass stopper. Cobalt blue glass wasp  
 waist bottle studded to front & sides, embossed 'POISON' below  
 neck to front 'POISON' to rear with 'RD NO 460944' near base.  
 Base embossed 'THE ECLIPSE/ POISON BOTTLE', with '4oz'  
 to one side. This now makes two examples recorded with wide  
 necks, but this is the only one with original ground glass stopper.

*Full story of the 'survival' & discovery of this  
 bottle will appear in BBR 143. Minute base  
 flake does not detract from this sumptuous  
 and important offering. NR £5,000-  
 6,000+.*





# BBR Unreserved Auction Saturday 25<sup>th</sup> April

**Blg 21** doors open 9<sup>am</sup>, sale starts @ 11<sup>am</sup> **A very big sale!**

**EVERYTHING** sold as seen sale day. Items collected after payment - anytime during or after sale (calculation sheets available). Absentee bids accepted, additional accurate condition reports prior are very problematic due to storage - we will always do our best.

Provenance initials in brackets: KB = Kevin Boyle, GM = Garth Morrison, Ian McKenzie  
JR = John Rowe. CM = Chris Mortimer. DD = Dudley Davidson, AB = Alan Blakeman.



1. Onion wine bottle, 7ins tall, all over body patination

2. Toilet roll holder, wood & metal marked 'Gordon Toilet Fixture'. Good (GM)

3. 3 pewter measures, 4ins tallest. Good

4. Cobalt blue glass 'Minimax' fire extinguisher. Good

5. Firths Darlington g.b. Blue transfer

6. Aqua glass cottage ink, embossed 'Chandler & Co' to base

7. 'Mabel Lucie Atwell' laminated memory board

8. Kettering soda syphon pink glass, acid etched 'W.C. Cooke Kettering'. Good

9. Sml spice cabinet 13 by 10 by 8ins, wooden cabinet, 2 drawers to base with 6 metal containers to take spices. Good

10. 2 Manchester codd bottles, dark & light aqua 'John Bucklet & Spencer Connor'(Connors Patent). Good

11. Bromsgrove soda syphon, cobalt blue glass acid etched 'Spencer Bromsgrove'

12. Imperial trumpet imp. 'Boosey & Hawkes London' in fitted leather case with Stytratone mutes, Rudy Muck mouth piece & cleaning equipment

13. Gramophone player in wooden cabinet 'Commonwealth' makers mark

14. Various wooden planes (8) + Rolls razor etc.

15. Grp 12 night lights, green & clear glass 'Clarke's' example & stands

16. Lrg mix grp of ephemera: adverts, bill heads, booklets, magazines etc.

17. Ashrays grp: Dewars, Hine Cognac, Whitehorse, D.C.L., Schweppes, Crawfords etc.

18. 3 pub jugs: VAT 69, Haigs, Martell + tankard & ice box

19. Mix grp vintage boxed soaps: Charlie Brown, Lucy, Yardley Lavender, Compact, Lux Flakes etc.

20. Tins grp: Jacobs Biscuits, C.W.S., Ringtons Tea, Draughts board tin, Nurse Grants Digestive Mints etc.

21. Mix pottery grp: tobacco jar, teapot, ashtray, inkstands, plates etc.

22. Grp of invalid & baby feeders

23. Grp motoring books, booklets, road maps etc.

24. Tins grp: Thornes, Needlers, Peek Frean, Blue Bird Toffee etc. (19)

25. Brown salt glazed dog bowl





26. Black Mantel clock with key & pendulum  
'Anstonia Clock Co N.Y. in WO
27. Spelter figure 'Marley Horse Tamer'
28. Lrg stoneware jug, tan top, lower off white glaze.  
Bristol p.m.
29. Lrg salt glaze jug, brown top, lower tan salt  
glaze. Lift up silver c.1850! Ornate lid features a  
boot finial (DD)
30. Aubron framed advert 'Aubron/ Three/  
Crowns/ French Brandy/ Aubron & Co' bottle  
pictured. Good.
31. 2 washboards wood & glass example + zinc &  
wood example 'The Albert No5' + 2 mirrors (4)
32. Pr framed paintings, tree & landscape scenes
33. Pr mirrors one featuring 'Rolls Royce' + Moët &  
Chandon Art Nouveau example
34. 8 copies of 'The Great World War A History'
35. 3 chemists rounds, 4 green hexagonal poisons +  
Portmerion mug + 4 glass nasal douches
36. Postcard album + stamp album, 3 booklets &  
Calendar of cooking etc.
37. Tray of Royal commemorative memorabilia:  
mugs, tray, tin & Bells decanter etc.
38. Box of pot lid bases
39. 2 framed adverts: 'Morris Evans Household  
Ointment' + 'Daniel Crawfords Red Star Scotch  
Whisky'
40. 'Lister; coffee grinder (?) (GM)
41. Brown glazed teapot & coffee pot

42. 3 milk bottles  
from 'Weldon  
Ashes Farm  
Wentworth'
43. 6 labelled Kings Princes Ales etc + sml wine bottle  
'Rednutt' with contents (7)
44. Double reservoir tea kettle ink, aqua glass  
(cracked) sheared lip, displays well. Extremely rare
45. 2 brown swirled glass inks, square ribbed &  
round
46. 4 octagonal inks, cobalt blue, mid blue & green  
glass
47. 4 square ribbed inks, pale blue & light amber + 2  
aqua glass
48. 2 'FM & Co' inks bell shape & square
49. 5 glass inks, all aqua, octagonal tipper, sml  
cottage, round tipper, barrel & unembossed cottage
50. 4 circular inks, cobalt blue, mid blue, amber &  
green glass
51. Pr of 'Sunbright' lamp bases, green & aqua glass
52. 3 lamp bases 'Sunbright', clear glass, turquoise  
glass example (GM)
53. 'Dansons Eye Salve R L. Pickup Manchester' sml  
pot lid
54. 2 cold cream pot lids: 'Atkinsons Rose Cold  
Cream'
55. Pr pot lids: 'Lewis & Burrows Cherry Toothpaste'  
& 'Boots Cold Cream'
56. 3 toothpaste pot lids: 'S. Maw Son & Sons',  
'Cracrofts Areca Nut John Pepper & Co' + Areca Nut





59



67



82



88



89



90



57. Pr pot lids: 'S. Maw Son & Sons Ambrosial Shaving Cream' pot lid + 'Army & Navy Cooperative Homemade Potted Meats'

58. Grp of blue & green poisons

59. **RAC enamel sign double sided, rusting & some damage, generally needs some TLC**

60. Tins grp: lrg Mackintosh's, Cadburys fingers, Harrods John Buchan Glasgow

61. Books grp: Inc. lrg 1956 Specification book, childrens books, Aircraft books, Model Engineering, Pears annual etc.

62. Mix grp: tyre ashtrays, Matchbox series catalogues, 1981 Prince of Wales cast iron trivet, motoring items etc.

63. Mix grp: tyre ashtrays, cast iron candlestick, AA ashtray, Haigs Dimple bottle, match books, motoring items etc.

64. Tins grp: C.W.S. biscuits, Thornes, Altoids, Zeekol, The Medicants (4) Belisha card games & model van etc.

65. Mix grp: Huntley & Palmers grandfather clock tin, Camera, Midland Bank money box, tankard, Filtraze oil can, Minic ship, model cars & bus tickets etc.

66. Mix grp: AA badge, Helix compasses, Players tin, Guinness labels, cigarette card album, Manchester road map, perpetual calendar etc.

67. **Quality handmade steam engine with accompanying highly detailed wheeled trollies**

68. Mix grp: Essolube Oil bottle, Rajah tin sign, box of Klimax Auto lamps, pewter inkwell, Junior Shell oil can, & can of Brilliant Shino etc.

69. Mix grp: Paperweights, model car booklets, tankard, Prepare to Meet Thy God plaque, marbles & barometer etc.

70. Glassware grp: 2 decanters, various wine glasses, tumblers, tot glasses etc.

71. Mugs grp: some commemorative (3) + Victorian Pottery Co ceramic advert

72. **Metronome wooden cased in working order**

73. Mix grp: Policemans lamp, wing mirror, model aeroplane, Rowntree tin, motoring booklets,

curved enamel sign 'Sowerby Bridge School of Motoring'

74. Books grp: Blacks Guide to Yorkshire 1981, 2 books on Abbeys, Encyclopedia of Sports Games, Yorkshire Tour, English Ceramics & lockable ledger book (unused) etc.

75. Books grp: The Great Planes, Wonder book of Ships, Lords Cricket book, Cambridge and its Story + childrens books etc.

76. Books grp: The Movies childrens books, cigarette card albums etc.

77. Mounted fox head

78. Mounted fox head & mounted fox tail (brush)

79. Mounted fox head 'Wheatland Hounds Gaughley Sept 6th 1936 + fox tail brush

80. 'Ferranti' radio + display case

81. Fruit machine 'Rotomat Jewel'

82. Lrg grp of mainly poisons, blue & green

83. Framed advert 'Zorst VC The British Made Vacuum Cleaner' + Park Drive cigarettes price board + Fiat mat (3)

84. 'Craven A Cigarettes' tin sign + Daily Telegraph in tin sign + framed Great Northern railway Hull & Derby timetables (3)

85. Posters: 'Elf Tyrell' + 'Rolls Royce Story', map of the North Eastern Railway and Connections 1910 & motoring posters

86. Carrying case containing Automobile Association road maps

87. Phillips radio + cased typewriter, packs of transfer sheets + Master paper sheets

88. Salt glazed flask, t.t. flattened flask with side handle (DD)

89. Salt glaze barrel (DD)

90. Salt glaze flask rectangular shape, sloping shoulders (DD)

91. Salt glaze flask, rectangular shape, fluted shoulders (DD)

92. Brown glazed flask with raised decoration (DD)

93. 6 cure bottles: Ridakoff, Alicsalutice, Boys Rheumatism Cure, Bells Coughcure, Smalls & Royal Hospital Cure

91



92



93



94





94. Chestnut Wine bottle, applied handle, pewter top, amber glass, pontilled

95. 4 ointment pots: Holloways, Poor Mans friend, Clarkes, Egyptian Salve + Woods pot lid, boots pot lid & Singletons Eye Ointment (7)

96. Sealed wine bottle, seal with entwined initials & crown above + case gin

97. 4 cure bottles: Calvers Derby Cure + Dr Slades Cough Cure, Tussicura & Tussicura Wild Cherry Pectoral Balm

98. Blue lip codd bottle 'J Ekersley Bolton' + 2 accompanying blue perfume (?) bottles (3)

99. 'Vapo Cresolene' lamp + 'Ideal' glass inhaler

100. Snowhill Arms g.b. 'Snowhill Arms Genuine/ Home Brewer/ Ginger Beer/ E. Beard/ Snowhill (CM)

101. Sheffield slab seal flask 'M. Whitmarsh Market Street 102 West Bar Sheffield'. Repaired

102. Dated sealed wine bottle 'Picton Castle 1827'. Good (CM)

103. Salt glaze lamp base imp'd 'Griffin London' (GM)

104. Doulton Art Nouveaux whisky jug + blue top Sprigware Doulton jug

105. 3 hot water bottles 'The Brampton Footwarmer' + 'Govancroft Footwarmer'

106. Ogdens tobacco jar

107. Grp of assorted Torquay Motto Ware

108. Box of assorted pottery wooden shelf supports etc.

109. Derby slab shoulder seal g.b. bottle + 2 Bourne Patentee g.b's.

110. 3 g.b's: Talbot Gloucester, Plymouth Brewery & William Huxtable Newquay

111. 4 g.b's: C.H. Wren Darlington, J. Singleton Blackpool, E.C. Hillier & McGeorge Newark

112. 4 g.b's: R. Fry & Co Ltd. mcGeorge Newark, Lovells, H. Varney Oxford

113. 4 g.b's: Burbank Oxford, Harry Berrys, Mumby Portsmouth, Reading

Mineral Water Co  
114. 4 g.b's: Batey & Co, Scarboro Brewery, Sinkinson York, W. Rows Wigan



115. 4 g.b's: Dickins Nottingham, Kytes

Birmingham, W.C. James, J H Dodd Northampton

116. Green top g.b. 'G & C Moore Edinburgh & Glasgow'

117. Westerwald Falcon Head flask

118. 4 soda syphons: All clear glass, R Whites, Becketts Barnsley, Tunbridge Jones Reading

119. Army brass compass + heavy duty telephone

120. WW2 galvanised 'Egg preserving pail'

121. Rosebud doll in its original box + china Homepride Fred salt pot

122. 2 figural bottles lady & Eiffel Tower

123. Box of drug jars, poisons etc.

124. 6 labelled cobalt blue glass syrup bottles

125. Advertising scales 'The Consise Household Encyclopedia'

126. 2 whisky bottle optil stands 'White Heather' & 'John Begg'

127. Pr advertising champagne buckets + bottle of champagne (3)

128. Box of printed ware, cream pots etc.

129. 2 vintage gardening books + tin/ wood insect gardening spray (3)

130. Three faced Bisque dolls head & limbs + doll making instructions. Exc/ A1 extremely rare!

131. 4 Crested china pieces: Pig, shoe, ship & Shakespeares house

132. Mr Pickwick character whisky jug + Oldham m/striker + Shakespeares m/striker (3)

133. Heavy duty 'Salter' brass & iron balance

134. 3 Imari china items, inkstand inkwell & invalid feeder (3)

135. 1953 cased set of coronation coins + 4 world savers medals

136. 1930's waxed cream pot + milk bottle tops

137. Metal sign 'Private Property Fishing Prohibited'

138. Black glass beers, 3 from Colchester Leamington & Hull (7)







139. Box of assorted collectors spoons 120+

140. Lrg grp of mainly theatre, opera programmes

141. Postcards & photographs, greetings cards etc.

142. Wild Flowers magazines + The Family Physician book + Medical Encyclopedia Ready Reckoner etc.

143. Pr of Pratt plates 'The Bully' + another

144. Pr of Pratt plates 'Preparing for the Ride' + 'Skewbald Horse'

145. 3 Pratt pot lids 'Garibaldi' 'Philadelphia Exhibition' & 'The Wolf and the Lamb'

146. 7 Pratt plates inc: Preparing for the Ride, The Waterfall, Red Bull Inn The Queen God Bless Her etc.

147. 2 Pratt lids & base 'Trafalgar Square' + 'Flute Player'

148. 4 pot lids: Woods Areca Nut, Army & Navy toothpaste, Cracrofts Toothpaste & Cold Cream

149. Lrg sealed case gin (CM)

150. Assorted inks, glass & stoneware

151. 3 cream pots + mustard jar + 2 Boots Confection of Senna

152. 2 soda syphons, clear glass acid etched 'Rawlings'

153. Lrg grp poison bottles, blue & green glass

154. BRISTOL 'Bells Betel Nut Toothpaste' pot lid with by appointment coat of arms

155. 'Cherry Toothpaste' pot lid with crown pict. t.m.



157. 'Thorntons Celebrated Toilet cream

Manchester' pot lid. Good

158. 'Saponaceous Tooth Powder Dr Bowditch

F.S.Cleaver London' pot lid

159. 'Cherry Toothpaste Patronized by The Queen

John Gosnell & Co Ltd' pot lid

160. 'Cherry Toothpaste Patronized by The Queen

John Gosnell & Co Ltd' pot lid with base, green & bronze

161. '1871 Agreement for Copartnership as Soda

Water Manufacturers' document

162. Green glass codd bottle Dobson Patent

embossed 'The Erewash Valley Brewery Ilkeston'.

Lip chip

163. Edwards Patent bottle embossed around base

'Davenport & Co London'

164. Amber glass codd bottle embossed 'Leigh & Co

Salford' (GM)

165. Premier Patent bottle embossed 'Milnes & Son

Undercliffe Bradford' (KB)

166. Green glass codd bottle embossed 'The

Scarboro & Whitby Breweries' (GM)

167. 'Bob Armstrong Invalid Dublin Stout/ Dipton

Lintz Green' stout bottle (KB)

168. 6 N.E. stout/ g.b's: T Armstrong, Bewick Bros,

Laing & Co, W.H. Wood, Ben Ewe & laing &

Company (KB)

169. 4 g.b's: R. Massey Leek, Golden West Co

Leederville, R Emmerson & Carlisle Brewery

170. 'Mathew Knott Guinness's Extra Stout No

Shields' blue transfer (KB)





170. 4 glass pub jugs: 2 Senior Service, Nelson Cigarettes & Players Please

189. 'Motorcycle' magazines 1939

190. Very stylish Sputnik cigarette lighter. *The Sputnik satellite was launched by Russia in 1957*

191. AA key & date badge

192. Peek Fearn sample biscuit tin + Macfarlane Lang & Co's advertising tape measure

193. 1960's Omega stopwatch, in working order

194. Brown/ gold Parker Vacumatic fountain pen made in Canada 1943, brown is the most uncommon of this design

195. Enamel door finger plate 'Masons Quality Drinks' (GM)

196. Rolls Royce 1905 All-British Motor car booklet. Absolutely mint!

197. Small green glass jug with enamelled decoration snowdrops, pontilled (GM)

198. Plymouth Eddystone Lighthouse condiment set

199. Tiger sauce spinner advert

200. Salt glaze inkwell, grapes & vines raised decoration (GM)

201. Cottage ink, aqua glass

202. World globe ink, aqua glass

203. Pontilled ink + labelled 'Jascot' ink

204. Grp of unspillable inkwells aqua & glass clear glass

205. 5 inks: green square ribbed tent shape, round pen recess + embossed round ink 'Napoli' & pontilled amber glass night light

206. 5 inks: square cobalt, round cobalt, octagonal & round mid blue & aqua square 2 pen rests

207. 3 curry paste jars: Halford's, green label & J.A. Sharwood. Good (CM)

208. Richardsons Scarboro cream pot + 2 Virol jar variations. Good (GM)

209. 3 'Woods Areca Nut 6d Toothpaste' pot lid one with base (GM)

172. 2 'William younger Scotch Ale' pub jug variations

173. 2 pub jugs: 'Dunvilles Whisky' & 'Smoke Phillips Empire Leaf 71/2d per oz'

174. 2 pub jugs: 'Black 7 White Scotch Whisky' & 'Allsopp's'

175. 'Ind Coope Allsopp' pub jug + 'Mitchells & Butlers Ltd' beaker

176. 2 Johnny Walker pub jugs

177. 'Players Please' stoneware pub jug, blue top, blue transfer. Lovatta Langley p.m. (GM)

178. 4 glass pub jugs: 'Holts Mountain Cream Scotch Whisky' + 'O.H.B. Scotch Whisky' + 'Bulloch Lade Scotch Whisky'

179. Lrg pharmacy grp: chemist rounds, rectangular chemist bottles + stoneware jar etc.

180. 3 Harry Potter books, Royal Doulton Figures book signed by Tommy Trinder, pottery book & Man His Diseases and How to Cure Them

181. Mix grp: Mantel clock, copper posher, clockwork locomotive (in pieces), calculator & Sony Walkman

182. Clarice Cliff framed multicoloured poster

183. Boxed model cars, vans, buses + transistor radio

184. Lrg book 'Morris cars 1913-30' collated & edited by Philip AJ Garnons

185. 'The Bentley Drivers Club Review' grp of magazines 1940's & 50's

186. 'The Ford Times' 2 boxes of magazines 1929, 31, 32 etc.

187. 'The Ford Times' 2 boxes magazines 1930's

188. 'Motorcycle' magazines 1938



210. 6 eyebaths: 2 green, 1 cobalt blue, 3 clear glass. Good (GM)  
 211. Pair of opera glasses. Good  
 212. 'Kents Knife Cleaner' oval ceramic plaque M. H & Cos + 2 Queen Victoria round plaques. Good (GM)  
 213. Gillette razors & blades ashtray. Doulton p.m. Good. (GM)  
 214. Henley & Arden soda syphon blue glass acid etched 'Arden Mineral Water Co Henley on Arden'  
 215. Stratford on Avon soda syphon, pink glass acid etched 'Smith Spencer Limited Stratford on Avon'  
 216. Buenos Aires soda syphon blue glass embossed 'Soda Sifonzo'  
 217. Norwich & London soda syphon, clear glass acid etched 'Caley Ltd Norwich. London' with by appointment coat of arms  
 218. Manchester soda syphon, clear glass acid etched 'J.H Cuff/ Manchester' sailor pictorial t.m.  
 219. M. Beache soda syphon, pale green glass, acid etched 'Boissons Gazeues/ M. Beache'  
 220. Slipper bed pan, white glaze green print + Rington's Tea jar willow pattern (GM)  
 221. Patent 1893 can opener + cast iron 'Contact Pistol Safti killer' + cast iron 'India Oil Stone' (GM)  
 222. Box of 'Puma' copying pencils in various colours  
 223. Sutherlands Salmon Paste dish + Bowers Potted Beef Paste dish  
 224. Mix bottles grp: Hemsley Codd bottle + blue & green poisons + ink bottle, Bovril etc.  
 225. 5 'Essolube' clear glass oil bottles  
 226. 11 beer bottles Birkenhead, Openshaw, Walkden, Manchester, Newton Heath & Edinburgh  
 227. Lrg flagon: 'Gadd's/ 2d Per Glass/ West Bromwich Non Alcoholic Ginger Wine'  
 228. Stergene flagon, green top 'Stergene Deposit 2/6'  
 229. Sml Peterborough flagon 'C. Cunningham & Son Botanical Brewers Fincham House Garton End Road Peterborough'  
 230. Cast iron wagon plate 'L.N.E.R. 5 Tons 1936 Darlington 2246'  
 231. 'Theakstons' pub mirror + 'Tetley Bittermen' advert (2) + 'Newcastle Brown Ale' tin advert + brass framed advert  
 232. Baseball tankard + Doulton jug (handle off) + candlestick + 2 egg cups  
 233. Mix pottery grp: Boots Confection of Senna, Sainbury Potted Meat jar, light pull, button lids: Boots, Searlys, Cherry T/paste + pot lid etc.  
 234. 3 cure bottles: B.W. Hair Asthma Cure, Warners Safe Cure Concentrated, Dr Hair's Asthma Cure London. Good

222



235. 'The Gloy Manufacturing Co London' cobalt blue glass conical shape bottle (GM)  
 236. 'Everclean Patent E. Wolff & Sn London' aqua glass lidded jar  
 237. 9 cure bottles: Wands, Woods, Sally come Up, Roes, Abingdales, Amblers etc.  
 238. 5 cure bottles: Johnsons Curalgia, Manchester Cough Cure, Bennetts Stockport, Bensons, Jones Perfect Cure  
 239. 3 sml stoneware whisky jugs imp'd 'A Calder Edinburgh' + 'Wilson & Co Edinburgh' + 'J Houliston Leith Street'  
 240. 3 sml stoneware whisky jugs imp'd 'D. Stewart Edinburgh' + 'James McGhee Edinburgh' + 'George Penman Masonic Arms Cowdenbeath'  
 More items to be added from 241 to 336..... make sure you pre-order the FULL Saturday Unreserved catalogue off the BBR website - it's FREE!  
 337. Pr salt glaze bitter (?) bottles (DD)  
 338. Mermaid figural spirit flask, shiny brown glaze (DD)  
 339. Merman figural spirit flask, shiny brown glaze (DD)  
 340. Mermaid figural spirit flask, shiny brown glaze  
 341. Brass pestle & mortar (CM)  
 342. 6 Copeland Spode willow pattern dishes + sml Plymouth Rock dish + John Moir & Son marmalade jar + (2) Kiwi Polish brushes (10) (GM)  
 343. Chester g.b. (?) 'Walker & Knight Wine & Spirit Merchants Northgate St Chester' (GM)  
 344. Stout bottle 'W.B. Reid & Co Ltd Nourishing Stout Newcastle on Tyne' (KB)  
 345. 'The Brewery Henley-on-Thames' g.b. Bee pictured (CM)  
 346. Leith g.b. 'Watson & Maitland Brewed Ginger Beer Leith' (IM)  
 347. Redruth g.b. 'Redruth Brewery Co Ltd Redruth'  
 348. Vauxhall g.b. 'Barrett's Unrivalled Berwed Ginger Beer Vauxhall' (CM)  
 349. Blackhall Mill stout bottle 'T. Armstrong Invalid Dublin Stout Blackhall Mill' (KB)  
 350. Split size g.b. 'J. McCallum & Son Edinburgh' (IM)  
 351. Leeds & Harrogate g.b. 'Harston & Co Limited Leeds & Harrogate' corkscrew t.m. (CM)  
 352. 3 g.b's: T.W. Lawson Manchester, Coventry Coffee Tavern Co Ltd + R. Fry & Co Ltd Brighton  
 353. 3 stout & g.b's: The New Brewery Co Carlisle, Sir Richard Hodgson Carlisle, Glassons Penrith Breweries (KB)  
 354. Kitchenalia grp: 5 T.G. Green Greenline storage jars + Cornishware pepper jar, storage jar, Domino plates & saucers etc.



**355.** 27 BBR Auction catalogues 2007-2008

**356.** 19 BBR Kitchenalia catalogues 1997-2006

**357.** 25 BBR Auction catalogues 2000-2007

**358.** 22 BBR Advertising catalogues 1996-2006

**359.** 'Thorntons Celebrated Toilet Cream' pot lid & base

**360.** 'Otto of Rose Cold Cream' pot lid

**361.** Cold Cream pot lid & base

**362.** Portmerion dish 'Potted Game' rabbit pictured (NL)

**363.** 'Doans Ointment' tin in original box (NL)

**364.** 'J. Lignum & Sons Scurvy Ointment Established 1790 Price 1s 9d' ointment pot

**365.** Hexagonal poison bottle cobalt blue glass 'Great northern central Hospital'

**366. Pr** 'Minimax' fire extinguishers blue & green glass

**367.** 4 cobalt blue glass inks: circular, octagonal, boat & square shape (NL)

**368.** Wooden display cabinet 30.75 x 28 x 7ins, deep fitted with 7 shelves

**369.** Ashtrays: Watneys Ales, St Bruno Flake, Suntory Whisky + patent ink purifier + Jewsbury & Brown matchstriker (JR)

**370.** 2 Australian g.b's 'Golden West Co Perth' (CM)

**371.** 2 Australian g.b's 'Kadina Mineral Water Co' & 'G. Hail & Sons South Australia' (CM)

**372.** 2 Slave Island g.b's 'Columbo Aerated Water Co' & 'The Royal Aerated Water Co' (CM)

**373.** 2 g.b's: Australian Mineral Water Works Johannesburg' + 'Piesses Stone Ginger Beer' blue top (CM)



**374.** 2 g.b's 'Thomas Crerars Berg St Maritzburg' + 'Horonda Brewing Co Ginger Beer Subiaco' (CM)

**375.** 2 g.b's 'Donaldson And Collins Northam' + 'J. Rice Bourke Cordial Maker' (CM)

**376.** Lrg stoneware jar imp'd 'H & JJ Turner Grocers New Buckenham'. Good

**377.** 18 sided cobalt blue glass bulk ink bottle. Good (GM)

**378.** Amber glass codd bottle 'Groves &

Whitnall Salford'. Good (GM)

**379.** 'Warners Safe Rheumatic Cure' + 'B.W. Hair & Son Asthma Cure' (GM)

**380.** 3 unusual Gateshead codd bottle patents: **J. Kershaw & Sons, Joseph Wilkinson & J Kershaw**

**381.** Sykes Macvay Patent bottle (GM)

**382.** 3 grey/ green glaze porter bottles 'Handsley & Co Wainfleet', E. Beech Ashton' & 'G & R'

**383.** 3 'Killgerm Co Lid Cleckheaton' bottles golden & red/ amber glass (NL)

**384.** Boots Hygenic inhaler (GM)

**385.** 'The Gloy/ Manufacturing Co London' cobalt blue glass bottle (GM)

**386.** Display cabinet 25 by 19 by 8.5ins, deep fitted with 2 shelves

**387.** 3 salt glaze jugs all with raised hunting motifs

**388.** 3 salt glaze jugs all with raised hunting motifs

**389.** 3 grey/ green glaze bottles, 2 porters one imp'd 'J. Budd Lincoln' + flask

**390.** 4 grey/ green glaze porters

**391.** 3 grey/ green glaze porters imp'd 'WC Norton Turton Lincoln', 'J. Turner' & 'J.M.G'

**More items to be added**

## FINAL SAT LISTING

**There will be at least 500 lots in the Saturday Unreserved auction.**

**MORE pictures & words can be obtained FOR FREE from BBR**

**email: [sales@onlinebbr.com](mailto:sales@onlinebbr.com) approx 2 weeks prior**

**or check out Facebook 'BBR Auctions'**

**or pre-order off BBR's website: [www.onlinebbr.com](http://www.onlinebbr.com)**

**BBR's remaining 2015 w/e events**

**24th UK SummerNational July 4 & 5    Autumn Extravaganza Oct 3 & 4**

## BBR Terms & Conditions

### CATALOGUE CONDITION TERMS:

As much care as is practicably possible is given to descriptions. Many items are of an age or nature precluding their being in pristine condition. We give serious consideration to concerns brought to our attention but reserve the right to disagree. Any additional information is generally mentioned before bidding begins but it is often not possible to contact absentee bidders at this point.

**We are always happy to answer questions before a sale but it is your responsibility to reassure yourself before purchase.** Generally we will indicate our judgement of lots quality & condition, giving due consideration to age & rarity. For guidance purposes only the following terms are used to give a feel of this judgement.

**Cleaned / Restored:** An object has been subjected to some restoration. Typically with glass items surface may appear tumbled or dipped, to remove unsightly patina or chips, or restored with resin. A ceramic item may have had portions replaced or re-glued. We recommend you examine an item or telephone for AB's assessment of the extent of such. Cat. descriptions may make reference to damage or restoration but omission of such does **NOT** imply a lot is free from defects, nor does a reference to a defect imply absence of others.

**Good:** We judge it to be a good example, displays well, minus overtly unsightly damage. An item that is not pristine with signs of use & age - might include scratches, tears, surface faults.

**Very Good:** The item displays minor signs of wear, apparent on close inspection. This may include inconsequential chips or flaws, some corrosion to metal parts, or minor damage in unseen area (*ie base or rear*).

**Excellent/ A1:** An item as near to possible pristine, taking into account age. A bottle might for instance have base wear but full body sheen & strong embossing - no chips or cracks. Any time of manufacture flaws or patina of age in this instance deemed either part of the character, or not detracting.

### IN SHORT

**Many items are of an age/ nature precluding their being in pristine condition. Some catalogue descriptions may refer to damage/ & or restoration. Omission of such does not imply a lot is free from defects, nor does any reference to a particular defect imply the absence of others.**

### IMPORTANT:

**No statement in this catalogue shall be deemed a warranty, representation or assumption of liability in respect of date, size, condition, quality, importance or provenance.**

**Ultimate judge, & onus, is with the buyer.**

### BIDDING

The highest bidder is deemed the purchaser. Advances on each lot determined by the Auctioneer.

### BIDDING FOR SOMEONE ELSE?

**If you intend to purchase items for another person it is important you obtain a SEPARATE bidding**

**number.**

### POSTAL BIDDING

Performed on behalf of absent buyers to buy items as cheaply as possible competing with other bids. No charge for this.

### POSTAL BID SHEETS

Tied bids - the first to arrive secures. This can result in bidding the same price as someone else but **NOT** securing. It is in your best interest to return forms soon as possible. **If you tel or fax bids through you MUST ALSO post off the bidding form, even though it may arrive after the sale.**

### ESTIMATES

Estimates are purely a guide - taking into account condition, rarity, & current market interests. Particular rarities, highly desirable, or unusual items can, & often do, exceed estimates.

### TELEPHONE BIDDING

**ONLY tel bids STARTING at £200+ accepted due to staffing logistics.**

### RESERVES

'NR' indicates lots **with NO RESERVE**. Other lots may carry reserves but not always.

### PAYMENT

Tel/ postal/ fax & floor bids are a legally binding contract. Purchases to be paid before taken away. Cheques to BBR Auctions. **Overdue accounts charged 3% after 21 days.**

### CREDIT CARD PAYMENTS

BBR accepts: **Visa, MasterCard, Visa Delta & Switch.**

Renegotiated bank charges now just a 3% levy for this.

**You must complete your credit card information on the postal bid sheet - inc. EXPIRY DATE & ISSUE No. & issue date for a Switch card.**

### POSTAGE

Postal purchasers **MUST** advise how they wish items sending. Full p & p costs borne by purchaser. Following a sale we pack, weigh, & invoice for total amount, inc. p & p.

### POSTAL BUYERS

Packing & weighing can take one working week to complete - **please remain patient.**

### BBR PACKING

**Generally our costs are much less than half competitors - such as Mailbox etc.** We try to keep costs low: packing time & materials used. We have extensive experience with all manner of shapes, sizes, & fragility, which may require special boxes! Very bulky or heavy items we suggest carriers rather than Parcel Force. If you have a preferential carrier **please advise when forwarding bids.**

### INSURANCE

BBR can insure goods in transit **IF REQUESTED**. **UK PO rates:** Extra insurance up to £1,000 goods value, £3.00 up to £2,500 value. **NOT** done unless specifically requested at **time of bidding. Please familiarise yourself with P.O. terms & conditions of insurance.**

### OVERSEAS PURCHASERS

Insuring goods requires declaration of **FULL** value. You decide disadvantages/ advantages regarding customs - & advise (on bidding sheet).

**AGENTS** In all cases BBR act only as agents between Vendor & Purchaser.

**COMMISSION** 15% buyers premium on hammer + vat.

# Notes

**FINAL Saturdaylisting  
+ LOTS of images -  
email BBR on Sat 18 Jan  
for final pdf:  
[sales@onlinebbr.com](mailto:sales@onlinebbr.com)**

*email:* **[sale@onlinebbr.com](mailto:sale@onlinebbr.com)**  
**[www.onlinebbr.com](http://www.onlinebbr.com)**

**Elsecar Antique Centre** open 7 days a week 10am - 5pm  
Upcoming auction lots on display in BBR's large green cabinets on the left.



*the best just gets BIGGER!*

# Spring Extravaganza

## Sat 25 & Sun 26 April



### Elsecar Heritage Centre

5 mins jct 36 M1  
follow brown  
"Elsecar Heritage"  
signs - 5 mins.



### Sat 25. 11. Unres'd Auction

500+ Unreserved lots - across every collecting field - doors 9am  
Suitable entries - deliver to Elsecar as soon as possible

### Sun 26. Cat'd Auc. 11. plus the **BIG** Show

120-150+ stalls. E.E. 8.30am £5. Ord Adm'n 10am £2. Auc starts 11am  
Dr Dudley Davidson Stoneware, John Rowe, Kevin Boyle, Chris Mortimer  
& Alan Blakeman Collins, pot lids galore, whisky jugs, inks, cures,  
Advertising, poisons, g.b's, salt glaze, black glass. Every Sun lot cat illustrated.



Next 4 cats  
£20 (UK),  
pdf £3 - see  
BBR website

BBR, Elsecar Heritage Centre, Nr Barnsley, S. Yorks. S74 8HJ

tel: 01226 745156 email: [sales@onlinebbr.com](mailto:sales@onlinebbr.com) [www.onlinebbr.com](http://www.onlinebbr.com)



## **BBR Auctions, Elsecar Heritage Centre**

**Barnsley, S. Yorks, S74 8HJ tel: 01226 745156**

*email:* **[sales@onlinebbr.com](mailto:sales@onlinebbr.com) [www.onlinebbr.com](http://www.onlinebbr.com)**

**BBR's remaining 2015 w/e events**

**25th UK SummerNational July 4 & 5**

**Autumn Extravaganza Oct 3 & 4**