

# Sunday 19<sup>th</sup> October Attleborough

## BBR 'on the road' Entirely Unreserved Auction

Comm. 15% on hammer - immediate payment taken - we bring items to you.

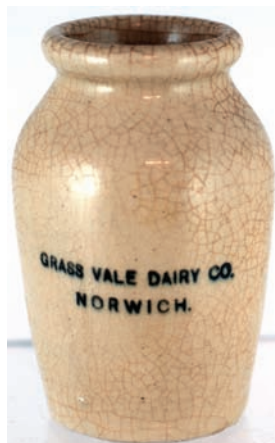
Kicked off @ noon 'ish - take approx 30+ mins.



**A1. WADSWORTH  
blue lip 6oz codd.**

Three vertically embossed lines to front, entwined initials to rear. Good lip colour. 'Patent Safe Groove 4/ Dan Rylands' nr base. Scuffs & nibbles. £118.00

**A2. GRASS VALE  
DAIRY Co/ NORWICH  
cream pot.** 3.8ins tall, off white. Crazed mostly to rear. £11.80



### Provenance stickers

BBR is currently dispersing several collections - these carry provenance initials:

**NL = Norman Lewis**

**KB= Kevin Boyle**

**CM= Chris Mortimer**

**GM= Garth Morrison**

**MH= Michael Harris**

**AB= Alan Blakeman**

**A5. Poisons group.** Tallest 6.75ins, cobalt + 2 aqua, 1 green & an amber (sml) 'Killgerm'. Good. £25.96



### BBR's 2015 'On the Rd' auctions

Confirmed dates:

**Feb 14 Stanley**

**Mar 29 Cirencester**

**May 2 Perth**

**Jun 6 Bowburn**

**Sept 13 Chessington**

**FREE pdf's** - pre-order

from BBR's website:

**www.onlinebbr.com**

Results **FREE** after on BBR's website

**A6. Zara Seal.** 10.7ins tall, aqua marine, cylindrical. Detached applied shoulder seal. Exc/ A1 £14.16

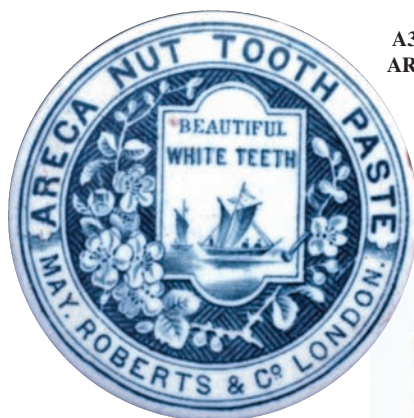


**A7. INKS GROUP.** Various shapes - tipper, boat, cone etc. Blue, aqua, smokey green. Some embossed. Good. (8) £14.16



**A3. 'MAY ROBERTS/  
ARECA NUT TOOTH PASTE'**

**pot lid.** 2.6ins diam. 2 boats to centre surrounded by asymmetrical floral outer. Fabulously well struck example of this unusual lid. Very good. £35.40



**A4. Pair N.E. Stouts.** Both ch, t.t. 1. Bewick Brothers/ Blaydon (stags pict). 2. J Collins/ Newcastle (shaking hands t.m.). Very good. (2) (KB) £14.16



**Tried • Tested • Trusted**  
**www.onlinebbr.com**  
**more sales...**  
**more often**

**A8. PRATT LID** in wooden frame. 'Lend a bite'. Damaged. £3.54



**A9. Group of night lights.** Various colours - indeed - great range! Some damaged, mostly good. (7) (GM) £11.80







**A10. PHARMACY DRUG JAR.** 4.8ins tall, t.t.. salt glaze. Applied detailed coat of arms sprig. Lettering remnants remain on above band, surrounded by additional foliate sprigs. This is truly a very good example of its type - despite the poor photo!! £20.06

## CONDITION

Before bidding please ensure items meet your condition requirements - **INSPECT!**  
On sale day **ALL** items sold **AS SEEN - NO RETURNS**

**A15. HAIR RESTORER duo.** Tallest 7.5ins. 1. Golden amber 'Mrs S A Allens'. 2. Reddy amber 'Dr Wilson's'. Both good. (2) (KB) £5.90



**A11. WADSWORTH/ CAMBRIDGE.** 8.2ins tall, entwined initials & 'trade mark'. **Vibrant bright green** colour. Very heavily embossed. Exc/ A1 - just a super example. (GM) £49.56



**A12. 'CRACROFTS/ ARECA NUT/ TOOTH PASTE'** pot lid 'John Pepper & Co'. Black transfer, **plus second transfer underneath - most unusual.** Tiny rim nick. £5.90



**A13. QUEEN VICTORIA reform flask c. 1860's period.** 9ins tall, shiny brown Rockingham style glaze. Elongated head & upper torso detail, vertical ribs all round lower. Very good. (DD) £20.06

**A14. POTTED MEAT POTS.** 'Horrock & Watson/ Southport' (2), plus small heavy stoneware white glazed dish - to base 'Glover Harrison/ Toronto'. Good. (3) (KB) £3.54



**A16. BURY ST EDMUNDS soda syphon.** 9.5ins tall, **dark ice blue**, vertical body ribs. Acid etched 'Green King/ & Sons Ltd Pure/ Table Waters...' A few knocks, generally good. (GM) £20.06

**A17. TRIO OF OINTMENT POTS.** Tallest 1.9ins. 1. Nature's Herbal. 2. Egyptian Salve (cracked) 3. Machins Infallible/ Pearl. £23.60



**A18. 'BLACK & WHITE' whisky water jugs duo.** Early 'Buchanan's' example with 2 dogs upright one side plus peering over wall other (2 tiny lip nicks) plus another with chequer pattern rim type, 2 dogs each side. Overall good. (2) £25.96



**A19. 'SANDFORD'S/ RADICAL CURE'.** Cobalt blue 7.5ins tall. Heavy panelled medicine type ( base embossed). Very good. £11.80



**ABSENTEE BIDS**  
Absentee bids to be with  
**BBR no later than**  
**Thursday prior** or email:  
**sales@onlinebbr.com**





**A20. PLAYERS NAVY CUT showcard.** Multicoloured image 'Running for Shelter' by Chas. Pears, & pack of 'Medium/ Navy Cut' bottom right. 14.5ins by 19.5ins. Good. £23.60



**A21. 1. PRATT TYPE 'Lady with guitar'** multicoloured raised outer border. Sml base nick. 2. Reddy brown waterside scene with gold border. Good. (2) £11.80

**A22. ST ALBANS codd patent**, heavy aqua glass. Across shoulders 'ADEY & WHITE' below 'Brewery/ St Albans'. Four large base lugs & marble stopper. To rear 'Dan rylands/ 4/ ...' Very good. (GM) £23.60



**A23. WILLS'S/ GOLDFLAKE/ CIGARETTES'.** Stylish & colourful 1950's water jug - bright orange/ yellow body, black lettering, red centre. Very good. (NL) £5.90

**A24. HEAD PIPES.** Various head pipes from small Mr Punch to Sailor, & some femails! 2 black coloured examples. Most fairly good. (12) £31.86



**A25. COBALT PHARMACY SHOP ROUND.** 8ins tall. Deep cobalt blue, heavy (pontilled) stopper. Gold & black label. Very good. £14.16



**A26. DOULTON LAMBETH hunting jug.** 7.5ins tall, t.t., rear handle - various sprigs - family scene, drunks, horse, dogs & deer. A stalwart & robust undamaged piece. Exc/ A1. £5.90



**A27. NORWICH patent desk inkwell.** All white heavy ceramic piece 'Colman & Glendenning'. Some crazing. (GM) £10.62

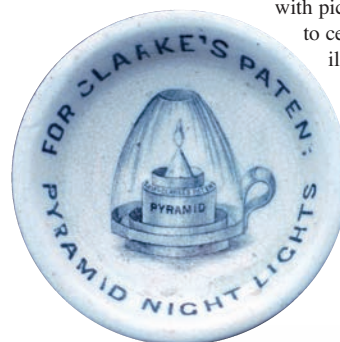
**A28. POISONS GROUP.** 5 cobalt, 1 green, tallest 3.7ins. Wilsons patent type (?) with heart shaped stopper. Good. (6) £17.70



**A29. WOODS/ 6D/ TOOTH PASTE** pot lids, white body black transfer, 2.7ins diam. Very good. (2) £4.72

**A30. CERAMIC FIGURAL CANDLESTICK.** 7.5ins tall. Cream shades with a hint of colour. Stylish period gent beside foilate type candle support. (GM) £3.54

**A31. CLARKE'S PATENT/ PYRAMID NIGHT LIGHTS.** 2.4ins diam. Small white pottery dish with pictorial image to centre of an illuminated candle. £2.36



**A32. INKS GROUP.** Tipper, chimney, smokey green boat, Blackwoods Patent, green octagonal. Mostly good. (6) £3.54





**A33. DAWSONS NORWICH.** 6oz dark green codd. 'Riley/ London Maker' embossed to base. Fantastic colour, fantastic condition of this very rare 6 oz size 'classic'. Exc/ A1. (GM) £224.20



**A34. HANDLED TANKARD.** T.t., salt glaze 4.7ins tall. Various atypical sprigs all round. Base imp'd 'J. Stiff & Son/ London'. Very good/ exc. £23.60

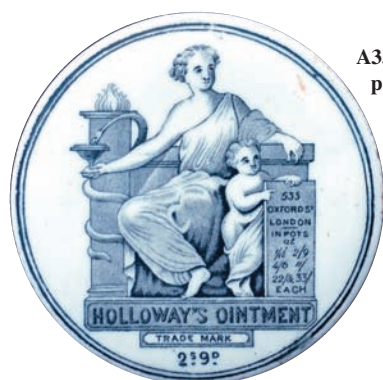


**A39. BURGESS'S/ GENUINE/ ANCHOVY PASTE** pot lid & base. 3.4ins diam. Highly detailed central pictorial coat of arms. Very good. £7.08

**A40. LAWRENCE & SONS/ GT YARMOUTH reverse t.t. g.b.** '1d/ Will be charged...' etc. George Skey/ Tamworth p.m. 'Classic' Norfolk variant. (CM) £7.08



**A41. FRY'S COCOA framed advert.** Colour tinted print of figures in Roman attire. (18920 Good. £5.90



**A35. HOLLOWAYS OINTMENT** pot lid. 3.1ins diam. Strong & clear black transfer lady & child on podium. Single base nick otherwise a very good (early) example. £10.62



**A36. GUINNESS GROUP.** Composition zoo figures - zookeeper, toucan, ostrich & tortoise. Very good. (4) £41.30

**A37. DOULTON LAMBETH 3 handled tyg.** 6.3ins tall, unusual sprigs - windmill by cottage, drunk head down, plus usual rider & dogs. Very good. £35.40



**A38. BUTTERCUP CREAM.** 4ins tall, blue top, blue transfer, central pictorial of milkmaid. Very good. £11.80



**A42. BLACK MARBLE Acme Reliance patent 10oz codd.** 'R WHITE/ CAMBERWELL/ NO DEPOSIT'. Heavily embossed, both sides. Fantastic example - very good. (GM) £29.50



**POSTAL  
(or email) BIDS**  
Should reach BBR no later than Thursday prior - email/ tel to double check

**A43. PAIR SHINY BROWN TEAKETTLE duo.** One example repaired top. Both imp'd 'MP co' to top. (2) £17.70







**A44. 'SAUNDERS/ CAMPHOR TOOTH PASTE'** square pot lid & base. Very ornate & highly detailed pictorial transfer. Base also transferred 'Saunders'. Very good. £43.66

**A45. PHARMACY duo. 1.** Small 5.3ins tall, clear glass label under glass shop round 'P SOD/ BIOA RD' (gold, red & black) plus 2. Small lidded jar, knob to lid, green black body colour. Both good examples of their type. (2) £14.16



**A46. BARWOOD'S CREAMERY/ NORWICH.** 3.6ins tall, strong black transfer, off white body. very good. £11.80



**A47. INKS GROUP.** Smokey aqua tent with diamond reg. Blue circular, green octagonal, aqua Hyde. (4) £7.08



**A48. J G WEBB & CO Ltd/ Indian Tonic/ Islington.** 8.7ins tall, mid amber upright cylinder. Some slight dullness - still a great colour. £35.40



**A49. POISONS GROUP.** Tallest 7ins, 5 cobalt, 3 grc All good. (8) £35.40



**A50. E CASTELL EVANS/ WESTBOURNE GROVE cold cream pot lid.** Central 'globes' t.m. Scarce William Whitely lid. No damage. £29.50

**A51. EARLY SPRIGGED HUNTING JUG.** 7.5ins tall, Delightful t.t. handled jug with deep/ detailed sprigs. Most likely a London made item. Robust! Exc/ A1. £14.16



**A52. BARWOOD & CHAPMAN/ NORWICH.** Off white, wide necked cream pot, 5.5.ins tall. Small black/ grey transfer on an extraordinarily large size scarcity. £49.56



## BBR 'On the Rd' auctions

This is BBR's last 2014 'Otr' sale, 11 in total. Approx. 700 lots, primarily taking local items back to their area injecting fresh 'life' to shows - & it's worked!

**ALL 'Otr' pdf cat's** are **FREE** - pre-order from BBR's website: **www.onlinebbr.com**

Results available **FREE** after from BBR's site

## CONDITION REPORTS

Absentee bidders can  
tel: **01226 745156** or email:  
**sales@onlinebbr.com**





**A53. 'W TRETT/  
SUPERIOR/  
AERATED/ GINGER  
BEER/ YARMOUTH',  
aqua.** Around base 'E.  
BREFFIT & CO/  
MAKERS LONDON'.  
Overall dullness. An  
early mineral scarcity  
(GM) £53.10



**A57. COBALT TEAKETTLE INK.** Ground lip,  
multifaceted (curved) side panels. Superb bright cobalt glass  
colour. Small corner edge flaw/ repair - displays well. (NL)  
£64.90

**A54. 'B & CO L/ ARECA NUT  
TOOTH PASTE' pot lid.**

Mosque & palm trees pictorial to  
centre. Small underside of base  
repair. £20.06



**A58. F NEWBERRY & SONS,  
LONDON/ CHERRY TOOTH  
PASTE pot lid.** 2.6ins diam. Extremely  
sharp black detailed transfer of Nordic  
boat in costal scene. Very good. £59.00



**A59. NAMED  
GREYHOUND  
HANDLED LOVING  
CUP.** T.t., salt glaze,  
4ins tall, sprigs  
all round. To one  
side 'Richard  
Davis/ Pure  
Mineral Waters/  
20 Maddox Street  
W'. Very good. £47.20



**A55.  
GUINNESS  
ZOO  
ANIMALS  
resin group -  
section,**  
kangaroo,  
ostrich & a  
pelican. Very  
good. (4) £31.86



**A56. AMBER GLASS  
FIRE GRENADE.** 6ins  
tall, golden amber.  
'SYSTEME LABBE' to  
one raised side circle...'L'  
combustibilite/ Paris'  
around middle. Very good.  
(AB) £31.86



**A60. WADSWORTH/  
CAMBRIDGE vibrant/  
bright green 6oz codd.** Four  
neck dimples. Heavily  
embossed to front  
'WADSWORTH' and to the  
rear 'CAMBRIDGE' Base  
embossed with maker etc.  
Simply superb!! Exc/A1  
(GM) £283.20



## FULL RESULTS

will be posted to  
BBR website (Mon/ Tues)  
after, also on all forums, or  
simply email AB for the pdf