

**Saturday 4 Oct**  
**Sunday 5 Oct**

500+ lot Unreserved Auction

**MAJOR Show & Auction**



**BBR's 2014**  
**Autumn**  
**Extravaganza**  
week-end &  
*"... the Yanks*  
*are coming..."*

**Antique**  
**Bottles,**  
**Pot Lids &**  
**Advertising**



Ginger beers Tins Poisons Old cabinets Pub Jugs Salt Glaze Pot lids Minerals Pharmacy Inks  
Stoneware Black glass Whisky jugs Kitchenalia Early Doulton Cream pots Guinness Enamel signs



# BBR's 2014 Autumn Extravaganza

## Saturday 4 October

Unreserved Auction, Blg 21

## Sunday 5 October

## BIG Show

## & Auction

## all in Blg 21



**SATURDAY 500+ lot Auction**

Doors open 9am **Sale 11am**

**SUNDAY Show & Auction**

E.E. 8.30am Auction viewing 9am **Sale 11am**

Postal, tel. (*book lines early!*) & fax bidding facility. Low cost after sale p & p worldwide

**Buyers premium 15%, plus vat - only on premium**

**Sunday auction held beside BBR's Autumn Extravaganza for which there is an admission charge**

**FREE PARKING**

**ACCOMMODATION:** see list to rear of catalogue, or email BBR

**Viewing stops approx. 10 mins. before sale start @ 11am. Sunday bidders must register early, to obtain a bidding number. All items sold 'as seen' on sale day. - all must view & inspect goods beforehand & accept BBR's Terms & Conditions (rear of cat/ print outs on viewing tables).**

**Payment & collection can take place any time during the sale.**

**BBR, Elsecar Heritage Centre, Nr Barnsley, S Yorks., S74 8HJ**

tel: **01226 745156** fax: **01226 361561** email: **sales@onlinebbr.com** **www.onlinebbr.com**

**Collector provenance stickers** BBR is selling a number of large collections all bearing a 'provenance' sticker. Bracketted initials denote who from: CM = Chris Mortimer JR = John Rowe NL = Norman LewisHH = Henry Horne KB = Kevin Boyle IM = Ian McKenzie AB = Alan Blakeman DD = Dr Dudley Davidson

the Chris  
Mortimer  
collection



John  
Rowe  
collection



the Norman  
Lewis  
collection



the Michael  
Harris  
collection



the Kevin  
Boyle  
collection



the Ian  
MacKenzie  
collection



the Alan  
Blakeman  
collection



the Dr Dudley  
Davidson  
collection



Catalogue prepared by Frank Burgin, Clare Bell & Alan Blakeman

**TERMS & CONDITIONS** are printed to catalogue rear. All bids accepted on the understanding these have been read & accepted



**Pratt types.**

**1. MENDING THE NETS PRATT JAR (KM 503)**

3.25ins tall, **multicoloured** scene probably produced at the Pratt Factory. Very good. NR £40-60+.



**2. CONSTANTINOPLE THE GOLDEN HORN PRATT JAR (KM 513)** 3.25ins tall, **multicoloured** scene produced by Ridgway & Co. Very good. NR £40-60+.



**3. THE PERFORMING BEAR (KM 12)** 3ins diam,

**multicoloured** pot lid, produced probably by J. Ridgway. Some restoration but still a very rare offering. NR £200-300+.

**4. ALAS POOR BRUIN (KM 1)**

3.25ins diam, **multicoloured** pot lid. Produced by the Pratt Factory. Some crazing underside. Scarce large size. NR £60-80+.



**5. CHURCH OF THE HOLY TRINITY STRATFORD-ON-AVON (KM 229)**

4.25ins diam, wooden framed pot lid, **multicoloured** scene. Good. NR £60-80+.

**6. THE NING PO RIVER (KM 92)** 4ins diam, **multicoloured** pot lid, produced by the Pratt Factory. Good. NR £30-40+.



**7. THE CAVALIER (KM 128)** 4ins diam, **multicoloured** pot lid, produced by the Pratt Factory. Good. NR £30-40+.

**8. THE TRYSTING PLACE (KM 117)** 3.25ins diam, **multicoloured** lid with base. Probably produced at the Mayer Factory. Good. NR £40-60+.







**9. LANDING THE FARE PEGWELL BAY (KM 46)** 4ins diam, **multicoloured** pot lid produced at the Cauldon Factory by Ridgway Bates & Co. Lady with **red & white** dress version. Very good. NR £30-40+.

**10. PEACE (KM 213) TREFOIL - SHAPED LID & BASE.** 5.5ins long.

**Multicoloured** scene. Lid very good. Some rim nibbles inside base, good colours. NR £40-60+.



**11. THE FARRIERS (KM 278)** 5ins diam, **multicoloured** pot lid produced by the Pratt Factory. Chip to bottom edge flange otherwise tip top. NR £30-40+.

**12. No lot.**

**13. EXAMINING THE NETS (KM 61)** 4ins diam, **multicoloured** pot lid produced by the Pratt Factory. Good. NR £30-40+.



**13. No lot.**



**16. THE SPORTSMAN (KM 305)** 4.25ins diam, **multicoloured** pot lid produced by the Pratt Factory. Good. NR £20-30+.

**14. CATTLE & RUINS (KM 275)** 4.25ins diam, **multicoloured** pot lid, produced by the Pratt Factory. Some crazing. NR £30-40+.



**Bears grease pot lids.**

**17. RUSSIAN BEARS GREASE POT LID WITH BASE.**

4ins diam, 'RUSSIAN BEAR'S GREASE/ DELICATELY SCENTED' large bear with sash depicted 'GENUINE AS IMPORTED'. NR £80-120+. (NL)



**18. RUSSIAN BEARS GREASE POT LID.** 2.75ins diam,

'GENUINE RUSSIAN BEARS GREASE/ FOR INCREASING THE GROWTH OF HAIR' 2 bears pictured. Some staining etc. dull/ bit grubby - but rare. NR £60-80+.



**19. BEARS GREASE POT LID.** 2.5ins diam,

'GRAISSED OURS DE NORD' bear pictured with trees. Some fading overall but still a rarity. NR £60-80+.



**SALE DAY FLOOR BIDDERS**

All items sold **AS SEEN**. Bidders must ensure lot/s meet personal condition standards.





**20. BEARS GREASE POT LID.** 2.75ins diam, **blue** transfer 'GENUINE/ BEARS GREASE/ IMPORTED BY/ JOHN GOSNELL & CO/ SUCCESSORS TO PRICE & GOSNELL/

LONDON AND PARIS' standing bear pictured. Minor overall crazing, otherwise very good. NR £80-120+.

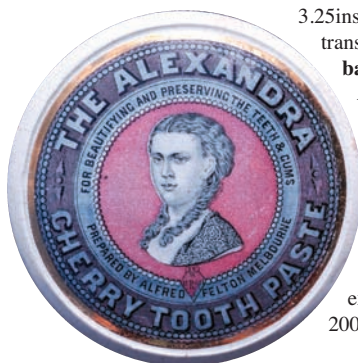


Toothpaste lids.

**21. BURGOYNE BURBIDGES TOOTH PASTE POT LID.** 3.75ins diam, **black** transfer, **pink** background. Girl with long curly hair pictured 'BURGOYNE, BURBIDGE & COS/ CHERRY TOOTH PASTE'. An exceptionally rare & fabulous all time classic pictorial. Good. NR £400-600+. (NL)

**22. ALEXANDRA TOOTH PASTE POT LID.**

3.25ins diam. black transfer on **pink & blue** background 'THE ALEXANDRA CHERRY TOOTH PASTE' portrait of Princess Alexandra on **pink** to centre. A really very good example. NR £180-200+.



**23. RIMMELS BUNCH OF CHERRIES (KM 437)** 3ins diam, **multicoloured** pot lid produced by the Mayer Factory 'RIMMELS CHERRY TOOTH PASTE'. Superb colours. Good. £150-200+.



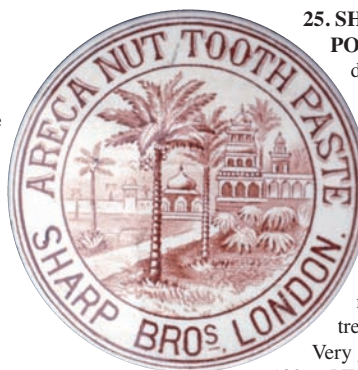
**24. EDINBURGH TOOTH PASTE POT LID WITH BASE.**

3.5ins diam, 'FRAGRANT CHERRY TOOTH PASTE H.C. BAILDON & SON PRINCES ST EDINBURGH'. Scotts monument pictured. Very rarely offered. Good. NR £120-150+. (NL)



**25. SHARP BROS POT LID.** 2.5ins

diam lid & base **sepia** transfer. 'ARECA NUT TOOTH PASTE SHARP BROS LONDON' mosque & palm trees pictured. Very good. NR £80-120+. (NL)



**26. MONA TOOTH PASTE POT LID.** 2.75ins diam, 'MONA

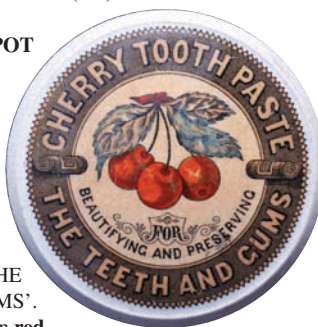
TOOTH PASTE/ OKELLS TRADE MARK/ PREPARED ONLY BY THE PROPRIETOR OF OKELLS MONA BOUQUET'. Douglas Pier pictured. Good. NR £40-60+.



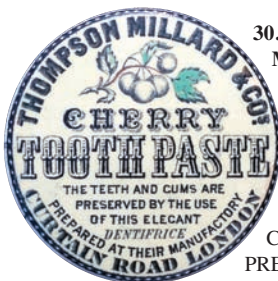


**27. SANDRINGHAM TOOTHPASTE POT LID & BASE.** Green transfer 'SANDRINGHAM ARECA NUT TOOTHPASTE' floral design with sailing ship to centre. Very good. NR £40-60+. (NL)

**28. CHERRY TOOTHPASTE POT LID.** 3ins diam, yellow & red colouring 'CHERRY TOOTHPASTE/ FOR/ BEAUTIFYING AND PRESERVING/ THE TEETH AND GUMS'. Cherries pictured in red. Fabulous colours. Good. NR £60-80+.

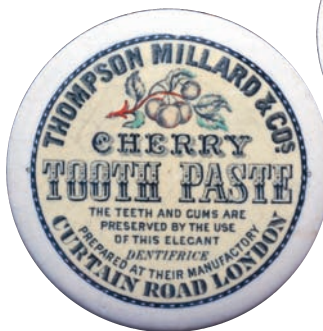


**29. No lot**



**30. THOMPSON MILLARD & CO TOOTHPASTE POT LID.** 2.5ins diam, black transfer on pale yellow background. 'THOMPSON MILLARD & COS/ CHERRY TOOTHPASTE/ PREPARED AT THEIR MANUFACTORY CURTAIN ROAD LONDON' Bottom flange flake . NR £60-80+.

**31. THOMPSON MILLARD & CO TOOTHPASTE POT LID.** 3.25ins diam, black transfer on pale yellow background 'THOMPSON MILLARD & COS/ CHERRY TOOTHPASTE PREPARED AT THEIR MANUFACTORY CURTAIN ROAD LONDON'. Good. NR £60-80+.



**32. G. DOREZ TOOTHPASTE POT LID.** 2.75ins diam, 'CHERRY TOOTHPASTE/ G. DOREZ LONDON E.C.'. Very good. NR £60-80+.



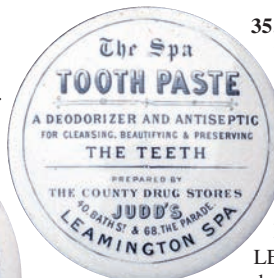
**33. LICHFIELD TOOTHPASTE POT LID & BASE.** 3.25ins diam, 'PERKINS/ CHERRY/ TOOTHPASTE/ TAMWORTH ST/ LICHFIELD'. Flange restoration. Extraordinary pictorial? Very rare. NR £40-60+.



**34. CHERRY TOOTHPASTE POT LID.** 2.75ins diam, 'CHERRY TOOTHPASTE/ FOR CLEANING & PRESERVING THE TEETH AND GUMS' lady with scales & sword pict. t.m. Very good. NR £60-80+.



**35. LEAMINGTON TOOTHPASTE POT LID.** 3ins diam, 'THE SPA/ TOOTHPASTE/ PREPARED BY/ THE COUNTY DRUG STORES/ JUDD'S/ 40 BATH ST & 68 THE PARADE/ LEAMINGTON SPA'. Very good. NR £40-60+.



**36. LEAMINGTON CHEMISTS BUTTON LID.** 1.75ins diam, white glaze, black transfer 'H. DAVIS/ PHARMACEUTICAL/ CHEMIST/ WARWICK ST/ LEAMINGTON'. Very good. NR £20-30+.







- 37. EDINBURGH BUTTON LID.** 1.75ins diam, 'S. PURVES CHEMIST/ 70 HAYMARKET TERRACE EDINBURGH'. Holyrood Palace pictured. Few marks generally good. NR £30-40+.

**38. BRISTOL MINIATURE POT LID & BASE.** 1ins diam, 'FLUORON SOLE AGENTS NIEHUS BROS/ BRISTOL'. Extremely rare. Unique pyramid shape base. Good. NR £40-60+.



**39. SHAVING SOAP DOMED POT LID.** 3.25ins diam, strong **green** transfer 'T.F. BRISTOW COS/ SHAVE EASY/ SHAVING/ SOAP'. Top edge chip. NR £20-30+.



- 40. HULL COLD CREAM POT LID & BASE.** 3.5ins diam, **blue** transfer 'FRANCIS EARLE PHARMACEUTICAL CHEMIST/ ROSE COLD CREAM/ 22 MARKET PLACE HULL'.



Holy Trinity Church Hull pictured. Top outer edge chip, most of gold band intact. Very large size. NR £80-120+. (NL)

- 41. SHARP BROTHERS COLD CREAM POT LID.** 2.75ins diam, **red** transfer 'SHARP BROTHERS COLD CREAM/ 12 SOUTH-AMPTON ROW/ LONDON'. Harp pict. t.m. Superb strong transfer colour. Very good. NR £80-100+.



- 42. NORTHAMPTON COLD CREAM POT LID.** 2.75ins diam, 'OTTO OF ROSE/ COLD/ CREAM/ PREPARED ONLY BY/ FRED KIRBY/ CHEMIST/ NORTHAMPTON'. Very good. NR £20-30+.



- 43. RUGBY COLD CREAM POT LID.** 2.5ins diam, 'A. GARRATT CHAMBERLAIN/ PHARMACEUTICAL CHEMIST/ COLD CREAM/ 3 MARKET PLACE ESTD 1813/ RUGBY'. Good. NR £20-30+.



Minerals & patents.

- 44. STONWARE HAMILTON BOTTLE.** 8.5ins long, **mid brown** glazed hamilton impressed 'BATHGATE & CO/ CALCUTTA' to front 'J. BOURNE PATENTEE' with four lines of printing p.m. to rear. Very good. NR £600-800+. (DN)



## CONDITION - help us to help you!

If you spot condition differences/ faults/ repairs which we have not please advise BBR staff. As always we will announce such amendments prior to the sale.





**45. STONEWARE HAMILTON BOTTLE.** 6.5ins long, **mid brown** glazed hamilton impressed 'FRITH GORDON & CO/ CALCUTTA' to front 'CODNOR PARK

POTTERY/ BURTONS/ SUPERIOR WARE EX" to rear. Lip flakes. NR £600-800+. (DN)



**48. DERBY CODD HAMILTON HYBRID BOTTLE.** 7.25ins long, aqua glass embossed 'WALLIS/ DERBY'. No marble retaining lug across neck. Rare. Very good. NR £60-80+. (GM)



**49. BIRMINGHAM COBALT BLUE ROUND BOTTOMED CYLINDER.** 9ins long, vivid **cobalt blue** glass embossed 'GOFFES/ POTASH/ WATER/ BIRMM'. Very good. NR £120-150+.



**46. STONEWARE HAMILTON BOTTLE.** 6.5ins long, **dark brown** glaze, impressed 'B.S.WM/ EX'. Good. NR £600-800+. (DN)

**47. STURGEONS HAMILTON TYPE BOTTLE.** 10ins long, aqua glass hamilton bottle with bulb neck. Applied square lip embossed 'STURGEON'S/ PRESERVED MILK'. Very good. NR £400-600+.



**50. No lot.**

**51. VENTNOR AMBER DUMPY CODD BOTTLE.** 7.5ins tall, **golden amber** glass front embossed 'ROYAL UNDERCLIFFE' to top of map of Isle of Wight with 'WATERS AND ICE COMPANY VENTNOR' embossed inside. 'CODDS PATENT/ 4/ MAKERS/ CODD & RYLANDS/ BARNSELEY' to rear. Very good. NR £600-800+.





**52. WESTON SUPER MARE AMBER DUMPY CODD BOTTLE.** 7.25ins tall, **golden amber** glass, front embossed 'ROSS & COMPANY LIMITED/ REGISTERED OFFICE WESTON SUPER

MARE' with 'ROSS'S' to rear. Slight pitting front & rear but an as found unpolished rarity. NR £500-600+. (GM)



**53. EARLY CODD BOTTLE.** 8.5ins tall, early flat bottomed codd bottle, slim neck with **blue marble!** Embossed 'CODD'S/ PATENT/ 4/ LONDON/ S.E.'. Base embossed 'B. RYLANDS BOTTLE WORKS ARDSLEY NR BARNESLEY'. Believed only known example? NR £500-600+. (GM)



**54. KIDDERMINSTER AMBER LIP CODD BOTTLE.** 7.5ins tall, aqua glass bulb neck codd bottle with **red/ amber** lip, embossed 'J. HITCHON/ KIDDERMINSTER' to front 'DAN RYLANDS/ MAKER/ BARNESLEY' to rear. Extremely rare. Very good. NR £300-400+. (GM)



**55. BRIXTON VALVE PATENT CODD BOTTLE.** 9ins tall, aqua glass embossed 'THIS BOTTLE IS... PROPERTY OF... BRIXTON S.W. MINERAL WATER CO LTD' to front 'PATENT RYLANDS VALVE/ 4/ SOLE MAKER/ DAN RYLANDS BARNESLEY' to rear. Very good. NR £120-150+.



**56. COVENTRY AMBER CODD BOTTLE.** 9ins tall, **golden amber** glass standard codd bottle embossed 'H.J.P. PEARSON COVENTRY' to front 'REDFEARN BROS/ BOTTLE MAKERS/ BARNESLEY' to rear. Slight dullness areas - as dug. NR £80-120+.



**57. CONNORS PATENT CODD BOTTLE.** 9ins tall, aqua glass bulb neck codd with pear shaped glass stopper. Embossed 'SPENCER CONNOR... MANCHESTER' to front 'CONNORS PATENT...' & 'REDFEARN BROS/ BOTTLE MAKERS/ BARNESLEY' to rear. Very good. NR £60-80+. (GM)





**58. BLUE GLASS CYLINDER BOTTLE.** 7ins tall, **mid blue** glass cylinder. Heavily embossed 'W. HOLGATE/ MARKET RASEN' wooden stopper. A rare unpolished example. Good colour. NR £80-100+. (GM)

**59. LAUNCESTON CODD HAMILTON HYBRID BOTTLE.** 7ins tall, aqua glass embossed 'GEAKE BROS LATE/ J. S. EYRE & CO/ LAUNCESTON' to front 'CANNINGTON SHAW/ MAKERS/ ST HELENS' to rear. Exc/ Very good. NR £40-60+. (GM)



**60. WEST BROMWICH GREEN CODD BOTTLE.** 9.25ins tall, **deep olive green** glass standard codd bottle. Embossed 'P.A. GREEN/ QUEEN/ STREET/ WEST BROMWICH'. Exc/ Very good. NR £150-200+. (GM)



**61. OLDHAM GREEN LIP CODD BOTTLE.** 8.75ins tall, aqua glass **reliance patent codd** with **green lip**, embossed 'OLDHAM AERATED WATER CO LIMITED' with owl pict. t.m. to front 'RELIANCE PATENT/ SOLE MAKER/ DAN RYLANDS/ BARNESLEY'. Very good. NR £300-400+. (GM)



**62. CHAPMANS PATENT BOTTLE.** 7.25ins tall, aqua glass, 4 circular indents to shoulder, embossed 'BATEY & CO KINGSLAND RD' to front 'CHAPMANS/ PATENT/ BIRKENHEAD' & 'T. TURNER & CO/ MAKERS/ DEWSBURY' to rear. Good. NR £40-60+. (GM)



**63. BLUE GLASS GINGER BEER? BOTTLE.** 7ins tall, **cobalt blue** glass ginger beer bottle shape, embossed 'CRESSWELL & CO/ SMETHWICK' to front 'PLEASE/ SHAKE THE/ BOTTLE' to rear. Unpolished & heavily embossed. Very good. NR £120-150+.

**64. VALVE PATENT CODD BOTTLE.** 7.5ins tall, aqua glass, embossed 'THIS BOTTLE IS/ THE PROPERTY OF METROPOLITAN/ HOLLAND ST/ BRIXTON SW/ MINERAL WATER CO LD/ TO FRONT' 'PATENT RYLANDS VALVE 4 SOLE MAKERS DAN RYLANDS BARNESLEY' to rear. Very good. NR £150-200+. (GM)







**65. LEICESTER EARLY CODD BOTTLE.** 7.25ins tall, aqua glass embossed 'CLEAVER/CHEMIST/LEICESTER' to front 'CODDS/ PATENT/ 18/ LONDON S.E.' to rear. Very good - nay fabulous. NR £80-120+. (GM)



**66. A.I. PATENT BOTTLE.** 8.25ins tall, aqua glass embossed 'S. STOCKS/ ACCRINGTON' with plant pict. t.m. to front 'THE A.I. PATENT D. RYLANDS BARNESLEY' to rear. Very good. NR £40-60+.



**67. BEDFORD SYKES MACVAY PATENT.** 7.25ins tall, aqua glass 6 circular indents near base, glass marble stopper embossed 'JARVIS & CO/ BEDFORD' to front 'PATENT 1877/ SYKES MACVAY & CO MAKERS CASTLE FORD'. Very good. NR £40-60+.



**68. BARRETT & ELSERS PATENT BOTTLE.** 8ins tall, golden amber glass, rear handle internal screw stopper embossed to rear below handle 'TRADE MARK/ BARRETT & ELSERS LONDON'. Very good. NR £40-60+. (GM)



## Ginger beers.

**69. BARROW GINGER BEER BOTTLE.** 7.75ins tall, ch. t.t. black transfer 'THOMSON & SONS/ GINGER BEER BARROW'. Dandily dressed gent pict. t.m. 'A DANDY LION'. Cleland Pottery Co. An exceptionally rare offering - an all time 'classic' UK pictorial. Very good. NR £500-600+. (KB)



**70. ELGIN GINGER BEER BOTTLE.** 9.25ins tall to top of swing stopper ch. t.t. blue transfer 'SANG & CO/ ELGIN' castle pictorial. Buchan p.m. The all time 'classic' Scottish gem - rarely offered for sale! Very good. NR £300 - 400+. (IM)

**71. ROBERT HENDERSON GINGER BEER BOTTLE.** 8ins tall, ch. t.t. black transfer, black man pictured holding bottle & glass. Buchan p.m. 'ROBERT HENDERSON/ WESTOE BREWERY SO SHIELDS'. Very good. NR £80-100+. (KB)





**72. R. STORTHERT & SONS GINGER BEER BOTTLE.** 8ins tall, ch. t.t. **black** transfer 'BREWED/ GINGER BEER/ R. STORTHERT & SONS/ ATHERTON' bearded gent pictured. Buchan p.m. Meadowcroft's patent. Very good. NR £80-100+. (NL)

'G.T. SCOTT & COS FAMILY/ STOUT/ WALLSEND'. 'Father Tyne' pictorial t.m. Buchan p.m. Side lip flakes. NR £60-80+. (KB)



**73. WALLSEND FAMILY STOUT BOTTLE.** 8ins tall, ch. t.t. **black** transfer



**74. A.N. DODDS GINGER BEER? BOTTLE.** 8ins tall, ch. t.t. **pink** transfer 'A.N. DODDS/ WINE & SPIRIT MERCHANT/ OLD RED LION/ STORES/ CHURCH WAY N.S./ NTH & STH SHIELDS/ & TYNEMOUTH'. Buchan p.m. Fabulous strong print - extremely rare colour. Good. NR £60-80+. (KB)

**75. LAINGS WHISKY.** 6.75ins tall, ch. t.t. **black** transfer 'LAINGS/ BEN EWE/ WHISKY'. Buchanan p.m. with stopper. The scarce split size version. Very good. NR £30-40+. (KB)



**76. No lot**



OLD FASHIONED/ GEORGE THOMAS GINGER BEER/ TENBY'. Sailing ship pictured. (2) Very good. NR £30-40+.

**77. PAIR OF TENBY GINGER BEER BOTTLES.** 7.75 & 6.75ins tall, ch. all **tan** glaze, **black** transfer 'YE

**78. PAIR OF TENBY GINGER BEER BOTTLES.** Both 7ins tall, st. all white & st. all **tan** glaze, **black** transfer 'THOMAS'S/ GINGER BEER MANUFACTURED WITH/ PURE WATER/ TENBY'. (2) Very good. NR £30-40+.



**79. SKETCH'S GINGER BEER BOTTLE.** 7ins tall, **green** top. St. **black** transfer 'PURITY & EXCELLENCE/ SKETCH'S/ GREEN GINGER BEER JOHNSTON/ AND/ PEMBROKE DOCK'. Price Bristol p.m. Very good. NR £40-60+.



**80. SKETCH'S GINGER BEER BOTTLE.** 7ins tall, **blue** top. St. c.c. **black** transfer 'PURITY & EXCELLENCE/ SKETCH'S/ GREEN GINGER BEER JOHNSTON/ AND/ PEMBROKE DOCK'. Very good. NR £40-60+.



**81. PLYMOUTH GINGER BEER BOTTLE.** 7ins tall, st. **green** top, **black** transfer 'GREENSTONE GINGER BEER/ SAM HORNSBY & CO PLYMOUTH'. Priest Cardiff p.m. Good. NR £40-60+.



**82. STALYBRIDGE GINGER BEER BOTTLE.** 6.75ins tall, st. **blue** top, **black** transfer 'J. HEGINBOTHAM WINE & SPIRIT/ MERCHANT/ STALYBRIDGE'. Bourne Denby p.m. Very good. NR £40-60+.



**83. EDINBURGH STOUT BOTTLE.** 8.75ins tall, ch. t.t. s.s. **black** transfer 'J & G COCKBURN'S SPECIAL STOUT/ FOR INVALIDS/ 250 CHARLOTTE ST/ CORNER OF 135 PRINCESS ST/ EDINBURGH' cockerel pictured. Buchan p.m. Very good. NR £30-40+.

**84. HUNTLY GINGER BEER BOTTLE.** 8.5ins tall, ch. t.t. s.s. **black** transfer 'SMITH AND RIDDELL GINGER BEER/ HUNTLY' castle pict. t.m. Tiny lip nibbles, overall generally. Front hairline - but exceptionally rare. NR £50-60+. (IM)



#### Inks.

*BBR will be offering the extensive Michael Harris collection of inks over the next 3 years - a selection in every upcoming auction. Plenty to look out for!*

#### 85. TEA

**KETTLE INK.** 2.25ins tall, **cobalt blue** glass waisted octagonal shape, upturned spout with ground lip finish, minus fittings. Very good. NR £170-220+.

**86. TEA KETTLE INK.** 2.25ins tall, **opaque light pastel green** glass, waisted octagonal shape upturned spout with brass lift up cap fitting. Very good. NR £170-220+.







**87. TEA KETTLE INK.** 2ins tall, **deep purple** glass tapered square form with

bevelled corners upturned spout with ground lip. Very good. NR £150-200+.

**88. TEAKETTLE INK.**

2.5ins tall, **opaque light pastel blue** glass, pear shape form with curved body segments, upturned spout with brass lip ring (missing the lid). Very good. NR £170-220+. (NL)



**89. TEA KETTLE INK.** 3ins tall,

**opaque white** glass tapering octagonal shape with raised floral design picked out in **yellow & gold** plus **gold** decoration to top, upturned spout with ground lip. Very good. NR

£170-220+.



**90.**

**TEAKETTLE**

**INK.** 2.25ins tall, **light**

**olive green** glass, tapering fluted octagonal shape upturned spout with brass lip ring (missing lid). Unusual thin (early) form? Very good. NR £120-150+. (NL)

**91. TEAKETTLE INK.**

2.25ins tall, **deep purple** glass tapering octagonal form with straight sides, upturned spout with **white** metal lift up cap fitting. Very good. NR £120-150+.



**92. TEA KETTLE INK.** 2.25ins tall, ceramic tea kettle inkwell, tapering circular form **beige & dark blue** glaze, with raised florets (*small chip to one*). NR £120-150+.



**93. TEA KETTLE INK.**

2.5ins tall, ceramic inkwell in **mustard** glaze, tapered circular form. Impressed 'MORREL/ LONDON' with diamond registration mark for 1883, pen rests to top. Very good. NR £40-60+.



**POSTAL BIDDERS**

Postal bidders must satisfy **themselves** lot/ s meet their condition standards. For a more detailed inspection/ personal assessment please tel. BBR, give lot numbers, call back later to speak with AB.



**94. TEAKETTLE INK.** 2.25ins tall, **amber glass** tapering circular form with raised diamond point design upturned spout with brass lift-up cap fitting, brass medallion to top embossed 'MORDAN & CO LONDON' with crown. An exceptionally rare tea kettle design. Very good. NR £250-300+.

**95. TEAKETTLE INK.** 2.5ins tall, **opaque white** glass, tapering octagonal form with upturned spout, with brass lift-up cap fitting. Very good. NR £80-120+. (NL)



**96. TEA KETTLE INK.** 2.5ins tall, freeblown clear glass tapered shape with two upturned spouts. Pontil scar to base. Very good. NR £40-60+.

**97. BELLOWING MAN INKWELL.** 2.5ins tall, unusual large size, shiny **brown glaze**, bewigged gents head with gaping mouth. Base impressed with indistinct lettering? Very rare. Good. NR £60-80+. (DD)



## ABSENTEE BIDDING FORMS

Following a reneged bid BBR insists **ALL** Postal Bid sheets **MUST LIST FULL c.c. details** otherwise bids **NOT ENTERED!**



**98. SALT GLAZE INKWELL.** 1.25ins tall, 4ins long, oblong shape in **tan salt glaze**. Good. NR £60-80+. (DD)



**99. INKWELL.** 2ins tall, **light purple/ amethyst** glass, floral lobed shape with flared lip. Pontil scar to base. Very good. NR £80-100+.



**100. PITKIN TYPE INKWELL.** 1.5ins tall, **dark olive green** glass circular form with wide flared lip. Pontil scar to base. Very good. NR £60-80+.



**101. SNAIL INKSTAND.** 4.25ins tall to top of cast iron stand, clear glass snail shape inkwell. Some damage to hole section. NR £30-40+.

**102. INKWELL.** 3.75ins tall, **turquoise** glass, tall octagonal form with tooled lip. Very good. NR £80-100+.





**103. BLUE COTTAGE INK.** 2.75ins tall, **mid blue** glass cottage shape ink, windows & door to front, tiled roof with stepped chimney, water butt to side, pen recess to rear. Base embossed 'CHANDLER & CO'. Very good. NR £250-300+.

**104. FRENCH INKWELL.**

2.75ins tall, **cobalt blue** glass, oblong stepped form. Sheared lip 'DEPOSE' to front 'PARIS' one side 'NA' to the other side. Good. NR £40-60+.



**105. WYNYARD INK.** 2.5ins tall, **cobalt blue** glass, circular shape with sheared lip. Embossed 'WYNYARD'. Exceptionally rare. Very good. NR £120-150+.

**106. CIRCULAR SWIRLY INK.** 2.25ins tall, aqua glass with **dark brown smokey** swirls, embossed 'WALKDENS INK LONDON'. One of the finest embossed swirly inks I've ever seen. Very good. NR £80-120+.



**107. BOAT SHAPE SWIRLY INK.** 2ins tall, **green** glass with **red/ brown** swirls all over, sheared lip embossed letter 'M' (Morrel) both ends. Very good. NR £40-60+.



**108. CYLINDER INK?**

3.5ins tall, aqua glass cylindrical form with graduated marks front & rear. Numbered 1 to 12 in Roman numerals, two diamond studs each side. 'ED & CO LONDON' to base. Sheared lip. Good. NR £60-80+.



**109. PAIR OF INKS.** 3ins tall, one **mid olive green**, one **amber/ green** with **red** hue, oval shape with off set neck. (2) Good. NR £40-60+.



**110. PAIR OF HYDES INK BOTTLES.** 6 & 5.5ins tall, **cobalt blue** glass

with pouring lip to neck both embossed 'HYDE/ 61 FLEET ST LONDON'. (2) good. NR £30-40+.





# Miniatures.

## 111. MINIATURE FLAGON.

2.75ins tall, t.t. **black** transfer, handle to rear 'DOULTON/ LAMBETH BOTTLES FOR/ BREWERS &/ DISTILLERS/ MADE SPECIALLY STRONG BY/ PATENT PROCESS' complete with stopper. Very good. NR £40-60+.



## 112. MINIATURE

**HAMILTON BOTTLE.** 4ins long, aqua glass sheared lip embossed 'SPLIT SODA'. Good. NR £40-60+.

# Cream pots.

## 113. CHISWICK

**CREAM POT.** 4ins tall, **blue** top, **white** glaze below, handle to rear, **black** transfer 'J. CLARKE AND SONS DAIRY AND CREAMERY/ 46 HILL RISE RICHMOND AND AT/ KEW GARDENS AND/ CHISWICK' cow & milkmaid pictured. Some restoration but this remains one of the tip top

South East cream rarities. NR £120-150+.

## 114. DEVONSHIRE CREAM

**JAR.** 3ins tall, 3.5ins diam, **mustard** glaze, **black** transfer 'REAL DEVONSHIRE CREAM FROM/ DUKE DYKES STORES'. Extremely rare large sized squat. Very good. NR £30-40+.



## 115. MORETON-IN-MARSH CREAM POT.

3.75ins tall, **blue** top, **blue** transfer 'FARMERS DAIRY & SUPPLY ASSCN LTD/ PURE/ CREAM/ MORETON-IN-MARSH'. Very good. Very good. NR £60-80+.



## 116. DERBY CREAM POT.

4.25ins tall, off **white** glaze, **black** transfer 'BURNASTON CREAMERY GILBERTS/ PURE RICH/ CREAM/ DERBY'. Very rare regional pot. Couple of tiny lip slivers. NR £30-40+.



## 117. MUSWELL DAIRY CREAM POT.

4ins tall, **dark blue** top, **black** transfer 'MUSWELL AVENUE DAIRY/ P.M. ADAMS/ 1D ALLOWED ON JAR'. Exc. NR £80-100+.



## 118. HALIFAX LARGE

**CREAM POT.** 6.25ins tall, tan top, lower off **white** glaze, **black** transfer 'WEBSTERS/ FRESH DAIRY CREAM G. WEBSTER & SON/ PROVISION MERCHANTS & HALIFAX & HIPPERHOLME'.

Never seen one this size. Very good. NR £60-80+.

# EMAILS BIDS

Email bids to: [sales@onlinebbr.com](mailto:sales@onlinebbr.com) add full name, address & credit card details, or fax: 01226361561.

**YOU MUST ALSO POST BID SHEET EVEN IF ARRIVING AFTER THE SALE**



**119. TEIGNMOUTH CREAM POT.**

2.25ins tall, **off white** glaze, **black** transfer 'FROM/ COLEMANS DAIRY/ REGENT ST/ TEIGNMOUTH'. A considerable rarity. Very good. NR £40-60+.

**124. SLEAFORD CREAMERY.**

4.25ins tall, **blue** top, **blue** transfer 'SLEAFORD CREAMERY/ PURE CREAM/ MANUFACTURERS BY/ SLEAFORD DISTRICT PRODUCE/ SUPPLY ASSOCIATION LIMITED SLEAFORD'. Price Bristol p.m. Rarely offered. Very good. NR £40-60+.



**120. G.N.R. RAILWAY CREAM POT.** 3ins tall, **dark brown**, **black** transfer 'REFRESHMENT DEPT/ G.N.R.'. A scarce railway pot. Very good. NR £30-40+.



**125. W. WARREN CREAM POT.** 4.5ins tall, **tan** glaze, **black** transfer 'W. WARREN CREAMERY WILLOW BANK FARM LOWER BROUGHTON/ STERILIZED/ MILK'. Regional scarcity. Very good. NR £30-40+.



**121. GOLDEN PASTURES CREAM POT.** 4.25ins tall, **blue** top, **blue** transfer 'GOLDEN PASTURES TEA CREAM/ SOMERSET DORSET & DEVON DAIRY CO CHARD'. Extremely rare variant. Very good. NR £30-40+.

**126. BOURNEMOUTH CREAM POT.**

3.75ins tall, **blue** top, vivid deep **blue** transfer 'BOURNEMOUTH BOSCOMBE HETTYS DAIRIES/ CHARMINSTER RD & WESTBOURNE. Very good. NR £60-80+.



**122. STREATHAM CREAM POT.** 4.5ins tall, **off white** glaze, **black** transfer 'WILLIAMS CREAMERIES LTD/ RICH CREAM/ STREATHAM'. Very good. NR £30-40+.



**123. IDOLICE CREAM POT.** 4.75ins tall, **off white** glaze, **black** transfer 'IDOLICE/ CREAM THE NEW DELICACY/ GOOD FOR THE VOICE'. Skey Tamworth p.m. imp. to base. Small base flake, otherwise good. NR £30-40+.



**127. PAIR OF TUNBRIDGEWELLS CREAM POTS.** 4.25ins & 3ins tall, **dark brown** glaze, **black** transfer 'JOHN BROWNS/ DAIRIES/ TUNBRIDGE WELLS'. Tallest with rim hairline. (2) Good. NR £40-60+.

**AFTER SALE PRICES REALISED**

BBR will pop sale results onto its website: [sales@onlinebbr.com](mailto:sales@onlinebbr.com) alternatively you can find them on Facebook: **BBR Auctions** or email BBR for a pdf: [sales@onlinebbr.com](mailto:sales@onlinebbr.com)

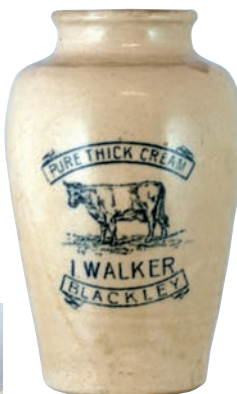




**128. CARMARTHENSHIRE CREAM POT.** 3.75ins tall, **pale blue glaze, black transfer** 'ST CLEARS FARMERS/ BUTTER/ FACTORY COY/ LIMITED/ ST CLEARS/ CARMARTHENSHIRE'.

Britians only blue bodied cream? Very good. NR £30-40+.

**129. BLACKLEY CREAM POT.** 6.25ins tall, **off white glaze, black transfer** 'PURE THICK CREAM/ 1 WALKER/ BLACKLEY' full cow pictured. **Exceptionally rare large size.** Very good. NR £60-80+.



**Kitchenalia**

**130. DAIRY BOWL.** 6ins tall, **blue & white floral design** with 'H.W. CASE & SONS LTD/ ESTABLISHED 1826/ MILK CONTRACTORS & DAIRY MEN/ 10 & 17 OXFORD ST/ COTHAM/ 41 GLOUCESTER RD/ BISHOPTON/ NORTH VIEW ETLOE RD/ WESTBURY PARK' in **blue** lettering to front. A. Eros Warwick England p.m. to base. Very good. NR £300-400+.

## SALE DAY FLOOR BIDDERS

all items sold **AS SEEN**. Bidders must ensure lot/s meet personal condition standards.



**131. STOURBRIDGE PEPPER SAUCE BOTTLE.** 11.75ins tall, mid aqua glass, **bodily embossed with grapes & vines all around faceted neck.** Diamond registration mark to base. With stopper. Very good. NR £250-300+. (GM)



**132. O.T. LIMITED SAUCE BOTTLE.** 11.5ins tall, **bright green glass, square bodied with faceted neck embossed** 'THE PROPERTY/ OF/ O.T. LTD/ LONDON'. Possibly still one of only 2 recorded? Very good. NR £60-80+. (GM)



**133. AUSTRALIA MAP BASKET WEAVE FLASK.** 9.25ins tall, aqua glass all over **basket weave embossed with map of Australia space (for label).** Diamond Registration to base. Good. NR £30-40+.





**134. TWO GRAPE EMBOSSED FLASKS.** 9 & 6ins tall, aqua glass round shouldered flasks embossed with grapes & vines. The largest with diamond registration mark to base. (2) Good. NR £40-60+.



**135. W R HATTON & SONS LTD FLAGON.** 13.25ins tall, blue top, lower off white glaze, shoulder with impressed lettering 'W R HATTON & SONS LTD WORMWOOD SCRUBS/ LONDON W10' with 'TRUE BLUE' in blue lettering below. price Bristol p.m. A fabulous piece! Very good. NR £60-80+. (GM)



**136. TONGUE PRESS.** 9ins tall, white glaze, black transfer 'BEECHWOOD/ FINEST/ TONGUE' with 'INSTITUTE OF HYGIENE ROYAL CHARTER CERTIFICATE AWARDED PLYMOUTH' etc. below. Some crazing/ wear but generally good. NR £40-60+. (GM)



**137. SLOPS BUCKET.** 9.75ins tall, blue & white willow pattern ceramic bucket with cane handle. Very good. NR £30-40+. (GM)



**138. KNIFE CLEANER.** 15.5ins tall, wooden cylindrical knife cleaner, wood & metal handle on cast iron base. White glazed oval plaque 'WARRENS/ SOLE MANUFACTURER/ THE PREMIER/

W.B... ROTARY KNIFE CLEANER'. Very good. NR £60-80+. (GM)

**139. GRIMWADES BLANC-MANGE & JELLY MOULD.** 4.75ins tall, 7ins diam, white glaze green pictorial transfer both sides with ads for 'QUICK COOKER' base with "PARAGON" BLANC-MANGE & JELLY MOULD' transferred. Very good. NR £30-40+.



**140. LORD MAYORS PUDDING BASIN.** 4ins tall, 6.75ins diam, white glaze black transfer 'THE LORD MAYOR'S/ PATENT/ PUDDING BASIN' with coat of arms & directions below. Small nick to rim otherwise excellent. NR £30-40+.

### EITHER OR BIDS

For absentee bidders on a tight budget BBR operates an 'either' 'or' option. Bid '£X' on one item, '£Y' on another if unsuccessful. We can even carry amounts over. **BUT** make instructions simple and clear! If in doubt email AB.





**141. LARGE MUSTARD JAR.** 6.75ins tall, **white** glaze **black** transfer 'DIJON/ GREY-POUPON' with coat of arms to front 'HORS CONCOURS PARIS 1900



MEMBRE DU JURY' below rim. Never seen this large size before? Very good. NR £20-30+.

**142. GOLDEN SYRUP JAR.** 4.5ins tall, **white** glaze jar, **blue** transfer 'GOLDEN SYRUP/ FROM SAISON & SIMPKIN'. Unusual, early, jar. Very good. NR £20-30+.



**143. LONDON ZOOLOGICAL SOCIETY BEAKER.** 4ins tall, **white** glaze **black** transfer, recylning lion pictured 'ZOOLOGICAL SOCIETY/ OF LONDON 1829'. Hairlines & crazing but a rare early piece. NR £20-30+.



**144. GARANTISEPT BEAKER.** 4.25ins tall, **white** glaze, **green** transfer 'GARANTISEPT/ BRITAINS/ FIRST LINE/ OF/ DEFENCE/ AGAINST/ DISEASE' soldiers behind row of cannons pictured. Despite considerable restoration this is an exceptional, unique, item. NR £20-30+.



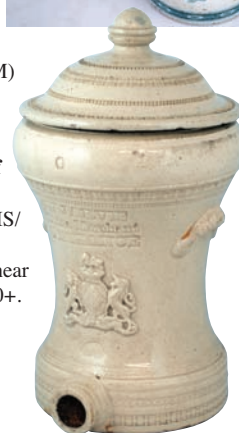
**145. No lot**

**SALE DAY FLOOR BIDDERS**  
ALL items sold **AS SEEN - very firm, no returns.** Bidders must ensure lot/s meet personal condition standards - inspect thoroughly.

**146. PAIR OF CERAMIC WEIGHTS.** Tallest 5.25ins, one **white** glazed **black** print 'IMPERIAL/ 7LB'. Smaller **white** glaze, **green** tranfer 'IMPERIAL 2LB' to top 'W & T AVERY/ BIRMINGHAM' to base. (2) NR £30-40+. (GM)



**147. PENZANCE WATER FILTER.** 15ins tall to top of domed lid, **off white** glaze cat of arms to front impressed 'W. JARVIS/ CHINA MERCHANT PENZANCE'. Bung hole near base. Lid chips. NR £50-60+. (GM)



**148. NORFOLK SCALES PLATE.** 8.25ins diam, **white** glaze, **black** transfer 'COCKSEDE & CO/ SCALE MAKERS/ IPSWICH/ LOWESTOFT, YARMOUTH/ LYNN'. Very good. NR £30-40+.



**149. ADVERTISING PLATE.** 10ins diam, **white** glaze, **red** transfer 'THE BEST DIGESTIVE SAUCE AFTER DINNER IS THIS WEEK'S FUN'. Hot air balloon pictured. Very good. NR £30-40+.



**150. CREMEX VASE.** 7.75ins tall, **cobalt blue** glass bottle with finger grip indents, embossed "CREMEX"/ SHAMPOOING/ VASE'. A great, uniquely shaped, blue glass form. Very good. NR £30-40+. (GM)





- 151. TOILET PLAQUE.**  
3.25ins across, **white** glaze oval plaque, **black** transfer 'DOULTON & CO LAMBETH - LONDON/ PULL AND LET GO/ PATENT SYPHON FLUSHING CISTERN'.

Very good. NR £20-30+. (GM)

**152. BURNLEY TOILET PLAQUE.**

3.75ins across, **white** glaze oval plaque 'AWARDED BRONZE MEDAL OF/ THE SANITARY INSTITUTE/ BIRMINGHAM 1898/ J. DUCKETT & SON LTD/ MANUFACTURERS/ BURNLEY' Very good. NR £20-30+.



**153. EARLY TOILET BOWL.**

17ins tall, **blue & white** floral design 'THE CLOSET OF THE CENTURY' to rim 'G JENNINGS SANITARY PATENT ENGINEER PALACE WHARF/ STANGATE LAMBETH/ LONDON'. Transferred inside bowl. Hairline running up from base. A stunning loo all the same! NR £200-300+.



**154. EARLY TOILET BOWL.** 16.5ins tall, **bluey grey** all over assymetric transfer inside & out. Inside 'THE "AXIS" VITRINA WARE' & to rear 'Patent after flush chamber'. Good condition. NR £200-300+.



**154A. ASTON TRANS-FERRED**

**SINK.** 25 by 17ins, stunning dark blue/ grey floral transferred sink. Below the 2 taps a circular transfer 'W. COTTERILL/ ASTON/ SANITARY/ DEPOT/ 36 HIGH ST. ASTON'. Original taps & plug on chain. Some repairable (?) hairlines. NR £150-200+. (GM)



**MORE toiletsd, sinks & other 'lootiques' in BBR's 'Winter Wonders' auction in November.**

**155. No lot**

**Miscellaneous.**

**156. CANADIAN CROWN CORK OPENER.** 3.5ins long, painted metal 'O'KEEFE'S PILSNER/ LAGER/ TORONTO' with bottle pictured. NR £20-30+.



**157. No lot**

**158. LARGE TEA CADDY CANNISTER.** 17.5ins tall, **green** with **coloured** coat of arms to front. Good. NR £30-40+.



**follow BBR Auctions on Facebook**

Auction results, News & Updates regularly added just befriend us!





**159. NIGHT LIGHT.** 3.5ins tall, harlequin shape night light in **red/amber** glass. Very good. NR £20-30+.

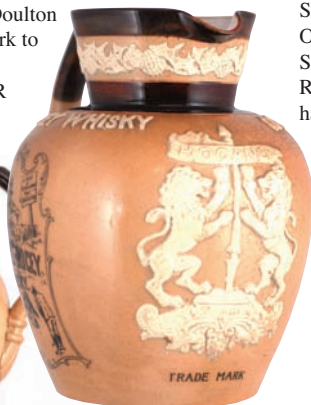
**160. NIGHT LIGHT.** 3.5ins tall, **cobalt blue** glass pontilted freeblown night light, flared lip with criss-cross pattern. Very good. NR £20-30+.



**161. NIGHT LIGHT.** 3.5ins tall, green glass criss-cross pattern with 'GR' in large initials. Very good. NR £20-30+.

#### Pub jugs.

**162. COL. BOGEY WHISKY JUG.** 7.5ins tall, **brown & tan** salt glaze jug 'COL. BOGEY WHISKY' in **white** raised lettering twice round shoulder, coat of arms to front 'ROGANO' t.m. Transferred both sides with golfing scenes 'COLONEL BOGEY/ WHISKY'. Doulton Lambeth impressed mark to base. A fabulous, rare, offering. Very good. NR £800-1,200+.



**163. DUNIVA WHISKY JUG.** 8.25ins tall, **tan** salt glaze **brown** transfer 'THE MILE END DISTILLERY COY VERY OLD/ DUNIVA/ HIGHLAND WHISKY'. Doulton Lambeth impressed mark to base. Another rare offering, all time 'classic'. Hard to detect minor lip hairline. NR £500-600+.



**164. BUCHANANS PUB JUG.** 7.5ins tall, body **white** glaze, multicoloured transfer to front (hunting scene) 'BUCHANANS' below rim twice 'SCOTCH WHISKY' either side. "SPECIAL" (RED SEAL) below. Rarely seen for sale in the U.K. Very good. £400-500+.



**165. GAELIC OLD SMUGGLER PUB JUG.** 7ins tall, **mustard** glaze, **black** transfer 'CRAIGELLACHIE - GLENLIVET DISTILLERY/ SCOTLAND' picture of distillery to front 'GAELIC/ OLD/ SMUGGLER WHISKY... STIRLING SCOTLAND' both sides. Royal Doulton p.m. Faint hairline & some crazing gives it considerable character. NR £250-300+.







**166. WHYTE & MACKAY'S PUB JUG.** 6.5ins tall, stoneware jug, **green** top lower **off white** glaze **sepia** transfer 'WHYTE & MACKAY'S/ "SPECIAL" WHISKY/ GLASGOW' to both sides. Port Dundas p.m. Very rare. Good. NR £60-80+.

**167. ROGERS CHAMPION ALE PUB JUG.** 5ins tall, **white** glaze, **black** transfer 'SAY/ ROGERS' CHAMPION' to front. Knight in armour holding shield pictured both sides '31/ HONOURS LONDON/ 1912-1933' twice to rear. Classic & quality beer jug. Very good. NR £80-100+.



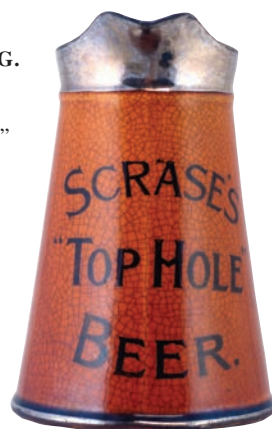
**168. CLAYMORE PUB JUG.** 4.75ins tall, **pink & blue** glaze 'CLAYMORE/ SCOTCH WHISKY' with crossed Claymores 'RARE OLD' above both sides. Very good. NR £60-80+.



**169. HIGHLAND QUEEN PUB JUG.** 5.5ins tall, **yellow** glaze, **black** transfer 'HIGHLAND/ QUEEN/ SCOTCH WHISKY/ QUEEN OF SCOTS' both sides. 'MADE IN ENGLAND FOR MACDONALD & MUIR LEITH' painted to base. Some restoration? NR £40-60+.



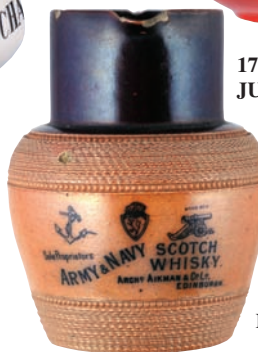
**170. SCRASE'S PUB JUG.** 6.5ins tall, **mustard** glaze, **silver** rim, **black** transfer 'SCRASE'S/ "TOP HOLE" BEER'. Quite a rare item. Good. NR £60-80+.



**171. LOCH CORRIE PUB JUG.** 4ins tall, **red** glaze, **black** transfer "LOCH CORRIE"/ SCOTCH/ WHISKY' both sides. Lip restoration? Rare. NR £40-60+.



**172. ARMY & NAVY PUB JUG.** 5.75ins tall, stoneware jug, **brown** top, lower **tan** salt glaze, **black** transfer 'SOLE PROPRIETORS/ ARMY & NAVY SCOTCH WHISKY/ ARCHD ASKMAN & CO LD/ EDINBURGH'. Rare early jug. Rim chips. NR £30-40+.



**173. WHITBREADS PUB JUG.** 6ins tall, **pink & brown** glaze 3 way pouring rim. **Black & white** transfer 'WHITBREADS/ BOTTLED BEERS' both sides. Hind pict. t.m. to front. Good. NR £40-60+.





**174. IND COOPES PUB JUG.** 5.25ins tall, **white** glaze, **blue** top & handle, **green & red** transfer 'ASK FOR/ IND COOPES/ BURTON ALES', red pict. t.m. both sides. Minton's p.m. Good. NR £30-40+.



**177. MY QUEEN WHISKY JUG.** (WG pg 180) 7.75ins tall, mallet shape **tan** neck, **black** transfer 'MY QUEEN' to shoulder coat of arms to rear 'JUBILEE 1837-1887'. Some restoration. NR £200-300+. (AB)



Whisky  
jugs



**175. JAMES BUCHANAN WHISKY JUG.** (WG pg 34) 8ins tall, **tan** neck handle to rear, **brown/ sepia** detailed transfer, Big Ben & Houses of Parliament 'JAMES BUCHANAN & CO/

**178. MY QUEEN WHISKY JUG.** (WG pg 180) 8.5ins tall, mallet form jug all **white** glaze, **brown**



transfer 'THE CREAM OF/ HIGHLAND WHISKIES' to shoulder. Portrait of Queen Victoria to front "MY QUEEN/ JUBILEE BLEND". Coat of



arms to rear 'THOM & CAMERON LIMITED/ GLASGOW'. Port Dundas impressed p.m. Professional neck repair. £150-170+. (Ex CM collection)

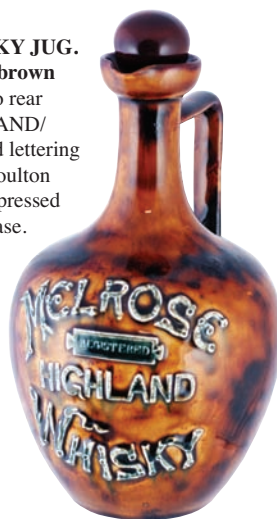
SPECIAL SCOTCH WHISKY/ BY APPOINTMENT SUPPLIERS OF SCOTCH WHISKY/ TO THE/ HOUSE OF COMMONS'. Port Dundas p.m. The all time 'classic' so rarely offered. Very good. NR £500-600+.

**176. THE GREYBEARD WHISKY JUG.** (WG pg 117) 9ins tall, all **tan** glaze "THE GREYBEARD"/ OF/ THE ISLAY BLEND WHISKY'. Greyhound pict. t.m. Port Dundas p.m. Lip chip. NR £500-600+. (AB)



**179. MELROSE WHISKY JUG.** (WG pg 29) 9.25ins tall, **brown** mottled glaze handled to rear 'MELROSE/ HIGHLAND/ WHISKY' in raised lettering with stopper. Doulton Lambeth impressed mark to base.

Very good. NR £170-220+.







**180. BIG BEN WHISKY JUG.** (WG pg 51) 7ins tall, **green & brown** mottled glaze applied crown shape cartouche 'BIG BEN SCOTCH WHISKY TEN YEARS OLD' in raised lettering with stopper. Royal Doulton impressed base mark. Very good. NR £60-80+.

**181. ARTWARE WHISKY JUG.** 9.75ins tall, cylindrical shape, **dark blue** glaze, applied Art Nouveau style floral design. 'SCOTCH' in raised lettering to shoulder. Doulton Lambeth impressed p.m. base mark. Very good. NR £40-60+.



**182. DEWARS THE WHISKY OF HIS FOREFATHERS WHISKY JUG.** (WG pg 55) 11ins tall, **dark green** top lower **tan** salt glaze 'DEWARS PERTH WHISKY... BY ROYAL WARRANT TO HIS MAJESTY THE KING'. Royal Doulton impressed base mark. Very good. NR £80-120+.



**183. LIVERPOOL AULD LANG SYNE WHISKY JUG** (WG pg 15) 8ins tall, **tan** neck, pouring lip, rear handle, 3 men sat at table imbibing verse above. 'AULD LANG SYNE' transferred to rear with 'T. F. ASHE & NEPHEW... LIVERPOOL' impressed in **sepia**. Scarce shape - even better with rear wording! Very rare. Very good. NR £80-120+.



**184. AULD LANG SYNE WHISKY JUG.** (WG pg 15) 7ins tall, **tan** neck handle to rear 3 men sat at table drinking verse above to front 'AULD LANG SYNE/ T.F. ASHE & NEPHEW/ ATHERTON STREET/ LIVERPOOL' to rear. Very good. NR £80-100+.



**185. AULD LANG SYNE WHISKY JUG.** 4.75ins tall, flattened shape **pale green** top handle to rear 'FOR/ AULD LANG/ SYNE/ STERLINI/ WHISKY'. Very rare. Very good. NR £60-80+.



**186. CONTEMPTIBLE LITTLE ARMY MINI WHISKY JUG.** 4.5ins tall, **tan** top handle to rear WW1 kilted soldier pictured 'HERES A HEALTH TO THE CONTEMPTIBLE LITTLE ARMY/ GOD SAVE THE KING'. Very good. NR £30-40+. (KB)



**187. RODERICK DHU WHISKY GLASS.** 5ins tall, thistle shape in clear glass acid etched 'RODERICK DHU OLD HIGHLAND WHISKY/ DISTILLERS WRIGHT & GREIGG GLASGOW'. Good. NR £20-30+.





**188. DOULTON WHISKY BARREL.**

12.5ins tall, **pale green, mid green & brown** salt glaze with lots of raised decoration, leaves & berries to central band with 'I. WHISKY' in **pale green** lettering to

front. Bung hole near base. Doulton Lambeth impressed mark to base. Superb artware whisky item. Very good. NR £350-400+.

**189. COBALT BLUE GLASS WHISKY BARREL.**

15ins tall, **cobalt blue** glass barrel with raised rings above & below & various facets. Crude bung hole near base. A truly stunning piece of **cobalt** glass - never seen another. Very good. NR £120-150+.



**190. LAUCHLAN ROSE & CO WHISKY BOTTLE.**

10.5ins tall, **deep golden amber** glass, bodily embossed with thistles & ears of barley. Embossed 'LAUCHLAN ROSE & CO/ LEITH' with 'RD207382' near base. Very good. NR £120-150+.



**191. PETER MACKENZIES WHISKY TIN SIGN.**

12 by 9.5ins, **multicoloured** tin sign, stag & deer pictured mountain in background 'PETER MACKENZIES WHISKY/ "FROM THE HEATH COVERED MOUNTAINS OF SCOTIA I COME"/ THE REAL MACKENZIE'. Some surface marks to r/ hand bottom corner otherwise in exceptional condition! NR £40-60+. (AB)



**192. GLEN SPEY PRESSED TIN SIGN.**

23 by 15ins, 'GLEN - SPEY/ POT STILL/ SCOTCH WHISKY' in raised lettering whisky still pictured 'W & A GILBEY' below. Some surface rust spotting & general wear. NR £30-40+.

**Ye Olde Cheshire Cheese items**



**193. YE OLDE CHESHIRE CHEESE WHISKY JUG.**

8.25ins tall, **brown** top lower **tan** salt glaze, **brown** transfer 'YE OLDE CHESHIRE CHEESE/ B A MOORE & SON' premises pictured. Doulton Lambeth imp'd base mark. This is a very rare variant to the norm! Very good. NR £40-60+.



**194. YE OLDE CHESHIRE CHEESE LARGE TANKARD.**

6.5ins tall, **brown** top, lower **tan** salt glaze, transferred 'YE OLDE CHESHIRE CHEESE/ B A MOORE & SON' premises depicted. Doulton Lambeth p.m. impressed to base. Very good. NR £30-40+.



# **195. YE OLDE CHESHIRE CHEESE PAIR OF**



**TANKARDS.** 4.75 & 4.5ins tall, **brown** top lower **tan** salt glaze premises pictured to front 'YE OLDE/ CHESHIRE CHEESE/ 1667' to both sides on one 'YE OLDE CHESHIRE CHEESE' & 'BA MOORE & SON/ FLEET STREET/ LONDON' to the other (with hairline). (2) NR £20-30+.

# **196. YE OLDE CHESHIRE CHEESE GROUP.**

Includes ashtray 4ins diam & jug 2.75ins tall, **plus** pepper pot 4ins tall, all **brown** & **tan** salt glaze Doulton Lambeth impressed marks. (3) Very good. NR £20-30+.



# **197. YE OLDE CHESHIRE CHEESE GROUP.**

Includes double pourer lip jug, 2 small dishes one with blue interior tallest 2.75ins. All brown & tan salt glaze. Doulton Lambeth impressed marks. (3) Good. NR £20-30+.



# **198. YE OLDE CHESHIRE CHEESE GROUP.**

Includes small jug, small jar with **blue** interior & small dish. Tallest 2.75ins. All **brown** & **tan** salt glaze. (3) Good. NR £20-30+.



## **CONDITION - help us to help you!**

If you spot condition differences (faults, repairs) which we have not please advise BBR staff. We announce amendments prior to the sale start.

# **199. YE OLDE CHESHIRE CHEESE GROUP.**

Includes plate 10.75ins diam, **plus 56 postcards** & book & menu & wine list. Good. NR £20-30+.



## **Clay pipes.**

### **200. MEERSCHAM PIPE.**

9ins long, large Meerscham bowl with brass metal lid with stag in relief. Pipe stem with mother of pearl decoration. Good. NR £20-30+.



# **201. GROUP OF CLAYPIPES.**

Includes black man's head, crop & claw, motoring girl complete pipe, tree stump with alligator. 'GORDON KHARTOUM' complete pipe & ladies head pipe. (6) NR £20-30+.



## **Matchstrickers & coasters**

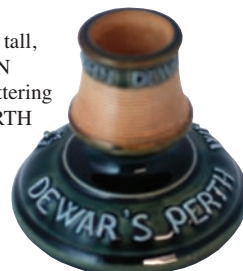
### **202. CALEY'S MATCHBOX HOLDER/ ASHTRAY.**

4ins tall, **white** glaze with coloured transfers 'CALEY'S', coat of arms to matchbox holder, pictures of Caley's bottles to ashtray, ginger beer, soda water, tonic water & dry ginger ale. Matchbox holder hairline to & chip under base. Empire works Stoke on trent p.m. NR £40-60+.



### **203. DEWARS MATCHSTRIKER.**

3.75ins tall, **green** & **tan** salt glaze 'JOHN DEWAR & SONS', raised lettering to matchwell 'DEWARS PERTH WHISKY' round base. Doulton Lambeth imp'd mark. Very good. NR £30-40+.







**204. WHITBREAD MATCHSTRIKER.**

3.75ins tall, **pink & white** glaze with bottles either side of matchbox holder 'ASK FOR/ A SMALL WHITBREAD'S STOUT IN BOTTLE' & 'WHITBREADS ALE IN BOTTLE' around

base. Good. NR £50-60+.

**205. CALEY'S MATCHSTRIKER.** 4.75ins tall, **white & blue** glaze with **black** transfer 'CALEY'S TABLE WATERS' front & rear coat of arms 'BY ROYAL WARRANT TO HIS MAJESTY THE KING' to one end Prince of Wales plumes to the other. Hairline to matchwell. NR £30-40+.



**206. THORLEY'S FOOD MATCHSTRIKER.** 1.75ins

tall, 5ins square at base, pyramid shape, **white** glaze, **black** transfer 4 detailed pictorial scenes to sides 'THORLEYS FOOD' with pig pictured one side 'VITUM POWDER FOR HORSES' to another etc. James Green & Nephew London p.m. Very good. NR £60-80+. (GM)



**207. ALLSOPPS COASTER.** 5.75ins

diam, **white** glaze 'ASK FOR ALLSOPP'S' with coloured beer label facsimilie in **red, black & yellow**. Gold medals either side. Slight fading. NR £40-60+.



**208. BASS COASTER.** 5ins diam, **green & white** glaze 'BASS IN BOTTLE' with **red** triangle t.m. Mintons p.m. Very good. NR £40-60+.



**209. SALT & COS COASTER.** 6ins diam,

**white, pink & red** glaze with **black** transfer 'GOLD MEDAL INTERNATIONAL HEALTH EXHIBITION' with beer label facsimilie 'SALT & COS EAST INDIA PALE ALE'. Some fading/ wear. NR £40-60+.



**210. BASS & COS COASTER.**

5ins diam, **white** glaze with **red & green** transfer 'BASS & COS/ LIGHT EXPORT ALE/ ON DRAUGHT'. Hairline. Mintons p.m. NR £20-30+.



**211. ARMY CLUB ASHTRAY.**

5.75ins tall, **cream** glaze bust of monocol Army Officer with cigarette in his mouth 'ARMY CLUB' to rear. Royal Doulton p.m. Very good. NR £30-40+.



**212. DOULTON ARTWARE**

**MATCHBOX HOLDER/ ASHTRAY.**

4ins tall, **streaky brown** glaze with raised swags & horned masks. Royal Doulton impressed mark. Very good. NR £30-40+.







### Bar back figures.

**213. BLACK & WHITE WHISKY SHOP DISPLAY DUMMIES.** Largest 15.25ins tall, 'BLACK & WHITE BUCHANANS CHOICE OLD SCOTCH WHISKY', one featuring Scottie dogs on label one flattened rectangular shape & paper label. Early. (3) Good. NR £60-80+.

**214. CATTO SCOTCH BAR BACK FIGURE.** 12ins tall, knight in armour stood on oblong plinth, space for bottle to side, silver coloured chalk like pottery 'CATTO SCOTCH' in white raised lettering to base. Good. NR £60-80+.



**215. BEEFEATER GIN BAR BACK FIGURE.** 16ins tall, ceramic figure of a beefeater yeoman, red gold, black & green lettering to plinth. Hairline/ repair to hand holding long axe. NR £20-30+.



**216. BEEFEATER GIN ICE BUCKET.** 10.75ins tall to top of lid. Rubber composition bust of Beefeater Yeoman. NR £20-30+.



### Guinness

**217. GUINNESS CLOCK.** 12 by 5.25ins, white perspex with blue lettering 'DRAUGHT GUINNESS' with penguin pictured. Good. NR £30-40+.



**STOP PRESS** BBR hopes to finalise arrangements to sell, across 2015, the most important collection of Guinness material ever - including many extremely rare, early, promotional advertising items. See BBR 141 for further details.



**218. GUINNESS CLOCK.** 12 by 5.25ins, white perspex with red lettering 'GUINNESS/ TIME'. Electrically operated. Good. NR £30-40+.

**219. GUINNESS TIN TRAY.** 10.5ins diam, multicoloured featuring zookeeper & animals 'HAVE A ROUND OF GUINNESS'. Good. NR £20-30+.



**220. GUINNESS TIN TRAY.** 12.5ins diam, multicoloured featuring toucans 'TOUCANS IN THEIR NESTS AGREE... SEE/ WHAT ONE OR TOUCAN DO'. Good. NR £20-30+.



**221. GUINNESS TIN TRAY.** 12.5ins diam, multicoloured featuring toucan & glasses of Guinness 'IF HE CAN SAY... GUINNESS IS GOOD FOR YOU' etc. Good. NR £20-30+.



**222. GUINNESS TIN TRAY.** 12.5ins diam, multicoloured featuring a trout? 'DRY?/ FLY TO A GUINNESS'. Very good. NR £20-30+.



Advertising.

**223. TURF CIGARETTES ENAMEL SIGN FASTENED TO WOOD FRAME.** 36 by 24ins, "TURF"/ VIRGINIA/ CIGARETTES... AGED AT LEAST 3 YEARS IN THE WOOD' **yellow, red & white** lettering on **dark blue**, cigarette packet pictured with winged horse logo. Outer edge chips & rust etc. NR £80-100+.



**224. WILLIS'S ENAMEL SIGN.** 36 by 18ins, 'WILLS'S'/ 10/ FOR/ 3D/ IN / PACKETS/ ONLY/ CIGARETTES/ SOLD HERE' **yellow** lettering on **dark blue** with cigarette packet pictured in **yellow & red**. Outer edge chips & rust etc. NR £120-150+

**229. PLAYERS NAVY CUT FRAMED ADVERT.** 23 by 18.75ins, coloured scene of sailors sat round table drinking 'PLAYERS NAVY CUT.. JOHN PLAYER & SONS NOTTINGHAM'. Good. NR £30-40+.



**230. PLAYERS CIGARETTE VENDING MACHINE.** 23.5ins tall, . W, wooden vending machine 'PLAYERS NAVY CUT CIGARETTES PLAYERS PLEASE' with 1/- in slot below.. Front pull-out drawer near base. NR £80-100+.

**225. WILLS'S STAR CIGARETTES WOODEN FRAMED ENAMEL SIGN.** 37.5 by 25ins, 'WILLS'S STAR/ CIGARETTES' **white & black** lettering on **brown** background with cigarette packet pictured. NR £80-100+.



**226. WILLS'S STAR CIGARETTES COLOURED FRAMED ADVERT.** 25.5 by 20.5ins village inn scene 'WILLS'S STAR/ CIGARETTES/ 10 FRO 4D 20 FOR 8D'. Good. NR £40-60+.



**227. ROBIN CIGARETTES ENAMEL SIGN.** 48 by 12ins, 'SMOKE ROBIN/ THE POPULAR CIGARETTES' **yellow & red** lettering on **dark blue** background. Surface chips & outer edge rust & chips. NR £60-80+.



**228. CHURCHMANS CUT-OUT STAND UP CARD ADVERT.** 24 by 18ins, **multicoloured** image of golfer holding golf clubs & pack of cigarettes. 'WIN OR LOSE/ SMOKE THE 15-MINUTE CIGARETTE'. Good. NR £40-60+.

### CONDITION - help us to help you!

If you spot condition differences/ faults/ repairs which we have not please advise BBR staff. We will announce such amendments prior to the sale.



**231. TROJAN CARS AND VANS. DOUBLE SIDED ENAMEL SIGN.** 33.5 by 20.5ins, Trojan soldier featured 'TROJAN/ CARS AND VANS SALES &/ SERVICE/ DEPOT' **blue & orange** colouring on **white** background. Minor outer edge rust etc. NR £80-100+.

**232. B.P. RECORD.** 4ins diam. 'BP PLUS AEROSHELL LUBRICATING OIL' advertising mini record. NR £20-30+



**233. WORTHINGTON E. GLASS ON SLATE SIGN.** 20 by 11ins. 'DRAUGHT/ WORTHINGTON/ E' in **blue & gold** lettering on **white**. Good. NR £80-120+



**234. WORTHINGTON GLASS ON SLATE SIGN.** 27 by 12ins 'WORTHINGTON/ IN/ BOTTLE' in **gold** recessed lettering beer label facsimilie. Above in **red, white & black**. Good. £180-200+.

**235. TURNBULLS COLOURED PRESSED TIN SIGN.** 18 by 12ins, 'TURNBULL'S/ STANDARD/ EXTRA SPECIAL/ SCOTCH WHISKY/ OFFICES 51 HIGH STREET HAWICK' bottle of whisky pictured. Very good. £80-120+.



**236. GRANT'S BRICADIER OVAL FRAMED MIRROR.** 21ins across, 'GRANT'S/ BRIGADIER/ IRISH WHISKY' in **gold, black, red & black** lettering. Good. NR £60-80+.



**237. SYMINGTON'S SOUPS.** Multicoloured framed advert 24 by 10ins 'SYMINGTON'S/ SOUPS MANY DELICIOUS/ VARIETIES' little girl holding large packet of Symington's soup pictured (Lucy Mabel Atwell?) titled 'They're Topping'. Very period. Good. NR £40-60+.



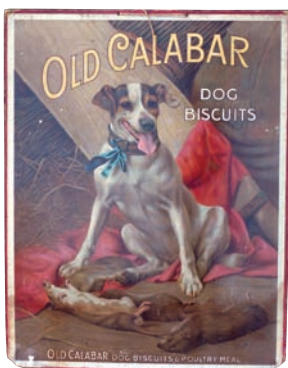
**238. LYONS TEA DOUBLE SIDED ENAMEL SIGN.** 18

by 12ins, 'LYONS TEA/ SOLD HERE' in **yellow & white** lettering on **dark blue**. Surface chips one side & outer edge rust/ chips. NR £20-30+.

**EITHER OR... BBR's unique 'either' 'or' option**

Enabling postal bidders, on a tight budget, to have more chances to obtain something for collections - keep instructions simple & clear!





**239. OLD CALABAR MULTICOLOURED SHOWCARD.** 23 by 18ins, 'OLD CALABAR/ DOG/ BISCUITS... & POULTRY MEAL' Jack Russel dog with dead rats at his feet! Some edge & corner wear - great image. NR £60-80+.

**240. GREEN-SMITHS MULTI-COLOURED FRAMED ADVERT.** 25.75 by 20.5ins, clowns



pictured with performing dogs 'GREENSMITH'S DERBY/ DOG/ BISCUITS/ MANUFACTORY HILTON MILLS NEAR DERBY'. Good. NR £60-80+.

**241. PIRLE COSTUME FRAMED ADVERT.** 22.5 by 16ins, Art Nouveau style 'A

"PIRLE"/ COSTUME DOES NOT/ MARK OR COCKLE/ WITH RAIN' coloured embossed image of girl holding flowers. Good. NR £40-60+.



**242. ILLUSTRATED LONDON NEWS MULTICOLOURED FRAMED ADVERT.** 17.75 by 13.25ins,

Christmas scene little girl with holly & mistletoe knocking on door 'ILLUSTRATED/ LONDON/ NEWS/ CHRISTMAS/ 1895'. Good. NR £40-60+.



**243. BILE BEANS MULTI-COLOURED CUT-OUT STAND UP CARD ADVERT.** 14.5 by 13ins,

beefeater shown holding tin aloft: 'GUARD/ AGAINST/ LIVER.. BILE BEANS/ FOR BILIOUSNESS/ THE/ SAFE/ REGULAR LAXATIVE. Good. NR £30-40+.



**244. ROWNTREES ENAMEL SIGN.** 61.5 by 15ins, 'ROWNTREE'S/ ELECT COCOA' white lettering on dark blue, coat of arms, 'Makers to H.M. King'. Surface, outer edge chips & rust. NR £40-60+.



Tins



**245. JACOB'S BISCUIT TIN CORONATION**

**COACH.** 5.5ins tall, 9ins long. Red & gold with multicoloured scenes bottom of coach. 'W & R JACOB & CO LTD/ BISCUIT MANUFACTURERS' printed to base. With original box, some damage. Good. NR £40-60+.

**246. CRAWFORDS BISCUIT TIN.** 6ins tall, 8ins long. Tin in shape of horse drawn coach. Red, yellow & black with coloured gent & lady looking out of window 'GR' to sides 'WILLIAM CRAWFORD & SONS LTD BISCUIT MANUFACTURERS' under lift off roof. Some general wear etc. NR £40-60+.





**247. HUNTLEY & PALMER GRANDFATHER CLOCK TIN.**

Circa 1929, 11.5ins tall, with moving hands to clock face, decorated in **gold & black** lacquer design 'HUNTLEY & PALMERS BISCUITS READING LONDON' stamped under base. Hands usually absent. Good. NR £60-80+.

**248. HUNTLEY & PALMER CHINA CABINET TIN.**

7ins tall, c.1911-12, lattice-

windowed cabinet with coloured images of china pieces in cabinet 'HUNTLEY & PALMERS BISCUITS READING LONDON' stamped to underside lid. Good. NR £60-80+.



**249. LADY CINDERELLA'S COACH TIN.**

4.25ins tall, 6.5ins long, **yellow, red & gold** colouring 'THE LADY/ CINDERELLA/ COACH' printed to rear. Usual surface wear. NR £30-40+.



**250. WILLIAM CRAWFORD WORLD GLOBE TIN.**

8ins tall, on circular stand 'WILLIAM CRAWFORD & SONS LTD BISCUIT MANUFACTURERS' printed under base. Good. NR £30-40+.



**251. LYONS TOFFEE TOY SOLDIER TIN.** 11ins tall, **blue, black, red & yellow** colouring 'LYONS ASSORTED TOFFEE' in raised lettering around **green** base. Usual surface wear. NR £30-40+.

**252. MAZAWATTEE TEA TIN.**

7.25 by 4.5ins, **multicoloured** picture of granny & little girl "OLD FOLKS AT HOME" 'MAZAWATTEE TEA'. Good. NR £20-30+.



**253. HUNTLEY & PALMERS TOY SOLDIER BISCUIT TIN.**

8.25ins tall, **red, white & black** colouring. 'Huntley & Palmers Biscuits Reading London' printed under base. Good. NR £20-30+.



**254. LIN-CAN LARGE SHOP ADVERTISING TIN.** 14.5ins tall, 8.75ins diam **multicoloured** fruits one side vegetables to the other 'LIN-CAN PICKED & CANNED/ IN A DAY'. Good. NR £60-80+.

**255. SHARP'S TOFFEE TIN.**

5.25ins tall, 10.5ins long. Tin shaped as a house 'KREEMY KOTTAGE' coloured picture of Sir Kreemy Nut and old lady both sides 'SHARP'S/ HOME MADE SUPER-KREEM TOFFEE' in **gold** lettering to **green** lift off roof. Usual general wear. NR £30-40+.



**follow BBR Auctions on Facebook**

Auction results, News & Updates regularly added to FB - befriend us!





**256. SHARP TOFFEE MONEY BOX TIN.** 2.75ins tall, 4.5ins long. Smaller version of previous lot but as a money box. Usual general wear. NR £20-30+.

**257. RADIANCE TOFFEE TIN.** 6.5ins tall, 5.75ins wide 'RADIANCE/ DEVON CREAM/ LIQUORICE TOFFEE/ MANUFACTURED BY/ RADIANCE LIMITED DONCASTER' plus red plastic view master. (2) NR £20-30+.



#### Advertising cabinets

**258. CADBURY'S CHOCOLATE SHOP DISPLAY CABINET.** 20ins tall, 24.5ins wide, 9ins deep,

wooden construction elongated six sided shape, glass to front. 3 panels, mirrored back, with door to side 'CADBURY'S CHOCOLATE/ MAKERS TO THE QUEEN' to top panels. £300-400+.



**259. CADBURY SHOP DISPLAY CABINET.** 20ins tall, 24ins wide, 9ins deep, white metal framed wooden cabinet elongated six sided shape, mirrored back, glass to front. 3 panels, door to side. 'CADBURY' to top 'F.J. PETTIT MAKER' to bottom with glass shelf. £300-400+.



**260. MERITOR SHOP COUNTER DISPLAY CASE.** 11.5ins tall, 17.5ins wide, 10.5ins deep. Wooden display case with glass displaying toothbrushes

'MERITOR' near base 'MADE BY S. MAW SON & SONS LTD MAKERS OF/ TOOTHBRUSHES TO THE ROYAL DENTAL HOSPITAL LONDON' to one side. Pull-out drawers to rear. Pot lids go-with? Very good. NR £60-80+. (GM)



#### Pharmacy



**261. ENGLISH? DELFT DRUG JAR.**

7.5ins tall, white tin glaze with blue decoration angel & cherubs etc. 'S: VIOLAR'. Spouted with handle. Usual chipping to glaze & hairline. NR £250-300+



**262. DELFT DRUG JAR.**

7.5ins tall, white glaze with blue decoration cherubs etc. 'BASILI. N' in black lettering. Glaze wear to rim. NR £200-300+.







**263. DELFT DRUG JAR.**  
6.75ins tall, **white** tin glaze, **blue** decoration angel, birds & flowers 'TAMARIND'. Usual chipping to glaze. NR £200-300+.

**264. GLASS CARBOY.**

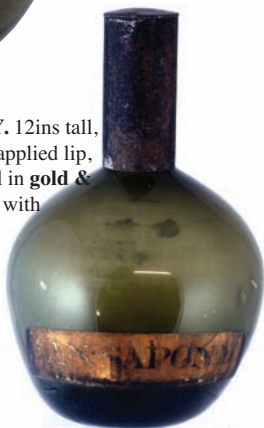
10.75ins tall, shop display bottle, **deep purple** glass & **black** 'SODAE BORACIS'. Rolled lip with base pontil. Superb!! Very good. NR £170-220+.



**265. GLASS CARBOY.** 11ins tall, shop display bottle **mid olive green** glass onion shape applied lip, base pontil painted label in **gold, red & black** 'SP RECT'. Very good. NR £170-220+.



**266. GLASS CARBOY.** 12ins tall, **dark olive green** glass applied lip, base pontil painted label in **gold & black** 'LIN SAPON M' with original tin metal cap. Very good. NR £120-150+.



**267. SHOP DISPLAY ROUND.** 12.5ins tall, **deep purple** glass rolled lip with ground pontil base. Painted label in **gold, red & black** 'ZINC. OXID.' with original tin cap. Good. NR £80-120+.



**268. SHOP DISPLAY ROUND.** 10.5ins tall, **deep purple** glass rolled lip with pontil base. Painted label in **gold, red & black** 'R: KRAMER' with original tin cap. Stunning vivid colour. Very good. NR £120-150+.

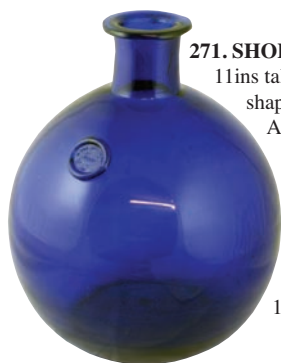


**269. SHOP DISPLAY ROUND.** 11.5ins tall, **blue** glass rolled lip base embossed 'KILNER BROTHERS DEWSBURY' painted label in **gold, red & black** 'TR O OII' with original tin cap. Very rare in this colour. Very good. NR £60-80+.



**270. SHOP DISPLAY ROUND.** 12ins tall, **olive green** glass rolled lip with painted label in **gold & black** 'POTASS/ CARB.' with tin cap. Very good. NR £60-80+.





**271. SHOP DISPLAY CARBOY.**

11ins tall, **cobalt blue** glass onion shape flared lip & base pontil. Applied seal with 'LONDON' etc. BBR sold this example many yrs ago - only the 2nd such seen. Very good. NR £80-120+.



**272. PAIR OF CERAMIC SHOP ROUNDS.**

10 & 8ins tall to top of domed lids, **green & white** glaze both with recessed labels smallest with under glass label - **gold, red, black & white** 'UNG/ RESINAE'. Larger damaged lid, otherwise. (2) Good. NR £30-40+.



**273. TRIO CERAMIC SHOP ROUNDS.** 11 & (2) 10ins tall to top of domed lids, **pink & white** glaze (2) with **gold & black** paper labels 'UNG SULPHUR' & 'UNG ZINCI' the other with **gold** painted label 'UNG: CETACEI'. Largest hairlined. Rarest of all the jar colours.

(3) NR £80-120+.



**274. TRIO CERAMIC SHOP ROUNDS.**

All 7ins tall to top of flat lids **white** glaze 'CERAT/ RESINAE' & 'PULV:/ ALOES/ C: CAN:' & 'PULV:/ AMYL:' in **black** lettering within shield surround in **gold**. (3) Good. NR £30-40+.



**275. 3 GLASS SHOP ROUNDS.**

8ins tall to top of loose stoppers in **opaque blue** glass with **gold & black** painted labels 'SYR : SCILL' & 'SYR : TUSSI' & 'SYR : RHOEAD' all with pontil bases. One rim chipped. Very rare in this extraordinary colour. (3) NR £60-80+.



**276. GROUP OF 3 SHOP ROUNDS.**

7.5, to 5.5ins to top of chisel stoppers **green** ribbed glass, recessed labels under glass - **red, gold & black** 'PULV/ SAL LIMON/ POISON' & 'FERRI/ ARSENIAS', one

with painted label in **gold, red & black** 'TR DIGITAL/ CONC'. (3) Good. NR £30-40+.



**277. SHOP ROUND.** 7.5ins tall to top of chisel stopper, **cobalt blue** glass with horizontal moulded ribbing 'ACID/ OXALIC' in **white** enamelled lettering. Very good. NR £80-100+.



**278. POISON SHOP ROUND**

(DP pg 96). 7ins tall to top of chisel stopper, **cobalt blue** glass with horizontal moulded ribbing 'TINCT/ BELL AD.' in **white** enamelled lettering 'POISON' in **red** lettering near base. Very good. NR £80-120+.





**279. PAIR OF SHOP ROUNDS.** 8.25ins tall to top of chisel stoppers, **cobalt blue** glass, recessed labels under glass in **red gold, black & white** 'SYR/ PRUN. SEROT.' & 'SYR : PAPAVALB.'. (2) Very good. NR £30-40+.

**280. DAY AND SONS MEDICINE CHEST.**

9.25ins tall, 14.5ins wide, 12.5ins deep. Wooden chest - colourful pictorial label under lid. 'DAY AND SONS/ ORIGINAL/ UNIVERSAL MEDICINE/ CHEST PRICE £2-4... HORSES CATTLE ... DAY & SONS CREWE LTD CREWE'. Good. NR £60-80+.



**281. GROUP OF MAINLY DAY SON & HEWITT BOTTLES EPHEMERA ETC.** Includes labelled Ruby Remedy bottle & coloured Day & Sons poster. NR £30-40+



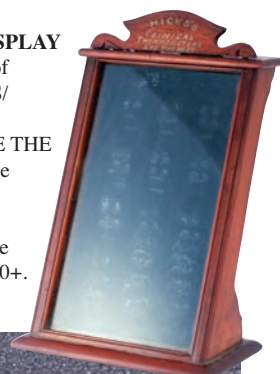
**282. DAY & SONS EVERY DAY FARRIERY BOOK.** Plus packaged 'Day & Sons Red Drink' plus labels etc. NR £30-40+.



**CONDITION - help us to help you!**

If you spot condition differences/ faults/ repairs which we have not please advise BBR staff. We will announce such amendments prior to the sale.

**283. SMALL SHOP DISPLAY CASE.** 12ins tall to top of pediment with 'HICKS'S/ CLINICAL/ THERMOMETERS ARE THE BEST' 7.5ins wide at base 4.5ins deep sloping glass front. Access to back. An unusual small & attractive cabinet. Good. NR £30-40+.



**284. VIROL SCALES.** 10.5ins tall, 21.25ins long. Heavy cast iron scales 'VIROL A PERFECT FOOD' one side 'VIROL FOR CHILDREN' in raised lettering front & rear 'VIROL' both ends. Never seen another such. NR £60-80+. (GM)

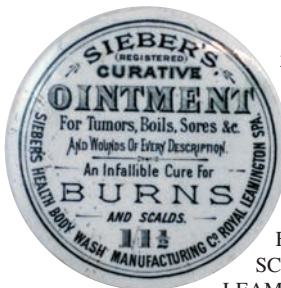
**285. MELLINS FOOD SCALES.** 10.5ins tall, 19.5ins long. Heavy cast iron baby weighing scales 'MELLINS FOOD' in raised lettering both sides. NR £60-80+.



**Ointments.**

**286. OLDROYDS OINTMENT POT.** 1.25ins tall, white glaze transferred to base 'OLDROYDS FAMILY OINTMENT/ W & G OLDROYD/ BOTTOM ALMA ST & STANNARY ST/ PELLOW LANE HALIFAX'. Minor flaws. Scarce. NR £60-80+. (AB)





**287. SIEBERS OINTMENT POT LID & BASE.** 2.5ins diam, 'SIEBERS/ CURATIVE/ OINTMENT/ AN INFALLIBLE CURE FOR BURNS AND SCALDS/ 1/11/2/ ROYAL LEAMINGTON SPA'. With lots of printing to base. Very rare. Very good. NR £60-80+. (NL)

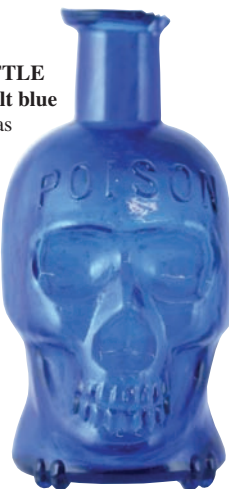
#### Poisons & cures



**288. ZZO POISON BOTTLE.** 5.75ins tall, **cobalt blue** glass extraordinarily shapely bottle on circular pad base embossed 'ZZO' to two sides 'POISON NOT TO BE TAKEN INTERNALLY' vertically to one side. Large 'M' to base. Possibly one of only two examples recorded worldwide? Very good. NR £400-600+. (NL)



**289. SKULL POISON BOTTLE** (DP pg 20) 4.25ins tall, **cobalt blue** glass poison bottle moulded as a skull standing on crossed bones, embossed 'POISON' to forehead. Some lip damage - well worth repairing. NR £300-400+.



**290. ETON STAR POISON BOTTLE** (DP pg 58) 7ins tall, **cobalt blue** glass star section with flat back horizontal ribs 'RD 716057' embossed near base 'POISON' & 'NOT TO BE TAKEN' vertically between ribs with stopper. Exceptionally rare large size. Very good. NR £300-400+.



**291. R.W.O. HOSPITAL POISON BOTTLE** (DP pg 101) 2.5ins tall, **cobalt/ turquoise blue** glass hexagonal embossed 'R.W.O./ HOSPITAL' & 'NOT TO BE TAKEN'. Lip chip. Tiny size. Very rare. NR £30-40+.



**292. TIPPERS "EMBRO" POISON BOTTLE.** 7ins tall, **cobalt blue** glass square section embossed "EMBRO"/ TIPPERS/ WHITE OILS/ BIRMINGHAM'. Unrecorded. **Very rare.** Slight dullness in areas. NR £60-80+.



#### Email contact?

Always ensure  
your email is included  
on your bid sheet!

- 293. SUBMARINE POISON BOTTLE** (DP pg 25)  
2.5ins tall, 4ins long, **cobalt blue** glass embossed  
'POISON' to front 'REGISTERED NO 336907' to  
base. Some neck  
restoration - an  
affordable rarity? NR  
£150-200+.



- 294. MANCHESTER ROYAL  
INFIRMARY POISON BOTTLE** (DP  
pg 100) 4ins tall, **cobalt blue** glass  
hexagonal embossed vertically  
'MANCHESTER/ ROYAL  
INFIRMARY'. Very good. NR £30-  
40+.



- 295. MANCHESTER  
ROYAL INFIRMARY  
POISON BOTTLE.**  
(DP pg 100) 5.75ins  
tall, **green** glass  
hexagonal embossed  
vertically 'FROM  
MANCHESTER/ ROYAL  
INFIRMARY'. Very good. NR £30-  
40+.



- 296. 'ACROSYL'  
POISON BOTTLE.**  
(DP pg 71) 6.75ins  
tall, **cobalt blue** glass slightly  
tapering cylinder bottle embossed  
to shoulder 'ACROSYL  
NOT TO BE TAKEN'  
with graduation scale &  
lozenge-like flutes.  
Very good. NR £80-  
100+. (NL)



- 297. CYLINDRICAL POISON  
BOTTLE.** 8.5ins tall, **green** glass  
cylinder embossed vertically  
'NOT TO BE TAKEN' with ribs  
either side 'POISON' embossed  
near base to rear. Very good. NR  
£30-40+. (NL)



- 298. CYLINDRICAL  
POISON BOTTLE.** 6ins  
tall, **green** glass cylinder  
embossed vertically  
'NOT TO BE TAKEN'  
with ribs either side 'POISON'  
embossed near base to rear. Very  
good. NR £30-40+. (NL)



- 299. CYLINDER POISON  
BOTTLE.** 9.5ins tall, **dark olive  
green** glass ammonia style  
bottle, raised dots to shoulder  
embossed 'NOT TO BE TAKEN'  
below 'POISONOUS' vertically  
with raised dots & ribs either  
side. A rare Scottish poison. Very  
good. NR £40-60+. (NL)



- 300. PORT DUNDAS ACID  
PATENT POISON BOTTLE.**  
(DP pg 75) 7.5ins tall to top of  
screw stopper, white stoneware  
cylinder 'JARVIE & MILLER  
GLASGOW/ ACID (POISON)' in  
**blue** impressed lettering. Port  
Dundas p.m. Good. NR £40-60+.  
(NL)





**301. AMMONIA POISON BOTTLE.**  
6.5ins tall, **cobalt blue** glass, oval section embossed 'NATIONAL' to shoulder 'AMMONIA' in large letters vertically to front 'CAUTION' & 'NOT TO BE TAKEN' either side. Very good. NR £30-40+.



**302. STONEWARE POISON JAR.** 5ins tall, **off white** stoneware jar, wide neck transferred 'POISON', one simple line. Very rare. Good. NR £30-40+. (NL)



**303. COLE'S PATENT POISON BOTTLE.** (DP pg 39) 7.5ins tall, **cobalt blue** glass rectangular section with sunken side panels embossed 'COLES PATENT/ ENGLAND' to one side 'OSSIDINE' to the other 'POISON' near base. With stopper. Very good. NR £30-40+.



**304. WM RADAM'S MICROBE KILLER BOTTLE.** 10.5ins tall, **deep amber** glass square section embossed 'GERMBACTER-IAOR/ FUNGUS DEST-ROYER/ CURES/ ALL DISEASES', man beating skeleton pictorial 'WM RADAMS/ MICROBE KILLER REGISTERED TRADE MARK DEC 13 1887'. Good strong embossing. Exc/ A1. NR £150-200+.



**305. FOOT ROT CAUSTIC BOTTLE.**  
5ins tall, **cobalt blue** glass, rectangular section. Very heavily embossed 'MENHINICK'S/ WESTERN COUNTIES/ FOOT ROT CAUSTIC'. Good. NR £40-60+. (GM)



**306. FISHER'S SEAWEED EXTRACT BOTTLE.** 5ins tall, **green** glass. Unique triangular shape, bulb neck, embossed 'FISHER'S/ SEAWEED/ EXTRACT MANX SHRUB... ULVERSTON' to one panel 'QUARRIES PATENT' to other. Getting harder to pick one of these 'classics' up. Rear minute base 'nick'. NR £60-80+.



**307. WARNERS SAFE COMPOUND BOTTLE.** 5.25ins tall, **deep amber** glass, embossed 'WARNERS/ "SAFE" COMPOUND' with the familiar Safe motif t.m. Very good. NR £120-150+. (KB)



**308. WARNERS 4 CITIES SAFE CURE BOTTLE.** 9.5ins tall, **very, dark olive green** glass, embossed 'WARNERS SAFE CURE/ MELBOURNE AUS/ LONDON ENG/ TORONTO CAN/ ROCHESTER NY USA' with familiar Safe motif. Spectacularly full of seed bubbles - incredibly characterful. Very good. NR £40-60+.





**309. PIESSE & LUBIN BOTTLE.** 3ins tall, **cobalt blue** glass rectangular shape embossed 'PIESSE/ AND/ LUBIN/ LONDON'. Delightful early piece. Very good. NR £30-40+. (GM)

**310. G.W. COUSINS & CO MULTICOLOURED**

**SHOWCARD.** 15.25 by 10ins 'WE SELL COUGH LUNG & CHEST BALSAM/ FROM/ G.W. COUSINS & CO/ SOLE PATENTEES OF THE POOR MANS FRIEND'. Row of bottles pictured. One of only 2 examples recorded - superb meds go-with. Very good. NR £80-120+. (AB)



**311. DR SOULES HOP BITTERS BOTTLE.** 10ins tall, **deep amber** glass, square section sloping shoulders. 'DR SOULES/ HOP/ BITTERS 1872' to shoulder panels, hop plant in relief. Distinctly differing pictorial embossing to the 'norm & a much longer neck. Very good. NR £40-60+. (GM)



**312. DR SOULES HOP BITTERS BOTTLE.** 9.5ins tall, **deep amber** glass, square section sloping shoulders shorter neck than previous example embossed 'DR SOULES/ HOP/ BITTERS/ 1872' to shoulder panels with hop plant pictured in relief. Good. NR £30-40+. (KB)

**313. DR SOULES HOP BITTERS BOTTLE.** 9.5ins tall, **golden amber** glass, square section sloping shoulders. Embossed 'DR SOULES/ HOP/ BITTERS 1872' to shoulder panels with hop plant pictured in relief. Very good. NR £30-40+. (KB)



**Salt glaze & early stoneware**

**314. DATED FLAGON.** 9.75ins tall, brown top, lower tan salt glaze lots of raised decoration, coat of arms to front with 'WILLIAM WARNOCK/ 1856' to scroll above, Prince of Wales plumes below. Grapes & vines to handle to rear. Drinking toppers, knights in armour, classical figures etc. all around. Very good. NR £800-1,200+.







**315. LINCOLN SLAB SEALED REFORM FLASK.** 9.25ins tall, top **shiny brown** glaze, lower **grey/ green** Oldfield slip glaze. Lady with bird figural, probably Queen Victoria? **Rear slab seal** imp'd 'FALCON SPIRIT/ VAULTS' with 'OLDFIELD & CO/ MAKERS' imp'd below. Extremely rare. Very good. NR £400-600+. (DD)



**316. LORD BROUGHAM REFORM FLASK.** 7ins tall, half figural flask, top half **brown**, lower **tan** salt glaze. Lord Brougham holding scroll imp'd 'THE/ TRUE SPIRIT OF/ REFORM', 'BROUGHAM/ REFORM/ CORDIAL' below. Doulton & Watts p.m. to rear. Simply a very fine example. NR £120-150+. (DD)



**317. DANIEL O'CONNELL REFORM FLASK.** 8ins tall, half figural flask well modelled as Daniel O'Connell (*The Irish Reformist*) holding scroll. Imp'd 'IRISH/ REFORM/ CORDIAL', 'DANIEL O'CONNELL' below. 'DENBY & CODNOR PARK/ BOURNES/ POTTERIES DERBYSHIRE' to rear. Very good. NR £150-200+. (DD)



**318. HOUSE FLASK.** 7ins tall, 3 storey house shaped flask. Top **brown** glaze, lower **tan** salt glaze tiled roof, windows & door to front, faceted chimney. Rear area to take a paper label. Very good. NR 3120-150+. (NL)



**319. PEG LEG MAN (SAILOR)?** 6ins tall, flask top **brown** glaze, lower **tan** salt glaze front modelled as a man with a peg leg holding bottle, glass to his mouth. Scarce flask in this more distinctive small size. Very good. NR 3120-150+. (DD)



**320. MAN ON BARREL FLASK.** 8.5ins tall, all **tan** salt glaze. Half figural as man on barrel 'ALL ROUND MY BAR GOOD CUSTOMERS I SEE' around barrel to front 'ALL ROUND MY HAT I VEARS A GREEN WILLOW' to rear. Very good. NR £150-200+. (DD)



**321. NAPOLEON FLASK.** 6.25ins tall, top **brown** glaze, lower **tan** salt glaze raised head of 'NAPOLEON' to front 'DANTE' to rear. Very good. NR £60-80+.





- 322. POWDER FLASK.** 8ins long. Varying **brown** glaze neck lower **tan** salt glaze, flask modelled as a powder flask, raised detail of gun dogs front & rear. Base impressed 'STEPHEN GREEN IMPERIAL POTTERIES LAMBETH'. Superb tiger glaze - one side medium, other lighter. Very good. NR £120-150+. (DD)



- 323. PUB NAMED PURSE/POUCH FLASK.** 4.75ins tall, all **tan** salt glaze imp'd to side 'F. DARK WINE & SPIRIT MERCHANT DEVONPORT ARMS RADNOR PLACE GLOUCESTER SQUARE'. Very good. NR £150-200+. (DD)

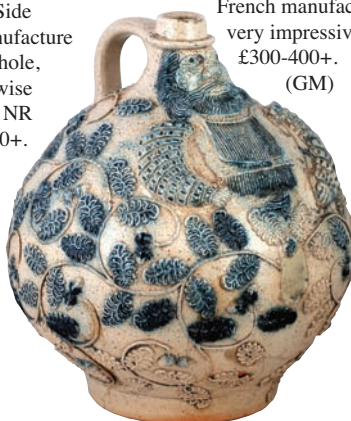


- 324. HULL FLASK.** 11ins tall, **grey/ green** glaze lozenge shape flask imp'd 'I. PECK/ SPIRIT/ MERCHANT/ HULL'. Only example recorded & a scarce large size. Side in manufacture blow hole, otherwise good. NR £60-80+.

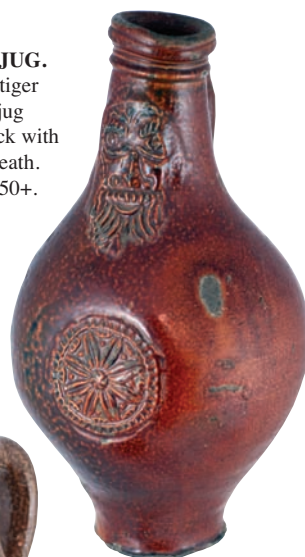


### POSTAL BIDDERS

Postal bidders must satisfy **themselves** lot/ s meet their condition standards. For a more detailed inspection/ personal assessment please tel. BBR, give lot number, call back later & speak with AB.



- 325. BELLARMINE JUG.** 9.5ins tall, **red brown** tiger glaze, bulbous bodied jug bearded face below neck with detailed medallion beneath. Very good. NR £200-250+.



- 326. BELLARMINE JUG.** 8.5ins tall, **very varied brown** colour tiger glaze. Rear handle. Bearded face below neck, medallion beneath. Couple of flakes, generally overall very good. £250-300+.

- 327. LARGE BELLARMINE STYLE JUG.** 13ins tall, **grey** glaze with, **blue** highlights. Handle to rear bearded face below neck with arms beneath with acorns & leaves. Swirls all over body. Believed of French manufacture - extraordinary & a very impressive piece. Very good. NR £300-400+. (GM)





**328. LARGE BELLARMINE STYLE JUG.** 16.5ins tall, **light tan** tiger glaze, large bulbous bodied jug. Handle to rear with thumb mark finish. Good. NR £60-80+.



**329. LARGE BELLARMINE STYLE JUG.** 13.75ins tall, **brown** glazed large bulbous bodied jug, rear handle. Initials 'TD' scratched into clay. Lip chip. Early crude piece. Good. NR £40-60+.



**330. BELLARMINE STYLE JUG.** 11/75ins tall, **brown** glazed bellarmine style jug, handle to rear. Scarce small size - exactly as found, uncleaned. No damage. NR 360-80+.



**331. EARLY S. GREEN NEWCASTLE PORTER BOTTLE.**

9ins tall, highly varying **tan** salt glaze imp'd below shoulder 'TAYLOR & CO/ PORTER MERCHANTS/ NEWCASTLE' with 'GREEN/ LAMBETH' imp'd p.m. near base. Few kiln 'in manufacture' touch marks which add to the overall character & couple of insignificant base flakes. Very good. NR £200-300+. (KB)

**332. STAMFORD EARLY 'EX' BOTTLE.** 6.25ins tall, **brown & tan** salt glaze imp'd 'W. B. BLUNSUM/ WELLINGTON TAVERN/ STAMFORD' 'EX' near base. Rear faint hairline (old/ stable) & couple of base flakes. A very rare pub named early piece. NR £40-60+.



**333. SPIRIT FLASK.** 5.75ins tall, **pale tan** salt glaze sloping shouldered flask imp'd to front 'J. SINCLAIR/ SPIRIT MERCHANT/ OPPOSITE THE/ THEATRE'. The earliest style of its type. Very good. NR £80-120+.



**334. PUB NAMED SPIRIT FLASK.** 7.5ins tall, **brown** top lower **tan** salt glaze ribbed sloping shoulders imp'd to front 'J. WALKER/ WINE & SPIRIT MERCHANT/ WHITE LION/ LIVERPOOL STREET/ CITY'. Very good. NR £80-120+. (DD)



**335. CAMBRIDGE BARREL FLASK.** 4.75ins tall, **tan** salt glaze barrel imp'd 'J.C. STEVENS/ WINE & SPIRIT MERCHANT/ CAMBRIDGE' above bung hole. Very good. NR £120-150+.



**336. PRESERVE JAR.** 6.5ins tall, **brown** top, lower **tan** salt glaze imp'd 'BLACK CURRANT JELLY/ R & J GUNTER/ LONDON' to front. Minor rim flakes. NR £30-40+.





**337. DATED SPIRIT FLASK.** 8.5ins tall, tan glazed top lower off white glaze, handle to rear impressed 'ARCHIBALD HOLMES/ 1857' to shoulder with raised toppers etc. to sides (one chipped). Very unusual Scottish (?) piece. Very good. NR £80-120+. (DD)



**340. NEWARK SLAB SEAL FLASK.** 5.75ins tall, grey/ green glaze flask, ribbed sloping shoulders, vertically impressed large slab seal covering most of body 'Mc GEORGE & SONS/ WINE & SPIRIT MERCHANTS/ NEWARK ON TRENT'. Superb colour & strike. Very good. NR £250-300+.



**338. WEST COUNTRY PUZZLE JUG.** 8.5ins tall, brown glazed top, lower off white glaze. Handle to rear, 4 spouts with pierced holes above & below with raised toppers, tree & windmill. Very good. NR £60-80+. (GM)



**341. HULL SLAB SEAL FLASK.** 8.5ins tall, grey/ green glaze lozenge shape flask, slab seal reads 'J. CHRISTIE/ MYTON GATE/ HULL'. Very rare flask. Very good. NR £200-250+. (DN)



**339. HORNCastle VETERINARY SLAB SEAL BOTTLE.** 4ins tall, grey/ green glaze, small round shouldered bottle slab seal reads 'J. KNIGHT/ VET. SURGEON/ HORNCastle'. An exceptionally rare, & tiny slab seal. Very good. NR £300-400+. (DN)

**342. LOUTH SLAB SEAL PORTER.** 8.25ins tall, grey/ green glaze porter, slab seal reads 'OVERTON & EAST B.S. PORTER/ LOUTH'. Very good. NR £120-150+.



**343. BRIGG SLAB SEAL PORTER.** 10.5ins tall, grey/ green glaze porter, slab seal reads 'H & R HILDYARD/ WHOLESALE & RETAIL/ WINE & SPIRIT MERCHANTS/ BRIGG'. Very good. NR £60-80+.



**344. OLDHAM SLAB SEAL GINGER BEER BOTTLE.** 7ins tall, **grey/ green** glaze, large diamond shape seal reads 'A. HALLIWELL/ 1877/ OLDHAM', registered t. m. to centre. Usual in manufacture flaws otherwise very good. NR £60-80+.(DN)



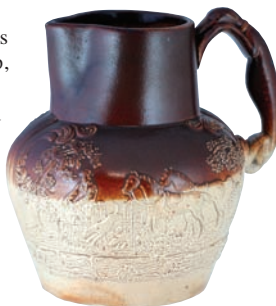
**345. MORTLAKE STYLE JUG.** 6.5ins tall, **brown** ribbed top, lower **tan** salt glaze. Raised punch party panel to front with raised hunting motifs, hounds, huntsman, toppers etc. All around. Hairline to front. NR £150-200+.(DD)



**346. SMALL MORTLAKE STYLE JUG.** 3.75ins tall, **brown** top ribbed below rim, lower **tan** salt glaze with raised hunting motifs, huntsman, hounds & stag. A most unusual. Very good. NR £80-100+.(GM)

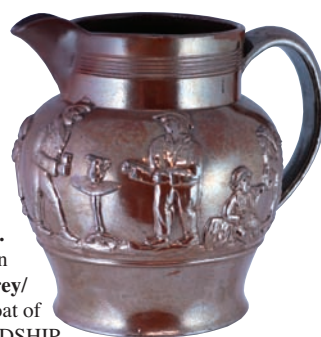


**347. LARGE SALT GLAZE JUG.** 8.25ins tall, **brown** glazed top, lower **tan** salt glaze. Highly detailed raised hunting scene, horses, huntsmen & hounds with kill. Greyhound handle to rear. Not seen this variant before? Very good. NR £80-100+.



**348. LARGE STONEWARE JUG.**

10ins tall, **dark brown** glazed jug, interior **grey/ green** glaze, raised coat of arms to front 'FRIENDSHIP LOVE AND TRUTH' impressed above. Recumbent lions either side. Greyhound handle, face mask below pouring lip. Shamrock, rose & thistle below rim. Absolutely magnificent piece. Very good. NR £120-150+.



**349. LARGE STONEWARE JUG.** 8.75ins tall, **dark shiny brown** glazed jug. Strap handle to rear with large raised figures in relief, toppers & smokers.

Pouring lip restoration. Unusual sprigs. NR £60-80+.

**350. LARGE SALT GLAZE JUG.** 9.5ins tall, **dark brown** top, lower **tan** salt glaze, rear handle, raised sprigs: toppers, windmill, hunting scene, huntsman, hounds & stag all round. Exc/A1 NR £80-100+.



**351. DOULTON SALT GLAZED JUG.** 7.5ins tall, **brown** top, lower **tan** salt glaze, greyhound handle, stags head below pouring lip. Hunting scene all around, hunters with hounds chasing hare. Doulton Lambeth imp'd mark. Quality manufacture. Very good. NR £30-40+.





**352. VERY EARLY TANKARD.** (Possibly c. 1790?) 8.5ins tall to top of **silver** metal rim. **Brown** top, lower **off white** glaze with raised punch party panel to front. Trees & cottage either side. Hunting motifs below huntsman & hounds. Chips & hairlines to base. NR £200-300+. (DD)



**355. SALT GLAZE TANKARD.** 5.25ins tall, **dark brown** glaze, **grey/green** interior raised coat of arms to front, vases of flowers both sides. Greyhound handle. Very good. NR £80-100+.



**356. LARGE SALT GLAZE TYG.** 6ins tall, **brown** top lower **tan** salt glaze. 3 greyhound handles with raised hunting motifs, toper & windmill all around. Very good. NR £80-120+.



**353. SALT GLAZE TANKARD.** 4.25ins tall, **brown** top lower **tan** salt glaze with raised hunting scene all around (The Kill). Unusual squat form. Very good. NR £60-80+.

**354. LARGE SALT GLAZE TANKARD.** 6.5ins tall, **dark brown** glazed tankard with superb quality raised hunting scene all around. Huntsman, hounds & fox. Very good. NR £80-100+.



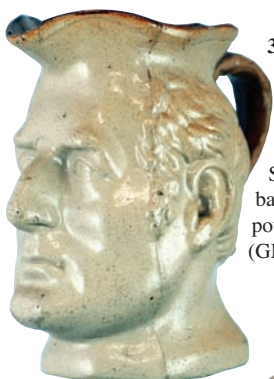
**357. LARGE LOVING CUP.** 6.75ins tall, **shiny brown & cream** glaze twin handled loving cup with raised motifs, toppers, hounds etc. Most unusual item. Very good. NR £40-60+.



**358. TOBACCO JAR.** 6.5ins tall to top of lid. **Brown** top lower **tan** salt glaze octagonal shape with raised figures to each panel. Doulton & Watts Lambeth impressed to base. Rim & lid knob chips & lid hairline but still a very rare piece? NR £40-60+. (DD)







**359. DUKE OF WELLINGTON JUG.**

6ins tall, **tan** salt glaze jug modelled as Duke of Wellingtons head.

Stephen Green p.m. to base. Nibbles & hairline to pouring lip. NR £40-60+. (GM)

**360. TAM O'SHANTER JUG.**

7ins tall, **tan** glaze stoneware top, lower **off white** glaze, handle to rear. Modelled as head & shoulders of Tam O'Shanter. Very good. NR £60-80+. (GM)



**American flasks**

*Early Victorian American glass whiskey flasks*



**361. EAGLE FLASK.** 6.75ins tall, **pale green** glass bust of Washington one side, eagle to the other, smooth lip, beaded sides. Very good.

NR £80-120+.



**362. SEEING EYE EAGLE FLASK.**

6ins tall, **yellowish olive green** glass eagle embossed both sides. Smooth lip pontil scar to base. Very good. NR £60-80+.



**363. CLASSICAL BUST FLASK.**

5.75ins tall, **dark olive green** glass, bust both sides, smooth lip pontil scar to base. Very good. NR £60-80+.



**364. CORNUCOPIA URN FLASK.** 5.25ins tall, **bright green** glass, cornucopia embossed one side urn of flowers to the other, smooth lip pontil scar to base.

Very good. NR £60-80+.



**365. CORNUCOPIA URN FLASK.**

6.5ins tall, **dark olive green** glass cornucopia embossed one side urn of flowers to the other. Smooth lip. Pontil scar to base. Very good. NR £30-40+.



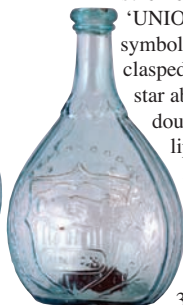




**366. PIKES PEAK/ EAGLE FLASK.** 6.25ins tall, aqua glass 1/2 pint flask. Tooled lip, 'PIKES PEAK' & figure embossed to one side. Eagle to the other. Very good. NR £20-30+.

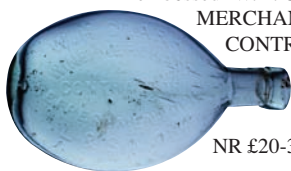


**367. CALABASH FLASK.** 9ins tall, aqua glass, eagle embossed with scroll one side 'UNION' symbol with clasped hands star above, double collar lip. Pontilled base. Very good. NR £20-30+.



**368. STAR FLASK.** 7.5ins tall, brown/amber glass, embossed star with all seeing eye & 'A.D.' one side. Star with arm & 'GR. J.A.' below to other side. Very good. NR £40-60+.

**369. RAILWAY FLASK.** 5.5ins long, aqua glass round bottomed flattened shape flask embossed 'W.H. CLARK/ WINE MERCHANT/ & CONTRACTOR/ REFRESHMENT DEPT/ L & S.W. RLY'. Very good. NR £20-30+.



**370. ALLOA TYPE WINE BOTTLE.** 10.5ins tall, large squat cylinder shape neck with flared lip & 4 applied rigaree ribbons to body. Dark olive green glass with lots of white enamelled flecks. Base pontil. Very good. NR £250-300+.



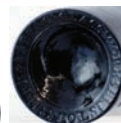
Black glass

**371. SEALED CYLINDER WINE BOTTLE.**

9.25ins tall, dark olive green glass. Applied double collar lip, 3 piece mould. Seal with initials 'H.W.C' (Henry Winfred Cooke). *Henry Winfred Cooke (1812-1880) was rector of Astley Church, possibly bottle is of Stourbridge manufacture. Very good. NR £80-100+. (CM)*



**372. SEALED CYLINDER WINE BOTTLE.** 11.25ins tall, dark olive green glass, 3 piece mould Ricketts patent bottle. Seal with initial 'C' with coronet above. *Possibly attributed to Baron Clinton. Base embossed 'H. RICKETT & CO' etc. Very good. NR £80-100+. (CM)*



**373. SEALED CYLINDER WINE BOTTLE.**

11ins tall, dark olive green glass. Applied double collar lip, seal reads 'LUPTON'. *Lupton house Nr Brixton. Seat of Lord Chursten. C.1800. Very good. NR £80-100+. (CM)*





**374. SEALED CYLINDER BOTTLE.** 10ins tall, **dark olive green** glass cylinder, short neck with applied lip. Shoulder seal with 'VR' & anchor. Very good. NR £60-80+. (CM)



**375. DEVON (?) SEALED CYLINDER WINE BOTTLE.** 10.75ins tall, **dark olive green** glass applied double collar lip. Seal with crest attributed to Sir Reginald Pole Carew, Devon. Very good. NR £80-120+. (CM)

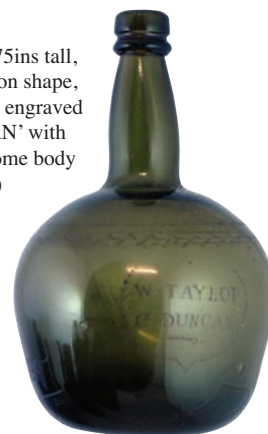


**376. MALLET FORM WINE BOTTLE.** 10.25ins tall, **dark olive green** glass, long sloping neck applied lip & base pontil. Some surface patination. NR £80-120+. (CM)

**377. ONION WINE BOTTLE.** 6.5ins tall, **dark olive green** glass, applied string rim, base pontil. 5.75ins max body width. Great transitional piece. Some surface marks. £120-150+.



**378. WINE BOTTLE.** 8.75ins tall, **mid olive green** glass, onion shape, long neck with applied lip, engraved 'W. TAYLOR/ C. DUNCAN' with dog & bird. base pontil. Some body cracks. NR £40-60+. (CM)



**379. SEALED CASE GIN BOTTLE.** 11.25ins tall, **dark olive green** glass,

applied ppig snout lip, tapering form shoulder seal with stork pictured 'J.H. HENKES'. Some surface marks/ scratches. NR £40-60+. (CM)



**380. 3 GLASS SEALS.** Dark olive green glass 'BRANCPETH' plus (2) with crests attributed to Sir Reginald Pole Carew. (3) NR £20-30+. (AB)



**381. UTILITY BOTTLE.** 6.75ins tall, **dark olive green** glass rectangular shape with bevelled corners, applied lip, base pontil. Unusual base protusion & an old label to rear. Very good. NR £40-60+.



**382. SEALED ONION WINE BOTTLE.**

7.5ins tall, **dark olive green** glass, applied string rim, base pontil. Max body width 6ins, seal reads 'ED/ JONES/ BURTON 1737'. *Previously listed incorrectly as 1733. David Burtons new 3 volume book set suggests this is most likely of Welsh origin.* Good. NR £2,000-3,000+.



**383. DATED SEALED Mallet Shape Wine Bottle.** 8.25ins tall, **dark olive green** glass, long neck with applied string rim base pontil, seal reads 'I. BULLOCK/ 1738'.

*All over body dullness. Had a quick scan through David Burtons new 3 volume set & couldn't find any reference?* NR £1,800-2,200+.

**384. DATED 1806 SEALED WINE CYLINDER.**

8.25ins tall, **dark olive green** glass, applied collar lip. Graphite pontil, large body seal reads 'COLLETT & FALKNER/ BATH/ 1806'. An extraordinarily large seal (very well struck) on a small dated cylinder. *Collett and Falkner, wine and brandy merchants, 11 Horse Street, 1781 to 1810, became 9 Horse St about 1811-25. Company moved to Southgate Street around 1830 when they later became known as Falkner and Son. There was a big fire after which the street was renamed Southgate. Collett & Falkner also used a dark aqua two piece mould sealed spirit bottle & stone jars bearing the Horse Street address are listed. Exc/A1 - as good as they ever get, without a doubt the BEST sealed cylinder has ever handled!* NR £500-600+.





# BBR Unreserved Auction Saturday 4<sup>th</sup> October

**Blg 21** doors open 9<sup>am</sup>, sale starts @ 11<sup>am</sup> **A very big sale!**

**EVERYTHING** sold as seen sale day. When hammer falls items given you for instant payment (calculation sheets available). Absentee bids accepted, additional accurate condition reports prior are very promlematic due to storage - we will always do our best.

Provenance initials in brackets: KB = Kevin Boyle, GM = Garth Morrison, Ian McKenzie  
JR = John Rowe. CM = Chris Mortimer. DD = Dudley Davidson, AB = Alan Blakeman.



1. Dundee flagon, pink top 'R & E Whiteley/ Botanical Brewers/ 30 Hill Street/ Dundee'. Good
2. Coventry Haynes Patent codd bottle 'Mayo & Rugg Ltd Earlsdon Coventry'. Good
3. Pratt coloured pot lid 'The Village Wedding'
4. Bear Hunting (KM 4) pot lid with base, 4ins diam, multicoloured 'Ross & Sons Genuine Bears Grease Perfumed 119 & 120 Bishopgate Street London'. Restored been in 2 pieces. Very rare large size (NL)
5. Consett stout bottle ch. t.t. 'Invalid Stout/ N. Elsdon Delves Lane Consett'. Buchan p.m. Good
6. Sheffield poison square shape cobalt blue glass 'This Bottle is the Property... Sheffield Corporation'
7. Early salt glaze flagon brown/ tan tiger glaze (DD)
8. Manningham cream pot, churn shape 'Ralph Willingham Queens Dairy/ Manningham'. Repair to rear base
9. Hour glass shape gin bottle, wide flared lip & pontil
10. Sealed wine bottle, seal with initial 'M' & coronet
11. Shaving cream pot lid 'Almond Shaving Cream/ Army & Navy Cooperative Society Ltd'. Good
12. Peek Freen & Cos biscuits multicol'd framed advert (JR)
13. Mix lot: Murat dumpy codd, Optrex bottle, commemorative mugs + 'E. Spooner' g.b. + ginger ale glass, Hull Brewery bottle + Palmers jug
14. Burslem Mineral Water bottle wooden stopper 'This Bottle Belongs to/ BYFS Knowley Manufactured Burslem. Good
15. Pair of salt glaze pistol flasks, Stephen green Lambeth p.m. (2) (JR)

16. Pratt coloured pot lid & base 'The Poultry Woman' (KM 338). Good
17. Forres Ginger Beer bottle 'Taylor's/ Stone/ Ginger Beer Forres' (IM)
18. 'R. Emmerson Junr Newcastle on Tyne The Doctors Stout' bottle. Good
19. Barnsley valve codd bottle 'Roseaveares/ Barnsley'. Good
20. Green Warners Safe Cure London bottle. Good
21. Worksop codd/ hamilton hybrid bottle 'J.T. Shardlow/ Worksop'. Good
22. Snuff/ Tobacco jar, cream glaze stoneware jar with tin lid. Snuff taker in relief. Good
23. Pub jug, green glaze 'Style & Winch Ltd Farmers Ale'. Doulton p.m. (DD)
24. 3 chemists rounds, all clear glass with under glass recessed labels
25. Cold cream pot lid 'Cold/ Cream/ Squire/ Chemist Oxford Street'
26. Dalbeattie g.b. 'David Newall M.P.S./ Chemist/ And Aerated Water/ Manufacturer Dalbeattie' (IM)
27. St Andrews and Cupar 2 g.b. variants 'Wilson & Co' (2) (IM)
28. Pepper sauce bottle, aqua glass faceted base (KB)
29. 5 Pratt pot lids in wooden frames (some damages)
30. Enamel sign diamond shape 'Colman's/ Mustard' with bull pictured (GM)
31. British Rail (7) 1960's - 1970's posters
32. British Rail (7) 1960's - 1970's posters
33. Indian chutney jar, natives pictured cooking & packing cases
34. Blue glass 'Southerst Sanitary Disinfectant'



35. Brown glazed stoneware casserole pot with lid, lions head to sides, lion finial to lid  
 36. Brown glazed stoneware jug, tree branch handle with grapes & vines bold relief  
 37. The Barnsley Chronicle 1897' Almanack + Bairnsla Foaks Pogmoor Almanack 1849 (2)  
 38. The Barnsley Historical Almanack Year book 1863 + Bairnsla Foaks Pogmoor Olmenack 1851 (2)  
 39. The Barnsley Almanack Historical Year Book 1865 + The Barnsla Foaks Annual Pogmoor Olmenack 1861 (2)  
 40. The Barnsley Historical Almanack Year Book 1864 + The Pogmoor Annual Olmanack 1854 (2)  
 41. Benito Mussolini circular snuff box  
 42. Oriental snuff box  
 43. Desk seal paperweight? 'Annabell Leyton Secretary to Sir Francis May governor of Hong Kong September 24th 1914' stamped to base  
 44. Painted bronze leopard  
 45. Desk seal clasped hand style  
 46. Charles Jas Fox circular snuff box  
 47. 2 jade? necklaces + 10 Chinese coins  
 48. 2 German badges + Swastika pendant + Russian medallion + elephants head tusk  
 49. Cast iron railway sign 'London Brighton & South Coast Railway'  
 50. Presentation case set of Chinese coins/ medallions  
 51. Hornby Dublo train set locomotive & 6 good wagon + track  
 52. Royal Doulton group jugs, tobacco jar, plate, tankards etc. Mainly very good (8)  
 53. Large lot of railway magazines  
 54. 6 clear glass soda syphons (6)  
 55. Enamel sign 'C.W.S Soap For All Purposes'  
 56. Group of cobalt blues: 4 poison bottles + minimax fire extinguisher + ink

57. Fishing reels 'The Maxima' + 'Paraply Star Drag' + another + Ajax cast book  
 58. Group of Bovril & Maggi Bottle + OXO trade card  
 59. Grp of Wade Whimsies, OXO cubes tin, mini Guinness bottle, railway whistle, Ainslies p/ cards etc.  
 60. 14 g.b.'s, Dale Ale bottle Halifax, Aberdeen, Dufftown, Biggleswade, Harrogate, Burton on Trent  
 61. Wymondham Corston wooden lidded crate with 5 metal topped soda syphons (5)  
 62. Barnsley Brewery co wooden lidded crate  
 63. Walkers Warrington Ales large external pub lamp!  
 64. 19 commemorative beers: Silver jubilee 1987 Cup final Commonwealth Ale etc.  
 65. Set of chemists scales in wooden cabinet  
 66. Cast iron sign 'Street & Collins Bradford 5232'  
 67. Group of books & magazines all railway related  
 68. Pratt lid + 'Walkers Dairy' jug crested ware china + Doulton bowl (good)  
 69. Group of mixed postcards (2 lots)  
 70. 'Carsons Paints and Specialities' cut-out advert  
 71. Group of bottle collecting books & magazines: Dorren Beck Bottle Collecting, E. Fletcher Marbled Bottles, Ginger Beers of Coventry  
 72. Aberdeen g.b., coloured pot lid, cough syrup bottle, Capt'n Bones tin, White Horse Whisky metal jug  
 73. 17 Carlisle pub flasks small selection illus (17)  
 74. 3 mustard jars: Dijon Grey-poupon + Moutarde De Maille etc. (3)  
 75. Secret Remedies British Medical Association book  
 76. Cobblers items, casts etc.  
 77. Pair of 'Windsor & Newton Rathbone Place London' flagons  
 78. Large set of scales cast iron & brass on wooden base







79. Shop scales white enamelled 'The Leicester Scale Co Ltd'. Good  
 80. 'Salters Improved No 50 Family Scale' on cast iron base (GM)  
 81. I Spy News Chronicle 1/- stand  
 82. Pratt pot lid: 'The Farriers'  
 83. Pratt pot lid: 'The Fisher Boy'  
 84. Doulton & Co Limited Springfield Dudley ashtray. Good  
 85. Admiralty poison bottle, cobalt blue glass. Good  
 86. 'Almond Cream/ For Shaving' pot lid  
 87. Coloured pot lid  
 88. Amber glass codd bottle 'Groves & Whitnall Ltd Salford'. Good  
 89. railway inkwell clear glass round inkwell, acid etched 'G.E.R.'  
 90. Enamel sign 'Keep Clear This Plant Automatically' etc.  
 91. 3 Helsby Creamery Cheshire cream pots, 1 minus handle  
 92. Pair of 'Annandale Dairy Co Dundee & Lockerbie' cream pots, blue & black transfers (2)  
 93. Buttercup Dairy Co cream pot, **blue top, blue transfer**. Full cow pictorial. Good  
 94. Pair of cream pots 'Croftons Stores'  
 95. Barnsley British Cooperative Society 1952-1962 glass ashtray. Good  
 96. Spotty dog rubberoid Dalmation figure + tinplate railway station + Daint Dinah Toffee tin + Soccertelle game (4)

97. Enamel sign 'Venus Soap Saves Rubbing'  
 98. Enamel sign 'Smoke Will's/ Honey Cut/ Tobacco Sold in Packets 2D'  
 99. 4 footwarmers circular in copper  
 100. 4 footwarmers, all copper (2) circular one oval, one oblong shape  
 101. 4 footwarmers, all copper, 2 circular, 2 oblong shape  
 102. 3 footwarmers, 1 copper, 2 alloy, circular & oval shape  
 103. Wooden hinged box for 48 baby bottles  
 104. Storage jar impressed 'Crosse & Blackwell Oilmen 21 Soho Square'  
 105. Doulton vase + Troika style vase  
 106. 'Burroughs Ginger Wine' cut glass decanter  
 107. Grp of shop packaging: Lucazade bottle, packet of Lux soap flakes, Lifebuoy Soap, Tobacco packets, Newberry Fruiti etc.  
 108. 2 sweet jars: Hall & Bensons  
 109. 2 sweet jars: Trebor & Cornish Butterscotch  
 110. Bundle of 1951 'Punch' magazines (loads of ads)  
 111. Postcard album  
 112. Blue glass soda syphon, acid etched 'W. Lants & Co Coventry'  
 113. Blue glass soda syphon in chrome metal stand  
 114. Lrg grp mixed glasses with adverts  
 115. Liverpool preserve jar 'Fletts Celebrated Strawberry Jam W.H. Flett Limited Liverpool'  
 116. 'The Normal Company Ltd' jar





117. 3 dumpy seltzers, 2 amber Schweppes HD Rawling  
 118. 3 g.b.'s: Duncan Flockart Edinburgh, J. Kershaw Gateshead, J. Mills London impressed (GM)  
 119. Grp mineral water bottles, 2 codd's, 2 hamiltons, 2 cylinders  
 120. Cobalt blue round bottomed cylinder  
 121. Rowntree's photo tin, lid & base both featuring a wire hanging loop. Fairly good  
 122. Vaseform tin featuring Pickwick Papers characters. Some wear to all sides  
 123. 6 Commemorative tins, various sizes, Thornes Toffee, cadbury's etc. Various conditions  
 124. Pair of cigarette tins, Fodia & Cooke's Oxford Memory. Quite good (2)

**More lots will be added here.**

133. Mixed lot: Clarice Cliff plate & shaker, Arrowsmiths water jug, Worthington trays, Lorimers pot lid etc. (15)  
 134. L'pool t.t. handled jar, 'College' t.t. tobacco jar, 4 pub jugs, Ovaltine jug, 2 g.b.'s, pict. codd etc. (12)  
 135. Original B Railways Eastern region Clacton on Sea poster dated 1961, mounted on linen  
 136. American mantle clock 22 ins tall 'Ansonia Clock Co New York'. WO. Good  
 137. Grp 4 framed Guinness adverts featuring toucan & zoo animals etc.  
 138. Captain Morgan Rum mirror + Grand National print 'The Canal turn' + 'G. National Winners 1933-1963' print (3)  
 139. 4 Grand National jugs: Race Void, Manifesto, Earth Summit & Amberleigh House. Good

140. 10 pub jugs: VAT 69, Buchanans, White Horse, Glenfiddich & M & B etc.  
 141. Lrg quantity of beer mats  
 142. Tray of shop dummy bottles White Label Whisky, Long John Rum, Martell, Haigs etc.  
 143. 3 Pickwick character jugs & Dewars wooden tray (4)  
 144. Boxed set of brandy glasses Grand National winners + boxed decanter, plate & camera. Good (4)  
 145. Mirror 'Peter Walker Lager Beer'  
 146. 8 pub jugs, Bells, Haig, B.O.A.C, Finlandia, Glenlivet & Bass etc.  
 147. 7 pub jugs, Tennents, Hamlet, Bass, Haig, Glenfarclas, Carling & Grants  
 148. 8 pub jugs, Passport, Bells, J & B, Glenmorangie, Macallan & Johnnie Walker  
 149. 8 brass barrel taps: Butlers, M & B, Bass etc.  
 150. Black & White Whisky badges  
 151. Bottle openers in shape of mountaineers Caribinas  
 152. 6 lrg tins: Nutalls Mintoies, Boy Blue Toffees, Seidlitz Powders, Blue Bird Toffee, Colmans Mustard & Williams Toffee  
 153. Tins grp: Thornes, Boy Blue Toffee, Mansion Polish, Hunley & Palmers caskett + scissors, cigarettes  
 154. Tins grp: Thornes, Mansion Polish, Radiance toffee, Chelsea Boot Polish, Mackintosh, Mick Mcquaid etc.  
 155. 3 books: Biscuit tins 1868-1939 + Lyles Advertising Antiques + Robert Opie Sweet Memories  
 156. Mix grp: 6 railway wagons with averts + Hickton Nottingham g.b. + ashtrays

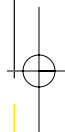




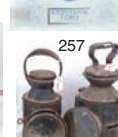
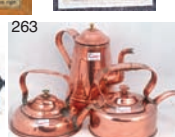
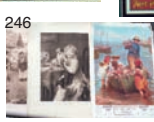
170. Adverts grp: Dewars White Label Whisky, framed Bells Whisky labels, Besson, National Boiler Insurance co, Electric Shock poster + reward poster etc. (9)  
 171. Durham & Sunderland g.b. 'W.H. Wood Stone Nector Ginger'  
 172. Morpeth g.b. 'Albert M. Loades George & dragon Yard Morpeth' (KB)  
 173. 2 Edinburgh g.b.'s, J.T. Leighton & Co Edinburgh + A.S. McOnie Edinburgh. Good  
 174. 2 Edinburgh g.b.'s, Forsyth & Forrest + Aerated Water Manufacturing Co Works  
 175. Dublin g.b. M Nugent Essex St Dublin The Dolphin? Hotel (KB)  
 176. 2 g.b.'s, Bewick Brothers Blaydon on Tyne + E.D. Turnbull Consett (KB)  
 177. Stout bottle, John Buchanan hanover Square Special Stout Brewery Newcastle on Tyne (KB)  
 178. Scottish g.b., A. Turner Chemist Dumfries/turners Stone Ginger Beer  
 179. Blackburn slab seal g.b. 'William Carr Blackburn'. Good  
 180. Matchstriker, 'Old Priory Old Scotch whisky/ Robt Brown Ltd Glasgow'  
 181. Boots inhaler, 'The hygienic inhaler Boots Dispensing Family Chemist'. Good  
 182. Matchstriker, 'Bryant/ And/ May's/ Matches'  
 183. Brass ashtray, 'Johannis King of Natural table Waters'  
 184. 2 pub jugs: 'Brains/ "Worth Hunting For" + 'Simonds Reading Pale Ales & Stouts '  
 185. Pair of cream jugs: Websters Fresh Dairy Cream Halifax + Hipper Holme  
 186. Grp of small poisons, green & blue glass (12)  
 187. Mix grp: inks, mineral water bottles, Benbows Dog Mixture, perfumes, jar etc.  
 188. T'paste pot lid 'Cherry T'paste Lorimer & Co'  
 189. T'paste pot lid 'Cherry T'paste Lorimer & Co'  
 190. 3 ointment pots: 'Poor Mans friend' 3 variants

178. John Gosnell & Co Toothpaste pot lid + 'S Maw Son & Sons Shaving Cream' pot lid  
 179. 'Saunders Areca Nut Toothpaste L'pool' pot lid  
 180. 'Morris's Imperial Eye Ointment' sml pot lid  
 181. 3 baby feeder tops, 'S. Maw Son & Thompson' + 'Mathers' & 'The Alexandra'  
 182. 'Creme Lucullusy/ The New Savoury Puree' pot (GM)  
 183. Miniature urinal transferred with crown t.m. (GM)  
 184. 2 pie funnels: 'Rowlands Hygienic Patent' + elephant shape (GM)  
 185. 'Grimwades Perfection' pie funnel (GM)  
 186. 'The Iglodine Nasal Douche' (GM)  
 187. Ceramic weight 'Aldgate E.C. Weighing Machinists Day & Millward Limited' (GM)  
 188. 'Hoobs Antitannic Infuser' + 'The Gladiator' + 'Clarks Patent Night Light' dish (GM)  
 189. Mintons Fish Teapot (boxed) + 8 Edwin M Knowles boxed plates - All nursery rhyme themes  
 190. Guinness circular tin tray toucan holding bottle 'Opening Time is Guinness time'  
 191. Guinness circular tin tray 'Guinness is Goodforia'  
 192. Guinness circular tin tray 'My Goodness My Guinness' toucan with glass  
 193. 10 limited edition boxed Guinness badges  
 194. Guinness clock 'Draught Guinness' battery operated  
 195. Guinness circular clock + 2 Guinness hologram signs (3)  
 196. Guinness jug & tankard 'My Goodness My Guinness'  
 197. Guinness playing cards 12 packs includes (2) twin packs  
 198. 3 circular tin trays: 'Guinness for Strength' Guinness Him Strong' 'Guinness When You're Tired'  
 199. Guinness grp: wristwatch, mini bottle, cufflinks, bottle openers, badges, thimble etc.





221. 4 g.b's: George chiles Tenby, Harrington Southend on Sea, Qualtrough Douglas + Electric Mineral Water Co impressed g.b.
222. 4 g.b's: Simpson Walkden, D.P.W. Jones Folkestone & Dover, G. Viney Chiswick impressed g.b. + Holland & Co Chippenham
223. Ammonia bottle 'Plynine Coy Ltd Household Ammonia'
224. Disinfector bottle 'Taylors/ Rolyat/ Disinfector/ Liverpool/ England
225. Doulton jug, brown top lower tan salt glaze with raised willow pattern in blue with silver rim. V good
226. 11 Barnsley postcards
227. Bos Whisky mirror 'The Famous/ "BOS"/ Scotch Whisky Peason & Co Darlington'
228. Cork Distillers Co Ltd Whisky framed mirror
229. Auld Lang Syne Whisky jug 3 men sat drinking pictured to front 'Auld Lang Syne Offilers Fine Ales' to rear. Good
230. Jeroboam Whisky jug 'Jeroboam The Royal Blend Whisky'. Good
231. 'Hendrys Standard Aerated Water Works Abbey St/ Edinburgh Dandelion Porter' tan lip s.s. Good
232. 'Hendrys Standard Aerated Water Works Abbey St/ Edinburgh' houp glass. Good
233. 2 Portsmouth jars large & small 'Bradley & Bliss Ltd Reading and Portsmouth'
234. Medical grp: cased medicine glass + (3) eye baths + medicine spoon + syringe, Boots Ointment
235. Poisons grp 'My - T - fine' amber glass bottle + 5 small poisons + large round shouldered poison + 2 Castor oil bottles (9)
236. Poisons grp: 4 flat backed hexagonals + 3 others
237. Framed showcard 'Desicated Soup/ Tomato/ Fredk King & Co Ltd Manufacturers Belfast & London'
238. Lyons Tea framed advert multicoloured pictorial



ads paper on tin Lyons Blue Label tea & Lyons Jellies

239. 'Dandy Shandy' framed showcard

240. Pears Soap framed multicoloured advert

241. Nestlé's Swiss Milk multicoloured framed advert 2 cats pictured

242. 'Ceylindo Tea' multicoloured print calendar 1911 entitled 'The Gamblers International Stores'

243. 'Ceylindo Tea' multicoloured print 1910 calendar entitled 'Rule Britannia' international stores

244. 'Ceylindo Tea' multicoloured print 1914 calendar entitled "Cobbler Cobbler Mend My Shoe" international stores

245. 'Ceylindo Tea' multicoloured print 1917 calendar entitled "Goodnight" international stores

246. 'Ceylindo Tea' multicoloured print 1912 calendar entitled "Monsters of the Deep" + engraving entitled 'The little Doctor' + another

247. 15 g.b's: Warrington, Carlisle, Dufftown, Cardiff, Whitehaven, Aberdeen, Blackpool, Castleford etc.

248. Grp of sauce bottles

249. Grp of sauce bottles some labelled some coloured

250. Grp of crested china pieces, RAC badge, eyebath, razor blade pkts, needle tins

251. Mix grp: (2) boxed Dimples baby feeders, Blue castor oil bottles, crested china pieces, poisons, eyebath, car badges, pot lid, pie funnel, tins, ashtray etc.

252. 3 adverts 'Red Ring Series Glycerine Lemon Honey' + 'Crown Brand Health Salt' + 'Crown Brand Caustic Soda'

253. Box of postcards mainly topographical

254. Tray of beer mats + 2 boxes of pump clips & glasses

255. Mix grp: Bunnykins plate, tureen, Copeland Spode plate, cottage teapot, Noddy eggcup etc.

256. Mix grp: mineral water bottles, salt & pepper pots, tile, jugs, lamp, vase etc.

257. 2 railway lamps

258. 3 telephones inc. candlestick type

259. Pair of Doulton jugs, brown & tan salt glaze with face masks

260. Dewars Whisky jug, green top, lower tan salt glaze

261. Doulton jug, green top lower tan salt glaze

262. Salt glaze tankard raised hunting motifs, drinkers & smokers

263. 2 copper kettles & copper coffee pot

264. Bunnykins grp: Online Bunnykins with box, Be Prepared figure, skater figure + pipe bowl heads

265. 4 small footwarmers advertising whisky. Burns Cottage, Old Rarity, Sy Sakara & Glenlivet

266. 4 medium footwarmers, Linkwood Highland Malt, Burns Cottage, Findlater Castle, De Luxe Scotch Whisky

267. Lrg, med & sml footwarmers, A Tholl rose, Glenfiddich & Old Rarity (3)

268. 4 sml footwarmers, McCallums, Jockys Drappie, Blackford Scotland etc.

269. Sheffield framed calendar 1936 'H. Whitham Coal Dealer and Removal Contractor 93 Rabey St Pitsmoor Sheffield'

270. Dairy related framed photograph, gent with dairy cart pictured

271. 'Fry's Choice Chocolates' glass cabinet door with acid etched lettering & coat of arms

272. 'Maypole Dairy' multicoloured framed print signed Tom CVRR

273. Matchbox models of Yesteryear. All boxed, 6 vans, Model T.Ford Layland Lorry Stephenson's rocket + collectors album (9)

274. Matchbox models of Yesteryear, vans, cars, fire engine, AEC bus etc. + collectors album (9)

275. Matchbox models of Yesteryear, 'Days Gone' vans & lorries + Corgi Thornycroft van (10)

276. Matchbox models of Yesteryear 'Days Gone'





vans & lorries + Corgi Thornycroft lorry (10)  
**277.** Matchbox '75' series. All boxed, petrol tanker, ambulance, Security truck, Cement truck, 57 T Bird + Helicopter Blaze Buster etc. (10)  
**278.** Wooden till, pull out drawer with bell. Very good  
**279.** 3 octagonal inks, 1 full of seed bubbles, 1 with amber swirls & 1 opaque with swirls  
**280.** Amber glass circular ink  
**281.** Cottage ink, unembossed with amber swirls  
**282.** 2 boat shape inks, pale amber & pale blue glass  
**283.** Amber glass poison, embossed 'Strychnine' + rat poison with paper label  
**284.** Large amber glass demijohn  
**285.** 2 flagons, grey/ green slip glaze  
**286.** Brown glazed water filter 'W. Kay Navigation Street birmingham' with tap  
**287.** Locks scales + footwarmer + 'Tala' tin measure + tin post office savings bank + WW2 bicycle torch  
**288.** 4 BBR UK SummerNational t-shirts  
**289.** Mixed grp: 'Whitbreads Ale & Stout' jug, 5 g.b's + buttercrook, Charlotte Rhead vase + Gormet boila  
**290.** Large aqua glass demijohn  
**291.** Glass fronted display cabinet with wooden shelves  
**292.** Display cabinet with wooden shelves  
**293.** Display cabinet with wooden shelves  
**294.** 10 mounted multicoloured magazine inserts advertising, Lifebuoy Soap, Monkey Brand, Vim, Sunlight Soap & Royal Vinola  
**295.** Framed Bruce Bairnsfather print + Charlie Chaplin dancing figure + Hale Brothers Sheffield fishing hooks display card + mag insert & pencil adverts  
**296.** Lurpak collection, 2 toast racks, 4 egg cups + butter dish (7) Good  
**297.** Mix pottery grp: 6 pieces of Royal Albert china + character jug, cut-glass dish, 3 pieces of Aynsley

cottage china + cow creamer & vase  
**298.** 2 cut-glass decanters square shape & ships decanter shape  
**299.** 3 Beswick horses + Beswick blue tit + Hornsea pottery piece 'Fauna Royal'  
**300.** Lladro & Nao figures, girl with cello + boy & girl + 2 polar bears, duck & lady (6)  
**301.** Grp of 13 oriental figures in green, blue, yellow glaze  
**302.** Mix grp mainly pottery 8 pieces of Pratt type pottery in red & black glaze + Coalport Christmas 1978 plate + Wentworth Church plate etc.  
**303.** 'Buchanans Black & White Scotch Whisky' 4 shop dummy bottles, wired on cap types  
**304.** 'Grants Scotch Whisky' lrg, med & sml jugs + Halleys Comet Scotch whisky jug + dolphin jug + 'Chandy' plastic figure. Good (6)  
**305.** Pub jug blue top, blue transfer 'Tiffen Aerated Water Carlisle' for restoration  
**306.** Grp of damaged pub jugs for restoration 'Butlers Wolverhampton Ales (all the pieces) + 'Manchester Brewery Company Ltd' brewery buildings pictured  
**307.** Grp of damaged pub jugs 'Fred Hirst Todmorden' + 'Dewars' + 'Arrowsmiths Glenlivet Blend' + 'Robertsons Yellow Label' (10)  
**308.** 3 Grand National jugs 'Little Poliver' + 'Seagram' + 'Party Politics'  
**309.** Grp of shop dummy whisky/ gin bottles 'Haigs', 'Long John', 'Mortons Liqueur', 'Johnnie Walker', 'Gordons Gin' & 'Dewars White Label' (11)  
**310.** 3 porter bottles: 'J.C. Armstrong Horncastle' + 'R. Reed' + 'AJ & T Smith Doncaster'  
**311.** 3 porter bottles: 'J. Lunn & Co Barton' + 'T. Bromley Goole' + G. Porter Richmond'  
**312.** 3 Lincoln porter bottles: 'W. Brooks Lincoln Bitter Beer' + 'TN Catley Lincoln' + 'J. Budd Lincoln'  
**313.** 2 Pratt ware plates both with bird subjects. Good







314. Loving cup, blue & white decoration 'The Farmers Arms' one side verse to the other  
 315. 2 nursery rhyme mugs, Jack & Jill + Little Bo Beep. Good  
 316. 'Cheshire Cheese' sml jug & dish. Good  
 317. 'Cardiff Exhibition 1896' acid etched clear glass jug. Good  
 318. 3 commemorative mugs V.R. 1837-1897 + Coronation May 12th 1937 + Silver Jubilee 1935  
 319. 2 pub mugs, George Inn Somerset + The Kings Arms Chigwell. Good (2)  
 320. Grp of glassware, 6 drinking glasses, vases. (11)  
 321. Pie funnel? little girl sat in a pie  
 322. Bunnykins 'Sleepy Time' figure + rabbit figure. Good (2)  
 323. 3 cat figures (2) royal Doulton examples. Good  
 324. Beswick? ram figure  
 325. Pair of rabbit salt & pepper pots  
 326. Green glazed reclining baby figure  
 327. Scottie Dog money box? + terrier dog figure  
 328. Plumouth double sided enamel sign 'Agent for Mortimer Cleaner Plymouth' (GM)  
 329. Boxed typewriter 'Lambert' maker  
 330. Cased saxophone 'Dearman' makers mark  
 331. Mix breweriana grp: 4 pub jugs, Guinness condiment set, Brewhouse Celebration Ale bottle in tin + ashtrays etc.  
 332. 10 complete clay pipes (2) crop & claw + tree trunk + thistle + one stamped Raleigh (10)  
 333. Grp of clay pipes, some head bowls, Nelson, Ladies head, witch, soldier + hand holding glass (11)  
 334. Grp of clay pipes, some head bowls (2) King Edward head bowls, crop & claw, early claypipe + mice on bowl example  
 335. Mix bottle grp: salad oils, Essolube, Tizer, ammonia, Schwepps etc. (12)  
 336. 3 Miller Antiques Price Guides + beer mats, 2 pocket wine books + Oblox pkts etc.  
 337. Mix lot: J.H. Jones



- Hanley flagon, Black & White pub jug + Glenlivet pub jug, jars + curry paste jar etc. (13)  
 338. 'Eno's Fruit Salt' framed advert + Metropolitan Life Insurance Company First Aid at Home framed advert  
 339. 'Lyons Tea' tin 30 by 3ins shelf edge sign  
 340. Borax Extract of Soap tin sign 24 by 7ins  
 341. Sandemans Port framed advert  
 342. 2 Pirelli calendars 1984 & 1985  
 343. British Express Dairy pictorial enamel sign locomotive pictured  
 344. 3 Royal Mail framed stamps  
 345. Sheffield Telegraph enamel sign  
 346. Turog framed advert 'The Turog Brown flour Company Cardiff'  
 347. Johnnie Walker framed advert cricket, fishing & golfing scenes  
 348. Chulmleigh 2 framed posters Great Jubilee Year 1887 Great Percuro R.J. joint Chemist Chulmleigh  
 349. Guinness grp: badges, mini bottles, keyrings, thimbles etc.  
 350. Guinness grp: clock, brush, golf tees, peg board, Corgi steam lorry, spoons, mini bottles  
 351. 2 Guinness clocks 'Guinness Time' battery operated  
 352. Guinness bar top item + money box etc.  
 353. 2 Guinness clocks 'opening Time is Guinness Time' battery operated  
 354. 3 circular tin trays 'Lovely Day for a Guinness' + 'Guinness Stout'  
 355. Guinness circular tin tray 'Thirst Prize! Guinness'  
 356. Guinness circular tin tray 'Guinness Goodness The Order of The Day'  
 357. Marcella Cigars framed mirror soldiers pictured  
 358. Medicine bottle 'Dr Lalor's Phosphodyne Price 4/6' + 'Dr A.



Oidtmann' medicine bottle  
syringe embossed + one

embossed C.P with arrow

**359.** Admiralty poison bottle cobalt blue glass with  
paper label (not recorded?)

**360.** Sealed bottle (French cure for gout) large size

**361.** Iglodine Co Ltd basket covered flagon much  
favoured by cyclists in the 1920's

**362.** Grp of lamp items 6 shades & 4 chimneys (10)

**363.** Mallet wine bottle c.1740-50, overall full body  
sheen, sml rim flake. Sharpe base pontil. Superb  
early English piece

**364.** Dumpy shape wine bottle some body  
patination c.1770-80. Base pontil

**365.** Wine bottle, long neck with applied string rim.  
Prominent base pontil

**366.** Dutch onion wine bottle + aqua glass onion base  
embossed 'Amsterdam' + onion bottle embossed  
'Cusenier' + onion bottle with seal '1839'

**367.** 2 Dutch wine bottles with long necks. Both  
pontilled. Good

**368.** Sealed wine bottle seal with 'G.R.H./ & Co' &  
embossed 'George V Coronation 1911'. Good

**369.** Sealed wine bottle with armorial seal. Good

**370.** 2 sealed cylinder wine bottles seals read 'Chateau  
Lafite Grand Vin 1874'. (2) Good

**371.** 3 sealed cylinder wine bottles all with armorial  
seals

**372.** 3 sealed cylinder wine bottles 'Vieux Cognac' +  
'Bitter Segrestat' & 'Auguste Runel A Gett'

**373.** Dundee early labelled & embossed Guinness  
bottle with swing stopper + 'Moet Chandon  
Champagne' bottle Centenary 1805-1935 + Simon  
Brothers labelled wine bottle dated 1896. A good  
group (3)

**374.** Grp of 12 wine bottles, some with labels

**375.** Grp of 12 mainly wine bottles

**376.** Poisons grp, dumpy shape rectangular shape,  
hexagonal etc. in cobalt blue, green & aqua glass (12)

**377.** Poisons grp, lrg hexagonal + 'Sir William  
Burnetts Disinfectant' + sulpholine + green  
hexagonals one with label etc. (12)

**378.** Mix bottle grp: amber 'Leigh & Co Salford'  
cylinder + 'Radcliffe' round bottomed cylinder +  
'Maldon' g.b. + Leigh & co hamilton + Tippers Vitalis  
bottle (12)

**379.** 'John Gosnell Cherry Toothpaste' pot lid. Very  
good

**380.** Pair of Torquay ware inkwells, both sith stoppers

**381.** 3 cream pots (2) 'Wigtownshire Creamery  
Stranraer' + 'Hailwoods Manchester'. Good

**382.** 3 clear glass rectangular paper weights, Premier  
Ironworks Deptford, bells United Asbestos Co London  
& Taylor & Sons Portsmouth

**383.** 2 clear glass circular paper weights 'Maybury &  
Co Newport' + 'The Belfast Ropework Company'

**384.** 'Big Tree' bottle + Masons jar & blue glass vase

**385.** 5 wine bottles

**386.** Amber codd 'Groves & Whithnall Salford'. Good

**387.** Mix bottles grp: mineral water cylinders  
'Carlisle, Atherton, Bolton, Blackburn, Langley  
Bridge etc. (18)

**388.** Mix bottles grp: mainly mineral waters cylinders,  
Carlisle, Blackburn, Warwick, Sailsbury, Burnley,  
Warrington

**389.** 3 flagons: 'Old No 12 Sheffield' "Richard  
Dobson Leyburn" 'Kings Head Romford' + lrg poison  
bottle & 'W A Gilbey Wine Merchants' barrel (5)

**390.** Mix grp: lrg 'Blackburn & Glasgow' jar,  
appolinaris bottle, LMS Derby flagon, black & red  
glaze jar & mercury? jars (6)

**391.** Mix grp: French double syphon, Worthington  
tray, Keysell Ludlow flagon, John Smith Ulverston





flagon + vase with blue & white floral design

**392.** Dangerous Skating Pratt pot lid (KM 296), 3ins diam, sml bottom flange chip, good colour

**393.** Shakespeares House Henley St Stratford on Avon Pratt lid (KM 226) 4ins diam, minor nibbles under top edge

**394.** Examining the Nets Pratt lid (KM 61) 4ins diam. Very good

**395.** Walmer Castle Pratt lid (KM 53) 4ins diam. Good

**396.** Shottery the Residence of Anne Hathaway Pratt lid (KM 228) 4ins diam. Good

**397.** The Snowdrift Pratt lid & base (KM 267) 4.25ins diam. Minor bottom flange chip

**398.** The Shrimpers Pratt lid (KM 68) 4ins diam, minor bottom flange chip

**399.** Good Dog Pratt lid & base (KM 260) 4.75ins diam. Bottom flange chips

**400.** Country Quarters Pratt lid (KM 273) 4.75ins diam. Good

**401.** Bear Attacked by Dogs Pratt lid (KM 2) 3.25ins diam. Some restoration

**402.** The Wolf & The Lamb Pratt lid (KM 343) 4ins diam

**403.** J. Crossmith Cherry Toothpaste pot lid, 3.25ins diam. Good

**404.** Vinola Toothpaste oblong lid & base 2.5ins, pink transfer, Very good

**405.** Lady Boy & Goats (KM 276) coloured pot lid, 3ins diam. Good

**406.** Contrast (KM 261) coloured pot lid, 4ins diam. Hairline (NL)

**407.** J.J Matthias Toothpaste pot lid, 3.25ins. V good

**408.** Cherry Toothpaste pot lid, cherries pictorial. Chip & hairline to flange

**409.** 'The Oakhill Brewery Company Limited' circular tin sign + 'Greene King' enamel sign

**410.** Enamel signs 'Mex Motor Spirit', Tungstone Batteries', 'Big Tree Burgundy', warning sign & No 3 sign

**411.** Ink stand on metal stand, stamped 'Hayne Suspended inkwell Universal Speciality Co 15 Chambers St New York Patented May 18-87' (JR)

**412.** Fish jug impressed 'The Great Dunlop Tyre Deal of Five Million April 13 1896 May 13th' (JR)

**413.** Salt glaze jar with relief decoration + Black & White pub jug, ashtray, commemorative mug "Roderick Viscount Tarbat Born Oct 24 1904" (JR)

**414.** Mix grp: bisque figure, kingfisher figure, muppet show car, pepper pot, trumpet player figure, jug etc. (JR)

**415.** Biscuit tin Geo Bassestt Sheffield + teapot stand (Coventry) & Kendal matchstriker (JR)

**416.** Dumpy codd bottle 'Murat & Co Manchester'

**417.** Low Son & Haydon cold cream pot lid & base 2.75ins. Some restoration (NL)

**418.** Pratt pot lid 'Persuasion' KM (125) 4.25ins diam

**419.** Lockable wooden display case 41 by 46.5ins fitted with 9 glass shelves

**420.** Wooden display case with locable glass door with key 46.5 by 41ins, fitted with 8 glass shelves

**421.** Lrg quantity of music sheets, books, Royal family magazines etc.

**422.** 3 presentation cases of thimbles (2) water colours framed picture post 1946 + Union Jack flag

**423.** Lrg quantity of books, magazines, booklets & pamphlets etc.

**424.** Lrg quantity of books, magazines, booklets & pamphlets etc.

**425.** Barnsley Co-op tea caddy tin June 1953 + Bordens Richer Malted Milk mixer jug (3) + Gateshead Codd bottle. Good\

**426.** Vigoral mug with white glaze with coloured carnations decoration. Good

**427.** Brown glazed stoneware lrg footwarmer

**428.** Brown glazed stoneware jug. Bold relief decoration, tree branch handle, grapes & vines, cherub to front

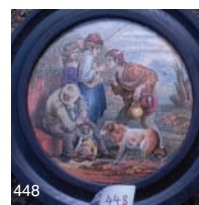
**429.** Portmerion mug 'Burgoyne Burbidges & Cos Cherry Toothpaste' + Irish labelled Guinness bottle (2)

**430.** Qty of cigarette cards + stamp album

**431.** Pair of binoculars in leather case

**432.** Galashiels g.b.? bottle 'James Beveridge Wine Merchant Market Street/ Galashiels' (IM)





**443. Doulton bowl**  
3.75ins tall, relief

decoration featuring rabbit & tortoise in blue on green glazed ground. Doulton Lambeth. Good

**434. Schweppes ashtray/ bowl, blue & white willow pattern 'Schweppes Table Waters Lemon Squash'**

**435. Lrg quantity of pot lid bases. A lot (KB)**

**436. Mansfield slab seal flagon 'J.H. hopewell & Son Wine & Spirit Merchants/ Mansfield'. Good**

**437. 'Siloith Mineral Water Company' aqua glass round bottomed cylinder. Very good**

**438. Green codd 'The Scarboro & Whitby Brewery'. 60z size. Very good.**

**439. 'Grape Fruit Sparkling Drink' Blue top blue transfer. Very good.**

**440. The Dainty muff warmer. Very good.**

**441. Horners Cylindrical Cream pot purple transfer 'Horners/ Devonshire/ Clotted/ Cream'**

**442. 2 lead tobacco jars both with masons symbols in relief**

**443. Green codd bottle 'J. W. Bright/ Pure Waters Rushden'. 10oz size. Very good**

**444. Players Please pub jug. Good**

**445. Cream pot, blue top, blue transferred 'Golden Pastures thick Rich Cream Chard'. Good**

**446. Cream pot, green glaze 'Use/**

**Alliance/ Milk'**

**447. Pratt lid in wooden frame**

**448. Rock Blue bottle, blue top, blue transfer 'Rock Blue W. R. Hatton & Sons Ltd Wormwood Scrubs London W'**

**449. 3 Grand National jugs 'Lord Gyllene' + 'Papillion' + 'Monty's Pass' (3) Good**

**450. 6 pub jugs: Johnnie Walker, Great Macaulay, China Fernet, The Scotch Malt Whisky Society, Ryder Cup '95 + Abbots Choice**

**451. 6 pub jugs: Jameson, Dandie Dinmont, WS, China Fernet, Milords & Glen Morangie**

**452. Reddish Brewery Stockport brass beer tray. 12ins diam 'Richard Clarke & Co Ltd/ Jaguar Ales'. Large jaguar pictorial to centre**

**453. Wrights Ropes Birmingham pressed brass dish. 4ins diam, sticky label to top - should clean off**

**454. Four early stoneware inks. Tallest 3.7ins. Fine t.t. sprigged example, another with 3 lions heads. (4)**

**455. Robust early sprigged hunting jug - greyhound handle plus salt glaze hot water bottle sprigs around filling hole & impressed instructions (2)**



443 & 438

## FINAL SAT LISTING

There will be at least 500 lots on the Saturday.

More pictures & words can be obtained from BBR

email: [sales@onlinebbr.com](mailto:sales@onlinebbr.com)

or on Facebook 'BBR Auctions'

or off BBR's website: [www.onlinebbr.com](http://www.onlinebbr.com)

## BBR's 4 2015 w/e events

BBR's WinterNational Jan 31 & Feb 1 • Easter Extravaganza April 25 & 26

24th UK SummerNational July 4 & 5 • Autumn Extravaganza Oct 3 & 4

# Notes

*email:* **sale@onlinebbr.com**  
**www.onlinebbr.com**

**Elsecar Antique Centre** open 7 days a week 10am - 5pm  
Upcoming auction lots on display in BBR's large green cabinets on the left.

## BBR Terms & Conditions

### CATALOGUE CONDITION TERMS:

As much care as is practicably possible is given to descriptions. Many items are of an age or nature precluding their being in pristine condition. We give serious consideration to concerns brought to our attention but reserve the right to disagree. Any additional information is generally mentioned before bidding begins but it is often not possible to contact absentee bidders at this point.

**We are always happy to answer questions before a sale but it is your responsibility to reassure yourself before purchase.**

Generally we will indicate our judgement of lots quality & condition, giving due consideration to age & rarity. For guidance purposes only the following terms are used to give a feel of this judgement.

**Cleaned / Restored:** An object has been subjected to some restoration. Typically with glass items surface may appear tumbled or dipped, to remove unsightly patina or chips, or restored with resin. A ceramic item may have had portions replaced or re-glued. We recommend you examine an item or telephone for AB's assessment of the extent of such. Cat. descriptions may make reference to damage or restoration but omission of such does **NOT** imply a lot is free from defects, nor does a reference to a defect imply absence of others.

**Good:** We judge it to be a good example, displays well, minus overtly unsightly damage. An item that is not pristine with signs of use & age - might include scratches, tears, surface faults.

**Very Good:** The item displays minor signs of wear, apparent on close inspection. This may include inconsequential chips or flaws, some corrosion to metal parts, or minor damage in unseen area (*ie base or rear*).

**Excellent/ A1:** An item as near to possible pristine, taking into account age. A bottle might for instance have base wear but full body sheen & strong embossing - no chips or cracks. Any time of manufacture flaws or patina of age in this instance deemed either part of the character, or not detracting.

### IN SHORT

**Many items are of an age/ nature precluding their being in pristine condition. Some catalogue descriptions may refer to damage/ & or restoration. Omission of such does not imply a lot is free from defects, nor does any reference to a particular defect imply the absence of others.**

### IMPORTANT:

**No statement in this catalogue shall be deemed a warranty, representation or assumption of liability in respect of date, size, condition, quality, importance or provenance. Ultimate judge, & onus, is with the buyer.**

### BIDDING

The highest bidder is deemed the purchaser. Advances on each lot determined by the Auctioneer.

### BIDDING FOR SOMEONE ELSE?

**If you intend to purchase items for another person it is important you obtain a SEPARATE bidding number.**

### POSTAL BIDDING

Performed on behalf of absent buyers to buy items as cheaply as possible competing with other bids. No charge for this.

### POSTAL BID SHEETS

Tied bids - the first to arrive secures. This can result in bidding the same price as someone else but **NOT** securing. It is in your best interest to return forms soon as possible. **If you tel or fax bids through you MUST ALSO post off the bidding form, even though it may arrive after the sale.**

### ESTIMATES

Estimates are purely a guide - taking into account condition, rarity, & current market interests. Particular rarities, highly desirable, or unusual items can, & often do, exceed estimates.

### TELEPHONE BIDDING

**STARTS AT £200+, due to staffing logistics.**

### RESERVES

'NR' indicates lots **with NO RESERVE.**

### PAYMENT

Tel/ postal/ fax & floor bids are a legally binding contract. Purchases to be paid before taken away. Cheques to BBR Auctions. **Overdue accounts charged 3% after 21 days.**

### CREDIT CARD PAYMENTS

BBR accepts: **Visa, MasterCard, Visa Delta & Switch.**

Renegotiated bank charges now just a 3% levy for this.

**You must complete your credit card information on the postal bid sheet - inc. EXPIRY DATE & ISSUE No. & issue date for a Switch card.**

### POSTAGE

Postal purchasers **MUST** advise how they wish items sending. Full p & p costs borne by purchaser. Following a sale we pack, weigh, & invoice for total amount, inc. p & p.

### POSTAL BUYERS

Packing & weighing can take 1 week to complete.

### BBR PACKING

**Generally our costs are much less than half competitors - such as Mailbox etc.** We try to keep costs low: packing time & materials used. We have extensive experience with all manner of shapes, sizes, & fragility, which may require special boxes! Very bulky or heavy items we suggest carriers rather than Parcel Force. If you have a preferential carrier **please advise when forwarding bids.**

### INSURANCE

BBR can insure goods in transit **IF REQUESTED. UK PO rates:** Extra insurance up to £1,000 goods value, £3.00 up to £2,500 value. **NOT** done unless specifically requested **at time of bidding. Please familiarise yourself with P.O. terms & conditions of insurance.**

### OVERSEAS PURCHASERS

Insuring goods requires declaration of **FULL** value. You decide disadvantages/ advantages regarding customs - & advise (on bidding sheet).

**AGENTS** In all cases BBR act only as agents between Vendor & Purchaser.

**COMMISSION** 15% buyers premium on hammer + vat.

### Bidding Increments

**UP TO £50** rising in bids of £2, £5, £7, £10 etc.

**After £50** bids rise in £5 steps. **After £100** bids rise by £10. **After £200** bids rise by £20, £50, £70. **After £500** bids rise in £50 steps. **After £1,000** bids rise in £100 steps or **ALL** at the auctioneers discretion.

**Want additional information about any lot - just tel. BBR:**

**01226 745156 or email: alan@onlinebbr.com**



**BBR**  
AUCTIONS

# Autumn Extravaganza

the **LARGEST** specialist quarterly event of its type in Europe

**Saturday 4 Oct** 500+ lot Unreserved Auction

SAT. Auc.: Doors 9am Auc. 11am  
SUN. Auc. 11am E.E. 8.30am £5.10am £2

**Sunday 5** MAJOR cat'd Auc. + **BIG** Show

120-150+  
stalls from  
all over  
the UK

Most items offered with NO reserve



upcoming major  
teakettle inks grouping

covering most categories



run of 4  
Auc. cats.  
£20 UK  
Paypal OR  
visit BBR  
website



SATURDAY Auc.  
**BEST  
ever**  
inc. 200+ good,  
single item, lots

Future BBR events: Oct 4 & 5 2014 • Jan 31 & Feb 1 2015 • Apr 25 & 26 2015 ALL worth  
travelling from anywhere worldwide (1 hr M6 Int'l Airport) Planning ahead: 2015 SummerNational July 4 & 5

BBR, Elsecar Heritage Centre, Barnsley, S. Yorks., S74 8HJ, England tel: 01226 745156 email: sales@onlinebbr.com



**BBR Auctions, Elsecar Heritage Centre**  
**Barnsley, S. Yorks, S74 8HJ**    *tel:* **01226 745156**  
*email:* **sales@onlinebbr.com**    **www.onlinebbr.com**