

# Antique Bottles, Pot Lids & Advertising

BBR's 2014  
Summer  
National  
Auction



Ginger beers Tins Poisons Old cabinets Pub Jugs Salt Glaze Pot lids Minerals Pharmacy Inks  
Stoneware Black glass Whisky jugs Kitchenalia Early Doulton Cream pots Guinness Enamel signs

**Major Auction Sunday 6 July**  
alongside the 2 day UK SummerNational



# "Another mega spread?"

conducted live beside the 24<sup>th</sup> 2 day **UK SummerNational**

Approx. 40,000<sup>sq ft</sup> of  
inside & outside stalls  
Wherever you live  
in the world this  
unique week-end  
long event is  
worth travelling to



Elsocar Heritage Centre  
S Yorks, S74 8HJ  
Follow brown 'Elsocar Heritage'  
signs off jct 36 M1



# July 5 & 6 2014

## Opening times & admission costs

**Sat 9<sup>am</sup>-4<sup>pm</sup> Sun 9<sup>am</sup>-2<sup>pm</sup>**

**SAT. w/e pass/ E.E. 9<sup>am</sup> £10**

**SUN. 1 day ticket 9<sup>am</sup> £6**

**MAIN HALL STALLS** from £40 for 2 days, inc. overnight security

**OUTSIDE PITCHES** from £45 for 2 days, on hard standing

**SUNDAY CAR 'REAR'** just £15 (*admits 2 people*)

**COMPETITIONS** **OVER £600 CASH prizes**

**SATURDAY SOCIAL** **FREE** Buffet + Bar & **CASH PRIZE** Quizzes

**SUNDAY AUCTION** top quality eat'd auction Sunday 11am

**CATERING** on site all w/e & around village

BBR, Elsecar Heritage Centre, Nr Barnsley, S. Yorks. S74 8HJ, England

tel: **01226 745156** email: **sales@onlinebbr.com** **www.onlinebbr.com**

# Antique Bottles & Pot Lids Advertising

**BBR**  
AUCTIONS



the Chris  
Mortimer  
collection



the Ian  
MacKenzie  
collection



the Garth  
Morrison  
collection



the Kevin  
Boyle  
collection



John  
Rowe  
collection



the Alan  
Blakeman  
collection



the Norman  
Lewis  
collection



the Dr Dudley  
Davidson  
collection



**Collector provenance stickers** BBR is selling a large collections - all bear a 'provenance' sticker.

Bracketted initials denote whom: CM = Chris Mortimer JR = John Rowe NL = Norman Lewis KB = Kevin Boyle IM = Ian MacKenzie AB = Alan Blakeman DD = Dr Dudley Davidson

Viewing stops generally approx. 10 mins. prior to sale start (11am).  
Sunday sale day bidders must register & obtain a bidding number. All items sold 'as seen' on sale day. Everyone must view & inspect goods beforehand & accept BBR's Terms & Conditions (see rear of cat).  
Payment & collection can take place throughout/ during the sale.



there is an admission charge for the auction held alongside the 24th....

**UK SummerNational w/e July Sat 5 & Sun 6 2014**

**Viewing: Sat 10am 4pm Sun 9am to 10.45am Sale starts 11am**

Post, tel. (book lines early!) & fax bidding facility Low cost after sale post & packing service worldwide

Sale carries a 15% buyers premium added to all hammer prices (+ vat on the 15% premium only)

Refreshments both days - inside & out

Catalogue prepared by Frank Burgin, Clare Bell & Alan Blakeman

BBR, Elsecar Heritage Centre, Nr Barnsley, S Yorks., S74 8HJ

tel: 01226 745156 fax: 01226 361561 email: sales@onlinebbr.com

**Terms & Conditions  
to cat. rear**



## Pratt lids.

### 1. NAPRIMA TRINIDAD (KM 89). Multi-coloured lid in wooden frame, 4.5ins diam produced

by TJ & J Mayer for J.S. Fry & Sons (1853). Very good. £120-150+.



### 2. THE VILLAGE WAKES (KM 321). Multi-coloured pot lid.

Produced by the Pratt factory. Rare version with no title. Very good. £400-500+.



### 3. THE INS (KM 15). Multi-coloured pot

lid, 3ins diam produced by Pratt of J. Ridgeway. Very good. NR £120-150+.



### 4. PIESSE AND LUBIN (KM 404). Multicoloured pot lid, 3.25ins diam probably produced by the Pratt factory 'PIESSE & LUBIN/ NO2 NEW BOND ST LONDON'. Good. NR £40-60+.



### 5. JAMES KING POMATUM SUN-FLOWER (KM 407). Multi-coloured pot

lid & base, 3.25ins diam, 3.25ins tall, 'JAMES KINGS SUN-FLOWER POMATUM' base carries a picture 'AN OLD WORLD GARDEN' produced by the Pratt factory. Some restoration to top edge. Very rare offering. NR £350-400+.



**POSTAL BIDDERS** Given how hectic the SummerNational is bidders must contact BBR soon as possible for more detailed condition reports (email/ tel as per T & C).  
**• ABESENTEE BIDS with us NO LATER THAN WED. 3<sup>rd</sup> JULY**  
**• EMAILED BIDDERS must POST OFFICIAL BID SHEET** (even if arriving late).

## PROVENANCE STICKERS

All items in BBR Auction catalogues featuring an owner name & image beside have a small pict. sticker on.

**NATIONAL STICKERS** - additionally EVERY LOT in this sale carries a small label assigning it '2014 SummerNational Auction'.



**6. CONSTANTINOPL  
THE GOLDEN HORN (KM  
513).** 3.25ins tall,  
**multicoloured jar**  
produced by Ridgeway &  
Co. Good. NR £60-80+.



**7. CONTINENTAL FISH  
MARKET (KM 504).**  
**Multicoloured jar**, 4.5ins  
tall, attributable to the  
Mayer factory. Good. NR  
£80-100+.

**8. PEGWELL  
BAY (KM  
502).** **Multi-  
coloured jar**,  
3.25ins tall,  
produced at the Pratt  
factory. Good. NR £100-  
120+.



**9. VENICE (KM  
517).** **Multi-  
coloured jar**,  
3.5ins tall,  
produced at  
the Pratt  
factory.  
Good. NR  
£80-100+.



**10. MENDING THE  
NETS (KM 503).**  
**Multicoloured jar**, 3.25ins  
tall, produced at the Pratt  
factory. Rim chip. NR  
£80-100+.



**Bears Grease  
pot lids.**

**11. BEAR IN  
RAVINE  
(KM 14).**  
Coloured pot  
lid 2.5ins  
diam,  
'WHITAKER &  
COS GENUINE  
BEARS GREASE/ 69  
HATTON GARDEN  
LONDON' probably produced by the Ridgeway  
factory. Some restoration. NR £400-500+.



**12. PRICE & COS BEARS GREASE POT LID &  
BASE.** 2.75ins diam, 'RUSSIAN/ BEARS GREASE/  
SPONSALIA 246 REGENT STREET/ LONDON/  
FROM THE/ BEARS IN THEIR NATIVE

CLIMATE' standing bear pictured with sash  
'PRICE & COS GENUINE'. Some restoration  
making for an  
affordable rarity!  
£60-80+.







- 13. BEARS GREASE POT LID & BASE.**  
3.25ins diam, 'HIGHLY PERFUMED BEARS GREASE/ FOR BEAUTIFYING & STRENGTHENING THE HAIR' 2 bears pictured, highly ornate outer border. Very rare.

Some restoration. £60-80+ (NL)

- 14. BEARS GREASE POT LID.** 2.25ins diam, 'GENUINE RUSSIAN BEARS GREASE/ FOR INCREASING/ THE GROWTH OF HAIR' 2 bears pictured. Some restoration. £60-80+



**Toothpaste pot lids.**

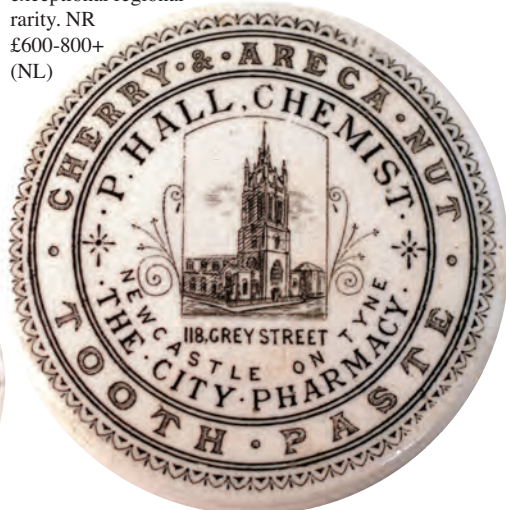
- 15. THE ALEXANDRA TOOTHPASTE POT LID & BASE.** 3.25ins diam, 'THE ALEXANDRA CHERRY T. P.' portrait of Princess Alexandra on pink background to centre. 2 chips

to bottom flange. NR £170-200+

- 16. VICTORIA TOOTHPASTE POT LID & BASE.** 3.25ins diam, 'VICTORIA TOOTHPASTE/ PREPARED ONLY BY/ MR ILIFFE DENTIST MELBOURNE AUSTRALIA' coat of arms to centre on blue background. Some crazing. £120-150+



- 17. NEWCASTLE TOOTHPASTE POT LID.** 3.5ins diam, 'CHERRY & ARECA NUT TOOTHPASTE/ P. HALL CHEMIST/ 118 GREY STREET/ NEWCASTLE ON TYNE THE CITY PHARMACY' church pictured to centre. An exceptional regional rarity. NR £600-800+ (NL)



- 18. NORTHAMPTON TOOTHPASTE POT LID.** 3.25ins diam, 'CHERRY ARECA NUT TOOTHPASTE/ W.B. SAUL/ THE PARADE/ NORTHAMPTON' town hall? pictured to centre. Another regional lid of extreme rarity. Area of flange restored. NR £400-600+.



### SALE DAY FLOOR BIDDERS

All items sold **AS SEEN**. Bidders must ensure lot/s meet personal condition standards.



### MALVERN TOOTHPASTE

**POT LID.** 3.5ins diam, 'AROMATIC QUININE TOOTH POWDER/ T.S. JOHNSON/ PHARMACEUTICAL CHEMIST/ MALVERN' assembly rooms pictured. Good. NR £600-800+.



**20. J. ORD SMITH & CO TOOTH-PASTE SQUARE POT LID.** 2.75 by 2.5ins 'MAY BLOSSOM/ WHITE TOOTH-PASTE/ FOR CLEANSING & PRESER-

VING/ THE TEETH/ J. ORD SMITH & CO/ PHARMACEUTICAL CHEMISTS/ LUDGATE CIRCUS/ LONDON E.C.'. Set of teeth pictured - all such being particularly rare! Some restoration. NR £300-400+ (NL)

**21. BENBOW & SON TOOTHPASTE POT LID & BASE.** 2.75ins diam. crisp black pict. transfer 'BENBOW & SON LONDON ARECA NUT TOOTHPASTE' mosque & palm trees. 'Areca Catechin' below.

*Discovered in a Scottish chemist shop!* Two tiny edge of lid nicks & bottom edge, otherwise good. NR £80-120+.



**Ointment, Pomade, Cold Creams lids.**

**22. MRS ELLEN HALES OINTMENT POT LID & BASE.** 4ins diam,

'CELEBRATED HEAL-ALL OINTMENT MRS ELLEN HALE'S/ MRS E HUMMERSTONES/ 86 BRANDON ST WALWORTH/ LONDON' the lady herself pictured. Very rare large size. Some restoration. NR £40-60+.



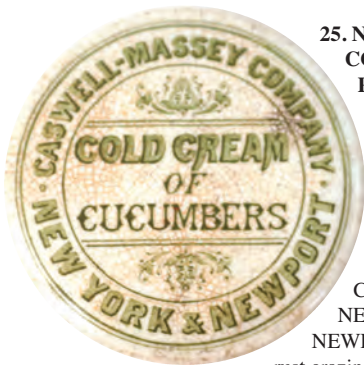
**23. CIRCASSIAN CREAM POT LID.** 3ins diam, 'CIRCASSIAN CREAM/ FOR NOURISHING & BEAUTIFYING THE HAIR'. Portrait of Diana Vernon to centre. Flange chips. Exceptional rare offering. NR £600-800+ (NL)



**24. DELCROIX & COS POMADE POT LID.** Blue transfer 2.75ins diam 'DELCROIX & COS/ D LOCOCKS CASTOR OIL/ POMADE/ 158 NEW BOND ST LONDON'. Small flange flake. £80-120+





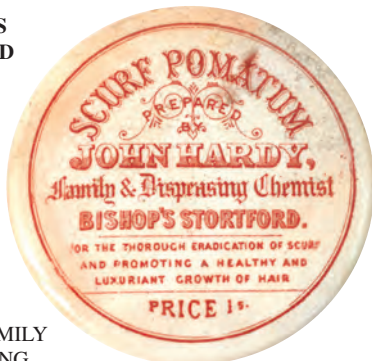


**25. NEWPORT COLD CREAM POT LID.** 2.5ins diam, green transfer 'CASWELL-MASSEY COMPANY/ COLD CREAM/ OF/ CUCUMBERS/ NEW YORK & NEWPORT'. Slight rust crazing. A very rare

green transferred lid. £60-80+

**26. BISHOPS STORTFORD SCURF POMATUM POT LID.**

3ins diam, red/ pink transfer 'SCURF POMATUM/ PREPARED/ BY/ JOHN HARDY/ FAMILY & DISPENSING CHEMIST/ BISHOPS STORTFORD/ PRICE 1s'. Flakes to flange, but very rare. Slight staining. £60-80+



**28. COLD CREAM OF VIOLETS POT LID.** 2.75ins diam, purple transfer 'THE ROYAL/ COLD CREAM OF VIOLETS/ PREPARED BY THE ROYAL PERFUMERY/ 27 OLD BOND ST LONDON'. Stunning deep purple colour. Good. £60-80+



**29. POMADE SYLPHIDES POT LID.** 3ins diam, 'POMADE SYLPHIDES/ PREPARED ONLY AT THE ARMY & NAVY TOILET CLUB/ 24 QUEEN VICTORIA STREET/ VICTORIA STREET/ CORNER OF BUCKLESBURY/ AND 16 & 17 POULTRY E.C.'. Small flange repair. £30-40+



CORNER OF BUCKLESBURY/ AND 16 & 17 POULTRY E.C.'. Small flange repair. £30-40+

**30. SAMARITAN SALVE POT LID & BASE.** 3.25ins diam, 'WHITNEY KENDALL & COS/ SAMARITAN SALVE UNRIVALLED FOR THE CURE OF ULCERS/ AND SKIN DISEASES OF EVERY KIND'. Samaritan & injured man pictured.

Some restoration but so, so, so rare. NR £200-300+ (NL)



27.

**CIRCISSIAN CREAM DOMED POT LID & BASE.** 2.25ins diam, lady pictured 'CIRCISSIAN CREAM'. The smallest of the 'Circassian girl lids, equally as rare. NR £150-200+ (NL)





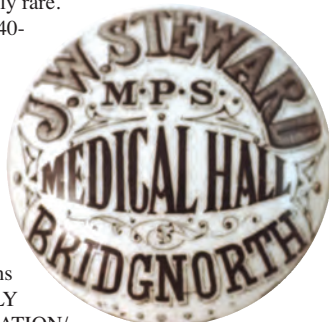
**31. CIRCASSIAN CREAM POT LID.** 3.5ins diam, 'CIRCASSIAN CREAM/ FOR NOURISHING & BEAUTIFYING THE HAIR' Edith Bellenden depicted to centre. Minor flakes to flange but a highly impressive large size rarity. £600-800+



**34. SHAVING CREAM POT LID.** 3.5ins diam, 'OUR SPECIAL/ SHAVING CREAM' shaving brush pictured, directions below. Small top edge chip. NR £20-30+ (NL)



**35. BRIDGNORTH BUTTON LID.** 1.5ins diam, 'J. W. STEWARD/ M.P.S./ MEDICAL HALL/ BRIDGNORTH'. Extremely rare. Good. £40-60+



**36. DUDLEY BUTTON LID.** 2ins diam, 'THE SUPPLY STORES/ ASSOCIATION/ 218 MARKEY PLACE DUDLEY'. Dudley castle pictured to centre. Minor flange flake. £20-30+



**32. ROYAL CIRCASSIAN CREAM POT LID & BASE.** 2.5ins diam 'ROYAL CIRCASSIAN CREAM FOR BEAUTIFYING & PRESERVING/ THE HAIR'. Young Queen Victoria (?) to

centre, highly decorative

floral border around. Some restoration. NR £200-300+ (NL)

**33. CIRCASSIAN CREAM POT LID.** 2.5ins diam, 'CIRCASSIAN/ CREAM/ FOR NOURISHING & BEAUTIFYING THE/ HAIR' with decorative outer floral border. A rare & particularly early lid. Good. £40-60+



Minerals & patents.

**37. AMBER ROATH CODD BOTTLE.** 9ins tall, golden amber glass, embossed 'WATSON & CO/ THE CARDIFF AERATED WATER WORKS/ ROATH' soda syphon pictorial t.m. Exc/ very good. NR £300-400+. (KB)



**38. GREEN SWANSEA COTT BOTTLE.** 8.75ins tall, **deep olive green** glass Dobson patent embossed 'SWANSEA UNITED/ BREWERIES LTD' rearing horse pictorial t.m. to front 'DOBSON & NALL BOTTLE & CASE MAKERS BARNSELEY' to rear. Exc/ very good. NR £250-300+.



**39. SHERBORNE PREMIER PATENT BOTTLE.**

8.75ins tall, aqua glass, 2 circular indents to neck glass marble stopper, embossed 'WILLIAM SEYMOUR/ AERATED WATERS SHERBORNE' to front 'COTT'S PATENT/ PREMIER SOLE MAKERS/ COTT & RYLANDS/ BARNSELEY' to rear. Very good. NR £40-60+.



**40. NEWCASTLE AMBER DUMPY COTT BOTTLE.** 7.75ins tall, **golden amber** glass, front embossed 'W. ROW/ STOWELL/ NEWCASTLE' reclining lion pictorial registered t.m. 'A. ALEXANDER MAKER BLAYDON & LONDON' to rear. Slight dullness marks to rear. NR £600-800+. (KB)



**41. HULL GREEN COTT BOTTLE.** 9ins tall, **bright green** glass Dobson patent codd bottle, embossed vertically to front 'J.W. TINDELL & CO/ HULL' 'REGISTERED TRADE MARK' to rear. An amazing colour & extraordinary pimples (unique to this bottle) around the neck. Fantastic colour, exc/ A1. NR £250-300+.



**42. KIMBERLEY AMBER COTT BOTTLE.** 9ins tall, **golden amber** glass, embossed 'THE "SHILLING" AERATED WATER FACTORY' to front 'KIMBERLEY' to rear. Very good. NR £120-150+.

**43. DEEKS PATENT COTT BOTTLE.** 7.25ins tall, aqua glass embossed 'MATLOCK REGD' front & rear. Very good. NR £60-80+.







**44. GLASGOW EDWARDS PATENT BOTTLE.** 9ins tall, bluey tinged aqua glass cylinder, embossed 'HUNTER & BENNIE/ PARTICK/ GLASGOW' metal fitting to neck, stamped 'JOHN EDWARDS PATENTED' glass marble stopper. Great colour & a really rare bottle. Very good. NR £60-80+.



**45. COBALT BLUE HAMILTON BOTTLE.** 9ins

long, vivid cobalt blue glass embossed 'JOHN ARKLE MORPETH' St George slaying dragon pictorial t.m. Despite rumours this bottle is **NOT** damaged. Extraordinarily rare - one of the most desirable of all the North East blues! Very good. NR £800-1,000+.



### PROVENANCE STICKERS

All items in BBR Auction cats with an owner name & image beside carry a provenance sticker on.



*The following three hamiltons (& 3 slab seals toward end of the sale) are from the late (great) Dennis Northmore Collection - rediscovered after several years, believed missing. Full story in BBR 140.*



**46. ST IVES STONEWARE HAMILTON BOTTLE.** 8.25ins long, speckled tan salt glaze hamilton impressed 'ST IVES SODA WATER/ & LEMONADE MANUFACTURERS' to one side, 'STOCKERS/ SUPERIOR/ EFFERVESCING GINGERADE' to other. Various in manufacture blemishes otherwise very good. NR £600-800+.

**47. STONEWARE HAMILTON BOTTLE.** 6.5ins long, mid brown glazed hamilton impressed 'BATH GATE/ CALCUTTA' to front 'J. BOURNE PATENTEE' (four lines of writing within an oval) p.m. to rear. Very good. NR £400-500+.



**48. STONEWARE HAMILTON BOTTLE.**

7.5ins long, mid brown shiny glaze hamilton. This actually stands up - flat bottomed. Very good. NR £80-120+.





**49. LABELLED JOHN EDWARDS PATENT BOTTLE.**



9.75ins tall, aqua glass hamilton shape with protruding metal ring (impressed 'John Edwards Patented'). Heavy base glass marble

stopper, metal fitting to neck stamped 'JOHN EDWARDS PATENTED' with paper label 'J.W VOYSEY CHAMPAGNE GINGER BEER STONEHOUSE DEVON'. A magnificent offering, not often these come up = and the original label is a true bonus! Very good. NR £500-600+.

**51. BARRETT & ELSERS PATENT BOTTLE.**



8ins tall, **emerald green** glass, rear handle, internal screw stopper, embossed below handle 'TRADE MARK' 'BARRETT & ELSERS LONDON'. Complete with original embossed stopper.



Fabulous colour, quite rare. Exc/ A1. NR £30-40+.

**Ginger beers.**

**52. SILLOTH MINERAL WATER CO GINGER BEER BOOTLE.** 8.25ins tall, ch. t.t.

**blue transfer yacht pictorial** t.m. 'SILLOTH MINERAL WATER COMPANY'.

Buchan p.m. Tiny base chip. NR £500-600+ (KB)



**50. MAUGHAMS PATENT BOTTLE.**

11ins tall, aqua glass round bottomed cylinder. Heavily embossed 'MAUGHAMS PATENT CARRA WATER' within banner encircling bottle 'REGISTERED 31 MAY 1845' embossed below neck. An exceptionally rare early patent. Crude & very good. NR £250-300+.



**53. KIRKCALDY GINGER BEER BOTTLE.** 8.5ins tall, ch.

t.t. s.s. **black transfer** 'JAMES RINTOUL KIRKCALDY' rampant lion 'FORTIS NON FEROX' pictorial t.m. Gray Portobello p.m. Very good. £60-80+ (IM)







**55. WEST HARTLEPOOL GINGER BEER BOTTLE.** 8ins tall, ch. all white, blue transfer 'FRED GUTHRIES STONE GINGER/ WHITBURN STREET/ WEST HARTLEPOOL'. Bird on branch pict. t.m. Buchan p.m. Small base chip - still

very rarely seen for sale - a true North East 'classic'. NR £400-500+ (KB)



**56. GREENOCK APOTHECARIES GINGER BEER BOTTLE.** 8ins tall, st. all white, black transfer 'THE/ GREENOCK APOTHECARIES/... ESTABLISHED 1810/ GINGER BEER'. Statue pictorial t.m. Lip flake. NR £20-30+ (KB)



**57. A.N. DODDS GINGER BEER? BOTTLE.** 8ins tall, ch. t.t. black transfer 'A.N. DODDS/ WINE & SPIRIT MERCHANT/ OLD RED LION STORES CHURCH WAY NS/ NTH & STH SHIELDS & TYNEMOUTH'. Rampant lion t.m. Established 1863. Very good. NR £300-400+. (KB)



**62. LOUTH GINGER BEER BOTTLE.** 8ins tall, ch. t.t. crisp black transfer 'OLD FASHIONED/ HOME BREWED/ GINGER BEER/ EAST BROS/ LOUTH'. Church pictorial t.m. "AERATOR OPTIMUS". J. Stiff & Sons p.m. Very good. NR £60-80+ (NL)

**58. KIRKCALDY GINGER BEER BOTTLE.** 8ins tall, ch. t.t. black transfer 'W. THOMSON/ TIEL WORKS/ KIRKCALDY/ STONE GINGER' castle? pictorial t.m. 'VIGILANDOMUNIO'. Buchan p.m. Very good. NR £40-60+ (IM)





**59. DUNFERMLINE GINGER BEER BOTTLE.** 8ins tall, ch. t.t. **black** transfer 'JOHN BISSETT'S/ STONE GINGER BEER/ GLEN WORKS/ DUNFERMLINE'.

Buchan p.m. Small base flake. NR £30-40+ (IM)



**60. PETERHEAD GINGER BEER BOTTLE.** 8.5ins tall, ch. tan lip s.s. **blue** transfer 'SUPERIOR GINGER BEER/ HESLOP & SON/ PETERHEAD'.

Complete with original swing stopper. Very good. NR £60-80+ (IM)



**61. ABERDEEN GINGER BEER BOTTLE.**

8.5ins tall, ch. t.t. **black** transfer 'JAMES YOUNG & SONS/ CERTIFICATED/ GINGER BEER/... ABERDEEN EST 1862'. Port Dundas p.m. Some restoration. NR £50-60+ (IM)



**63. NEWCASTLE & DISTRICT GINGER BEER BOTTLE.** 8ins tall, ch. t.t. **black** transfer 'FERMENTED GINGER/ BEER/ NEWCASTLE & DISTRICT/ AERATED WATER COMPANY LIMITED'. Sea horses coat of arms pict. t.m. Buchan p.m. Good. NR £100-150+. (KB)

**64. ALLOA OATMALT STOUT BOTTLE.** 8ins tall, st. **brown** top, **black** transfer 'MOST NOURISHING OATMALT STOUT/ MACLAY & CO LTD/ BREWERS/ ALLOA ... GLOBE BOTTLING CO DUNFERMLINE'.

Good. NR £20-30+ (IM)



**65. TEAKETTLE INK.** 2.25ins tall, **pale green** milk glass, tapering shape with raised panels, upturned spout with brass fitting & lift up cap. An extremely rare form in an equally scarce colour. Very good. NR £250-300+.



**66. TEAKETTLE INK.** 2.5ins tall, **deep purple** glass tapering fluted shape with traces of **gold** decoration upturned spout with brass

fitting with original lift up cap. Very good. NR £220-250+.

**67. TEAKETTLE INK.** 2.25ins tall, **cobalt blue** glass, tapering fluted shape with traces of gold decoration, upturned spout with brass fitting (lift up cap missing). Very good. NR £150-200+.





**68. TEAKETTLE INK.**

2.5ins tall, **pale amber** glass, tapering octagonal shape with upturned spout (spout nibbles). Scarce in this colour. NR £120-150+.



**72. BELLOWING MAN INKWELL.**

2ins tall, **mid brown** glaze bewigged gents head gaping mouth with quill hole to forehead. Good. NR £40-60+. (DD)



**69. TEA-KETTLE INK.**

2.25ins tall, **amethyst** glass tapering fluted shape with upturned

spout (spout nibbles). Delightful colour swirls throughout the body. NR £170-220+.



**73. BELLOWING MAN INKWELL.**

2.25ins tall, **dark brown** glaze bewigged gents head with gaping mouth & quill hole to forehead. Good. NR £40-60+. (DD)

**70. ROARING LIONS HEAD INKWELL.**

1.5ins tall, **tan** salt glaze in shape of lions head, 2 quill holes with lions mouth open. Good. NR £80-120+. (DD)



**71. BELLOWING MAN INKWELL.**

2ins tall, shiny **brown** glaze bewigged gents head with gaping mouth, impressed 'SYNTAX' to rear base - very rare. Tiny glaze flake otherwise good. NR £60-80+. (DD)



**74. BLUE**

**COTTAGE INK.** 2.75ins tall, **mid blue** glass cottage shape ink **with numerous amber swirls** too! Water butt to side, tiled roof with stepped chimney, windows & door to front, pen recess to rear. Hard to detect corner hairline. Fantastic colour & an exceptionally rare offering. NR £300-400+. (NL)



**75. GREEN COTTAGE INK.**

2.75ins tall, **light green** glass cottage shape ink.

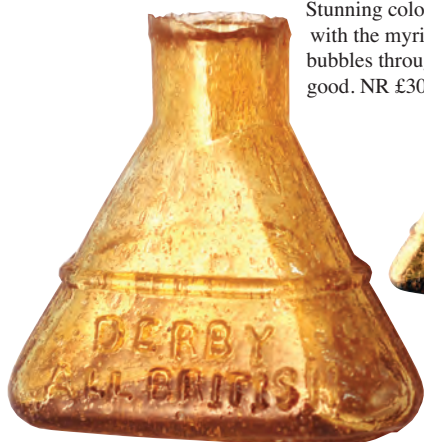
Bay window to side, tiled roof, stepped chimney, windows & door to front, pen recess to rear. Lovely

'fin' of glass to R

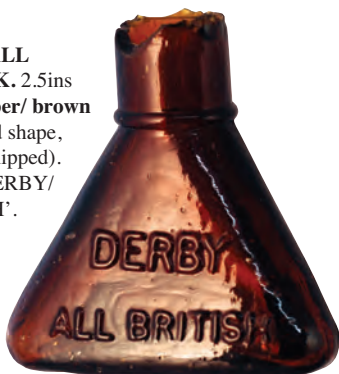
of lip section. Rare in this hue. Very good. NR £170-220+.

**76. DERBY ALL BRITISH INK.** 2.5ins tall, **golden amber** glass **full of seed bubbles**, pyramid shape, sheared lip embossed 'DERBY/ ALL BRITISH'.

Stunning colour enhanced with the myriad of seed bubbles throughout! Very good. NR £300-400+.



**77. DERBY ALL BRITISH INK.** 2.5ins tall, **deep amber/ brown glass**. Pyramid shape, sheared lip (chipped). Embossed 'DERBY/ ALL BRITISH'. Another deep, ultra rare, colour sensation. NR £120-150+.



**78. PAIR OF DERBY ALL BRITISH INK.**

2.5ins tall, one **cobalt blue** glass, pyramid shape, sheared lip.

Embossed 'DERBY/ ALL BRITISH'.

Other aqua glass. Good. (2) NR £30-40+.



**79. DIAMOND REGISTRATION INK.**

2ins tall, aqua glass circular shape, sheared lip with embossed diamond registration mark. Exceptionally rare. Very good. NR £40-60+.



**80. AMBER SQUARE RIBBED INK.** 2.5ins tall, **deep amber/ brown** glass, square ribbed 3 sides, sheared lip. Faint neck sliver. Great example in this rare colour. NR £30-40+.



**81. TURQUOISE INK.** 2.25ins tall, **turquoise** glass with swirl to shoulder/ neck octagonal ink offset neck with sheared lip. Very rare. Very good. NR £30-40+.



**National stickers**

All SummerNational lots carry a small '2014 SummerNational' provenance sticker.



**82. BOAT SHAPE SWIRLY INK.** 2.25ins tall, **dark green** glass (slag glass) with **red/ brown** swirls all over. Sheared lip diamond registration mark to base 1878. Flaw to shoulder - but another real sheared lip sensation! NR £60-80+.



**83. BLACKWOOD & CO INK.** 2.25ins tall, **mid blue** glass circular ink, offset neck, sheared lip. Embossed 'BLACKWOOD & CO PATENT/ LONDON'. Simply a delightful colour. Very good. NR £40-60+.

**84. TODD'S PERTH INK BOTTLE.** 8.5ins tall, **dark olive green** glass rectangular shape long neck with applied collar lip. Embossed 'TODD'S/ PERTH/ INK'. Super crude, super example - not often these turn up. Very good. NR £40-60+.



#### Miniatures.

**85. ALBAROSE MINIATURE POT LID.** 1.25ins diam. Crisply transferred 'ALBAROSE/ TOOTHPASTE/ ... BREIDENBACH & CO LONDON' within outer line border. 'DELICATELY PURE...PERFUMED WITH THE COLOUR OF WHITE ROSES? Large central detail of young girl with cape/ hood over head. Complete with majority of original (?) contents. Base transferred 'Rd No 15503'. An exceptionally rare pot lid. Exc/ A1. NR £400-600+. (NL)



**86. MINIATURE FULHAM GINGER BEER BOTTLE.** 3.75ins tall, st. all **tan** salt glaze **black** transfer 'THE FULHAM POTTERY & CHEAVIN FILTER COMPY/ FULHAM LONDON S.W.' with 'TRADE MARKS/ OR MONOGRAMS/ PRINTED ALL COLOURS' below. An exceedingly rare offering. Very good. NR £300-400+. (AB)

**87. MINIATURE STIFF GINGER BEER BOTTLE.** 2.25ins tall, st. all **tan** salt glaze, **black** transfer 'STIFF & SONS LAMBETH LONDON'. Only a handful recorded. Very good. NR £200-300+. (AB)



**88. MINIATURE WHISKY JUG.** 2ins tall, **brown** neck lower **tan** salt glaze, **black** transfer Galley of Lorne pictured. Doulton Lambeth impressed mark. Very good. NR £250-300+. (AB)





**89. MINIATURE SILVER METAL CODD BOTTLE.**

1.75ins tall, 'CODD PATENT' in raised lettering. This is an OLD promotional piece with good provenance. Only the 2nd known. £100-200+.



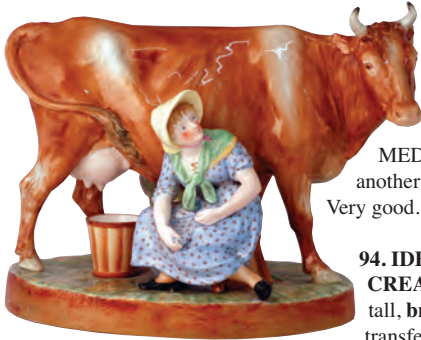
*Herewith an initial creams offering from an extensive 300+ long time collection - more to follow!*

**92. FINDLATERS CREAM POT.**

5ins tall, **brown** top, lower **off white** glaze, **black** transfer 'FINDLATERS/ FRESH/ CREAM'. An exceptionally rare large size. Very good. NR £60-80+.

**93. CHORLTON-MEDLOCK CREAM POT.**

5ins tall, all **white** glaze, **blue** transfer 'R. POTTS MOORLAND/ DAIRY/ BRUNSWICK ST/ CHORLTON-ON-MEDLOCK'. Not seen another in this large size. Very good. NR £50-60+.



**Dairyana.**

**90. MILKMAID & COW SHOP DISPLAY FIGURINE.**

11.5ins tall, 13ins long at oval base. Large Jersey cow with seated milkmaid & bucket on oval base. Stamped to base in green 'DAIRY SUPPLY LIMITED MUSEUM ST LONDON'. Some restoration to one of the ears but a truly stunning dairyana go with. NR £600-800+



**94. IDEAL DAIRY CO CREAM POT.**

5.25ins tall, **brown** top, **brown** transfer 'THICK RICH CREAM/... IDEAL DAIRY CO/ 222 KENSAL RD LONDON W.'. A very crisp print - especially the pictorial. Port Dundas base p.m. Very rare large size. Very good. NR £60-80+.



**95. AYLESBURY DAIRY CO**

**MUG.** 4ins tall, **white** glaze, **blue** transfer 'AYLESBURY DAIRY COMPANY LIMITED/ CHIEF OFFICE/ ST PETERSBURGH/ PLACE BAYSWATER'. To rear large, detailed coat of arms & 'By royal Warrant'. Never seen another? Some crazing & body staining. NR £50-60+.



**91. CREAM PAIL.**

9.5ins tall, 9.5ins diam at top, **white** glaze twin handled pail 'CREAM' in large black lettering. 'DAIRY OUTFITS CO OFFICE KINGS CROSS LONDON' stamped to base. Very good. NR £150-200+







**96. NEWMARKET-ON-FERGUS CREAM POT.** 3.75ins tall, all white glaze, black transfer 'PURE SWEET CREAM/ ATHLAHINE HOME FARM/ NEWMARKET-ON-FERGUS'. Shamrocks pictured. Rare extra large size. Good. NR £40-60+.

**97. EAST FINCHLEY CREAM POT.** 3.75ins tall, green top black transfer 'P.M. ADAMS/ MUSWELL AVENUE DAIRY/ 5 PRINCES PARADE/ CHURCH END HIGH RD, EAST FINCHLEY/ WOODSIDE AVENUE DAIRY'. Very rare. Very good. NR £60-80+.

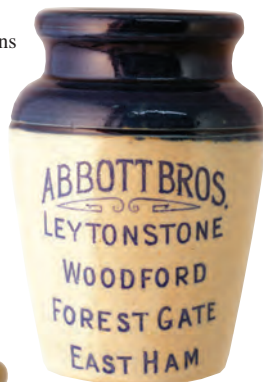


**99. BOURNEMOUTH CREAM POT.** 3.75ins tall, red/ brown top, black transfer 'ISAAC & CO LTD/ MALMESBURY DAIRIES/ BOSCOMBE/ BOURNEMOUTH' full cow pictorial. Rare. Good. NR £40-60+.



**98. WATERFORD CREAM POT.** 3.5ins tall, tan glaze, rear handle, black transfer 'ROBERT A. MERRY & CO/ LIMITED/ SELECT/ FAMILY GROCER/ WATERFORD'. Very good. NR £60-80+.

**100. EAST HAM CREAM POT.** 3.75ins tall, crisply struck blue top, blue transfer 'ABBOTT BROS/ LEYTONSTONE/ WOODFORD/ FOREST GATE/ EAST HAM'. Very good. NR £60-80+.



**101. COLNE CREAM POT.** 3.75ins tall, off white glaze, black transfer 'COLNE & DISTRICT FARMERS ASSOCIATION LTD/ THICK CREAM/ THE CREAMERY/ COLNE/ FOUNDED 1906' full cow pictorial. rare. Rarely seen. Very good. NR £20-30+.



#### Kitchenalia.

**102. COFFEE JAR.** 10.5ins tall, cylinder shape with wide neck, dark olive green glass embossed 'DAKIN & COMPY/ TEA & COFFEE/ MERCHANTS/ NUMBER ONE/ SAINT PAULS/ CHURCH YARD/ LONDON' to front 'TWO POUNDS/ OF/ DAKINS/ ROYAL/ PATENT COFFEE'. Handled vewry few of this large size over the years - really impressive piece of early glass. Very good. NR £180-220+.



**103. COFFEE JAR.** 9ins tall, cylinder shape with wide neck, **dark olive green** glass embossed 'DAKIN & COMPY/ TEA & COFFEE/ MERCHANTS/ NUMBER ONE/ SAINT PAULS/ CHURCH YARD/ LONDON' to



front 'ONE POUND/ OF/ DAKINS/ ROYAL/ PATENT COFFEE'. Very good. NR £160-180+.

**104. CAUSTIC SODA JAR.**

7ins tall, **ice blue** glass cylinder with wide neck embossed 'J. CROSFIELD & SONS/ CAUSTIC SODA/ STICKS/ PYRAMID BRAND/ WARRINGTON' pyramid pict. t.m. Wonderfully embossed & an attractive colour. Very rare. Exc/ A1. NR £60-80+.



**105. COOPERS PRESERVE JAR.**

8.75ins tall. Delightful pale **tan** salt glaze cylinder with wide neck & rolled lip. Impressed 'COOPERS/ PATENT PRESERVERS' with coat of arms to front 'STEPHEN GREENS GLASS LINED INSIDE LAMBETH'. P.m. below. Good. NR £80-120+.



**106. GLASGOW AMMONIA BOTTLE.** 11ins tall, **off white** glaze, **black** print 'EVER GREEN/ AMMONIA POISON/ NOT TO BE TAKEN/ PAROZONE CO LTD GLASGOW'. Govancroft p.m. Crudely made, overall good. NR £60-80+. (NL)



**107. GILBERTS AMMONIA WHITE CERAMIC MEASURE.**

1.5ins tall, transferred 'INVALUABLE FOR/ DOMESTIC USE AND A/ PERFECT LUXURY FOR THE/ BATH TOILET & NURSERY' to rear 'GILBERTS HOUSEHOLD AMMONIA 6d



& 1/- FAMILY BOTTLES PRICE 1/6 EACH. Restoration to lettering area one side. NR £20-30+.

**108. YORK MINIATURE FOOTWARMER.** 4.75ins tall, **brown & off white** glaze, **black** transfer 'MELLOR & CO CHINA ROOMS/ YORK'. Denby Bourne Pottery p.m. to base. Very good. NR £50-60+.



**POSTAL BIDDERS**

Postal bidders must satisfy themselves lot/ s meet their condition standards. For a more detailed inspection/ personal assessment please tel. BBR, give lot numbers, & call back later to speak with AB.





**109. B.E.D. FOOT-WARMER.** 4.5ins tall, 9ins long, **brown** glazed Gladstone bag shape 'B.E.D.' in **black** letters. Bourne

Denby p.m. Scarce complete example. Very good. NR £30-40+.

**110. CORNISHWARE STORAGE JAR.**

3.5ins tall to top of flat lid, **blue** & **white** bands 'JAMAICA PEEL'

in **black** lettering. Black shield T.G. Green p.m. An unrecorded little beaut! Very good. NR £150-200+.



**111. ADVERTISING TOILET SOAP GLASS**

**BOWL & COVER.** 8.75ins tall to top of domed cover, acid etched 'HODGSON & SIMPSON LIMITED' across cover front, "SWEET MAY"/TOILET SOAP' to bowl front. Rare. Very good. NR £40-60+.



**112. NG & SF YEAST ENAMEL TRAY.** 14 by 11ins, **white** enamelled tray with **blue** lettering 'NG & SF YEAST' diagonally across middle, sack of yeast pictured to top corner 'NG & SF TRADE MARK DELFT PURE YEAST' outer edge chips. Great kitchenalia piece. NR £40-60+.



**113. NIGHT LIGHT.** 3.5ins tall, harlequin shape night light in **ruby** glass. Very good. NR £40-60+.



**114. NIGHT LIGHT.** 3.5ins tall, harlequin shape night light in **cobalt blue** glass. Very good. NR £30-40+.



**115. NIGHT LIGHT.** 3.5ins tall, harlequin shape night light in **mid blue** glass. Very good. NR £20-30+.



**116. NIGHT LIGHT.** 3.5ins tall, harlequin shape night light in **emerald green** glass. Very good. NR £20-30+.



**117. NIGHT LIGHT.** 3.5ins tall, harlequin shape night light in **deep amber** glass. Very good. NR £20-30+.



**CONDITION - help us to help you!**

If you spot condition differences which we have not please advise BBR staff. We will announce such amendments prior to the sale.

**SALE DAY FLOOR BIDDERS**

All items sold **AS SEEN**. Bidders must ensure lot/s meet personal condition standards.

**118. TARGET BALL.** 3ins tall, **cobalt blue** glass target ball, criss cross pattern embossed 'W W GREENER ST MARYS WORKS BIRMM & 68 HAYMARKET LONDON' around central band. Very good. NR £60-80+.



**119. DOULTON WATER FILTER.** 12.5ins tall to top of lid in **blue, brown, green** salt glaze floral design & raised cherubs putti all around 'DOULTON LAMBETH MANGANOUS CARBON FILTER DR BERNAYS PATENT' in raised lettering below top. Complete with inner filter. Doulton Lambeth impressed mark to base. Very good. NR £200-250+. (AB)

**120. DOULTON WATER FILTER PEDESTAL** 19ins tall to top of lid in **brown & blue** salt glaze lions heads handles to sides with lots of raised decoration winged cherubs masks etc. Complete with original tap. Very good. NR £150-200+.



**121. WATER FILTER.** 17ins tall to top of domed lid, **grey/ green** glaze 'ELLIOTT & CO/ SELF CLEANSING/ CARBON FILTER/ MANCHESTER' in raised lettering, handles to sides & raised grapes, vines & plumes to each side. Metal tap to bung hole. Very good. NR £80-120+.



Coasters.

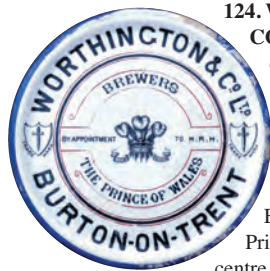


**122. S. ALLSOPP & SONS WHITE METAL FRAMED COASTER.** 6.25ins diam, multi-coloured transfer showing brewery buildings, 3 beer label facsimiles above, 'S. ALLSOPP & SONS LIMITED/ THE BREWERY BURTON-ON-TRENT'. Good. NR £150-200+

**123. IND COOPE & CO COASTER.** 5.5ins diam, 'IND, COOPE & CO LIMTD/ BREWERS/ BURTON ON TRENT' with coloured trade mark of Britannia to centre. Traces of gold border. Good. NR £80-120+



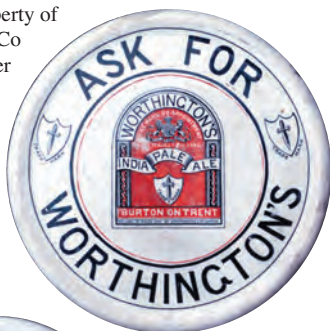




**124. WORTHINGTON & CO COASTER.** 5.5ins diam, 'WORTHINGTON & CO LTD/ BREWERS/ BY APPOINTMENT TO H.R.H./ THE PRINCE OF WALES/ BURTON-ON-TRENT' Prince of Wales plumes to centre. W.T. Copeland &

Sons p.m. Chip & hairline. NR £40-60+

**125. WORTHINGTONS COASTER.** 5.75ins diam, 'ASK FOR/ WORTHINGTONS' with beer label facsimile in **red & black** to centre. The property of Worthington & Co Ltd printed under base. Good. NR £60-80+



**126. J. MARSTON THOMPSON & SON LTD COASTER.** 5.75ins diam, 'J. MARSTON THOMPSON & SON LTD BREWERS/ BURTON-ON-TRENT' **red**

& **black** transfer with 3 barrels pictured 'MILD' 'STRONG' & 'PALE'. Some repairs under bottom edge otherwise good. NR £30-40+

**127. ALLSOPPS WHITE METAL FRAMED COASTER.** 6.25ins diam, 'ALLSOPPS PALE ALE' around portrait heads for 'EUROPE' 'ASIA' 'AFRICA' & 'AMERICA' also with cherub figures pictured in **pink & black** transfer. Good. NR £40-60+



**128. JACOB'S COASTER.** 5.75ins diam, 'JACOB'S PILSENER LAGER BEER', beer label facsimile. 'FREDK. JACOB & CO 77, 79, 81 THEOBALD RD LONDON W.C.' to centre. Medals awarded info' both sides. W. T. Copeland & Sons p.m.

Nice vibrant coloured scarcity. Repair under bottom edge. NR £40-60+



**Whisky jugs.**

**129. BURNS FAREWELL TO HIGHLAND MARY WHISKY JUG.** (WG pg 211) 7.75ins tall, **tan** top, lower **off white** glaze, **black** transfer 'BURNS FAREWELL TO HIGHLAND MARY/ PROPRIETORS CHARLES WILKINSON & CO GLASGOW' couple pictured sat on bench woodland in background. H. Kennedy Glasgow p.m. The rarest of all the Wilkinson variants this shape. Minute insignificant side lip & base flake! The rarest example of this form series. Very good. NR £600-800+. (AB)



**130. AULD LANG SYNE WHISKY JUG.**

(WG pg 68) 11ins tall, **green** top, rear handle. Front depicts group of highland dancers plus piper & highland backdrop - below 'FINEST VERY OLD/ SCOTCH (MALT) WHISKY' & to rear 'AULD LANG SYNE'. One of possibly only 2 seen by myself over 40 years? Exc/ A1. NR £800-1,000+. (AB)



**132. JAMES BUCHANAN WHISKY JUG.** (WG pg 34) 8ins tall, **tan** neck handle to rear. **Brown/sepia** highly detailed transfer - Big Ben & Houses of Paliament 'JAMES BUCHANAN & CO/ SPECIAL SCOTCH WHISKY/ BY APPOINTMENT SUPPLIERS OF SCOTCH WHISKY/ TO THE/ HOUSE OF COMMONS'. Fabulous. Still the ultimate whisky jug 'classic'. Very good. £500-600+.



**131. AULD LANG SYNE WHISKY JUG.**

(WG pg 68) 8.5ins tall, **green** top. As previous example but the smaller size one of probably 3 recorded? Port Dundas p.m. to base. Exc/ A1. NR £800 - 1,000+. (AB)



**AFTER SALE PRICES**

BBR pops sale results onto its website:

**sales@onlinebbr.com**

alternatively find them on

Facebook: **BBR Auctions**

or email BBR for a pdf:

**sales@onlinebbr.com**

**EMAILS BIDS**

Email bids to:

**sales@onlinebbr.com**

with full name, address

& credit card details,

or fax: 01226361561.

**YOU MUST ALSO**

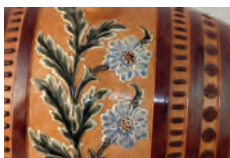
**POST BID SHEET -**

**EVEN IF ARRIVING**

**AFTER THE SALE**



**133. DOULTON WHISKY BARREL.** 12ins tall, 12ins long. **Brown & tan** salt glaze with floral design in **blue & green** 'SCOTCH WHISKY' in raised lettering. Bung hole below to one end. Doulton Lambeth impressed base mark. The pictures don't really do this justice - great piece! Very good. NR £500-600+.



**134. DEWARS DOUBLE COUPLED FLASK. (WG pg 57)** 6.25ins tall, **dark green** top lower **tan** salt glaze 'JOHN DEWAR & SONS LTD PERTH WHISKY' one side 'ESTABLISHED 1846' to the other. Doulton Lambeth impressed base mark. Rarely offered. Very good. NR £150-200+.



**135. DEWARS THE WHISKY OF HIS FOREFATHERS WHISKY JUG. (WG pg 55)** 11ins tall, **dark green** top, lower **tan** salt glaze 'DEWARS PERTH WHISKY/ THE WHISKY OF HIS FOREFATHERS/ BY ROYAL WARRANT/ TO HER MAJESTY THE QUEEN'. Doulton Lambeth impressed mark to base. The scarce large size example. Very good. NR £150-200+.



**136. THE CRAY THUR WHISKY JUG. (WG pg 182)** 7.5ins tall, **all white** glaze, clear **green** transfer 'THE "CRAY THUR"/ ERIN - GO-BRAGH/ DEW THOM & CAMERON/ LIMITED'. Rare transfer colour. Tiny in manufacture pin prick blow mark otherwise very good. NR £40-60+



**137. HENRY URQUHART ARTWARE FLASK. (WG pg 193)** 8.5ins tall, superb artware flask 'GLEN URQUHART' in raised lettering to shoulder, grapes & vines design **pale green, brown & blue** colouring. Doulton Lambeth impressed base mark, with stopper. Tiny lip flake. NR £150-200+.



**138. BILL SYKES KINGSWARE JUG. (JL 40)** 'GREEN VERSION' 8ins tall, modelled head, rear transfer of his faithful dog "BULLSEYE". Royal Doulton p.m. Professional lip rest., still very rare offering. NR £80-120+.



## Pub jugs.

### 139. DUNIVA PUB JUG.

8.5ins tall, **tan** salt glaze shapely jug, handle to rear, transferred 'VERY OLD/ DUNIVA/ HIGHLAND WHISKY/ PROPRIETORS/ THE MILE END DISTILLERY COY' thistle pictured. Doulton Lambeth & artists initials impressed to base. Very rarely offered. Very good. NR £400-500+. (AB)



### 140. SANDY MACDONALD SCOTCH WHISKY PUB JUG.

7.5ins tall, **mustard** glaze, **black** transfer 'THE REAL SANDY MACDONALD/... ALEXANDER & MACDONALD/ LEITH SCOTLAND' one side picture of 'STRONACHIE/ DISTILLERY PERTSHIRE SCOTLAND' to other. Royal Doulton p.m. to base. Extremely rare. Very good. NR £350-400+.



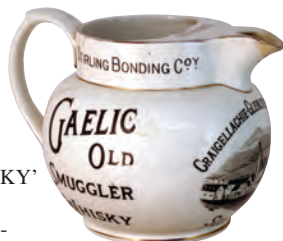
### 141. R & H JENNER & SONS PUB JUG.

7ins tall, **white** glaze, ornate **sepia** transfer all round: portraits of King George & Queen Mary to front, 'R & H JENNER & SONS SOUTHWARK BRIDGE RD/ SOUTH LONDON BREWERY' '1902' within belt etc. All surrounded by foliage etc. Doulton Burslem p.m. Good. NR £150-200+.



### 142. GAELIC OLD SMUGGLER WHISKY PUB JUG.

5ins tall, **white** glaze, **black** transfer 'GAELIC/ OLD/ SMUGGLER/ WHISKY' both sides 'CRAIGELLACHIE - GLENLIVET DISTILLERY/...' distillery to front. 'STIRLING BONDING COY' below rim. Early James green & Nephew Ltd p.m. Extremely rare. Lip repair to 'ice catcher' pouring lip. NR £200-300+. (NL)



143. ROGERS BRISTOL PUB JUG. 5ins tall, **white** glaze, **black & red** transfer 'ROGERS/ PRIZE MEDAL PALE ALES/ BRISTOL' one side, 'BREWERS EXHIBITION LONDON 1927/ W. J. ROGERS LTD/ SECURED THE/ FIFTY CHALLENGE/ GUINEA CUP/ FOR THE BEST BOTTLED BEER OF ANY KIND' to rear - detailed **red** cup. Tiny pouring lip nibbles. NR £120-150+.



144. ATKINSONS PUB JUG. 4.25ins tall, **blue & white** floral design, **black** transfer 'ATKINSONS/ 1855/ ASTON ALES', 3 'A's & date in centre. Base marked 'Rd 625614' (1913). chip to one side of lip. Fabulous looker & very rare. NR £60-80+. (NL)



**145. MUIRISH SCOTCH WHISKY PUB JUG.**

5.75ins tall, **beige** glaze stoneware jug. Duck shape handle 'MUIRISH/ SCOTCH/ WHISKY/ THE BREWERY ELY' & 'ASK FOR/ PRIZE/ ALES' in **black** lettering. Stamped England to base. Never seen another? Very good. NR £80-120+.



**146. MCNISH'S PUB JUG.**

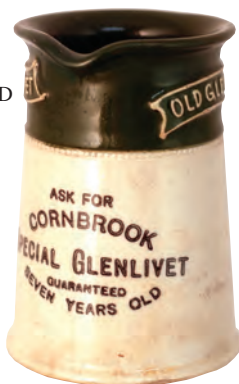
4.5ins tall, very **rare** **purple/mauve** glaze, **black** transfer 'MCNISH'S/ SPECIAL SCOTCH/ WHISKY' both sides 'ROBERT MCNISH & CO/ LIMITED/ GLASGOW & LONDON' to front (pict. t.m. above). 'QUALITY FIRST' twice below rim. James Green & Nephew Ltd p.m. to base. Very good. NR £80-120+.



Tins.

**147. GLENLIVET PUB JUG.**

4.5ins tall, stoneware jug, **green** top lower **off white** glaze 'OLD GLENLIVET' in raised lettering below rim, 'ASK FOR/ CARNBROOK/ SPECIAL GLENLIVET GUARANTEED/ SEVEN YEARS OLD'. Lovatt Langley Mill p.m. Minor stain marks. Very good. NR £60-80+. (NL)



**148. LEAMINGTON PUB JUG.** 4.5ins tall, stoneware jug **blue** top lower **off white** glaze, **black** transfer 'ASK FOR/ LUCAS & COS/ LEAMINGTON/ ALES & STOUT'. Price bristol p.m.

Some restoration - still extremely rare. NR £50-60+. (NL)



**follow BBR Auctions on Facebook**

Auction results, News & Updates regularly added to FB - befriend us!

**149. CRAWFORDS RACING CAR TIN.** 17.5ins long c. 1930 "METEOR" streamlined racing car in **silver & red**, complete with driver. 'WILLIAM CRAWFORD & SONS LTD/ BISCUIT MANUFACTURERS/ EDINBURGH LIVERPOOL & LONDON/ GREAT BRITAIN' stamped to base. Complete with original box.

Very good. £800-1,200+.





#### 150. HUNTLEY & PALMERS BISCUIT TIN LORRY.

5.5ins tall, 9.75ins long in **brown, white** sliding roof 'HUNTLEY & PALMERS LTD/ READING BISCUITS' with by appointment coat of arms in **gold** lettering to sides & rear. Loose wheel otherwise good. £600-800+.

#### 152. RAILWAY CARRIAGE TINPLATE DINING CAR RESTAURANT.

4.5ins tall, 14ins long, c.1910 **brown & green** with passengers in colour. 'GALLETAS OLIBET RENTARIA' below lift off roof. Slight wear. £400-600+.



#### 151. PEARCE DUFF'S TIN PLATE LORRY.

6.25ins tall, 12ins long, in **blue** with **cream** lift off roof 'PEARCE, DUFF'S/ CREAMY CUSTARD/ AWARDED GOLD MEDALS/ FOR PURITY AND EXCELLENCE' in **gold** lettering both sides & rear. Very good. £400-600+.



#### 153. CRAWFORDS FLYING SCOTSMAN TINPLATE BISCUIT TIN.

3.5ins tall, 16ins long, c. 1928 mainly **green & black** colouring the biscuits were stored in the main boiler which opened at the front. Slight wear & front wheels missing. £400-500+.





**154. JACOB & CO LTD ROYAL MAIL VAN  
TINPLATE VAN.** 5.5ins tall, 8ins long, c.1924 **red & black** with **silver** lettering 'G.R. ROYAL MAIL' to both sides. Lift off roof with 'W. & R. JACOB & CO LTD/ BISCUIT & CAKE MANUFACTURERS' printed underneath. Some surface wear. £200-300+.



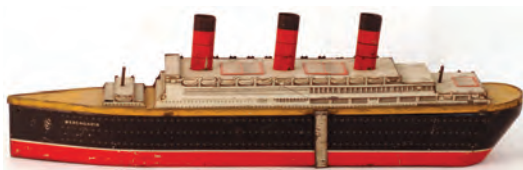
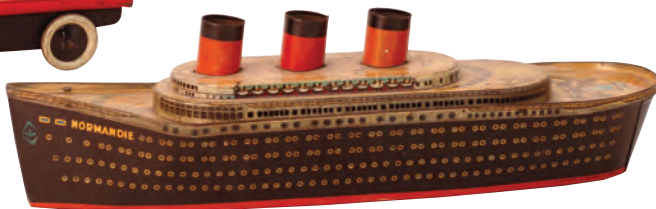
**155. CRAWFORDS TINPLATE  
TRACTOR.** 4ins tall, 7ins long. **Silver & black** with **red** wheels 'WILLIAM CRAWFORD & SONS LTD/ BISCUIT MANUFACTURERS EDINBURGH LIVERPOOL & LONDON/ GREAT BRITAIN' printed to rear. With original box. Some surface wear etc. £200-300+.



**156. JACOBS  
TINPLATE  
GYPSY  
CARAVAN.** 5.5ins tall, 6.25ins long, c.1937 **yellow, green & red** colouring 'W 7 R JACOB & CO LTD...' printed in **red** underneath. Original box. Mint condition. Very good. £250-300+.

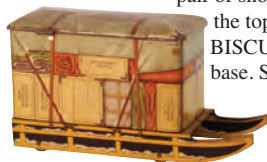


**157. NORMANDIE  
TINPLATE  
OCEAN LINER.** 5.25ins tall, 18ins long. **Red, black & cream** colouring 'NORMANDIE' & portholes in **gold**. Good. £200-300+.



**158. CRAWFORDS 'BERENGARIA'  
TINPLATE OCEAN LINER.** c.1928 **red, black & cream** colouring. Modelled on the actual vessel built in Hamburg Germany in 1912. General surface wear. £200-300+.

**159. JACOB'S TINPLATE 'SLEIGH'.** 4.25ins tall, 7.25ins long. Issued from 1930-1932 printed with crates of Jacob's biscuits & pair of snow shoes strapped to the top. 'JACOB'S BISCUITS' strapped to base. Some surface wear. £200-300+.





**160. JACOB'S TINPLATE RAILWAY CARRIAGE.** 4.5ins tall, 7.5ins long. **Brown & green** with passengers in colour pictured 'FIRST CLASS DINING SALOON' 'W & R JACOB & CO LTD/ BISCUIT MANUFACTURERS/ DUBLIN' printed under lift off roof. Some surface wear, rust etc. £80-120+.



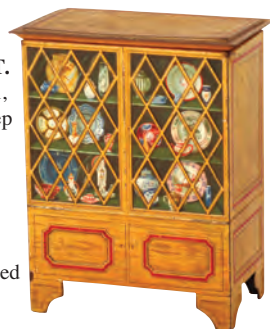
**161. READING HUNTLEY & PALMERS TINPLATE RIVER THAMES TUGBOAT.** Issued in 1927, 4ins tall, 16.75ins long. **Pink & cream** colouring centrally hinged lid opens from the bows. Some surface marks etc. £80-120+.



**162. TINPLATE CLOCKWORK LOCOMOTIVE & TENDER.** 3.5ins tall, 10.25ins long, combined **green & black** colouring. 'MR' printed to tender (Midland Railway?). Some wear etc. £60-80+.



**163. HUNTLEY & PALMERS TINPLATE CABINET.** (1911-1912) 7.25ins tall, 5.5ins wide, 3.25ins deep lattice - windowed cabinet contains a fine porcelain collection. 'Huntley & Palmers Biscuits Reading & London England' stamped under lift off lid. Good. £60-80+.



**164. WILLIAM CRAWFORDS TIN PLATE 'MENAGERIE VAN'.** 4.5ins tall, 5.75ins long. Lions one side tigers to the other, monkeys to one end leopard to the other end in colour. William Crawford & Sons Ltd Biscuit Manufacturers Edinburgh Liverpool & London' printed to base & under lid. Loose wheel & surface wear. £80-120+



**165. ROWNTREE MINIATURE NOVELTY LUGGAGE TRUNK TIN.** 2.25ins long, 1ins deep 'ROWNTREE'. NR £20-30+.



### SALE DAY FLOOR BIDDERS

All lots sold **AS SEEN**. Bidders must ensure lot/s meet personal condition standards.

### NATIONAL STICKERS

**EVERY LOT** in this sale carries a small label assigning it '2014 SummerNational Auction'.



**166. ROWNTREE  
MINIATURE RUGBY  
BALL NOVELTY  
TIN.** 2ins long,  
'ROWNTREE YORK'.  
NR £20-30+.

**167. ROWNTREE  
MINIATURE COAL  
SCUTTLE NOVELTY  
TIN.** 1.5 by 1.75ins deep  
'ROWNTREE'. £20-  
30+.



**168. ROWNTREE  
MINIATURE VIOLIN  
CASE NOVELTY  
TIN.** 3.25ins long  
'ROWNTREE'.  
NR £20-30+.



**169. ROWNTREE  
MINIATURE PURSE  
NOVELTY TIN.** 1.75 by  
1.75ins 'ROWNTREE'  
across front. NR £20-30+.



**170. ROWNTREE  
CHOCOLATE PICKERS.  
Gold coloured metal marked  
'ROWNTREE'.  
2.75ins long.  
NR  
£20-30+.**



**171.  
THREE  
MINIATURE  
NOVELTY TINS.**  
Punch & Toby  
kiosk tin 3.25ins  
long, **plus** fish tin  
(salmon?) 4ins  
long, **plus** Sunlight

soap pocket paint box tin. 2.5ins long. (3) NR £30-  
50+.

### EITHER OR BIDS

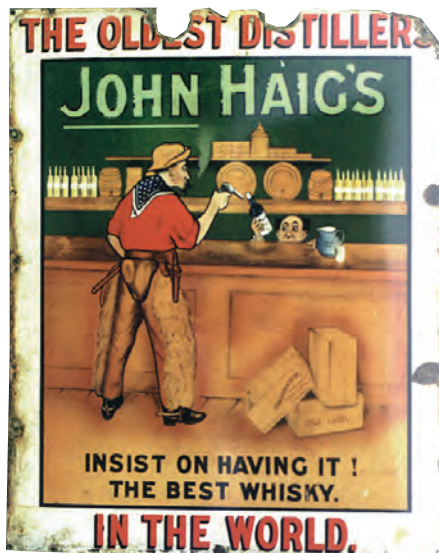
For absentee bidders on a tight budget BBR operates an 'either' 'or' option. Bid '£X' on one lot, '£Y' on another if unsuccessful. We can even carry amounts over - **BUT** - make instructions simple & clear! If in doubt email AB.

### Advertising.

**172. CLAYMORE BAR  
BACK FIGURE.** 10ins tall,  
newsboy figure wearing  
**brown** coat & **blue**  
trousers holding banner  
'EXTRA SPECIAL/  
GREEN LEES/  
CLAYMORE/ THE/  
FAVOURITE SCOTCH/  
EVERYWHERE' **black** lettering  
on **white** 'ASK FOR  
CLAYMORE' to plinth. Hand  
reglued - an affordable (rare)  
ceramic classic statuette -  
suitable case for restoration? NR  
£600-  
800+.



**173. JOHN HAIGS PICTORIAL ENAMEL SIGN.**  
34.5 by 28ins. **Multicoloured** cowboy pictured  
holding up bartender 'THE OLDEST DISTILLER  
JOH HAIGS/ INSIST ON HAVING IT!/ THE BEST  
WHISKY/ IN THE WORLD'. Outer edge damaged,  
chips  
& rust  
etc.  
Very  
rare.  
NR  
£600-  
800+.  
(AB)





**174. WELLINGTON JOURNAL & SHREWSBURY NEWS PICTORIAL ENAMEL SIGN.**

25 19ins, policeman & maid pictured  
‘WELLINGTON JOURNAL & SHREWSBURY NEWS/ ...

EVERY SAT... “I DID/ AND I’M SUITED!” SAYS MARY’. Outer edge chips & rust etc. NR £400-600+.



**175. VIROLAX MULTI-COLOURED FRAMED CUT - OUT CARD ADVERT.** 25.5 by 25ins, gent & little girl wearing his top hat pictured ‘WE RECOMMEND/ VIROLAX/ THE NUTRENT LAXATIVE/ 11- & 2/8’. Very good. NR £150-200+.



**176. MAZAWATTEE MULTICOLOURED TIN TRY.** Grannie & little girl drinking tea ‘DELICIOUS/ MAZAWATTEE/ TEA/ OLD FOLKS AT HOME’. ‘MAZAWATTEE’ in raised lettering above & below. An early piece - fine strong colours. Very good. NR £250-300+.



**177. BUCHANAN’S MULTICOLOURED FRAMED ADVERT.** 26.5 by 20ins, stage coach & hunting scene pictured ‘BUCHANAN’S/ “BLACK & WHITE”/ SCOTCH WHISKY’. Original frame stamped ‘J. Buchanan & Co Ltd’. Very good. NR £150-200+.



**178. STOWERS LIME JUICE COMPOSITION ADVERTISING FIGURE.**

21.5ins tall, black boy figure holding plaque ‘STOWER’S/ LIME JUICE/ CORDIAL/ DELICIOUS HEALTHY/ & REFRESHING’. A delicate rare survivor. Overall very good. £550-600+.



**179. PETROL PUMP GLOBE.** 16.5ins tall, circular shape, white milk glass with

multicoloured image of a native American ‘THE PETROLEUM PRODUCTS CO/ CHANUTE KANSAS’ with ‘TIOGA GASOLINE’ in large black lettering around image. front & rear. Very good. NR £200-300+ (JR)



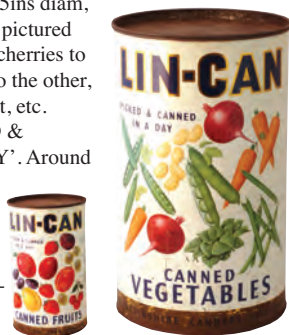


**180. J.S FRY & SONS LTD SAMPLES WOODEN BOX.** 17.75 by 9ins, compartments containing cocoa beans, shells, cocoa nibs etc. Paper label under lid 'SPECIMENS OF/ CHOCOLATE & COCOA/ IN THE RAW... J. S. FRY... BRISTOL, LONDON & SYDNEY/ MAKERS OF FRY'S PURE CONCENTRATED COCOA'. An exceptional shop display survivor. £250-300+.

**181. FRY'S WOODEN SHOP COUNTER TRAY.** 16 by 9.75ins, 6.5ins tall at rear 'FRY'S/ CHOCOLATE' to front & rear. Rare. £40-60+.



**182. LIN-CAN LARGE SHOP ADVERTISING TIN.** 14.5ins tall, 8.75ins diam, **multicoloured** fruits pictured plums, strawberries, cherries to one side vegetables to the other, peas, carrots, beetroot, etc. 'LIN-CAN/ PICKED & CANNED/ IN A DAY'. Around bottom edge 'Lincolnshire Cannors Ltd Bost (Lincs) and Kings Lynn. Good. NR £60-80+.



### SALE DAY FLOOR BIDDERS

- all items sold **AS SEEN**. Bidders must ensure lot/s meet personal condition standards.

**183. COURAGE METAL FIGURE OF A COCKEREL.** 12.25ins tall, **multicoloured** cockerel stood on plinth 'COURAGE/ BREWERS SINCE 1787' in **gold** raised lettering to plinth. rare. Very good. NR £80-100+.



**184. HONEY BEE BEE BRANDY MULTICOLOURED ENAMEL SIGN.** 36 by 12ins, 'HONEY BEE/ BRANDY A BIT OF FRANCE/ IN EVERY SIP' bottle & French man pictured. Stylish 'period' piece. NR £80-100+.



**185. CHIVERS MULTI-COLOURED FRAMED CUT-OUT CARD ADVERT.** Bowl of fruit with product tins 'CHIVERS/ FRUIT SALAD & CUSTARD/ A DELICIOUS COMBINATION'. Very good. NR



£120-150+.

**186. PALETHORPES FRAMED GLASS ADVERT.** 22 by 17ins, 'PALETHORPES/ ROYAL/ CAMBRIDGE' in **gold** lettering. Pack of sausages pictured on **dark blue** background. a super piece!



Very good. £150-200+.





### 187. DISPLAY CABINET. 33.5ins tall



to pediment top, 17ins wide, 7ins deep, wooden

construction, adjustable shelf slots, front door, mirrored back. 'C. CHRISTENSEN' in white lettering to pediment. NR £80-120+



**187A. SHOP DISPLAY CABINET.** 33.5ins tall to top of pediment, 17ins wide, 7ins deep mahogany construction. Two sliding doors to top half, two to lower. Adjustable metal shelf brackets. Curved sides. An attractive & truly magnificent mirror backed cabinet - possibly the finest we have ever offered, suit so many specialist wares. Heavy. Buyers to arrange delivery! NR £500-600+



Pharmacy.

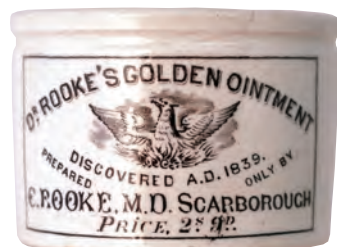
**188. PHARMACY DRUG RUN.** 26ins tall, 4ft 4ins long, 9.5ins deep, top half has 12 small drawers, lower 8 medium size drawers. All with gold & black glass labels and glass knobs (2 missing). NR £250-300



**189. POOR MANS FRIEND OINTMENT PERSPEX ADVERT.** 6 by 3.75ins 'PROVED BY 100 YEARS USE DR

ROBERTS'/ POOR MANS FRIEND/ OINTMENT/ FOR SKIN DISEASES' in black & red lettering. Amazing survivor - never seen another. Great ointments go with. Very good. NR £120-150+. (AB)

**190. DR ROOKES GOLDEN OINTMENT POT.** 2ins tall, 2.5ins diam, white glazed pot, black transfer '... DISCOVERED A.D. 1839/



PREPARED ONLY BY/ E. ROOKE M.D. SCARBOROUGH/ PRICE 2s 9D'. Phoenix rising from flames pictured. An all time classic ointment, rarely offered. Very good. NR £200-250+. (AB)

**191. GIBSONS MEDICINE SPOON.** 5.5ins long, pewter metal medicine spoon stamped 'GIBSONS/ INVENTION'. Rare. Very good. NR £60-80+.



**192. PATENT BABY FEEDER.** 6.75ins long. Clear glass banjo shape with integral thermometer embossed 'SNOW HILL BUILDINGS B.W. & CO/ LONDON/ PK & CO PATENT' compete with stopper & teat 7 instruction label underneath. Extremely rare. good. NR £60-80+.





**Cures &  
Poisons.**



**193. DR WEBSTERS EARLY MEDICINE BOTTLE.** 7.5ins tall, rectangular cross section bevelled corners, applied lip. Very heavily embossed 'DR WEBSTERS CEREVISIA ANGLICANA DUPLEX' one side 'PREPARED ONLY/ BY EDWD SLEE & CO' to other. Large raised coat of arms/ front shield 'LONDON' below. Despite lip damage & minor bottom edge flake this still represents a significant/ important early med. offering. NR £600-800+.



**194. DAFFY'S ELIXIR BOTTLE.** 5ins tall, ice blue glass rectangular cross section with bevelled corners, applied lip. Embossed 'TRUE/ DAFFYS/ ELIXIR' to front. Base cross hinge mould marks. A very early example in a delightful hue. Exc/ A1. NR £600-800+.



**195. 2 PINT WARNERS SAFE CURE BOTTLE.** 11.25ins tall, deep amber glass. Embossed 'WARNERS/ SAFE CURE/ LONDON' with the familiar safe motif t.m. Very good. NR £400-500+.



**196. HANDYSIDES CONSUMPTION CURE BOTTLE.** 11ins tall, tapering square shape, aqua glass embossed vertically 'HANDYSIDE'S/ CONSUMPTION CURE' to recessed panel at front. Applied facettted collar lip (with potstone mark). Very rare in this colour. Exc/ A1. NR £250-300+. (KB)

**197. LARGE SIZE PRICES PATENT BOTTLE.** 8.5ins tall, cobalt blue glass wedge shape bottle. Embossed 'PRICES/ PATENT/ CANDLE/ COMPANY LIMITED' with Diamond Registration mark to front. Rarely offered for sale. Very good. NR £200-300+. (KB)





**198. FULL PRICES PATENT BOTTLE.** 7.75ins tall, **cobalt blue** glass wedge shape bottle embossed 'PRICE'S/ SOAP/ COMPANY/ LIMITED' with registration diamond below, with contents & paper labels 'PRICES BEST GLYCERIN'. Very good. NR £170-220+.



**199. WARNERS SAFE COMPOUND BOTTLE.** 5.25ins tall, **amber glass** embossed 'WARNERS/ "SAFE"/ COMPOUND' with the familiar safe motif t.m. Exc/ Very good. NR £200-300+.



**200. WARNERS SAFE COMPOUND BOTTLE.** 6ins tall, **amber glass** embossed 'WARNERS/ "SAFE"/ COMPOUND' with the familiar safe motif t.m. Exc/ Very good. NR £200-300+.



**201. FULL & UNOPENED TURLINGTONS BALSAM BOTTLE.** 2.5ins tall, clear glass embossed 'TURLINGTONS BALSAM' to one side 'THE KINGS PATENT' to the other. With contents & original closure? An extraordinary survivor! Very good. NR £30-40+.



**202. MARTINS POISON.** (DP pg 82) 3.75ins long, aqua glass U bend shape, embossed 'POISON' both



sides 'PATENT' to round end '1 OZ' under neck. Very good. NR £120-150+. (NL)



**203. POISON CHEMIST ROUND.** (DP pg 96) 6.25ins tall, to top of chisel stopper, **cobalt blue** glass with horizontal ribs 'PUL V./ IPECAC. CO.' in **white** enamelled lettering near base. Very good. NR £60-80+. (NL)

**204. JOHNSON & JORGENSEN'S SHOP BOTTLE.** (DP pg 96) 7.25ins tall to chisel stopper top, **cobalt blue** glass, square shape curved ribs. 'LIN/ ACONITMETH' in **white** enamelled lettering 'POISON' below. To rear 'Rd No 335479'. Very good. NR £80-120+. (NL)



Saltglaze & early stoneware.

**205. BELLARMINE JUG.**

10ins tall, typical bulbous bodied bellarmine jug, **brown** salt glaze, detailed bearded face below wide neck, belly cartouche to front & both sides. Some restoration? NR £250-300+



**206. DATED 1603 BELLARMINE JUG.** 9.5ins tall,

typical bulbous bodied bellarmine jug. **Brown** salt glaze, bearded face to neck. Large dated belly cartouche '1603'. Some restoration. NR £300-400



**208. KISHERE NAMED JUG.** 6ins tall,

**brown** top lower **tan** salt glaze with raised motifs, windmill, acorns, cottage, huntsman hounds & stag. Kishere imp'd to base - very rare. Very good. NR £80-100+. (DD)



**209. DARTMOUTH PUB NAMED JUG.** 6.75ins tall, **blue & white** decoration with harvesting scenes all around. 'DARTMOUTH/

INN/ NEWTON-ABBOT' in **black** lettering. Very good. NR £150-200+.



**207. WESTERWALD VERY EARLY JUG.** 8ins tall. An

exceptionally early, c.1690 (?), bulbous bodied jug, turned bands, rim picked out in **blue**, medallion to front containing portrait of Queen Mary inscribed 'MARIA DG MAG BRIT FRANCE ET HIB REGINA', flanked by panels of scrolling stalks bearing flowers - picked out in **blue** set against a **manganese ground**. A significant & rare offering. Very good. NR £600-800+. (DD)





**210. PUB NAMED JUG.**  
3.75ins tall, **blue & white**  
oriental design all around  
'PARKER UTTELEY  
RAWSTRAW ARMS' in  
**black** lettering. Very  
good. NR £80-100+.



**211. PUB NAMED COVERED  
BOWL.** 6.25ins tall to top of  
cover, **blue & white**  
floral design all  
over  
'DECIMUS  
WILD/  
WHITE -  
BEAR/ INN 1856'  
to cover & bowl.  
Chipping to inside of  
bowl rim. NR £80-100+.



**212. MORLAKE  
LONDON SALT  
GLAZE  
HANDLED  
JUG.** 10ins  
tall to top of  
silver flip top  
lid. **Dark**

**brown** upper  
section lower  
**tan** salt glaze,  
raised panel to  
front featuring  
drinkers, panel  
with all over  
raised motifs,  
hounds,  
huntsmen, toppers  
etc. A superb  
example of it's  
type. Very good.  
NR £500-600+



**213. TOBY JUG.**  
8ins tall, **tan** salt  
glaze, snuff taker  
toby jug. Base  
inscribed  
'FULHAM'. Very  
good. NR £120-  
150+. (DD)



**214.  
LARGE**

**TYG.**

7.25ins tall,  
**brown** top,  
lower **tan**

salt glaze 3 greyhound handles with raised hunting  
motifs all around (The Kill) etc. A fabulously potted,  
highly detailed example. Very good. NR £150-200+.  
(DD)



**215. TWIN HANDLED  
BRAMPTON DISH.**

6.25ins tall, 12.75ins long, varying **tan** salt glaze,  
twin handled dish on raised base with raised floral &  
swags design. Impressed 'S & H BRIDDON'. Very  
rare! Fantastic quality, colouring & condition. Exc/  
A1. NR £170-220+



**216. STONEWARE JUG.** 9.5ins tall, **dark brown** salt glazed jug, inside atypical Clarkefield **grey green** slip glaze. Greyhound handle. Face mask below pouring lip, raised coat of arms to front reclining lions to sides, graped & vines below rim all heavily modelled. Simply a magnificent example of its type. Very good. NR £120-150+.



**217. BRIGHTON FISH FLASK.** 8.5ins long, **tan** salt glaze flask in shape of a fish (probably carp) various scale & fin details, cork to mouth with teeth details impressed 'BRIGHTON FISH' to side 'R. COOPER RAILWAY/ TERMINUS/ BRIGHTON' to top 'W. NORTON POTTER/ Really minute flake off tail otherwise very good. NR £1,200-1,500+. (DD)



**218. PUB NAMED LARGE SIZE LORD BROUGHAM REFORM FLASK.** 14.5ins tall, **brown** top, lower **tan** salt glaze half figural of Lord Brougham holding scroll 'THE/ TRUE SPIRIT OF/ REFORM' with 'G. LODDY/ WINE & SPIRIT MERCHANT/ SURRYSIDE/ WESTMINSTER BRIDGE' impressed to rear. Doulton p.m. below. Very good. NR £300-400+. (DD)



**219. TIPSTAFF FLASK.** 6.75ins tall, **mid brown** all over salt glaze crown top, Royal coat of arms in relief to front 'V.R.' to sides. An extraordinary unusual small size. Minute under edge flake otherwise very good. NR £150-200+. (DD)







**220. TIPSTAFF FLASK.** 11.25ins tall, **dark brown** top lower **tan** salt glaze, crown atop. Royal coat of arms in relief to front 'VR' in raised initials to rear. 'STEPHEN GREEN IMPERIAL POTTERY LAMBETH' impressed around base. In

manufacture 'flaw' aside foot, overall very good. NR £200-300+. (DD)



**221. TIPSTAFF FLASK.** 9ins tall, **very dark brown** (almost purple hue) top lower **pale tan** salt glaze, crown top. Royal coat of arms in relief to front 'VR' in raised initials to rear 'STEPHEN GREEN IMPERIAL POTTERY LAMBETH' imp'd round base. Never seen this small size before? Very good. NR £120-150+. (DD)

**222. PUB NAMED LARGE SIZE SPIRIT BARREL.** 8ins tall, **tan** salt glaze spirit barrel, raised lozenge to top with 'J & M UNDERHILL/ OLD/ TOM/ 1837' impressed. An extremely rare large size barrel. Very good. NR £170-200+.



**223. PUB NAMED SPIRIT BARREL.** 5ins tall, **tan** salt glaze impressed 'R. CRANCH/ MORTIMER ARMS/ TOTTENHAM CT RD' to front. Raised lozenge to top 'S GREEN POTTER LAMBETH' in raised lettering. Very good. NR £170-220+. (DD)



**224. PUB NAMED SPIRIT BARREL.** 6.5ins tall, **tan** salt glaze impressed 'W.R. KITSON/ FOUNTAIN NEW ST/ DOCKHEAD' to front, raised lozenge to top 'S GREEN POTTER LAMBETH' in raised lettering. Very good. NR £150-200+. (DD)



**225. LARGE DATED PORTER BOTTLE.** 14ins tall, champagne shape (quart?) bottle, **mid brown** salt glaze. Impressed 'W. COLLINSON/ 1819' across centre. A very rare, early & large dated item. Good. NR £80-120+. (DD)







**226. DATED MALLET WHISKY JUG.** 7.5ins tall, **brown** salt glaze, impressed in large print around shoulder 'MASON'S MALL/ 1823'. Lots of heavily modelled raised symbols all round set squares, beehives etc. Cockerel to neck. Very good. A truly outstanding example of its genre, they come no better! NR £500-600+. (DD)



**227. DATED FLAGON.** 10.75ins tall,

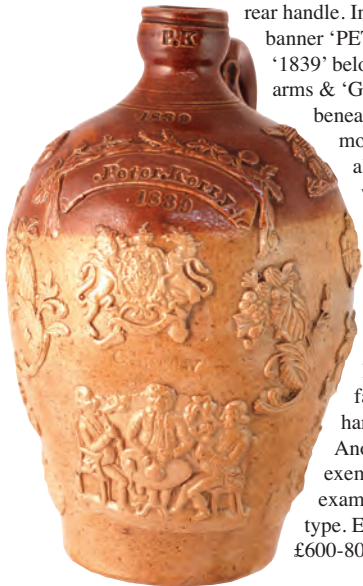
**brown** top, lower **tan** salt glaze, rear handle. Impressed raised banner 'PETER KERRY', '1839' below. Raised coat of arms & 'GLASGOW'

beneath that. Lots of motifs, heavy relief, all round:

windmill, toppers masons symbol, ploughman, 3 gents sat round table drinking etc.

Bearded face below handle to rear.

Another exemplary example of its type. Exc/ A1. NR £600-800+. (DD)



**228. BETHNAL GREEN SPIRIT FLASK.** 5.25ins tall, **dark brown** top, lower **tan** salt glaze. Early flask impressed 'T. EDMONSON/ 110 BRICK LANE/ BETHNAL GREEN'. with large characterful glaze thumb print/ blob below. Quite simply possibly the finest looking impressed hip flask we have ever offered - oozing character & charm? Very good. NR £450-500+. (DD)



**229. SPIRIT FLASK.** 5.75ins tall, **brown** top lower **tan** salt glaze rectangular shape sloping shoulders, impressed to front 'S. TAVERNER WINE & SPIRIT MERCHANT/ 100 NEW GRAVEL LANE'. Superb small size. Very good. NR £150-170+. (DD)

### CONDITION - help us to help you!

If you spot condition differences/ repairs we have not please advise BBR staff. As always we will announce such amendments prior to the sale.





200+.

**230. BRISTOL SPIRIT FLASK.** 5.5ins tall, **tan** top lower **off white** glaze flattened shape, handle to rear impressed to shoulder 'W. TILLY/ WINE & SPIRIT MERCHANT/ 23 OLD MARKET STREET/ BRISTOL'. Another characterful glaze 'touch' to side & Price p.m. imp. near base. Very good. NR £150-



**233. TICKHILL SLAB SEAL BLACKING JAR.** 4.75ins tall, **grey/ green** glaze seal reads 'MILNES/ OILS TICKHILL'. Possibly one of only 2 examples known. Very good. NR £300-400+.



**234. CHESTERFIELD SLAB SEAL PORTER.** 9.5ins tall, **grey/ green** glaze circular slab seal reads 'GUINNESS'S EXTRA DUBLIN STOUT/ JOHN WOOD/ SORSBY STREET/ VAULTS/ CHESTERFIELD'. Minor base chips. A distinctly different shape to the norm' with a huge applied slab. NR £350-400+.

**235. BOSTON SLAB SEAL FLASK.** 7ins tall, rectangular flask, ribbed sloping shoulders, **grey/ green** glaze, slab seal reads 'J. THORPE/ QUEENS HEAD/ BOSTON'. The only mint example recorded. Very good. NR £250-300+.



**231. SPIRIT FLASK.** 6.25ins tall, **brown** top lower **tan** salt glaze flattened shape flask impressed to shoulder 'BARKER & SON/ 49 BISHOPSGATE/ STREET WITHOUT' with '1/4 & 1/2' to front 'FULHAM STONE POTTERY' impressed to base.



Never seen

the side impressions before? Very good. NR £80-120+.



*Three flasks from the rediscovered late Dennis Northmore Collection - more in October.*



**232. LOWESTOFT SLAB SEAL PORTER.** 8ins tall, **grey/ green** glaze, pie crust slab seal reads 'P.J. BENSLEY/ GINGER BEER MANUFACTUR/ LOWESTOFT'. An unusual mid size. Very rare. Very good. NR £400-500+.



## Black glass.

**236. DATED SEALED ONION WINE BOTTLE.** 7ins tall, **dark olive green** glass but with a distinctive **blue tinge**, onion shape with **flat sides**, applied string rim, base pontil. Seal reads 'T. COCKE/ 1715'. Professional restoration to a very high standard (accompanying detached information). Something of an enigma - amongst the rarest of all black glass forms. £4,500-5,000+.



**237. DATED SEALED ONION WINE BOTTLE.** 6ins tall, **dark olive green** glass applied string rim. Base pontil, seal reads 'I.S./1723'. Very good. NR £1,500-2,000+.



**238. DATED ALLOA TYPE SEALED WINE BOTTLE.** 12.75ins tall, large squat cylinder shape, neck with flared lip & 8 applied rigaree ribbons to body, **dark olive green** with traces of white enamelled flecks, seal reads 'DN/ 1826'. Exc/ very good. £800-1,200+.



**239. DATED SEALED MALLET WINE BOTTLE.** 6.75ins tall, **dark olive green** glass, applied string rim, base kick-up pontil scar. Seal reads 'P DICKINSON 1752' body cracks & surface patination, smallest recorded sealed mallet. NR £300-400+. (AB)



**240. DATED SEALED CYLINDER WINE BOTTLE.** 11ins tall, **dark olive green** glass, 3 piece mould applied double collar lip, heavily struck large size seal reads, 'JOHN/ COLBY/ FYYNONE/ 1822'.

Grandfather of present owner of Fftnnonau Estate in North Pembrokeshire. Good. NR £250-300+



**241. DATED SEALED CYLINDER WINE BOTTLE.** 11ins tall, **dark olive green** glass, applied double collar lip. Low body seal reads 'B 1837' with crown above. Rare quart size. Exc/ Very good. NR £120-150+.

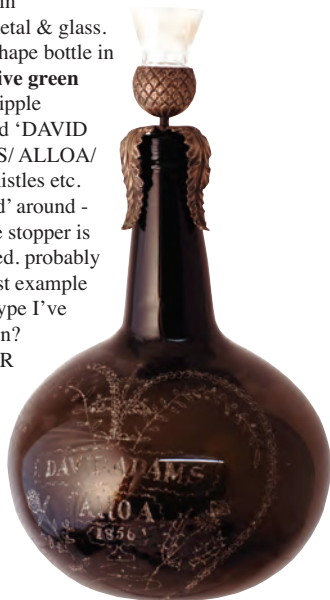


**242. FLASK IN THE FORM OF LADIES GENITALIA.** 6.2ins tall. **Heavy white milk glass** hip style flask (North East type?), pontilled end. Well detailed additions in **pink & clear glass**. An extraordinary piece of Victorian humour - an end of day production? £120-150+.



**243. ALLOA WINE BOTTLE.**

13.75ins tall, to top of thistle shape stopper in white metal & glass. Onion shape bottle in **dark olive green** glass, stipple engraved 'DAVID ADAMS/ ALLOA/ 1856' thistles etc. 'stippled' around - even the stopper is decorated. probably the finest example of this type I've ever seen? good. NR £250-300+.



*The next two lots are the initial offdering from the extensive Garth Morrison Collection which BBR will br 'trickling out' (as is our want) over the next couple of years. Plenty for everyone - full report, and pictures in BBR 140.*

**244. BATEY & CO BLUE BEER.** 10ins tall, to blob top. Deep vibrant blue glass. Fron tembossed with back to back lions heads, below a large seated Britannia image, 'Batey & Co/ Kings Lynn Rd'. Ornate chain design all round. L side/ rear ding - does not really detract. An exceptionally rare bottle, less than a handful recorded. NR £500-600+ (GM)



**244. BLUE & WHITE DECORATED TOILET.** 17ins tall, 21ins from front of pan to back of rear pipe. Heavily decorated blue floral transfer all over the sides and inside the pan itself. Across the top back rim, in black, 'The Closet of the century'. Brown transfer to centre 'G Jennings/ Sanitary Patent Engineer/ Palace Wharf/ Stangate/ Lambeth. Some minor damage to rear pipe, overall extremely good. A supendous survivor? £400-600+ (GM)



**346. CROSSE & BLACKWELL ADVERTISING PLAQUE.** (KM 687) 12.5 by 9.75ins, **multicoloured** ceramic plaque. Crosse & Blackwell premises pictured 'CROSSE & BLACKWELL/ PURVEYORS TO HER MAJESTY/ 21 SOHO SQUARE LONDON'. Impressed to rear 'T. J. & J. MAYER LONGPORT'. Spectacular rarity - the early version. Couple of very minor corner flakes & manufactory crack (to rear) around one of the naging holes, generally very good. Fantastic colours/ strike. NR £3,000-4,000+.







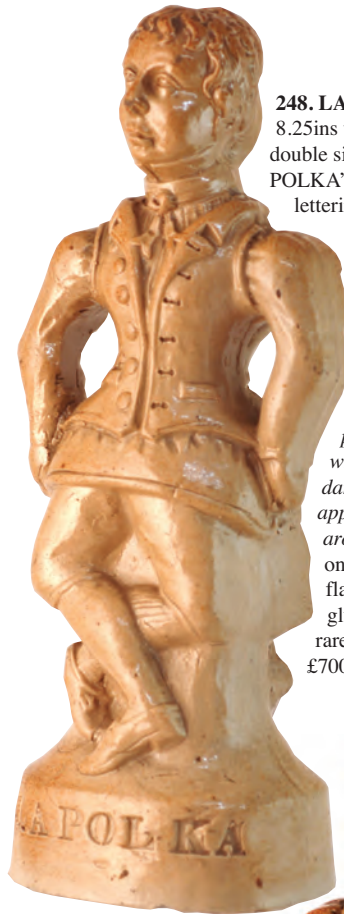
**247. MARISANTA CURE ALL POT LID.** 2.7ins diam. Multicoloured pot lid, with green coloured sides & original base (bottom chip). 'Marisanta/ a curative salve/ for all wounds/ cuts scalds burns festers/ gatherings boils whitlows chilblains/ draws and heals'. Central image



of poorly people walking up stairs on the L, with various ailments, & on the R walking out miraculously healed, having taken 'Marisanta'! NR £700-800+. (DD)

**248. LA POLKA FLASK.** 8.25ins tall, tan salt glaze double sided flask. 'LA POLKA' in recessed

lettering across plinth front. Heavily impressed 'J. STIFF/ HIGH ST LAMBETH' under base. *The only flask recorded from the Stiff Pottery probably produced when this daring new dance step first appeared in England around 1844. Also the only double sided flask. Head off/ reglued? Possibly the rarest of all flasks. NR £700-800+. (DD)*



## ABSENTEE BIDDING FORMS

Following a renaged bid BBR insists  
ALL Postal Bid sheets **MUST LIST**  
**FULL C.C.**  
**details** or bids **NOT ENTERED!**

**follow BBR Auctions**  
**on Facebook** - auction

results, News & Updates regularly  
added to FB - befriend us!

**Email**  
**contact?**

Always ensure  
your email is  
included on  
your bid sheet!

**249. ECLIPSE WASP WAIST POISON BOTTLE.**

(DP pg 30) 5.75ins tall, **cobalt blue** glass wasp waist bottle studded to front & sides, embossed 'POISON' below neck to front 'POISON' to rear with 'RD NO 460944' near base.

Base embossed 'THE ECLIPSE/ POISON BOTTLE'.

This remains the worlds **only** recorded wide necked wasp waist in this size. An exceptional & important offering.

Very good.

NR £6,000-8,000+. (NL)



# Notes

*email:* **sale@onlinebbr.com**  
**www.onlinebbr.com**

**Elsecar Antique Centre** open 7 days a week 10am - 5pm  
Upcoming auction lots on display in BBR's large green cabinets on the left.



# BBR Terms & Conditions

## CATALOGUE CONDITION TERMS:

As much care as is practicably possible is given to descriptions. Many items are of an age or nature precluding their being in pristine condition. We give serious consideration to concerns brought to our attention but reserve the right to disagree. Any additional information is generally mentioned before bidding begins but it is often not possible to contact absentee bidders at this point.

**We are always happy to answer questions before a sale but it is your responsibility to reassure yourself before purchase.** Generally we will indicate our judgement of lots quality & condition, giving due consideration to age & rarity. For guidance purposes only the following terms are used to give a feel of this judgement.

**Cleaned / Restored:** An object has been subjected to some restoration. Typically with glass items surface may appear tumbled or dipped, to remove unsightly patina or chips, or restored with resin. A ceramic item may have had portions replaced or re-glued. We recommend you examine an item or telephone for AB's assessment of the extent of such. Cat. descriptions may make reference to damage or restoration but omission of such does **NOT** imply a lot is free from defects, nor does a reference to a defect imply absence of others.

**Good:** We judge it to be a good example, displays well, minus overtly unsightly damage. An item that is not pristine with signs of use & age - might include scratches, tears, surface faults.

**Very Good:** The item displays minor signs of wear, apparent on close inspection. This may include inconsequential chips or flaws, some corrosion to metal parts, or minor damage in unseen area (*ie base or rear*).

**Excellent/ A1:** An item as near to possible pristine, taking into account age. A bottle might for instance have base wear but full body sheen & strong embossing - no chips or cracks. Any time of manufacture flaws or patina of age in this instance deemed either part of the character, or not detracting.

## IN SHORT

**Many items are of an age/ nature precluding their being in pristine condition. Some catalogue descriptions may refer to damage/ & or restoration. Omission of such does not imply a lot is free from defects, nor does any reference to a particular defect imply the absence of others.**

## IMPORTANT:

**No statement in this catalogue shall be deemed a warranty, representation or assumption of liability in respect of date, size, condition, quality, importance or provenance. Ultimate judge, & onus, is with the buyer.**

## BIDDING

The highest bidder is deemed the purchaser. Advances on each lot determined by the Auctioneer.

## BIDDING FOR SOMEONE ELSE?

**If you intend to purchase items for another person it is important you obtain a SEPARATE bidding number.**

## POSTAL BIDDING

Performed on behalf of absent buyers to buy items as cheaply as possible competing with other bids. No charge for this.

## POSTAL BID SHEETS

Tied bids - the first to arrive secures. This can result in bidding the same price as someone else but **NOT** securing. It is in your best interest to return forms soon as possible. **If you tel or fax bids through you MUST ALSO post off the bidding form, even though it may arrive after the sale.**

## ESTIMATES

Estimates are purely a guide - taking into account condition, rarity, & current market interests. Particular rarities, highly desirable, or unusual items can, & often do, exceed estimates.

## TELEPHONE BIDDING

**STARTS AT £200+, due to staffing logistics.**

## RESERVES

'NR' indicates lots **with NO RESERVE.**

## PAYMENT

Tel/ postal/ fax & floor bids are a legally binding contract. Purchases to be paid before taken away. Cheques to BBR Auctions. **Overdue accounts charged 3% after 21 days.**

## CREDIT CARD PAYMENTS

BBR accepts: **Visa, MasterCard, Visa Delta & Switch.**

Renegotiated bank charges now just a 3% levy for this.

**You must complete your credit card information on the postal bid sheet - inc. EXPIRY DATE & ISSUE No. & issue date for a Switch card.**

## POSTAGE

Postal purchasers **MUST** advise how they wish items sending.

Full p & p costs borne by purchaser. Following a sale we pack, weigh, & invoice for total amount, inc. p & p.

## POSTAL BUYERS

Packing & weighing can take 1 week to complete.

## BBR PACKING

**Generally our costs are much less than half competitors - such as Mailbox etc.** We try to keep costs low: packing time & materials used. We have extensive experience with all manner of shapes, sizes, & fragility, which may require special boxes! Very bulky or heavy items we suggest carriers rather than Parcel Force. If you have a preferential carrier **please advise when forwarding bids.**

## INSURANCE

BBR can insure goods in transit **IF REQUESTED. UK PO rates:** Extra insurance up to £1,000 goods value, £3.00 up to £2,500 value. **NOT** done unless specifically requested **at time of bidding. Please familiarise yourself with P.O. terms & conditions of insurance.**

## OVERSEAS PURCHASERS

Insuring goods requires declaration of **FULL** value. You decide disadvantages/ advantages regarding customs - & advise (on bidding sheet).

**AGENTS** In all cases BBR act only as agents between Vendor & Purchaser.

**COMMISSION** 15% buyers premium on hammer + vat.

## Bidding Increments

**UP TO £50** rising in bids of £2, £5, £7, £10 etc.

**After £50** bids rise in £5 steps. **After £100** bids rise

by £10. **After £200** bids rise by £20, £50, £70. **After**

**£500** bids rise in £50 steps. **After £1,000** bids rise in

£100 steps or **ALL** at the auctioneers discretion.

**Want additional information about any lot - just tel. BBR:**

**01226 745156 or email: alan@onlinebbr.com**



# Autumn Extravaganza

the largest specialist bottle event of its type in Europe

**Saturday 4 Oct** 500+ lot Unreserved Auction

**Sunday 5** MAJOR cat'd Auc. & **BIG** Show

120-150+  
stalls from all  
over the UK

**SAT. Auction:**

Doors 9<sup>am</sup>

Auction 11<sup>am</sup>

**SUN. Auction 11<sup>am</sup>**

E.E. 8.30<sup>am</sup> £5.

10<sup>am</sup> £2



run of 4  
Auc. cats.  
£20  
Paypal OK

Future BBR events: Oct 4 & 5 • Jan 31 & Feb 1 • Apr 25 & 26 **ALL** worth travelling  
from anywhere worldwide (1 hr M/c Int'l Airport) Planning ahead: 2015 SummerNational July 4 & 5

**BBR 'On the Road'**  
Auctions to be held at:  
Exeter 17 Aug  
Chessington 8 Sept  
FREE pdf downloadable (pre  
-order) off [www.onlinebbr.com](http://www.onlinebbr.com)

BBR, Elsecar Heritage Centre, Barnsley, S. Yorks., S74 8HJ, England tel: 01226 745156 email: [sales@onlinebbr.com](mailto:sales@onlinebbr.com)



**BBR Auctions, Elsecar Heritage Centre**  
**Barnsley, S. Yorks, S74 8HJ** *tel: 01226 745156*  
*email: [sales@onlinebbr.com](mailto:sales@onlinebbr.com)* [www.onlinebbr.com](http://www.onlinebbr.com)