

Sun 11th Sept Chessington Show

Community College KT9 2JS

BBR 'On the Road' Entirely Unreserved Auction

Commission 15% on hammer, immediate payment taken, we bring items to you.

S1. HORNER'S/ DEVONSHIRE/ CLOTTED/ CREAM... Tall all white bodied cylinder with purple transfer to front (8 lines of writing) & rear (14 lines). Exc A1 condition



BBR is dispersing several collections - lots carry provenance initials:
NL = Norman Lewis
KB = Kevin Boyle
CM = Chris Mortimer
GM = Garth Morrison
MH = Michael Harris
AB = Alan Blakeman



S5. 'JOHN HARE'S/ STONE GROUND/ SELF-RAISING/ FLOUR/ HENLOW/ BEDS'. Rectangular cloth sacks, 11.5 x 7ins tall. red printed to front. Minor creases - generally very good. 94) (NL)

S6. J MILLS & SONS LTD/ OSSARY ROAD/ LONDON SE. impressed both sides of a t.t. flagon. Base spigot, metal handle. Doulton & Co p.m. Good.



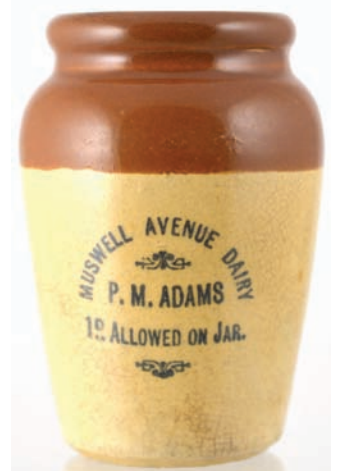
S2. PHILPOTT/ 1892/ RAMSGATE' 10oz aqua codd with extraordinary bulb neck featuring 4 indents to the top of the bulb. Rear embossed 'J W Dobsons/ Patent/ Barnsley'. Exc/ A1



S3. PROBYN'S/ GINGER BEER, std, t.t, g.b. Excellent strong rubber stamp of shapely lady to centre, unicorn t.m. above. Bourne Denby p.m. Under edge base flake & rear hairline



S7. 'WHEELERS/ WYCOMBE'. 10.3ins tall, heavily embossed black glass beer with large spread winged swan pict. t.m. to centre with ornate outer border. Exc/ A1

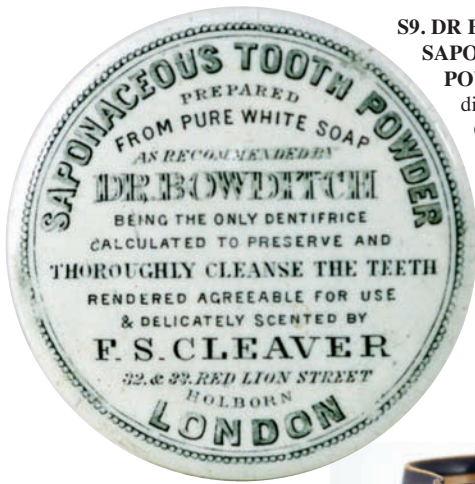


S4. J. MILLS BEEHIVE TOP DUO. A 6oz aqua codd, heavily embossed front & back, includes 'Rd 43102' both sides of neck pinch, plus a very dark brown/ black glass g.b. Both fairly good (2) (GM)



S8. 'MUSWELL AVENUE DAIRY/ P.M. ADAMS/ 10 ALLOWED ON JAR' black transfer on fat bodied t.t., cream pot. Some staining, no damage

Tried • Tested • Trusted
www.onlinebbr.com
more sales...
more often



S9. DR BOW DITCH/ SAPONACEOUS TOOTH POWDER pot lid, large 3.4ins diam, 14 transferred lines. Overall very good, near side hairline.

S10. 'DEWARS/ WHISKY' stoneware water jug, 4ins tall, dark green top, lower tan salt glaze. Spigots all round plus sprigged lettering to front belly, 2 tiny lip flakes. Doulton mark imp'd to base.



S13. Pair of early freeblown black glass cylinders, one wide bodied squat, 9.25ins tall, other 8.2ins (fabulous lip finish!). Both pontilled. Taller has some shoulder dullness otherwise both good (2)



S14. 'SPENDIFF BROS/ FAVERSHAM' black transferred 2 1/2 gall handled flagon, spigot to base. T.t. lrg black transfer with big central pict. t.m. Skey p.m. Very good.



S11. ALEXANDRA PALACE mineral water duo. Stumpy green seltzer type with internal screw stopper, plus tall aqua blob bottle. Both heavily embossed & featuring entwined initials t.m. Good (2)

S15. 'WIGTOWNSHIRE CREAMERY/ STRANRAER' off white, wide necked, cream pot. 4.5ins tall, really excellent detailed black transfer with large milkmaid pict. Very goo/ Exc



S16. SIX BOXED SETS OF GUINNESS PLAYING CARDS. 4in heavy card boxes, variously coloured/ decorated, 1 in green padded box, smallest box as 2 books. Good (6)

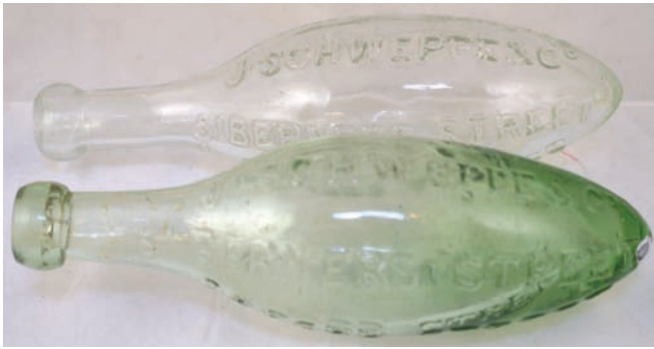
S12. CODDS/ PATENT/ 4/ LONDON/ SE aqua glass, early narrow neck codd. rare square edge based codd embossed to base 'Ardsley/ Nr Barnsley'. Small neck stress crack - does not detract. A very rare offering!



ABSENTEE BIDS

Should reach BBR no later than Thursday email/ tel to double check: sales@onlinebbr.com

**LATE ENTRIES TAKEN ON THE DAY
catch AB EARLY - SAME DAY PAY OUT**



S17. PAIR OF SCHWEPPE'S HAMILTONS. Two approx 9.4ins long. Point based hamiltons - 1 aqua, 1 clear glass (not old). Both embossed 'J Schweppes & Co/ Genuine Superior/ Aerated Waters. Good (2) (GM)

S18. 'LACTIC BACILLI/ MILK/ PREPARED BY/ THE/ EXPRESS DAIRY CO LTD'. Straight sided, off white, wide necked pot. Black transfer. Base imp'd 'Causton Makers & Co/ London' with regd no. An unusual offering. Minor wear, rusting



S19. 'THE CHELTENHAM MINERAL WATER CO' upright deep golden amber/ brown cylinder. 9.2ins tall, (top of stopper). Heavily embossed all over with pict t.m. to one side. Exc. Superb looker? (GM)



S21. CLAYTON'S/ PURE/ TABLE WATERS' 2 gall t.t. flagon, metal handle, base spigot. Imp'd to rear 'Clayton's/ London SW'. Good.



ABSENTEE BIDS
Absentee bids to be with
BBR no later than
Thursday prior or email:
sales@onlinebbr.com

S22. JOSIAH/ RUSSELL/ & CO small size vibrant green glass round ended cylinder, 7ins long. Three heavily embossed lines of writing. Fabulous colour & condition (GM)



S23. EPSOM clear glass bottle, 7.8ins tall. Very heavily embossed 'R & M' to shoulders, 'Randall/ Measures/ high Class/ ... Mineral Waters'. To rear 'Open/ with/ a coin'. Most unusual. very good (GM)



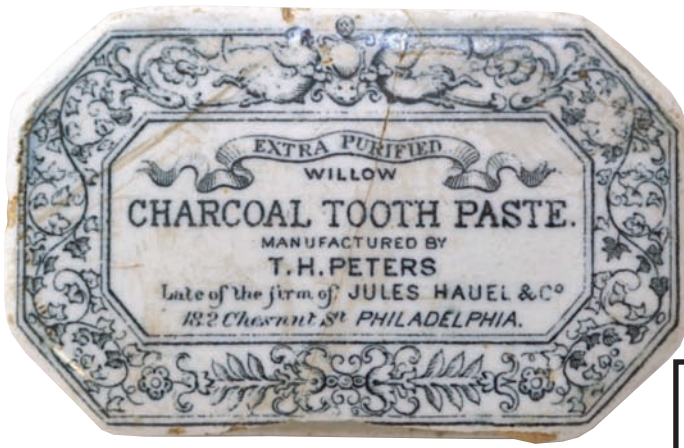
S20. 'R H CUMBERS & CO/ CHISWICK' upright aqua mineral. Embossed to rear 'Chapman's/ Patent/ birkenhead'. Ball intact. Minor wear - overall very good (GM)



S24. PAIR 'HAIG/ SCOTCH WHISKY' oval ashtrays. Largest 5.5ins long. Vivid red glaze with 4 black transfers all around. Transferred 'Carltonware' to base. Exc (2)



CONDITION Before bidding please ensure items meet your condition requirements - **INSPECT!** On sale day **ALL** items sold - **AS SEEN, NO RETURNS**



S25. JULES HAUEL & CO/ ... PHILADELPHIA' rectangular pot lid & base. Highly ornate transfer & outer border. Embossed all around the base 'TM peters & Co...' Damaged - worth restoring (AB)

FULL RESULTS
will be posted on BBR's website & FB page - Mon or Tues after, also on all forums, or simply email AB for the pdf: sales@onlinebbr.com

S29. FORTNUM & MASON LIMTD/ POTTED GAME' Large size pot lid, 4ins diam. Equally large, detailed, coat of arms to centre. rear underside long flake/ chip & a 'blow mark' to letter 'P' on Piccadilly



S27. 'COHENS/ 438 CALEDONIA ROAD LONDON' champagne necked aqua mineral. Large lion pictorial one side. To rear 'Manufacturers/ Alexandra and Austin London/ Cohens Patent'. Some sickness. Very rare (GM)

S26. OWEN J CARTER & CO/ Wine & Spirit Merchant/ CHATHAM'. 1 gallon flagon, t.t., imp'd to shoulder '1047'. Very good



S30. PAIR OF COLOURED PRATT LIDS 1. 'The Wolf And The Lamb' multicoloured pot lid - good strike & colours. Several chips underneath 2. The Late Prince Consort - cracked (neatly) in half (2)



S28. 'BATEY/ B & Co Ltd' bright green curvilinear bod top ginger beer. To rear 'ALBION'. Base also embossed. Delightful vibrant colour. Very good (GM)

S31. TWO ORIGINAL BLACK & WHITE SHOP FRONT PHOTOS. One featuring a shop window for 'Wolsey' clothing (8 x 10ins), other features a shop window of shirts (4.3 x 6ins). By 'S Shrubbs/ Farnham'. Great - esp big one!





S32. MAIDSTONE & LONDON 1 gallon handled (damaged) t.t. flagon with bottom spigot. really great front **black** transfer, ornate 'I Sherwood, Foster & Stacey...Brewers...Spirit Merchants'.

S33. GUILDFORD 'CODDS PATENT/ 4/ MAKER/ DAN RYLANDS/ BARNESLEY'. "CASTLE BREWERY..." front 5 lines embossed across this good condition 10oz codd



S37. COLD CREAM POT LID. 2.75ins diam, large lettering to centre with very ornate border. Some rusting in the staining - will clean easy - otherwise good



CONDITION REPORTS

Absentee bidders can
tel: **01226 745156** or email:
sales@onlinebbr.com

S34. 'J MILLARD & CO/ 64 SEYMOUR ST/ MARBLE ARCH W' - front panel of a square base, 9ins tall rectangular square bodied bottle with faceted corners. very minor internal stain. Heavy blood lip. Good



S35. CARRICKS CUMBERLAND/ DAIRY CO LD/ PURE/ Thick Cream/ Fresh Daily/ Low Row/ Nr Carlisle'. Off white handled cream jug, 4ins tall. very well potted. Good



S38. 'CSSA' impressed to the shoulder 1 gall t.t. handled flagon. Lrg Doulton & Co/ Limited/ Lambeth' p.m. Sure someone will know where it is from?

FUTURE BBR AUCTION ENTRIES

can be dropped @ the BBR stall at ANY UK Show.
Please advise if there is any volume so
we can accommodate for our return trip!

LATE ENTRIES TAKEN FOR THIS SALE ON SHOW DAY - catch AB EARLY SAME DAY PAY OUT



S39. WEBB'S/ LONDON
round bottomed
cylinder, 9.5ins
long, blob lip,
heavily
embossed.
Superb/ gorgeous
red brown glass.
(9.5/10) (GM)



**S40. HILLS/ CHAPMAN & CO/
CAMBERWELL** small 7.3ins aqua glass
mineral with wired on metal closure with raised
lettering to cap 'Cohens/ London/ Patent'. Rarely
intact. very good (GM)



**S41. 'The Shepherd Boy' multicoloured pot
lid (KM 280).** Good strong strike & colours -
view of shepherd & trusty dog overseeing the
safety of his
flock.
Exc/
A1



BBR Auctions

Tried • Tested • Trusted
www.onlinebbr.com
more sales...
more often

**S43. FENN FARNHAM 10oz aqua bulb style
codd** (odd indents above shoulders). to rear
base '4' & 'reliance Patent/ Sole Maker/ Dan
Rylands/ Barnsley'. Some cloudiness. Unlike
any other Reliance I've seen? (GM)



S44. LONDON SUPER AERATION
green top, std, g.b. Large transfer with
pictorial of lady & radiating lines. Lovatt
& Lovatt p.m. Minor flake, overall a
really good example

**S45. BUSHELL
WATKINS & SMITH
LTD/ WEESTERHAM/
KENT**, t.t., 2 gall flagon,
metal carrying handle. 4
imp'd lines - '1097' at top.
Very good.



**S42. BARRETT & CO Ltd/
LONDON dark/ black
glass g.b.** Pictorial patent t.m. to front,
to rear 8 further heavily embossed lines



of
writing
7.4ins
tall.
Some
minor
(to
clean?)
patches.
Superb!
(GM)

**S46. 'WRIGHTS DAIRY/
CHURCH ST CHELSEA' 4.3ins
tall, cream bodied straight sided
cream pot**, wide top (for card
cover). Transferred with 5 lines
writing & entwined initials to
centre. Quite a scarce pot. Very
good



A photograph of a yellow glass bottle, likely a medicine bottle, with embossed text. The visible text includes "THE M. THE O.", "HOOPER & CO.", "PA. L. MAINE", and "NEW YORK". The bottle has a rounded body and a narrow neck with a stopper.

8.5ins tall. Embossed in 2 lines to one side. great shape and most unusual? Some haze (GM)

A small, yellowish, rounded glass bottle with a narrow neck. The bottle has faint, embossed text that reads "ROTHSCHILD" and "CHATEAU". The bottle appears to be made of aged or recycled glass, with some surface texture and minor imperfections visible. The lighting is soft, highlighting the bottle's shape and the embossed details.

4/- DEPOSIT.
26. LI.

HOLDSWORTH
WALTHAM CROSS

**S50. KINGSTON
BREWERY/ H.K.B.
Co LD/ SURREY**
pint sized black glass
beer, 10ins tall. Very
heavily embossed with
large central pict. t.m.
of a 'K' & barrel plus
3 fishes. Fabulous!

Autumn Extravaganza

S74 8HJ Europe's **LARGEST** specialist quarterly event of its type

Ebucac Heritage Centre
S74 8HJ

120-150+ stalls from all over the UK

• **Many rooms off site**
• **Outdoor charter**
• **New dealers**
• **Many fully stocked**
• **Autumn Centre**
• **£50-1000 items**
• **1000 Auctions**
• **All under 1 hour**
• **FREE Parking**
• **All day catering**

Saturday 1 Oct

Sunday 2 Oct

MAJOR cat'd Auc. & BIG Show

the saleroom

Sat 1. 11.. Unres'd Auction
Doors 9am 500+ Unreserved lots - across every collecting field - suitable entries - deliver to Ebucac as soon as possible

Sun 2. cat'd Auc. 11.. plus the BIG Show
120-150+ stalls E.E. & 500+ CS. 0rd Adm'n 10am £2
Auc starts 11am Pot ldr, whisky pils, PKs, CUPS, Advertising, pelicans, g.b's, salt glaze, black glass. Every Sun lot cat illu'd.

BBR, Ebucac Heritage Centre, Barnsley, S. Yorks, S74 8HJ
Tel: 01226 745156 email: sales@onlinebbbr.com www.onlinebbbr.com

rest 4
Auc. 01226 745156
ppl'd 03
Pppl'd to 03/08/08

BBR Terms & Conditions of sale

CONDITION

ALL ITEMS SOLD AS SEEN - buyers must satisfy themselves of condition - **STRICTLY NO RETURNS**

Many items are of an age/ nature precluding their being in pristine condition. Some catalogue descriptions may refer to damage/ & or restoration. Omission of such does not imply a lot is free from defects, nor does any reference to a particular defect imply the absence of others.

IMPORTANT

No statement in this catalogue shall be deemed a warranty, representation or assumption of liability in respect of date, size, condition, quality, importance or provenance. The ultimate judge, and therefore onus, is with the buyer.

BIDDING

The highest bidder is deemed the purchaser. Advances on each lot determined by the Auctioneer.

BIDDING FOR SOMEONE ELSE?

If you intend to purchase items for another person it is essential you obtain a **SEPARATE bidding number AND PAYMENT DETAILS.**

POSTAL BIDDING

Performed on behalf of absent buyers trying to buy items as cheaply as possible competing with other bids. No charge for this.

POSTAL BID SHEETS

Tied bids - first to arrive secures - this can result in bidding the same price as someone else but **NOT**

securing. It is in your best interest to return forms soon as possible. **If you tel or fax bids through you MUST ALSO post off the bidding form, even though it may arrive after the sale.**

EVERYTHING OFFERED NO RESERVE

PAYMENT

Tel/ postal/ fax & floor bids are a strictly legally binding contract. Purchases must be paid for immediately.

CREDIT CARD PAYMENTS

Not available on sale day as away from BBR office. Postal successes conducted upon return..

POSTAGE

Postal purchasers **MUST** advise how they wish items sending. Full p & p costs borne by purchaser. Following a sale we pack, weigh, & invoice for total amount, inc. p & p.

POSTAL BUYERS

Packing & weighing can take one working week to complete - **please remain patient.**

BBR PACKING

Generally our costs are much less than half competitors - such as Mailbox etc. We try to keep costs low: packing time & materials used. We have extensive experience with all manner of shapes, sizes, & fragility, which may require special boxes! Very bulky or heavy items we suggest carriers rather than Parcel Force. If you have a preferential carrier **please advise when forwarding bids.**

INSURANCE

BBR can insure goods in transit **IF REQUESTED.** **UK PO rates:** 75p up to £150 goods value, £1.35 up to £500 value. **NOT** done unless

specifically requested **at time of bidding.**

The PO does not insure for pottery or glass - only consequential loss

OVERSEAS PURCHASERS

Insuring goods requires declaration of **FULL** value. You decide disadvantages/ advantages regarding customs - & advise - on bidding sheet.

AGENTS In all cases BBR act only as agents between Vendor & Purchaser.

COMMISSION 15% buyers premium on hammer plus VAT.

PRICES REALISED: Email: sales@onlinebbr.com, also downloadable off BBR website: www.onlinebbr.com, OR send a stamped addressed envelope.

HELP US TO HELP YOU! If you spot damage or condition differences we have not **PLEASE INFORM US!**

before bidding by post, or at the sale, it is important to read, fully understand & accept BBR's Terms & Conditions

www.onlinebbr.com

BIDDING INCREMENTS

UP TO £50 rising in bids of £2, £5, £7, £10 etc.

After £50 bids rise in £5 steps. **After £100** bids rise by £10.

After £200 bids rise by £20, £50, £70. **After £500** bids rise in £50 steps. **After £1,000** bids rise in £100 steps

Toward conclusion rises at auctioneers discretion.

Want additional information about any lot?

The last thing we want is anyone to receive something not what they thought. We therefore ask you to tel. for a more specific condition report

Tel., leave lot numbers interested in, call back 5 mins later, when items will be by the phone for AB to describe.