

Sun 14th August Exeter Show

Exeter Racecourse EX6 7XS

BBR 'On the Road' Entirely Unreserved Auction

Commission 15% on hammer, immediate payment taken, we bring items to you.



E1. BLACK GLASS PLYMOUTH BEER (well dark green!). 9.5ins tall, heavily embossed 'Imperial Pint' round shoulders. To front 'JR Wilson' pictorial man t.m. (9/10)

BBR is dispersing several collections - lots carry provenance initials:
NL = Norman Lewis
KB = Kevin Boyle
CM = Chris Mortimer
GM = Garth Morrison
MH = Michael Harris
AB = Alan Blakeman

E5. DEVONPORT TEAPOT. 5ins tall, multicoloured image to front of seafront view. Victoria Austin transferred to base. Couple lip flakes otherwise exc. (9/10) (GM)



E2. BARNSTABLE & BIDEFORD std, g.b., all tan. 'C.C. Dornet & Co' pictorial tree t.m. Rear in-manufacture 'blow' mark. Price Bristol p.m. **Plus** all with variant (2) (9/10)



E6. REDRUTH BREWERY CO std, all tan, g.b. Large pict. t.m. of bird carrying a basket with figure in it feeding a hungry moon! Price Bristol p.m. Exc/ A1 (10/10)



E3. THE BLUE BOY multicoloured pot lid. 4.7ins diam. Excellent colours & strike. Exc/ A1 condition. (10/10)



E7. DEMIJOHN, 13.75ins, mid green glass. Raised area to shoulder with a '5'. Crude base, pontilled. Some internal rear residue - should easily clean. (9/10)



E8. POLLEY'S/ HOME BREWED GINGER BEER, std, all white. Strong black transfer within 2 concentric circular borders 'Established/ 1860' to centre. Price Bristol p.m. Exc/ A1 (10/10)

E4. WHITMARSH/ PLYMOUTH 6oz aqua codd with white looking marble? Heavily embossed with key pict. t.m. to front 'Wm Barnard/ ...London' makers. Exc/ A1 (10/10) (GM)



Tried • Tested • Trusted
www.onlinebbr.com
more sales...
more often



E9. T Denniford/ & Son/ Ltd/ Plymouth. Clear glass acid etched soda syphon listing various places (3 in Australia?) where prize medals were awarded. Good. (9/10) (GM)

E10. BLUE INKS TRIO.

Tallest circular 2.8ins, large size boat (mid blue), standard boat (dark blue) - couple of lip flakes. (3) (8/10) (MH)



E13. PAIR PLYMOUTH t.t., std, g.b's. 1. 'Brachers/ Brewed/ Ginger Beer.' (2 base flakes) 2. Scranton House with a buckled belt. Price Bristol p.m.



E14. GLOBE 10oz golden amber codd. Very heavily embossed with familiar sunburst above 4 lines for maker (Redarken Bros...), to other side 'Groves & Whitnell' & 'Salford' vertically. Exc/ A1 - as good as they get (10/10) (AB)



E15. EYEBATHS GROUP. A mixed variety including glass, ceramic & rubber, freeborn & mounded. Various colours. 98) (9/10) (NL)

E11. GLEN GARRY OLD HIGHLAND WHISKY

stoneware handled jug, top tan, lower off white. Detailed black transfer depicting a corkscrew. 'John Hopkins/ London and Glasgow'. Port Dundas p.m. (9/10)



E12. HARDINGS DAIRY stoneware cream pot. 3ins tall, t.t. Black transfer 'RICH CREAM/ BITTERNE PARK CREAMERY'. Very good. (9/10)



E16. TRURO TEAL BLUE CODD 6oz capacity, 4 large lugs to neck, marble in base. Boldly embossed 'WHO MALLETT & CO/ TRURO'. Thin lip flake. Fantastic colour. (9/10) (GM)



ABSENTEE BIDS

Should reach BBR no later than Thursday
email/ tel to double check:
sales@onlinebbr.com

**LATE ENTRIES TAKEN ON THE DAY
catch AB EARLY - SAME DAY PAY OUT**

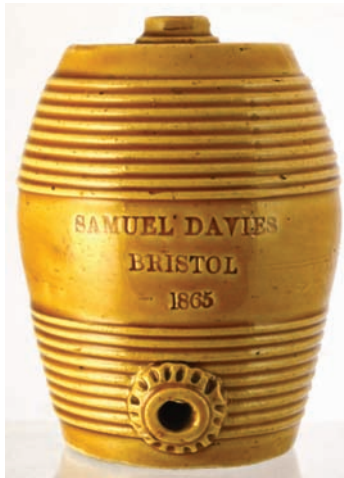


E17. TORQUAY MINERAL WATER COMPANY g.b. duo. One std all white, other ch. t.t. Both featuring the initials within carved banner & 'Health' within. (2) (9/10)

E18. Pair of acid etched soda syphons 'COLLIERS/ STORES/ PLYMOUTH' with coat of arms & 3 plumed logo. 2. Plymouth/ Breweries, nibbed type, with asymmetric design. (2) (7/10) (GM)



E19. BRISTOL MINIATURE BARREL. All tan, .ins tall, shiny glazed barrel, raised rings to top & lower, top & bottom spigot. Impede 'Samuel Davies/ Bristol/ 1865'. Exc. (9/10)



E20. NEWTON ABBOTT CO-OPERATIVE SOCIETY/ EDUCATIONAL COMMITTEE milk (?) jug. 6ins tall, white body, orangey - red transfer with buckled belt surround. 'Palissy' to base. Exc (9/10) (GM)



CONDITION Before bidding please ensure items meet your condition requirements - **INSPECT!** On sale day **ALL** items sold - **AS SEEN, NO RETURNS**



E21. 'SK SKINNER/ EXETER', 10oz aqua narrow necked codd. Entwined initials to centre. To rear 'Codd's Patent/ 4/ Makers/ rylands & Codd/ barnsley.' Very good. (9/10)



E22. BOWER HINTON SUNDAY SCHOOL ceramic beaker. All white glaze, 4.5ins tall, strong black transfer depicts buildings & records 'Centenary 1831-1931'. East of Taunton now Martock. Minor hairline to L rear. (8/10) (JR)



E23. PAIR PLYMOUTH g.b's, std, t.t. 1. W H Harris & Son/ Brewed/ Ginger Beer' - entwined initials t.m. 2. WG Erricker/ Home Brewed Ginger Beer' - horseshoe t.m. (2) (7/10)



E24. PONTILLED decanter? 6ins tall, aqua glass (full of seed bubbles), flared lip, base pontil. Quality engraved pictorial ship to one side, scroll decoration to other. (9/10)





E25. DOULTON LAMBETH STONEWARE DISH.
2.3ins tall, multicoloured glazes - blue, dark & light green, brown etc. Various base marks, 'GS' signature etc. Very good - nay - fantastic. (10/10) (AB)

FULL RESULTS

will be posted on
BBR's website & FB
page - Mon or Tues
after, also on all
forums, or simply
email AB for the pdf:
sales@onlinebbr.com



E29. DEVONPORT g.b. trio - all c.c., t.t. Three variants for the 'Devonport/ Mineral Water Co.' Price Bristol p.m. Good. (3) (9/10) (GM)



E26. DEVONPORT cast iron plaque. 7ins wide, rectangular with curved top. Two raised lines of lettering 'RW STEPHENS/ DEVONPORT'. Two fixing holes. Some corrosion but perfectly sound. (7/10) (GM)

E30. JOHN HARE'S/ STONE GROUND/ SELF-RASING/ FLOUR/ HENLOW/ BED.'
Off white cotton sacks with 6 lines of red lettering. (20) (8/10) (NL)



E31. 'THE KNOCK/ FURNITURE/ CREAM' blue transferred narrow neck pot. 4.5ins tall, 6 lines of writing surrounded by decorative outer border. Buchanan p.m. Rear lip flake. (8/10) (AB)



E27. PRICES/ CELEBRATED/ COLD CREAM. Portmerion style cylinder, 6.2ins tall. Off white body glaze with large black transfer to front set on a mid brown background. (8/10) (GM)



E32. REDRUTH small, 7ins, aqua hamilton. Embossed 'Stolen From/ West of England/ Redruth Brewery/ Company/ Aerated Waters'. Plumed t.m. above a shield design. Good. (8/10) (GM)



E28. 'POISON/ NOT TO BE TAKEN' aqua bottle, 10.5ins tall, Curved rectangular shape, embossed to narrow sides & ribs, wire bail type closure. Base embossed. Unusual. (9/10) (GM)

CONDITION REPORTS

Absentee bidders can
tel: 01226 745156 or email:
sales@onlinebbr.com



E33. LAUNCESTON teapot. 5.3ins tall, castle to one side but more importantly the reverse depicts the named shop 'EDMAN SHUKER GROCER CHEMIST DRUGGIST... MARKET STREET' - fabulous shop front. **Gold** decoration around. Great. (9/10) (GM)



E34. TINS TRIO. Largest 3 x .ins. 1. Princess of Wales/ Landes Speciality. 2. Players/ Country/ Life/ Cigarettes' 3. 'Nestor/ Gianacis/ Cigaretten/ Queen' - Very colourful. Various conditions (3) (7-8/10)



E35. HOLLOWAY'S/ OINTMENT transferred pot. Classic Victorian pot covered all round with a **black** transfer & seated Amazonian female & child (t.m.) Some wear (7/10) (AB)

E36. MUMBY & Co Ltd/ PORTSMOUTH amber glass acid etched soda syphon. Oval design with large coat of arms to centre. Couple of dings & lip stress cracks, overall clean. (7/10) (GM)



E37. 'BISCOMBE PLYMOUTH SODA WATERS' earthenware ashtray, 3.25ins diam, overall **creamy brown** glaze, incised lettering, striking 'dome' roughened. Very good. (9/10) (GM)



E38. 'PLYMOUTH/ R W MILLER & CO', half pint shouldered black glass beer. Heavily embossed to front surrounded by outer border. Base embossed 'P & R B' (Powell Ricketts Bristol) (8/10) (GM)



E39. 'LISKEARD COUNTY COUNCIL/ LISKEARD INSTITUTION', white ceramic urinal with handle. Every Cornish household should have one! (9/10) (GM)

FUTURE BBR AUCTION ENTRIES

can be dropped @ the BBR stall at ANY UK Show.

Please advise if there is any volume so we can accommodate for our return trip!

LATE ENTRIES TAKEN FOR THIS SALE ON SHOW DAY - catch AB EARLY SAME DAY PAY OUT



E40. ST COLUMB 1822/ FARMERS ARMS giant bargeware teapot, 9.5ins tall. Shiny brown glaze with various coloured cartouches. Extremely early date & rare size. Spout portion in envelope. No lid (8/10) (JR)



E41. J H Ferguson/ Ginger/ Brewed/ Beer/ Plymouth, std, all white, strong & crisp blue transfer. Extremely fine/ exc/ A1 example. (9/10)



E42. BARNSTAPLE clear glass acid etched soda syphon, 'STARKEY KNIGHT & FORD, pictorial trade mark of galloping horse 'Unapproachable'. Very good. (9/10) (GM)



E43. DEVON g.b. trio. all std, all white. 1. Ilfracombe 'North Devon Mineral Water Co' 2. 'E Petter & Son/ Barnstaple, anchor t.m. 3. Philbrick/ Brewer/ Bideford, 2 Price Bristol p.m., 1 Powell Bristol (3) (8/10) (CM)

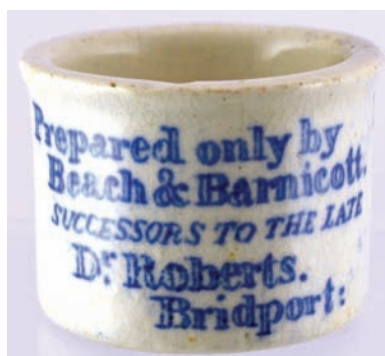


E44. 'THE PROPERTY OF/ CALMIC Ltd'. All off white glaze on a rectangular body with black transfer to front, internal screw top, 2 air holes. Very good. (GM)



E45. SALTRAM & FALMOUTH bedwarmers. 1. SALTRAM all cream body, transfer both sides. Vulcanite screw stopper. 2. 'FROM/ BEST & COS/ GLASS & CHINA STORES/ FALMOUTH', t.t. Price Bristol p.m. Good (2) GM)

E46. POOR MANS FRIEND ointment pot, blue transfer both sides. (Price 1/1 1/2), to reverse 'Prepared only by/ Beech & Barnicott/ Successors to the late/ Dr Roberts/ Bridport'. Very good. (9/10) (AB)



E47. DARTMOUTH/ PA W CO', 10oz codd with 4 large retaining lugs to neck, marble to base, aqua glass. Overall minnor scuffs & internal haze. An early mineral water (7/10) (GM)



BBR Auctions

Tried • Tested • Trusted
www.onlinebbr.com
 more sales...
 more often



E48. CRUISKEEN/LAWN/ MITCHELL'S/ OLD/ IRISH WHISKY/ BELFAST' ornately transferred stoneware crock, rear handle, t.t. 3 lines of cautionary transfer 'Murray & Co/ Glasgow' p.m. Very good. (9/10)

E52. J KERSWELL/ ROYAL/ ST THOMAS/ EXETER upright aqua mineral, 9ins tall, large tree t.m. Partial label to rear. 'KILNER BROS MAKERS CONISBORO'. Unusual bobbin shaped stopper with rubber washer. A really great, & rare, patent, made all the better with original label. (9/10)



E53. MINIFIES/ WESTON SUPERMILK/ CREAM AND CREAM CHEESE/ FACTORY. Ornately transferred all white cylinder, 4.75ins tall. 8 lines of writing. Repaired professionally. (7/10)

E49. 'HARDINGS DAIRY/ RICH CREAM/ BITTERNE PARK CREAMERY'. 3.7ins tall, off white body, red brown wide necked top. Some wear to R. (8/10)



E50. 'H MATTHEWS/ MANUFACTURING/ CONFECTIONER/ Plymouth', fruit preserve jar. Heavy aqua glass, 6.8ins tall, heavy rolled lip. Exc (9/10) (GM)



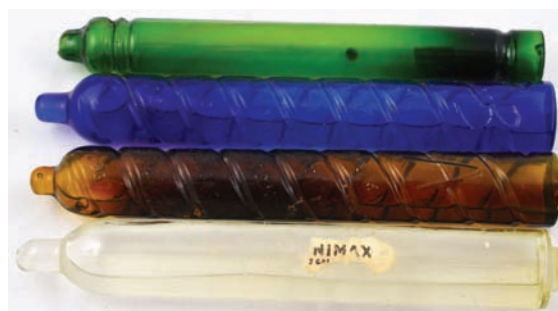
E54. CORNISH MINERALS GROUP. 1. Tywardreath 10oz codd. 2. J FEWINGS/ TAUNTON. 3. D VENNING & SON/ LISKEARD shouldered beer. 4. REDRUTH BREWERY 6oz codd. 5. W & E CARNE. TRURO cylinder. All aqua. (5) (8/10) (GM)



E51. P. PROWSE/ DODBROOK g.b. duo, both std, all white. One carries a heavy crude black transfer, other is horizontal oval bordered variant - greater/ really crisp detail! Some damage. (2) (7/10)



E55. GROUP OF CYLINDER FIRE GRENADES. Largest 8.5ins, 1. Green, unembossed - end off/ empty 2. MINIMAX amber embossed down body, 'A' to end 3. Similar to 2 but cobalt, 'B' embossed to end 4. Clear glass partial label (4) (8/10)





E56. WHITEWAYS/ DEVON CYDER,
large dispenser,
metal handle,
spigot one side.
Good (8/10)

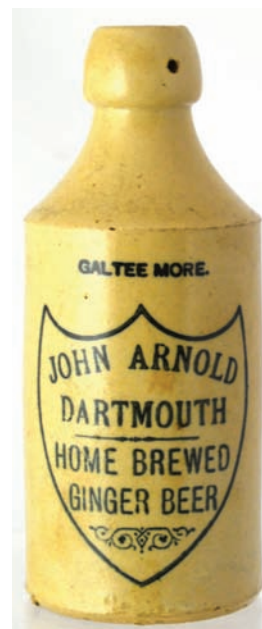
E57. Black glass cylinder wine, c. 1870.
Crude heavy small size, 8.8.ins tall, good
base pontil. Heavy shoulder seal - crown
with 'C' beneath (crest of Baron Clinton,
Devon). Damage to left of side - star
crack (7/10)



E58. JOHN ARNOLD/ DARTMOUTH/ HOME BREWED/ GINGER BEER. St, all white - Galtee More above shield border transfer - patent hole to lip. Very good. (9/10)



E59. G H SKINNER/ EXETER large size dark aqua glass narrow necked hybrid. Scroll entwined letter 'S' t.m. to centre & 'S' near base. To rear in circle - Codd's/ Patent & Within' Barnett & Foster/ Sole/ Agent/ London/ S'. Excellent - nay SUPERB! (10/10)



E60. MUMBY & CO Ltd/ PORTSMOUTH vivid green glass, acid etched soda syphon with large detailed coat of arms 'to HM the King'. Curbed lines to body. Lovely colour. (9/10)

**EXTRA
LOTS
taken
EARLY
at the
show**

BBR AUCTIONS Sunday 30th October 2016 (E.O.C.)
presents the **the Bacco Collection**

The collection
A magnificent & extensive single owner collection featuring many fine original shop cabinets & shop counters, large quantity showcards, enamel signs, mirrors, tins, pipes (every imaginable shape & size), enormous range of tobacco jars (Della Robbia, Staffordshire, Doulton, Horace Elliott Streatham Hill, treen etc), trade catalogues, & very much more (all tobacco related) - right down to an original tobacconists brass shop counter till (an absolute beauty).

The catalogue
Full colour cat. illustrating every lot (E5 UK, overseas £11.49), pdf (E3), plus on thesaleroom.com (2 weeks prior).

Viewing
Full week prior, much already currently on display in BBR's new salesroom.

Bidding
Live on saturday & live on internet, plus absentee & telephone bids

BBR, Elsecar Heritage Centre, Nr Barnsley, S. Yorks., S74 8HJ
t: 01226 745156 e: sales@onlinebbr.com www.onlinebbr.com

Autumn Extravaganza **BBR AUCTIONS**
S74 8HJ Europe's **LARGEST** specialist quarterly event of its type

Saturday 1 Oct 500+ lot Unreserved Auction
Sunday 2 Oct MAJOR cat'd Auc. & BIG Show

120-150+ stalls from all over the UK

Entry access off M1
- Spillholder charter
- NEW displays
- Always fully booked
- Antiques Centre
- £10 FREE draw
- 2 B&B houses
- All under 1 roof
- FREE Parking
- All day catering

Sat 1. 11. Unres'd Auction
Doors 9am-5pm. Unreserved lots - across every collecting field - suitable entries - deliver to Elsecar as soon as possible

Sun 2. cat'd Auc. 11. plus the BIG Show
120-150+ stalls E.E. 8.30am-5.00pm Ord Adm'n 10am-2pm
Auc starts 11am Pot lids, whisky jugs, tees, cures, Advertising, potons, g.b's, salt glaze, black glass. Every Sun lot cat illust'd.

BBR, Elsecar Heritage Centre, Barnsley, S. Yorks., S74 8HJ
t: 01226 745156 email: sales@onlinebbr.com www.onlinebbr.com

next 4 auc. cats £20 pdf £3
Payable to BBR email

Currently accepting single items to entire collections for Oct. & upcoming sales email: sales@onlinebbr.com



BBR Terms & Conditions of sale

CONDITION

ALL ITEMS SOLD AS SEEN - buyers must satisfy themselves of condition - **STRICTLY NO RETURNS**

Many items are of an age/ nature precluding their being in pristine condition. Some catalogue descriptions may refer to damage/ & or restoration. Omission of such does not imply a lot is free from defects, nor does any reference to a particular defect imply the absence of others.

IMPORTANT

No statement in this catalogue shall be deemed a warranty, representation or assumption of liability in respect of date, size, condition, quality, importance or provenance. The ultimate judge, and therefore onus, is with the buyer.

BIDDING

The highest bidder is deemed the purchaser. Advances on each lot determined by the Auctioneer.

BIDDING FOR SOMEONE ELSE?

If you intend to purchase items for another person it is essential you obtain a **SEPARATE bidding number AND PAYMENT DETAILS.**

POSTAL BIDDING

Performed on behalf of absent buyers trying to buy items as cheaply as possible competing with other bids. No charge for this.

POSTAL BID SHEETS

Tied bids - first to arrive secures - this can result in bidding the same price as someone else but **NOT**

securing. It is in your best interest to return forms soon as possible. **If you tel or fax bids through you MUST ALSO post off the bidding form, even though it may arrive after the sale.**

EVERYTHING OFFERED NO RESERVE

PAYMENT

Tel/ postal/ fax & floor bids are a strictly legally binding contract. Purchases must be paid for immediately.

CREDIT CARD PAYMENTS

Not available on sale day as away from BBR office. Postal successes conducted upon return..

POSTAGE

Postal purchasers **MUST** advise how they wish items sending. Full p & p costs borne by purchaser. Following a sale we pack, weigh, & invoice for total amount, inc. p & p.

POSTAL BUYERS

Packing & weighing can take one working week to complete - **please remain patient.**

BBR PACKING

Generally our costs are much less than half competitors - such as Mailbox etc. We try to keep costs low: packing time & materials used. We have extensive experience with all manner of shapes, sizes, & fragility, which may require special boxes! Very bulky or heavy items we suggest carriers rather than Parcel Force. If you have a preferential carrier **please advise when forwarding bids.**

INSURANCE

BBR can insure goods in transit **IF REQUESTED.** **UK PO rates:** 75p up to £150 goods value, £1.35 up to £500 value. **NOT** done unless

specifically requested **at time of bidding.**

The PO does not insure for pottery or glass - only consequential loss

OVERSEAS PURCHASERS

Insuring goods requires declaration of **FULL** value. You decide disadvantages/ advantages regarding customs - & advise - on bidding sheet.

AGENTS In all cases BBR act only as agents between Vendor & Purchaser.

COMMISSION 15% buyers premium on hammer plus VAT.

PRICES REALISED: Email: sales@onlinebbr.com, also downloadable off BBR website: www.onlinebbr.com, OR send a stamped addressed envelope.

HELP US TO HELP YOU! If you spot damage or condition differences we have not **PLEASE INFORM US!**

before bidding by post, or at the sale, it is important to read, fully understand & accept BBR's Terms & Conditions

www.onlinebbr.com

BIDDING INCREMENTS

UP TO £50 rising in bids of £2, £5, £7, £10 etc.

After £50 bids rise in £5 steps. **After £100** bids rise by £10.

After £200 bids rise by £20, £50, £70. **After £500** bids rise in £50 steps. **After £1,000** bids rise in £100 steps

Toward conclusion rises at auctioneers discretion.

Want additional information about any lot?

The last thing we want is anyone to receive something not what they thought. We therefore ask you to tel. for a more specific condition report

Tel., leave lot numbers interested in, call back 5 mins later, when items will be by the phone for AB to describe.