

Sunday 13th September

Chessington Show *Community College*

KT9 2JS

BBR 'on the road' Entirely Unreserved Auction

Comm. 15% on hammer - immediate payment taken - we bring items to you.

Kicked off 'noon 'ish' take approx 40 mins.



S1. H D RAWLINGS/ BRIGHTON/ SELTZER. 5.5ins tall, pictorial spread winged eagle above 'trade mark'. Bluey tinged green. Tiny base flake.

Provenance stickers

BBR is currently dispersing several collections - these carry provenance initials:

NL = Norman Lewis

KB= Kevin Boyle

CM= Chris Mortimer

GM= Garth Morrison

MH= Michael Harris

AB= Alan Blakeman

BBR's 2016

'On the Rd' auctions
FREE pdf's - pre-order
from BBR's website:
www.onlinebbr.com

Results FREE after on BBR's website

S2. F & H E HORNBY/ MODEL DAIRIES/ RICHMOND/ KEW & ST MARGARETS'. 3ins tall, dark red brown top, lower cream, black transfer. Very good.



S3. PAIR LONDON PICTORIAL HAMILTONS. Both lrg size, aqua glass:
1. Barrett & Co (lrg Barrett 'patent' pict).
2. H D Rawlings (eagle t.m.) (2) Good.

CONDITION

Before bidding please ensure items meet your condition requirements -

INSPECT!

On sale day **ALL** items sold **AS SEEN**
NO RETURNS

Tried • Tested • Trusted
www.onlinebbr.com
**more sales...
more often**



S4. LUPTON sealed black glass cylinder wine. 11ins tall, three part mould. Devonshire Buller family. Ex john Harvey Bristol Wine Museum. base pontil. Exc/ A1. (CM)

S5. STAINES ACID ETCHED soda syphon. Delightful, rearing lion pict. 'A. Harwood/ Staines'. Plus an unusual blanked out acid etched rear - H rawson? Good.



S6. WARNERS/ SAFE/ CURE/ LONDON. 7.5ins tall, dark brown glass. Familiar lrg safe pict. High shouldered variant. Exc/ A1.



S7. JOHN GOSNELL multicoloured pot lid & base. Lrg central pictorial (young Queen Victoria). **Blue green** overall example. A few bottom edge flakes.



ABSENTEE BIDS
Absentee bids to be with
BBR no later than
Thursday prior or email:
sales@onlinebbr.com



S8. SILICATED CARBON/ ASCENSION FILTER. 3.25ins tall, circular **all white** ceramic covered all over with **black** transfer - includes diamond registry mark. (GM)

S9. BRIGHTON dumpy aqua Reliance Patent codd. 7.7ins tall, aqua glass. heavily embossed 'H.T. HARRIS' etc across the front & Rylands makers to rear. very good. (GM)

S10. SPRIGGED TOBACCO JAR, with lid. 6ins tall, t.t, knop lid. Various sprigs all round, & floral lid embellishments. Very good.



S11. EYE BATHS GROUP. 5 stemmed - **black, blue, amber, milk glass, clear, plus small green.** Very good. (6) (NL)



S12. JOHN HARE'S/ HENLOW/ BEDS flour bags. 5 'Stone ground', **red** print. 5 'DISTASTE FLOUR', **red** on cream. 5 'MALT "BROWNBREAD" FLOUR', **brown** print. Good. (15)



S13. HARDENS/ HAND/ FIRE/ EXTINGUISHER embossed in front panel, to rear panel patented date (Aug 8 1871) etc. Square faceted form, 4 pronounced feet, long neck. Turquoise blue. Good. Exc



S14. ADVERTISING PAPERWEIGHTS. 4.2 by 2.8ins, faceted aqua glass rectangular form. Detailed etched lettering to rear.
1. J & J Goddard...Pianos
2. Crawford & Sons/ Blg Materials. Good. (2)



S15. WRIGHTS DAIRY/ SUPPLIED CHEYNE HOSPITAL plus testament, address, returns policy. Black transfer on cream coloured bodies. Good (2)



S16. AVAN HOBOKEN/ ROTTERDAM sealed gin. 11ins tall, black glass, typical square tapering form, pig snout. Embossed to opposing sides, shoulder seal 'AVH'. Very Good. (CM)



S17. MERMAN ROCKINGAHM GLAZED GIN FLASK. Shiny brown glaze, 7ins long. Detailed anthropomorphic ergonomic shaped flask c.1860's. Very good. (DD)



S18. WARNERS SAFE CURE/ LONDON.
Classic half pint with familiar large safe pictorial green glass example. Stands up but extraordinarily fire (?) misshapen? (AB)

S19. HANDYSIDES/ BLOOD PURIFIER.

Heavy square panelled, long necked, black glass form, 11.2ins tall. Typically crude. Very good. (AB)



S23. MINEHEAD HUMOROUS BLACK BOY IN BATH! Ceramic bath with young lad peering over side & a somewhat non p.c. cryptic comment! Minehead coat of arms. Shelley china.



S24. KLEGTORINE CURE BOTTLE BOXES. Original black & red printed cardboard boxes, unused. Minor ageing, overall very good. (40)



S20. TRINITY COLLEGE

(Cambridge) sealed black glass cylinder wine, 11.7ins tall, three part mould. Very low body seal 'TC/ CR'. (CM)



S21. SPRIGGED SHAVING MUG. 5.4ins tall, t.t., salt glaze tapering handled mug adorned with atypical sprigs plus wheeled decoration. Doulton quality? Very good.

S22. PRICES PATENT CANDLE CO cobalt blue glass wedge - classic UK medicine. 7.5ins tall, five well struck lines of embossing plus diamond registration at bottom. Very good.

POSTAL (or email) BIDS

Should reach BBR no later than Thursday prior - email/ tel to double check



S25. PALMERS STORES/ SPECIAL/ CORNISH CREAM. Unusual squat fat cream pot, 3ins tall, all tan, black transfer to front. Very good.

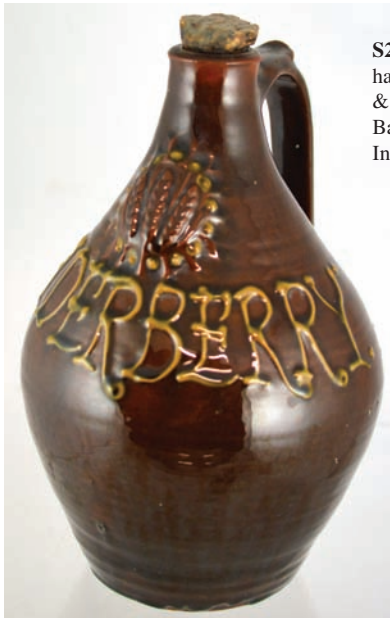
S26. LONDON PURE MILK ASSOC'N .../ PURITY/ BRANCHES THROUGHOUT

LONDON cream pot. Property/ owner claim to rear. 4.5ins tall, wide necked cylinder shape. Very good.



FULL RESULTS

will be posted to BBR website (Mon/ Tues) after, also on all forums, or simply email AB for the pdf



S27. ELDERBERRY flagon, rear handle. 9.5ins tall, piped cream lettering & cartouche on shiny brown ground. Base inscribed 'D MANN/ 1960'. Interesting Art Pottery piece. (JR)



S28. ISLE OF WIGHT HYBRID. Large size, aqua glass. To front 'THIS BOTTLE IS/ THE PROPERTY OF/ RANDALL & CO/ RYDE I.W.'. Initials & t.m. to rear & a number '4'. Very good.

S29. COBALT BLUE ROLLING PIN. 14ins long, deep cobalt blue glass. Decorative knobs to each end. Very good/ exc.



S30. COFFEE POT. 8.5ins tall, salt glaze. Delightful detailed (top quality) sprigs & wheeled decoration to front & rear. Very good. (GM)



S31. ELABORATELY INITIALED SEALED WINE. Black glass, 11.5ins tall, 3 piece mould, high kick up, double collar lip. Unusual script monogram seal. (CM)



S32. TRIO OF HEAVY CLEAR GLASS PAPERWEIGHTS. Two circular, one rectangular. Advertising: 'J H Sankey & Co', 'G Giles Overmantels Sideboards, Looking Glasses' etc. Plus 'W & J R Hunter 3 ply wood...floorings'. Good. (3)



S33. PONTILLED COLOURED GLASS BOTTLES. All approx. 3.8ins tall. Body colours vary from a deep brown to light greeny amber hues. Four have aqua lips. All feature prominent base pontils. (6) (AB)



S34. F & HE HORNBY MODEL DAIRIES RICHMOND. Elaborately transferred t.t. cream - 9 lines of writing plus gold medals pictured. Very crisply struck. Very good.

S35. SAVAGES CELEBRATED PERUVIAN BALM pot lid & base. Strong black transfer with large central pict. of bunch of flowers. Very good. (NL)



S36. SMALL BOOK FLASK. 4.2ins tall, light salt glaze. Delightful example featuring raised & imp'd detailing. Minor imperfections/ flaws. Superb. Generally very good. (DD)



S37. J MILLS & SONS beehive topped hamiltons. Lrg & sml, aqua glass. One 'London S E' address, other 'Osbourne Rd SE'. Some wear. (2) (GM)

S38. WARNERS/SAFE CURE/ LONDON. Pint size classic cure with lrg Safe pictorial to centre. Very good.



S42. SCHWEPES SODA SYPHON. Very slightly darker than previous lot, original chromed metal top. Detailed acid etching with large coat of arms to centre. Original shoulder paper label. Very good.



S43. SCHWEPES SODA SYPHON. Mid golden amber, original chromed metal top. Detailed acid etching with large coat of arms to centre. Very good.



S39. KING & BARNES/ HORSHAM soda syphon. Pink glass, vertical ribbing, lrg acid etched front design inc. initials, original metal top. Minor front body ding otherwise good. (GM)



S44. SNUFF TAKER BARREL. 8ins tall, t.t., salt glaze, curved barrel shape 2 raised rings above & below a cut out snuff taker sprig. Wide top opening. Very good. (GM)



S40. SPRIGGED SPIRIT BARREL. One gallon capacity dark brown salt glazed barrel. Fabulously detailed coat of arms to front, Knight on horseback & lion sprigs other side. A few chips - great looker!

S41. SCHWEPES SODA SYPHON. Very pale amber glass, original chromed metal top. Detailed acid etching with large coat of arms to centre. Very good.



S45. ROCK BLUE g.b. bottle shaped kitchenalia item. Very strong black transfer ('7 Gold Medals 1900' type). Lower hairline - may bleach. (AB)

**POSTAL
(or email) BIDS**
Should reach BBR no later than Thursday prior - email/ tel to double check

S46. BRIGHTON INTERNAL SCREW HAMILTON. Small size, aqua. 'Mills & Co' bird pictorial. Extremely rare. Exc/ A1 (GM)

FULL RESULTS
will be posted to BBR website (Mon/ Tues) after, also on all forums, or simply email AB for the pdf





S47. PAIR SURREY GINGER BEERS. Both ch, c.c. type. 1. t.t. 'Purnell & Co/ Guildford' 2. All tan 'WR Butler & Sons// Dorking'. Both very good.



S50. BRIGHTON SCALE PLATE. Circular white glazed ceramic scale plate with prominent black transfer to centre 'S Banfield/ Brighton/ Horsham/ Eastbourne/ Worthing/ Hastings. Very good.



S48. FARRIMOND'S F.B. cone topped beer can. Scarce early beer container. Some wear, generally very good. (AB)



S49. 1897 JUBILEE blue top blue transferred g.b. Ch, striking blue top half with verbose diamond shaped transfer. A good number of these were found but the vast majority were chipped and cracked - this is a very rare mint example. (AB)



S50. CODDS PATENT 4 early narrow neck codd with square bottom corners! 'Best Codd's' & entwined initials to rear. Base embossed 'Barnett & Foster/ Sole Agents' around outer, 'Forston/ London' to centre. An extremely rare offering indeed to round off the fabulous Surrey Show!

CONDITION REPORTS

Absentee bidders can tel: **01226 745156**

or email: **sales@onlinebbr.com**

FUTURE AUCTION ENTRIES

Single quality items or complete collections can be consigned any time. If needed BBR can collect, or accept, at any UK Show.

Please tel to discuss: **01226 745156**

or email: **sales@onlinebbr.com**

BBR Terms & Conditions of sale

CONDITION ALL ITEMS SOLD AS SEEN - buyers must satisfy themselves of condition - **STRICTLY NO RETURNS**

Many items are of an age/
nature precluding their
being in pristine condition.
Some catalogue
descriptions may refer to
damage/ & or restoration.
Omission of such does not
imply a lot is free from
defects, nor does any
reference to a particular
defect imply the absence of
others.

IMPORTANT
No statement in this
catalogue shall be deemed a
warranty, representation or
assumption of liability in
respect of date, size,
condition, quality,
importance or provenance.
The ultimate judge, and
therefore onus, is with the
buyer.

BIDDING
The highest bidder is deemed
the purchaser. Advances on
each lot determined by the
Auctioneer.

**BIDDING FOR SOMEONE
ELSE?**
If you intend to purchase
items for another person it
is essential you obtain a
**SEPARATE bidding number
AND PAYMENT DETAILS.**

POSTAL BIDDING
Performed on behalf of absent
buyers trying to buy items as
cheaply as possible competing
with other bids. No charge for
this.

POSTAL BID SHEETS
Tied bids - first to arrive
secures - this can result in
bidding the same price as
someone else but **NOT**

securing. It is in your best
interest to return forms soon
as possible. **If you tel or fax
bids through you MUST
ALSO post off the bidding
form, even though it may
arrive after the sale.**

EVERYTHING OFFERED NO RESERVE

PAYMENT
Tel/ postal/ fax & floor bids
are a strictly legally binding
contract. Purchases must be
paid for immediately.

CREDIT CARD PAYMENTS
Not available on sale day as
away from BBR office. Postal
successes conducted upon
return..

POSTAGE
Postal purchasers **MUST**
advise how they wish items
sending. Full p & p costs
borne by purchaser. Following
a sale we pack, weigh, &
invoice for total amount, inc. p
& p.

POSTAL BUYERS
Packing & weighing can take
one working week to
complete - **please remain
patient.**

BBR PACKING
**Generally our costs are
much less than half
competitors - such as
Mailbox etc.** We try to keep
costs low: packing time &
materials used. We have
extensive experience with all
manner of shapes, sizes, &
fragility, which may require
special boxes! Very bulky or
heavy items we suggest
carriers rather than Parcel
Force. If you have a
preferential carrier **please
advise when forwarding
bids.**

INSURANCE
BBR can insure goods in
transit **IF REQUESTED.**
UK PO rates: 75p up to £150
goods value, £1.35 up to
£500 value. **NOT** done unless

specifically requested **at time of bidding.**
**The PO does not insure for pottery or glass -
only consequential loss**

OVERSEAS PURCHASERS
Insuring goods requires declaration of **FULL** value.
You decide disadvantages/ advantages regarding
customs - & advise - on bidding sheet.

AGENTS In all cases BBR act only as agents
between Vendor & Purchaser.

COMMISSION 15% buyers premium on hammer
plus VAT.

PRICES REALISED: Email: sales@onlinebbr.com,
also downloadable off BBR website:
www.onlinebbr.com, OR send a stamped addressed
envelope.

HELP US TO HELP YOU! If you spot damage or
condition differences we have not **PLEASE INFORM
US!**

**before bidding by post, or at the
sale, it is important to read, fully
understand & accept BBR's Terms
& Conditions**

www.onlinebbr.com

BIDDING INCREMENTS

UP TO £50 rising in bids of £2, £5, £7, £10 etc.

After £50 bids rise in £5 steps. **After £100** bids rise by £10.

After £200 bids rise by £20, £50, £70. **After £500** bids rise
in £50 steps. **After £1,000** bids rise in £100 steps

Toward conclusion rises at auctioneers discretion.

**Want additional information
about any lot?**

**The last thing we want is anyone
to receive something not what
they thought. We therefore ask
you to tel. for a more specific
condition report**

**Tel., leave lot numbers interested in,
call back 5 mins later, when items will
be by the phone for AB to describe.**

