

BBR's 2015 WinterNational w/e



Saturday 31 Jan

500+ lot Unreserved Auction

Sunday 1 Feb

Major Show & Auction



Antique Bottles, Pot Lids & Advertising

Ginger beers Tins Poisons Old cabinets Pub Jugs Salt Glaze Pot lids Minerals Pharmacy Inks
Stoneware Black glass Whisky jugs Kitchenalia Early Doulton Cream pots Guinness Enamel signs

BBR's WinterNational w/e



Saturday 31 January

Unreserved Auction, Blg 21

Sunday 1 February

BIG Show & Auction, Blg 21



SATURDAY Auction, Blg 21 Doors open 9am Sale 11am

SUNDAY Show & Auction Blg 21 E.E. 8.30am Auction viewing 9am Sale 11am

Postal, tel. & fax bidding facility. Low cost after sale p & p worldwide

Buyers premium 15%, plus vat - only on premium

Sunday auction held beside BBR's WinterNational for which there is an admission charge

FREE PARKING

ACCOMMODATION: see list to rear of catalogue, or email BBR

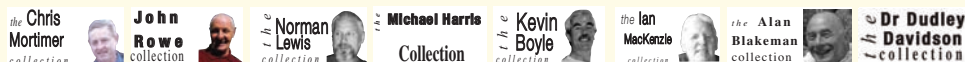
Viewing stops 10 mins. before sale start (11am)

All items sold 'as seen' on day. Everyone must view & inspect goods before & accept BBR's Terms & Conditions (see rear of cat). Sunday bidders must register & obtain a bidding number
Payment & collection can take place throughout/ during any of our sales.

Collector provenance stickers BBR is selling a number of collections with 'provenance'

sticker. Bracketted initials denote who from: CM = Chris Mortimer JR = John Rowe NL = Norman Lewis

KB = Kevin Boyle IM = Ian McKenzie AB = Alan Blakeman DD = Dr Dudley Davidson



Catalogue prepared by Frank Burgin, Clare Bell & Alan Blakeman

BBR, Elsecar Heritage Centre, Nr Barnsley, S Yorks., S74 8HJ tel: 01226 745156

www.onlinebbr.com email: sales@onlinebbr.com fax: 01226 361561



Bears Grease pot lids

1. THE OUTS POT LID (KM16)

3.25ins diam, multi-coloured pot lid produced by the Pratt Factory. Fancy ribbon border version. Scarce large size. Very good. NR £120-

150+.



2. THE OUTS POT LID (KM 16)

3ins diam, multi-coloured pot lid produced by the Pratt Factory. Double line border variant. Very good. NR £120-150+.

3. POLAR BEARS POT LID (KM 18)

3ins diam, coloured pot lid, printed in blue & green without moon pictured. Good. NR £80-120+.



4. BEAR LION AND COCK POT LID (KM 19)

3ins diam, multicoloured pot lid, produced by the Pratt Factory, without title and dot border. Good. NR £30-40+.



5. SHOOTING BEARS POT LID (KM 13)

3ins diam, multicoloured pot lid, produced by the Pratt Factory. Very good. NR £30-40+.



6. GENUINE RUSSIAN BEARS GREASE POT LID.

2.75ins diam, blue transfer 'GENUINE RUSSIAN BEARS GREASE FOR INCREASING THE GROWTH OF HAIR', 2 bears pictured. Chips to bottom flange, glaze flaw & surface scratch. NR £60-80+. (NL)



7. GENUINE RUSSIAN BEARS GREASE POT LID.

2.5ins diam, 'GENUINE RUSSIAN BEARS GREASE/ FOR INCREASING/ THE GROWTH OF HAIR'. 2 bears pictured. Small chip to bottom flange. NR £60-80+.



SALE DAY FLOOR BIDDERS

All items sold **AS SEEN**. Bidders must ensure lot/s meet personal condition standards.



8. BEARS GREASE POT LID. 2.75ins diam, 'HIGHLY PERFUMED BEARS GREASE/ FOR BEAUTIFYING & STRENGTHENING THE HAIR' 2 bears pictured. Chip to flange & some restoration. NR £40-60+.



9. BEARS GREASE POT LID. 2.75ins diam, blue transfer 'GENUINE/ BEARS GREASE/ IMPORTED BY/ JOHN GOSNELL & CO/ SUCCESSORS TO PRICE & GOSNELL/ LONDON AND PARIS'. Standing bear pictured. Good. NR £80-100+.



10. BEARS GREASE POT LID & BASE.

2.75ins diam, blue transfer to lid & base 'VERITABLE GRAISSE D'OURS/ E. COUDRAY/ PARIS' bear in forest pictured to lid. Bears with forest background to base. NR £120-150+.



11. GLASS PAPERWEIGHT. 4.5ins diam, clear glass with black & white picture, same image as pot lid (KM 3) 'CLAYTON & COS REAL BEARS GREASE 58 WATLING ST LONDON'. Good. NR £30-40+.

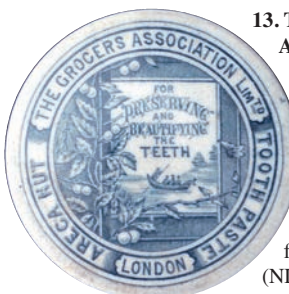


Toothpaste pot lids

12. GOSNELL BROS COLD CREAM POT LID. 2.5ins diam, 'GOSNELL BROS & CO/ CREAM LONDON'. A very rare pot lid indeed. Very good. NR £40-60+ (GM)



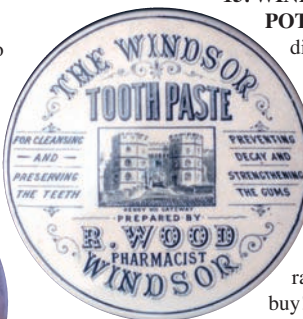
13. THE GROCERS ASSOCIATION TOOTH PASTE POT LID. 3.5ins diam, 'THE GROCERS ASSOCIATION LIMTD ARECA NUT TOOTH PASTE LONDON'. Chips & flakes to bottom flange. (NL) £40-60+



14. LORIMER & CO TOOTHPASTE POT LID & BASE. 4.25ins diam, 'CHERRY TOOTHPASTE/ LORIMER & CO MANUFACTURING PERFUMERS LONDON & NEW YORK'. Large image of cherries & arm holding globe t.m. flange/ top edge chip. A rare very large size lid - most impressive. NR £80-120+ (NL)



15. WINDSOR TOOTHPASTE POT LID & BASE. 3.25ins diam, 'THE WINDSOR/ TOOTHPASTE/ PREPARED BY/ R. WOOD PHARMACIST/ WINDSOR'. 'Henry VIII Gateway' pictured. Some restoration but still a rare offering - there to buy! NR £80-100+.



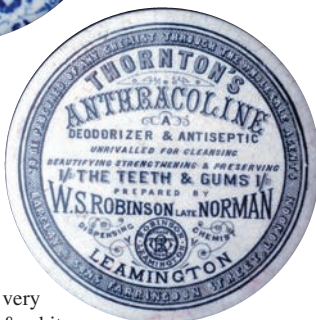
TERMS & CONDITIONS are printed to catalogue rear. All bids accepted on the understanding these have been read & accepted



16. SWINTONS TOOTHPASTE POT LID. 2.75ins diam, **blue** transfer 'SWINTONS/ ENGLISH PRIMROSE 1/- TOOTHPASTE/ LONDON'. Good. NR £60-80+. (NL)

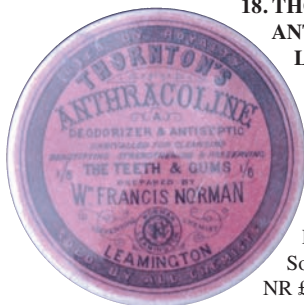
17. THORNTONS ANTHRACOLINE POT LID.

3.25ins diam, 'THORNTONS/ ANTHRACOLINE/ W.S. ROBINSON LATE NORMAN/ LEAMINGTON'. A very rare (unique?) black & white variant to a well known lid)? Good. NR £60-80+.



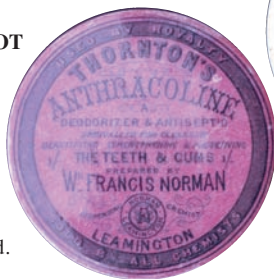
18. THORNTONS ANTHRACOLINE POT LID.

3.75ins diam, **black** transfer on **pink** background, 'THORNTONS ANTHRACOLINE/ PREPARED... WM FRANCIS NORMAN LEAMINGTON'. Some flange restoration? NR £60-80+.



19. THORNTONS ANTHRACOLINE POT LID.

3.25ins diam, **black** transfer on **pink** background 'THORNTONS ANTHRACOLINE/ PREPARED BY/ WM FRANCIS NORMAN LEAMINGTON'. Good. NR £60-80+.



CONDITION - help us to help you!

If you spot condition differences/ faults/ repairs we haven't please advise BBR staff. We always announce such amendments prior to a sale.

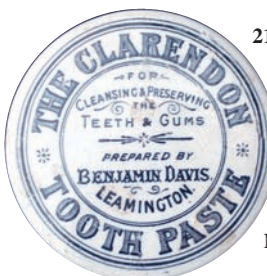
20. TOOTH NERVE DESTROYER MINIATURE POT LID.

1 inch diam - yes! 'DE COURCY'S/ TOOTH-NERVE/ DESTROYER'. Extremely rare diddy lid. Glaze loss/ dull. NR £?



21. LEAMINGTON TOOTHPASTE POT LID.

2.75ins diam, 'THE CLARENDON TOOTHPASTE... BENJAMIN DAVIS/ LEAMINGTON' chip to bottom flange. NR £30-40+.



22. DENSANTE SQUARE POT LID.

2.75ins square, 'DENSANTE/ FOR THE TEETH/ PREPARED BY/ MESSRS MATLAND/ DENTAL SURGEONS/ 114 & 115 HOLBORN/ LONDON E.C.' set of teeth pictured. Some restoration. NR £60-80+. (NL)



Other lids

23. IMPERIAL HOTEL POT LID & BASE.

2.75ins diam, **green** transfer 'IMPERIAL HOTEL/ TURKISH BATHS/ HAIRDRESSING DEPT/ RUSSEL SQ LONDON'. Some restoration? NR £60-80+. (NL)



24. ESAULINE OR POMADE POT LID & BASE.

2.25ins diam, 'KNOWLES "ESAVLINE, OR POMADE D'ESAV"/ "I USED IT"/ REGISTERED' gent with long moustache pictured. Some restoration. NR £40-60+. (NL)





25. POT LID & BASE. 2ins diam, hunter aiming rifle pictured, Port Merion Potterytype. 'Made in England' printed to base. Very good. NR £40-60+.



POSTAL BIDDERS ...

must satisfy themselves lot/ s meet their condition standards. For a more detailed inspection/ personal assessment please tel. BBR to speak with AB.

Hamiltons

26. EMBOSSED PONTILLED BLACK GLASS HAMILTON. 7ins long, **very dark olive green**, pontil scarred base, embossed 'HAMILTON'S/ PATENT AERATED WATERS & CO' to one side 'SOLD BY R JOHNSON 15 GREEK ST SOHO/ LONDON'. An exceptional & important offering. Very good. NR £2,500-3,000+. (AB)





**27. STONEWARE
HAMILTON BOTTLE.** 7ins
long, **brown** glazed hamilton
imp'd 'DOUBLE SODA
WATER/

MANUFACTURED/ BY
BIRD & CRANK LORD
STREET.' *Researched by
Dennis Northmore -
traced to a Liverpool
company in business
between 1832-49. To
rear an indistinctly
struck Codnor
Park pottery
mark. Pottery
closed in
1832 dating
the bottle
up to that
year. Very
good. NR
£600-800+.
(DN)*



**29. STONEWARE
HAMILTON BOTTLE.** 8ins
long, **grey/ green** glaze. Very
good. NR £100-
150+. (DN)



**30. RED/ AMBER LIP
HAMILTON BOTTLE.**
9ins long, aqua glass with
red/ amber lip, embossed 'J
TRENTHAM & SON/
PATENT SYPHON WORKS/
GREAT BRIDGE' (West Brom
area). Soda syphon pict.
t.m. Very good. NR
£300-400+. (GM)



**31. EARLY CODD/
HAMILTON HYBRID
BOTTLE.** 9.5ins long, aqua
glass **narrow neck.** Embossed
'HUMPHREY WOOD/
HUDDERSFIELD' to front
'CODDS PATENT LONDON/
6/ BARNETTE & FOSTER...
LONDON' to rear. Good. NR
£60-80+. (GM)



**28. STONEWARE
HAMILTON
BOTTLE.** 7.75ins
long, **brown** glazed
hamilton imp'd
'B.S.WM/ EX'
c.1823-34. Very
good. NR £300-
400+. (DN)

31A. NEWCASTLE COBALT HAMILTON BOTTLE. 9.25ins
long, **cobalt blue** glass hamilton embossed 'GILPIN & CO... 137
PILGRIM STREET/ NEWCASTLE ON
TYNE'. Very good. NR £300-
350+. (MH)





31B. HAMILTON STAND. 4ins tall, silver plated hamilton bottle stand. Bit of a 'tilt' but overall very good. NR £30-40+. (MH)



32

33

38

Minerals & patents

32. ST IVES COBALT BLUE CODD BOTTLE.
7.5ins tall, deep cobalt blue glass embossed vertically 'J. WADSWORTH/ ST IVES/ HUNTS' to front 'THE RYLANDS/ 4/ BARNSLEY' & entwined initials to rear. 'LEMON' to shoulder. Extremely rare. Some minor body scuffs/ nibbles but overall original sheen - as dug! £2,000-3,000+



CONDITION - help us to help you!

If you spot condition differences/ faults/ repairs which we have not please advise BBR staff. As always we will announce such amendments prior to the sale.

SALE DAY FLOOR BIDDERS

All lots sold **AS SEEN**. Bidders must ensure items meet personal condition standards.



33. ST IVES BLUE CODD BOTTLE. 7.5ins tall, **turquoise blue** glass (distinctly different hue to the previous lot. Embossed vertically 'J. WADSWORTH/ ST IVES/ HUNTS' to front 'THE RYLANDS/ 4/ BARNSLEY' & entwined initials to rear 'LEMON' to shoulder. Minor body dullness & a few scuffs - as previous dug/ uncleaned/ not polished. £2,000-3,000+



34. CONNORS PATENT CODD BOTTLE. 9.25ins tall, aqua glass bulbous neck - patented pear shaped stopper. & unusual neck shaping. Embossed 'SPENCER CONNOR & CO/ MANCHESTER' to front 'CONNORS PATENT/ STOPPERS/ REDFEARN BROS/ BOTTLE MAKERS/ BARNSLEY' to rear. This is by far the rarest of all the Connors variants. Very good. NR £300-400+. (GM)





35. LANDPORT AMBER GLASS CODD BOTTLE. 9ins tall, **golden amber** glass, Dobson 4 way patent. Embossed 'WEBB & SALMON/ LANDPORT' to front. 'DAN RYLANDS LD/ MAKERS/ BARNESLEY' to rear. An exceptionally rare Hants coloured mineral. Overall good. NR £300-400+. (GM)



36. LIVERPOOL EARLY LIVERPOOL CODD BOTTLE. 7.5ins tall, aqua glass narrow neck, flat base. Embossed 'G. CORNETT/ LIVERPOOL' & large animals head t.m. to front. 'CODDS PATENT/ 4/ BARNETT & FOSTER LONDON' to rear. An exceptionally fine condition, square based early narrow neck pictorial. Good. NR £80-120+.



37. STAINES SYKES MACVAY PATENT BOTTLE. 9ins tall, aqua glass cylindrical shaped bottle, six circular indents around base, bottle lip with metal insert embossed 'TAYLOR & CO STAINES' mermaid pictorial to front. 'SYKES MACVAY/ PATENT 1877/ CASTLEFORD' to rear & makers around base. Very good. NR £80-120+.



38. ST IVES AMBER GLASS CODD BOTTLE. 7.5ins tall, **amber** glass standard codd bottle embossed vertically 'J. WADSWORTH/ ST IVES/ HUNTS' to front 'ALEXANDER & CO/ LEEDS &/ LONDON' to rear entwined initials, 'SODA' to side of neck. Some body dullness & a scuff mark. Very rare, not cleaned/ polished. NR £200-300+.



39. BLACKBURN SUTCLIFFES PATENT BOTTLE. 8.75ins tall, aqua glass with double ended glass stopper embossed 'R. MERCERS/ AERATED WATERS... BLACKBURN'. Crown t.m. to rear 'SUTCLIFFES PATENT BARNESLEY' around base.



Extremely rare. Very good. NR £200-300+. (GM)



40. BILLOWS PATENT BOTTLE. 9ins tall, aqua glass flat sided codd type bottle, horizontal retaining lug near base embossed 'B/ HYGENIC/ REGISTERED'. Minor internal haze though generally very good. NR £60-80+. (GM)

Soda syphons



41. MINIATURE SODA SYPHON. 7ins tall, to top of pewter tap, **pink glass** acid etched 'WARD & SONS/ SWINTON'. Very good. NR £60-80+.



42. MINIATURE SODA SYPHON. 6.5ins tall to top of metal stopper, clear glass, acid etched 'SCHWEPPE'S LIMITED PORCELAIN LINED'. Very good. NR £30-40+. (GM)

43. STRATFORD ON AVON SODA SYPHON. 13.5ins tall to top of chrome metal tap, **pink glass**, acid etched 'PRIZED MEDAL/ MINERAL WATERS/ REDDITCH AND/ STRATFORD ON AVON' to one side 'SMITH & SPENCE LIMITED' to other. Very good. NR £30-40+. (GM)

44. LONDON SODA SYPHON. 12.75ins tall to top of chrome metal tap. **Pale blue** glass acid etched 'VICTORIA WINE COMPANY LTD LONDON'. Very good. NR £30-40+. (GM)



45. KENDAL SODA SYPHON. 12.75ins tall, to top of chrome metal tap. **Pink glass** acid etched 'JONAS ALEXANDRA & SONS/ AVENUE WORKS KENDAL'. Very good. NR £30-40+. (GM)



46. CASTLEFORD SODA SYPHON. 9.75ins tall, no tap, **amber glass**, acid etched 'MORRISON & TOWN ENDS HIGH CLASS MINERAL WATERS/ CASTLEFORD'. Brilliant pictorial/ novel idea. Very good. NR £30-40+.



Ginger beers

47. NORTH SHIELDS HOP BITTER BEER BOTTLE. 8ins tall, **tan lip**, **black** transfer 'W.A. WILKINSON NORTH SHIELDS/ HOP/ BITTER BEER NON-TOXICATING/ KING STREET HALL'. Very good. NR £200-300+. (KB)



48. KIRKCALDY GINGER BEER BOTTLE. 6.5ins tall, st. t.t. **black** transfer 'LEISHMAN'S BREWERY KIRKCALDY'. Rampant lion pict. t.m. Left shoulders flake. NR £60-80+. (IM)

EMAILS BIDS

to: sales@onlinebbr.com + full name, address & c. c. details, or fax: 01226361561. **YOU MUST ALSO POST BID SHEET - EVEN IF ARRIVING AFTER SALE**



49. GLASGOW GINGER BEER BOTTLE. 7.75ins tall, st. green top, green transfer 'JOHN MACKAY & CO/ CELEBRATED/ FERMENTED/ GINGER/ BEER/ GLASGOW'. Caledonian p.m. Still quite scarce. Very good. NR £60-80+. (IM)

50. THE RHYL MINERAL WATER CO GINGER BEER BOTTLE.

6.5ins tall, st. all tan glaze, black transfer '... RHYL

MINERAL

WATER CO... WINDSOR ST' cricket bat & stumps pict. t.m. Stiff Lambeth p.m. Very good.

Not often seen so good. NR £30-40+.



51. ACCRINGTON GINGER BEER BOTTLE. 8.5ins tall, ch. t.t. s.s. black transfer 'S. STOCKS OLD ORIGINAL STONE GINGER BEER/ PEEL PARK WORKS/ ACCRINGTON' flowers pictorial t.m. Rear lip restoration. NR £20-30+.

52. STIRLING GINGER BEER BOTTLE. 8ins tall, ch. t.t.

transferred 'McCALLUM & COS... ESTABLISHED 1840/ STIRLING' boars head pict. t.m. Buchan p.m. Fabulous sharp Buchan transfer. Very good. NR £30-40+. (IM)



53. CARLISLE GINGER BEER BOTTLE. 8ins tall, ch. t.t. black transfer 'UNDERWOODS/ BREWED GINGER BEER/ CARLISLE' factory premises pict. t.m. Minute thin base flake to rear. NR £60-80+.



54. PERTH STOUT BOTTLE. 8.5ins tall, ch. t.t. transferred 'ALEXR/ DIGWALL/ SOLE AGENT FOR RAGGETTS/ LONDON/ NOURISHING STOUT/ PERTH'. Port Dundas. Lip "flaws", still a lovely looker - of some rarity! NR £40-60+. (IM)



55. SUNDERLAND... GINGER BEER BOTTLE.

8ins tall, ch. t.t. black transfer 'R. POWLEY & SONS... SUNDERLAND/ AND/ WILLINGTON 1/2D DEPOSIT ON THIS BOTTLE'. Monument brand pict. t.m. Buchan p.m. Very good. NR £60-80+.



56. GLASGOW GINGER BEER BOTTLE. 7.75ins tall, st. green top, green transfer 'G & C. MOORE SPRINGFIELD BOTTLING STORES/ BRIDGETON GLASGOW'. Rear base chip & hairline but the sharpest, crispest, transfer on one of these I've ever seen? NR £60-80+. (IM)





57. KIRKCALDY GINGER BEER? BOTTLE. 9ins tall, ch. all white, blue imp'd lettering 'JOHN C. LINDSAY/ FAMILY GROCER/ BACK STREET PATHHEAD KIRKCALDY' with original imp'd stone stopper. Buchan p.m. Very good. NR £40-60+.

58. LESLIE GINGER BEER BOTTLE. 8.25ins tall, ch. t.t. transferred 'ARCHIBALD'S/ BREWED GINGER BEER/ LESLIE'. Buchan p.m. Tiny rear base flake. NR £40-60+. (IM)



59. OLD JUG LAGER. 8.75ins tall, ch. t.t. very strong black transfer 'MOERLEINS/ OLD/ JUG LAGER/ KRUG BIER' cherubs, hops & vines etc. pictured. Pinhead lip flake. NR £30-40+.



60. OLD JUG LAGER. 8.5ins tall, ch. t.t. black pict. transfer 'THE MOERLEIN-GREAT/ BREWING CO/ "OLD JUG LAGER"/ ULTES KRUG/ BIER' cherubs, wheat sheaf, hops & vines etc. pictured. Really fabulous transfer detailing. Very good. NR £60-80+.



61. DUNFERMLINE STOUT BOTTLE. 9ins tall, ch. all white, transferred 'BRUCE & GLEN NOURISHING/ STOUT/ DUNFERMLINE'. Buchan p.m. Very good. NR £30-40+. (IM)



62. ABERDEEN GINGER BEER BOTTLE. 9ins tall, ch. t.t. blue transfer. 'JAMES ALEXANDER STONE GINGER BEER/ FORBES STREET/ ABERDEEN'. Buchan p.m. Very good. NR £30-40+. (IM)



63. EDINBURGH GINGER BEER BOTTLE.

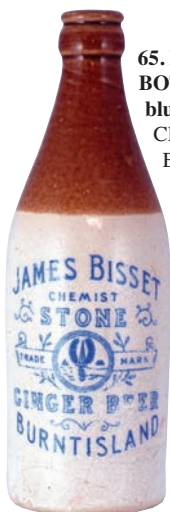
8.75ins tall, ch. t.t. transferred. 'A.S. McONIE/ BREWED GINGER BEER/ EDINBURGH'. Holyrood fountain pict. t.m. Buchan p.m.

Bottom edge flake glaze otherwise very good. NR £40-60+. (IM)



64. TAYPORT GINGER BEER BOTTLE. 8ins tall, ch. t.t. transferred. 'MELVILLE & C/ GINGER BEER TAYPORT' castle tower & horse pict. t.m. Repair to rear but this is a very rare (& impressive) pictorial. NR £60-80+. (IM)





65. BURNTISLAND GINGER BEER BOTTLE. 8ins tall, ch. t.t. c.c. closure, blue transfer. 'JAMES BISSET/ CHEMIST STONE/ GINGER BEER/ BURNTISLAND'. Rear lip chip. Buchan p.m. NR £30-40+. (IM)

**SALE DAY
FLOOR BIDDERS**

All lots sold **AS
SEEN.** Bidders must ensure items meet personal condition standards.

Cream pots

66.

BOLESWORTHS

PRIZE DAIRY CREAM POT. Green top, black pictorial transfer horse drawn dairy cart pictured.

'FRESH CREAM/ BOLESWORTHS/ PRIZE DAIRY'.

The rarest of all the sizes. Feint side/ rear glaze hairline & tiny pinhead base nick - fantastic transfer.

£1,800-
2,000+.



67. CROUCH END CREAMERY CREAM POT.

3.75ins tall, blue top, blue transfer 'PURE FRESH CREAM H. WILLIAMS & CO/ CROUCH END CREAMERY' with full cow pictorial. Very good. NR £60-80+



68. WALTERS GREEN CREAMERY CREAM POT.

3.75ins tall, blue top, blue transfer 'PURE FRESH CREAM H. WILLIAMS & CO/ WALTERS GREEN CREAMERY' with full cow pictorial. Very good. NR £60-80+

69. CO ANTRIM CREAM POT.

4.5ins tall, off white glaze, black transfer 'RATHKENNY CREAMERY GLENABRIFFE GLAN/ PURE CREAM/ CO-ANTRIM' full cow & harp pictured.

Very good.
NR £30-40+

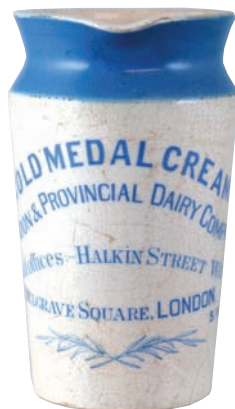


70. ERITH CREAM POT.

2.75ins tall, churn shape green top, green transfer 'HOME FARM DAIRY ERITH/ PURE RICH CREAM/ CELEBRATED FOR BUTTER & EGGS'. Full cow pictorial. Fabulously rare offering, despite the rim repair. NR £60-80+



71. STRANRAER CREAM POT. 6ins tall, **off white** glaze, **black** transfer 'GALLOWAY CREAMERY CO LTD/ FRESH/ THICK CREAM/ GUARANTEED PURE STRANRAER'. Good. NR £20-30+



72. LONDON & PROVINCIAL DAIRY CO CREAM POT. 4.25ins tall, **blue** top, **blue** transfer 'GOLD MEDAL CREAM/ LONDON & PROVINCIAL DAIRY COMPANY HEAD OFFICES HALKIN STREET WEST/ BELGRAVE SQUARE LONDON'. Again an exceptional rarity despite the rear handle restoration. NR £60-80+



73. NORTHALLERTON CREAM POT. 5.25ins tall, **green** top, **black** transfer 'THE WENSLEY DALE PURE MILK/ SOCIETY LIMITED/ PURE CREAM/ THE DAIRY NORTHALLERTON'. Port Dundas pottery mark. Extremely rare large size. Good. NR £60-80+



74. OXFORD CYLINDRICAL CREAM POT. 4.5ins tall, all **white** glaze, transferred. 'DEVONSHIRE CLOTTED CREAM FROM. E.F. GREENWOOD/ ITALIAN/ WAREHOUSEMAN OXFORD'. Extremely rare. Some restoration. NR £40-60+.

75. WESTON SUPER MARE CYLINDRICAL CREAM POT. 3.25ins tall, **white** glaze, **black** transfer 'DEVONSHIRE CREAM/ MINIFIE'S/ CREAM AND CREAM CHEESE/ FACTORY WESTON-SUPER-MARE'. Good. NR £40-60+



76. CREAM POT DUO. Tallest 4.25ins, 'RILEY'S DAIRIES/ HULL BRIDLINGTON/ SCARBORO...', plus 'RICHARDSON'S/ THICK CREAM/ THE CREAMERY/ SCARBORO', both with full cow pictorial. (2) NR £20-30+



77. BRISLINGTON CREAM POT. 4ins tall, churn shape, **brown** top, **black** transfer 'RICH THICK CREAM CO-OPERATIVE WHOLESALE/ SOCIETY LIMTD/ BRISLINGTON/ SOMERSET'. Good. NR £20-30+

78. BRISLINGTON CREAM POT. 3.75ins tall, churn shape, **brown** top, **black** transfer 'RICH THICK CREAM FROM THE BREEZY PASTURES/ OF THE WEST COUNTRY C.W.S. LIMTD/ BRISLINGTON/ SOMERSET'. Good. NR £20-30+



POSTAL BIDDERS

Postal bidders must satisfy themselves lot/ s meet their condition standards. For a more detailed inspection/ personal assessment please tel. BBR, give lot numbers, & call back later - to speak with AB.



79. ASTLEY CREAM POT.
5.25ins tall, **off white** glaze, **black** transfer 'MARKLANDS FARM DAIRY ASTLEY/ PURE/ RICH CREAM/ FRESH DAILY BOROUGH DAIRY/ LEIGH/ NATTEL/ NO 67'. Port Dundas p.m. Good. NR £20-30+

80. BRIXTON CREAM POT. 2.75ins tall, cylindrical pot, **white** glaze, **black** transfer 'SOUTH METROPOLITAN DAIRY/ BRIXTON... MADE ON THE PREMISES DAILY'. Some staining. NR £30-40+



81. ROBINSON'S DAIRIES CREAM POT.
3ins tall, **cream** glaze, **black** transfer 'ROBINSON'S DAIRIES 42/ FITZWARREN ST/ SEEDLEY/ BRANCHES/ WEASTE AND/ IRLAM-OTH-HEIGHT'. Good. NR £20-30+

82. CRYSTAL BROOK BRAND CREAM POT.
4ins tall, **green** top, **green** transfer 'CRYSTAL BROOK BRAND... FROM/ PEDIGREE JERSEY COWS'. Farmer & his cows pictured. Fantastic crisp printed example. Rear hairline. NR £30-40+



83. BLACKLEY CREAM POT. 4ins tall, **off white** glaze, **black** transfer 'PURE THICK CREAM I WALKER/ BLACKLEY'. Full cow pictorial. Very rare. Good. NR £30-40+



Black glass



84. DATED SEALED WINE BOTTLE. 9.75ins tall, dark olive green glass, tapering twisted neck with applied string rim, mid body seal reads 'G.H.H./ SILLATON/ 1789'. Very good. NR £250-300+. (MH)



85. SMALL MALLET WINE BOTTLE. 7.5ins tall, **dark olive green** glass, kick-up pontil base, applied collar lip bottle sealed with part contents. *Written on a piece of paper fastened to the bottle 'Frederik VIII of Denmark this bottle was given to one of the kings equerries on his retirement & has been in the family until I bought it in 1955' signed by M.R. Harris 29/11/14. Fabulous small size and delightfully crude! Very good. NR £100-120+. (MH)*

AFTER SALE PRICES REALISED

on: [www.sales@onlinebbr.com](mailto:sales@onlinebbr.com)
or **Facebook - BBR Auctions**
or email BBR for a pdf: sales@onlinebbr.com



86. ENGLISH ONION WINE BOTTLE. 6.25ins tall, **dark olive green** glass, applied string rim, kick-up pontil base. Some surface patination. NR £120-150+.



87. ENGLISH ONION WINE BOTTLE. 6.25ins tall, **dark olive** glass, applied string rim, kick up pontil base. Some magnificent surface iridescence & patination. NR £120-150+.



88. ENGLISH MALLET WINE BOTTLE. 7ins tall, **dark olive green** glass, tapering neck with applied string rim. Deep kick-up pontil base. Full body sheen, fabulous crude neck lean. Good. NR £80-100+.



89. EARLY BLUE GLASS BARREL. 6ins tall, **mid blue** glass, horizontal barrel on four applied feet, applied pewter fitting to top aperture. Pontil scars to both ends. Probably continental. Very good. NR £80-120+. (JR)



90. IMPERIAL PINT & HALF WINE? BOTTLE. 12.5ins tall, **dark olive green** glass, applied double collar lip, embossed 'IMPERIAL PINT & HALF' with crown above & diamond registration mark inbetween. Rare. Base chip. NR £60-80+.



91. SEALED CYLINDER WINE BOTTLE. 8.5ins tall, **dark olive green** glass, applied collar lip, low body seal near base reads 'I.C. HOFFMAN'. Base pontil.

A rare small size plus unusua; low body seal. Very good. NR £80-100+. (CM)



92. IRISH SEALED CYLINDER WINE BOTTLE. 11ins tall, **mid olive green** glass, applied lip. Base pontil, seal with wheatsheaf pictured reads 'WM FILGATE/ LISSDENNY'. Some slight marks, scratches & body wear, unusual light body colour. NR £120-150+. (CM)



93. SEALED CYLINDER WINE BOTTLE. 11ins tall, **dark olive green** glass, applied collar lip, base pontil. Body seal with letter 'P' coronet above - really well struck. Fine example. Very good. NR £120-150+. (CM)





94. SEALED CYLINDER WINE BOTTLE.
10.75ins tall, **dark olive green** glass, applied double collar lip, 3 piece mould Ricketts patent. Seal with 'W.W.' & lions head. Provenance William Wyndham of Dinton House

Wiltshire. Very good. NR £80-100+. (CM)



95. BOOK
'Sealed Bottles by Sheelah

Rugglesbrise'. With illustrations by Barbara Ashby. Leather bound. A rare copy? Very good. NR £20-30+.



Salt glaze

96. PUB NAMED JIM CROW FLASK. 8ins tall, **brown** top, lower **tan** salt glaze figure of Jim Crow in relief both sides imp'd 'LAWRENCE/ MARQUIS CLARINCADE/ UPPER SOUTHWICK ST/ PADDINGTON' to shoulder. Usual firing imperfections overall very good. NR £120-150+. (DD)



97. FOX'S HEAD STIRRUP FLASK. 5.5ins long, varying **tan** salt glaze flask in shape of fox's head. A scarce undamaged piece. Very good. NR £100-120+. (DD)



98. LORD BROUGHAM REFORM FLASK. 7.25ins tall, **brown** top lower **tan** salt glaze, half figural of Lord

Brougham holding scroll 'THE/ TRUE SPIRIT OF/ REFORM' & 'BROUGHAM'S/ REFORM/ CORDIAL' below. Doulton p.m. to rear. Overall glaze variations, minor firing flaws. Good. NR £80-100+. (DD)



99. LORD BROUGHAM REFORM FLASK. 8.75ins tall, **brown** top lower **tan** salt glaze, half figural of Lord Brougham holding scroll imp'd 'THE/ TRUE SPIRIT OF/ REFORM' with 'BROUGHAM'S REFORM/ CORDIAL' below. Doulton p.m. to rear. Small flake to rear (below hair) & the usual minor manufacturing blemishes. Rare large size. NR £80-120+. (DD)





100. JIM CROW FLASK.

10.5ins tall, handled flask
brown top, lower **tan** salt glaze
figure of Jim Crow in bold relief
to both sides. A very
rare large size
handled reform.
Various grubby
areas, overall good.
NR £80-120+.
(DD)



101. SLAB SEALED VETINARY JAR. 2.25ins

tall, **grey/ green**
glaze, slab reads "A.
HOWARTH VET.Y.
INSTITUTION/
POOL STREET".
Short hairline to rear
- nothing inside.
Very good. NR £40-
60+. (DM)



102. HULL SLAB SEAL FLASK.

11ins tall, **grey/ green** glaze flask
ribbed sloping
shoulders, slab
seal reads 'G.W.
EVANS/ 63
WHITEFRIARS
GATE HULL'.
Very good. NR
£200-300+.
(DM)



103. GAINSBORO SLAB SEAL PORTER.

8ins tall,
grey/ green glaze porter, oval
shape slab seal reads 'W & G
SHARPE/ GAINSBORO'.
Simplistic - but all the
more wonderful for that!
Very rare. Very good. NR
£80-120+. (DM)



104. LONDON SPIRIT FLASK.

8.25ins tall, **brown** top, lower **tan**
glaze, shoulder imp'd 'S. WEST WINE
& SPIRIT MERCHANT/ 18
TITCHBOURNE ST EDGWARE RD'.
Very good. NR £80-100+.



105. PUB NAMED

SALT GLAZE FLAGON. 11.75ins
tall, **brown** top lower **tan** salt glaze
imp'd 'G. PALLETT/ WINE &
BRANDY MERCHANT/ COACH &
HORSES/ WELBECK ST'. Handle
repair & neck chip. NR £20-30+.



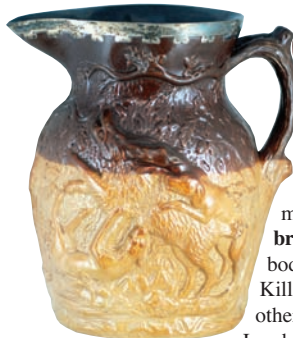
106. MORTLAKE STYLE JUG. 8.25ins
tall to top of hall marked silver lift up lid with
thumb piece. Top **brown**, lower **tan** salt
glaze, raised circular area to front with horses
being tended by men, drinkers, toppers & trees
to sides. Hunting scene around
base. Body hairlines one
side. Superb sprigs? NR
£80-100+. (DD)





107. MORTLAKE STYLE JUG. 9.5ins tall to top of silver (?) lift up

lid with thumb piece. Top half **brown** lower **tan** salt glaze raised hunting motifs, trees, windmill, cottage etc. Base chip & hairlines. Even finer detailed sprigs than previous. NR £80-100+. (DD)



108. DOULTON LAMBETH LARGE JUG.

9.5ins tall to top of half marked silver rim. Top half **brown**, lower **tan** salt glaze bod relief with hunting (The Kill) scenes, hounds to the other. Base imp'd Doulton Lambeth. Only the 2nd example

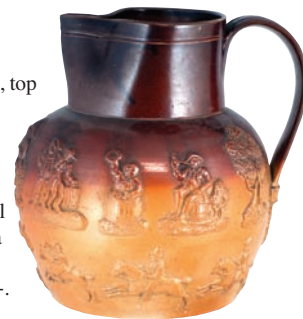
of this I've ever seem? Very good. NR £80-120+. (DD)

109. LARGE STONEWARE JUG.

10.25ins tall, shiny **brown** glaze, **grey/ green** interior, greyhound handle face mark to pouring lip, coat of arms to front 'PRINCE OF WALES' recumbant lions either side. Thistle rose & Shamrock below rim. Impressive! Very good. £80-120+.



110. LARGE SALT GLAZE JUG. 9ins tall, top half **brown**, lower **tan** salt glaze raised motifs all around, drinkers, smokers, hunting scene etc. Fine colouring, well detailed sprigs - all on a scarce large size piece. Very good. NR £60-80+. (DD)



111. COFFEE POT. 10ins tall to top of lid, shiny **brown** glaze, with raised grapes & vines below rim.

Raised figures to main body. Very good. NR £30-40+. (DD)



112. LARGE TAM O' SHANTER JUG. 11.5ins tall, **brown & tan** salt glaze Tam O' Shanter character face & shoulders jug. Handle to rear. Chip under hat & chips to handle. NR £60-80+. (DD)

113. SOUTER JOHNNY JUG. 11ins tall, **brown & tan** salt glaze, large Souter Johnny character jug handle to rear, spout formed from his hat. Chips to base. NR £60-80+. (DD)





114. BRAMPTON (?) BASKET. 5.25ins tall to top of handle, square shape 6.25 x 5ins, tan salt glaze with

basket weave detail. Hairline to handle base one side - but stable, really does not detract - fabulous, rare, survivor! NR £60-80+.

115. SMALL BARREL FLASK. 4.5ins tall, tan salt glaze imp'd 'JONES/ NEWINGTON RD' to top. Delightful colour/ great colour. Very good. NR £120-150+.



116. HAND SHAPE SPIRIT FLASK.

10.25ins long, brown salt glaze naturalistically highly modelled with fingernails, veins & lines. Extraordinary item, very rare. Lip chip. NR £60-80+.



117. QUEEN VICTORIA FLASK.

7.5ins tall, shiny brown flask, half modelled head & shoulders of Queen Victoria, cherubs pictured below & to rear. Very good. NR £30-40+. (DD)



118. OLD TOM FLASK. 9.25ins tall, shiny brown glaze flask modelled as man astride barrel, impressed 'JEM CROW' below barrel. Very good. NR £20-30+. (DD)



119. MONEY BOX. 4ins tall, shiny brown glaze modelled as a Mr Punch type character. Coin slot to his hump. Hole to rear. NR £20-30+. (DD)



120. DATED SALT GLAZE TWIN HANDLED LOVING CUP.

5.5ins tall, dark brown top, lower tan salt glaze, drinkers, smokers in relief, imp'd 'W. LAWS/ 1837' below rim. Hand incised under base



'MADE BY/ J MILSOM/ BRISTOL'. Very unusual! Very good. NR £100-120+. (JR)



121. BOOK 'The ABC of English Salt-glaze Stoneware/ From Dwight to Doulton' by J.F. Blacker. NR £20-30+.



TERMS & CONDITIONS are printed to catalogue rear. All bids accepted on the understanding these have been read & accepted

SALE DAY FLOOR BIDDERS
ALL items sold **AS SEEN**. Bidders must ensure lots meet personal standards

Whisky jugs

122. HADDINGTON WHISKY JUG. 6.75ins

tall to top of stopper, flattened lozenge shape, **off white** glaze, **black** transfer of a kilted highlander hurling stone - both sides. 'THOMAS SIRRELL/ HADDINGTON/ 1901/ MOUNTAIN DEW' imp'd **black** lettering to shoulder clasped hands, horn & portraits of young & old Queen Victoria below. Plaited handle to rear. Very good. NR £300-400+. (AB)



123. THE GREYBEARD WHISKY JUG.

8ins tall, **tan** neck, rear handle, **sepia** transfer 'THE GREYBEARD' to shoulder, 2 kilted highlanders toasting each other pictured 'HEATHER DEW/ WHISKY MITCHELL BROS GLASGOW PROPRIETORS' below. Caution lines to rear. Port Dundas p.m. to base. A very fine condition example of an extreme rarity. Very good. NR £300-400+.



124. CATTO'S WHISKY JUG.

8ins tall, **tan** neck, **black** transfer 'CATTO'S/ HIGHLAND WHISKY ABERDEEN' kilted highlander Claymore in hand to front. Buchan p.m. to base. Very good. NR £80-120+. (JR)

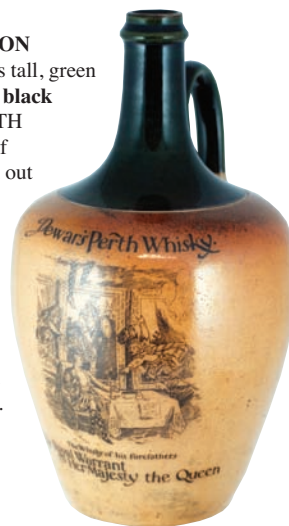


125. HAPPY DAYS WHISKY JUG. 8ins

tall, **tan** neck, rear handle, **black** transfer 'HAPPY DAYS FAMOUS/ OLD RYE WHISKY' 3 tachers sat around table drinking. Very good. NR £60-80+.

126. DEWARS DOULTON WHISKY JUG. 11.75ins tall, green

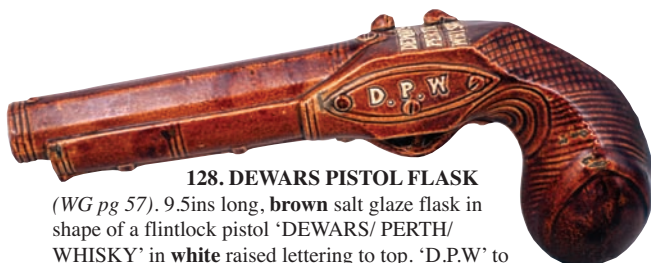
top, lower **tan** salt glaze, **black** transfer 'DEWARS PERTH WHISKY' with picture of Scotsmen reaching down out of pictures fro a drink. Below 'THE WHISKY OF HIS FOREFATHERS/ BY ROYAL WARRANT/ TO HER MAJESTY THE QUEEN' near base. Doulton Lambeth imp'd mark. Very good. NR £120-150+. (GM)



127. BALDERSON'S WHISKY JUG. 6ins tall,

squat shape, **tan** neck, rear handle, **black** transfer 'BALDERSON'S/ OLD HIGHLAND WHISKY' with stag pict. t.m. Good. NR £60-80+. (GM)





128. DEWARS PISTOL FLASK

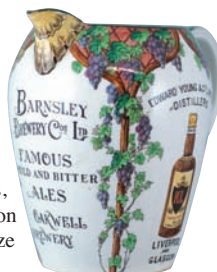
(WG pg 57). 9.5ins long, **brown** salt glaze flask in shape of a flintlock pistol 'DEWARS/ PERTH/ WHISKY' in **white** raised lettering to top. 'D.P.W.' to side, Doulton Lambeth imp'd mark. Very good. NR £250-300+. (DD)



Pub jugs

130. BARNSELY BREWERY CO PUB JUG.

7ins tall, brown transferred lettering to front 'BARNSELY/ BREWERY COS LTD/ FAMOUS/ MILD AND BITTER/ ALES/ OAKWELL/ BREWERY' with coloured transfers showing whisky bottles to sides 'EDWARDS YOUNG & CO LIMITED/ DISTILLERS/ LIVERPOOL/ AND/ GLASGOW' & 'BROWN CORBETT & CO/ DISTILLERS BELFAST & COLERAINE' with wheat sheafs hops, grapes & vines featured. Royal Doulton circle mark lion & crown. Minute glaze flake & nicks to pouring lip - doesn't detract - still up therer amongst the worlds very finest of jugs, still rare. NR £600-700+.



EITHER OR BIDS

Absentee bidders on a tight budget can use BBR's unique 'either' 'or' option. Bid £X on a lot £Y on another, if unsuccessful. We can even carry amounts over. **BUT** - make instructions simple & clear! If in doubt email AB.

SALE DAY FLOOR BIDDERS

- all items sold **AS SEEN**. Bidders must ensure lot/s meet personal condition standards.

129. KINGSWARE LEATHER BOTTLE

(J.L. pg 30). 6.5ins long, **dark shiny brown** glaze, tavern scene one side, character drinking on other. Royal Doulton p.m. Small side chip, still a very rare offering. NR £80-100+.



131. AINSLIES PUB JUG. 4ins tall, **blue & white** Spode type pictorial transfer, with **black** transfer on white showing

Edinburgh Castle & National Gallery & 'AINSLIE'S/ WHISKY' above & below to both sides. Good. NR £150-200+. (NL)





MADE FOR
JAMES BUCHANAN & CO
BY
FRANK BEARDMORE & CO
FENTON
2 2 5

132. BUCHANAN'S PUB JUG. 7.5ins tall, white glaze coloured transfer of hunting scene to front 'BUCHANAN'S' twice below rim, 'SCOTCH WHISKY'

to sides "SPECIAL" (RED SEAL)' below scene to front. 'MADE FOR JAMES BUCHANAN & CO/ BY FRANK BEARDMORE & CO/ FENTON' to base. Rim chip, still rare, easy repair? NR £300-400+.



134. LAING'S PUB JUG. 4ins tall, white glaze, black transfer 'ASK FOR/ LAING'S/ BEN EWE/ WHISKY' both sides. J.A. Campbell & Son Belfast to base. Good. NR £50-60+. (NL)

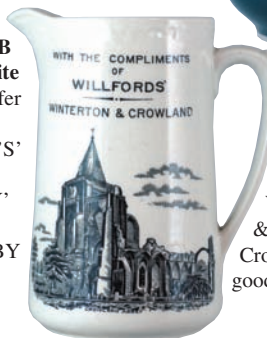


J.A. CAMPBELL & SON
64 ROYAL AVENUE
BELFAST.

135. BURKES PUB JUG. 6.5ins tall, green top & base, burnt orange transfer 'BURKE'S/ DUBLIN WHISKEY' both sides. Still rare, more so this fine a condition? Very good. NR £150-200+. (NL)



136. SCUNTHORPE BEER JUG. 7ins tall, white glaze, black transfer 'WITH THE COMPLIMENTS OF/ WILFORDS WINTERTON & CROWLAND' with Crowland Abbey pictured. Very good. NR £40-60+.



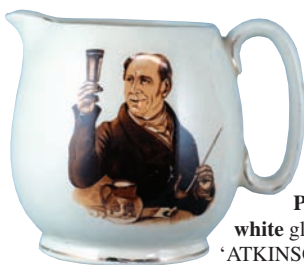
137. BRAKSPEARE'S PUB JUG. 4ins tall, red glaze, black transfer 'BRAKSPEARE'S/ HENLEY ALES' with portrait of the founder 'ROBERT BRAKSPEARE/ 1749-1812' both sides. Wade p.m. Crack to handle. NR £20-30+. (NL)



138. WM GREER & CO O.V.H. PUB JUG. 6ins tall, flesh coloured face jug, black transfer 'GREERS/ SPECIAL SCOTCH WHISKIES' below rim, 'O.V.H. 10 YEARS OLD/ INNS OF COURT VERY OLD/ WM GREER & CO LTD GLASGOW' both sides 'J.A. CAMPBELL & SON' to base. Faint rim hairline but a far more detailed, well struck, transfer than normally found on these - really good looker! NR £60-80+.



follow BBR Auctions on Facebook: Auction results, News & Updates regularly added to FB - simply befriend us!

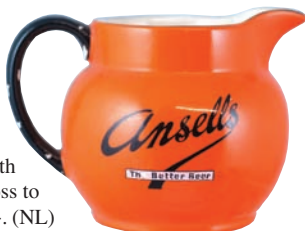


139. ATKINSONS ALES PUB JUG. 4.5ins tall, white glaze brown transfer 'ATKINSONS/ ALES' one side, picture of gent holding glass of beer

in hand, & pipe in other. Causton London p.m. Good. NR £40-60+. (NL)



140. ANSELLS PUB JUG. 4ins tall, orange glaze, black transfer 'ANSELLS/ THE BETTER BEER' both sides. Some glaze loss to handle. NR £40-60+. (NL)



143. PHILLIPS PUB JUG. 5ins tall, white glaze, black & red transfer 'SMOKE/ PHILLIPS/ "EMPIRE" PURE LEAF/ 71/2 D/ PER OZ' twice to front. John Bull type character to both sides. Good. NR £30-40+. (NL)



144. WHITBREADS PUB JUG. 4ins tall, white glaze, black transfer 'WHITBREAD'S/ PALE ALE' one side 'WHITBREADS/ LONDON STOUT' other. Simple - but rare! Good. NR £30-40+. (NL)



141. CATTO'S V.O.S.H. WHISKY CLEAR GLASS DECANTER. 10.25ins tall to top of stopper, acid etched lettering 'CATTO'S/ V.O.S.H./ WHISKY/ ABERDEEN'. Very good. NR £60-80+. (NL)



145. TEACHERS PUB JUG. 7.25ins tall, pewter metal jug engraved 'TEACHERS/ HIGHLAND CREAM OLD SCOTCH WHISKY' both sides. Some dents etc. NR £40-60+. (NL)



142. GRANT'S PUB JUG. 4ins tall, white glaze, black transfer 'GRANT'S/ WHITE CAP/ GRAND LIQUEUR SCOTCH WHISKY' both sides. Very good. NR £40-60+.



146. MITCHELL & BUTLERS PUB JUG. 3.75ins tall, blue glaze, black transfer 'MITCHELLS & BUTLERS/ "DUMBARTON"/ FINEST OLD SCOTCH' both sides. T. Upton & Sons Birmingham p.m. Good. NR £40-60+. (NL)



147. MITCHELL & BUTLERS PUB JUG. 3.75ins tall, blue glaze, black transfer 'MITCHELLS & BUTLERS "BALLY BOY"/ OLD IRISH WHISKY' both sides. Rim hairline. NR £30-40+. (NL)

POSTAL BIDDERS ... must satisfy

themselves lot/ s meet their condition standards.

For a more detailed inspection/ personal assessment please tel. BBR to speak with AB.



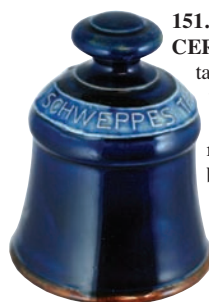
- 148. DOULTON GINGER WINE BARREL.** 10ins tall, brown, blue, pale green coloured salt glaze. 'SMITH & TYERS' in white recessed lettering 'GINGER WINE' in blue raised lettering to front. Art Nouveaux style details all round top & bottom, bung hole to front/ base. 'Property of' across top. Royal Doulton circle mark lion & crown imp'd base mark. A

rare small size artware barrel. Very good. NR £120-150+.

- 149. PLYMOUTH GIN MATCHSTRIKER.** 3ins tall, 4.75ins diam at base. 'COATES ORIGINAL PLYMOUTH GIN' around matchwell 'COATES & COS ORIGINAL PLYMOUTH GIN' around base. Shelly p.m. Very good. NR £40-60+. (GM)



- 150. GORDON'S & CO LTD MATCHSTRIKER.** 3.5ins tall, 5ins diam at base. 'GORDON'S FAMOUS/ IVY LEAF/ SCOTCH WHISKY' to matchwell 'GORDON & CO LTD DISTILLERY 132 GOSWELL RD LONDON TANQUERAY' around base. Matchwell broken off & reglued - worth 'fixing'? Royal Doulton p.m. NR £30-40+. (AB)



- 151. SCHWEPPE'S CERAMIC BELL.** 4.5ins tall, dark blue glaze 'SCHWEPPE'S TABLE WATERS' in white raised lettering on pale blue. Doulton stoneware piece, though unmarked. Very good. £20-30+. (GM)

- 152. SCHWEPPE'S SET OF 4 ASHTRAYS (?)** 3 blue & white willow pattern design. 'SCHWEPPE'S L'AME DE LA PAMPLEMOUSSE' & 'SCHWEPPE'S "INDIAN TONIC" plus green willow pattern example 'SCHWEPPE'S BITTER LEMON'. (4) Good. NR £30-40+.



Pipes

- 153. GROUP OF CLAY PIPE BOWLS.** (14) pipe bowls inc. large black head bowl, Arab, lady with hat, alligator, owl, vintage car & thumbnail etc. NR £20-30+.



- 154. GROUP OF CLAY PIPE BOWLS.** (14) inc. large Santa Claus, bear, elephant, potty, bearded gent, soldier, fish etc. NR £20-30+.



- 155. GROUP OF CLAY PIPE BOWLS.** (14) bowls inc. large cockerel, coloured Arabs head bowl, pigshead, rabbit, horse & cart, nude lady, general & man stood against tree etc. NR £20-30+.



Kitchenalia

- 156. WATER FILTER.** 15ins tall to top of domed lid. Brown glazed waisted form water filter imp'd 'LIPSCOMBE & CO/ PATENT 233 STRAND/ NEAR TEMPLE BAR/ LONDON' to front (also to inside). Coat of arms below. Grapes & vines on side & lid. Metal tap to bung hole near base. Scarce small size - simply as good as they ever come - Garth had great taste & a good 'eye'! Very good. NR £60-80+. (GM)





157. THE ARCTIC FOOTWARMER. 9ins tall, flattened circular shape. **Off white** glaze, **black** transfer 'THE ARCTIC/ FOOTWARMER/ DENBY STONEWARE REDG NO 628876'. Eskimo & igloo pictorial. A very good example. NR £30-40+. (GM)

158.

QUEENS MUFF WARMER. 5.25ins long, egg shape muff warmer. **Off white** glaze, **brown** ends transferred 'THE QUEEN MUFF WARMER/ REDG/ 537485/ GOURMET' with chain carrying handle. Very good. NR £30-40+. (GM)



159. THE DAINTY MUFFWARMER. 5.25ins tall, flattened rectangular shape. **Off white** glaze transferred 'THE/ DAINTY/ MUFF/ WARMER' to front. 'S. MAW SON & SONS LONDON' t.m. to rear. Very good. NR £30-40+.



160. PLYMOUTH PRESERVE JAR. 7ins tall, aqua glass. Embossed 'H. MATTHEWS/ MANUFACTURING CONFECTIONER/ PLYMOUTH' with rince of Wales plumes to side. Very good. NR £20-30+. (GM)

161. DIAMOND REGISTRATION MARKED PICKLE (?) JAR. 8ins tall, aqua glass. Cathedral style with gothic arches panels. Diamond registration mark to base. Very good. NR £30-40+. (GM)



162. GRIMWADES BLANC-MANGE & JELLY MOULD. 5ins tall, 11ins long. **White** glaze mould in shape of a lion 'THE BRITISH LION BLANC-MANGE & JELLY MOULD' in **green** lettering below rim. Grimwades p.m. to base. Rare. Very good. NR £30-40+.



Advertising

162A. MARSTON'S ALES PUB MIRROR. In oval wooden frame, 33ins across. MARSTON'S/ BURTON ALES' in **gold & black** lettering with 3 barrels t.m. Good. NR £80-120+. (AB)



163. MARSTON'S PUB SIGN. 27 by 15ins, metal framed slate sign. 'MARSTON'S BURTON/ ALES/ MARSTON THOMPSON & EVERSLED LTD/ BURTON ON TRENT' in **gold** recessed lettering. A fabulous example of its type. Very good. NR £120-150+. (JR)



164. TEACHERS WHISKY MULTICOLOURED FRAMED ADVERT. 21.5 by 16.5ins, kilted Scotsman stood at bar. "TEA SIR?"/ "TEA ME? NO! TEACHERS!" "TEACHERS/ "HIGHLAND CREAM" WHISKY" in it original frame. Good. NR £80-100+.



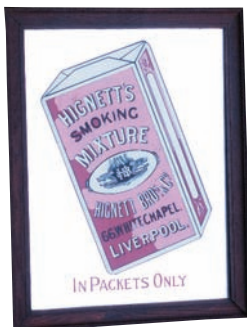


165. BOTTOMLEY'S LARGE FRAMED MULTICOLOURED ADVERT. 40 by 30ins, 'BOTTOMLEY'S/ MALTED MILK TOFFEE'. 20's style figures of gent & 2 ladies pictured. Good. NR £60-80+.

166. CAILLERS WOODEN FRAMED ADVERTISING MIRROR. 38.5 by 26.5ins, 'CAILLER'S GENUINE SWISS MILK/ CHOCOLATE' blue, gold & black, & red, gold & black



lettering. Good. NR £80-120+. (JR)



167. HIGNETT'S WOODEN FRAMED ADVERTISING MIRROR. 27 by 21ins, tobacco packet pictured. 'HIGNETT'S/ SMOKING/ MIXTURE... 66 WHITECHAPEL/ LIVERPOOL/ IN PACKETS ONLY'. Great colours. Very good. NR £60-80+.

168. THE MONTPELIER MINERAL WATERS COLOURED FRAMED ADVERT. 'THE MONTPELIER MINERAL WATERS/ IN CODD'S PATENT STOPPERED BOTTLES/ EASY & SAFE TO OPEN QUICKLY EMPTIED/ NO TAINT OF CORK/ THE WATERS COMING ONLY/ IN CONTACT WITH GLASS'. Some overall surface marks etc but still a significant showcard. NR £60-80+.



169. ALLCOCK'S ENAMEL SIGN. 20 by 12ins, 'BEGIN RIGHT/ BY USING THE / RIGHT TACKLE ASK FOR/ ALLCOCK'S'. "Aerialite" sea reel pictured. 'S. Allcock & Company Ltd'. Very good. NR £60-80+.



170. CECIL ALDIN FRAMED MOTORING PRINT. 29 by 23ins. Coloured scene showing lady sat in vintage car, huntsman & his horse to side offering his help. Good. NR £60-80+.



171. CECIL ALDIN FRAMED MOTORING PRINT. 18 by 12ins, coloured scene showing lady & gent with motor cycle & cycle vintage car in background. Poster on wall of village car in back ground reads 'CYCLES/ AND/ MOTOR CARS/ USE ONLY/ BRAMPTON CHAINS/ SOLD BY/ ...INS/ & SONS/ MOTOR AGENTS'. Good. NR £40-60+.



172. HUDSON BICYCLES CIRCULAR ENAMEL SIGN. 19.5ins diam, "NEW HUDSON"/ BICYCLES BIRMINGHAM' black lettering on white with arm holding axe in red & black. Some outer edge chips & rust etc. NR £80-100+.





173. PRATT'S MOTOR OIL. Circular double sided enamel sign. 21ins diam, 'PRATT'S/ MOTOR/ OIL' in **blue & red** lettering in **white**. Outer edge chips & rust etc. NR £60-80+.



174. GARGOYLE MOBILOIL. Double sided oval enamel sign, 18ins across. 'GARGOYLE/ MOBILOIL/ REDG TRADE MARK' gargoyle pictured **red & black** lettering on **white**. Chip to surface one side & outer edge chips & rust etc. NR £80-120+.



175. R.A.C. DOUBLE SIDED ENAMEL SIGN. Diamond shape, 25.5 by 22.5ins. 'RAC AGENT' **white** lettering on **blue**. Outer edge chips, rust etc. NR £80-120+.



176. B.P. MOTOR SPIRIT DOUBLE SIDED ENAMEL SIGN. 23 by 16ins "B.P."/ MOTOR/ SPIRIT" **blue** lettering on Union flag background. Surface chips & outer edge chips & rust. NR £60-80+.



177. PRICES MOTOR OILS DOUBLE SIDED ENAMEL SIGN. 24 by 18ins. 'PRICE'S/ MOTOR OILS' **white & blue** lettering on **red** background. 'SHIP BRAND' sailing ship pictured. Surface chips & outer edge rust & chips. NR £60-80+.



178. SHELL LUBRICANT DISPENSER. 19ins tall, 6.5ins wide, semi circular shape. 'UPPER CYLINDER/ SHELL/ LUBRICANT/ RETAIL PRICE 1D ENOUGH TO TREAT 2 GALS OF PETROL'. **Yellow & black** lettering on **red**. General wear & rust spotting. NR £40-60+.

179. REDX LUBRICANT DISPENSER.

17ins tall, 9ins

wide. Semi circular shape, 'UPPER CYLINDER LUBRICANT REDX YOUR CAR/ CURES TUNE-UP GUMMING' **red & gold** on dark **blue** background. General wear rust etc. NR £40-60+.



180. GLICO MOTOR OIL CAN. 10ins tall, 'REDLINE GLICO LIMITED/ IT WILL PAY YOU TO USE GLICO/ MOTOR OILS/ FOR TOP GEAR PERFORMANCE' **black** lettering on **yellow**. Some general wear & rust spotting. NR £30-40+.

CONDITION - help us to help you!

If you spot condition differences/ faults/ repairs we haven't please advise BBR staff. We always announce such amendments prior to a sale.



181. ROYAL DAYLIGHT OIL CAN TIN ADVERT. Shield shape 11.25 by 9.25ins., 'ALL BRITISH ROYAL DAYLIGHT/ OIL CAN/ FOR ROYAL DAYLIGHT OIL'. **Blue & silver** lettering on pale background, red oil can pictured. Good. NR £60-80+.



THOMAS GUEST LICENSEE FRAMED SIGN. 44.5 by 13.75ins. 'THOMAS GUEST/ LICENSED RETAILER OF ALE BEER STOUT & TOBACCO/ NOT TO BE CONSUMED ON THE PREMISES' in **gold & black** lettering. NR £40-60+.



183. DISPLAY CABINET. Wooden framed display cabinet, 13 x 16 x 11.5ins. Sloping glass front, single wooden shelf, rear door. Suitable home or stall stock. Good. NR £60-80+.

Poisons & Cures

184. TIC & TOOTHACHE CRAYON BOTTLE. 1.75ins tall, **cobalt blue**, six sided small bottle embossed 'TIC & TOOTHACHE CRAYON/ G. BENNETT YORK'. An outstanding, **previously unrecorded find.**

As dug, inside needs a wash out. Overall exc/ very good. NR £400-600+



185. WM RADAMS MICROBE KILLER BOTTLE. 10.5ins tall, **deep amber** glass, square section embossed 'GERMBACTERIAR/ FUNGUS DESTROYER/ CURES ALL DISEASES' man beating skeleton pictured 'WM RADAMS MICROBE KILLER/ REGISTERED RADE MARK DEC 13 1887'. A crisply struck example. Very good. NR £80-120+. (GM)



186. WARNERS SAFE NERVINE BOTTLE. 9.25ins tall, **light amber** glass embossed 'WARNERS/ SAFE/ NERVINE/ LONDON' with the familiar safe motif t.m. Just a little minor haze. Good. NR £30-40+.



187. WARNERS DIABETES CURE BOTTLE. 9.5ins tall, **medium amber** glass embossed 'WARNERS/ SAFE DIABETES/ CURE/ LONDON' with familiar safe motif t.m. A little inside haze to rear, otherwise very good. NR £30-40+.



188. WARNERS TIPPECANOE BOTTLE. 9.25ins tall, **deep amber** glass, log shape bottle very heavily embossed 'H.H. WARNER & CO/ TIPPECANOE' & canoe upright. 'PAT NOV 20 8' embossed to base. Very good. NR £40-60+.



CONDITION - help us to help you!

If you spot condition differences/ faults/ repairs we have not please tell BBR staff. We always announce such amendments before the sale.



189. PRICES PATENT BOTTLE.

7.5ins tall, **cobalt blue** glass wedge shape bottle embossed 'PRICES/ PATENT/ CANDLE/ COMPANY/ LIMITED' with diamond registration mark below rear base. Base embossed 'K B Ltd/ L/ 10872'. Quality 'classic'! Very good. NR £60-80+. (GM)

190. WIDE NECKED ETON STAR POISON BOTTLE. (DP

Pg 58) 4.75ins

tall, **cobalt blue** glass, wide necked star section with flat black horizontal ribs 'RD 716057' embossed near base 'POISON' & 'NOT TO BE TAKEN' vertically between ribs. Very rare. Very good. NR £200-300+. (NL)



191. SUBMARINE POISON BOTTLE. 2.5ins tall, 4ins long, **cobalt blue** glass, embossed 'POISON' to front 'REGISTERED NO 336907' to base. Professional restoration to rear of lip. NR £150-200+. (NL)

192. WILSONS PATENT POISON BOTTLE. 5.5ins tall, **bright green** glass triangular shape with notched edges & vertical ribs, embossed 'NOT TO BE TAKEN' & 'CAUTION' below shoulders, 'PATENT' near base, '4oz' to base. Exc/ very good. NR £150-200+. (NL)



193. AMMONIA BOTTLE. 11.75ins tall, **dark olive green** glass cylinder bottle embossed diagonally 'POISONOUS/ NOT TO BE TAKEN', criss cross embossing to front. 'R. GERRETT & SONS/ LEVEN' to rear. Very good. NR £40-60+. (NL)



194. CREME VASE. 7.5ins tall, **cobalt blue** glass shapely bottle with finger indents to rear embossed 'CREMEX/ SHAMPOOING VASE/ REGISTERED DESIGN'. Very good. NR £30-40+. (GM)



195. LARGE POISON SHOP ROUND. 10.75ins tall to top of cut glass stopper, **cobalt blue** glass with horizontal moulded ribbing. 'EXT./ BELLAD IQ.' in **white** enamelled lettering with 'POISON' in **red** enamel lettering to top & bottom. A stunning example of it's type. Very good. NR £150-200+.



196. SHOP ROUND. 7.5ins tall to top of chisel stopper. **Cobalt blue** glass with horizontal moulded ribbing. 'LIN./ ACONIT. P.B.' in white enamelled lettering. Very good. NR £60-80+.



TERMS & CONDITIONS

are printed to catalogue rear. All bids accepted on the understanding these have been read & accepted.



- 197. LEWIS & TOWERS FLASK POISON BOTTLE.** 8.5ins tall, **cobalt blue** glass, rectangular shape. Ground lip, embossed vertically 'POISONOUS/ NOT TO BE TAKEN' with hob nail protrusions to sides & side panels. 'RD NO 590 540' to rear. '20 OZ' to base. Very rare size. Very good. NR £20-30+. (GM)



Pharmacy

- 198. GLASS CARBOY.** 12ins tall, shop display bottle, **deep purple** glass, rolled lip ground pontil base painted label in **gold, red & black** 'TR: OPII'. Superb colour. Very good. NR £150-200+.



- 199. LARGE SHOP DISPLAY ROUND.** 12.75ins tall, **deep purple** glass, rolled lip with pontil base 'SODAE/ BICARB' **black** lettering on **gold** shield shape painted label. Another fabulous coloured item when backlit. Very good. NR £80-120+.

- 200. SHOP DISPLAY ROUND.** 12.25ins tall to top of tin cap, **olive green** glass, rolled lip, 3 piece mould 'ACID/ TANNIC' **black** lettering on painted label. Very good. NR £60-80+.



- 201. SHOP DISPLAY ROUND.** 12ins tall, **olive green** glass, short neck with flared lip, sharp base pontil. Painted label in **gold, red & black**, reads 'ACET' SCILLAE'. An absolute stunner - very rare. Very good. NR £150-200+.



- 'SYR: RH OEA' & 'SYRAURAN'. Pontil bases. (2) Very good. NR £40-60+.

- 203. PAIR OF SHOP ROUNDS.** 9ins tallest to top of shoulders, **green** ribbed glass, recessed labels underglass 'ACID/ NITRICE' & 'TINCT/ CANTHAR' in **gold, red & black**. (2) Very good. NR



- 204. PAIR OF SHOP ROUNDS.** 9ins tallest to top of stoppers, **cobalt blue** glass, recessed labels under glass in **gold, white, red & black**. 'SYR:/ ALTHAEAE' plus 'OXYM/ SCILLAE' (Some cracking to this label). (2) NR £40-60+.



SALE DAY FLOOR BIDDERS

All items sold **AS SEEN**. Bidders must ensure lot/s meet personal condition standards.



205. STONEWARE DRUG JAR. 8ins tall, off white glaze, raised coat of arms to front with 'WAYTE NO5 GRACECHURCH ST' in raised lettering to fancy scroll above. Never seen another of these? Very good. NR £40-60+.

206. SALT GLAZE DRUG JAR. 8ins tall, brown salt glaze jar. Waisted form gent smoking pipe sprig to front, scroll above with lettering remnants 'OLD MELDRU'. Sprigged grapes & vines below rim, & around base. Fine, & scarce, small size. Very good. NR £40-60+.



208. 3 CHEMIST SHOP ROUNDS.

Tallest 8.5ins tall. Pontilled cobalt blue glass example, paper label 'TINCT/ GENTIANAE'. Plus clear glass 'QUIN/ HYDROCHL' with label under glass. Plus turquoise blue glass, tin cap, labelled 'ILLUCIUM/ ANISAT'. (3) Good. NR £30-40+.



ABSENTEE BIDDING FORMS

Following a reneged bid BBR insists **ALL** Postal Bid sheets **MUST LIST FULL C.C. details**
- or bids will **NOT BE ENTERED!**



Miniature figural flasks

209. BELLOWS FLASK.

3.75ins

tall, aqua glass sheared lip EMBOSSED 'R.G.'

Extremely rare. Very good. NR £30-40+.



210. SOLDIER? FLASK. 4.25ins

tall, aqua glass sheared lip figural of a soldier(?) holding a rifle. Very good. NR £20-30+.



211. VIOLIN FLASK.

3.25ins tall, aqua glass sheared lip, modelled as a violin. Very good. NR £20-30+.



212. BOOT FLASK. 3ins tall, aqua glass, sheared lip, in shape of a boot. Very good. NR £20-30+.



213. PISTOL FLASK. 5ins long, aqua glass, sheared lip in shape of a pistol. Very good. NR £20-30+.



214. BIRD FLASK. 3ins long, aqua glass sheared lip in shape of a bird. Very good. NR £20-30+.





Inks

- 215. TEAKETTLE INK.** 2.5ins tall, **pale green** glass tapering ten faceted shape, upturned spout with sheared lip. Very good. NR £150-200+. (MH)



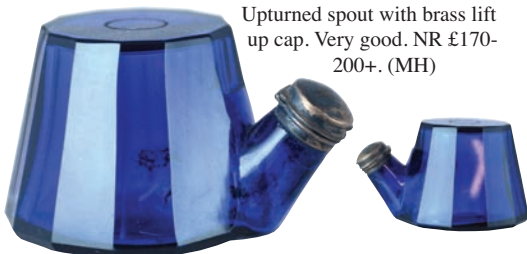
- 216. TEAKETTLE INK.** 2ins tall, opaque **white** glass waisted, tapering octagonal shape, upturned spout with brass fitting (no cap) with hand painted floral design. Very good. NR £170-200+. (MH)



- 217. TEAKETTLE INK.** 2ins tall, **deep purple** glass tapered octagonal shape, upturned spout with brass fitting (no cap). Very good. NR £120-150+. (NL)



- 218. TEAKETTLE INK.** 2.25ins tall, **cobalt blue** glass, 12 sided tapering shape. Upturned spout with brass lift up cap. Very good. NR £170-200+. (MH)



- 219. UNSPILLABLE INKWELL.** 2ins tall, aqua glass ribbed circular inkwell. Very good. NR £30-40+. (MH)



- 220. COTTAGE INK.** 2.5ins tall, aqua glass cottage shape ink, windows & door to front, water butt to side. Pen knib recess to rear. Very good. NR £80-120+. (MH)

- 221. HYDE EMBOSSED INK.** 2ins tall, **dark green** glass, octagonal ink embossed 'HYDE/ LONDON'. Good. NR £30-40+. (MH)



- 222. WILTSHIRES EMBOSSED INK.** 2.25ins tall, aqua glass, bell shaped ink embossed 'WILTSHIRES'. Very good. NR £30-40+. (NL)

- 223. AMBER INK.** 2.25ins tall, **golden amber** glass boat shape ink with flared lip embossed 'G & R'. Fabulous colour. Very good. NR £60-80+. (NL)





229. SHOE INK. 2ins tall, 4.25ins long. Pale aqua glass ink in shape of a shoe with lace detail. Very good. NR £30-40+. (MH)



224. DAVY EMBOSSED INK. 2.5ins tall, ice blue glass, sheared lip, square ink with chamfered corners, embossed 'DAVY'. Very good. NR £30-40+. (NL)



225. BLACKWOODS INK. 1.75ins tall, aqua glass circular ink with offset neck, embossed 'BLACKWOOD & CO

LONDON' with diamond registration mark. Very good. NR £40-60+. (MH)



226. OLIVE/ AMBER INK. 2.25ins tall, olive/ amber glass, circular ink with tooled lip. Great colour. Very good. NR £40-60+.



227. BIRDCAGE INK? 3.25ins tall, pale aqua glass ink/ perfume? in shape of a birdcage. Very good. NR £20-30+. (MH)



228. PAIR OF LARGE OCTAGONAL INKS. 3.5ins tall, one dark olive green with swirls one mid

olive green with amber swirls. (2) Very good. NR £30-40+. (MH)



230. PAIR OF COBALT GLASS INKS. Both cobalt blue glass tallest 6.25ins, tapering octagonal shape with pouring spout lip. Smallest with pontil scar. (2) NR £30-40+. (NL)

231. BEWIGGED MANS HEAD INKWELL. 2.25ins tall, brown salt glazed inkwell, 2 quill holes to forehead. Good. NR £60-80+. (DD)



232. BELLOWING MAN INKWELL. 2ins tall, varying brown & pale tan salt glaze, bewigged gents head with gaping mouth & raised floral design around base. Base chip. NR £40-60+. (GM)

AFTER SALE PRICES REALISED

BBR adds sale results to its website:

sales@onlinebbr.com

alternatively find on Facebook: **BBR Auctions** or email BBR for pdf: sales@onlinebbr.com

BBR Auctions on Facebook

Auc. results, News, Updates regularly added to BBR Auctions on FB - simply befriend us!



233. TYZACK HALF BARREL INKWELL.

1.75ins tall, 3.5ins long. Tan salt glaze imp'd 'BLACK INK

FOR...PENS/
MANUFACTURES BY
TYZACK & CO/

PERFUMERS TO THE

QUEEN'. Good. NR £60-80+.



235. SALT GLAZE INKWELL.

1.25ins tall, 4ins long, oblong shape in tan salt glaze.

Good. NR £40-60+.

(DD)

234. UNNAMED HALF BARREL INKWELL.

2.25ins tall, tan salt glaze 4 by 3.25ins at base. Ink aperture & 2 quill holes to front. Base chip. NR £60-80+. (DD)



236. SHOE INKWELL.

1.75ins tall, 4ins long.

Brown glazed stoneware ink in form of a shoe, 2 quill holes to top. Good.

NR £40-60+.



237. DATED 1735 SEALED MALLET WINE BOTTLE. 7.5ins tall, dark olive green glass, applied string rim, heavy & crude base pontil. Body seal reads 'S.J.A. 1735' in script lettering. In manufacture sliver/ thread of glass "spill" attached to neck - very unusual! A bottom corner section appears to have been 'knocked off', and reglued, but it does not really detract from this extraordinarily rare form - unique?

Fabulously crude. Some insignificant string rim chipping. NR £500-600+.





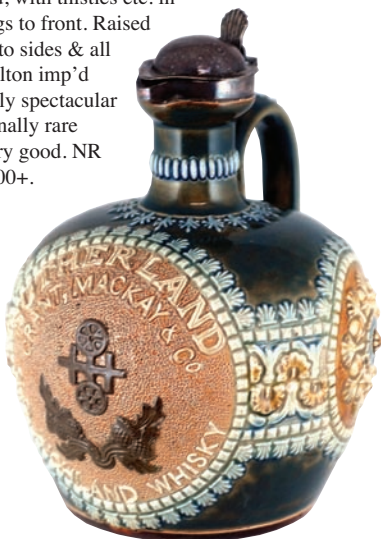
238. BIG BEN DOULTON WHISKY JUG (WG p51). 7.25ins tall, green & blue mottled glaze, brown neck & handle. Raised plaque to front in pale green 'BIG BEN/ SCOTCH WHISKY/ TEN YEARS OLD' in raised lettering. Royal Doulton circle mark lion & crown imp'd mark. A very fine example of a fairly scarce Lambeth artware whisky. Very good. NR £200-300+.



239. JAMES BUCHANAN & CO WHISKY JUG (WG p34). 8ins tall, tan neck, rear handle. Detailed large sepia transfer 'JAMES BUCHANAN & CO/ SPECIAL SCOTCH/ WHISKY'. Detailed picture of Big Ben & the House of Commons 'BY APPOINTMENT SUPPLIERS OF SCOTCH WHISKY/ TO THE/ HOUSE OF COMMONS'. Port Dundas imp'd mark. This remains one of the all time 'classic' whisky jugs worldwide - not often offered for sale. In manufacture kiln blow mark, but overall very good. NR £600-800+.

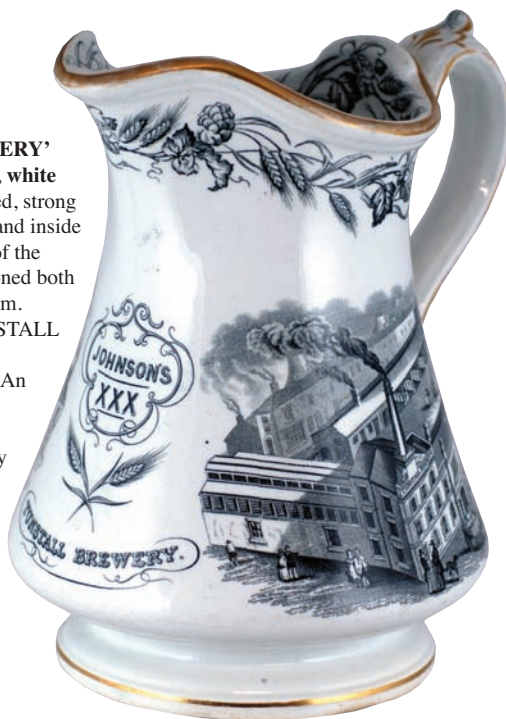


240. GRANT MACKAY & CO WHISKY JUG
(WG p82). 7.25ins tall to top of silver hinged cap, bluey green mottled artware glaze, with loads of raised decoration. 'SUTHERLAND/ GRANT MACKAY & CO/ OLD HIGHLAND WHISKY' in white raised lettering, on a stippled matt salt glaze background, with thistles etc. in brown sprigs to front. Raised decoration to sides & all round. Doulton imp'd mark. A truly spectacular & exceptionally rare whisky. Very good. NR £,1200-1,500+.



241. 'TUNSTALL BREWERY'

LARGE JUG. 8.25ins tall, **white glaze.** A very highly detailed, strong **black transfer all round**, and inside the rim too. Large images of the brewery premises, emblazoned both side, hops & vines below rim. 'JOHNSONS/ XXX/ TUNSTALL BREWERY'. Coat of arms Elsmore & Forster to base. An exceptionally rare and important offering - these jugs just do not turn up very often. Stable, small, insignificant hairline under body near base. NR £1,200-1,500+.



BBR Unreserved Auction Saturday 31st January

Blg 21 doors open 9^{am}, sale starts @ 11^{am} **A very big sale!**

EVERYTHING sold as seen sale day. Items collected after payment, anytime during sale. Absentee bids taken, additional accurate condition reports prior are very problematic due to storage.

*Provenance initials in brackets: KB = Kevin Boyle, GM = Garth Morrison, IM = Ian McKenzie
JR = John Rowe. CM = Chris Mortimer. DD = Dudley Davidson, AB = Alan Blakeman.*

FINAL SAT LIST (lots more pic. & extra lots - just email: sales@onlinebbr.com or on Facebook 'BBR Auctions' or off BBR's website: www.onlinebbr.com

1. Dated brown glazed stoneware spirit barrel, coat of arms to front 'Prince of Wales Nov 9 1841' imp. below (GM)

2. Charringtons pub jug 'Toby Stout Charringtons' toby jug pictured. Doulton p.m.

3. North & Randal Aylesbury blue top g.b.

4. Clarkes Ammonia aqua glass bottle embossed vertically 'Clarkes Clear Fluid Ammonia'

5. 6 night lights, all wire net embossing, 2 cobalt, 2 amber, 1 green & 1 clear glass

6. Small dated stoneware barrel imp. 'M Carboli 1864'

7. Burgh-Le-Marsh (Skegness, Lincs) octagonal based codd bottle, aqua glass embossed 'John Hill/ Irby/ Burgh-Le-Marsh'

8. Batty & Co patent mustard blue shouldered jar 'Makers high class pickles, sauces etc...' (CM)

9. Pr Buttercup cream pots, blue top, blue transfer 'Buttercup Cream' cow & milk maid pictured.

10. Enamel sign double sided 'Pratt's/ Perfection/ Motor Spirit' black & red lettering on yellow background.

11. Norwich & Yarmouth g.b. 'Back & Co Wine Merchants Home Brewed Ginger Beer/ Norwich & Yarmouth'

12. Alnwick g.b. 'the Alnwick/ Home Brewed Ginger Beer/ Brewery co Ltd'

13. Lrg mix bottles grp inc: 4 g.b.'s, amber Leigh & co codd, 10 codd bottles, Gateshead, London, Staines etc. + 2 green poisons

14. Grp Waterford bottles, 3 aqua glass beers 'The Borough Mineral Water Co (2) + E. Ridehalch & Sons + clear glass swing stopper bottle (4)

15. 5 Padiham bottles beers & mineral waters

'A.W. Co Ltd' & Monks Aerated Waters' (bullet stopper)

16. Mix grp beers & minerals: Todmorden, Blackburn, Oldham, Barrowford, Accrington, ramsbottom & Rossendale (9)

17. 2 N.E. beer bottles 'North Eastern Breweries Blackheath & Sunderland' pictorial + 'Joseph Wilkinson Gatehead & Sunderland (Ayres Quay Bottle co) (2) (KB)

18. Pr of 'Ross & Co/ Doctors Stout Newcastle on tyne' man on penny farthing pictorial (KB)

19. Pr N.E. beer bottles 'John Davison/ Gateshead' + 'Davidson & Wood/ Gateshead' (KB)

20. 2 Newcastle stout bottles 'Ridley Cutter & Firth Manor Brewery Newcastle' + 'John Fitzgerald Darcy's/ XXX/ Invalid Newcastle on Tyne' (2) (KB)

21. Stout bottle 'Brampton Old Brewery/ Extra Stout/ Brampton Cumberland' beer barrels pict. t.m. (KB)

22. Bradford g.b. 'Milnes & Son/ Undercliffe Bradford' boy on donkey pict. t.m.

23. Pr of Newcastle beers 'Ross & Co. Newcastle' + 'James Deuchar Limited Newcastle upon Tyne' (2) (KB)

24. 'Moerleins/ Old/ Jug Lager Krug Bier' cherubs pictorial (KB)

25. Mix bottle grp: Warners Safe Cure, Tippers poison, Lysol poison, Koosh Bitters, labelled chlorosyl bottle, blue Owbridges Lung Tonic + 4 poison bottles (19)

26. Mix bottles grp: mainly poisons cobalt, squat hobnail, 3 ammonias, amber phenyle poison, Vapo Cresolene with bottle, cream jug & 3 poison bottles



Group of round based mineral patents lots 347 to 351

27. Guinness grp: 2 harmonicas, 3 Lilliput Guinness bottles, Private pool in packet, Irish porcelain covered box & brown glazed flask
28. 5 toby jugs, Black & White Scotch Whisky ashtrays + cobalt blue eyebath
29. Mix pottery grp: toby teapot, 2 condiment sets, 2 glass cased decorated eggs, gypsy caravan covered dish + 8 plates etc.
30. 2 ceramic Royal Albert telephones, pair of binoculars + bronze style figure of a fisherman, 3 horse brass Martingales etc.
31. **Naviati Extra Cigarettes covered circular box green transfer**
32. **The Balkan Sobranie Cigarettes covered rectangular box, black transfer**
33. 'Imperial Coraline Tooth Paste' rectangular lid & base (repaired)
34. **'James Atkinsons Bears Grease 24 Old Bond Street London Price 2/6' pot lid**
35. Pr of Woods tpthpaste pot lids & bases one with pink transfer
36. 'Oriental Toothpaste prepared by Jewsbury & Brown' lrg size lid & base
37. 2 Cold Cream pot lids & bases one with hairline
38. Pr of John Gosnell Cherry Toothpaste pot lids green & bronze
39. Holloways ointment pot
40. Pr of Anchovy Paste pot lids 'Crosse & Blackwell' & 'Army & Navy Cooperative' (2)
41. 'Fortnum & Mason Limtd Chicken & Ham/ 182 & 183 Piccadilly. W.' lrg pot lid & base
42. 'W & G. Buszard/ Bride Cake/ Manufacturers/ And Confectioners/ 197 & 199 Oxford St London W' pot lid & base
43. **Brown glazed preserve jar imp'd p.m. 'J. Bourne & Son Patentee Denby Pottery Nr Derby 1868'**
44. **Brown glazed bottle imp'd p.m. 'Bourne & Son Patentee/ Denby Pottery/ Nr Derby 1870' (GM)**
45. **Stoneware blacking jar imp'd 'Blacking Bottle'**
46. **Brown glazed blacking jar imp'd 'Blacking Bottle' (GM)**
47. **Brown glazed blacking jar imp'd 'Midland Railway'**
48. 6 cream pots (2) 'Hailwoods' + (2) 'Boams Manchester' + 'Robinsons Seedley' + 'Manchester Creamery Broughton'
49. Guinness vehicles grp: vans, lorries, bus
50. Guinness ashtrays: 2

- tin, 1 plastic, 4 ceramic plus Irish drum (8)
51. Guinness badges, keyrings, mini bottle etc.
52. Guinness grp: double egg cup, tankard, fridge magnets, candle etc. (10)
53. Guinness 3 rectangular tin trays, zookeeper & ringmaster etc. (3)
54. **Guinness toucan lamp**
55. Guinness grp: covered dishes featuring zookeeper & animals
56. Guinness condiments, 2 salt, 2 pepper & mustard
57. Guinness grp: mug, illuminating bar top glass & 2 glasses
58. Guinness grp: 3 covered dishes 2 with Dickens scenes one with toucans (3)
59. 4 Guinness rectangular tin trays 'Guinness for Strength' + zookeeper & lion + toucans tray + bull and farmer pict. (4)
60. **Guinness rectangular tin tray 'Game for a Guinness'**
61. Tins grp: Thornes, OXO, Bulwark plug + box of Columbia needle tins + MATCHbox car etc. (8)
62. Huntley & Palmer lunch box tin + Guinness brush set, Thornes Toffee tin, Old Holburn + tin plate etc.
63. Grp Carlisle mineral water bottles factory & Queen Victoria pictorials etc.
64. Grp marmalade jars 7 Frank Coopers Seville Marmalade + James Keiller Dundee Marmalade
65. Brass ware grp: kettle & stand, 2 pr of candlesticks + pr wall pockets + peg boards etc.
66. 'Henry Heath Ltd Hat Makers to his Majesty the King' showcard
67. Mix grp: 2 pr brass candlesticks, copper bed pan, brass jug, stand, pr butter pats, money box & chamber stick etc.
68. Grp of flat irons (4) goffering iron, iron stand, early iron, veg chopper, hobbing foot + trivet set etc.
69. 2 copper bar drip trays, printer tray + Bovril metal sign, framed Schweppes advert, scrap album + telephone enamel sign
70. 6 walking sticks
71. Wooden yoke & copper hunting horns + 2 wooden poles

72. Mix grp: lrg glass cover, teapot, flagon, brass candle holder & glass shade + 2 glass sticks etc.
73. Pr blue glazed Chinese dogs of Fo
74. Doulton Improved Footwarmer Lambeth Pottery London



75. Doulton figural 'Wee Willie Winkie' + King Richard Bunnykin figure
76. Pewter inkwell + Cornish ware storage jar 'Custard powder' + teapot stand, Torquay ware ashtay + Wade port barrel (5)
77. Cornish ware 'Flour' shaker
78. Cornish ware 'Sugar' shaker
79. Cornish ware 'Salt' shaker
80. 'Buttercup Cream' cream pot, blue top, blue transfer
81. 'Buttercup Cream' cream pot, blue top, blue transfer
82. 'Buttercup Cream' cream pot, blue top, blue transfer
83. 'Brown & Polsons Blanc-mange' mould + 'Harrods Prize Dairy Stilton Cheese' jar (2)
84. 'S.H. Ward & Co Renton St Sheffield' g.b.
85. Set of kitchen scales & weights + enamel flour bin + 5 Cornish ware domino dishes, E.R. money box tin & Bluebird tin
86. 'Firths Darlington Brewed Ginger Beer' blue transfer g.b.
87. Mix bottles grp: 2 glass g.b.'s, 3 cobalt castor oil one labelled, green chemists round, bullet stopper (Preston) + 2 Preston beers (10)
88. 6 whisky jugs 'Ballantine' (2) + 'Kings Ransom' + Long John etc. (7)
89. Early Bakelite telephone, black for wall hanging
90. Early black Bakelite telephone + 'Delta' powerlite lantern (2)
91. Pratt style Staffordshire jug, seated gents in relief drinking 'Willie Brewed A Peck O Maut'
92. 6 pub jugs: Johnnie Walker, Ind Coope, Gordons Gin, Take Courage, Buchanan, Arthur Bell (6)
93. 4 pub jugs: White Horse (2), Black & White Whisky, Jameson + stoneware tankard + Blue Stilton churn shape jar (6)
94. 6 pub jugs: Johnnie Walker, Whyte & Mackay, Scottish Leader + Rocket Brand Laphroaig (6)
95. 6 pub jugs: Beefeater, Teachers, Lamplighter Gin, Old Buchmills, teachers + Dewars
96. Pr 'White Horse Scotch Whisky horse figures (2)
97. Cruiskeen Lawn/ Mitchells Old Irish Whisky/ Belfast' whisky jug + Cherry Brandy jug (neck damage) (2)
98. Fulham spirit flask 'Stansfield & Co/ Wine & Spirit Merchant/ Fulham' in black lettering
99. Mix grp: (2) Fish Brand bottles + 2 cream pots, 3 aqua glass inks, imp. g.b., potted meat pot, blue glass soda syphon (top broken) etc. (13)
100. 'Wills's Gold Flake Cigarettes' mirror
101. 'Worthingtons Pale Ale Brewers by Appointment to H.R.H. Prince of Wales' mirror
102. 'Malonys Irish Whiskey Distilled in Dublin' mirror
103. 'Colmans Mustard by Appointment to H.M. The King' mirror
104. 'Ind Coopes Burton Ales' mirror
105. Frosted glass car mascot? (Lalique style) in shape of a budgie
106. Figure of black gentleman, bulbs for his eyes battery operated
107. Cast iron money bank horse & horseshoe shape 'Tally-Ho Bank'
108. Framed oval fishing flies
109. Framed sports caps 'St Ronans' (Kent)
110. Grp framed prints Johnnie Walker Certificate, Illustrated London News dogs print, Railway Map + water colour sea scape (4)
111. Mix grp: Pewter inkwell, 'Cantrell & Cochrane' glass matchstriker + Sunlife Branch Office Portsmouth matchstriker + Leeds matchstriker (4)
112. Mix grp: Metal ear trumpet, boxed scales, wooden lace bobbin, money box 'President from Scarboro', paperweight & drip tray etc.
113. Gladstone style leather bag
114. Mix grp: cased cigarettes holders (3) + 2 specs in cases + 2 snuff boxes (7)
115. Mix grp: (3) cased cigarette holders specs in case snuff box + vesta case (6)
116. Grp boxed airfix model kits mainly vintage cars + Speedway motor cycling race game (12)
117. Cigar wooden display case 'Cigars' to glass front with cigar packets + cased display of Citroen cars & vans (2)
118. Boxed Sutcliffes 'Sea Wolf' sumarine
119. Mix grp: Matbox series roadway layouts + 5 Imperial Hotel Darlington price lists + Safety First road game + Touring England Map game
120. Cricket book 'Norman Yardley Cricket Campaigns' + Cricket ball trophy + wooden book stand + flag piccadilly cigarettes 10 for 4D/ 15 for 6D + framed dog print + Vintage cars photographs (6)
121. Mix grp: Wooden shuttle & mags, peg board, Daily Mail 1st WW map, Books the World fighting planes, Collins motor annual, Cooks Toursthe story of popular travel + boxed Corgi Bryant & Mays delivery vans
122. 'Teachers Whisky' lrg pub mirror
123. 'William Youngers India Pale Ale' lrg pub mirror
124. 2 Grimwades storage jars: Tapioca & raisins one with lid (GM)
125. Thornes food warmer + Ovaltine mixer + stew jar (GM)
126. Mix lot: Monk figure + Le The Patent Lavatory Fittings soap disk + Woods 6d pot lid + 2 brass lady bells + egg cup + pewter metal covered dish etc. (GM)



127. Night light shade & stand + Clarke's Pyramid night light stand + 'Stephens Jams' preserve jar & lid (geese pict.) (GM)

128. 3 clay pipes + pottery marbles + 3 figures, doll etc. (GM)

129. Cut-glass perfume bottles + 'Poisonous' small bottle + mini babyfeeder

130. Brass jam pan + ceramic mixing bowl

131. Pratt ware jug: Seashells design (GM)

132. Copper plaque 'Gentlemen are kindly requested to discharge their weapons before entering this establishment' (GM)

133. Jug brown top matt white body with raised figures, grapes & vines etc. 'John Turner lane End London 1770-1806'

134. Brown glazed stoneware jug, greyhound handle with raised motifs

135. Grp Ophthalmic items: Orlon microscope + reichert stage micrometer Imm-100 + P.T.I screw micrometer + Swift camera Lucida + Netzmicrometer drawing aid + Pria 1/6" objective NA.70

136. Ceramic chemist round 'Syr: Cardiac:' with stopper

137. Ceramic drug jar 'Cera/ Alb'

138. Lrg salt glaze snuff jar waisted shape with twin handles

139. Green glass rectangular ribbed poison bottle with stopper + Satinoleum bottle 'James Rudman Bristol' + labelled mixed pickle jar (3)

140. Brown glazed mermaid flask (restored) + book 'English and Irish Glass' by Geoffrey Willis (2)

141. Doulton ashtray. blue glazed 'Borough of Camberwell'

142. 2 Schweppes willow pattern ashtrays

143. Oriental teapot square shape, white glaze with blue raised decoration lizard/ dragon handle, diamond registry base mark (GM)

144. Lrg pancheon bowl + lrg crock

145. Bolton flagon transferred 'J.W. Deakin/ Herbal Brewers Bolton' with a further 7 lines below

146. 2 Burnley flagons: 'Dugdales Beverages Burnley' + 'E. Eastwoods Famous Herb Beverages Burnley'



147. 2 flagons: 'James Simpson Hebden Bridge' + 'J.W. Ramsbottom Herbalist Rawenstall' (2)

148. 2 flagons 'Thomas Hill Botanical Brewer Waterfoot' + 'Elliot's Albert Works Cook

St Bury'

149. 2 flagons 'J.T. Yould & Sons Ltd Blackpool' + small imp. flagon 'J. Strickland Brewer Wine & Spirit Bolton'

150. 2 pub mirrors: 'James McGregor Highland Whisky' + 'Brown & Polson Patent Cornflour' (2)

151. Mix lot inc: Mirror, glass bowl, vase, Westerwald jug, lemon squeezer, glass vase, wooden figure, set of scales etc.

152. 2 Poole pottery plates + Wade Royal Victoria plate + 2 others

153. Mix lot inc: Beswick Jemima Puddleduck figure + Wade starfish dishes + wooden covered bowl + Poole gravy boat etc.

154. Brass candle sconces + corkscrew + wooden coat peg rack

155. Shelf pottery flower vase + Tiffany style lamp shade + clear glass basket + lrg artware charger

156. 2 cream pots 'Murgatroyds Baildon Dairy Farm' + 'Murgatroyds Rich Cream Baildon'

157. 4 cream pots: (2) 'Dunragit' + (2) 'Galloway Stranraer'

158. Poison grp: lrg cobalt hexagonal + lrg green flat back hexagonal, cobalt flat back hexagonal & amber rectangular (4)

159. 3 ink bottles: dark green octagonal, blue square ribbed & blue boat ink

160. Pr of 'Burgess's Genuine Anchovy Paste' pot lids

161. 'Minimax AD Patent No 1882 & 130 505/ 18'

blue glass fire extinguisher

162. 2 bitters bottles 'Dr Soules Hop Bitters 1872' + 'Dr J Hostetter's Stomach Bitters'

163. Pr of 'Breidenbachs London' toothpaste pot lids

164. Rectangular glass paper weight 'White Horse Whisky Mackie & Co Distillers Ltd'

165. 2 Bovril jars, one dark green one amber glass

166. Saml Clarke's Pyramid food warmer white glaze, black transfer (chip to lid)

167. Pr blue top g.b.'s 'E.E. Bevan Neath' + 'H. Wise Reading' (2)

220

168. 2 Reliance Patent Codd bottles 'M Whittaker Matlock Bath' + 'J. Edmundson Blackburn' +



195. 6 pub jugs: Jameson, Ballantines, Scottish Leader, Dewars (2), Black & white

Premier Patent 'L.C. & C.H. Co' (3)

169. Ribbed Reliance Patent Codd bottle 'W & G Roseveare Barnsley'. V good (GM)

170. 3 codd bottle: (2) aqua glass 'Groves &

Whitnall Salford' + Reliance Patent 'Butterworth & Blackburn Ramsbottom; + cylinder bottle 'Spencer Connor & Co Manchester (GM)

171. Mineral water bottle 'J. Kershaw & Sons/ Gateshead' 2 circular indents to rear A10 patent?

172. 4 g.b's: Taylors Hop Bitters, S Speak Clitheroe, Manchester & Salford imp'd

173. 3 cream pots: 'Carricks Cumberland Dairy Co Ld Thick Cream Low Rows Aspatria' blue transfer

174. 3 cream pots: 'Wigtownshire Creamery Stranraer' inc. (2) sepia transfer versions

175. 4 cream pots: 'Pure Rich Cream from the Huntly Creamery' 3 brown tops + all white version

176. 3 cream pots 'Hammerley's Creamery Broughton' blue transfer

177. 10 Leeds pub flasks embossed 'Prince Arthur Roundhay Road Leeds'

178. Railway crossing metal sign 'Crossing/ No Gates' steam loco pictured

179. Early lrg flagon brown glazed imp'd 'Abbot & Holloway'

180. The Greybeard Whisky jug. Heatherdew Whisky Mitchell Bros Limited Glasgow

181. Guinness grp of vehicles, vans, lorries etc. (7)

182. Guinness badges, keyrings, mini bottle etc.

183. Guinness grp: money box, glass, fridge magnet, pens, gavel, golf ball + Its Your Round glass etc. (11)

184. Guinness tin trays, 3 rectangular, zookeeper, ringmaster, Guinness is Good for You

185. 3 Guinness covered dishes, one with toucans one with zoo animals one with verse

186. Guinness grp: 2 mugs, jug & basin

187. Guinness lamp, toucans to base & shade

188. 4 Guinness rectangular tin trays 'Guinness - Him Strong' + Guinness for Strength' etc.

189. Guinness trays, 2 square & circular

190. Guinness grp inc: figure, clock & digital clock

191. Guinness mirror + 2 plastic trays, rectangular tin tray & circular tin tray

192. Guinness circular tin trays

193. Carlisle bottles grp, some with factory & Queen Victoria pictorials + lrg G. Ismay Carlisle flask etc.

194. 6 pub jugs: Bels, Worthington E, famous Grouse, B.L. Whisky Tadcaster Tower Brewery

196. Woodbines metal sign 'Best of All- Smoke Woodbines' red & black lettering on yellow

197. 4 whisky jugs: Old Rarity, Ballantines (2), Lambs Navy rum

198. Leyton & Becontree flagon + 2 whisky jugs 'tullamore Dew' + 'john Campbell' + Green & Ledicott g.b. + Napoleon Brandy decanter (5)

199. 8 Bells decanters: Queen Mother 90th Birthday + Princess Beatrice Birth + 6 unusual decanters (8)

200. 4 g.b's: Poole Clayton-Le-Moors + R Wylie Clayton-Le-Moors + Daniel Thwaites Blackburn + Cottons Blackburn

201. 3 g.b's: William Coup Albert Hotel Hebden Bridge + W Spencer Sowerby Bridge + Richard Stocks Halifax

202. 3 g.b's: Westwell & Hague Blackpool + Cow Gape Lane Blackpool + I Standing & Co Rochdale

203. 7 g.b's: Leigh & Co Salford + (2) I. Standing Rochdale + H. Firth Manningham + E.P Shaw & Co + R Taylor Milnrow + T. Moor Accrington

204. Pair Blackpool g.b's 'E.L. Newson Ltd Blackpool'

205. Pr of Burnley flagons 'Dugdales Beverages Burnley' + 'E. Eastwoods Burnley'

206. Pr of flagons 'J.T. Youd & Sons Ltd Blackpool' + 'J. Strickland Nelson'

207. Pr of flagons 'Elliotts Albert Works Cook St Bury' + Thomas Hill Botanical Brewer Waterfoot'

208. 5 ointment pots: (2) Holloways Ointment + Clarkes Salve + Beach & Barnicott + Boots

209. Pr Johnnie Walker Scotch Whisky pub jugs square shape James Green & Wade p.ms

210. Burgess's London Anchovy Paste barrel shape pot

211. 2 pub jugs: red glaze 'Haig' + 'Jameson Crested Ten'

212. Pratt lid & base 'Uncle Toby'

213. Pratt lid & base 'Hauling the trawl'

214. Pratt lid & base 'The Seven Ages of Man'

215. Holloways Ointment 2s 9D pot lid. V good

216. 'Mrs Ellens Hales Celebrated Heal - All Ointment' pot lid

217. Pr of Boots pot lids toothpaste & cold cream

218. Pr of toothpaste pot lids 'S Maw Son & Thompson' + 'S Maw Son & Sons'. Good

219. Areca Nut Toothpaste square pot lid

220. 'White Rose Paste S. Maw Son & Sons London' square pot lid. V good

221. Pr 'Woods Areca Nut Toothpaste' pot lids 1s & 6d size

222. Pr toothpaste pot lids 'Cherry Toothpaste' + 'Areca Nut Toothpaste'
223. 16 cobalt blue glass hexagonals + rectangular poisons castor oil square & flask shape etc.
224. 11 green glass bottles: poison + Crown Perfumery, Godfreys Inhaler, Dr Struves Mineral Water + Liquefruta Cough Cure etc.
225. 4 cream pots: Strathbogie Dairy, Hammersleys Creamery, Wigtownshire Creamery Stranraer & Lancashire Hygenic Dairies
226. Mineral waters grp: 3 coddts, 'H. Greenwood Birmingham', (2) 'Laycock Chester' + 'Brampton Old Brewery Brampton' & flat bottomed hamilton + hamilton
227. labelled Lyons ink bottle + Aberdeen sauce + blue sauce (bird t.m.) + labelled bottle ginger stout (4)
228. 14 glass inks, square, round, boat, octagonal
229. BP Plus advertising record 'Aeroshell Lubricating Oil'
230. Amber glass bottles: poisons B.W. Hair Asthma Cure, Jeyes Fluid, Vilixir, Boots Chemists etc. (12)
231. 3 g.b.'s: Lawrence & Sons Gt Yarmouth, S. Western Mineral Water Co Ltd Bournemouth & imp'd Hulme
232. Bottle grp: amber 'Prince of Wales 1929 Bass' + Tunbridge Wells beer, case gin Louis Meews Anvers + wine bottle etc. Good
233. Lrg salt glaze porter bottle + Ervenlucas Bols Amsterdam imp'd salt glaze bottle. Good (2)
234. **Strathbogie Dairy Huntly cream, blue transfer**
235. 3 circular glass paperweights: Daily Mercury, Salamander Decorations London + Northern Assurance Company
236. 5 aqua glass inks, unemboosed cottage, barrel, round tiper, octagonal tipper & sml cottage
237. Lincoln porter grey/ green glaze imp'd 'Morton Handson/ & Turton/ Lincoln'
238. **Dewars Whisky Doulton jug, green top, lower tan salt glaze 'Dewars Whisky' in white raised lettering. Doulton p.m. Good**
239. Maws Cold Cream pot lid 'Otto of Rose Cold Cream/ S. Maw Son & Sons London'
240. C.W.S. Ltd cream pot, churn shape 'Rich Thick Cream/ CWS Ltd Brislington/ Somerset'. Good
241. Spode commemorative ceramic decanter 'Coronation of King George Vth Queen Mary June 22 1911/ Andrew Usher & Co Distillers Edinburgh' green & white glaze, no stopper
242. **Leeds cream pot 4ins tall, all white 'Provincial Dairies Limited Leeds'. Good**
243. Wrexham g.b. 'Wrexham's Fermented Stone Ginger Beer' goat pict. Good (NL)
244. Porter bottle imp' 'Pier points/ Bottled Porter
245. **Yorkshire cream pot. 3.5ins tall, blue transfer. 'Escrick Park Dairy/ Yorkshire'**
246. **'Dr Barnados Homes' cottage shape money box (JR)**
247. Aqua glass horizontal barrel ink
248. Pub jug, blue & white floral design transferred 'Grants 'Stand Fast"/ Whisky'
249. Pr Schweppes dumpy seltzers amber & green glass
250. 6 inks: cobalt square ribbed, green square ribbed, pale amber, green & aqua octagonal + square
251. Preston sealed ginger beer bottle, horse pictorial
252. Diamond registration embossed cobalt blue square shaped ink, Good
253. Wellingboro green glass g.b. + flat bottomed hamilton amber glass 'The New Colombo Ice Co' elephant pictorial (CM)
254. Commemorative tin coronation souvenir June 26th 1902 with 4 commemorative medals
255. **Coin collection, 14 crowns + commemorative coins etc.**
256. Cold cream pot lid 'Ch. Jaschkes/ Cold Cream 52 Regent St London W'
257. Ilkley cream pot 'Kiosk Cafe/ the Grove Ilkley'
258. Pub jugs, beer mats + mini Kingsware (damaged)
259. 3 pub jugs: Haig, Buchana Black & White Whisky + Chivas Regal
260. 7 pub jugs: (5) Glenmorangie + China Fernet, Salytre Scotch Whisky + ashtray
261. 14 ashtrays: Fosters, Carlsberg, Wm Youngers, Suntory Whisky, Courage etc.
262. 3 postcard albums, scrap book, printing outfit + basket
263. 2 cricket bats, printers tray & wooden board
264. Bagatelle game, cricket bat + framed poster Theatre Royal Bristol
265. **Shell motor oil advertising mirror**
266. Grp of motoring posters + framed advert - Stotherts Atherton
267. Framed newspaper 'Daily Dispatch Friday April 26 1940'
268. 2 flagons: Watt & Fergusson Rotherham + Wm Shaw Barnsley
269. 2 flagons: Ridgway Bros Fenton + Jones & Sons Hanley
270. 2 flagons: I.W. Ramsbottom Rawtenstall + James Simpson Hebden Bridge
271. Pratt lid & base 'The Shrimpers'. Minor nibbles
272. **Pratt lid & base 'The Game Bag'. Good**
273. **Pratt lid 'Royal Harbour Ramsgate'. Good**
274. **Pratt lid & base 'Contrast'**
275. **Pratt lid & base 'The Times'**
276. Pratt lid & base 'The Fisherboy'. Sml flange flake
277. 5 framed multicoloured advertising inserts: Sunlight Soap, Plantol Soap, St Jacobs Oil, Gilbert Raes, Roots Cocoa card adv

278. 6 framed multicoloured advertising inserts: Swan Soap, Clarks Oint, Sunlight Soap, Harness Electric Corsets, Frys Cocoa, Edwards Harlene
279. 2 g.b's: Binnington & Co hull + Hckton Nottingham
280. 2 g.b's: Swan Beverages London S.W. + Thomas & Evans Porth
281. Boots Hygenic Inhaler + Buttercup Dairy Co cream pot
282. 4 pictorial beer bottles: Fletcher & Holt Manchester
283. **6 pictorial coddys: William Hill Llandudno**
284. Doutlon rum barrel brown & tan salt glaze with brass tap
285. Poison bottles grp: cobalt blue glass, hecagonals, rectangular & cyliner (17)
286. Mix grp: g.b's, jar, ink bottles, ammonia, hamiltons etc.
287. Lrg mixed grp: bottle collecting books, matchstrikers, ashtrays, tins, invalid feeders etc.
288. Lrg grp of pot lid bases
289. Cherry Toothpaste pot lid & base 'Buisson Freres London & Paris'
290. 2 pot lids: Atkinsons Rose Cold Cream + Boots Cold Cream
291. F.S. Cleavers Areca Nut Toothpaste pot lid & base
292. 2 pot lids: Jewsbury & Brown Oriental Toothpaste + Calverts Carbolic Toothpaste
293. 2 pot lids: Atkinsons Rose Cold Cream + Cold Cream with base
294. Southport, Bradford, Sainsburys bloater paste pots + Searcys Oriental salt (5)
295. Army & Navy Cooperative Ltd Cold Cream of Roses pot lid & base
296. Cherry Toothpaste square pot lid & base
297. 2 Burgess's Genuine Anchovy Paste lrg & sml pot lids
298. 2 pot lids: 'Patey & Co Perfumers Superior Cold Cream 37 Lombard St London' + Cold Cream
299. Symons Devonshire cyder ash bowl with brass cigarette rest. V good
300. 2 pub jugs: Have A Capstan, cream glaze blue print + Players Please dark blue & pale blue glaze
301. **Tin plate battleship makers Arnold made in U.S. Zone Germany with box**
302. Dinky toys: Mayo Composite Aircraft, Mercury seaplane + 4 engined flying boat, both boxed
303. **Wooden shop counter till**
304. **Leather covered writing slope with key**
305. Tins grp: Rileys toffee, C.W.S. biscuits, Virol Toffee, OXO, Pontefract Cakes, Libbys, rumpsall biscuits



304

306. Crested ware vintage car, petrol can (3) vintage car models RAC jug + (2) Hackney carriage metal signs
307. Small adverts grp: hydes hygenic dog cakes, Peerless Erasmic soap, Californian Poppy Devonshire Violets, photos, vintage car stickers
308. Mix grp: Bicycle lamp, (2) AA car badges, 4 glass slides, glass paperweight, set of brass weights,

Players tea towel etc.

309. 1960's motoring booklets: The Wonder Book of Motoring, leather framed photograph, autograph album & coat of arms book
310. Lrg grp of brass & copper pans, ladels, trivets, beg board, plaque, jug etc.
311. Set of carpet bowls, wooden bowl, motoring badges, tyre ashtray, mixer, flag, apple corer etc.
312. 2 wood & brass pill rollers, 2 Indian clubs, vase, motoring smock, Lurpack egg cups & Denbydale pie plate etc.
313. Grp of games etc: draughts set, dominoes, tiddley winks, framed motoring print, Sunlight Soap book, The Pickwick Club book & leather case
314. Corgi boxed Mobil Gas Lorry + Weetabix Lorry, Scammell Truck, (4) Promotional boxed vans & model car books & magazines
315. Matchbox boxed vans & lorries, Corgi boxed double decker bus + other model cars & Cliff Richard tapes etc.
316. 10 boxed Days Gone by vans & cars & lorries
317. 10 boxed Days Gone by vans, cars & lorries
318. 10 boxed 'Models of Yesteryear' 'Classic Cars' 'Tetley' 'Days Gone By' vans, lorries etc.
319. Boxed Harrods set, boxed Northern Dairies + Models of Yesteryear, Oxford Diecast, (2) Walkers Crisps Vans, Blue Bird car (8)
320. 12 boxed vans, lorries & cars Days Gone By + Lledo etc.
321. 11 boxed cars, lorries, vans Days Gone By & Oxfrod Diecast
322. 11 boxed vans, cars, lorries Days Gone By, tetley & Cameo Collection
323. 12 boxed buses, lorries, vans, cars Matchbox & Corgi
324. Boxed Corgi 'The Queen Mothers Century 1900-2000' + glass E Type Jaguar & stand + Corgi Volvo container truck (3)
325. Boxed 1940 Ford Deluxe Coupe + boxed Volkswagen New Beetle 1998 + 2 boxed Days Gone Exidevan & Heinz Lorry
326. Boxed 1940 Ford Deluxe Coupe + boxed 'Heartbeat' + boxed Matchbox Superkings + News of The World van + promoters van

362



363



371



327. Boxed Models of Yesteryear 1929 Scammel 100 ton trailer & locomotive + passenger coach & horses c.1820 + 1920 Rolls Royce armoured car (3)

328. Boxed vans & lorries 'Eddie Stobart' Armley Mills Matchbox Superkings 'Days Gone' (5)

329. Lrg cheese dish & cover + glass chicken dish, Masham Brewery mug + Spongeware cup + crested china mug 'Buxton' + OXO mug

330. God Speed the Plough loving cup + Annie Learns how to Charm the Cream loving cup + blue & white lidded mug + chicken dish + invalid feeder blue & white Adams mug

331. National Benzole Mixture lrg flag + tyre ashtray, oil can, 5 ties, Rover & MG head scarfs + beer mats & money bags

332. Brass jam pan, iron well lamp, railway lamp

333. 2 brass jam pans + iron circular frame

334. 4 framed adverts: Pears Soap, Frys Cocoa (2), + Robinsons Patent Groats

335. 4 framed adverts: Pear Soap, Birds Custard, Folly & Sons Launceston + Pears

336. Mix grp: pair of brass candlesticks, blue & white willow pattern plate, brass bell, brass plaque, vegetable cutter, kitchen utensils, candle snuffer etc.

337. Mix grp: 2 pair of brass candlesticks, copper jug, copper conical jug, veg chopper, wooden mallet, horse brasses etc.

338. 5 pub jugs: Minster minerals, Glenmorangie, Tennents, The Famous Grouse & Horlicks

339. Pottery grp: Wesleyan Sunday School Batley mug, cricketer plaque, shaving mug, Glossop Loving Cup, Manchester Jubilee 1867 jug (6)

340. Pottery grp: cheese dish, German stoneware tobacco jar, preserve jar, pair of figures & vegetable extract pot etc. (11)

341. Guinness condiment set, Guinness rugby balls + pub jugs, ashtrays etc.

342. Bulk lot medicines, sauce bottles, pub flasks etc.

343. Bulk lot pot lid bases rectangular & circular

344. Bulk lot mainly blacking jars

345. Bulk lot stoneware mainly ink bottles

346. Bulk lot stoneware mainly ink bottles etc.

347. Pool patent stopper bottle, aqua glass round bottomed cylinder embossed Pool Patent Stopper Mineral Water Co (GM)

348. Round bottomed codd bottle, aqua glass embossed 'James Goddard Pooley Hill' Lancs Ashton-u-Lyne (GM)

349. Round bottomed Chapmans Patent rubber ball stopper embossed 'Matthew Pomfret Bury' to front 'Chapmans Patent' etc. to rear (GM)

350. Wooden stopper hamilton type bottle, aqua glass embossed 'W. Preston & Co Liverpool & Stanley St Southport' Nuttal & Co Makers (GM)

351. Round bottomed octagonal base codd bottle embossed 'W. Collyer Nottingham' 'Cods Patent 4 London' to rear (GM)

352. 2 flagons 'Hawkes & Co Thames Ditton' + 'Minister Bros Ipswich'

353. Lrg bottle of 'Moscatel Carmelitano' with contents + flagon + 2 jars

354. 2 flagons: 'The Victoria Wine Co' blue transfer + Packman & Co Ltd Croydon

355. Matchbox 'Hero City' boxed police station, cars + Corgi Classics Brewery collection + boxed open Sedan + Matchbox 'Priest' tank

356. Matchbox (4) 75 series boxed van, car, lorries + 3 Matchbox boxed van & cars + mini & Diecast mags etc.

357. Matchbox (7) boxed vintage vehicles + boxed 75 series lorry + Mcvities van (9)

358. Matchbox (4) boxed vintage vehicles + (2) 75 series model A. Ford + passenger coach + Milky Bar bus

359. Matchbox (5) boxed vintage vehicles + (2) 75 series diesel shunter + helicopter + Matchbox Silver Jubilee bus (8)

360. Corgi classics (4) boxed coaches + Matchbox 10 pack starter collection (5)

361. Boxed Corgi Eddie Stobart truck + Corgi boxed 'Faulty towers' + Matchbox boxed 1922 Scania Post bus + (6) Matchbox cars & vans etc.

362. Royal Doulton plate motoring series entitled 'Itch Yer on Govenor'

363. Bakelite Tobacco box + 'George Hepworth/ Normanton g.b. + dark room lamp + bass ashtrays, John Bull tin + HMS Inflexible Life belts

364. 'Bisodol/ Anadin' shop door perspex sign + boxed horse decoration & rosettes, boxed World Cup pin badges, motoring posters & His Master Voice book etc.

365. 6 cigarette card albums, scrap album, draught board, empty cigarette pictures album & pillow matches rubber mat
366. Saml Clarkes Patent Pyramid food warmer + labelled Club Black enamel jar, labelled Bradford ointment pot, tins + pencil box & golf roller etc.
367. Corgi cars boxed + boxed Citroen van, American celluloid footballer figure, Citroen cars etc.
368. Mix bottle grp: hamiltons, beer, medicines, wine bottle etc.
369. Wooden barrel 'Stowells of Chelsea Spanish Sherry' + wood & glass rubbing board
370. Wind-up record player with records
371. Cast iron & brass yarn winder 'James H. Heal & Co Halifax' makers
372. Bisto framed advert
373. 6 framed adverts: Sunlight Soap, Clarks Embrocation, Taddy & Co, Clarks Pyramid Night Lamp
374. 5 framed adverts Lux, Prof Horsfords Baking Powder, Kilner Bros Conisboro & Rotherham, John Gosnell & card advert for Vinola Soap
375. 9 pub jugs: (5) Glenmorangie, China Fernet, Saltyre Scotch Whisky, Red Hackel & Great Macaulay (9)
376. 8 pub jugs: (3) Glenmorangie, Saltyre Scotch Whisky, Tobermory, The Famous Grouse, Horlicks, Curries Perth Whisky jug etc
377. 4 pub jugs: Glenmorangie, Saltyre Scotch Whisky, WPCAA1996, Gadenheads Green Label Rum, Nelsons Inhaler, New Orleans tankard
378. 5 pub jugs: (4) Glenmorangie, Red Heckel + The George tankard, Footwarmer, 2 ashtrays Bells & Martini (9)
379. Wooden shop counter till 'G.H. Gledhill & Sons Patentees Trinity Works Halifax'
380. 2 wooden circular spice racks + Denby Dale pie plate & glassware decanters etc.
381. Lrg qty of Ian Allan 'Buses' magazines 1960's
382. Bus conductorsticket machine, bus tickets, leather satchel, leather bowls bog, house brick footwarmer, book: History of Cricket + money bank
383. Mix lot: tiddley winks game, Happy Family game, wooden bricks set, phone cards albums, Play Box annual 1920, Vere Fosters copy books series, money box
384. 2 Bells decanters, wooden money box, 2 pillar box money box tins, Bulwark Tobacco tin
385. Spittoon mug blue & white floral design. Sml base chip (GM)
386. Crawford's Scotch Liqueur ashtray, blue & white willow pattern. V good (GM)
387. Magda Toilet Cream Countie & Co Boston U.S.A.' blue & white design bowl & cover
388. 'Crystal Palace for the Worlds Exhibition 1851' circular flask 'At Combs' Crystal Palace pictured both sides
389. Quart size jug, blue & white pictorial scenes with coat of arms to front. V good
390. Commemorative jug, white glaze, green transfer 'Albert Edward Prince of Wales The Princess Alexandra of Denmark married March 10 1863 portraits both sides
391. Patent "Cosy" pot oriental design + jug 'Bols Amsterdam' + Wedgewood Style jug blue with raised hunting dogs around
392. German stoneware jug with pewter metal lift off lid, grey & blue glaze with raised design portraits etc. Good
393. Cream matt glaze jug with bold relief decoration grapes & vines, ox drawn cart figures
394. Bulk lot: stoneware, cream pots, blacking jars, inks
395. Lux Action-Creme circular tin sign
396. Mix bottles grp: (3) coddys, Halifax g.b., medicines, labelled Swan Ink bottle, pub flasks, tyre ashtray etc.
397. Royal mail postcards album, books, aircraft, chatter box, Xmas baubles, chocolate powder card advert & railway game etc.

408

FINAL SAT LISTING

There will be 500+ Saturday lots. Final listing with more pictures & email:
sales@onlinebbr.com or on Facebook 'BBR Auctions'
 or off BBR's website: **www.onlinebbr.com**



BBR's 4 2015 w/e events

BBR's WinterNational Jan 31 & Feb 1 • Easter Extravaganza April 25 & 26
24th UK SummerNational July 4 & 5 • Autumn Extravaganza Oct 3 & 4

BBR Terms & Conditions

CATALOGUE CONDITION TERMS:

As much care as is practicably possible is given to descriptions. Many items are of an age or nature precluding their being in pristine condition. We give serious consideration to concerns brought to our attention but reserve the right to disagree. Any additional information is generally mentioned before bidding begins but it is often not possible to contact absentee bidders at this point.

We are always happy to answer questions before a sale but it is your responsibility to reassure yourself before purchase. Generally we will indicate our judgement of lots quality & condition, giving due consideration to age & rarity. For guidance purposes only the following terms are used to give a feel of this judgement.

Cleaned / Restored: An object has been subjected to some restoration. Typically with glass items surface may appear tumbled or dipped, to remove unsightly patina or chips, or restored with resin. A ceramic item may have had portions replaced or re-glued. We recommend you examine an item or telephone for AB's assessment of the extent of such. Cat. descriptions may make reference to damage or restoration but omission of such does **NOT** imply a lot is free from defects, nor does a reference to a defect imply absence of others.

Good: We judge it to be a good example, displays well, minus overtly unsightly damage. An item that is not pristine with signs of use & age - might include scratches, tears, surface faults.

Very Good: The item displays minor signs of wear, apparent on close inspection. This may include inconsequential chips or flaws, some corrosion to metal parts, or minor damage in unseen area (*ie base or rear*).

Excellent/ A1: An item as near to possible pristine, taking into account age. A bottle might for instance have base wear but full body sheen & strong embossing - no chips or cracks. Any time of manufacture flaws or patina of age in this instance deemed either part of the character, or not detracting.

IN SHORT

Many items are of an age/ nature precluding their being in pristine condition. Some catalogue descriptions may refer to damage/ & or restoration. Omission of such does not imply a lot is free from defects, nor does any reference to a particular defect imply the absence of others.

IMPORTANT:

No statement in this catalogue shall be deemed a warranty, representation or assumption of liability in respect of date, size, condition, quality, importance or provenance.

Ultimate judge, & onus, is with the buyer.

BIDDING

The highest bidder is deemed the purchaser. Advances on each lot determined by the Auctioneer.

BIDDING FOR SOMEONE ELSE?

If you intend to purchase items for another person it is important you obtain a SEPARATE bidding

number.

POSTAL BIDDING

Performed on behalf of absent buyers to buy items as cheaply as possible competing with other bids. No charge for this.

POSTAL BID SHEETS

Tied bids - the first to arrive secures. This can result in bidding the same price as someone else but **NOT** securing. It is in your best interest to return forms soon as possible. **If you tel or fax bids through you MUST ALSO post off the bidding form, even though it may arrive after the sale.**

ESTIMATES

Estimates are purely a guide - taking into account condition, rarity, & current market interests. Particular rarities, highly desirable, or unusual items can, & often do, exceed estimates.

TELEPHONE BIDDING

ONLY tel bids STARTING at £200+ accepted due to staffing logistics.

RESERVES

'NR' indicates lots **with NO RESERVE**. Other lots may carry reserves but not always.

PAYMENT

Tel/ postal/ fax & floor bids are a legally binding contract. Purchases to be paid before taken away. Cheques to BBR Auctions. **Overdue accounts charged 3% after 21 days.**

CREDIT CARD PAYMENTS

BBR accepts: Visa, MasterCard, Visa Delta & Switch. Renegotiated bank charges now just a 3% levy for this.

You must complete your credit card information on the postal bid sheet - inc. EXPIRY DATE & ISSUE No. & issue date for a Switch card.

POSTAGE

Postal purchasers **MUST** advise how they wish items sending. Full p & p costs borne by purchaser. Following a sale we pack, weigh, & invoice for total amount, inc. p & p.

POSTAL BUYERS

Packing & weighing can take one working week to complete - **please remain patient.**

BBR PACKING

Generally our costs are much less than half competitors - such as Mailbox etc. We try to keep costs low: packing time & materials used. We have extensive experience with all manner of shapes, sizes, & fragility, which may require special boxes! Very bulky or heavy items we suggest carriers rather than Parcel Force. If you have a preferential carrier **please advise when forwarding bids.**

INSURANCE

BBR can insure goods in transit **IF REQUESTED**. **UK PO rates:** Extra insurance up to £1,000 goods value, £3.00 up to £2,500 value. **NOT** done unless specifically requested **at time of bidding. Please familiarise yourself with P.O. terms & conditions of insurance.**

OVERSEAS PURCHASERS

Insuring goods requires declaration of **FULL** value. You decide disadvantages/ advantages regarding customs - & advise (on bidding sheet).

AGENTS In all cases BBR act only as agents between Vendor & Purchaser.

COMMISSION 15% buyers premium on hammer + vat.

Notes

**FINAL Saturday listing,
with LOTS of images,
email BBR on Sat 18 Jan
for final pdf:
sales@onlinebbr.com**

email: **sale@onlinebbr.com**
www.onlinebbr.com

Elsecar Antique Centre open 7 days a week 10am - 5pm
Upcoming auction lots on display in BBR's large green cabinets on the left.

BBR
AUCTIONS

BBR's WinterNational

Sat 31 Jan & Sun 1 February 2015

Eisecar Heritage Centre
S Yorks, S74 8HJ
brown 'Eisecar Heritage'
signs off jct 36 M1



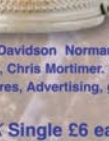
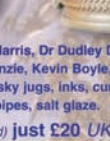
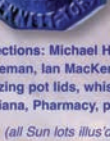
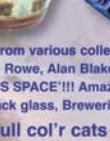
the largest specialist bottle event of its type in Europe
worth travelling to from **ANYWHERE** in the WORLD?



Sat. 11^{am} Unres'd Auction
500+ lots Big 21 Eisecar Heritage Centre. Doors 9^{am} Auc 11^{am}

**Sunday the BIG Show
plus Cat'd Auc. 11^{am}**
120-150 stalls E.E. 8.30^{am} ES. Ord Adm'n 10^{am} F2. Auc 11^{am}

full col'r cat pdf £3
www.onlinebb.com



Auc. items from various collections: Michael Harris, Dr Dudley Davidson Norman Lewis, John Rowe, Alan Blakeman, Ian MacKenzie, Kevin Boyle, Chris Mortimer. BUT 'WATCH THIS SPACE'!!! Amazing pot lids, whisky jugs, inks, cures, Advertising, g.b's, poisons, black glass, Breweriana, Pharmacy, pipes, salt glaze.

NEXT 4 full col'r cats (all Sun lots illus'd) just £20 UK Single £6 each

ENCORE HOTEL DEAL

2 people 1 night £43.50. 2 nights £87. 3 nights £115. tel: 01226 729530.
Mention manageress Alison Hackley.
Online: www.ancorabarnsley.co.uk
Tick Eisecar 1, 2, 3 for number of nights.
SUPERB all you can eat buffet breakfast!
Tour de France July - BOOK EARLY

BBR's 2015 Fairs/ Auctions: Apr 25/26 • 25th UK SummerNational July 4/5
& Oct 3/4 Planning ahead - 2016 SummerNational July 3 & 4

BBR, Eisecar Heritage Centre, Nr Barnsley, S. Yorks, S74 8HJ
tel: 01226 745156 email: sales@onlinebb.com www.onlinebb.com



BBR's 4 2015 w/e events

BBR's WinterNational Jan 31 & Feb 1 • Easter Extravaganza April 24 & 25
24th UK SummerNational July 4 & 5 • Autumn Extravaganza Oct 3 & 4

follow BBR Auctions on Facebook

Auction results, News & updates regularly added to FB - befriend us!

BBR Auctions, Elsecar Heritage Centre
Barnsley, S. Yorks, S74 8HJ tel: 01226 745156
email: **sales@onlinebbr.com** **www.onlinebbr.com**