



Antique Bottles, Pot Lids & Advertising



Sunday 5 July
alongside the 2 day **UK SummerNational**



Antique Bottles & Pot Lids Advertising

BBR
AUCTIONS



Viewing stops generally approx. 10 mins. prior to sale start - 12 noon. All bidders must register & obtain a bidding number. All items sold 'as seen' on sale day. Everyone must view & inspect goods beforehand & accept BBR's Terms & Conditions (see rear of cat). Payment & collection can take place during the sale at any time.

the Chris
Mortimer
collection



the Norman
Lewis
collection



the Michael Harris
Collection

the Kevin
Boyle
collection



the Ian
MacKenzie
collection



the Alan
Blakeman
collection



Dr Dudley
Davidson
collection

Collector provenance stickers

BBR is disposing a number of large collections, all

such lots carry a 'provenance' sticker. Bracketted initials denote from whom: CM = Chris Mortimer

NL = Norman Lewis MH = Michael Harris KB = Kevin Boyle IM = Ian MacKenzie

AB = Alan Blakeman DD = Dr Dudley Davidson JR = John Rowe



there is an admission charge for the auction held beside the 25th....

UK SummerNational w/e July Sat 4 & Sun 5 2015

Viewing: Sat 10am 4pm Sun 9am to 11.45am Sale starts 12 noon

Post, tel. (book lines early!) & fax bidding facility Low cost after sale post & packing service worldwide

Sale carries a 15% buyers premium added to all hammer prices (+ vat on the 15% premium only)

Refreshments on site both days

Catalogue prepared by Frank Burgin, Clare Bell & Alan Blakeman

BBR, Elsecar Heritage Centre, Nr Barnsley, S Yorks., S74 8HJ

tel: 01226 745156 fax: 01226 361561 email: sales@onlinebbr.com

**Terms & Conditions
at rear of catalogue**

Pot lids



1. HABANA POT LID & BASE.

2ins diam,
'BOTICA Y DROGUERIA DE S JOSE/ ACUIAR ESQUINA A

LAMPARILLA'. Seated lady

pictured, scale of justice large central image to transfer. Very good. NR £60-80+. (NL)

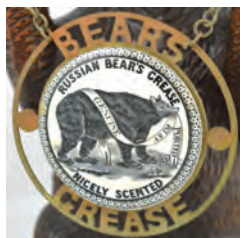
2. A HERO OR 'JACK AT UNCLE MAJOR'S' POT LID.

2.75ins diam, black & white pictorial lid. Seated old gent & small boy pictured. Some minor fading - nevertheless an especially rare offering. NR £80-100+. (GM)



3. BEARS GREASE ADVERTISING FIGURE.

12.5ins tall, Black Forest style bear holding pot lid, plaque suspended by chains set in a metal holder. 'RUSSIAN BEARS GREASE/ GENUINE AS IMPORTED/ NICELY SCENTED'. Lid is an original - 'amended' to fit the metal carrier, the bear too is an old item. - unsure when the marriage of components took place - but a most unusual bear 'go with! Very good. £200-300+?



4. BEARS GREASE

POT LID. 3.5ins diam, blue transfer, 'GENUINE/ BEARS GREASE/ IMPORTED BY JOHN GOSNELL & CO/ SUCCESSORS TO PRICE & GOSNELL/ 12 THREE KINGS COURT/ LOMBARD ST. LONDON'. Standing bear pictured. Possible flange restoration. NR £80-120+. (NL)



5. BEARS GREASE

POT LID. 3ins diam, 'GENUINE RUSSIAN BEARS GREASE/ FOR STRENGTHENING & PROMOTING THE GROWTH OF HAIR/ LONDON'. Bear pictured. Some overall staining/ flange restoration. NR £60-80+. (NL)



6. VERITABLE MOELLE DE BOEUF POT LID & BASE.

2.75ins diam, blue & white transfer, bull pictured to lid & base

'VERITABLE MOELLE DE BOEUF/ ED PINAUD 37 BOULEVARD DE STRASBOURG PARIS'. Some nibbles/ damages. NR £80-120+.



SummerNational stickers

All lots in this sale carry a small '2015 SummerNational' provenance sticker.



7. COLOGNE TOOTHPASTE POT LID & BASE. 2.5ins diam, 'COLOGNE TOOTH PASTE/ MOST REFRESHING CLEANSING & ANTISEPTIC'. H

Gilbertson & Sons trade mark - Cologne Cathedral

pictured to centre. Very good. NR £80-120+.



8. BURGOYNE BURBIDGES POT LID. 3.5ins diam, **black** pictorial transfer on **pink** background 'BURGOYNE BURBIDGES & COS/ CHERRY TOOTHPASTE'. Impressive factory buildings pictured. An exceptionally rare offering - one of the UK's finest pictorial lids? Some staining. NR £800-1,200+. (NL)

9. BURGON & CO POT LID. 3.25ins diam, 'ARECA NUT BURGON & CO TOOTHPASTE / MANCHESTER & BOLTON'. Elephant pict.

t.m. Tiny flange flake. A very rare large size lid. NR £80-120+.



10. BUISSON FRERES POT LID. 3.75ins diam, 'ORANGE BLOSSOM TOOTH PASTE/ BUISSON FRERES LONDON & PARIS'. Orange blossom pictorial to

centre of highly detailed black transfer. Unusual overall cream background. Slight top edge glaze wear. Another very rare large size, impressive, lid. NR £80-120+. (NL)



11. THE GROCERS ASSOCIATION POT LID & BASE. 3.5ins diam, 'THE GROCERS ASSOCIATION LIMTD ARECA NUT TOOTHPASTE LONDON'. Men in boat fishing with cherries to side pictured.

Tiny flake to flange, slight glaze wear to top edge. Another scarce large size lid. NR £80-100+.



THIS SALE STARTS AT 12 NOON ON SUNDAY 5 JULY

SALE DAY FLOOR BIDDERS

All items sold **AS SEEN**. Bidders must ensure lot/s meet personal condition standards. If you find faults/ errors we have missed **PLEASE** advise BBR staff immediately.

TERMS & CONDITIONS are printed to the catalogue rear. All bids accepted on the understanding these have been read, & accepted.



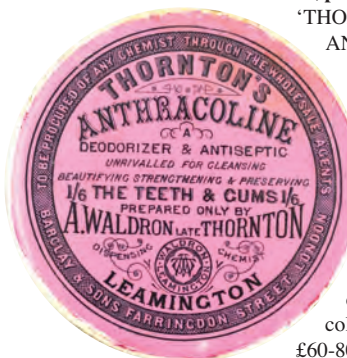
12. JOHNSONS POT LID. 2.75ins diam, 'JOHNSONS CELEBRATED SCURVY AND EYE OINTMENT/ SUMMER HOUSE WRINE HILL NEAR CREWE'. Detailed building pictured with

figures, horse & cart in foreground. Some flange restoration. The first example of this exceptionally rare variant we have offered in 40 years! NR £? (NL)

13. JOHNSONS POT LID. 2.75ins diam, 'JOHNSONS CELEBRATED OINTMENT/ MANUFACTORY/ SUMMER HOUSE WRINE HILL NEAR CREWE'. Detailed building pic foreground. £170-220+.



14. LEAMINGTON THORNTONS ANTHRACOLINE POT LID. 3.5ins diam, **black** transfer, **pink** background. 'THORNTON'S/ ANTHRACOLINE PREPARED ONLY BY A. WALDRON LATE THORNTON/ LEAMINGTON'. Extra large 1/6 size, plus an unusually strong/ even background colour. Very good. NR £60-80+.



15. LEAMINGTON THORNTONS ANTHRACOLINE POT LID. 3ins diam, **black** transfer, **pink** background 'THORNTON'S/ ANTHRACOLINE/ PREPARED ONLY BY A. WALDRON LATE THORNTON/ LEAMINGTON'. Another very fine/ well coloured example - this the 1/- size. Very good. NR £60-80+.

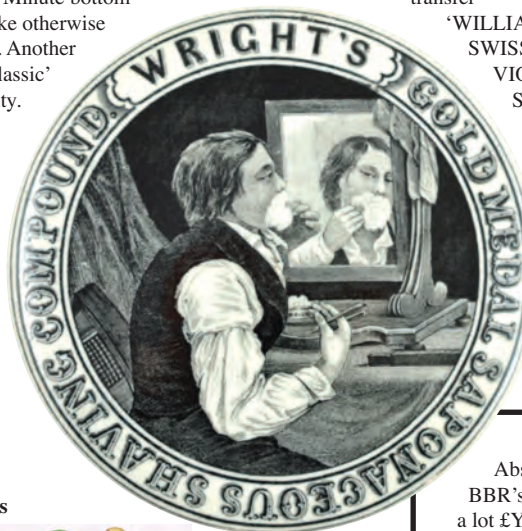


16. LEAMINGTON POT LID. 3ins diam, 'NUTRITIVE CREAM FOR/ RESTORING WEAK HAIR/ UNDER THE PATRONAGE OF THE/ NOBILITY/ PRICE 1 & 2/ PREPARED SOLELY BY MRS WILLIAMS/ LEAMINGTON'. Flange & under top edge chips. NR £40-60+.

17. KRANOL LARGE POT LID & BASE. 4.25ins diam, 'THE GREAT HAIR FOOD/ KRA NOL/ IS UNSURPASSED/ PRICE 2/9 & 5/- PER BOX/ PATENTED IN ENGLAND AND ABROAD REG NO 281110'. Lady with long tresses pictured. Good examples of this all time UK 'classic' pictorial remain scarce, but this extra LARGE size variant is very rare indeed. Stunning! Very good. NR £150-200+.



18. WRIGHT'S SAPONACEOUS POT LID. 4ins diam, 'WRIGHT'S GOLD MEDAL SAPONACEOUS SHAVING COMPOUND'. Large detailed pictorial of gent shaving - looking into mirror reflection. Minute bottom flange flake otherwise very good. Another all time 'classic' pot lid rarity. NR £600-700+.



19. WILLIAM'S SHAVING CREAM POT LID & BASE. 3.75ins diam, brown transfer

'WILLIAM'S SWISS/ VIOLET/ SHAVING CREAM/ PREPARED BY/ THE J.B. WILLIAMS CO/ MANUFACTURING CHEMISTS/ GLASTONBURY. CONN./ PROPRIETORS OF GENUINE YANKEE SHAVING SOAP', lilac & green coloured violets & outer border. Very good. NR £80-120+. (NL)



Hamiltons



EITHER OR BIDS

Absentee bidders on tight budgets can use BBR's unique 'either' 'or' option. Bid £X on a lot £Y on another, if unsuccessful. We can even carry amounts over. **BUT** - make instructions simple & clear! If in doubt email AB.



20. STOCKERS STONEWARE

HAMILTON. 8.5ins long, speckled tan salt glaze hamilton bottle, internally grey green slip glazed. Imp'd 'STOCKERS EFFERVESCENT GINGER BEER/ UNFERMENTED' one side, to other side 'ROYAL AERATED/ WATER WORKS/ 13 THOMAS STREET/ STAMFORD STREET/ BLACKFRIARS'. An exceptionally rare address variant. Very good. NR £800-1,200+. (DN)



21. EARLY HAMILTON BOTTLE. 7.5ins long, dark olive green glass, pontil scarred base, rolled lip. Embossed to two sides 'DE GRUOCHY SUPERIOR/ SODA WATER/ SILVER STREET/ CITY'. Delightful, & colourful, all over body patination/ iridescence. Extremely rare, early, hamilton. NR £600-800+.



23. GREEN GLASS SCARBOROUGH HAMILTON. 9ins long, bright green hamilton embossed 'THE SCARBOROUGH BREWERY COMPANY LTD' with dolphin fountain t.m. 'CRYSALIS WATERS'. The ultra rare large size. Very good. NR £500-600+. (GM)



22. DUNDEE EARLY HAMILTON. 7.75ins long, aqua glass pronounced flattened flared lip, embossed 'D. RUSSELL/ GENUINE SUPERIOR/ AERATED WATERS/ HIGH STREET DUNDEE'. Full of tiny seed bubbles in the glass. Unique? A very significant early (& Scottish!) hammy! Believed unique? Very good. NR £500-600+. (DM)



24. AMBER GLASS HAMILTON. 9.5ins long, golden amber (varying) glass hamilton embossed 'LEIGH & CO/ SALFORD' with the globe trade mark to rear. Extremely rare & one of the very best examples I've ever seen! Exc/ very good. NR £250-300+.



AFTER SALE PRICES REALISED

on: www.sales@onlinebbr.com
or Facebook - BBR Auctions
or email BBR for a pdf: sales@onlinebbr.com

follow BBR Auctions on Facebook:

Auction results/ News/ Updates regularly added to FB



**25. BIRMINGHAM BULB
NECK CODD/ HAMILTON
HYBRID BOTTLE.**

7.5ins long. Aqua glass embossed 'GOFFE & SONS/ BIRMINGHAM' with crossed bottles t.m. 'BREFFIT'S MAKERS CASTLEFORD' to rear. Very good, nay - fabulous! NR £250-300+.



26. LARGE SIZE CODD/ HAMILTON HYBRID BOTTLE. 9.75ins tall, aqua glass. Very heavily embossed 'PALLONJI HEERJI/ MINERAL WATER FACTORY EST'D/ 1865' to front. 'WM BARNARD/ & SONS LONDON' to rear base. Overall good, as dug, needs a clean. Never seen an example of this extra large size before? NR £60-80+.



27. HAMILTON STAND. 3.5ins tall, silver plated hamilton bottle stand. Very good. NR £30-40+.

CONDITION - help us to help you!

If you spot condition differences/ faults/ repairs we haven't please advise BBR staff. We always announce such amendments prior to a sale.



Minerals & patents

28. NETHERWOOD & SHAW'S PATENT BOTTLE. 8ins tall, aqua glass. Embossed 'NETHERWOOD & SHAW'S PATENT/ PURIFIED STOPPER', with 'B. SHAW/ HUDDERSFIELD' registered (flower pictorial) t.m. 'KILNER BROTHERS MAKERS' round base. Minor neck 'flaw' (design flaw) but this would rate perhaps the finest example known? Less than a handful recorded.



Very good.
NR £700-800+.
(GM)



**ABSENTEE
BIDDING FORMS**

Following a reneged bid BBR insists **ALL** Postal Bid sheets **MUST LIST FULL C.C.** details, or bids will **NOT BE ENTERED!**

29. EXETER EARLY SLIM NECK AMBER GLASS CODD BOTTLE.

7.75ins tall, **golden amber** glass embossed 'SKINNER/ EXETER' to front 'CODDS PATENT MAKERS RYLANDS & CODD BARNESLEY' to rear. Professionally cleaned, highly embossed as is the want on these! Ultra rare. NR £400-500+. (AB)



32. CIRENCESTER EARLY SLIM NECK CODD BOTTLE.

8.75ins tall, aqua glass flat bottomed codd with **green marble!** Embossed 'W. GRIFFITHS/ CIRENCESTER' to front 'CODDS/ PATENT/ 4/ LONDON S.E.' to rear. Only known example? Stunning. Very good. NR £300-400+. (GM)



30. ICE BLUE CODD BOTTLE.

9.5ins tall, round 12 sided/ faceted shape, **ice blue** glass. Acid etched 'AQUILES RICETTA/ MADRYN/ CHURUT' - Argentinian (?). Unusual gutta percha (?) internal stopper. Rare. Very good. NR £350-400+



31. BLUE CODD BOTTLE.

6.75ins tall, **deep cobalt blue** glass bulb neck codd bottle embossed 'GOFFE & SONS/ BIRMINGHAM' crossed bottles pict. t.m. within circle to front 'E. BREFFITT & CO LD/ MAKERS/ CASTLEFORD' to rear. Upper area restored - an 'affordable' UK all time classic @ a twentieth the cost of a mint one? NR £300-400+.



33. LEICESTER EARLY SLIM NECK CODD BOTTLE.

9ins tall. Pale **greenish** aqua glass embossed 'CLEAVER CHEMIST/ LEICESTER' to front. 'CODDS/ PATENT/ 18/ LONDON/ S.E.' to rear. Simply wonderful. Very good. NR £80-120+. (GM)



**THIS SALE STARTS AT 12 NOON
ON SUNDAY 5 JULY**

SummerNational stickers

All lots in this sale carry a small '2015 SummerNational' provenance sticker.



34. JERSEY PATENT? BOTTLE.
7.5ins tall, aqua glass dumpy shape,
4 circular indents to shoulder.
Heavily embossed 'P.P.
DESLANDES & SONS/
AERATED/ WATERS/ JERSEY'
both front & rear. Very good. NR
£80-120+. (GM)



**35. CROSS'S
PATENT BOTTLE.**

7.75ins tall, aqua glass, embossed 'THE
ROSSENDALE MINERAL WATER CO
LIMITED WATER-FOOT' to front
'CROSS'S PATENT CAPSULATED
CORK/ KILNER BROS/ THORNHILL
LEES SOLE MAKERS' to rear. Ultra rare.
NR £40-60+. (GM)



36. CODD BOTTLE FILLING MACHINE.
17.5ins tall, 16 by 9ins at base. Heavy cast metal,
base with 'TALIMAHOMED & CO
HORSE BRAND/ 144-146
SARANG STREET BOMBAY 3'
in raised
lettering.
Complete
with 3 Indian
codd bottles. A
rare offering! NR
£300-400+. (GM)



**36A. BARNET &
FOSTERS SODA
SYPHON FILLER.**
Syphon filler in heavy
cast iron
construction 51.5ins
tall, 'BARNETT &
FOSTER LONDON
N' in raised lettering to
top section & column. 2
levers to top, foot lever to
base. Plus - accompanying
pressure guage, heavy cast
iron, 58ins tall
'BARNETT & FOSTER
ENGINEERS EAGLE
WHARF ROAD' makers
marks. Very rare. (2) NR
£150-200+.



**36B. TIN
FOIL**

APPLICATOR. 37ins tall,
heavy cast iron construction,
tripod base, lever to top. To apply
tin foil caps to bottles. 'IDEAL
CAPSULES LTD SLOUGH
BUCKS ENGLAND' makers
label to top. NR £60-80+.



BBR Auctions on Facebook

Auction results, News, Updates
regularly added to BBR Auctions
on FB - simply befriend us.....



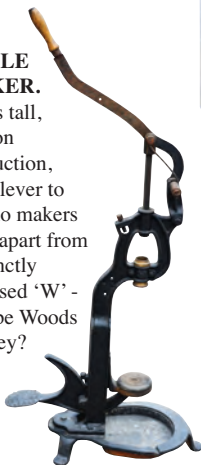
36C. BOTTLE CORKER. 47ins tal, heavy cast iron construction on sit aside base weighted lever to top. 37ins long 14 ins wide at base 'MADE IN IRELAND BY W G EDMONDS & CO DUBLIN' in raised lettering to top. NR £80-120+.



36D. BOTTLE CORKER. 51ins tall, lighter cast iron construction on 4 leg base, painted red, spring operated lever 'MARCA DE. ABBRIC DEPOSITAR' makers plaque. NR £60-80+.



36E. BOTTLE CORKER. 31.5ins tall, cast iron construction, spring lever to base, no makers marks apart from indistinctly impressed 'W' - could be Woods Barnsley? NR £60-80+.



Gingers & stouts

37. MONTROSE GINGER BEER BOTTLE. 8.75ins tall, ch. t.t. s.s. **black** transfer 'W.A. SCOTT/ MONTROSE' detailed shop premises building pictured. 'CENTRAL HOTEL' to flag top of building. Buchan p.m. Small lip chip. Affordable (?) Scottish classic. NR £500-600+. (IM)



38. LEITH GINGER BEER BOTTLE. 8.75 tall, ch. t.t. s.s. **black** transfer 'GINGER BEER W & J JENKINSON/ LEITH' with mythical seahorse pict. t.m. Gray Portobello p.m. Underside base nick otherwise very good. NR £60-80+.



39. HULL GINGER BEER BOTTLE.

7.75ins tall, ch. t.t. **black** transfer 'HAY'S/ BREWED GINGER BEER/ HULL' pictorial transfer lady beside fountain t.m. Buchan p.m. Very good. NR £60-80+.



40. RHYL GINGER BEER BOTTLE. 6.75ins tall, st. all over salt glaze. Transferred 'THE RHYL MINERAL WATER CO LIMITED/ WINDSOR WORKS WINDSOR ST'. Cricket bat & stumps pict. t.m. Stiff Lambeth p.m. at the front. As good an example as I've ever seen, minute pin head nick to one edge otherwise very good. NR £30-40+.



41. EDINBURGH GINGER BEER BOTTLE. 8ins tall, ch. t.t. **black** transfer 'J. ROBERTSON & CO 38 YORK PLACE/ EDINBURGH/ BREWED GINGER BEER'. Thistles t.m. Gray Portobello p.m. Very good. NR £30-40+. (IM)





42. TEAKETTLE INK ON STAND. 4.25ins tall. Opaque white glaze tapering octagonal shape, with **gold highlights & pink & green** roses around. **Gold** coloured lift off metal cap to upturned spout. On elegant stand, **gold** coloured leaf & shell with flowers, grape vines etc. Very good. NR £400-600+. (AB)



Inks



43. MINIATURE TEAKETTLE INK. 1.5ins tall, ceramic ink tapering six sided shape with upturned spout. **Red, blue & gold** floral design. Very good. NR £250-300+. (AB)



44. MINIATURE TEAKETTLE INK. 1.25ins tall, clear glass tapering octagonal shape with upturned spout fitted with brass lift off cap. Very good. NR £150-200+. (MH)



45. TEAKETTLE INK. 2.25ins tall, **golden amber** glass, tapering fluted circular shape with upturned spout, with sheared lip. One of the most difficult teakettle forms to acquire. Very good. NR £300-400+. (AB)



46. TEAKETTLE INK. 2.5ins tall, **cobalt blue** glass tapering stepped octagonal shape with upturned spout. Raised flower embossed across top. Very good. NR £300-400+. (AB)



SummerNational stickers

All lots in this sale carry a small '2015 SummerNational' provenance sticker.



47. TEAKETTLE INK.

2.75ins tall, stunningly vibrant **lime green** glass, ribbed & curved, pear shape, body form with short upturned spout. Very good. NR £250-300+. (NL)



48. TEAKETTLE INK. 2.25ins tall, **deep purple** glass, tapering fluted octagonal shape, upturned spout with brass lip ring. Scarce colour. Missing lid. NR £120-150+. (NL)



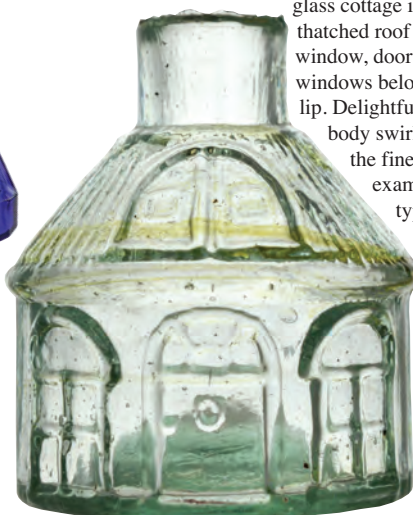
49.

FORTSCHRITT PATENT

INKSTAND. 2.5ins tall, 3 square shape inkwells (2) in **cobalt blue** glass, one in **amber** glass embossed 'PATENT/FORTSCHRITT' all on wooden stand 9.5 by 3.75ins. Very good. Rare to find complete. Very good. NR £250-300+. (MH)

51. CIRCULAR COTTAGE INK.

2.25ins tall, aqua glass cottage ink shape, thatched roof - with window, door & 2 windows below. Sheared lip. Delightful **amber** body swirls. Perhaps the finest examples of its type? Exc/ A1. NR £1,200-1,500+. (AB)



50. COTTAGE INK. 2.25ins tall, aqua glass square shape cottage ink, thatched roof detail, door & window both sides. Some dullness - which should clean easily. In 40 years this is the very first example we have offered.

NR
£1,500-
2,000+.



52. COTTAGE INK. 2.5ins tall. **Green** glass cottage shape ink, tiled roof, door & windows to front. Window protrusion to side pen recess to rear. A rare colour hue but extraordinarily crude/ misshapen, lots of bubbles, great character! Some dullness - to clean or not (*I personally would - the in manufacture bubbles would look stunning!* AB). NR £300-400+.



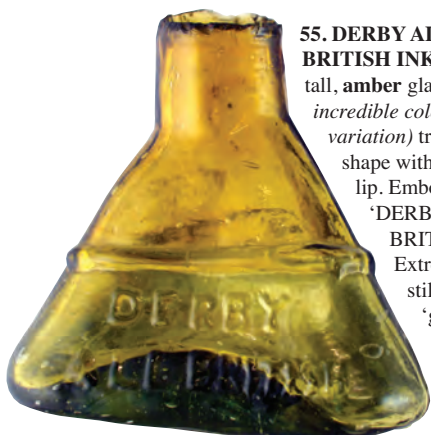


**53. TABLET
SHAPE INK.**

1.5ins tall, aqua glass, flat ended circular shape pen recess to top with upturned spout, sheared lip. Very good. NR £50-60+.



54. TENT INK. 2.25ins tall, mid blue glass, ribbed shouldered circular shape, with pen recess. Diamond registration mark to base. Very good. £20-30+. (MH)



**55. DERBY ALL
BRITISH INK.** 2.25ins tall, amber glass (*quite incredible colour variation*) triangular shape with sheared lip. Embossed 'DERBY/ ALL BRITISH'.

Extremely rare still - & this a 'gem'. Very good. NR £250-300+. (NL)



56. CLOCK INK? 3.25ins tall, aqua glass tall bell shape, raised clock face with embossed 'R.S.B. & S LEEDS'. *Ex Norman Lewis sticker to side.* Very good. Still a great rarity, not often seen on the open market. NR £60-80+.



57. SQUARE INK. 2.25ins tall, dark green glass, neck to one side with smooth lip, with pen recess. Very good. NR £30-40+. (NL)



**58. OCTAGONAL
INK.** 2.25ins tall, aqua glass uneven octagonal shape, stepped shoulder neck,

sheared lip. One side panel embossed 'LG'. Never seen another? Very good. NR £30-40+. (NL)



59. CONTINENTAL INK. 3.25ins tall. Great olive green glass tapering pyramid shape, sheared lip embossed 'G APHANB/ PHRA'. Never seen another. Good. NR £30-40+.

Cream pots



**60. PRESTWICH
CREAMERY
CREAM POT.** 5.25ins tall, off white glaze, black transfer 'PRESTWICH CREAMERY/ WEBSTERS/ PURE/ FRESH/ CREAM'. An extremely rare large size - few recorded. Very good. NR £60-80+.



61. J. CLARKE AND SONS CREAM POT. 3.75ins tall, **blue** top, lower **white** glaze, **black** transfer 'J. CLARKE AND SONS/ DAIRY AND CREAMERY/ 329 HIGH ROAD CHISWICK/ AND AT/ KEW GARDENS AND AT KEW GARDENS AND/ RICHMOND' dairy maid & cow pictorial. Side hairline & rear handle repair. NR £60-80+.

62. TUCKERS CREAM POT. 4.5ins tall, cylindrical cream pot, **white** glaze, strong **purple** transfer.



'DEVONSHIRE CLOTTED/ CREAM/ FRESH DAILY AT/ TUCKERS/ 287 STRAND/ LONDON'. Full cow pict. t.m. to rear. Slight staining & inside rim hairline. NR £60-80+.

63. HISLOP & SON CREAM POT. 3.75ins tall, **blue** top, **black** transfer. 'HISLOP & SON/ DAIRY FARMERS'. Very good. NR £60-80+.



64. COOP'S CREAM POT. 4.5ins tall, cylindrical cream pot, **white** glaze, **black** transfer 'COOP'S/ PURE/ DEVONSHIRE/ CLOTTED/ CREAM'. Very good. NR £60-80+.



65. BELFAST CREAM POT. 5ins tall, churn shape, **brown** top lower off **white** glaze, **black** transfer 'RICH FRESH CREAM/ FROM/ THOMPSON'S (BELFAST) LTD/ 14 DONEGALL PLACE/ BELFAST'. Very rare large size. Very good. NR £60-80+.



66. BRADFORD CREAM POT. 4ins tall, off **white** glaze, **black** transfer 'SCOTT'S/ SPECIAL CREAM/ THE CREAMERY/ BRADFORD' full cow pictorial. Another great rarity. Very good. NR £60-80+.

67. DOWNSHIRE CREAMERY CREAM POT. 4.25ins tall, off **white** glaze, **black** transfer 'PURE/ FRESH CREAM/ SUPPLIED DAILY/ FROM/ DOWNSHIRE/ CREAMERY/ SPRUCEFIELD LISBURN'. Very good. NR £40-60+.



68. BLACKLEY CREAM POT. 3.75ins tall, off **white** glaze, **black** transfer 'PURE THICK CREAM WALKER'S/ BLACKLEY' full cow pictorial (large). Very good. NR £30-40+.

CONDITION - help us to help you!

If you spot condition differences/ faults/ repairs which we've missed please advise BBR staff. We always announce amendments prior to the sale.



69. GLOUCESTER & NORTH HANTS CREAM POT. 4.25ins tall, **brown top lower off white** glaze, **black** print 'LONDON, GLOUCESTER & NORTH HANTS DAIRY CO/ LIMITED'. Very good. NR £30-40+.



70. PONTYPRIDD CREAM POT. 3.25ins tall, **brown** glaze cylindrical cream pot, **black** print 'T. MORGAN FRUITERERS/ PONTYPRIDD'. Very good. NR £30-40+.



71. HUDDERSFIELD CREAM JUG. 3ins tall, **off white** glaze, **black** transfer, handle to rear. 'RICH FRESH CREAM/ WEST/ PARADE DAIRY/ E. CRAWSHAW/ HUDDERSFIELD' full cow pictorial. Chip repair to side. NR £30-40+.

72. THE NEW DUTCH DAIRY MILK BOTTLE. 8.75ins tall to top of wired on ceramic stopper. **White** glaze, **blue** transfer 'A.H. RUBY THE NEW DUTCH DAIRY CO/ EMBABEH NEAR CAIRO' clear glass tapering cylinder bottle with **blue** lettering 'THE NEW DUTCH DAIRY/ A.H. RUBY & CO/ EMBABEH/ NEAR CAIRO'. Good. NR £150-200+.



73. THE BONNE NUIT FOOTWARMER. 11ins tall top of stopper, **brown top, blue** transfer 'THE/ BONNE NUIT/ FOOTWARMER/ REGISTERED NUMBER 638377' with hand snuffing out candle in candlestick pictured. Rare. Very good. NR £60-80+.



74. BOOTS HOT WATER BOTTLE. 8.5ins tall, **off white** glaze, **black** transfer 'BOOTS THE CHEMISTS/ "RADIANT"/ HOT WATER BOTTLE THIS BOTTLE SHOULD BE/ WARMED BEFORE BEING FILLED/ BRITISH MADE'. Unusual. Scarce. Good. NR £40-60+.



75. CHEROOT HOLDER. 5.5ins long, **white** Meerschaum moulded as a reclining lady with amber mouthpiece. Complete in original case. Stem repaired. NR £20-30+.

POSTAL BIDDERS ... must satisfy themselves lot/ s meet their condition standards. For a more detailed inspection/ personal assessment please tel. BBR to speak with AB. Following a reneged bid BBR insists **ALL** Postal Bid sheets **MUST LIST FULL C.C. details** - otherwise bids **NOT ENTERED!**

Pub jugs



76. KINGS COUNCIL OLD HIGHLAND WHISKY PUB JUG.

6.75ins tall, top & base **dark blue**, middle **tan** salt glaze 'OLD HIGHLAND WHISKY/ KINGS COUNCIL/ SOLE PROPRIETORS/ CROSS CHARLWOOD & CO LONDON & GLASGOW' with raised portrait of lawyer/ barrister to front 'KC' in **red** raised lettering both sides. Royal Doulton circle mark lion & crown impressed mark to base. Very good. NR £400-600+.



77. OLD DAD PUB JUG.

4.5ins tall, **dark blue** with **white** lettering one side. **White** with **black** lettering to the other 'OLD DAD'/ SCOTCH WHISKY/ SOLE PROPRIETORS/ ANGAS & CO LEEDS'. Some restoration (flaking) & colour wear but still an extremely rare jug. NR £60-80+. (NL)



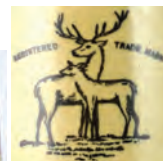
78. No lot

EITHER OR BIDS

Absentee bidders on tight budgets can use BBR's unique 'either' 'or' option. Bid £X on a lot £Y on another, if unsuccessful. We can even carry amounts over. **BUT** - make instructions simple & clear! If in doubt email AB.

79. PETER MACKENZIES

PUB JUG. 4.5ins tall, stoneware jug, **brown** top lower **off white** glaze, raised plaque to front in **white** imp'd 'THE DEW OF THE GRAMPIANS/ PETER MACKENZIES RARE OLD SCOTCH WHISKY/ P. MACKENZIE & CO DISTILLERIES' stag & deer pict. t.m. to sides Lovatt p.m. to base. Most unusual. Very good. NR £60-80+.



80. GREENLEES BROTHERS

PUB JUG. 6.5ins tall, **white** glaze body, **green** transfer 'GREENLEES/ BROTHER/ CLAYMORE/ RARE OLD SCOTCH WHISKY' crossed Claymores pict. t.m. Royal Doulton p.m. Kiln flaw/ flake one side otherwise really good. NR £170-220+.



81. GAELIC SMUGGLER WHISKY PUB JUG.

6.25ins tall, **white** glaze, **black** transfer 'CRAIGELLACHIE - GLENLIVET DISTILLERY/

SCOTLAND' with picture of distillery to front. 'STIRLING BONDING COY STIRLING/ SCOTLAND' below rim. 'GAELIC OLD SMUGGLER WHISKY' both

sides. James Green

& Nephew p.m.

Minute rim chip &

some rusting/

staining. A rare

offering. NR

£250-300+. (NL)





82. BUCHANANS PUB JUG. 4ins tall, **green** top & base, **white** middle section with **black** transfer 'AS SUPPLIED TO/ HOUSES OF PARLIAMENT SPECIAL SCOTCH' with houses of parliament pictured 'BUCHANANS/ WHISKIES' in yellow lettering above & below. R. Hammersley & Son Burslem p.m. Tiny hairline at back by handle - doesn't detract. Fabulous item. Very good. NR £120-150+. (AB)



**R. HAMMERSLEY & SON
BURSLEM**



83. JOHN JAMESON PUB JUG. 6ins tall, **yellow** glaze, **black** transfer 'NOT A DROP IS SOLD TILL ITS SEVEN YEARS OLD' below rim 'JOHN JAMESON'. Stylised male figure, barrel on back, to one side 'WHISKY', 3 stars to other. Very good. NR £40-60+. (NL)



84. CLAN IVOR PUB JUG. 4.5ins tall, **brown** lower, **pink** glaze **black** transfer 'MITCHELLS & BUTLERS/ CLAN IVOR/ OLD SCOTCH ISLAY'. Hairline & small rim chip repair. NR £60-80+. (NL)



85. "BOS" WHISKY PUB JUG. 6ins tall, **dark green** glass jug with clear glass, applied handle 'TRY THE FAMOUS/ "BOS"/ WHISKY' in **white** enamelled lettering. Very good. NR £80-120+. (NL)



86. KIRKER GREER & CO LTD PUB JUG. 4.5ins tall, clear glass, applied handle 'THE SHAMROCK WHISKY/ KIRKER, GREER & CO LTD/ BELFAST' in **green & black**. Very good. NR £60-80+.



87. SWINDON PUB NAMED TANKARD. 6ins tall, **blue & white** oriental scene all around 'EAGLE TAVERN NEW SWINDON' in **black** lettering to belt at front 'IMPERIAL ONE QUART' with crown above to side. Old base chip & lip nibbles otherwise fine. NR £120-150+.



POSTAL BIDDERS

Postal bidders must satisfy themselves lot/ s meet their condition standards. For a more detailed personal assessment please tel. BBR, give lot numbers, & call back later to speak with AB.

CONDITION - help us to help you!

If you spot condition differences/ faults/ repairs which we have not please advise BBR staff. As always we announce amendments prior to sale.



88. OXFORD PUB NAMED TANKARD.

4.5ins tall, **white** glaze with hops & vines transferred to sides 'JOHN TAYLOR/ OSNEY/ ARMS/ BUTLEY/ RD/ OXFORD' with 'Pint VR' below. 'From Alfred Dunn 150 Moor Street Birmingham' printed under base. Some overall wear, generally good. NR £60-80+.



89. SWINDON PUB NAMED TANKARD.

3.75ins tall, **blue & white** oriental scene all around 'EAGLE TAVERN NEW SWINDON' in **black** lettering to belt at front. Base chip & some wear. NR £80-120+.



90. JOHN HAIG'S

ASHTRAY. 5.5. by 4.75ins, **purple** crocodile skin effect with 'JOHN HAIG'S/ WHISKY' & coat of arms to 'H.M. KING GEORGE V & TO H.M. KING OF SPAIN' in **black** lettering. Fieldings p.m. Chip repair to corner, but still very rare. NR £20-30+.

Whisky jugs

91. GREENOCK WHISKY

JUG. 6.75ins tall, **tan** neck with pouring lip, rear handle, **black** transfer, front with sailing ship enclosed with crown topped belt 'EST'D 1780' rear with 'JOHN BUCHANAN RANKIN (LATE WM FRANKLIN & SONS/ WINE & SPIRIT MERCHANT/ 1, 3 & 5BRYMNER STREET/ GREENOCK'. Lip chips. Kennedy p.m. to base. A rare offering of a unique whisky jug? NR £600-800+.



92. GLEN LOSSIE WHISKY JUG. (W G Pg

98) 7.5ins tall, **tan** neck with pouring lip, handle to rear, **blue** transfer 'GLEN LOSSIE/ OLD HIGHLAND WHISKY/ GLEN LOSSIE DISTILLERY ELGIN SCOTLAND/ JOHN HOPKINS & CO/ LONDON & GLASGOW'. Port Dundas p.m. Very good. NR £500-600+. (AB)



**THIS SALE STARTS
AT 12 NOON
ON SUNDAY 5 JULY**



93. ARCHI-LOWE WHISKY JUG. (*W G Pg 192*) 7.5ins tall, **brown** neck, handle to rear, **black**

transfer 'ARCHI-LOWE/ BRAND/ HIGHLAND CREAM/ SCOTCH WHISKY/ VATTED AND BLENDED BOTTLED BY/ UNITED WINE & TRADING CO/ NEW YORK'. Kilted highlander and his dog pictured. A very highly detailed/ crisp transfer. Never seen another. very good. NR £400-500+. (AB)



94. GLEN OGLE WHISKY JUG.

(*W G Pg 131*) 7ins tall, **tan** neck, rear handle, **black** transfer 'GLEN OGLE/ FINEST OLD/ HIGHLAND WHISKY' Scottish highland scene with thistles surround 'OLD HIGHLAND WHISKY' to rear. Port Dundas p.m. Very good. NR £200-300+. (AB)



93A. THE RABBIE BURNS WHISKY JUG. (*W G Pg 211*) Tan top, rear handle, shaped pouring lip, pictorial transfer showing farmer with horse drawn plough, dog by his side 'THE "RABBIE BURNS"/ WHISKY JAR/ PROPRIETORS CHARLES WILKINSON & CO GLASGOW'. H. Kennedy

Glasgow p.m. Very good. £400-450+.



95. GLEN OGLE SMALL WHISKY JUG (*W G Pg 131*) 4.5ins tall, **tan** neck, rear handle, **black** transfer 'GLEN OGLE/ FINEST OLD/ HIGHLAND WHISKY' Scottish highland scene with thistles surround.

Cautionary lines to rear. Midland Pottery. Super strong transfer. Very good. NR £250-300+. (AB)



96. WILLIAM JAMESON & CO WHISKY JUG. (*W G Pg 102*) 7.5ins tall, **tan** neck, rear handle, **black** transfer 'DISTILLED AND BOTTLED BY/ WILLIAM JAMESON & CO/ WHISKY DISTILLERS THIS BRAND IS THE PROPERTY OF THE DUBLIN DISTILLERS/ ESTABLISHED A.D. 1752/ DUBLIN'. Curwen Bros Liverpool impressed p.m. Very good. £120-150+.



97. AULD LANG

SYNE WHISKY JUG. 6ins tall, flattened flask, top tan glaze, handle to side, **black** transfer pictorial scene showing Scottish piper & dancer to one side 'FOR AULD LANG SYNE/ JOHN EWING & COY 257 ARGYLE ST GLASGOW' to other. Very good. NR £80-120+.



98. MEMORIES KINGSWARE FLASK. (JL PG 31) 9.5ins tall, to top of chained silver stopper. Tall pear shaped flask - 6 characters in relief to front, further 2 portraits in relief to rear. Royal Doulton circle mark lion & crown. Very good. NR £120-150+.

Advertising

99. GILBERT RAE'S MULTI-COLOURED PRESSED TIN SIGN. 28 by 20ins, 'GILBERT RAE'S/ HIGH CLASS/ AERATED WATERS/ IN SCREW STOPPERED BOTTLES/ BALDRIDGE WORKS/ DUNFERMLINE/ BRANCHES ALLOA FALKIRK & PORTOBELLO' 3 bottles & factory buildings pictured. An all time 'classic', impressive, tin sign. Exc. NR £600-800+. (AB)

100. CHAS MARTYN WOODEN FRAMED MIRROR. 44ins long, 12.75ins wide, 'CHAS MARTYN F.S.M.C. LOND/ F.I.O. LOND/ SIGHT TESTING/ SPECIALISTS/ "KRIPTOK"/ "LEN CURVE" in gold & black lettering. Eye pictured with Art nouveau design, surround in white. Good. NR £80-120+.



101.



WATSONS MATCHLESS CLEANSER MULTICOLOURED FRAMED ADVERT. 22 by 16.75ins, Edwardian style row of parlour maids pictured gradually disappearing into the distance - holding baskets filled with Matchless Cleanser, packets to side. 'WATSON'S MATCHLESS CLEANSER/ IS THE BEST SOAP FOR ALL PURPOSES'. Rare for such a 'classic' showcase to appear on the open market! Very good. £350-400+.



CYCLE CO LTD/ COVENTRY MANUFACTURERS BY APPOINTMENT TO H.M. THE KING' coat of arms above. **Black & green** lettering on **white**. Outer edge rusting etc. Good. NR £150-200+.



Titled 'TEMPTATION'. A very attractive slightly lorry than unusual image. Very good. £300-350+.

104. WILLS'S WOODBINES COLOURED LAMINATED SHOWCARD. 20 by 15ins, dockyard scene showing ship being unloaded or loaded with lorry dockside. 'WILLS'S WOODBINES' packets of cigarettes pictured '10 FOR 4D/ 15 FOR 6D' to corner. Good. NR £60-80+.



102. PREMIER BICYCLES DOUBLE SIDED ENAMEL SIGN. 22 by 18ins, 'AGENCY FOR/ THA SALE OF/ PREMIER



105. FACCHINO ICE CREAM PAIR OF ORIGINAL ADVERTISING SHOP PROMOTION FIGURES. Plaster & composition, 22ins tall, boy & girl holding giant ice cream cones. 'RITZ' to cones 'ICE CREAM/ WITH A FACCHINO CONE' to stepped plinths. Some chipping & wear etc. £400-500+

106. AQUITANIA OCEAN LINER LARGE PRESSED TIN SIGN. 41 by 31.25ins, simulated



wooden framed tin sign with **multicoloured** image of the ocean liner 'AQUITANIA'. Some rust staining, pitting etc. but still a most impressive large sign. £200-300+.



ABSENTEE BIDDING FORMS

Following a reneged bid BBR insists **ALL** Postal Bid sheets **MUST LIST FULL C.C. details**
- otherwise bids **NOT ENTERED!**



107. MICHELIN DUNLOP TIN SHELF EDGE SIGNS. 18 by 1.25ins, 'MICHELIN TYRES' & 'INDIA TYRES', 'DUNLOP TYRE ACCESSORIES', 'DUNLOP HANDLEBAR GRIPS', 'DUNLOP TOOL BAGS' & 'DUNLOP RUBBER SOLUTION' mainly yellow, red & black colouring. (6) Good. NR £30-40+.



Miniature tins

108. ROWNTREES CACHOUS. 3 variations miniature cricket bats, 4.5ins long, 'ROWNTREES/ CACHOUS' plus tennis racket 4.25ins long 'CLARNICO'. (4) Good. NR £60-80+.

109. 3 TIN EGGS. 'BASSETTS EGG SHAMPOO CREAM' 2.75ins long. Plus 'LECITHINE GRANULEE LYON' 2ins long. Plus 'HATCHWELL' egg, 2.25ins long. (3) Good. NR £30-40+.



114. 2 WORLD GLOBE TINS. 'ROWNTREE & CO LTD YORK' 2.5 & 1.75ins. (2) NR £20-30+.



110. ROWNTREES MANTEL CLOCK TIN. 2 by 1.75ins, 'ROWNTREE'S/ YORK' plus Rowntrees trunk tin 2.25 by 1.25ins. Plus purse tin 2 by 2ins. (3) Good. NR £40-60+.



111. 3 APPLE SHAPE TINS. 1.75 & 1.5ins tall. (3) NR £20-30+.

112. 3 BUILDING SHAPE TINS. 'THE HUT OF LYNN HOME OF GOOD NUTS' 2.5 by 2.25ins. Plus clock tower tin 2.25ins tall. Plus oriental house tin 2 by 1.5ins. (3) NR £30-40+.



113. 3 BALL TINS. Rugby ball 2.25ins long, plus football tin 1.75ins. Plus baseball 1.75ins. (3) Good. NR £30-40+.



115. 3 SPINNING TOP TINS. 'RED SEAL' 2ins tall, plus 'ANDREWS LIVER SLAT' 1.5ins tall. Plus 'OXO MAKES BIG BOYS & GIRLS' 1.75ins tall. (3) NR £40-60+.





**116. ROWNTREES
MINIATURE BISCUIT
TIN.** 1.75 by 1.5ins,
'ROWNTREES/
CHOCOLATE/ BISCUITS'
coat of arms & Prince of
Wales
plumes.

Good. NR £20-

30+.



**117. JOHN
DRUMMOND &
SONS CURVED
BREAST POCKET
TIN.** 3.25 by 3ins,
'JOHN
DRUMMOND &
SONS GREENOCK/'



COLOUR PRINTERS ON TIN PLATE' **gold** lettering
on Scotch plaid background. Interior showing detailed
'Tin Canister Works' buildings 'JOHN DRUMMOND
& SONS COOPERS & VAT BUILDERS PACKING
CASE MAKERS IN WOOD ALSO TIN & ZINC
LTD GREENOCK' to rear.
Exceptionally rare promotional
tin. £80-120+.



Cabinets

**118. FRY'S CHOCOLATE SHOP
DISPLAY CABINET.**

31ins tall, to top of
pediment, 19.5ins
wide, 14.5ins deep,
glass door to rear with
2 glass shelves 'FRYS/
CHOCOLATE' in
white & black lettering
to mirrored pediment
'SOMERDALE IN
SOMERSET' in
recessed base lettering.
Very unusual lower
lettering. NR £250-
300+.



**119.
CADBURY'S
CHOCOLATE
SHOP DISPLAY
CABINET.** 27ins
tall, 26.25ins
wide, 15ins deep
glass sliding doors
to rear. 2 glass
shelves
'CADBURY'S/
CHOCOLATE' in
gold lettering to
front. NR £150-
200+.



**120. ZENO SHOP
DISPLAY CABINET.**

18.5ins tall, 10ins wide at base,
7.5ins deep wooden framed
cabinet with sloping glass
shelves 'ZENO' to pediment
'ZENO MEANS GOOD
CHEWING GUM' to sides.
An unusual small size cabinet.
**Zeno was a chewing gum
introduced
c. 1890.*
NR £60-
80+.



Eyebaths

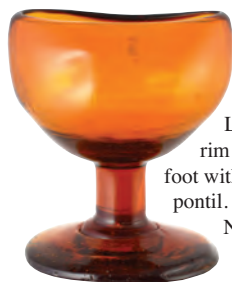


121. EYEBATH. 2.75ins
tall, **cobalt blue** glass,
unusual reservoir type with
spacer in between. Very
good. NR £40-60+



National stickers

All SummerNational lots carry
a small '2015 SummerNational'
provenance sticker.



122. FREEBLOWN EYEBATH. 2ins tall, **golden amber** glass. Large bowl with turned in rim on short stem. Circular foot with ground pontil. Very good. NR £40-60+



123. FREEBLOWN EYEBATH. 2.5ins tall, **turquoise blue** glass, tulip shape bowl with curved rim. Short stem on circular foot. Very good. NR £40-60+



124. FREEBLOWN EYEBATH. 3ins tall, **emerald green** glass bowl with slight turned in rim. Wine glass style stem on circular foot. Very good. NR £40-60+



125. FREEBLOWN EYEBATH. 2.5ins tall, **green/blue** glass, large bowl with turned in rim. Wine glass style stem on circular foot. Very good. NR £40-60+

Poisons & cures

126. WILSONS PATENT POISON BOTTLE. (DP Pg 60) 6.75ins tall, **bright green** glass triangular section with notched edges & vertical ribs. Embossed 'NOT TO BE TAKEN' & 'CAUTION' to side panels. '8oz' to base. Very rare large size. Very good. NR £250-300+. (NL)



127.

QUINES PATENT POISON BOTTLE.

(DP Pg 35 & 84) 4.75ins long, **light bluey aqua** glass, sloping shape embossed 'POISON' both sides on shoulder. '2oz' embossed underneath. Very good. NR £170-220+.



128.

QUINES PATENT POISON BOTTLE.

(DP Pg 35 & 84) 5.75ins long, **light bluey aqua** glass, sloping shape embossed 'POISON' both sides on shoulder. '4oz' embossed underneath. Very good. NR £170-220+.



129. DR MARTINS POISON BOTTLE.

(DP Pg 29 & 82) 6.5ins long, **light bluey aqua** glass u-bend bottle embossed 'THE MARTIN/ POISON BOTTLE/ PATENT' to one side 'POISON/ NOT TO BE TAKEN' to the other. Unusually no 'PATENTED' embossed to rear of bottle. Very good. NR £120-150+.



130. MANCHESTER HOSPITAL POISON BOTTLE.

(DP Pg 100) 9ins tall, large hexagonal **cobalt blue** glass poison bottle. Embossed 'MANCHESTER & SALFORD/ HOSPITAL FOR/ SKIN DISEASES' to 3 panels & 'POISON NOT TO BE TAKEN' to another ribs to other two. Extremely rare in this large size. Very good. NR £60-80+.





**131. MANCHESTER & SALFORD
POISON BOTTLE.** 6.75ins tall, **cobalt**

blue glass, hexagonal embossed to 3 panels 'MANCHESTER & SALFORD/ HOSPITAL FOR/ SKIN DISEASES'. Very good. NR £60-80+.



**134. CHEMIST SHOP
ROUND POISON BOTTLE.**

8ins tall to top of chisel stopper, **cobalt blue** glass shop round horizontally ribbed with 'LIN ACON. METH.' in **white** enamelled lettering 'POISON' below near base in **red**. Very good. NR £80-120+.



**132. FERGUSON'S
POISON JAR.** (DP Pg 74)

5.5ins tall, stoneware jar **tan** top, lower **off white** glaze, **blue** transfer. 'FERGUSON'S/ ARSENATE OF LEAD/ MANUFACTURED ONLY BY/ ALEXANDER FERGUSON'S & CO/ LTD/ GLASGOW LEAD & COLOUR WORKS' with 'POISON' in red above. Scarce wide mouth variant. Very good. NR £60-80+.



**133. CHEMIST
SHOP ROUND
POISON BOTTLE.**

10.5ins tall to top of chisel stopper, **heavy cobalt blue** glass shop round, horizontally ribbed with 'LIN./ A.B.C.' in **white** enamelled lettering 'POISON' below near base in **red**. Very good. NR £120-150+.



**135. WARNERS SAFE
CURE BOTTLE.** 11ins tall, **olive green** glass, embossed 'WARNERS SAFE/ CURE/ LONDON' with remnants of paper label to rear. The worlds **only** recorded 2 pint **green** London labelled Warners? Very good. NR £700-800+.. (AB)



Follow BBR Auctions on FB
Auction results, News & Updates regularly
added to Facebook - just 'friend' us!



136. DAFFY'S ELIXIR BOTTLE.

.ins tall, aqua glass, rectangular cross hinged section bevelled corners, applied lip. Heavily embossed 'TRUE/ DAFEY'S/ ELIXIR' to front 'DICEY/ & CO NO 10 BOW/ CHURCH/ YARD/ LONDON' to rear 'UNLESS THE NAME/ OF DICEY & CO/ IS IN THE STAMP/ OVER THE CORK/ THE MEDICINE IS/ COUNTERFEIT' etc. To all sides. Base cross hinge

moulds. Exc/ A1 - a pristine example of an early, rarely seen, type. NR £200-300+.



137. HANDYSIDE'S CONSUMPTION CURE

BOTTLE. 7.25ins tall, **blue** glass sauce bottle shape. Double collar lip embossed 'HANDYSIDE'S/ CONSUMPTION CURE' vertically to front panel. Britains ONLY true blue 'cure' bottle - of which only a handful are recorded! Very good. NR £600-800+. (AB)



**THIS SALE
STARTS AT
12 NOON
ON SUNDAY
5 JULY**

138. FISHERS SEAWEED

EXTRACT BOTTLE. .ins tall, **bright green** glass unique triangular shape with bulb neck. Embossed 'FISHERS/ SEAWEED/ EXTRACT/ MANX SHRUB/ ULSTERS' to one panel 'QUARRIES PATENT' to the other. Very good. NR £120-150+.



139. RADOMS MICROBE KILLER BOTTLE.

.ins tall, **red/ amber** glass square section body embossed 'GERM BACTERIOID FUNGUS DESTROYER' below shoulder. Central shield panel has man beating skeleton embossed 'WM RADOMS/ MICROBE KILLER REGISTERED TRADE MARK DEC 13 1887'. Very good. NR £120-150+.

140. LEE'S OINTMENT POT.

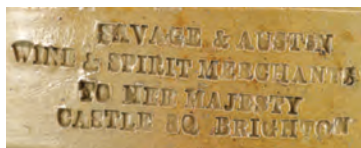
.ins tall, **white** glaze, **brown** transfer 'LEES'S OINTMENT/ PRICE 1/ 1 1/2/ MANUFACTURED ONLY BY THE PROPRIETOR/ 5 & 6 SMITH HILLS ST/ PAISLEY' with pictorial t.m. Stanley Castle Paisley. Lip chip repair. Remains a UK 'classic' rarity. NR £300-400+.



Salt glaze & early stoneware

141. LARGE PUB NAMED REFORM FLASK. 15.5ins tall, varying tan salt glaze, full figural of Prince Albert stood on oval plinth, crown by his side 'ALBERT' in raised lettering to plinth. Impressed to rear 'SAVAGE & AUSTIN WINE & SPIRIT MERCHANTS/ TO HER MAJESTY/ CASTLE SQ BRIGHTON'. (Couple of flakes above). Possibly neck restoration (some repainting). A unique (?) flask in this giant size. Good. NR £700-800+.

(DD)



143. LINCOLN SLAB SEALED REFORM FLASK. 6.5ins tall, top shiny brown glaze, lower grey/ green glaze, top modelled as Lord John Russel holding scroll, imp'd 'THE TRUE SPIRIT OF REFORM' slab seal below reads 'COOKS/ WINE & SPIRIT VAULTS/ WATERSIDE/ LINCOLN'. Imp'd to rear 'T. OLDFIELD & CO/ MANUFACTURERS/ CHESTERFIELD'. Minor base flakes. Very good. NR £400-600+. (AB)

142. LARGE REFORM FLASK. 14.5ins tall, all over tan salt glaze, full figural of Sir Robert Peel holding scroll 'BREAD/ FOR THE/ MILLIONS' in raised lettering, also holding sheaf of corn 'SIR R. PEEL' in raised lettering to plinth. Less than a handful recorded. Very good. NR £700-800+.



SALE DAY FLOOR BIDDERS

All items sold **AS SEEN**. Bidders must ensure lot/s meet personal condition standards.



144. FISH

FLASK. 12ins

long, varying **tan** salt glaze flask in shape of a fish (probably carp) scale

& fin details, cork to mouth. Imp'd B. COOPER

RAILWAY/ TERMINUS/ BRIGHTON' to top. 'BRIGHTON FISH' to side 'W NORTHERN POTTER/ VAUXHALL LAMBETH' underneath. Undoubtedly the very finest & most significant fish flask BBR has ever offered in almost 40 yrs, an absolute 'belter'. Very good. NR £800-1,200+. (DD)



145. DOULTON

PISTOL FLASK. 11.75ins long, **tan**

salt glaze flask in shape of a flintlock pistol, imp'd DOULTON & WATTS LAMBETH POTTERY/ LONDON'. Very good. NR £120-150+. (DD)



146. FULHAM POTTERY

PISTOL FLASK. 10.5ins long. **Brown** salt glaze flask in shape of a flintlock pistol imp'd 'FULHAM POTTERY' both sides. Very good. NR £120-150+. (DD)



147. PLYMOUTH SPIRIT

FLASK. 9ins tall, **brown**

top lower **tan** salt glaze, flattened shape, handle to rear imp'd

'COLLIER & DUMFORD/ WINE & SPIRIT MERCHANTS PLYMOUTH'.

An exceptionally, crudely misshapen & unusually colour varied. One of the finest of its type. Very good. NR £350-400+. (DD)





148. PUB NAMED SPIRIT FLASK. 7ins tall, **brown** top lower **tan** salt glaze ribbed sloping shoulders imp'd to front 'J. BUCKMASTER/ WINE & SPIRIT MERCHANT/ SWAN/ HUNGERFORD MARKET'. Impressed thumb print (?) to rear. Very good. NR £80-100+. (DD)



149. MOWBRAY GINGER BEER PORTER BOTTLE. 8.75ins tall, **tan** salt glaze imp'd 'PENINSULA/ AERATED WATER CO/ FINEST STONE/ GINGER BEER/ MOWBRAY'. An extraordinary, especially early, rarity. Very good. NR £200-300+. (DD)

150. SLAB SEAL BOTTLE. 4.25ins tall, **grey/green** glaze, small cylinder with short neck, shoulder seal reads 'S & H BRIDDON/ MANUFACTURES'. Tiny rim flakes. A 'unique' slab seal promotional sample for a well known Brampton Pottery. NR £250-300+. (DN)



151. DATED SCOTTISH FLAGON. 10.25ins tall, **brown** top, lower **off white** glaze, rear handle. 'JOHN MILNE/ ABERDEEN/ 1870' to scroll. Raised coat of arms below, knights in armour to sides. Raised drinking party figures, Prince of Wales plumes, face masks etc. all around. These early highly decorated flagons come along very rarely. Small lip chip & base flake. NR £500-600+. (DD)



152. EARLY TANKARD. 5ins tall, **tan** glazed top lower **grey** glaze, imp'd excise duty stamp or measure? Body hairline & some minor nibbles, still a very rare/ early item. NR £60-80+. (DD)



Black glass



153. EARLY SHAFT & GLOBE WINE BOTTLE.

7.75ins tall, c.1670-1680. **Dark olive green** glass, applied string rim. Base pontil, all over body patination, pitting etc. NR £500-600+.



154. DATED SEALED WINE BOTTLE. 10ins tall, **dark olive green** glass, squat cylinder applied collar lip, base pontil. Seal reads 'H ELLIS 1780'. (See Burton Vol 2 Pg 772). Very good. NR £300-400+.



155.

SEALED WINE

BOTTLE. 10ins tall, **dark olive green** glass, squat cylinder. Applied collar lip, base pontil. Seal reads 'H. ROE'. An exceptionally rare large size cylinder. Very good. NR £300-400+.



AFTER SALE PRICES REALISED

BBR posts sale results onto its website: www.onlinebbr.com alternatively you can find them on Facebook: **BBR Auctions** or email BBR for a pdf: sales@onlinebbr.com



156. DATED SEALED WINE BOTTLE. 8.75ins tall, **dark**

olive green glass, applied lip to long neck. Base pontil, seal reads 'R GASKELLY/ 1761'. (See Burton Vol 2 Pg 717). Slight body dullness. NR £300-400+.



157. DATED SEAL WINE BOTTLE.

6.75ins tall, quarter size narrow bodied cylinder, **dark olive green** glass.

Applied lip, basal kick-up pontil.

Shoulder seal with '1791'

(See Burton Vol 2 Pg 800). With stopper &

metal handle - extraordinary. A very rare small size sealed bottle. Very good. NR £300-400+.



158. SEALED WINE BOTTLE.

9.75ins tall, **dark olive green** glass, applied string rim, squat shape. Neck sunk, quite dramatically, into shoulder. Shoulder seal with initials 'T.G.'. Deep kick-up base. Most unusual form. Very good. NR £250-300+.



159. SEALED CYLINDER WINE BOTTLE.

11.75ins tall, dark olive green glass, applied collar lip, kick-up pontil base. Seal with griffin & initials 'RHC' applied upside down. The initials RHC are for Robert Henry Clive

(1789-1854) who was grandson to Major General Robert Clive (Clive of India).



SALE DAY FLOOR BIDDERS

All items sold **AS SEEN**. Bidders must inspect to ensure lot/s meet personal condition standards.



160. WINE BOTTLE. 13.25ins tall, **dark olive green** glass, cylinder with very long neck, applied string rim. Kick-up base. Remnants of original neck sealant. Extraordinarily rare. Very good. NR £120-150+.



161. ABERDEEN ONION SHAPE WINE BOTTLE. 9.75ins tall, **dark olive green** glass, applied collar lip, base pontil. All over stipple engraved stag, tree & bird, peacock with 'DUNCAN & JANE CAMERON/ ABERDEEN' to front. Rose & twin hearts below. Very good. NR £150-200+. (CM)



162. ONION SHAPE WINE BOTTLE. 10 ins tal, **dark olive green** glass, applied collar lip, base pontil, white metal mount to neck & shoulder. All over stipple engraved 'MR PURVES BANKER GLASGOW' to front. Birds in tree branches below with stag, masonic symbols & 'LET GLASGOW FLOURISH' to side & rear. In manufacture body flaw, still one of the best of its type we have ever offered?. Very good. NR £150-200+.



163. SMALL ONION SHAPE WINE BOTTLE. 7ins tall, **dark olive green** glass applied collar lip. All over stipple engraving featuring ship, bird etc. 'HELLEN/ CARMICHAEL 1875' with heart to front. Delightful and unusual small size? Very good. NR £80-100+.



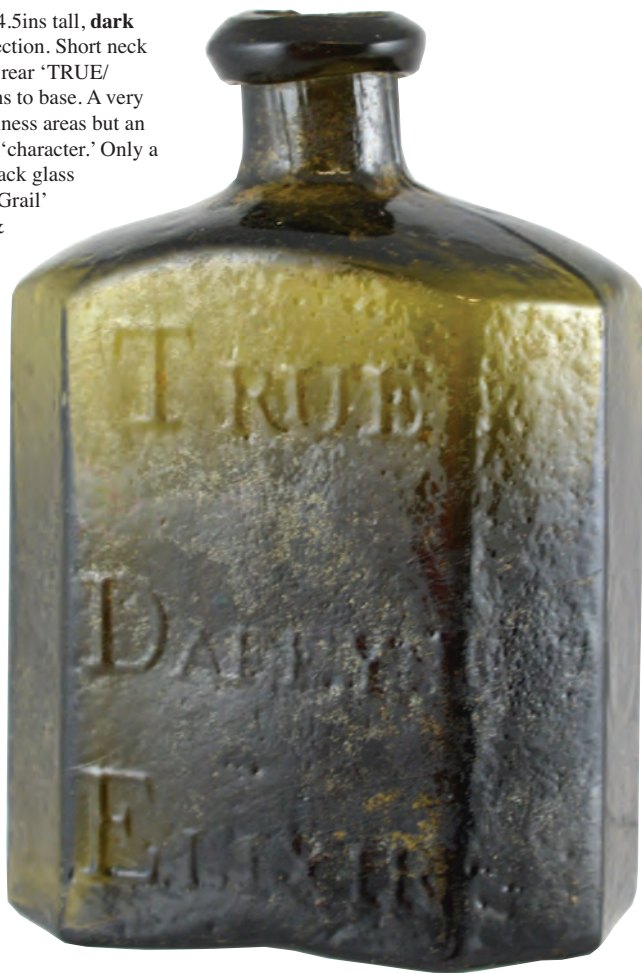
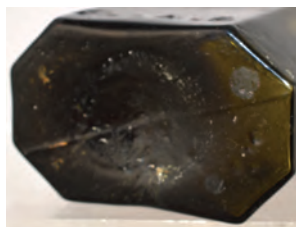
164. NORWEGIAN HUNTING FLASK. 7.25ins tall, **cobalt blue** glass, round shouldered, flattened shape flask. Smooth lip, base pontil scar. Embossed with what appears to be a glass blower figure. Area of dirt inside which should clean easily. Very good. NR £60-80+.



EMAILS BIDS

Email bids to: sales@onlinebbr.com should add full name, address & credit card details, or fax: 01226361561. **YOU MUST ALSO POST BID SHEET - EVEN ARRIVING AFTER THE SALE**

165. DAFFY'S ELIXIR BOTTLE. 4.5ins tall, **dark olive green** glass, rectangular cross section. Short neck with applied lip, embossed to front & rear 'TRUE/DAFFY'S/ ELIXIR' cross hinge seams to base. A very early Daffy's variant. Slight body dullness areas but an exceptionally rare offering with great 'character.' Only a handful of such ever recorded - the black glass Daffy's is considered to be the 'Holy Grail' by many early medicine collectors - & this example bears all the 'typical' characteristics associated with such. £2,000-3,000+.



**THIS SALE
STARTS AT
12 NOON
ON SUNDAY
5 JULY**

166. LEECH VESSEL. 9ins tall, all over a varying **tan** salt glaze, handles to sides, perforation holes to shoulders. 'LEECHES' in raised lettering to an applied sprig type scroll, with cut out sprigged coat of arms below. Doulton & Watts Lambeth Pottery imp'd mark to rear. Some nibbles/ flakes. An exceptional offering, possibly unique (?) in this size. Very good. NR £4,000 - 6,000



CONDITION - help us to help you!

If you spot condition differences/ faults/ repairs which we have not please advise BBR staff. As always we will announce such amendments prior to the sale.

167. EARLY ONION SHAPE WINE BOTTLE.

6ins tall, 1690-1720 **dark olive green** glass, applied string rim, kick-up pontil base. Seal depicts an armorial coat of arms, crisply struck. Knights head above shield. Full body sheen. Simply a very fine example of a 'classic' early sealed black glass form. Very good. NR £1,200-1,500+.



**follow BBR Auctions
on Facebook**

Auction results, News
& Updates regularly added
to FB simply befriend us!

168. MELTON MOWBRAY PLAQUE (KM 694) 11.25ins by 9ins, **multicoloured** ceramic plaque
'PATRONIZED BY/ HIS GRACE THE DUKE OF RUTLAND/ AND THE GENTLEMEN OF THE MELTON
HUNT/ EVANS MELTON MOWBRAY/ RAISED PIES/ SOLD HERE BY APPOINTMENT/ NONE ARE
GENUINE WITHOUT THE MAKERS NAME ON EACH PIE'. Pie pictured with Duke of Rutlands coat of
arms. Breathing holes to rear. Only one known. Very good. NR £5,000-6,000+. (AB)

Sale end.



Notes

email: **sale@onlinebbr.com**
www.onlinebbr.com

Elsecar Antique Centre open 7 days a week 10am - 5pm
Upcoming auction lots displayed in BBR's green cabinets inside

BBR Terms & Conditions

CATALOGUE CONDITION TERMS:

As much care as is practicably possible is given to descriptions. Many items are of an age or nature precluding their being in pristine condition. We give serious consideration to concerns brought to our attention but reserve the right to disagree. Any additional information is generally mentioned before bidding begins but it is often not possible to contact absentee bidders at this point.

BBR are always happy to answer questions before a sale but it is your responsibility to re-assure yourself before purchase. Generally we will indicate our judgement of lots quality & condition, giving due consideration to age & rarity. For guidance purposes only the following terms are used to give a feel of this judgement:

Cleaned / Restored: An object has been subjected to some restoration. Typically with glass items surface may appear tumbled or dipped, to remove unsightly patina or chips, or restored with resin. A ceramic item may have had portions replaced or re-glued. We recommend you examine an item or telephone for AB's assessment of the extent of such. Cat. descriptions may make reference to damage or restoration but omission of such does **NOT** imply a lot is free from defects, nor does a reference to a defect imply absence of others.

Good: We judge it to be a good example, displays well, minus overtly unsightly damage. An item that is not pristine with signs of use & age - might include scratches, tears, surface faults.

Very Good: The item displays minor signs of wear, apparent on close inspection. This may include inconsequential chips or flaws, some corrosion to metal parts, or minor damage in unseen area (*ie base or rear*).

Excellent/ A1: An item as near to possible pristine, taking into account age. A bottle might for instance have base wear but full body sheen & strong embossing - no chips or cracks. Any time of manufacture flaws or patina of age in this instance deemed either part of the character, or not detracting.

IN SHORT

Many items are of an age/ nature precluding their being in pristine condition. Some catalogue descriptions may refer to damage/ & or restoration. Omission of such does not imply a lot is free from defects, nor does any reference to a particular defect imply any absence of others.

IMPORTANT:

No statement in this catalogue shall be deemed a warranty, representation or assumption of liability in respect of date, size, condition, quality, importance or provenance.

Ultimate judge, & onus, falls with the buyer.

BIDDING

The highest bidder is deemed the purchaser. Advances on each lot determined by the Auctioneer.

BIDDING FOR SOMEONE ELSE?

If you intend to purchase items for another person it

is important you obtain a SEPARATE bidding number.

POSTAL BIDDING

Performed on behalf of absent buyers to buy items as cheaply as possible competing with other bids. No charge for this.

POSTAL BID SHEETS

Tied bids - the first to arrive secures. This can result in bidding the same price as someone else but **NOT** securing. It is in your best interest to return forms soon as possible. **If you tel or fax bids through you MUST ALSO post off the bidding form, even though it may arrive after the sale.**

ESTIMATES

Estimates are purely a guide - taking into account condition, rarity, & current market interests. Particular rarities, highly desirable, or unusual items can, & often do, exceed estimates.

TELEPHONE BIDDING

ONLY tel bids STARTING at £200+ accepted due to staffing logistics.

RESERVES

'NR' indicates **items NO RESERVE**. Other lots may carry reserves, but not always.

PAYMENT

Tel/ postal/ fax & floor bids are a legally binding contract. Purchases to be paid before taken away. Cheques to BBR Auctions. **Overdue accounts charged 3% after 21 days.**

CREDIT CARD PAYMENTS

BBR accepts: **Visa, MasterCard, Visa Delta & Switch.**

Renegotiated bank charges now just a 3% levy for this.

You must complete your credit card

information on postal bid sheet, inc. EXPIRY DATE, ISSUE No. & issue date for Switch.

POSTAGE

Postal purchasers **MUST** advise how they wish items sending.

Full p & p costs borne by purchaser. Following a sale we pack, weigh, & invoice for total amount, inc. p & p.

POSTAL BUYERS

Packing & weighing can take one working week to complete - **please remain patient.**

BBR PACKING

Generally our costs are much less than half competitors - such as Mailbox etc. We try to keep costs low: packing time & materials used. We have extensive experience with all manner of shapes, sizes, & fragility, which may require special boxes! Very bulky or heavy items we suggest carriers rather than Parcel Force. If you have a preferential carrier **please advise when forwarding bids.**

INSURANCE

BBR can insure goods in transit **IF REQUESTED**. **UK PO rates:** Extra insurance up to £1,000 goods value, £3.00 up to £2,500 value. **NOT** done unless specifically requested at time of bidding. **Please familiarise yourself with P.O. terms & conditions of insurance.**

OVERSEAS PURCHASERS

Insuring goods requires declaration of **FULL** value. You decide disadvantages/ advantages regarding customs - & advise (on bidding sheet).

AGENTS In all cases BBR act only as agents between Vendor & Purchaser.

COMMISSION 15% buyers premium on hammer + vat.

PRICES REALISED: Downloadable off BBR website: www.onlinebbr.com as a pdf,
OR send/ leave an s.a.e., **OR** pick one up from a show, **OR** included at back of next cat.

HELP US TO HELP YOU! If you spot damage or condition differences we have missed
PLEASE INFORM A MEMBER OF STAFF!

Postal bidders **MUST** telephone if they require **more detailed, & accurate,**
descriptions of items in this catalogue.

Before bidding by post, or at the sale, it is important to read & fully
understand Terms & Conditions

Bidding Increments

UP TO £50 rising in bids of £2, £5, £7, £10 etc.

After £50 bids rise in £5 steps. **After £100** bids rise by £10.

After £200 bids rise by £20, £50, £70. **After £500** bids rise in
£50 steps. **After £1,000** bids rise in £100 steps & toward
conclusion at the auctioneers discretion.

Want additional information about any lot?

BBR attempts to help postal bidders buy with ease, &
confidence. Cataloguing errors/ descriptions can/ do
occur which may not provide the fullest & most accurate
information needed for absentee bidding.

The last thing we want is anyone to receive
something not what they thought it was.

We therefore ask you to telephone for a
more specific condition report.

We suggest tel. - leave lot numbers interested in, & call
back 10 mins. later, when items will be by telephone.

BBR Elsecar

presenting Britain's
BIGGEST
Shows & Auctions
4 times a year:

2015 BBR w/e's

• Oct 3 & 4

Autumn Extravaganza

2016 BBR w/e's

• Jan 23 & 24

BBR's WinterNational

• April 23 & 24

Spring Extravaganza

• July 2 & 3

the 26th UK SummerNational

• Oct 1 & 2

Autumn Extravaganza



* NB: dates could maybe alter - please check BBR website:
www.onlinebbr.com or BBR magazine for updates.



The **ONLY** magazine
you need to stay
“completely in touch”



Subscribe today online:
www.onlinebbr.com
Paypal, ch, c.c. etc



MORE PAGES
MORE Research
MORE Articles
MORE Classifieds
MORE News stories

**36 yrs & still
going strong!**



UK 1yr £26 inc p & p. Due to
unpredictable post increases no 2 yr subs.
USA & Aus 1yr £42. Eur 1yr £30.
ALL overseas magazines sent Air Mail

BBR Auctions, Elsecar Heritage
Centre Nr Barnsley, S. Yorks,
S74 8HJ tel: 01226 745156
email: sales@onlinebbr.com
www.onlinebbr.com

