

Sunday 23th August

Exeter Show *Exeter Racecourse* EX6 7XS

BBR 'on the road' Entirely Unreserved Auction

Comm. 15% on hammer, immediate payment taken - we bring lots to you. Kick off 'noon 'ish', take approx 40 mins.

E1. PURE DEVONSHIRE CLOTTED CREAM. All cream, black transfer, cylinder. 4 large lines of print. Exc/ A1



E3. FERGUSON/ PLYMOUTH blue glass acid etched soda syphon. Pewter top complete. Twisting body ribbed style. Very good. (GM)



E2. HAWKES & SHEPHEARD/ NEWTON ABBOT g.b. All tan std, black transfer, entwined initials to centre. Good. (CM)



E4. W. BISCOMBE/ PLYMOUTH g.b. trio. 2 x all white, std, other example ch, t.t., c.c. Each on features entwined initials t.m. & quite different transfer style. Good. (3) (GM)



E5. J.H. HENKES pictorial sealed gin. Black glass, 11ins tall. Lovely 'pig snout' style flattened lip. A really well struck seal. Minor body wear. (CM)



E6. PLYMOUTH acid etched standard codd. 6oz aqua codd bottle with 2 lines of acid etched writing 'T E Pratt/ Plymouth. Exc. (GM)



E7. ORIGINAL EXETER HEAVITREE BREWERY BEER BOTTLE LABELS.

10 each of A: Heavitree Special, B: Bass & Co Pale Ale. C: Heavitree Light Bitter Ale. D: Heavitree Oatmeal Stout. Exc. (40) (GM)

Provenance stickers

BBR is dispersing several collections which carry provenance initials:

NL = Norman Lewis

KB = Kevin Boyle

CM = Chris Mortimer

GM = Garth Morrison

MH = Michael Harris

AB = Alan Blakeman

BBR's remaining 2015 'On the Rd' auctions
Sunday 13 September Chessington KT9 2JS

FREE pdf's pre-order off BBR website:

www.onlinebbr.com Results FREE after on BBR's website

Tried • Tested • Trusted
www.onlinebbr.com
more sales...
more often



E8. ANTICE & CO/ BOTTLED IN/ PLYMOUTH g.b. All white, std, 3 lines impressed writing picked out in blue. Kennedy p.m. Minor wear. (GM)



E9. LANEY'S DAIRY/ CENTRAL/ BOURNEMOUTH cream pot. T.t. church shape, black transfer. Minor bottom edge nick otherwise fine.



E10. DENNIFORDS LTD/ PLYMOUTH g.b. All white, std, black transfer - prominent coat of arms central t.m. (GM)



E11. GEORGE HAWKE & SON/ FOWLEY footwarmer. Brown stopper & brown top section & knop end. Good. (GM)



E12. PLYMOUTH GREEN GLASS PICTORIAL BEERS. 1. K NAPMAN/ HERB BEER, lady pict. 2. E GIBBENS, soldier pict. Both very good. (2) (GM)



E13. HARDENS STAR HAND GRENADE. Spherical ribbed blue glass form, double collar lip. Embossed around centre & to middle.



E14. MINIFIES/ DEVONSHIRE CREAM/ ... WESTON SUPERMARE. 4.5ins tall, minor rim rust/ hairline, should clean. Highly detailed black transfer.



E15. DENNIFORDS PLYMOUTH g.b. duo. 1. All tan c.c., 4 lines black transfer printed diagonally. 2. All white, std, 4 lines black transfer near base. Good. (2) (GM)



E16. HEARDER/ & COMPANY/ TORQUAY black glass sealed wine. 9ins tall, large body seal to side, 3 part mould, blob lip. Base embossed 'P & R/ BRISTOL'. Some wear.



E17. WILLIAM SMITH/ MILTON BRIDGE 6oz aqua codd. Black glass marble, heart pict. t.m. Rear embossed 'RICH COOPER & CO LD/ MAKERS/ PORTOBELLO'. Very good. (GM)



ABSENTEE BIDS
Absentee bids to be with
BBR no later than
Thursday prior or email:
sales@onlinebbr.com



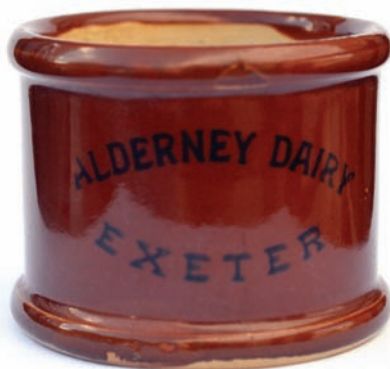
E18. DEVONPORT
group of 4 minerals. 3
codd's - 10oz Crocker &
Son, & 2 6oz examples -
W Dubbin & G Fry, plus
amber beer Salcone &
Speed. Good. (4) (GM)

E23. NEWQUAY
COMMEMORATIVE MUG.
3.4ins tall, highly detailed transfer
to front & rear (round handle).
Celebrates the visit of "their Royal
Highnesses... Prince & Princess of
Wales/ ...June 8/ 1909. Rim flake.
Great looking regional piece.
(GM)



CONDITION Before bidding please ensure
items meet your condition requirements - so
INSPECT! On sale day **ALL** items sold
AS SEEN - NO RETURNS

**E19. ALDERNEY DAIRY/
EXETER** all brown. Wide
bodied cream cylinder. 2.3ins
tall, black transfer. Very good.



**E20. J H FERGUSON & SONS/ GINGER/
BEER/ PLYMOUTH.** Striking all white ch,
c.c., strong black transfer. Very good. (GM)



E24. SHEARED LIP INKS GROUP.
Tallest 3.3ins, octagonal, square
(chamfered corners) & boat - 3 blue,
2 green, 1 aqua. (6) Good. (MH)



E21. PINT GREEN LONDON
WARNERS. 9.5ins tall, strong
embossing, heavy blob lip. Minute rear
base flake otherwise excellent - nay a
boooootiful cure classic!!!!



E25. EXETER/ PENNY DINNER
SOCIETY plate. 10.1ins diam, all
cream, central blue belted transfer &
outer border. Worn. Early? (GM)



**E22. G TROUT/
STONEHOUSE/ DEVON g.b.**
duo. Both with black transfer
within outer heavy border. One all
white std, other t.t., std. Both very
good. (2) (GM)

E26. GUERNSEY
AQUA MINERAL
DUO. Tallest 7.1ins
tall, both from the
Guernsey Aerated
Water Co featuring
hamilton pict. t.m.
One squat
champagne form,
other with partial
patent metal
closure. (2) (GM)



E27. PRICES/ PATENT/ CANDLE/ COMPANY. Bright cobalt 'classic' wedge shape medicine, heavily embossed across front with 5 lines, plus diamond registration at the bottom. Exc.



E28. J H FERGUSON/ PLYMOUTH. 1. Std, all white, blue transfer. 2. Ch, tan example '...& Son'. Both very good. (2) (GM)

E32. COX & SONS/ PURE FRESH CREAM/ CARDIFF MILK SUPPLIES. Dinky 3ins tall, tan glazed pot, black transfer. Very good.



E33. CRATE OF PLYMOUTH CODDS. 6 & 10oz aqua examples. Various firms, some pictorials, one a 'Codd's Patent'. Generally good. (20) (GM)



E34. DATED BLACK GLASS WINE. 11.5ins tall, heavy black glass, large lower body seal 'ROUSDEN/ JUBILEE/ 1837'. Very good. (CM)



E29. LISKEARD FOOTWARMER. 13ins tall, all cream with red brown top end/ knob. Black transfer 'William George/ Fore Street/ Liskeard'. Very good. (GM)



E30. BROOLENADS DAIRY/ RICH/ CREAM/ PORTSMOUTH & SOUTHSEA'. 5.25ins tall. Lower cream, top red brown. strong black transfer. Minor rear shoulder flake, otherwise very good.



E31. E GIBBENS/ PLYMOUTH std, all white g.b. Figural pictorial t.m to centre. Needs a little clean - otherwise very good. (GM)

E35. BUCKFASTLEIGH CO-OP JUBILEE SOUVENIR TEAPOT. 5ins tall, delightful blue transfer to front & across lid. Celebrating 100 years - 1819 to 1919. Pict. hand shaking t.m. Handle hairline. (GM)



E36. HMS VICTORY/ PORTSMOUTH posy holder. Squat 2.8ins tall form, dark blue glaze with multicoloured pictorial to front depicting various battle ships!! Very good.



POSTAL (or email) BIDS

Should reach BBR no later than Thursday prior to the sale
email or tel to double check: sales@onlinebbr.com



E37. SYMOND'S/DEVONSHIRE CIDER ashtray. 4ins diam, squat circular form with metal fitment to centre. Cream body, green lettering, multicoloured fruit images each side. Good.



E38. TENBY porter/ g.b? Champagne, t.t., string rim. '...Bottled by/ George Chiles/ Wine Merchant/ High St...'. Very good. (CM)



E39. PLYMOUTH CO-OPERATIVE SOCIETY album of black & white photographs. 18 in all. Most depict various department lay-outs. Very period!! Good. (GM)



E40. TORRINGTON GALTEE MORE PATENT g.b. All white, std 'R M Snow Company/ Wholesale/ Tea Merchants/ grocers...'. Price p.m. Very good. (CM)



E41. STARKEY KNIGHT & FORD/ BARNSTAPLE. Std, t.t. Knight above entwined initials t.m. Minor base flaw. Good. (CM)



E42. SIDMOUTH flat sided flask. 10.5ins tall, t.t., padded flat sides, curved shoulder with small rear handle. Boldly imp'd '120/ H NEWTON/ SIDMOUTH'. Very good.



E43. SALT GLAZE BARREL. 11ins tall, flattened barrel with horizontal 'retainers'- 2 at top, 2 lower. Detailed coat of arms sprig (slightly worn). Brass tap. Doulton & Watts p.m. Good.



E44. DREGHORN CO-OPERATIVE teapot. Blue transfer to front & rear (different) with multicoloured floral decorated lid. Celebrating the Jubilee '...1876-1926'. Very good. (GM)



CONDITION REPORTS

Absentee bidders can

tel: 01226 745156 email:

sales@onlinebbr.com



E46. DEVON AND SOMERSET valve codd. 10oz aqua, complete with valve. 'Ross & Company Limited' with 3 mineral water bottles t.m. to centre. Heavily embossed to rear. Minor haze/ wear & lip crack. (GM)

E45. BOURNEMOUTH g.b. duo. 1. South West Min'l Water Co/ Wimborne, Swanage Castle pict. All white std. 2. All tan 'Bedford & Burniston'. Both good.



E47. H LEWIS/ SODA WATER... PLYMOUTH. Std, all white, black transfer - 7 lines. Scarce stonie. Good. (GM)



E48. KERSWELL & GRAFTON/ EXETER g.b. All dark tan, std. Striking (sic!) large pictorial of Dave Mackeen beating Chris Russell!! Price p.m. Very good.



E49. E PETTER & SON/ BARNSTAPLE mineral water trio. 1. All white std g.b. 2. Flat based hamilton. 3. Sml hamilton. All with anchor t.m. (CM)



E50. CLASSIC SEALED CYLINDER. 10.2ins tall, black glass freeblown cylinder (delightfully crude), Heavily struck mid body seal 'LEVENS' Exc/ A1.



E51. BLANDFORD GINGER BEER. 8.2ins tall, ch., t.t., c.c. Oval black transfer 'J L Marsh & Sons Ltd/ Stone Ginger Beer.....' Some minor rusting - should easily clean. Good.



E52. BOSCOMBE/ AND/ WESTBOURNE cream pot. Off white/ cream bodied pot 3.9ins tall, black transfer ((5 lines writing plus foliate swirls) 'Parsons Dairies/ Pure Cream.....'. Good.



FULL RESULTS

Posted on BBR website; www.onlinebbr.com on Monday or Tuesday after the Show/ sale, also dropped onto all UK forums, & Facebook - BBR Auctions - or simply email AB: sales@onlinebbr.com for the full pdf afterwards.

BBR Terms & Conditions of sale

CONDITION ALL ITEMS SOLD AS SEEN. Buyers must satisfy themselves of condition. **STRICTLY NO RETURNS**

Many items are of an age/
nature precluding their
being in pristine condition.
Some catalogue
descriptions may refer to
damage/ & or restoration.
Omission of such does not
imply a lot is free from
defects, nor does any
reference to a particular
defect imply the absence of
others.

IMPORTANT
No statement in this
catalogue shall be deemed a
warranty, representation or
assumption of liability in
respect of date, size,
condition, quality,
importance or provenance.
The ultimate judge, and
therefore onus, is with the
buyer.

BIDDING
The highest bidder is deemed
the purchaser. Advances on
each lot determined by the
Auctioneer.

**BIDDING FOR SOMEONE
ELSE?**
If you intend to purchase
items for another person it
is essential you obtain a
**SEPARATE bidding number
AND PAYMENT DETAILS.**

POSTAL BIDDING
Performed on behalf of absent
buyers trying to buy items as
cheaply as possible competing
with other bids. No charge for
this.

POSTAL BID SHEETS
Tied bids - first to arrive
secures - this can result in
bidding the same price as
someone else but **NOT**

securing. It is in your best
interest to return forms soon
as possible. **If you tel or fax
bids through you MUST
ALSO post off the bidding
form, even though it may
arrive after the sale.**

EVERYTHING OFFERED NO RESERVE

PAYMENT
Tel/ postal/ fax & floor bids
are a strictly legally binding
contract. Purchases must be
paid for immediately.

CREDIT CARD PAYMENTS
Not available on sale day as
away from BBR office. Postall
successes conducted upon
return..

POSTAGE
Postal purchasers **MUST**
advise how they wish items
sending. Full p & p costs
borne by purchaser. Following
a sale we pack, weigh, &
invoice for total amount, inc. p
& p.

POSTAL BUYERS
Packing & weighing can take
one working week to
complete - **please remain
patient.**

BBR PACKING
**Generally our costs are
much less than half
competitors - such as
Mailbox etc.** We try to keep
costs low: packing time &
materials used. We have
extensive experience with all
manner of shapes, sizes, &
fragility, which may require
special boxes! Very bulky or
heavy items we suggest
carriers rather than Parcel
Force. If you have a
preferential carrier **please
advise when forwarding
bids.**

INSURANCE
BBR can insure goods in
transit **IF REQUESTED.**
UK PO rates: 75p up to £150
goods value, £1.35 up to
£500 value. **NOT** done unless

specifically requested **at time of bidding.**
**The PO does not insure for pottery or glass -
only consequential loss**

OVERSEAS PURCHASERS
Insuring goods requires declaration of **FULL** value.
You decide disadvantages/ advantages regarding
customs - & advise - on bidding sheet.

AGENTS In all cases BBR act only as agents
between Vendor & Purchaser.

COMMISSION 15% buyers premium on hammer
plus VAT.

PRICES REALISED: Email: sales@onlinebbr.com,
also downloadable off BBR website:
www.onlinebbr.com, OR send a stamped addressed
envelope.

HELP US TO HELP YOU! If you spot damage or
condition differences we have not **PLEASE INFORM
US!**

**before bidding by post, or at the
sale, it is important to read, fully
understand & accept BBR's Terms
& Conditions**

www.onlinebbr.com

BIDDING INCREMENTS

UP TO £50 rising in bids of £2, £5, £7, £10 etc.

After £50 bids rise in £5 steps. **After £100** bids rise by £10.

After £200 bids rise by £20, £50, £70. **After £500** bids rise
in £50 steps. **After £1,000** bids rise in £100 steps

Toward conclusion rises at auctioneers discretion.

**Want additional information
about any lot?**

**The last thing we want is anyone
to receive something not what
they thought. We therefore ask
you to tel. for a more specific
condition report**

**Tel., leave lot numbers interested in,
call back 5 mins later, when items will
be by the phone for AB to describe.**