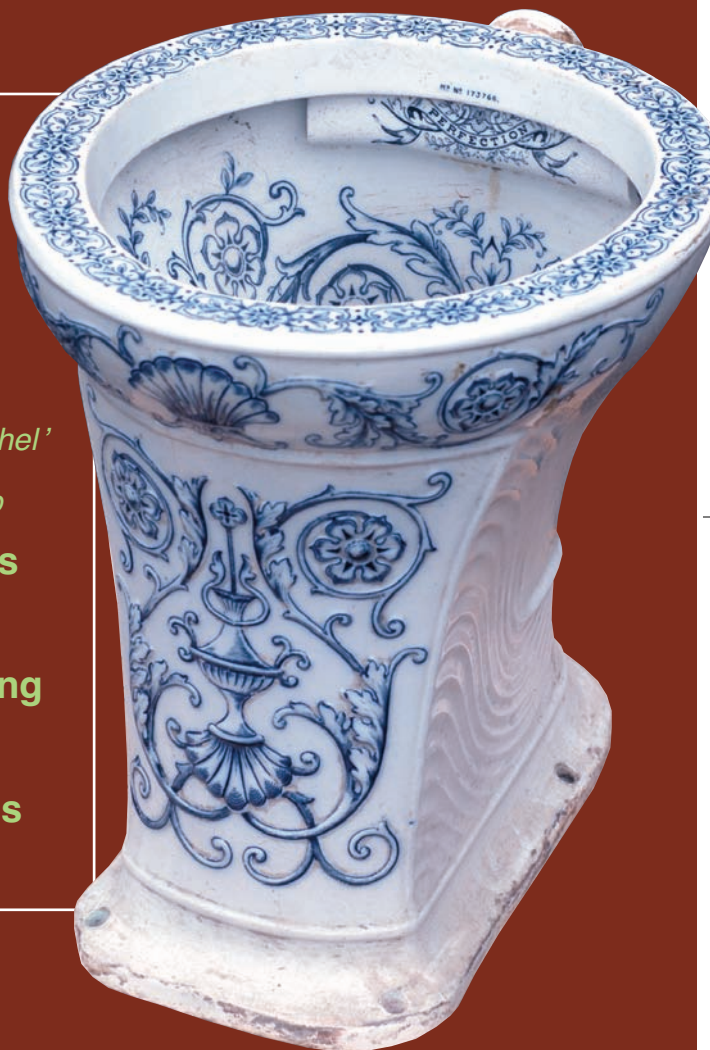




presents  
**Winter Wonders**

**F**Anti□ue Toilets  
**F**English pottery  
**F**Pharmacy  
**F**Kitchenalia  
**F**Cream pots  
**F**Teakettle Inks *p sthel'*  
**F**Pot lids *seø p & p b*  
**F**Tills & Typewriters  
**F**Breweriana  
**F**Anti□ue Advertising  
**F**Salt glaze  
**F**Sealed black glass  
*p MORE! t*



**Friday 21 November**  
**Saturday 22 November**

premiu e to vcr  
doors i ar auction rr ar



# BBR's 'Winter Wonders'

## Preview

**FRIDAY, Milton Hall, 4-7pm**  
opposite the Heritage Centre

## Auction

**SATURDAY, Milton Hall**  
opposite the Heritage Centre  
**Doors open 9am Auction 11am**

Postal, tel. (*book lines early!*)  
& fax bidding facility.  
Low cost after sale p & p worldwide  
**Buyers premium 15%**  
**plus vat - only on premium**

**FREE PARKING**  
**ACCOMMODATION:** email BBR  
for list - good 'Encore' deal?



*Catalogue prepared by Frank Burgin, Clare Bell & Alan Blakeman*

**BBR, Elsecar Heritage Centre, Nr Barnsley, S Yorks., S74 8HJ**  
tel: **01226 745156** fax: **01226 361561** email: **sales@onlinebbr.com**

**FREE PARKING**

**ACCOMMODATION:** email BBR for list - good 'Encore' deal?

## Collector provenance stickers

BBR is selling a number of large collections all bearing a 'provenance' sticker. Bracketted initials denote who from: CM = Chris Mortimer  
JR = John Rowe NL = Norman Lewis HH = Henry Horne KB = Kevin Boyle IM = Ian McKenzie  
AB = Alan Blakeman DD = Dr Dudley Davidson

the Chris  
Mortimer  
collection



John  
Rowe  
collection



the Norman  
Lewis  
collection



the Henry Horne  
Ink collection



the Kevin  
Boyle  
collection



the Ian  
McKenzie  
collection



the Alan  
Blakeman  
collection



the Dr Dudley  
Davidson  
collection

**Viewing stops generally approx. 10 mins. prior to sale start, 11am**  
**All lots sold 'as seen' on sale day. Everyone should view & inspect goods beforehand/ accept**  
**BBR's Terms & Conditions (see rear of cat).**

**Payment & collection can take place throughout/ during the sale.**

**1. JAPANESE BRONZE FIGURE.** 9ins tall, heavy, bronze, oriental figure of a seated man, drinking vessel in hand with oriental base marks. NR  
£300-400



**2. JAPANESE BRONZE FIGURE.** 13.75ins tall, of stooping elderly gent. Some arm damage. NR  
£150-200+



**SALE DAY FLOOR BIDDERS**

All lots sold **AS SEEN**. Bidders must ensure items meet personal condition standards.



### Kitchenalia

#### 3. UNCLE TOM & EVA JUG.

8.5ins tall, **white** glaze with **blue** pictorial transfers featuring black people with song titles etc. Uncle Tom & Eva pictured below spout 'MY FAD AS HOPE/ ME MODERS JOY/ MY DARLING LILY/ CREOLE BOT' to front 'BUFFALO GALS CANT YE COME OUT TONIGHT... OB DE MOON' to one side 'I PLAYS UPON DE BANJO/ AND DEY CALL IT LUCY LONG...'. Old rivet repair to pouring spout. NR £40-60+. (GM)



#### 4. LARGE KEILLERS PRESERVE JAR.

8ins tall, **off white** glaze, **black** transfer 'JAMES KEILLER & SONS/ DUNDEE/ MARMALADE/ GRAND MEDAL... 1873... LONDON 1862'. Rare size. Very good. NR £30-40+.



5. EGG BEATER. 8.75ins tall, **white** glazed cylinder shape **black** transfer 'LIGHTNING GRAFTONS/ SIZE 1/ PATENT 11073/ EGG - BEATER' complete with metal plunger. Small base chip. NR £20-30+. (GM)



**TERMS & CONDITIONS** are printed to catalogue rear. All bids accepted on the understanding these have been read & accepted

#### 6. THE BUNGALOW

**FOOTWARMER.** 10.25ins tall, flattened square shape, **off white** glaze, **blue** transfer 'THE BUNGALOW/ FOOTWARMER REGISTERED NO 628877/ DENBY STONEWARE'. Very good. NR £20-30+. (GM)



#### 7. EARLY PATENT MILK BOTTLE.

8.5ins tall, to top of wired on stopper 'SANITARY MILK JAR/ PATENT NO 1721'. Good. NR £20-30+. (GM)



#### 8. PATENT FLAT IRONS.

Includes **black & blue** enamelled gas iron 'CLARKES STOVE CO LTD NO 375/ FAIRY PRINCE' plus 2 other irons. (3) NR £20-30+. (GM)



#### 9. LONDON CERAMIC TOILET PULL.

5.5ins long, **white** glaze with brass ends, **black** transfer 'HOLDMARK/ SANITARY ENGINEERS/ LONDON/ PULL'. Very good. NR £20-30+. (GM)



#### 10. 2 CISTERN DISINFECTORS.

One 4.75ins tall to top of screw stopper, **off white** glaze, **black** transfer 'THE PROPERTY OF CALMIC LTD' the other 4.25ins tall, transferred 'SIMPLY PLACE IN THE CISTERN...' to rear 'ROLYAT/ AUTOMATIC/ DISINFECTOR SIMPLEX'. (2) Good. NR £20-30+. (GM)





**11. SHEFFIELD TOILET PULL.** 5ins long, ceramic toilet pull, **white** glaze with brass ends, **blue** transfer 'J.B. CORRIE & SONS/ SHEFFIELD PULL'. Good. NR £20-30+. (GM)

**12. CREWKERNE CREAM POTS.** 4.25ins tall, one **off white**, one **grey** glaze, **black** transfer 'PURE FRESH CREAM/ PARRETT & AXE VALES DAIRY COY CREWKERNE SOM' plus 'AXE BRAND...'. Which one's the rarity? (2) Good. NR £20-30+.



**13. STILTON JAR.** 5ins tall, to top of lid, **off white** glaze, **black** transfer "STILESTER"/ REGD FINEST QUALITY BLUE STILTON... JOHN BARKER & CO LTD/ KENSINGTON'. Chips to lid. NR £20-30+.



**14. SOUTHPORT CREAM POT.** 4.5ins tall, **dark brown** glaze, **black** transfer 'THOMS TEA HOUSE SOUTHPORT'. Very good. NR £20-30+.



**15. SCARBORO CREAM POTS.** Tallest 3.75ins tall, **off white** glaze **black** transfer 'RICHARDSONS ... THE CREAMERY/ SCARBORO' plus 'RILEYS DAIRIES/ HULL BRIDLINGTON & SCARBORO...'. (2) very good. NR £20-30+.

**16. BROWN & POLSONS BLANC MANGE MOULD.** 3.5ins tall, **white** glaze, **black** transfer 'BROWN & POLSONS/ CORNFLOUR BLANC-MANGE' to one side with 13 lines of directions to the other. Rare small size. Very good. NR £20-30+. (GM)



**17. TOILET PULL DUO.** One 4.25ins tall, **white** glaze with **sepia** floral transfer. Plus one 4ins tall with **streaky brown & cream** glaze. NR (2) £20-30+. (GM)

**18. PAIR OF CREAM POTS.** 5.25 & 3ins tall, **off white** glaze, **black** transfer 'RICHARDSONS THICK CREAM SCARBORO CREAMERY/ SHEFFIELD'. (2) Good. NR £20-30+.



**19. CHEESE DISH AND COVER.** 7ins tall to top of handle, **multicoloured** transferred dairy maid scenes to top & sides, dairymaid milking cow in meadow, farm buildings, dairy interior scenes to sides. Hill Pottery p.m. to base. Very good. NR £30-40+. (GM)



**20. CHEESE DISH AND COVER.** 7ins tall to top of handle, as previous lot, but transferred in **sepia** tones. Very good. NR £30-40+.



### CONDITION - help us to help you!

If you spot condition differences/ faults/ repairs we haven't please advise BBR staff. We always announce such amendments prior to a sale.



- 21. BALLOON YEAST SHOP COUNTER TRAY.**  
12.75 x 10.75ins, **white** glaze, **black** transfer 'PURE BRITISH "BALLOON" YEAST' round outside, '... **IRISH DISTILLERY LTD BELFAST**', & hot air balloon to centre. good. NR £60-80+. (GM)

- 22. PAIR OF CYLINDRICAL CREAM POTS.**  
3.5ins tall, **white** glaze, **blue** print 'DEVONSHIRE/ CLOTTED/ CREAM' plus **off white** glaze **black** print 'FROM GRAYS ... DEVONSHIRE CREAM'. (2) Very good. NR £40-60+.



- 23. HALIFAX CREAM JUG.**  
4.75ins tall, **brown** top lower **off white**, **black** transfer 'WEBSTER & SON... HALIFAX'. Extremely rare large size. Very good. NR £30-40+.



- 24. BUTTERCUP CREAM POT.**  
4.75ins tall, **blue** top, **blue** transfer 'BUTTERCUP/ CREAM' with cow & milkmaid pictured. Very good. NR £20-30+.



- 25. PAIR OF LEEDS CREAM POTS.** 4.25 & 3.25ins tall, **off white** glaze, **black** transfer 'PROVINCIAL DAIRIES LEEDS'. (2) Very good. NR £30-40+.

- 26. BOURNEMOUTH CREAM POT.** 3.25ins tall, **dark blue** top, **black** transfer 'PETTEY'S DAIRIES... WESTBOURNE AND WARMINSTER ROAD' 'Dairy Supply Co London' to base. Some crazing, generally good. NR £20-30+.



- 27. LINCOLN CREAM JUG.** 4ins tall, **brown** top lower **off white** glaze, **black** transfer 'EXCELSIOR DAIRY CO/ PURE RICH CREAM/ NORMANBY BY SPITAL/ LINCOLN'. Very good. NR £20-30+.

- 28. TOLLERTON (YORK) CREAM POT.** 4.25ins tall, **off white** glaze, **black** transfer 'MILLS YORKSHIRE DAIRY... TOLLERTON/ NEAR YORK'. Very good. NR £20-30+.



- 29. RICHMOND CREAM POT.**  
4ins tall, **brown** top **black** transfer 'F & H.E. HORNBY/ MODEL DAIRIES/ RICHMOND/ KEW & ST MARGARETS... MEDALS... 1885 1896 1901...'. Port Dundas p.m. Very good. NR £30-40+.



- 30. EXPRESS DAIRY CO CREAM POT.** 4ins tall, **pale blue** top, **blue** transfer 'EXPRESS DAIRY... FIRST PRIZE... DAIRY SHOW 1888' 'Dairy Supply Co Ltd/ London W.C.' to base. Very good. NR £60-80+.



**POSTAL BIDDERS** ... must satisfy themselves lot/ s meet their condition standards.  
For a more detailed inspection/ personal assessment please tel. BBR to speak with AB.



**31. SHEFFIELD CREAM POT.** 3.75ins tall, **tan** glaze, **black** transfer 'BRIGHTSIDE AND CARBROOK... BROUGHTON LANE SHEFFIELD'. Extremely rare. Very good. NR £20-30+.



**32. BRISLINGTON CREAM POT.** 5.25ins tall, **brown** top, **black** transfer 'RICH THICK CREAM/ C.W.S. LIMTD/ BRISLINGTON/ SOMERSET'. Very rare **large size**. Very good. NR £30-40+.



**33. ILKLEY CREAM POT.** 4ins tall, off **white** glaze, **black** transfer 'RICH FRESH CREAM PROVINCIAL DAIRIES/ LIMITED/ COW & CALF ROCKS ILKLEY/ WARRANTED PURE'. Some staining to glaze. NR £40-60+.



**34. LARGE VIROL JAR.** 8.75ins tall, off **white** glaze **black** transfer 'IDEAL FOOD/ VIROL A PREPARATION OF/ BONE-MARROW... FOR CHILDREN/ & INVALIDS'. Very good. NR £30-40+. Scarce large size (GM)



**35. SMITHS CRISPS SHOP COUNTER DISPLAY JAR.** 10.5ins tall, clear glass with **red** plastic screw off lid (part damaged). 'SMITHS/ POTATO/ CRISPS' in **red & blue** recessed lettering, otherwise good. NR £30-40+. (GM)

Garth Morrison Collection of Sewing Machines & Typewriters - in this and a 2015 BBR Auction.



**36. CAST IRON SEWING MACHINE 'THE LITTLE HOWE'.** 10ins tall, paw foot design, hand stencilled t.m. Hand crank seized. c. 1870's? Scarce. NR £20-30+



**37. CAST IRON SEWING MACHINE.** 10ins tall, cast iron on wooden base, some mother of pearl decoration & hand painted floral design. Handle missing. NR £20-30+



**38. SINGER SEWING MACHINE.** 13ins tall, early cast iron, wooden base, hand stencilled design in **gold**. Hand cranked. NR £30-40+

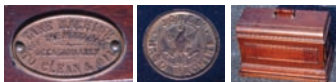


**39. CAST IRON SEWING MACHINE 'DEFIANCE'.** 10.75ins tall, paw foot to base, highly detailed hand stencilled design all over. Hand cranked. NR £20-30+



**40. CAST IRON SEWING MACHINE.** 10ins tall, cast iron sewing machine on paw feet 'PATENT LOCK STITCH HAND MACHINE' to brass plaque at the business end. c. 1893. NR £20-30+





#### 41. JONES HAND SEWING MACHINE.



12ins tall to top of wooden case. Cast iron sewing machine with hand stencilled gold decoration. Hand cranked. Good. NR £20-30+.



#### 45. 'REMINGTON' TYPEWRITER.

12ins tall to top of tin carrying case. Remington Standard No 5 model (?) c. 1894. NR £20-30+

#### 46. 'ROYAL BAR-LOCK' TYPEWRITER.

8.25ins tall, 'ROYAL BAR LOCK NO 14' to front 'HIS MAJESTYS

TYPEWRITER... BAR-LOCK BUILDINGS SOUTHWARK LONDON', n gold lettering to rear. NR £30-40+



#### 42. CORONA TYPEWRITER.

In leatherette carrying case, 10ins square, complete with instructions & accessories. NR £30-40+



#### 43. 'SALTER STANDARD NO.7' TYPEWRITER.

12.5ins tall to top of tin carrying case. 'SALTER STANDARD NO 7' in gold lettering. NR £30-40+



44. 'IMPERIAL' TYPEWRITER. 8ins tall, on wooden base, c. 1915. Curved keyboard type. NR £30-40+



#### 47. 'SCRIPTA NO 7' INDEX/ TYPEWRITER.

4.75ins tall, on wooden base with metal cover. Made in Germany. 'SCRIPTA NO 7' to diamond shape plaque. c. 1924. NR £30-40+.



48. MIGNON AEG TYPEWRITER. 8.5ins tall to top of wooden carrying case. 'MIGNON MODEL 4' produced between 1923 and 1934. NR £30-40+



**Cash registers, post boxes & general household items - more next year.**

**49. 'NATIONAL' CASH REGISTER.** 17ins tall, 18.5 by 16ins at base. Heavy chrome metal cash register ornately embossed all over 'NATIONAL', to drawer & rear 'Stevenson 3186658' makers to label on front. Fully functioning & complete with key. NR £180-220+. (G.M)



**50. 'NATIONAL' CASH REGISTER.** 19ins tall, 18.5 by 15.25ins at base, heavy brass cash register ornately embossed all over 'NATIONAL' to base & rear. NR £250-300+. (G.M)



**51. THE NATIONAL CASH REGISTER.** 7.5ins tall, 17ins wide, 19ins deep, wooden construction with brass fittings, makers plaque to rear 'THE NATIONAL/ CASH REGISTER CO DAYTON O. U.S.A. PAT FEBR 1403'. NR £60-80+. (GM)



**52. VICTORIAN MAIL BOX.** 30ins tall, 10ins wide, 15ins deep, heavy cast iron mail box painted red 'VR' & crown above letter slot. Mailing times under glass below. NR £80-100+. (GM)



**53. POST BOX.** 20.5ins tall, 10ins wide, 14ins deep. Heavy cast iron post box, domed top 'G.R.' with crown above posting slot. Lockable door below with key. NR £80-120+. (GM)



**54. No lot**

**55. STAMP MACHINE.** 24ins tall, 15ins wide, 12ins deep. Heavy cast iron, 2 compartments to front with 'POSTAGE' & 'STAMPS' in raised lettering (no glass fronts). Lockable door to base. NR £60-80+. (GM)



**56. BRASS RAIL.** 6ft 6ins long with 2 fixing brackets & finials to ends. NR £20-30+ (GM)





**57. GOBLIN WIZARD VACUUM CLEANER.** 39ins tall to top of wooden handle, cloth dust bag 'GOBLIN WIZARD SERIAL NO 679733 MODEL 30 BRITISH VACUUM CLEANER & ENGINEERING CO LTD'. *This product is not available from Ikea or any other reputable hardware store!* NR £30-40+. (GM)



### 58. CAST IRON BOOT

**SCRAPER.** 5.75ins tall, 11ins across, oval base impressed 'A Kenrick & Sons/ No 658' **plus diamond reg. Plus 'SALTERS GAS IRON'** 6ins tall, (2) NR £30-40+. (GM)



**59. 'MAGNET' ELECTRIC BED WARMER.** 10ins tall, heavy white glazed bed warmer, **black & red** lettering "MAGNET" ELECTRIC BED WARMER', 14 instruction lines below. Carrying handle to top. Good. NR £30-40+. (GM)



### 60. WILLCOX & GIBBS CAST IRON SEWING MACHINE ON WOODEN BASE.

10ins tall to top of hand cranked handle 'WILLCOX & GIBBS/ SEWING MACHINE CO/ NEW YORK LONDON/ PARIS'. NR £40-60+. (GM)

## CONDITION

### help us to help you!

If you spot condition differences/ faults/ repairs which we've missed please advise BBR staff. We always announce such amendments prior to the sale beginning.

**61. SMALL SEWING MACHINE.** 6.5ins tall to top of hand cranked handle, cast iron construction with hand stencilled decoration in **gold**. NR £40-60+. (GM)



**62. SMALL SEWING MACHINE.** 6.5ins tall, cast iron construction with raised decoration. Unusual handle mechanism. NR £30-40+.

**63. PENCIL SHARPENER.** 5.25ins tall, heavy cast iron construction, handle to side, pull out drawer to front. NR £20-30+. (GM)



**64. SMALL SEWING MACHINE.** 7ins tall, cast iron construction with hand stencilled decoration. NR £30-40+. (GM)

### Metal wares.

**65. CAST IRON MONEY BANK.** 5.75ins tall, cast iron money bank formed as a portly gent sat on chair (Bank Manager?) traces of print colouring 'TAM MANY BANK' in raised lettering to both sides. 'PATD DEC 23 1873' to back of chair. NR £120-180+. (JR)





**66. CAST IRON MONEY BANK.** 7.5ins tall, cast iron money bank in the form of Blackpool Tower. NR £30-40+. (JR)

**67. METAL FIGURE**

**GROUP.** 3.25ins tall on rectangular base 5 by 2.5ins, boy & girl on donkeys with 2 boys & dog to side. Some colouring to figures. NR £30-40+. (JR)



**68. GAS FIRE.** 17.75ins tall, 14ins wide, cast iron with ceramic inserts. Label reads 'RADIATION LTD'. NR £30-40+. (GM)



**69. SALTER POSTAL SCALES.** 10ins tall, cast iron base with **white** enamelled measuring scale 'SALTER/ POSTAL/ PARCEL BALANCE NO25'. Good. NR £20-30+.

**70. SIDDONS FLAT IRON.** 5ins tall to top of wooden handle **plus** flat iron base. **Plus** 'WELLS' torch iron lamp. **Plus** 1/2lb square weight, **plus** 'THE HOME' cast iron pot, 2.75ins tall. (5) £30-40+. (GM)



**71. J. TYLOR & SONS PUMP.** 30.5ins long, brass & iron, side handle, 'J TYLOR & SONS LD./ 2 NEWGATE ST. LONDON E.C.' NR £40-60+. (GM)



**72. CAST IRON GAS FIRE.** 19ins tall, 18ins wide, ornate design, face mask below top 'T. FLETCHER & CO WARRINGTON' in raised lettering below. NR £50-60+. (GM)



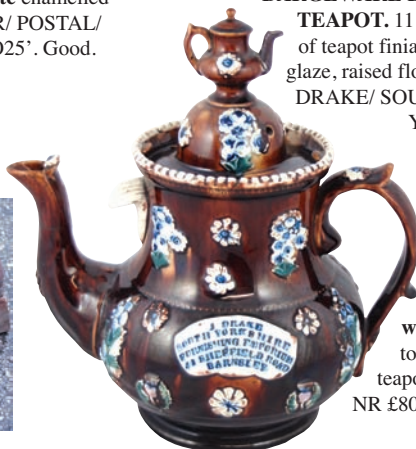
**Bargeware** (also known as Meashamware)



**73. BARNESLEY BARGWARE LARGE**

**TEAPOT.** 11.25ins tall to top of teapot finial, **streaky brown** glaze, raised floral motifs 'J. DRAKE/ SOUTH

YORKSHIRE/ FURNISHING EMPORIUM/ 41 SHEFFIELD ROAD/ BARNESLEY' **blue** impressed lettering on **white** raised area to front. Spout & teapot finial repair. NR £80-120+. (AB)





**74. BARNSELY  
BARGEWARE  
TEAKETTLE ON STAND.**

9.2ins tall to top of overhead handle, **streaky brown** glaze, raised floral motifs 'J. DRAKE & SONS LTD/ HOUSE FURNISHERS/ ... HIGHEST AWARD... GOLD MEDALS AT/ THE TRADES EXHIBITION/ 41 SHEFFIELD RD/ BARNSELY' in **blue** imp'd lettering to **white** area to front. Chips & rim repair, **plus** J. Drake & Sons Ltd framed advert. 9.5 by 7.5ins. (2) NR £80-120+. (AB)



**75. WOODVILLE BARGEWARE TEAPOT.** 9ins tall, **streaky brown** glaze, floral & bird raised motifs all around 'A PRESENT FROM/ WOODVILLE' in **blue** imp'd lettering to **white** area at front. Chip to rim, no lid. A giant! NR £30-40+. (AB)



**76. LEICESTER  
BARGEWARE TEAPOT.**

13ins tall, including stand, **streaky brown** glaze, floral motifs & 'MRS GREATORIC/ LEICESTER/ 1890' in **blue** imp'd lettering on **white** raised area to front. Some rim & lid restoration. NR £80-100+.



**77. ASTON BARGEWARE TEAPOT.** 8ins tall to top of lid, **streaky brown** glaze, raised floral motifs, 'MRS AUSTIN/ SOMERVILLE ASTON/ 1879' in **blue** imp'd lettering on **white** to raised area at front. Some spout lid & rim restoration. NR £60-80+. (JR)



**79. BURTON ON TRENT  
BARGEWARE JUG.** 6.25ins tall, **streaky brown** glaze with raised motifs, birds & florets 'WILLIAM/ CHAMBERS/ BURTON-ON-TRENT' in **blue** imp'd lettering to raised area to front. Good. NR £60-80+.



**Pratt Ware**



**80. PRATT PLAQUE.** 9.75ins by 6.5ins **multicoloured** ceramic plaque, Huntley & Palmers factory premises pictured 'HUNTLEY & PALMERS BISCUIT MANUFACTORY' below. F & J Pratt London imp'd mark to rear. Restored but displays magnificently - a fraction of the price of a mint example @ £4,000-5,000. NR £150-180+.

**81. ARCTIC EXHIBITION  
IN SEARCH OF SIR  
JOHN FRANKLIN  
POT LID (KM17A).**

3ins diam, **multicoloured** lid probably produced by Mayer or Ridgeway. Some restoration to top edge, a rare lid nonetheless. NR £150-200+.



**82. POLAR BEARS  
POT LID (KM  
18A).** 3ins diam, **coloured** lid printed in **blue & green**, the picture seems to be taken from a Baxter print 'POLAR SKY'. Good. NR £80-100+.





**83. BEARS AT SCHOOL POT LID (KM 9).**

3.5ins diam, **multicoloured** pot lid produced at the Pratt Factory. Good. NR £30-40+.



**84. BEARS AT SCHOOL POT LID (KM 9).**

3ins diam, smaller version of previous lot **multicoloured** lid produced at the Pratt Factory. Good. NR £30-40+.



**85. THE INNS POT LID (KM 15A).**

3ins diam, **multicoloured** lid probably produced by the Pratt Factory. Good. NR £100-120+.



**86. PARISH BEADLE POT LID (KM 322A).**

3ins diam, **multicoloured** pot lid produced by the Pratt Factory. Good NR £40-60+.

**87. BEARS ATTACKED BY DOGS POT LID (KM 2A).**

3.5ins diam, **multicoloured** pot lid produced by the Pratt Factory. Couple of bottom flange chips. NR £150-200+.



**88. VILLAGE WAKES POT LID (KM 321A).**

3ins diam, **multicoloured** pot lid, produced by the Pratt Factory. Some bottom flange chips. NR £60-80+.



**89. BEAR PIT POT LID (KM 6A).**

3ins diam, **multicoloured** pot lid, produced by the Pratt Factory. Very good. NR £40-60+.



**90. BEARS ON ROCKS POT LID (KM 10C).**

3.75ins diam, **multicoloured** pot lid, probably produced at the T.J & J Mayer factory. Some minor bottom flange flakes. NR £30-40+.

**CONDITION - help us to help you!**

If you spot condition differences/ faults/ repairs we haven't please advise BBR staff. We always announce such amendments prior to a sale.

**POSTAL BIDDERS ... must satisfy**

**themselves** lot/ s meet their condition standards.

For a more detailed inspection/ personal assessment please tel. BBR to speak with AB.



**91. THE TRYST POT LID (KM 116B).**

2.5ins diam, **multi-coloured** lid & base, 'COLD CREAM OF ROSES/ ... G.T. JERRAM LATE WHITTAKER & CO 69 HATTON GARDEN' produced by the Mayer Factory. Slight staining/ crazing. NR £80-120+.

**92. A PRETTY KETTLE OF FISH POT LID (KM 56).** 4.25ins diam, **multicoloured** pot lid, produced at the Pratt Factory. Good. NR £30-40+.



**93. No lot**



**Other lids.**

**94. DARTMOUTH TOOTHPASTE POT LID.** 2.5ins diam, 'FRAGRANT TOOTHPASTE/ HUMPHRY CHEMIST & DENTIST DARTMOUTH

DEVON'. Dartmouth Castle & mouth of the English Rhine pictured. Possible flange restoration - so conservative estimate? NR £40-60+

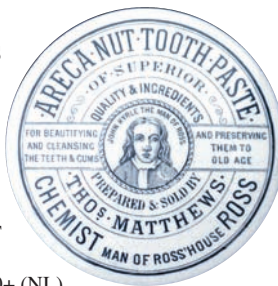
**95. F. NEWBERRY & SONS TOOTHPASTE POT LID.** 3.5ins diam, 'TE OLD ENGLYSSCH

CHERRY TOOTHPASTE 1746/ MAYSTRES F. NEWBERRY & SONS LONDON'. Old London from the Health Exhibition pictured. Impressive large size lid Good. NR £60-80+



**96. THOS MATTHEWS ROSS TOOTHPASTE POT LID & BASE.** 3ins diam, 'ARECA NUT TOOTHPASTE

PREPARED & SOLD BY/ THOS MATTHEWS/ CHEMIST MAN OF ROSS HOUSE ROSS'. Good. NR £30-40+ (NL)

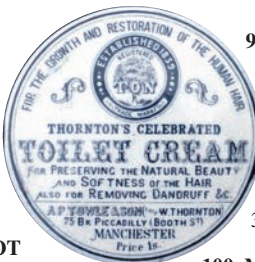


**97. BATH FINIGANS NUTRITIVE CREAM POT LID.** 2.75ins diam,

**pale blue** lid transferred 'BATH/ FINIGANS/ NUTRITIVE CREAM', 7 lines of writing below. Good. NR £20-30+



**98. LEAMINGTON NUTRITIVE CREAM POT LID.** 2.5ins diam, 'GRAYS/ NUTRITIVE CREAM... HAIR CUTTER & PERFUMER/ 27 REGENT ST/ LEAMINGTON'. Chip to bottom flange & couple top edge nibbles. NR £20-30+

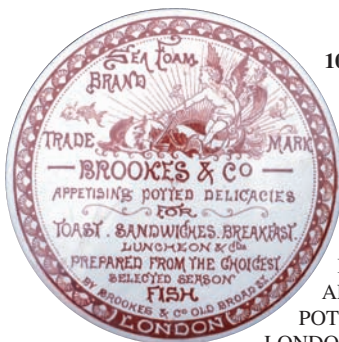


**99. THORNTON'S TOILET CREAM POT LID.** 3ins diam, 'THORNTON'S CELEBRATED/ TOILET CREAM... BOOTH ST/ MANCHESTER/ PRICE 1S'. Bottom flange chip. NR £20-30+



**100. MRS**

**ELLEN HALES OINTMENT POT LID.** 3ins diam, 'CELEBRATED HEAL-ALL OINTMENT/ MRS ELLEN HALES/ BRANDON ST WALLWORTH/ LONDON'. The woman herself pictured. Storg transfer, good. NR £20-30+ (AB)



**101. BROOKES & CO POTTED DELICACIES POT LID & BASE.** 4ins diam, brown transfer 'SEA FOAM BRAND' BROOKES & CO APPETISING

POTTED DELICACIES LONDON' pictorial t.m.

couple of nibbles to bottom flange but a great looking lid. NR £60-80+ (NL)

**102. POTTED ANCHOVIES POT LID & BASE.**

4.25ins diam, 'POTTED ANCHOVIES' fisherman & fish pictured. Hairline etc - great 'looker'! NR £30-40+ (NL)



**Minerals & patents**

**103. HAYNES PATENT CODD BOTTLE.** 9.25ins tall, aqua glass, embossed 'THE/ PROPERTY OF/ MAYO & RUGG LD/ EARLSDON/ CONVENTRY' to front 'HAYNES/ PATENT/ BOTTLE/ RD 27087' to rear. Fabulous! NR £60-80+. (GM)



## POSTAL BIDDERS

Postal bidders must satisfy themselves lot/ s meet their condition standards. For a more detailed inspection/ personal assessment please tel. BBR, give lot numbers, & call back later - to speak with AB.

**104. DURHAM VALLETS PATENT BOTTLE.** 8.75ins tall, olive green glass cylinder embossed 'SOUTH DURHAM/ MINERAL WATER CO/ WEST HARTLEPOOL' one side 'VALLETS PATENT LIVERPOOL/ MAKERS LIVERPOOL &/

BARNESLEY' to other. Very good. NR £200-300+. (GM)



**105. BURY EARLY CODD BOTTLE.**

9ins tall, aqua glass embossed 'MATTHEW POMFRET... ALBION WORKS/ BURY' to front 'CODDS PATENT 4/ RYLANDS & CODD/ ... STAIRFOOT BARNESLEY' to rear. Some scuffs/ cleaned, fairly good. NR £20-30+.



**106. SALFORD AMBER HAMILTON.**

9ins across, delightful light amber glass, embossed 'LEIGH & CO/ SALFORD' with the Globe t.m. Extremely rare large size. Good. NR £80-120+. (GM)



**107. HUDDERSFIELD EARLY CODD**

**BOTTLE.** 8.75ins tall, aqua glass slim neck codd embossed 'TINKLER/ &/ LITTLEWOOD/ HUDDERSFIELD' to front 'CODDS/ PATENT/ 4/ LONDON/ SE' & 'B RYLANDS/ BOTTLE WORKS/ NEAR BARNESLEY' to rear. Well embossed, some scuffing, generally good. NR £20-30+. (GM)





**108. STONEWARE**

**HAMILTON.** 7.75ins long, mid to dark brown varying salt glazed hamilton (unglazed pointy end to stand it upright on silica sand in kiln). Very good. NR £80-120+. (DN)

**109. BOLTON BLUE LIP BEER**

**BOTTLE.** 8ins tall, aqua glass beer with cobalt blue lip embossed 'J. ECKERSLEY/ BOLTON'. Patch of haze (inside back). Overall very good. NR £60-80+. (GM)



**110. KEYSTONE AMBER**

**CODD BOTTLE.** 8.5ins tall, amber glass 10 sided base codd bottle heavily embossed 'THE STEAM BOTTLING COMPANY KEYSTONE' base & lip bruise. Plus aqua glass version, bottom corner nick. (2) NR £120-150+.



**111. HILLS PATENT BOTTLE.** 7.5ins tall, aqua glass embossed 'HILLS/ CHAPMAN/ & CO LTD/ LONDON S.E.' metal wired on cap embossed 'HILLS CHAPMAN CAMBERWELL S.E.'. Lip cracks. NR £20-30+. (GM)

**112. MANCHESTER SNOWDROPS BOTTLES.**

9.25ins tall, aqua glass, fluted base 'SNOWDROP/ J. LYON & CO LTD/ MANCHESTER' to front 'REGISTERED/ LIVERPOOL/ & BIRKENHEAD'. Plus Snowdrop cylinder bottl. 9ins tall, aqua glass wooden stopper. (2) Good. NR £20-30+.



**113. HULME PATENT BOTTLE.**

6.75ins tall, aqua glass cylinder, rubber ball closure, embossed 'R. GOUGH/ CORNBROOK HULME' one side 'T.M. & CANNINGTON SHAW MAKERS ST HELENS' to other. Good. NR £20-30+.



Whisky jugs

**114. WATSON'S WHISKY JUG.**

8.75ins tall, brown top, rear handle, black transfer 'WATSON'S DUNDEE/ WHISKY' kilted highlander about to hurl large rock. '... CONTENTS 1/4 GALLON' below. Port Dundas p.m. Glaze wear to pouring lip. Fine example. NR £40-60+. (GM)



**115. SPECIAL HIGHLAND WHISKY JUG.**

7ins tall, all tan salt glaze with raised sailing ship in green glaze 'SPECIAL/ HIGHLAND WHISKY' in white raised lettering. Doulton Lambeth imp'd base mark. Very good. NR £40-60+. (GM)



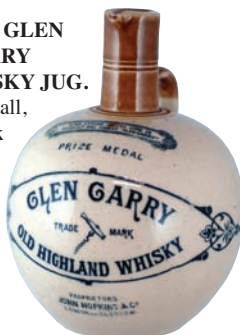
**116. JEROBOAM WHISKY JUG.**

7.75ins tall, **tan** neck, rear handle, **black** transfer 'JEROBOAM/ THE ROYAL BLEND WHISKY' with stag pict. t.m. & 'A.C. THOMSON & CO GLASGOW' to rear. H. Kennedy Glasgow p.m. very good. NR £20-30+. (GM)

**117. GLEN GARRY WHISKY JUG.**

7.75ins tall,

**tan** neck, rear handle, **black** transfer 'PRIZE MEDAL/ GLEN GARRY/ OLD HIGHLAND WHISKY' corkscrew pict. t.m. Port Dundas Glasgow p.m. Very good. NR £40-60+. (GM)

**118. AULD LANG SYNE WHISKY JUG.**

8ins tall, **tan** neck, rear handle, **black** transfer - 3 men at table drinking, verse above, 'AULD LANG SYNE' to rear. H. Kennedy Glasgow p.m. Exceptional finely detailed transfer example. Very good. NR £40-60+.

**119.**

**JOHNNIE WALKER RUBBEROID BACK BAR FIGURE.**

Johnnie Walker on wooden base '... WORLDS LARGEST SELLING SCOTCH'. **Plus** 'BULMERS CIDER' plastic woodpecker figure, **plus** 'WADE COLLECTABLES' ceramic stand '...1998'. Tallest 10ins. (3) good. NR £20-30+.

**120. WM YOUNGER RUBBEROID FIGURE.**

William Younger figure stick in hand (beer mug absent) stood on square plinth 'WM YOUNGERS/ TARTAN KEG/ GET YOUNGER EVERY DAY'. **Plus** 'WHITE HORSE/ SCOTCH WHISKY' ceramic figure (matt). **Plus** '... BELL'S SCOTCH WHISKY' pub jug. Wade p.m. Tallest 9ins. (3) NR £20-30+.



**121. PAIR OF CHANDY PLASTIC LION FIGURES.** lge & sml, **yellow & orange**. **Plus** ceramic ashtray, 'MONTECRISTO HABANA' oval ceramic wall mounting cigars display stand. (4) Good. NR £20-30+.

**122. CAMWALL PUB JUG.**

4ins tall, **green** glaze top, lower **off white**, **black** transfer 'TRY CAMWALL/ GRAPE FRUIT TONIC/ DRY GINGER ALE ETC' to both sides. Very good. NR £20-30+.

**Kingsware****123. MINIATURE KINGSWARE VASE?**

2.5ins tall, **red/ brown** glaze with figure (bust) in relief of bewigged gent wearing **green** jacket. Unrecorded Kingsware piece. Couple minor top rim chips. NR £20-30+.

**EMAILS BIDS**

Email bids to: [sales@onlinebbr.com](mailto:sales@onlinebbr.com)  
add full name, address & credit card details,  
or fax: 01226361561. **YOU MUST ALSO**  
**POST BID SHEET - EVEN IF TO**  
**ARRIVE AFTER THE SALE**

**SALE DAY FLOOR BIDDERS**

All lots sold **AS SEEN**. Bidders must ensure items meet personal condition standards.

**124. THE CONNOISSEUR**

(JL pg 22) 8.75ins tall, ovoid flask, relief figure title in piped lettering 'THE CONNOISSEUR'. Royal Doulton circle base mark lion & crown. Scarce item. Very good. NR £80-120+. (JR)

**125. GEORGE THE GUARD** (JL pg 26) tallest 10.75 ins. Cylindrical flask. relief character to front, below 'GEORGE/ THE/ GUARD', 'DEWAR/ WHISKY' to rear - piped lettering. Lip rest 'n. **Plus**

**NIGHTWATCHMAN** (JL pg 39), cylindrical flask, relief character 'DEWAR/ SCOTCH' in raised lettering, 'DEWAR/ SCOTCH' to rear. Lip & handle rest 'n. **Plus** Falstaff flattened circular flask. Damaged. R.D. base marks. (3) NR £30-40+

**126. ROYAL WORCESTER FOX CUBS FIGURE GROUP.**

2.5ins tall, brown & white colouring. Royal Worcester p.m. to base. Very good. NR £20-30+. (JR)



**127. STAFFORDSHIRE SPILL VASE.** 8.25ins tall, coloured figure group, 2 girls seated and boy standing formed as a spill vase. Late 19th century. Good. NR £30-40+. (JR)



**128. LEEDS PRESERVE JAR.** 6ins tall, jug with screw on ceramic lid, white glaze with black detailed transfer showing 'S. SMITHS FRUIT PRESERVING WORKS BRAMLEY LEEDS' both sides. Good. NR £60-80+. (GM)



129.

**MARLBOROUGH BEEKEEPER TWIN HANDLED LOVING CUP.**

3.5ins tall, white glaze, black pict transfer 'GOD SPEED THE PLOUGH' to front, base verse. 'A.W. Gale Bee farmer Malborough' to base. Good. NR £30-40+. (GM)



**130. BELLARMINE JUG.** 8.25ins tall, typical bulbous bodied Bellarmine jug. Brown tiger salt glaze, rear handle, large bearded face below, wide neck, belly cartouche with coat of arms to front. Good. NR £250-300+.



**131. FIGURAL TOBACCO JARS (?) - LARGE PAIR.** 12.75ins tall, varying brown salt glaze, figures of portly gent, head & shoulders lifts off to form lid (1 restored). Impressive pair of heavy sculptured pieces. (2) NR £60-80+.

**AFTER SALE PRICES REALISED**

BBR sale results on website: [sales@onlinebbr.com](mailto:sales@onlinebbr.com)  
or on Facebook: **BBR Auctions**  
or email BBR for a pdf: [sales@onlinebbr.com](mailto:sales@onlinebbr.com)



**133. LARGE BACCHUS JUG.** 9.5ins tall, **brown & tan** salt glaze jug formed as a Bacchus head adorned with hops & leaves. Very good. NR £60-80+.



**134. WELSH ART POTTERY GROUP.**

Tallest 9ins, **green & brown** glazed jug, rampant lion decoration. **Plus green** glazed jug - front monogram, **brown & blue**. **Plus yellow & green** jug incised 'DWFY PUR RHODA RAD DUW'. **Plus green, brown & dark green** vase. One base inscribed 'E Wenny Pottery'. (4) NR £30-40+. (AB)



**Miscellaneous**



**135. SWAITHE MAIN DISASTER PLATE.** 8.5ins diam, **white** glaze **black** transfer '... THE SWAITHE MAIN COLLIERY EXPLOSION DECEMBER 6TH 1875' names of victims round outside 'J. MITCHELL/ COAL OWNER/ DIED JAY 24 1876' to centre. Made by J. Wardle & Co Middlesbro, Stoke on Trent to base. Hairline & glaze chips underside. NR £40-60+.

**SALE DAY FLOOR BIDDERS**

All items sold **AS SEEN** - bidders must ensure lot/s meet their needs.

**136. SWAITHE MAIN DISASTER PLATE.**

8.5ins diam, **white** glaze, **black** transfer as previous with victims names around outside. 'J. NORMANSELL/ SECRETARY/ DIED DEC 24 1875' to centre. No p.m. Hairline & reglued rim piece. NR £40-60+.

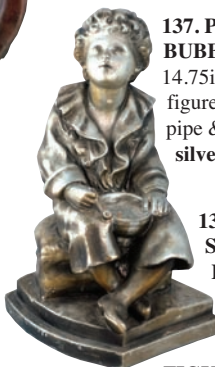


**137. PEARS SOAP BUBBLES FIGURE.**

14.75ins tall, chalk figure of boy with pipe & bowl. Painted **silver**. NR £30-40+.



**138. PEARS SOAP BUBBLES**



**FIGURE.** 6ins tall, coloured bisque figure of boy sat on log blowing bubbles (pipe missing). NR £20-30+.

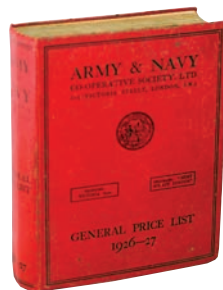


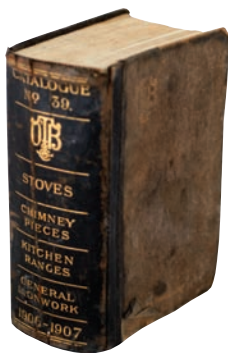
**139. PEARS ENCYCLOPAEDIA.** 22 complete reference works in 1 handy volume, almost 1,000 pages, 48th edition. **Plus** 'MRS BEETON'S HOUSEHOLD MANAGEMENT COMPLETE COOKERY BOOK' 32 colour plates



nearly 700 illustrations, 1923 edition. (2) NR £20-30+.

**140. ARMY & NAVY CO-OP SOCIETY TRADE CATALOGUE.** General price list 1926-27' 1,175 pages lots & lots & lots of illustrations. NR £20-30+. (GM)





**141. TRADE CATALOGUE GENERAL IRON WORK 1906-1907.** 'CATALOGUE/ NO 39/ STOVES/ CHIMNEY PIECES KITCHEN RANGES/ GENERAL IRON WORK 1906-1907'. 1,463 pages, profusely illustrated. NR £20-30+. (GM)

**142. POSTCARD ALBUM.** Containing various postcards, topographical etc. NR £20-30+



**143. PAIR OF WOODEN CHILDS CHAIRS.** 22ins tall, 2 small wooden school chairs. Some overall wear. (2) NR £20-30+.

**144. 3 WOODEN STOOLS.** 2 with square seats 18ins tall. **Plus** a higher stool with round seat 27ins. Some overall wear. (3) NR £20-30+.



**145. CHESTNUT ROASTER.** 22ins tall, metal construction, rotating barrel with handle above. NR £20-30+.

**146. CAST IRON PUB TABLE.** 29ins tall, round top with glass insert, cast iron tripod base. NR £30-40+.



**147. WROUGHT IRON STAND.** 51ins tall, twisted stem on tripod base. Suitable outside garden candle? NR £20-30+.



**148. PAIR OF UNUSUAL MEAT ROASTING SPITS.** 30 & 24ins tall, iron construction. (2) NR £20-30+



**149. VICTORIAN CHILDS IRON BAILE & HOOP.** 22ins diam, heavy old cast iron Victorian childs toy. Some rusting. NR £20-30+

**150. MAGIC LANTERN.** 10ins tall, 18.5ins long, wood & metal brass construction with wooden box. Some rusting - needs a little tlc. NR £20-30+



**151. GROUP OF BOXED VW CARS & VANS.** 2 cars one convertible plus 2 campervans. German manufacturer. (4) NR £20-30+.



**152. MODEL OF A FIELD HOWITZER.** 4.25ins tall, 14ins long, heavy metal painted green

levers to elevate barrel & turn the gun. Astra made in England. Good. NR £20-30+.



**TERMS & CONDITIONS** are printed to catalogue rear. All bids accepted on the understanding these have been read & accepted

**154. PENDELFIN**

**GROUP.** Tallest 13.25ins. Inc. 'THE NURSERY' large stand. **Plus** 'TOY SHOP', **plus** figures Charlotte, Sandie, Scrumpy, Boswell, Rocky, Teddy, Snuggles Awake & Poppet. Hand painted stoneware by Pendelfin. Base labels, figures inc boxes. Few nibbles (10) NR £30-40+.



**155. DOULTON TEASET.** Tallest 5ins. Comprising tea pot, tea pot stand, sugar bowl, milk jug, **brown & tan** salt glaze with raised hunting motifs & windmill, toppers etc. all around. Royal

Doulton imp'd marks. (4) Good. NR £40-60+.

**156. DOULTON SALAD BOWL.** 8.5 ins diam, **white** metal rim, **brown & tan** salt glaze with raised motifs, toppers, tree & windmill, complete with pair of servers - **white** metal with salt glaze handles. Doulton Lambeth England imp'd mark. Very good. (3) NR £30-40+.

**157. PAIR DOULTON TOBACCO JARS.**

Tallest 5.75ins tall to top of lid. One **tan** salt glaze with **brown** raised rings, monkey smoking pipe to rear 'TOBACCO' in raised lettering. **Plus**

**green** top, main body textured **tan** salt glaze. Doulton imp'd marks. (2) Good. NR £30-40+.

**158. PAIR DOULTON TOBACCO JARS.**

Tallest 5.5ins tall to top of lid. One with **gold** siliconware design. To base artists initials EC & EW. **Plus blue** top example, main body textured **tan** salt glaze. Royal Doulton imp'd mark. (2) Good. NR £30-40

**159. DOULTON MIXED**

**GROUP.** Tallest 5.25ins. 'YE OLDE CHESHIRE CHEESE/ 1667' pepper pot, **brown & tan** salt glaze. **Plus** 'YE OLDE CHESHIRE CHEESE/ 1667' mustard pot, **brown & tan** salt glaze, **blue** interior. **Plus** conical jug,

raised hunting motifs, drinkers, smokers, etc. **Plus** globe shape matchstriker, raised motifs in **white**. Doulton imp'd marks. (4) Good. NR £40-60+.

**Ginger beers****160. DUNDEE GINGER BEER**

**BOTTLE.** 8ins tall, ch. t.t. **black** transfer 'D & W. EDWARDS... BROUGHTY-FERRY & DUNDEE'. Buchan p.m. Very good. NR £40-60+. (IM)

**161. ATHERTON GINGER**

**BEER BOTTLE.** 8ins tall. Ch. t.t., 'BREWED/ GINGER BEER/ R. STOTHERT & SONS/ ATHERTON' bearded man pict. t.m. Meadowcroft patent. Small lip & base chip. Very crisp transfer. Buchan p.m. NR £30-40+. (GM)





**162. NEWCASTLE GINGER BEER BOTTLE.** 8ins tall, ch. **blue** transfer 'GILPIN & CO... NEWCASTLE ON TYNE'. Small base flake. Buchan p.m. NR £20-30+. (KB)

**163. BRADFORD GINGER BEER BOTTLE.** 6.75ins tall, st. All **white** '... MILNES & SON/ UNDERCLIFFE/ BRADFORD'. Lovatt p.m. Good. NR £20-30+.



**164. EBCHESTER GINGER BEER**

**BOTTLE.** 8ins tall, ch. t.t. 'T. ARMSTRONG & SON... BLACK HALL MILL/ EBCHESTER'. Steam engine pictorial to centre. Price Bristol p.m. Good. NR £30-40+. (KB)



**165. BUCKIE GINGER BEER BOTTLE.** 9ins tall to top of swing stopper, ch. **Blue** lip, strong **blue** transfer 'W & J CRUICKSHANK... BUCKIE'. Front touch mark. NR £30-40+. (IM)



**166. DORCHESTER GINGER BEER BOTTLE.** 7ins tall, st. t.t. 'F. W. EDWARDS/ THE CYCLISTS/ FAVOURITE/ GINGER BEER/ DORCHETSER'. Cyclists pictorial trade mark. Price p.m. Very good. NR £30-40+.



**167. SHEFFIELD GINGER BEER BOTTLES.** 7.5ins tall, 2 variations '... S.H. WARD & CO LTD/ RENTON STREET SHEFFIELD'. One Port Dundas p.m. other Lovatt (2) Good. NR £20-30+. (AB)



**168. GATESHEAD & SUNDERLAND STOUT BOTTLE.** 8ins tall ch. t.t. 'JOSEPH WILKINSON... GATESHEAD & SUNDERLAND'. Small base chip. Buchan p.m. NR £20-30+.



**169. WOOD SONS & CO GINGER BEER BOTTLE.** 8ins tall, ch. t.t. 'WOOD SONS & CO... BEDLINGTON NEWCASTLE/ AND/ CONSETT'. Buchan p.m. As dug - overall good. NR £20-30+. (KB)



**170. DARLINGTON GINGER BEER BOTTLE.** 7.25ins tall, st. t.t., **blue** transfer 'FIRTHS DARLINGTON ...' locomotive pictured. Classic! Gray p.m. Good. NR £20-30+. (GM)



**171. KIRKCALDY STOUT BOTTLE.** 8.5ins tall, ch. All white, **blue** imp'd lettering. 'R.H. Mc CONNOCHIE... KIRKCALDY' Small base nibble. Buchan Portobello p.m. NR £20-30+. (IM)



## EITHER OR BIDS

Absentee bidders on a tight budget BBR operates an 'either' 'or' option. Bid '£X' on 1 item, '£Y' on another if unsuccessful. We can carry amounts over too. **BUT** - make instructions simple and clear! If in doubt email AB.



**172. GREEN TOP GINGER BEER BOTTLE.** 7ins tall, st. green top, black transfer '... GILBERT RAE LTD/ DUNFERMLINE'. Buchan p.m. Good. NR £20-30+. (IM)

**173. LINTZ GREEN STOUT BOTTLE.**

8ins tall, ch. t.t. 'BOB ARMSTRONG... DIPTON/ LINTZ GREEN'. Entwined initials to centre. Good. NR £20-30+. (KB)



Mixed miscellany



**174. MUSIC HALL MUSIC SHEETS.** Some

with multicoloured pictures. Plus album of signed photographs - same interest. NR £20-30+.

**175. WALL CLOCK.**

Wooden wall clock circular shape 16ins diam, 'SMITHS/ ENFIELD' to dial. NR £30-40+.



**176. QUEEN VICTORIA FLASKS.**

Tallest 9.25ins, c. 1860's. Shiny brown glaze, Queen Victoria half modelled bust taller impressed 'QUEEN/

VICTORIA 1st' plus example with applied scrolls 'VR' imp'd below. Very good. NR £20-30+. (DD)



**follow BBR Auctions on Facebook**

Auction results, News & Updates regularly added to FB - befriend us!

**177. BELLOWS FLASK.** 6.75ins long, white opaque glass with pink swirls, and clear glass rigaree ribbons to sides - minor damage. NR £30-40+.



**178. TRADESMANS SAMPLE TOILET & SINK.** Tallest 4.75ins. Pedestal sink transferred 'JOHNSON BROS HANLEY LTD STOKE ON TRENT' plus toilet 'FRIGIDAS' & also transferred 'Johnson Bros' etc. (2) Good. NR £20-30+.



**179. LARGE GLASS JAR.**

14ins tall to top of domed lid, clear glass - sweet jar or medical? Good. NR £20-30+.



**180. TREEN APPLE SHAPE CONTAINERS.**

Tallest 4ins tall, (one cracked) plus wooden 'EDUCATION BOARD' punishment



paddle, plus wooden 'PATONS TURKEY RUGWOOL GAUGE', plus wooden barrel 'FROM THE DECKING OF THE MAURETANIA THE OLD LADY OF THE ATLANTIC'. (5) NR £20-30+.

**181. 4 SCHWEPES ASHTRAYS.** 4.5ins diam, Schwepes blue & white willow pattern. Plus tin Parsley Brand



Salmon ashtray. (5) NR £20-30+.

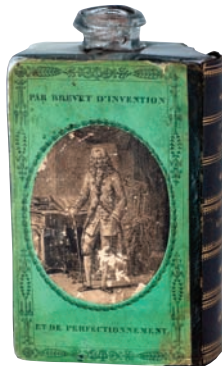
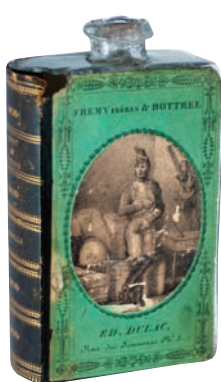


*Left:* this side particularly rainbow iridescence coloured.



**182. DAFFY'S ELIXIR BOTTLE.**

3.75ins tall, deep aqua glass rectangular shape, cross hinged, bevelled corners. Embossed 'TRUE/ DAFFY'S/ ELIXIR' to front 'DICEY/ & CO/ NO 10 BOW/ CHURCH YARD/ LONDON'. A particularly early Daffy variant, pontil base. Some delightful iridescence & overall characterful patination. NR £700-800+.



**183. EARLY GLASS BOOK FLASK.**

7.75ins tall, body 4.5i by 2ins deep. Clear flint glass, very crude, gloppy, rolled lip, pontil scar base, original paper label all round 'FREM Y FRERES & BOTTREL/ ED DULAC/ RUE DES SEUNEURS NO 8' - soldier picture one side 'PAR BREVET D'INVENTION/ ET DE PERFECTION NEMENT' &

18th c. style gent to the other with 'ESPRIT/ DE/ VOLTAIRE/ LA PUCELLE' down spine. One corner damaged, but still a significant discovery. NR £150-200+.



**SALE DAY FLOOR BIDDERS**

- all items sold **AS SEEN**. Bidders must ensure lot/s meet personal condition standards.

**184. CALVES FOOT JELLY BOTTLE.** 8ins tall, clear glass shapely bottle fluted pear shape, flared lip embossed vertically 'CALVES FOOT/ JELLY/ MATTHEWS/ AND/ BLIGHT LONDON'. Very good. NR £30-40+.



**185. CUSTARD GLASSES.**

3ins tall, set of (8) custard glasses with handles to side on pedestal feet. Acid etched 'MONK & GLASS GOLD/ MEDAL/ CUSTARD/ POWDER'. (8) Very good. NR £30-40+.



**186. THORNES WHISKY PUB JUG.**

6ins tall, stoneware jug in blue & grey glaze 'THORNE'S/ WHISKY' in raised lettering to front. Very good. NR £30-40+.



**187. RAILWAYMENS CONVALESCENT HOME JUG.**

7ins tall, brown top & base middle section tan salt glaze, transferred 'THE RAILWAY MENS CONVALESCENT HOME/ HERNE BAY/ KENT' to side picture of premises to front. Royal Doulton imp'd p.m. Tiny rim flake. NR £30-40+.



**188. THE A.B.C. OF ENGLISH SALT-GLAZE STONE-WARE FROM DWIGHT TO DOULTON**

**BOOK.** By J.F. Blacker 243 pages with some illustrations. NR £20-30+.





**190. BAINES SPORTS CARDS.** 4 shield shape cards 'WOSTERDOPOLIS' 'LEEDS SCHOOLS' 'CRICKET LORD HAWKE' & 'BOWL THEN BAT'. (4) NR £60-80+.



**190A. BAINES SPORTS CARDS.** One shield (3) circular 'LANC SCHOOLS/ E HARGREAVES' 'CAMBERLEY HEATH' 'WELL CENTRED WYKE' 'WELL DRIBBLED GREAT HORTON WES'. (4) NR £60-80+.



**191. BAINES SPORTS CARDS.** 4 shield shape cards 'PLAY UP/ BONNIE/ SCOTLAND' 'LUCY SAGAR/ SWIMMING' 'J.W.K.H.B/ HOCKEY' & E.S.B./ SCHOOL GIRLS'. (4) NR £40-60+.



**192. BAINES SPORTS CARDS.** 4 shield shape cards 'W.E.S.B/ NATIONAL' 'R.B. KANGAROO' 'THE ROSE' & 'ENGLISH KNUITS'. (4) NR £40-60+.

**193. PICTORIAL TILES.** 6ins square, sepia transfers 3 depicting children playing etc. the other with man & woman (lovers?). (4) Good. NR £20-30+.



**194. 3 COMICAL ASHTRAYS.**

5.5ins tall. Monocled gents, elongated heads, gaping mouths - cigarette in mouth - smoke



comes out of ears! 'FOR HES A JOLLY/ GOOD FELLOW' to base. The other 'SWEET ADELINE' to base. (3) Good. NR £20-30+.



**195. COAL MINING GLASS SLIDES.**

Wooden box containing 49 glass slides showing mining lamps & equipment from Ackroyd & Best, Morley, Leeds. (49?) NR £60-80+.



**196. GROUP OF CLAY PIPE HEADS.** Sailor, arab, Ally Sloper, soldier, ladies heads etc. (11) NR £20-30+.



**197. BOXED SET OF WEIGHTS.** 5 by 3.5ins plus cased instrument 'GOODMANS/ PATENT PLAMIMETER' for measuring areas. 'REYNOLDS & BRANSON LTD LEEDS'. (2) NR £20-30+.



# 198. GROUP OF POT LIDS.

'Yarmouth BLOATER Paste' (rep'd) **plus** 'Harrogate Cold Cream', 'Woods Toothpaste', 'Boots cold Cream', 'Jewsbury

& Brown Toothpaste', 'Atkinsons cold Cream', 'Rimmington & Son Bradford' pot lid & base, Maws baby feeder top. (11) NR £30-40+.

# 199. ENAMEL POST BOX COLLECTION PLATES.

Largest 8.25 by 5.5ins. **Plus** Shire album 'Old Letter Boxes' by Martin Robinson. (8) NR £20-30+. (GM)



# 200. LEATHER FIRE BUCKET.

11ins tall, 10ins diam with carrying strap, leather bucket with copper rim & copper stud work. NR £30-40+.



# 201. APPLE CORER.

Cast metal apple corer 12ins long, **plus** chrome metal sugar snips. (2) NR £20-30+.



# 202. BATLEY SUNDAY SCHOOL MUG.

3.5ins tall, **white** glaze, **black** transfer 'WESLEYAN SUNDAY SCHOOL/ CROSS BANK/ BATLEY', boy & girl shown on side, Church in background. **Plus** mug, **white** glaze, **black** transfer 'ROBERT TOWN/ WESLEYAN/ SUNDAY SCHOOL'. Base chip. (2) NR £20-30+.



# 203. ROYAL FORESTER JUG.

4.75ins tall, **white** glaze, **black** transfer pictorial scene showing man with bow & arrow in rural setting, quiver of arrows & bugle each side 'ROYAL FORESTER' below rim. Slight staining. **Plus** mug, **white** glaze transferred 'ROBERT TOWN/ WESLEYAN/ SUNDAY SCHOOL/ 1872'. Base & rim chip. (2) NR £20-30+.



# 204. BEEHIVE CHILDS PLATE.

6ins diam, c.1860's (?) hand coloured transfer mother & children by beehive 'HOW DOTH THE... BUSY BEE/ IMPROVE EACH SHINING HOUR... GATHER HONEY... FROM EVERY OPENING FLOWER' embossed outer floral border. Good. NR £20-30+.



# 205. CHILD'S PLATE DUO.

Largest 6ins diam, embossed floral border 'WE SHOULD/ ALWAYS PREPARE/ FOR THE WORST... HOPE/ FOR THE BEST' to centre (hairline). **Plus** octagonal, swagged border, coloured landscape scene, two figures. (2) NR £20-30+.



# 206. PAIR OF CHILDS PLATES.

Largest 8ins diam, embossed floral border & **purple** pict. transfer showing mother & 2 children. **Plus** one with **sepia** pict. transfer showing horsemen. Both hairlined. (2) NR £20-30+.



# 207. WHITSTABLE OYSTER PLATE.

7.75ins diam, **black** pict. transfer - oysters adorn border, hands above barrel t.m. to centre 'WHITE & CO/ OYSTER SALEMEN... FROM THE FISHERIES ADJOINING WHITSTABLE'. Edge chips. Copeland Spode p.m. NR £20-30+.

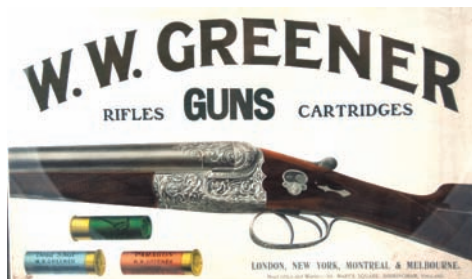




**208. IDLE COMMEMORATIVE PLATE.** 7.5ins diam, **green** pict. transfer - portraits of 'MARY QUEEN & EMPRESS' & 'GEORGE V KING & EMPEROR' 'CORONATION JUNE 22ND 1911...' with

'CORONATION OX ROASTED AT IDLE/ JUNE 22ND 1911' to centre. good. NR £20-30+.

**209. GROUP OF PLATES.** Largest 10.25ins diam, glass plate 'GIVE US THIS DAY OUR DAILY BREAD' raised dot lettering. **Plus** floral border, **black** transfer of dog, bag in mouth, **plus** a child's octagonal, raised floral border, **black** transfer 'JOSEPH' & 2 figures (reglued). **Plus** small **blue** willow pattern plates, one with verse 'FOR AGE & WANT...' **Plus 2 sepia** transferred. (8) NR £30-40+.



**210. GUN CARTRIDGES ADVERT.** 19 x 12.75ins, multicoloured. 'W.W. GREENER/ RIFLES/ GUNS/ CARTRIDGES/ LONDON, NEW YORK MONTREAL & MELBOURNE... BIRMINGHAM, ENGLAND.' Very good. NR £60-80+.

**211. GROUP OF INVALID FEEDERS.** Inc. half covered spout types (2) with **coloured** floral



decoration **plus** duck shape example. One marked 'CERTOR' etc. (12) Good. NR £20-30+.

**212. TRANSFERRED POTS & JARS GROUP.**

'WOTHERSPOONS MARMALADE' **plus** 'BOOTS CONFECTION OF SENNA' **plus** 'TAYLORS DRUG SUPPLY CONFECTION OF SENNA' **plus** (8) potted meat dishes Bradford, Southport Chichester etc. (11) NR £20-30+.



**Salt glaze & early stoneware.**



**213. SALT GLAZE HUNTING JUG.**

7.25ins tall, **brown** top, **tan** salt glaze lower section, raised hunting motifs, riders on horseback & hounds & trees. Pouring lip restored. NR £30-40+.

**214. SALT GLAZE JUG.**

7.25ins tall, **brown & tan** salt glaze, with raised drinking party to front, smoking & drinking toppers either side, hunting scene below. Thin rim hairline & inside flake. NR £30-40+.



**215. SALT GLAZE LOVING CUP.**

5.5ins tall, **brown & tan** salt glaze twin handled with raised motifs, drinkers, windmill, tree & hunting scene. Good. NR £60-80+.



**216. SALT GLAZE JUG.** 5.5ins tall, **brown & tan** salt glaze with raised motifs, smokers, drinkers, windmill & hunting scene all around. J. Stiff & Sons London imp'd mark. good. NR £40-60+ (DD)

**217. DARWEN STONEWARE JUG.** 4.5ins tall, **brown** top lower **off white** glaze, raised shield raised lettering 'CROOKS NOTED XXXX... DARWEN', raised registered t.m. other side. Chip & rim hairline. NR £30-40+ (NL)





**218. SALT GLAZE LOVING CUP/ MUG.** 5.5ins tall, brown & tan salt glaze twin handled - well modelled raised hunting motifs: windmill, drinkers & tree all around. Very good. NR £60-80+. (DD)



**219. LARGE SALT GLAZE TANKARD.**

5.75ins tall, brown & tan salt glaze, greyhound handle, raised hunting scene (The Kill) all round, interesting wheeled decoration below rim. Good. NR £60-80+.

### Midhopstones Style Country Pottery

Earthenware bodied country utilitarian with featuring a shiny black, runny, treacle style glaze - made in a variety of locations, Midhope (Stocksbridge) locally is one such.

This unique collection was put together by the late Dennis Northmore.



### 220. BELLARMINE JUG.

8.5ins tall, typical bulbous bodied Bellarmine, varying tiger glaze, bearded face on neck, belly cartouche below. Some restoration. Plus (2) early French pottery handled vessels one crudely hand painted - matt black. (3) NR. £80-100+.



**221. PUZZLE JUG.** 8.75ins tall, dark red/ brown glazed, red earthenware puzzle jug 3 spouts to rim. Some damage to pierce work below rim but an exceptionally rare form in this pottery type. NR £40-60+. (DN)

### 224. WIDE NECKED JUG.

8.5ins tall, dark red/ brown glazed red earthenware, rear handle. Rim glaze wear. NR £40-60+. (DN)



**222. SMALL HANDLED FLASK/ BOTTLE.** 5.25ins tall, dark red/ brown glazed red earthenware flattened bulbous body, rear handle, unusual circular foot. Very good. NR £50-60+. (DN)



**225. LARGE WATER (?) CONTAINER.** 19ins tall, dark red/ brown glazed red earthenware. Twin handles to top, bung hole near base (chipped). Extraordinarily large example of this pottery type. NR £40-60+. (DN)



**223. POSSET? POT.** 4.5ins tall, dark red/ brown glazed red earthenware handled posset (?) pot. Rim & base chips. NR £30-40+.

**226. INKWELL.** 1.75ins tall, 2.5ins diam, dark red/ brown glazed red earthenware, 3 quill holes round central well. Base chip. NR £30-40+. (DN)





**227. SMALL CUP/ MUG.** 2.25ins tall **dark red/ brown** glazed **red** earthenware handled cup/ mug. Another very rare form of this type. Very good. NR £20-30+. (DN)

**228. MUG.** 4.25ins tall, 4.75ins diam, **dark red/ brown** glazed **red** earthenware, handled mug tapered form. Very good. NR £30-40+. (DN)



**230. FLAGON.** 9ins tall, **dark red/ brown** glazed **red** earthenware flagon, rear handle. Good. NR £30-40+. (DN)



**232. INKWELL.** 3ins tall, **dark red/ brown** glazed, **red** earthenware inkwell 4 quill holes around central well, very crude. Glaze chip to well. NR £30-40+. (DN)



**229. JAR.** 7.5ins tall, **dark red/ brown** glazed **red** earthenware jar. Rim hairlines. NR £20-30+. (DN)



**231. SMALL JAR.** 5.5ins tall, **dark red/ brown** glazed **red** earthenware jar. Base chip. NR £20-30+. (DN)



**233. SMALL COTTAGE.** 2.75ins tall, 2.5ins long, **dark red/ brown** glazed model of a house/ cottage. Some glaze flakes. NR £20-30+. (DN)



**234. POSSET (?) POT.** 3.5ins tall, **dark red/ brown** glazed **red**, side handle. Rim glaze wear. NR £30-40+. (DN)

**235. JUG.** 7ins tall, **dark red/ brown** glazed **red** earthenware bulbous bodied jug. Rear handle. Good. NR £30-40+. (DN)



**236. LARGE BREAD CROCK.** 14 by 13ins diam, **dark red/ brown** glazed **red** earthenware, twin handled, wooden lid. Good. NR £40-60+. (DN)



**237. SMALL HANDLED BOTTLE/ FLASK.** 5.5ins tall, **dark red/ brown** glazed **red** earthenware, bulbous body, rear handle, circular foot. Good. NR £50-60+. (DN)



**238. COLANDER/ STRAINER.** 4ins tall, 10ins diam, **dark red/ brown** glazed **red** earthenware, pierced holes to base. Rim chip. NR £30-40+. (DN)

### CONDITION - help us to help you!

If you spot condition differences/ faults/ repairs we have not please advise BBR. We always announce such amendments prior to the sale.



**239. JUG.** 6.5ins tall, **dark red/ brown glazed red** earthenware, bulbous bodied, rear handle. Good. NR £30-40+. (DN)

**240. FLAGON.** 10.5ins tall, **dark red/**

**brown glazed red** earthenware, straight bodied flagon sloping shoulders, rear handle. Good. NR £30-40+. (DN)



**241. LARGE JAR.** 8.75ins tall, **dark red/ brown** glazed, **red** earthenware jar, glaze rim wear. NR £30-40+. (DN)

**242. SMALL INKWELL.** 1.75ins tall, **dark red/ brown** glazed **red** earthenware straight sided small travellers inkwell. Rim chip. NR £20-30+. (DN)



**243. INKWELL.** 1.75ins tall, **dark red/ brown glazed red** earthenware, circular inkwell, central well, one quill hole. Good. NR £30-40+. (DN)

**244. LARGE HANDLED JAR.** 9ins tall, **dark red/ brown** glazed **red** earthenware, chips & glaze wear to rim. NR £30-40+. (DN)



**245. LARGE COOKING VESSEL.** 10.75ins tall, 10ins diam, **dark red/ brown glazed red** earthenware, twin handled, shaped pouring rim. Hairline from rim. NR £30-40+. (DN)



**246. BOTTLE/ PORTER.** 9.75ins tall, **dark red/ brown glazed red** earthenware, straight sided with double collar lip. Minor glaze wear, small lip chips. NR £50-60+. (DN)



**247. SALT GLAZE SPITTON.** 3.5ins tall, 7ins diam, top **dark brown** glaze, side with raised scrolls in **white**. Delightful varying glaze - Brampton? Very good. NR £60-80+.



**248. BRAMPTON BUTTER DISHES.** Both 2ins tall, one 4.5 across other 3.75ins. Pale **tan** salt glaze, lions head handles, raised floral sprigs all round. (2) Good. NR £40-60+.



**249. WESTERWALD BOTTLE.** 5ins tall, bulbous bodied Bellarmine shape, rear handle, **grey** glaze with **blue** touches. A delightful small, **very early**, example. Some minor (old) base nibbles, generally good. NR £40-60+.





### Co-operative plates.

**250. CO-OP PLATE.** 9.5ins diam, fancy green boarder, gold highlights, black premises transfer 'DAISYFIELD INDUSTRIAL BEES... 1902'. Very good. NR £20-30+.

**251. POYNTON & WORTH CO-OP PLATE.** 9.5ins diam, fancy border, gold highlights, detailed sepia premises transfer 'POYNTON & WORTH/ ... 1861 JUBILEE 1911'. Plus octagonal, sepia transfer, bird & flowers. Hairline & edge chips. (2) NR £20-30+.



**252. RADCLIFFE & PILKINGTON CO-OP PLATE.** 9.5ins diam, fancy border, gold highlights, detailed sepia premises transfer 'REDCLIFFE & PILKINGTON DISTRICT CO-OP INDUSTRIAL SOCIETY LTD/... 1860-1910' plus 'PRIMITIVE METHODIST CENTENARY 1807-1907' blue, white & gold. 9.75ins diam. (2) Good. NR £20-30+.

**253. LOWER DARWEN CO-OP PLATE.** 9.5ins diam, gold

highlights, sepia transfer 'LOWER DARWEN/ COOP ... 1860-1910/ HODDLESDEN' 9.5ins diam. Premises pictured. (2) Good. NR £20-30+.



**254. NEW SWINDON CO-OP PLATE.** 9.25ins diam, fancy border, gold highlights, sepia premises transfer 'NEW SWINDON/ INDUSTRIAL CO-OP... FOUNDED 1861 JUBILEE 1911'. Plus 'PRIMITIVE METHODIST CENTENARY 1807-1907', blue, white & gold transfer. (2) Good. NR £20-30+.



### 255. WINSFORD CO-OP PLATE.

9.5ins diam, fancy border, gold highlights, sepia premises transfer 'WINSFORD INDUSTRIAL/ COOP 1860 JUBILEE SOUVENIR 1910'. Plus 'HONLEY INDUSTRIAL & EQUITABLE... SOCIETY JUBILEE 1861-1911. Shop premises pictured (slight fading). (2) NR £20-30+.



### Commemorative plates.

### 256. PRESTON GUILD HALL PLATE.

9.5ins diam, fancy border, gold highlights, detailed pink transfer Guild Hall, coat of arms, 'SEPT 1902 PRESTON GUILD & EARL

DERBY KG GUILD MAYOR' on right. Very good. NR £20-30+.

**257. OPENSHAW PLATE.** 10ins across, gold border, detailed bluey-green transfer 'ST BARNABA'S CHURCH/ OPENSHAW... JUNE 5TH 1837... OCTOBER 1839'. Very good. NR £20-30+.



### 258. BLACKBURN TOWN HALL TEAPOT STAND?

6.5ins diam, white glaze pink border, black transfer of 'TOWN HALL BLACBURN'. Very good. NR £20-30+.



### ABSENTEE BIDDING

Following a reneged bid BBR insists ALL Postal Bid sheets **MUST HAVE FULL C.C. details** - or bids **NOT ENTERED!**



**259. CHURCH PLATES.** 'ST PAULS ... RAMSBOTTOM' green border, gold highlights. **Plus** 'CONGREGATIONAL CHURCH BARROWFORD'.

**Plus** 'OLDHAM/ QUINCENTARY BAZAAR 1906'. **Plus** '... LITTLE CURRENT ONTARIO CANADA'. **Plus** 'WENSLEYFOLD/ SUNDAY SCKOOL 1909'. (5) Very good. NR £30-40+.



**260. QUEEN VICTORIA JUBILEE PLATE.** 9.5ins across, **black** transfer of young & old portraits 'VICTORIA... JUNE 20TH 1837 JUBILEE YEAR 1887'. Hairline & small chips underside. NR £20-30+.

**261. QUEEN VICTORIA JUBILEE PLATE.** 9.5ins across, **black** transfer of Queen Victoria 'JUBILEE YEAR... 1886 BORN MAY 24TH 1819 ASCENDED THE THRONE JUNE 20TH 1837'. Good. NR £20-30+.



**262. QUEEN VICTORIA JUBILEE PLATE.** 9.5ins across, **black** detailed transfer **red & yellow**, 'VICTORIA QUEEN & EMPRESS/ JUBILEE YEAR 1887' detailed portraits, Britannia coat of arms etc. Small chip underside. NR £20-30+.



**263. ROYAL PLATE.** 9.5ins across, detailed **black** transfers of Queen Alexandra (?) & Edward VII? Good. NR £20-30+.



**264. STANLEY EXPEDITION PLATE.**

9.5ins across detailed transfer of Stanley & Dr Emin Bey 'STANLEY ARRIVED... CAPE TOWN MAR 10TH ... THE EMIN PACHA ...'. **Plus** Fred Archer octagonal plate, pictorial transfer lots of info'. (2) Good. NR £20-30+.



**265. RIGHT HON JOSEPH CHAMBERLAIN PLATE.** 9.5ins across, **black** pictorial transfer, 'RIGHT HON

JOSEPH CHAMBERLAIN MP'. **Plus** 'REVEREND C.H. SPURGEON' plate. (2) Good. NR £20-30+.



**266. LORD RANDOLPH CHURCHILL PLATE.** 9.5ins across, **black** transfer of 'LORD RANDOLPH CHURCHILL...

1886'. **Plus** GLADSTONE plate **black** transfer portrait & lots of information. (2) Good. NR £20-30+.



**267. MARQUIS OF SAILSBURY PLATE.** 9.5ins diam., **black** transfer 'RIGHT HON' MARQUIS OF SALISBURY'

coloured floral border. **Plus** 'RIGHT HON BENJAMIN DISRAELI...' plate, **black** transfer. (2) Good. NR £20-30+.



**267A. JAMES FRASER LORD BISHOP OF MANCHESTER PLATE.** 9.5ins across **black**

transfer, portrait etc. **Plus** 'RIGHT HON' MARQUIS OF SALISBURY K.G.' **black** detailed transfer, plate. (2) Good. NR £20-30+.





**268. CHARLES STUART PARNELL PLATE.** 9.5ins diam, black transfer 'CHARLES STUART

PARNELL M.P.' plus 'RIGHT HON JOSEPH CHAMBERLAIN M.P.' plate (2) Good. NR £20-30+.

**269. GLADSTONE PRIME MINISTER PLATE.** 9.5ins across, black

transfer & lots of info'. Plus circular plate coloured portrait of William Ewart Gladstone (hairline & chip). (20 NR £20-30+.



**Pub jugs**



**271.**

**BEEHIVE**

**BREWERY LARGE JUG.**

9.25ins tall, white glaze, black transfer - highly detailed pictures: shop premises both sides, hops vines to rim etc. 'J. POWELL'S XX & XXX/ ALES' to front 'BEEHIVE BREWERY LIVERPOOL' below. Coat of arms under base 'ELSMORE & FORSTER'. Despite restoration this is an exceptionally rare, early, beer receptacle of some significance. NR £400-600+. (JR)



**272.**

**AINTREE PUB NAMED JUG.** 8.5ins tall, white glaze. 'W. WATKINSON/ THE OLD ROAN INN/ AINTREE/ 1871' in gold lettering, front with cock fighting scenes & 2 Jester type figures each side. Old rivet handle repair. NR £120-150+. (JR)

**273. HANLEY PUB JUG.** 6.25ins tall, white glaze

coloured print of stag & deer. 'J. GOLDSTRAW/ BEER & STOUT BOTTLER/ WINE & SPIRIT STORE/ ST JOHN ST HANLEY/ CASKS SUPPLIED TEL 262' in brown below rim. Chip inside rim. NR £60-80+. (JR)



**274.**

**CHESTERFIELD PUB JUG.** 5.5ins tall white glaze coloured portrait of Queen Victoria '1837 JUBILEE 1887' one side, crown & cushion other 'CHRISTMAS/ 1887/ FOX & CO WINE & SPIRIT/ MERCHANTS/ BIRMINGHAM/ AND CHESTERFIELD' front. Faint rim hairline. NR £60-80+.

### SALE DAY FLOOR BIDDERS

All lots sold **AS SEEN**. Bidders must ensure items meet personal condition standards.



**275. PEACE JUG.** 6.5ins tall, **white** glaze, **green** transfer - Britannia in chariot pulled by lions, holding portraits of George III & Napoleon, St Pauls Cathedral to front, cherubs below holding sash 'MAY PEACE BE RESTORED' (end of Napoleonic War). Restored pouring lip. NR £60-80+. (GM)



**276. GOING TO THE DERBY JUG.** 9ins tall, **white**

glaze, **black** transfer, **gold** highlights to rim & handle, 2 men on donkey carts racing each other. 'GOING TO THE DERBY MANUFACTURED BY W.T. COPELAND & SONS' printed under base. Very good. NR £60-80+. (GM)



**277. MEYNELL HUNT SCOTCH WHISKY PUB JUG.** 4.5ins tall, **white** glaze, **red & black** transfer 'MEYNELL HUNT'/'SCOTCH WHISKY' huntsman on horseback both sides. Pouring lip repair. NR £30-40+. (NL)

**278. McNISH PUB JUG.** 3.25ins tall, **white** glaze, **green** plaid print 'McNISH'S/ SPECIAL SCOTCH WHISKY', 'McNISH' both sides. Dunn Bennet p.m. Very good. NR £30-40+. (NL)



**279. DEWAR'S PUB JUG.** 5.25ins tall, Doulton jug, **green** top, lower **tan** salt glaze 'DEWAR'S/ WHISKY' **white** raised lettering, sprigged motifs all round. Royal Doulton p.m. NR £20-30+. (DD)



**280. MUNRO'S PUB JUG.** 4ins tall, **white** glaze **coloured** transfer 'MUNRO'S/ DALWHINNIE WHISKY' coat of arms above. Rear 'SUPPLIED TO... HOUSE OF LORDS'. 'A.J. Brooks & Co Mirfield' to base. Silver rim wear. Very rare. NR £30-40+.

**281. JOHN HAIGS PUB JUG.** 4ins tall, **blue & white** corcodile skin body effect. '... KING GEORGE V & KING OF SPAIN/ JOHN HAIGS/ GLENLEVEN' one side, 'JOHN HAIGS LIQUEUR' other. Fieldings Stoke on trent p.m. Very good. NR £30-40+.



**282. THE MONARCH PUB JUG.** 6ins tall, Doulton jug, **blue** top, lower **tan** salt glaze **black** transfer 'MONARCH... HORNSEY ROAD... JAMES MARR'S COMPLIMENTS'. Other side '1805-1905/ ADMIRAL LORD NELSON' large detailed pictorial. Royal Doulton p.m. Very good. NR £60-80+. (DD)



### follow BBR on Facebook

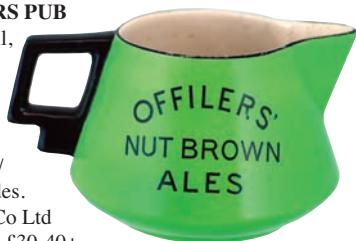
Auction results, News & Updates regularly added to FB - befriend us!



**283. GREERS PUB JUG.** 4ins tall, **white** glaze, **red & black** transfer 'GREER'S/O.V.H./ SCOTCH WHISKY' both sides. Most **gold** edging complete. Shelly base transfer. Very rare small size. Very good. NR £40-60+. (NL)

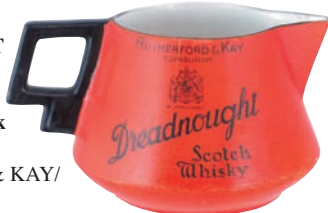
**284. OFFILERS PUB**

**JUG.** 3.5ins tall, **green** glaze, **black** handle, **black** print 'OFFILER'S NUT BROWN/ALES' both sides. T.G. Green & Co Ltd p.m. Good. NR £30-40+. (NL)



**285.**

**DREADNOUGHT PUB JUG.** 3.5ins tall, **red** glaze, **black** handle, **black** transfer 'RUTHERFORD & KAY/ EDINBURGH/ DREADNOUGHT SCOTCH WHISKY' both sides. Slight glaze wear one side. NR £60-80+. (NL)



**286. WALLER'S PUB JUG.** 5ins tall, **blue** crocodile skin effect body 'WALLER'S/ FINE OLD CREAM OF SCOTCH/ WHISKY' **black** transfer on **white** one side. 'WALLER'S FINE ALES & STOUT' other. Foley p.m. Some silver rim & handle glaze wear. NR £60-80+.



**287. WESTMINSTER BREWERY DOULTON MATCHSTRIKER.** 3.5ins tall, top **blue** glaze, lower **tan** striking area. 'WESTMINSTER BOTTLED BEERS' raised top lettering, 'WESTMINSTER BREWERY CO LTD' round shoulder. Royal Doulton p.m. Extremely rare offering. Very good. NR £60-80+.



**Pharmacy**



**288. COPELAND SPODE INVALID FEEDER.**

2.75ins tall, **blue & white** landscape design.

(Italian Tower?) Copeland Late Spode p.m. Very good. NR £20-30+. (NL)

**289. MEDICINE SPOON.**

3.5ins long, **white** china curved handle with coloured floral design to both sides. Very good. NR £30-40+. (NL)



**290. MEDICINE SPOON.**

3.5ins long **white** china curved handle to rear with **gold** highlights to rim & handle. Very good. NR £20-30+. (NL)

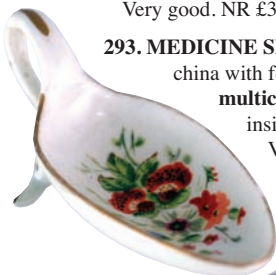


**291. MEDICINE SPOON.** 4ins long, **white** china with graduation marks inside 'TABLE' 'DESERT' & 'TEA'. Very good. NR £20-30+. (NL)





**292. MEDICINE SPOON.** 4ins long, **white** china with fancy footed handle, **multicoloured** floral design to inside & **gold** highlights to rim & handle. Very good. NR £30-40+. (NL)

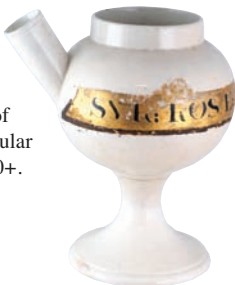


**293. MEDICINE SPOON.** 4ins long, **white** china with footed curved handle **multicoloured** floral design to inside with gold highlights. Very good. NR £30-40+. (NL)



**294. MEDICINE SPOON.** 3.25ins long, covered medicine spoon, **blue & white** floral design, footed curved handle to rear. Very good. NR £20-30+. (NL)

**295. DRUG JAR.** 8.25ins tall, **cream** ware drug jar 'SYR: ROSAE:' in **gold & black** painted label (syrup of roses). Spouted type on circular foot. Spout chip. NR £60-80+.



**296. DRUG JAR.** 10.5ins tall to top of domed lid, **pale blue** opaque glass. 'UNG: SAMB: V' in **gold, red & black** painted label. Very good. NR £60-80+.

**297. LARGE CHEMISTS DISPLAY BOTTLE.** 14ins tall to top of stopper. **Dark purple** glass, **gold, red & black** painted label 'TR. FER: PER: CH:'. Ground base pontil. Very good. NR £80-100+.



**298. STOTHERTS COD LIVER OIL BOTTLE.** 10.5ins tall to top of original stopper, **cobalt blue** glass, original label 'COD LIVER OIL EMULSION STOTHERTS' both sides. **Plus** **cobalt blue** glass cylinder bottle 9.5ins tall. (2) Good. NR £20-30+.



**299. PHARMACY GROUP.** (5) clear glass chemists rounds recessed labels under glass - **red, gold, white & black**. Tallest 9ins, chisel stoppers + clear glass measure, + rectangular bottle. (7) good. NR £40-60+.



**300. PHARMACY GROUP.** (5) clear glass chemists rounds recessed labels under glass in **red, gold, black & white** tallest 8.5ins. **Plus** large clear glass measure 9ins tall + sealed wine bottle

(not old) dated 'J.M. 1726' + 3piece mould bottle **olive green** glass. (8) good. NR £40-60+.

**301. PHARMACY GROUP.** (5) clear glass chemists rounds recessed labels under glass in **red, gold, black & white** tallest 9ins. **Plus** large **brown** glass cylinder poison bottle 11ins tall. (6) Good. NR £40-60+.



**302. PAIR OF DRUG JARS.**

6ins tall to top of lids, **gold** highlights, **black** lettering, **red/ orange** painted labels 'OPIUM' & 'ARSENIC' skull & crossbones to lids. 'P. Pages Apothicaire A Rodez' printed to base. (2) Good. NR £50-60+.

*P. Pages  
Apothicaire  
à Rodez*





**303. CERAMIC SHOP ROUND.** 9.75ins tall to top of domed lid, **pink & white** glaze with **gold & black** painted label 'UNG. ZINCI' with inner lining jar (usually missing). Rare large size. Very good. NR £60-80+.



**304. DRUG JAR.** 9ins tall to top of brass lid, **white** glaze with 'S/ ZINGIBERIS' in **blue** lettering with coloured floral surround. **Plus** DRUG JAR as other, with 'S/ CERAS. NIGR.'. Both spouted type. (2) Good. NR £30-40+.

**305. SHOP DISPLAY ROUND.** 13ins tall to top of **gold** domed lid. **Pale** yellow glass, **coloured** detailed front label - **gold, black, red, blue & white** 'ARROWROOT' below. *Royal Pharmaceutical piece.* Very good. NR £30-40+.



**306. 2 DR NELSONS INHALERS.** 6.75 & 5.75ins tall,



**white** glaze, **black** transfer 'DR NELSON'S/IMPROVED INHALER' inc's 'BOOTS' example corked glass mouthpiece. (2) Good. NR £20-30+. (GM)

## Advertising

**307. C.W.S. TIN ADVERT.** 20 by 14ins, **multicoloured** pictorial sign, various C.W.S. products 'C.W.S. TOBACCO'S'. Some damage to outside edge, surface scratches etc. NR £60-80+.



**308. C.W.S. TIN ON CARD ADVERT.** 19 by 13.25ins, coloured pictorial sign with maid, **black** leading fireplace, stylised man as a polish tin to side 'C.W.S./ PELAW GRATE POLISH/ (LIQUID)/ I'M A "GRATE" FRIEND OF MARY'S'. Surface marks, wear etc. NR £60-80+.



**309. ZOG MULTICOLOURED FRAMED ADVERT.** 14.75 by 11.75ins, pictorial advert - burglar wiping hand prints off door 'ZOG/ CLEANS WHITE PAINT'. Good. NR £30-40+.



**310. HONLEY C.W.S. FRAMED PHOTOGRAPH.** 10.5 by 8.5ins, **black & white** photo of wagon loaded with lots of C.W.S. products, 2 workers to sides. 'Concord St Honley 1912' to rear. Good. NR £20-30+.





**312. WELSH MAZAWATTEE TEA 1916 CALENDAR.**

29.5 by 19ins, little girl cradling a lamb 'MAZAWATTEE TEA/ JAMES GOSTLIER PROVISIONS MERCHANT/ ACREFAIR NEAR RUABON'. Good. NR £40-60+.



**314. BRADFORD THEATRE POSTER.**

Largest 36 by 12.5ins, 'THE PALACE THEATRE BRADFORD' 1933. Plus 'THE HISTORICAL PAGEANT/ PEEL PARK BRADFORD PROGRAMME'. Both framed (2) Good. NR £20-30+

**311. WILLS'S GOLD FLAKE FRAMED ADVERT.** 23 by 18ins, lady sat on high stool wearing white dress holding clown marionette golly below 'AS GOOD AS GOLD!' Cigarette packet at bottom. 'WILLS'S/ "GOLD FLAKE"/ CIGARETTES'. NR £40-60+. (JR)



**313. PEARS MULTICOLOURED ADVERT.** 19 by 15ins, little boy pictured 'THE PEARS BOY FACSIMILIE OF THE CELEBRATED PRINTING BY GREIGE'. 'PEAR ANNUAL 1902' above. Good. NR £30-40+.



**315. PEARS SOAP MULTICOLOURED ADVERT.** 19 by 15ins, baby in barrel/ bath, titled 'IMPUDENC', 'PEARS SOAP' above. Great image! Good. NR £30-40+.



**316. FRYS ADVERTISING MIRROR.** 30 by 11.5ins, 'FRY'S/ EXTRA CREAM/ MILK/ CHOCOLATE' in red & yellow lettering. Good. NR £60-80+.



**317. FRYS CHOCOLATE BOX.** 5.25 by 3.5ins, top pull-out section of boy with harp 'FRY'S PURE CONCENTRATED COCOA'. Pictorial label beneath lid. NR £20-30+. (JR)



**318. ENAMEL SIGN.** 18 by 9ins, 'POLICE/ AMBULANCE/ FIRE BRIGADE' in blue, green & red lettering on white. Minor outer edge rust etc. NR £40-60+.



**319. PAIR OF METAL SIGNS.** Colmans Starch 12 by 8ins, 'COLMAN'S/ STARCH' white lettering, red & black background. Plus Puck Matches 12 by 8ins, 'BRITISH MATCHES FOR BRITISH HOMES...' white & black lettering on red. (2) Good. NR £20-30+.



**CONDITION - help us to help you!**

If you spot condition differences we have not please advise BBR staff. We always announce such amendments prior to the sale.



**SIGN.** 18 by 6ins, 'COLMAN'S/ MUSTARD' black lettering on **yellow**. Outer edge rust etc. NR £20-30+.

**321. DOUBLE SIDED ENAMEL SIGN.** 18.5 by 12ins, 'YOU MAY TELEPHONE/ FROM HERE' **white** lettering on **dark blue**. Outer edge chips & rust etc. NR £40-60+.



**322. LYON'S TEA METAL SIGN.** 18 by 9ins, 'LYON'S/ TEA/ SOLD HERE' **white, yellow & black** lettering, **blue** background. NR £20-30+.



**323. SIDDONS BOX IRONS ENAMEL SIGN.** 18 by 12ins, 'SOLD HERE/ SIDDONS' IMPROVED BOX IRONS/ ONCE USED/ ALWAYS USED...'. Irons pictured, some fading. **Blue** lettering on **white**. Outer edge rust, chips, etc. NR £30-40+.



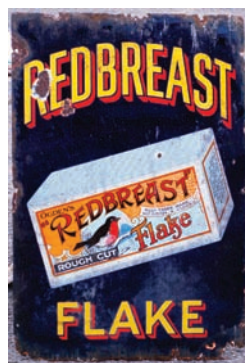
Chips, rust & surface chips etc. NR £30-40+.

**325. 3 ENAMEL SIGNS.** 'ST BRUNO FLAKE' 36 by 24ins. **Plus** 'BROOKE BOND TEA'. **Plus** 'LYONS ICE CREAM...'. 34 by 22ins. All have outer edge chips, rust & surface marks etc. (3) NR £20-30+.



**320. COLMAN'S MUSTARD ENAMEL**

**326. REDBREAST FLAKE ENAMEL SIGN.** 36 by 24ins, 'REDBREAST/ FLAKE' in **red & yellow**. Pictorial tobacco packet to centre. Outer edge chips, rust & surface marks etc. NR £60-80+.



**327. GROUP OF TINS.** Rowntrees Toffee tin **plus** 'SHELL MOTOR SPIRIT' can **plus** McVitie & Price biscuit tin. (3) NR £20-30+.



**328. PONTILLED INKWELL.** 1.5ins tall, 2ins diam. **Cobalt blue** glass, straight sided circular well, raised rim. Base pontil scar. Most unusual. Very good. NR £50-60+. (MH)



**329. TEAKETTLE INK.** 2ins tall, **amber** glass tapering octagonal form, upturned spout. Delightful (scarce) small size. Very good. NR £120-150+. (MH)

**330. RUGBY BALL SHAPE CERAMIC INKWELL.** 2.25ins tall, **orange** glaze with **black** lace & stitching to rugby ball c.1891. Good. NR £20-30+. (MH)



**Email contact** - always ensure your email is included on your absentee bidding sheet!



**331. POLYGON INKWELL.** 1.75ins tall, unusually **light blue** glass example, embossed 'POLYGON'. Side pen rest to top. Registration No. 769008 1932. Very crude. Very good. NR £20-30+. (MH)



**332. RAILWAY WAGON INKWELL.** 2.5 by 3.5ins. Wooden railway wagon - lid lifts to reveal ceramic inkwell. Chip to buffer. NR £20-30+. (MH)

**333. TORQUAY WARE CERAMIC INKWELL.**

1.75ins tall, 2.5ins diam, at base, **cream, brown, blue & green** glaze 'DAUNT EE KEEP/ TALKIN BOUT IT/ BUT DU' EE TAK AN WRITE' in **brown** lettering. Good. NR £20-30+. (MH)



**334. DESK INK.** 2 1/8ins tall, **olive green** glass square shape ink, offset neck, pen rest to top. Small lip flake. Great colour. NR £20-30+.

**335. PATENT**

**INSTAND.** 2.75 by 4.25ins long at base. Round clear glass inkwell on cast iron base. Side lever lifts off inkwell top. NR £30-40+. (GM)



**336. RUBY GLASS INK.**

1.75ins tall, rare Danish inkwell - stunning **ruby red** glass, stepped circular shape, ground lip. Very good. NR £40-60+. (MH)



**337. PONTILLED AMERICAN INKWELL.**

1.5ins tall, 2.25ins diam, **dark olive green** glass, circular inkwell raised geometric outer edge decoration. Good. NR £40-60+. (MH)



**338. GROUP OF 4 INKS.** Upright barrel 3.5ins tall, **plus** pumkin, **plus** 'TRUSCOT' embossed, **plus** round bottomed example. All aqua glass, some surface dullness. (4) NR £20-30+.



**339. TEAKETTLE INK.**

2.75ins tall, **lime green** glass, stylish pear shape form with twelve curved body segments, octagonal upturned spout with smooth ground lip. Very good. NR £170-200+. (MH)



**340. TEAKETTLE INK.**

3ins tall, opaque **white** milk glass, stylish pear shape form, 6 raised segments, octagonal upturned spout, brass lift off cap. Very good. NR £120-150+. (NL)



**341. TEAKETTLE INK.**

2.75ins tall, clear glass, pear shape, 12 curved body segments, octagonal upturned spout, ground lip (small chip). NR £60-80+. (MH)



**342. PERRY & CO PATENT INKSTAND.**

2ins tall 3ins long at base. **Pale blue** ceramic inkwell on metal stand 'PATENT PERRYIAN GRAVATATING INKSTAND/ PERRY & CO LONDON'. Good. NR £60-80+. (NL)





**343. CUT GLASS INKWELL.** 3ins tall to top of lift off brass cap, **pale blue** cut glass base. Good. NR £30-40+. (MH)

**344. VINTAGE CAR INKWELL.**

2.25ins tall, 5ins long, **white** metal inkwell in form of a vintage car, ceramic inkwell under lid. Good. NR £20-30+. (JR)

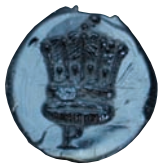


**Black glass & sealed wines**



**345. SEALED CYLINDER WINE BOTTLE.**

11.25ins tall, **dark olive green** glass applied collar lip, pontil scar, seal with initial 'P' under an Earls coronet. Very good. NR £80-100+. (CM)



**346. CAMBRIDGE SEALED WINE BOTTLE.** 11.5ins tall, **dark olive green** glass, 3

piece mould, applied double collar lip seal with 'E. MAN/ COLL' (Emanuel College Cambridge). very good. NR £60-80+. (CM)



**347. SEALED CYLINDER WINE BOTTLE.**

11.25ins tall, **dark olive green** glass, 3 piece mould, applied double collar lip. Seal with 'EMANUEL COLLEGE'. Very good. NR £60-80+. (CM)



**348. SEALED CYLINDER WINE BOTTLE.** 10.75ins tall, c.1800 **dark olive green** glass, applied collar lip base

pontil. Mid body seal with crest attributed to Sir Reginald Pole Carew of Devonshire. Slight rear lip flake. *Ex John Harvey & Son Bristol Museum Collection.* NR £60-80+. (CM)



**349. SEALED CYLINDER WINE BOTTLE.** 11.75ins tall, **dark olive green** glass, 3 piece mould applied

double collar lip, seal with initials 'W.H.P.' Some lower body dullness. NR £60-80+. (CM)

**350. CYLINDER WINE BOTTLE.**

10.75ins tall, **dark olive green** glass, long tapering neck with applied collar with deep pontilled kick up base. Good. NR £20-30+. (CM)



**Single items or complete collections to sell?**

Contact BBR for confidential, sound & professional advice:  
tel: **01226 745156**  
email: **sales@onlinebbr.com**



**351. WINE BOTTLE.** 10.25ins tall, **olive green** glass onion shape with long tapering neck with smooth lip & base pontil. Good. NR £20-30+.

**352. TRUFFLE? BOTTLE.** 9.5ins tall, **dark olive green** glass cylinder with applied lip. Good. NR £20-30+.



**353. PERFUME (?) BOTTLE.** 3.5ins tall, **ruby** glass spherical shape, applied lip & base pontil. Unusual early item. NR £30-40+.

**354. WINE LABEL ALBUM.** 11 by 8.5ins, containing lots of wine labels. NR £20-30+.



#### Kitchenalia

**355. TONGUE PRESS.** 9.25ins tall, **white** glaze, **black** transfer. metal base with handle 'BEECHWOOD/FINEST/ TONGUE'

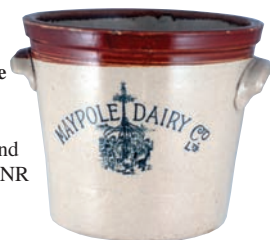


below rim 'INSTITUTE OF HYGENIC ROYAL CHARTER CERTIFICATE' pictures below 'BEECHWOOD/ PLYMOUTH'. Good. NR £50-60+. (GM)



**356. SALT JAR.** 5.5ins tall to top of flat lid, **off white** glaze, imp'd lettering 'WESTON & WESTALLS/ SUPERIOR/ BRITISH TABLE SALT/ LONDON'. Good. NR £20-30+.

**357. BUTTERCROCK.** 8.5ins tall, 10ins diam, **brown** top, lower **off white** glaze, **black** transfer 'MAYPOLE DAIRY CO LTD' children dancing round maypole. 12lb size. Good. NR £60-80+.



**358. CARTERS LITTLE LIVER PILLS COVERED JAR.** 9.5ins tall to top of lid, **white** glaze, **black** transfer, **black** musicians 'THE JUBILEE SINGERS' - lots of printing all round & to lid. British pottery p.m. Very good. NR £30-40+.

**359. CORNISHWARE FLAT TOPPED STORAGE JAR.** 4.25ins tall 'STARCH' **blue & white** bands, **black** shield mark p.m. Good. NR £30-40+.



**360. CORNISHWARE FLAT TOPPED STORAGE JAR.** 4.25ins tall, 'COFFEE' **blue & white** bands, **black** shield mark p.m. Chip to lid. NR £20-30+.



**361. CORNISHWARE GROUP.** **Yellow & white** bands, 'BUTTER' dish 4.25ins tall, & milk jug 3.25ins tall. Green shield p.m. Good. NR £30-40+.

**362. COLMANS MUSTARD JAR.** 3.25ins tall, **white** glaze, **red & gold** transfer 'GENUINE DE COLMAN MOUTARDE' with medal awards pictured all round. Copeland p.m. Some rim & base chips. NR £30-40+.





**363. MILK BOILER.** 7ins tall, white glaze, black transfer 'THE EDDYSTONE MILK BOILER. REGD NO 526628/ GOURMET & CO/ LONDON'. Base chip. NR £30-40+. (GM)



**364. GRIMWADES QUICK COOKER.** 4.5ins tall, 7.25ins diam, white glaze green transfer 'THE "QUICK COOKER" BOWL'. Grimwades with original illustrated instructions. Good. NR £30-40+. (GM)



**365. GRIMWADES QUICK COOKER.** 3.75ins tall, 6ins diam, white glaze, green transfer 'THE "QUICK COOKER"'. Grimwades/ PAT NOS 12835/ 09/ 1304/ 09' with pictorial instructions. Good. NR £30-40+. (GM)

GRIMWADES/ PAT NOS 12835/ 09/ 1304/ 09' with pictorial instructions. Good. NR £30-40+. (GM)



**366. GRIMWADES ADVERTISING PLATE.** 8.75ins diam, 1910 calendar one side reverse covered in green transferred pictorial

Grimwades products: pie funnel, pie dish, milk bowl, hygienic pudding bowl, household jars, factory premises at top. Very rare. Good. NR £40-60+. (GM)

### EITHER OR... BBR's unique option

Bidders, on a tight budget, to have more chance to obtain something for collections - keep instructions simple & clear!

**367. LARGE BUTTERCROCK.** 9.75ins tall to lid top, tan glaze top & lid, lower off white glaze, black transfer 'MAC SYMON'S STORES LTD... LIVERPOOL/ ARGYLE ST GREENOCK...' pictorial t.m. lady with scales, lighthouse in background. Caledonian Pottery t.m. 12lb size. Rim & lid chips. NR £80-120+. (JR)



### 368. THE GOURMET STERILIZER.

4.5ins tall to top of metal closure, white glaze, black transfer 'THE GOURMET STERILIZER/ CHALLIS NO 4 PATENT' plus 'SAM CLARKE'S/ PYRAMID FOOD WARMER', white glaze, black transfer. Lots of printing all over. (2) Good. NR £30-40+. (GM)



**369. RINGTONS TEA, TEA CADDY.** 7.5ins tall, blue & white, willow pattern design 'RINGTONS... NEWCASTLE UPON TYNE' to base. Very good. NR £20-30+.



**370. RINGTONS TEA BOWLS.** Tallest 5.5ins to top of lid, blue & white pictorial transfers showing: castle, Abbey's, Minsters, Windsor Castle, Edinburgh Castle, York Minster, Tyne Bridge etc. (2) Very good. NR £20-30+.



**371. RINGTONS TEA JAR.** 7.75ins tall to top of lid, hexagonal, blue & white transfers: Cathedrals - Durham, Newcastle, Ripon, Carlisle, York Minster. 'Ringtons Tea Merchants' to base. Very good. NR £30-40+.





**372. CHEESE JAR.** 6.25ins tall, brown top, lower **off white** glaze, **black** transfer 'FORTNUM & MASON LTD/ FINEST ENGLISH STILTON CHEESE', by appointment coat of arms. Very good. NR £20-30+. (GM)

**373. MILK BOILER.** 6ins tall, **white** glaze, **black** transfer 'THE CASCADE BOILER/ PATENT NI 1326'. Slight top edge nick. NR £20-30+. (GM)



**374. MILK BOILER.** 4.5ins tall, **white** glaze, **black** transfer 'THE CASCADE BOILER/ PATENT NO 1326'. Good. NR £20-30+. (GM)



**375. ROCK BLUE BOTTLE.** 7.5ins tall, **blue** top, **blue** transfer 'ROCK BLUE/ 14 GOLD MEDALS/ W.R. HATTON & SONS LTD/ WORMWOOD SCRUBS LONDON'. W. Buchan p.m. Good. NR £30-40+. (GM)



**376. WATER FILTER.** 18ins tall to top of lid, tapered shape in **cream** glaze, raised coat of arms. 'RICHARD'S PATENT & SELF FITTING FILTER' in raised lettering to scrolls above & below, brass tap & internal filter. Good. NR £60-80+.



**377. BUTTERCROCK?** 7.5ins tall to top of lid, **tan** glaze, lady snufftaker cartouche to front. Scroll above. Good. NR £30-40+. (GM)



**378. SLICER.** 13.5ins long. Metal bean? slicer 'STERLING SLICER' in raised lettering & 'N.R.S & Co. ROCHESTER N.Y.' to fixing bracket. NR £30-40+. (GM)



**379. MAYONNAISE MIXER.** 13ins tall, handle to top, glass jar embossed 'UNIVERSAL/ MAYONNAISE MIXER AND CREAM WHIPPER...'. Fixing bracket below. NR £30-40+. (GM)



**380. BRASS BOTTLE JACK.** 13ins long, clockwork meat roasting jack. Plus goffering iron 7.5ins tall. (2) NR £30-40+.



**381. EGG BABY DOLLS.** Largest 2.75ins tall, bisque type baby doll, encased in a **white** glazed egg 'DON'T FORGET ME/ I'LL BE WITH YOU SOON' to top (hairlines). **Plus** smaller bisque baby appearing out of egg. (2) NR £20-30+. (JR)



**382. GROUP OF DOLLS HEADS.** 5 bisque dolls heads **plus** (6) head & body types **plus** head & shoulder china example. Some with staining etc. NR £20-30+.



## POSTAL BIDDERS

Postal bidders must satisfy **themselves** lots meet their condition standards. For a more detailed personal assessment tel. BBR, give lot numbers, call back later to speak with AB.



**383. ROBERTSON'S 2 CERAMIC FLOUR SHAKERS.**

4.75ins tall, both featuring Golly figures. **Plus** 'VW' salt 'n' pepper pots,

**plus** 2 hen figures & candle in glass. (7) £20-30+.

**384. 2 COPPER PANS.** With dovetail joints, one with lid, **plus** copper twin handled bowl. (3) Good. NR £30-40+.



**385. LARGE OVAL SHAPE COPPER PAN.** 6ins tall, 14ins across with lid, engraved initials 'A.B.' to pan & lid. Good. NR £30-40+.



**386. 2 COPPER KETTLES.** 11 & 8.25ins tall, one with dovetail joint, **plus** brass candle stick 4.25ins tall. (3) Good. NR £30-40+.



**387. 2 COPPER BED PANS.** 3ft 4ins long, both with wooden handles & copper pans with engraving. **Plus** copper hunting horn, 3ft 11ins long. (3) Good. NR £30-40+.

**388. SET OF SCALES.** 8.25ins tall, cast iron base marked 'LIBRA SCALE CO' with brass pans & 5 brass bells weights. Good. NR £20-30+.



**389. SET OF SCALES.** 7ins tall, cast iron base marked 'W & T AVERY BIRMINGHAM' with brass pans & set of weights. Good. NR £20-30+.



**389A. STAFFORDSHIRE POTTERS SOUVENIR PLATE.** Standard size. Highly elaborate transfer - Imperial hall interior 'PRAY/ FOR THE TENS OF THOUSANDS OF/ STAFFORDSHIRE POTTERS/ WHOSE/



CROCKERY WARE/ IS UPON YOUR TABLE EVERY DAY' etc. NR £20-30+.

**Minerals & patents**

**390. HORNERS PATENT HAMILTON.** 8.5ins long, aqua glass, elongated form internal glass stopper. Original metal lip fitting 'HORNERS PATENT'. Lots of seed bubbles. Minor neck area haze, overall good. NR £40-60+. Rare. (GM)



**391. FLAT INDENTS PATENT CODD BOTTLE.** 8.75ins tall, aqua glass. 4 square indents to shoulder. ... THE/ NEWCASTLE/ BREWERIES LIMITED' to front 'T. TURNER & CO/ MAKERS/ DEWSBURY' to rear. Very good. NR £30-40+. (GM)





**392. BURY ROUND BOTTOMED CODD HYBRID.** 7.5ins long, aqua glass embossed 'MATTHEW POMFRET... BURY' to front 'CODDS PATENT/ 4/ MAKERS/ CODD & RYLANDS/ BARNESLEY' to rear. As dug. Very good. NR £40-60+. (GM)

**393. BURY PATENT 4 CODD BOTTLE.**

7.5ins long, slim neck codd bottle embossed 'MATTHEW POMFRET LIMITED... ALBION WORKS/ BURY' to front 'CODDS PATENT/ 4/

RYLANDS & CODD/ MAKERS STAIRFOOT/ BARNESLEY' to rear. Cleaned. NR £20-30+.



**394. CODD PATENT 4 HAMILTON HYBRID.**

9.5ins long, aqua glass. Heavily embossed one side 'CODD'S/ PATENT/ 4/ LONDON/ S.E.' Absolutely screaming mint condition - & with a light green marble. Exc/ A1. NR £60-80+. (GM)

**395. DEEKS PATENT CODD BOTTLE.** 7.25ins

tall, aqua glass embossed 'PROPERTY... MATLOCK/ MINERAL WATER CO/ OCKENDON RD' to front 'MAKERS/ SYKES MACVAY & THE / CODD BOTTLE

CO LD/ CASTLEFORD' to rear. 'B' over a '2' to both shoulders. Uncleaned, very good. NR £60-80+. (GM)



**396. LEICESTER EARLY CODD BOTTLE.** 9ins tall, aqua glass, embossed 'S. CLEAVER/ CHEMIST LEICESTER' to front 'CODDS/ PATENT/ 18 LONDON/ S.E.' to rear. Heavy blobby lip. Some wear generally good. NR £30-40+. (GM)



**Soda syphons**



**397. CHESTERFIELD SODA SYPHON.** 13.5ins tall to top of chrome metal tap, fluted, pink glass, acid etched 'J.J. CLAYTON LTD CHESTERFIELD'. Partial rear label. Good. NR £30-40+. (GM)



**398. PLYMOUTH SODA SYPHON.** 11.75ins tall to top of pewter tap, clear glass acid etched 'C.J. PARK MPS/ MUTLEY/ PLYMOUTH'. Good. NR £20-30+. (GM)



**399. KENDAL SODA SYPHON.** 12.5ins tall to top of plastic tap, blue glass acid etched 'J. ALEXANDER & SONS/ AVENUE WORKS KENDAL'. Shoulder label. Good. NR £30-40+. (GM)

**Email contact** - always ensure your email is included on your absentee bidding sheet!

**400. LONDON SODA SYPHON.**

12.5ins tall to top of chrome tap, **green** glass acid etched 'VICTORIA WINE COMPANY LONDON'. Fabulous pictorial. Good. NR £30-40+. (GM)

**401. B. SHAW & SONS SODA SYPHON.**

12.25ins tall to top of chrome tap, **blue** glass acid etched 'B. SHAW & SONS/ LTD/ BRITISH SYPHON CO LONDON'. Good. NR £30-40+.

**402. SCHWEPPE'S SODA SYPHON.**

12ins tall to top of chrome tap, **amber** glass acid etched 'SCHWEPPE'S LIMITED PORCELAIN LINED SYPHON'. Good. NR £30-40+. (GM)

**403. BIRMINGHAM SODA SYPHON.**

12ins tall to top of chrome tap, clear glass, acid etched 'JOB WRAGG/ BIRMINGHAM' lettering picked out in a **light brown**. Good - a great looking piece! NR £30-40+. (GM)

**404. BIRMINGHAM SODA SYPHON.**

12ins tall to top of pewter tap, **blue** glass, acid etched 'JOB WRAGG/ BIRMINGHAM' lettering picked out in **dark brown**. Very striking. Good. NR £60-80+. (GM)

**follow BBR on Facebook**

Auction results, News & Updates regularly added to FB - befriend us!

**Toilets**

**405. EARLY VICTORIAN CABINET ENCASED TOILET.** 29.5ins tall, 26.5ins wide, 19ins deep. **Blue & white** decorated bowl with 'R.J WISS (Royal crest) PATENTEES...', toilet flap separately marked '(Royal Crest)/ R.WISS/ PATENTEE 38 CHARING CROSS/ LONDON'. See *BBR mag. issue 141*. An exceptionally rare offering complete - fantastic museum piece. Patented 1832. Very good. NR £200-300+ (GM)

**406. WOODEN CABINET ENCASED TOILET BOWL.** 19 by 25 by 21ins. **Blue & white** pictorially transfer (probably Spode?) Brass carrying side handles. Another extremely rare complete boxed example. NR £ (GM)



**407. 'PERFECTION' TOILET.** 17ins tall, ceramic toilet, **white** glaze, **blue** decoration 'PERFECTION'/ RD NO 173766' to inside of bowl with raised decoration in blue to front. See *BBR mag. issue 141*. NR £200-300+. (GM)





**408. 'WATERFALL CLOSET'**

**TOILET.** 16ins tall, ceramic toilet, white glaze with coloured floral design inside & out.

'WATERFALL/ CLOSET RD

NO 9867848' to inside of bowl. See

BBR mag. issue 141. NR £200-300+ (GM)



**409. THE "DELUGE"**

**TOILET.** 16ins tall, cream glazed with raised decoration 'PATENT RECESSED BACK' to rear 'THE "DELUGE" inside of bowl.

Some damage to rear of bowl. See BBR

mag. issue 141. NR £100-200+ (GM)



**410. 'DELUGE' CISTERN BRACKETS.**

Cast iron pair of brackets 16.5 by 16.5ins, leaf scroll design with the letters 'DELUGE' incorporated. (2) NR £30-40+. (GM)



**411. OZONITA SMALL HAND WASH BOWL.**

15ins tall, 11ins diam, ceramic bowl, blue & white floral decoration, on metal fittings 'OZONITA MORRISONS PATENT NO 17295/ 10' to bowl. See BBR mag. issue 141. Very pretty. Good. NR £120-150+ (GM)



**412. IMPROVED SANITARY CLOSET.**

9ins tall, beige glazed exterior, white glazed with blue floral decoration to interior 'IMPROVED SANITARY CLOSET'. Good. NR £60-80+ (GM)



**413. VICTORIAN DECORATIVE SINK.**

24 by 19.75ins, red/ brown & sepia transfer, highly decorative lemons & foliage transfer. 'GEORGE JENNINGS/ PATENT 1890 LONDON' transferred round waste area. Hot, cold & waste patent taps, with metal and ceramic centres. NR £250-300+.



**415. PAIR OF CISTERN BRACKETS.**

10 by 8.5ins, cast iron brackets with figure of boy? design. (2) NR £20-30+.



**STOP PRESS: exciting news**  
shortly - watch BBR Auctions  
on Facebook!!!



**416. OLDFIELD TOBY JUG.**

9.75ins tall, varying brown & tan salt glaze, seated toby, jug in hand pipe by his side. Imp'd 'OLDFIELD & CO/ MAKERS' to rear. Some restoration to jug & tricorne hat, still a great looking rarity. NR £150-180+.



**417. TOBY JUG.** 10ins tall, seated toby, jug in hand, small barrel between his legs, pipe by his side. **White** glaze, mottled **blue** jacket, **blue** tricorne hat & breeches, **yellow** waistcoat & **yellow** detail to stockings & shoes. Some restoration to tricorne hat & handle. NR £100-120+.



**418. DOULTON TOBY JUG.**

8.75ins tall, **coloured** salt glaze toby jug in a different colourway to usual. Designed by Harry Simeon introduced 1920's. Doulton Lambeth England imp'd base mark. Darker than standard plus an inward curving base. I suspect a very early version? Distinctly different.



Very good. NR £80-120+. (DD)

**419. DOULTON TOBY JUG.** 8.5ins tall, as previous lot but in a different colourway designed by Harry Simeon, c. 1920's. Doulton Lambeth England imp'd base mark & 8'572. Very good. NR £80-100+. (DD)



**420. TOBY JUG.** 9.75ins tall, **dark brown** shiny glaze, snuff taker toby jug. Base chip. NR £40-60+.



**421. DOULTON DISRAELI JUG.** 9.25ins tall, tan salt glaze, **silver** rim. 'BENJAMIN DISRAELI... DEC 21 1804... APRIL 19 1881' imp'd below rim. Raised medallion bust, coronet above. To front. 'I HAVE BEGUN SEVERAL THINGS...' to one side 'I WILL SIT DOWN NOW... HOUSE OF COMMONS 7 DEC 1837' to other. Doulton Lambeth & John Mortlock Oxford Street London base marks. Very good. NR £80-120+.



**422. DOULTON 'MONK' JUG.** 7.75ins tall, **brown & tan** salt glaze, hallmarked silver rim. Monks in relief eating and drinking to top half, florets below. Doulton Lambeth imp'd base marks. Very good. NR £60-80+. (DD)



**423. LORD NELSON JUG.** 8ins tall, **tan** salt glaze Lord Nelson character jug, rear rope handle. 'REPLICA OF ORIGINAL JUG/ MADE BY/ DOULTON & WATTS/ LAMBETH' impressed to base. Minute rim flake. NR £120-150+. (GM)



**424. HANNAH BARLOW**

**EXHIBITION JUG?** 16.25ins tall, large tapering shape, most of body featuring incised donkey, mother & foal - all on tan salt glaze ground, tree to side with grass & thistles. Rim & base in brown & green glaze. Incised Hannah Barlow initials beneath handle at rear, & base, with Doulton Lambeth p.m & various other marks. VSuperb/ exc/ A!. £800-1,200+.



**BBR's 2015 Elsecar Auctions:**  
**Jan 31/ Feb 1 BBR's WinterNational**  
**April 25/ 26 Spring Extravaganza**  
**July 4/ 5 the 25th UK SummerNational**  
**Oct 3/ 4 Autumn Extravaganza**

Suitable single items, or entire collections - drop off at Elsecar, or any Show countrywide. BBR can also pick up entire collections from anywhere in the UK.

tel: 01226 745156 email: sales@onlinebbr.com

**fabulous items destined for next year - & MORE!!**



Look out for **BBR's 2015 'On the Road' auctions**

pre-order the **FREE** pdf's off our website: **www.onlinebbr.com**

and there's more: **Stanley 14 Feb., Cirencester 29 March, Perth 2 May, Minstead 10 May, Ditton 17 May, Attleborough 24 May, Bowburn 6 June, Chessington 13 Sept (?)**

**BBR**  
AUCTIONS**BBR's WinterNational****Sat 31 Jan & Sun 1 February 2015**

Elsacar Heritage Centre  
S Yorks, S74 8HJ  
brown 'Elsacar Heritage'  
signs off jct 36 M1



the largest specialist bottle event of its type in Europe  
worth travelling to from **ANYWHERE** in the WORLD?

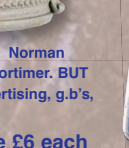
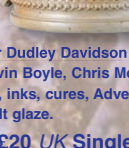
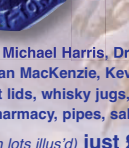
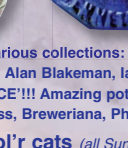
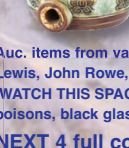
**Sat. 11 am Unres'd Auction**

500+ lots Blg 21 Elsacar Heritage Centre. Doors 9am, Auc 11am

**Sunday the BIG Show  
plus Cat'd Auc. 11am**

120-150 stalls E.E. 8.30am-5pm Ord Adm'n 10am-5pm Auc 11am

full col'r cat pdf £3  
[www.onlineebb.com](http://www.onlineebb.com)



Auc. items from various collections: Michael Harris, Dr Dudley Davidson Norman Lewis, John Rowe, Alan Blakeman, Ian MacKenzie, Kevin Boyle, Chris Mortimer. BUT 'WATCH THIS SPACE'!!! Amazing pot lids, whisky jugs, inks, cures, Advertising, g.b's, poisons, black glass, Breweriana, Pharmacy, pipes, salt glaze.

**NEXT 4 full col'r cats (all Sun lots illus'd) just £20 UK Single £6 each**

**ENCORE HOTEL DEAL**

2 people 1 night £43.50, 2 nights  
£87, 3 nights £115. tel: 01226 729930.

Mention manageress Alison Hadaway.

Online: [www.encorebarnsley.co.uk](http://www.encorebarnsley.co.uk)

Tick Elsacar 1, 2, 3 for number of nights.

**SUPERB all you can eat buffet breakfast!**

**Tour de France July - BOOK EARLY**

BBR's 2015 Fairs/ Auctions: **Apr 25/26** • 25th UK SummerNational July 4/5  
& Oct 3/4 Planning ahead - 2016 SummerNational July 3 & 4

BBR, Elsacar Heritage Centre, Nr Barnsley, S. Yorks. S74 8HJ  
tel: 01226 745156 email: [sales@onlineebb.com](mailto:sales@onlineebb.com) [www.onlineebb.com](http://www.onlineebb.com)

